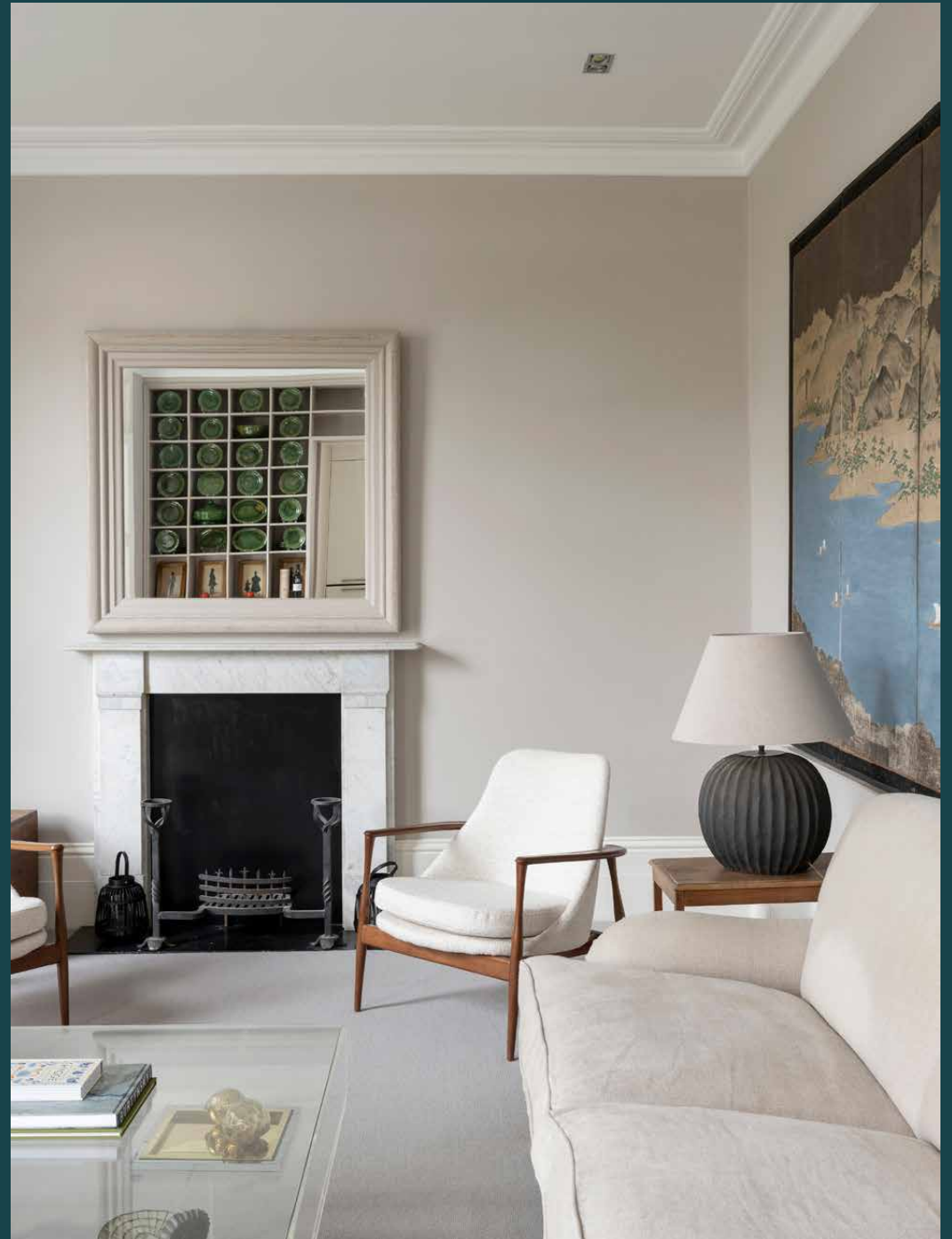

Pembridge Villas

Notting Hill W11

2 Bedrooms, 2 Bathrooms
For 4 guests





Spatial innovation meets poised interior design at this serene two-bedroom apartment in Notting Hill.

On a prestigious road, this first-floor apartment pairs classical styling with thoughtful interventions. Vast, full-height windows draw natural light into the open-plan reception and dining room.

Beyond, a small balcony provides a perspective on the leafy street below.

Sink into a sofa in the living area. This space is characterised by neutral tones and a period aesthetic. Against a dark, distinguished fireplace, a white marble surround provides contrast. Above, the high ceiling is framed by white cornicing.

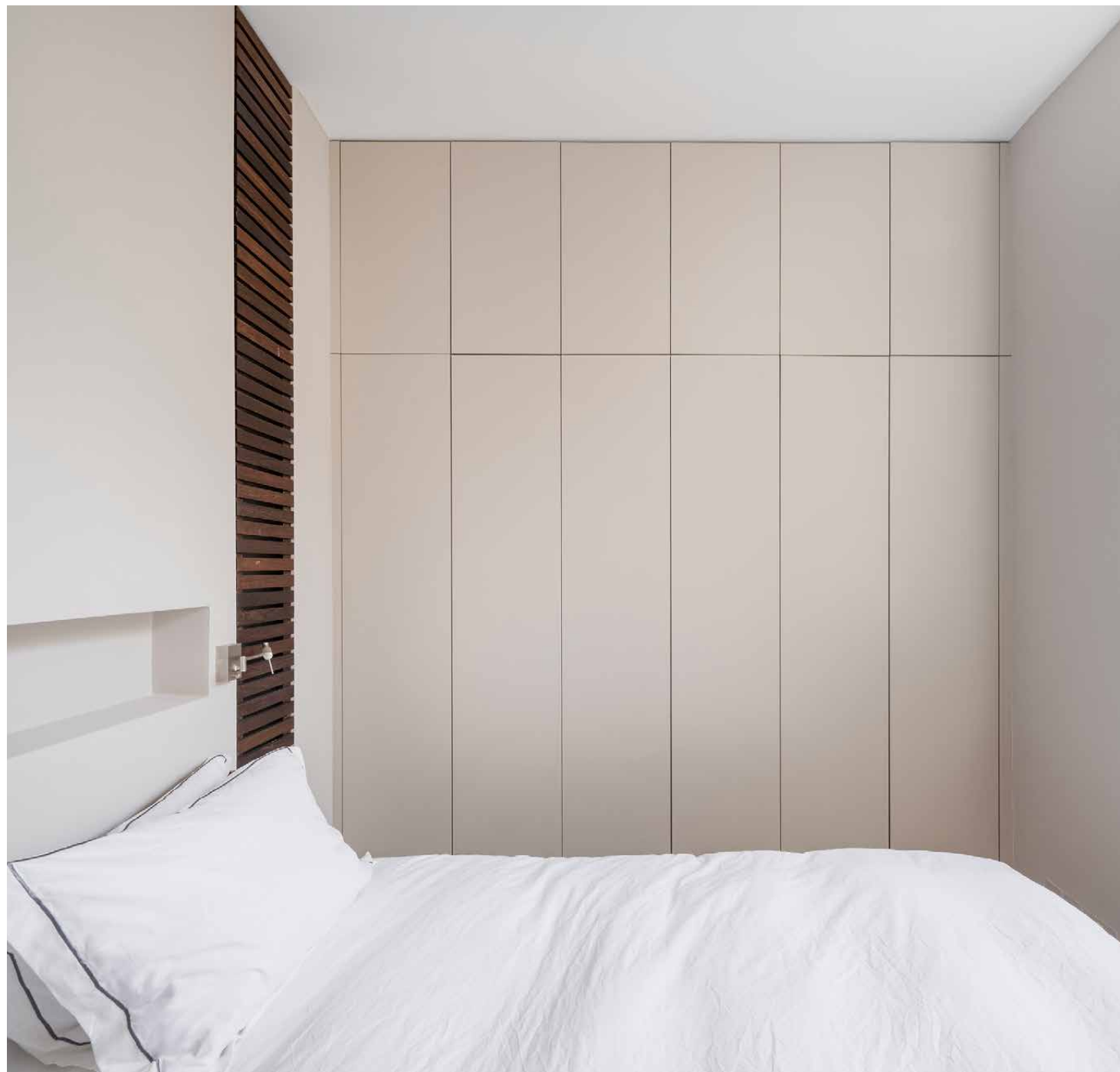
The dining area is backdropped by a wall of bespoke joinery, through which a doorway opens into the kitchen. This space is a contemporary affair with pared back-cabinetry, integrated appliances and a skylight illuminating the room.

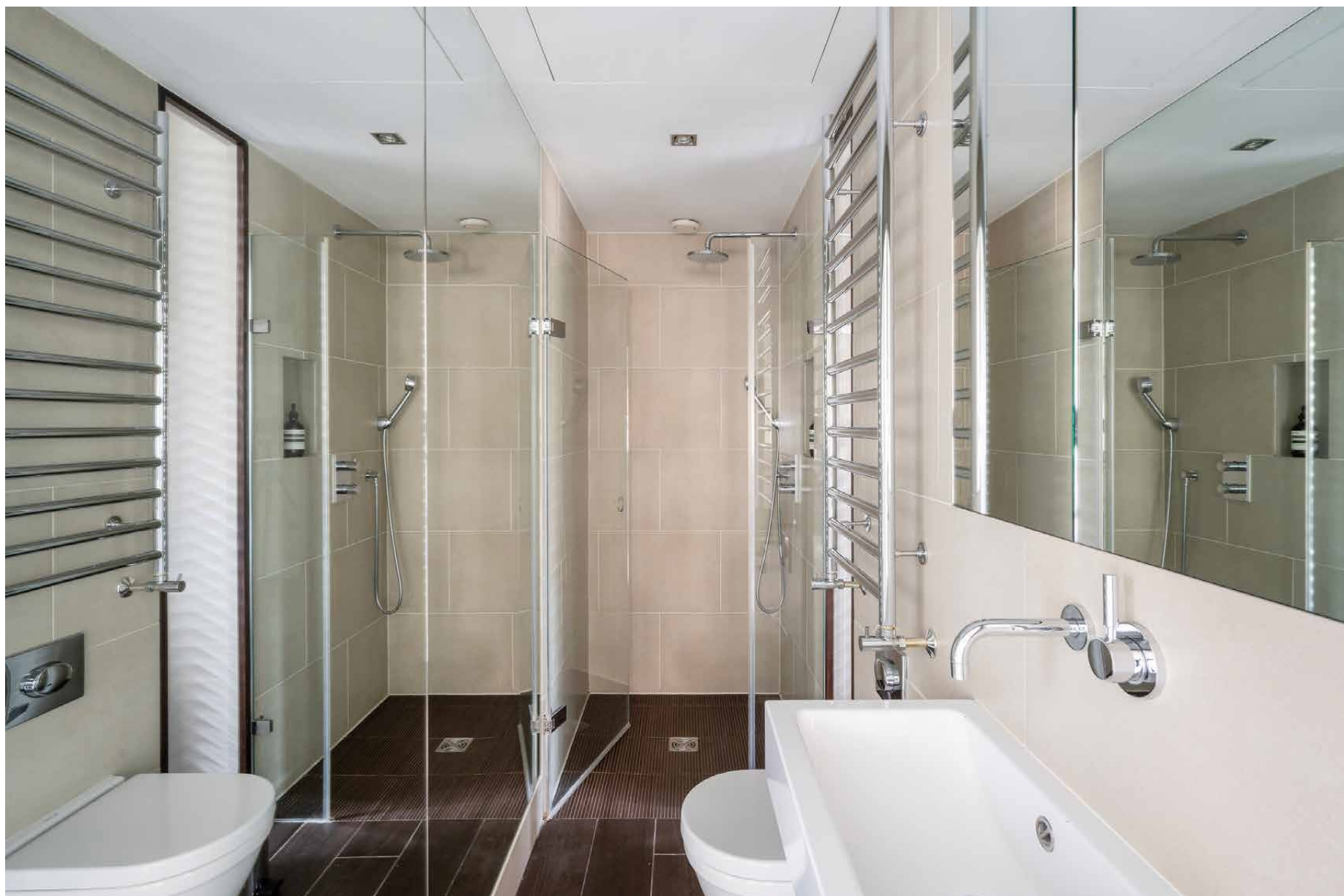




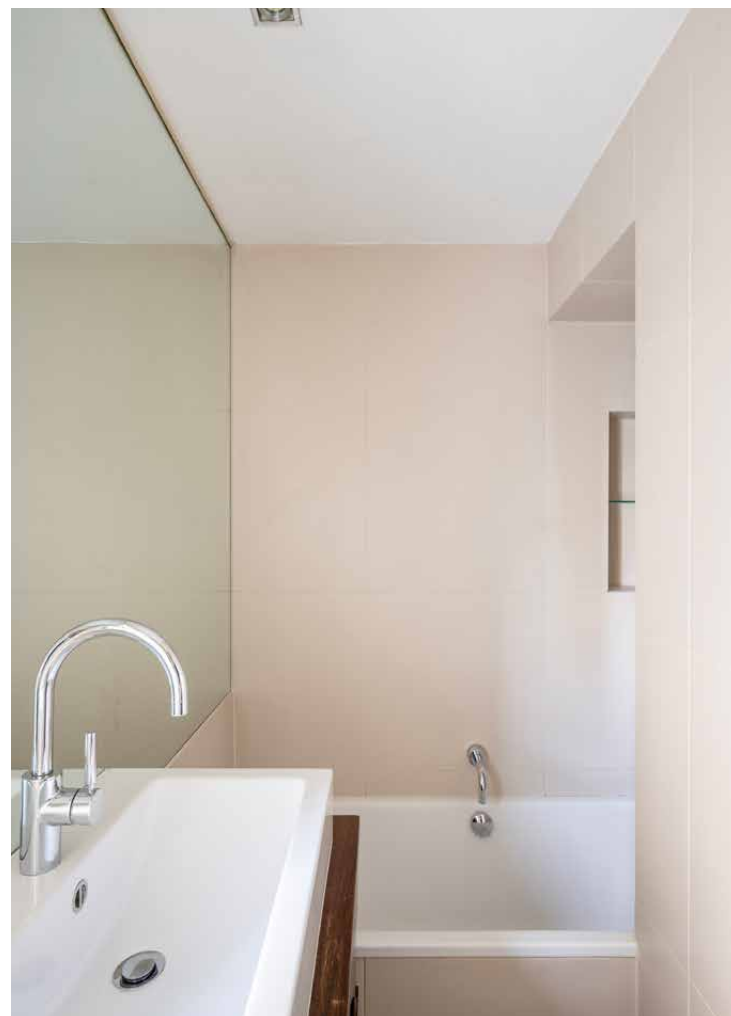
The calming principal bedroom pairs two walls of fitted wardrobes with a slatted wood accent feature, to provide an organic texture. Mornings are easy in the stylish shower room, which enjoys a mirrored wall, chrome fittings and a frameless rain-fall shower.

The guest bedroom benefits from an eye-catching feature wall and a generous sash window. This bedroom is served by a family bathroom, complete with a recessed bathtub.









LOCATION

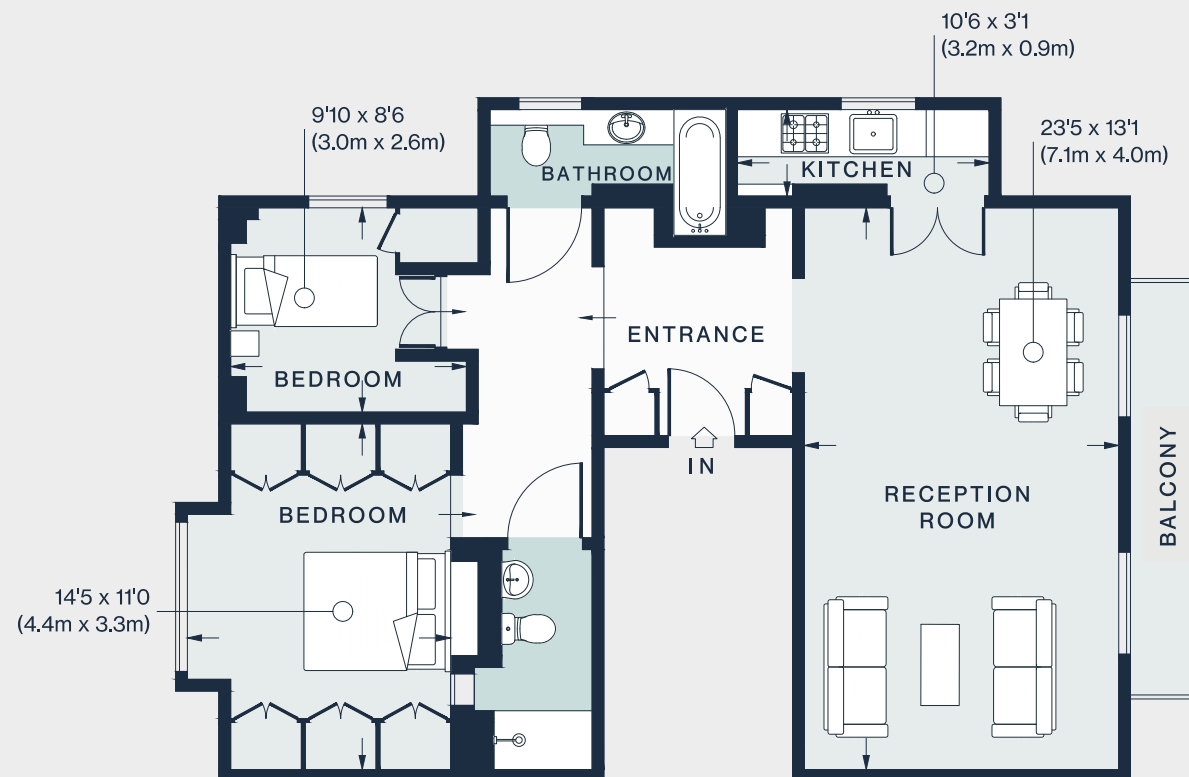
A regal road in Notting Hill, Pembridge Villas is one of the most sought-after streets in London.

Nearby Westbourne Grove combines an array of upscale boutiques, cafes and restaurants. Grab essentials from Daylesford Organic, brunch at Granger and Co. then browse the rails at Sezane or Reformation. For antiques and vintage fashion, wander to Portobello Road. For fine dining, choose between Michelin-starred restaurants Dorian, The Ledbury or Core by Clare Smyth. Alternatively, opt for sushi from Endo Kazutoshi's Sumi and amble home in two minutes.



PROPERTY HIGHLIGHTS

- Open-plan reception and dining room
- Separate kitchen
- Balcony
- Principal bedroom
- Guest bedroom
- Shower room
- Family bathroom
- Royal Borough of Kensington & Chelsea



FIRST FLOOR

Approx. Gross Internal Area = 845 sq ft / 78.5 sq m

Floor plans are for illustrative purposes only and not to scale. Compliant with RICS code of measuring practice.
Prepared for Domus Stay. Copyright © All Rights Reserved.



Please don't hesitate to get in touch if you have any questions or require any further information.

hello@domusstay.com

+44 (0)20 8168 8880

Domus Stay provides the perfect combination of property, place and personal service for the world's most remarkable people. If you have any questions, or if we can help in any way, please contact us on the above number. Be it about a property you have, a property you want, dates to check or any special requirements you may need, we'd love a chat.

