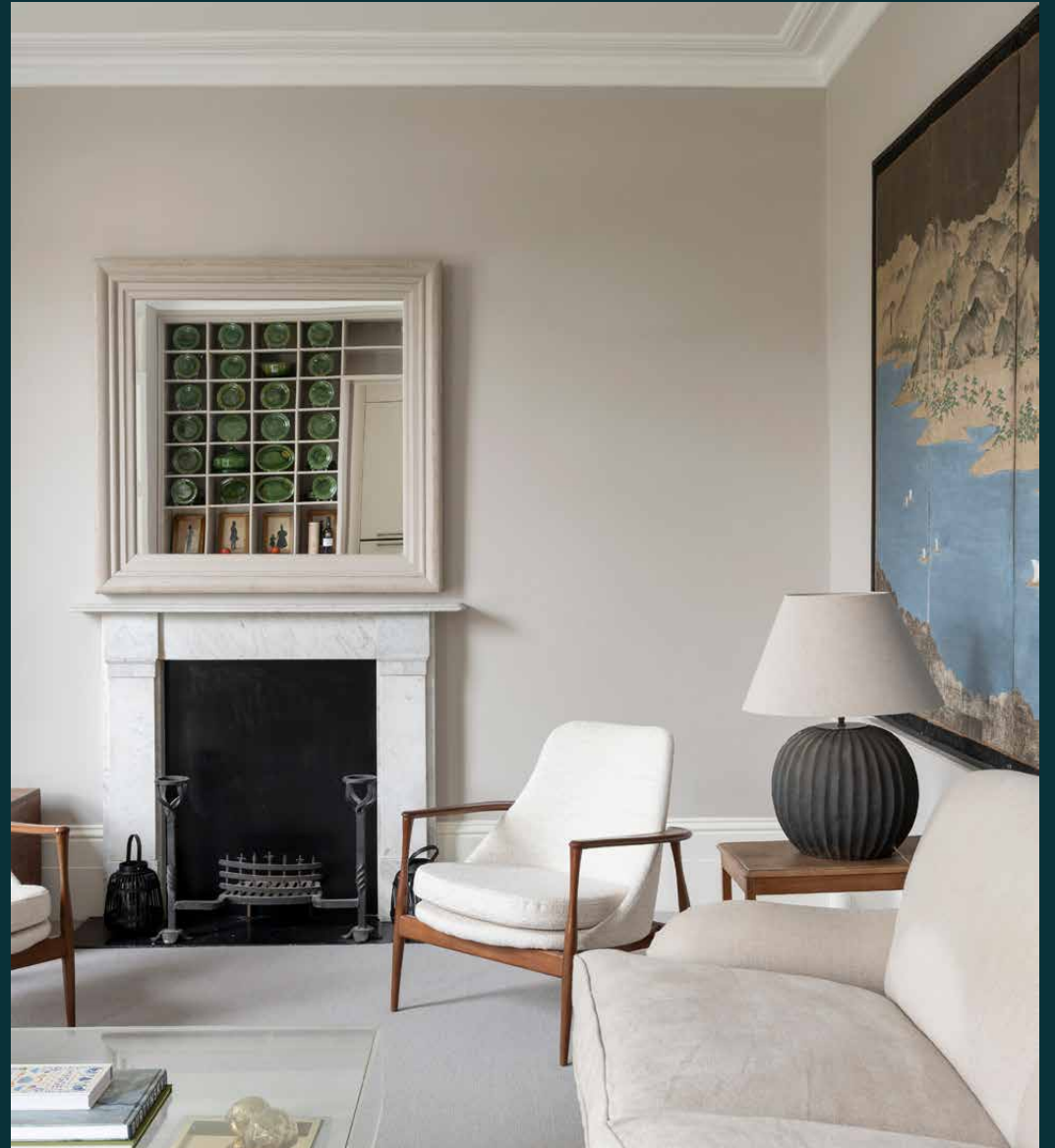


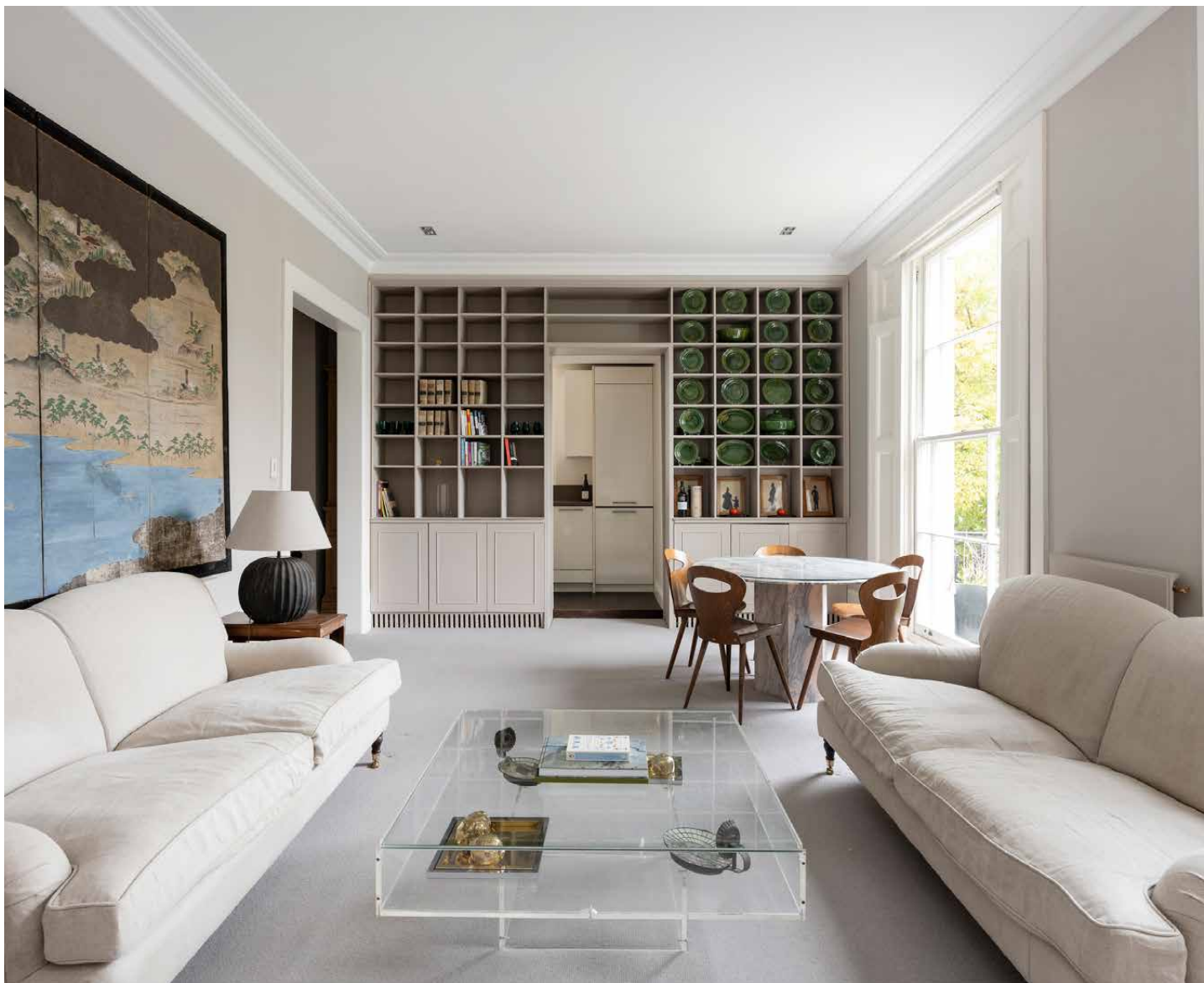
domus
stay.

Pembridge Villas II

NOTTING HILL

2 Bedrooms, 2 Bathrooms
For 4 guests





Spatial innovation meets poised interior design at this serene two-bedroom apartment in Notting Hill.

Refined stucco-fronted townhouses line this handsome street at the prestigious heart of Notting Hill, where this first-floor apartment pairs classical styling with thoughtful interventions. The home expertly balances heritage architecture with carefully considered contemporary interiors, while full-height windows draw natural light.



Living spaces

Relaxation reaches new heights in Pembridge Villas' social hub: a tranquil setting characterised by its soothing design and leafy outlook. Sink into a chair by the marble fireplace or settle in for the evening on the plush cream sofas. Flooding in natural light and a convivial feel, twin sash windows stretch from floor to ceiling and lead to an intimate balcony.

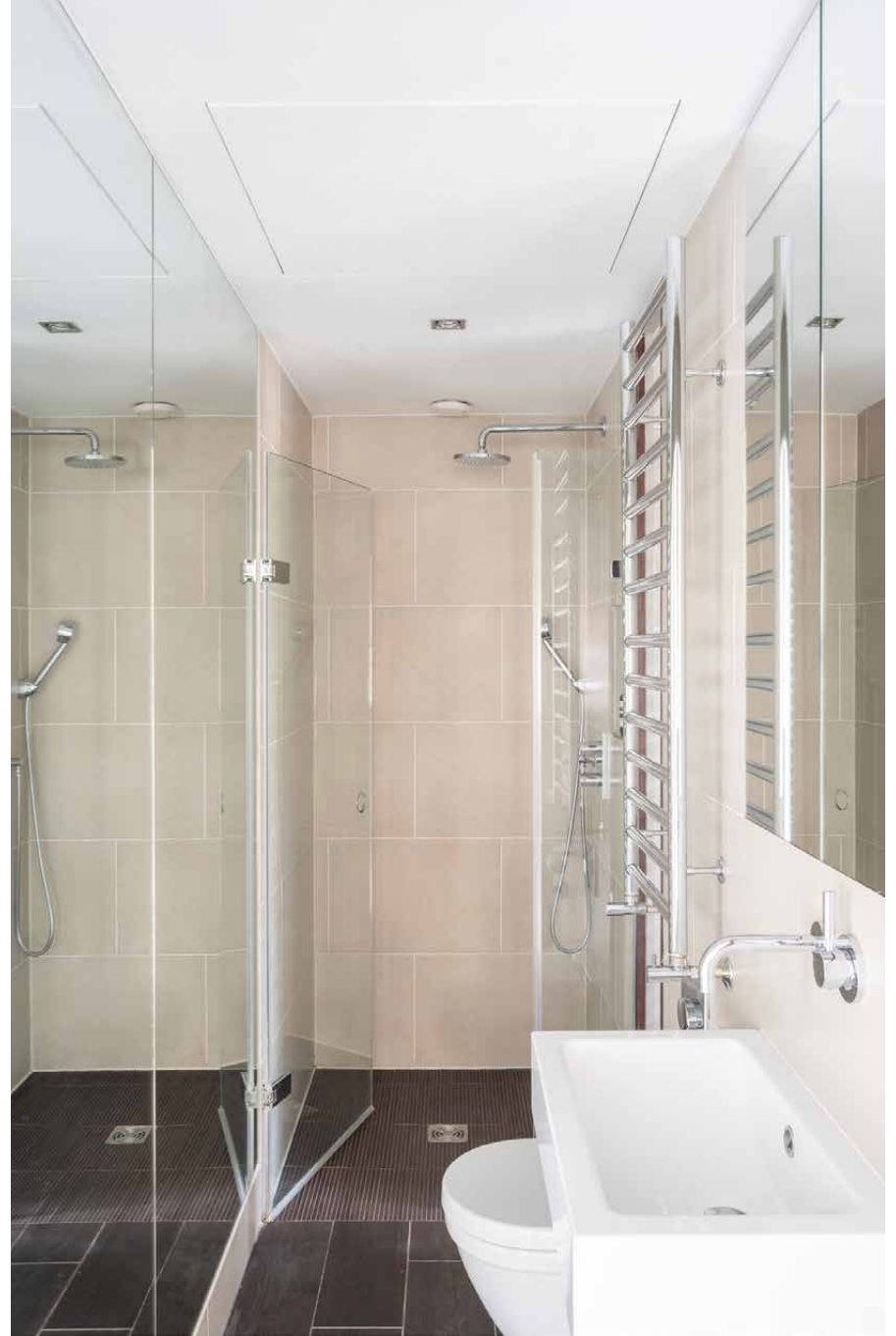
The dining area is backdropped by a wall of bespoke joinery – the framework for a doorway into the kitchen. A contemporary affair, appliances are tucked neatly into pared back-cabinetry, while a skylight overhead illuminates the room.





Bedrooms & Bathrooms

Channeling a restrained aesthetic, sleeping quarters here ensure restful nights. Mornings come easily in the calming principal bedroom, where two walls of fitted wardrobes offer ample storage and a stylish shower room features a rainfall shower. The guest bedroom benefits from an eye-catching feature wall, and is served by a family bathroom with a recessed bathtub.

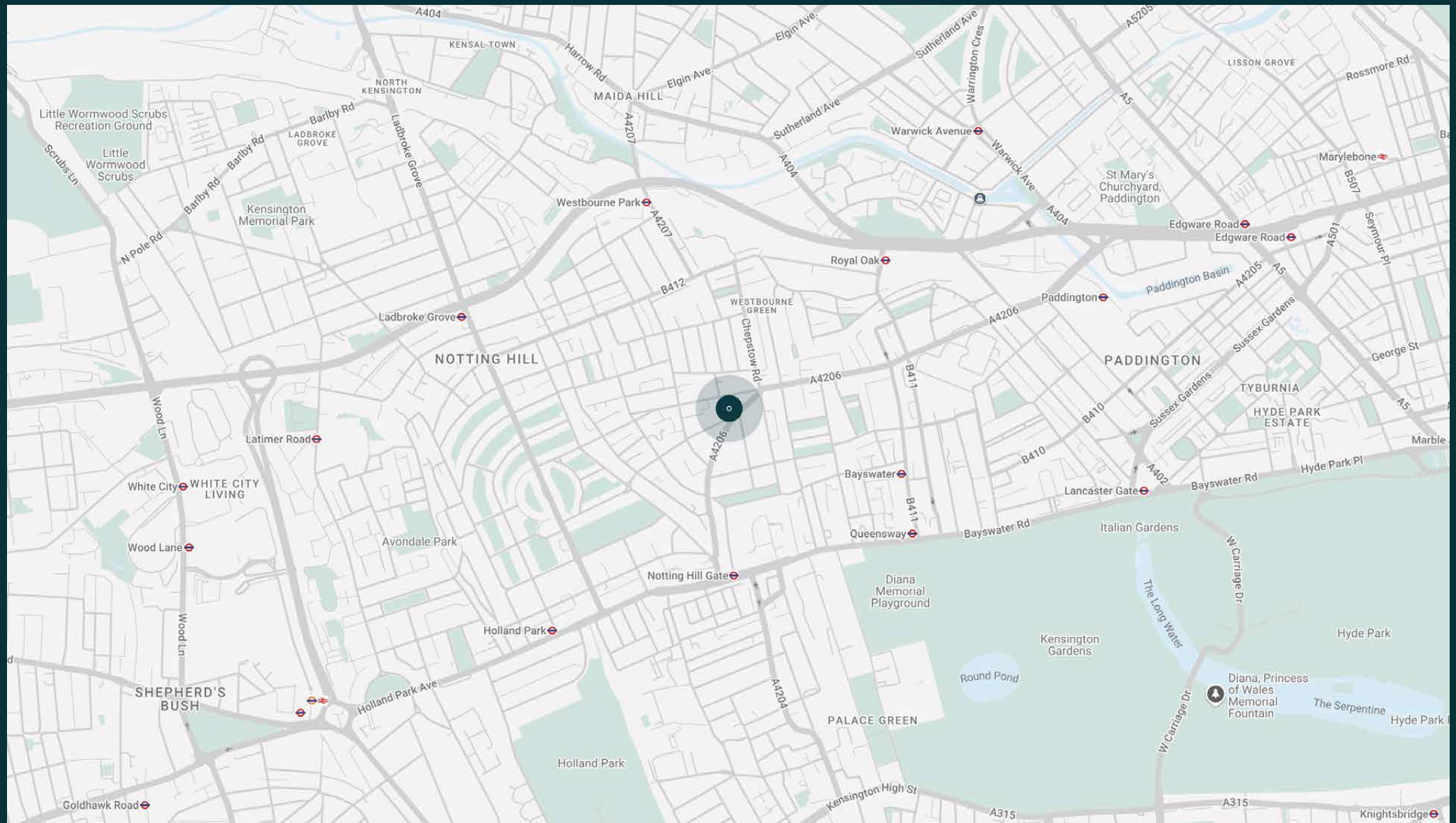


The neighbourhood

A regal road in Notting Hill, Pembridge Villas is one of the most sought-after streets in London.

Nearby Westbourne Grove combines an array of upscale boutiques, cafes and restaurants. Grab essentials from Daylesford Organic, brunch at Granger and Co. then browse the rails at Sezane or Reformation. For antiques and vintage fashion, wander to Portobello Road. For fine dining, choose between Michelin-starred restaurants Dorian, The Ledbury or Core by Clare Smyth. Alternatively, opt for sushi from Endo Kazutoshi's Sumi and amble home in two minutes.





Property features

- Open-plan dining and reception room
- Contemporary kitchen
- Principal bedroom
- Guest bedroom
- Family bathroom
- Shower room
- Royal Borough of Kensington & Chelsea

Approx. 845 sq ft / 78.5 sq m



Approx. Gross Internal Area = 845 sq ft / 78.5 sq m

Floor plans are for illustrative purposes only and not to scale. Compliant with RICS code of measuring practice.
Prepared for Domus Stay. Copyright © All Rights Reserved.

Guest & concierge services

Our concierge team are here to help guests settle in, seamlessly. Centre court tickets to Wimbledon, Premier League seats with the best views, Savile Row tailors on standby, or a private chef to cater to individual tastes – we aim to elevate every stay.

From the moment of booking with us, each guest has a single point of contact to finesse the details. Our statement spaces are just the starting point – to ensure everyone feels at home, our rates include:

-
- Weekly housekeeping
 - Flexible check-in/out
 - Luxury linens and Bamford toiletries
 - Legal compliance on all our homes
 - A personal welcome and arrival essentials
 - Unlimited access to guest services and tailored experiences
 - Professional inventory inspection before and after every stay
 - Access to a curated portfolio of sole agency properties





Please get in touch if you have any questions
or require any further information.

hello@domusstay.com

+44 (0)20 8168 8880

The property particulars are a guide not statements. Descriptions, photographs, and plans are for guidance only. The Property is offered "subject to contract and references". No warranties, representations, License or Tenancy is given by Domus Stay. Our full disclaimer together with trading names and our Privacy Policy is shown on our website

© Domus Stay 2025. All rights reserved.

