

domus  
stay.

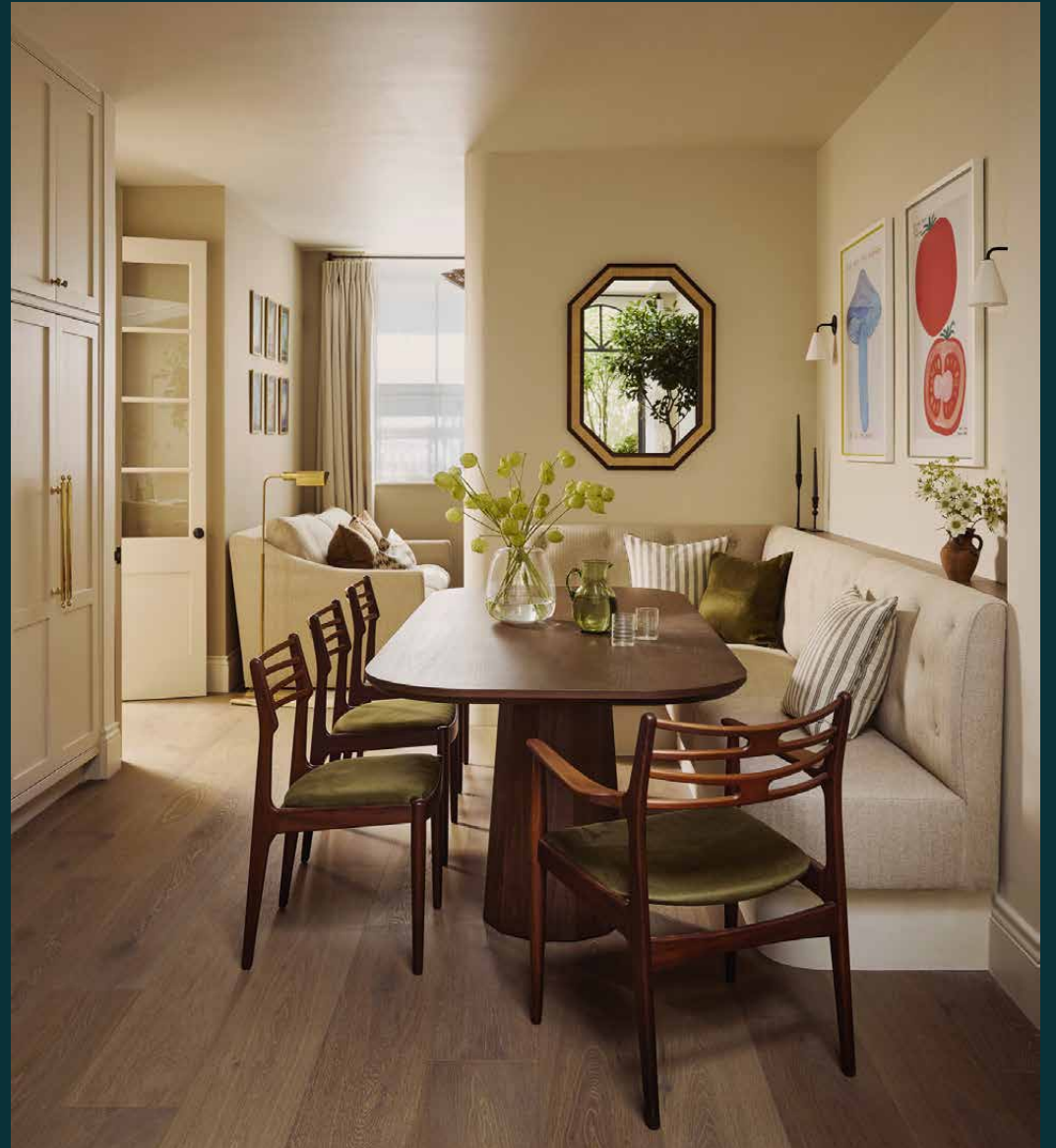
---

## Oakley Gardens

CHELSEA

2 Bedrooms, 2 Bathrooms  
For 4 guests

---





A landmark building transformed; this cleverly designed home to rent takes city living to another level.

A stone-tiled hallway introduces the home with understated elegance. To one side, a generous double reception runs the full depth of the house. Period details shine here: ornate cornicing skims high ceilings, a carved stone fireplace forms a striking focal point and full-height sash windows draw in abundant natural light. One end is arranged for relaxed seating, the other designed for hosting with a marble table and pouffe chairs. At the end of the hall, a private study enjoys courtyard garden views framed by a Crittall-style door.









# Living spaces

A stone-tiled hallway introduces the home with understated elegance. To one side, a generous double reception runs the full depth of the house. Period details shine here: ornate cornicing skims high ceilings, a carved stone fireplace forms a striking focal point and full-height sash windows draw in abundant natural light. One end is arranged for relaxed seating, the other designed for hosting with a marble table and pouffe chairs. At the end of the hall, a private study enjoys courtyard garden views framed by a Crittall-style door.











The garden level centres around a welcoming open-plan kitchen and dining room, brightly illuminated by a skylight and large rear windows. A marble-topped wooden island anchors the space, complemented by shaker cabinetry, a Lacanche range cooker and an Officine Gullo sink – perfect for culinary enthusiasts. Beyond, an archway clad in dusky-pink tiles reveals a walk-in pantry. To the front, a cosy family room sets the scene for informal evenings, while a boot room with direct garden access brings everyday practicality.









“One end is arranged for relaxed seating, the other designed for hosting with a marble table and pouffe chairs.”





## Bedrooms & Bathrooms

Upstairs, a refined palette and period detailing create a sense of calm across the sleeping quarters. The principal suite spans the first floor, complete with bespoke joinery, a velvet headboard and a marble-clad en suite. Here, dual vanities and twin rainfall showers add a touch of luxury. A pink-toned dressing room with a statement ceiling offers a stylish storage solution.

The top floor is arranged as a Serene guest retreat. An upholstered bed sits against olive-toned walls, opening onto a private roof terrace. A family bathroom serves this floor, where rustic red panelling, checkerboard tiling and an arched alcove bath combine style with practicality.



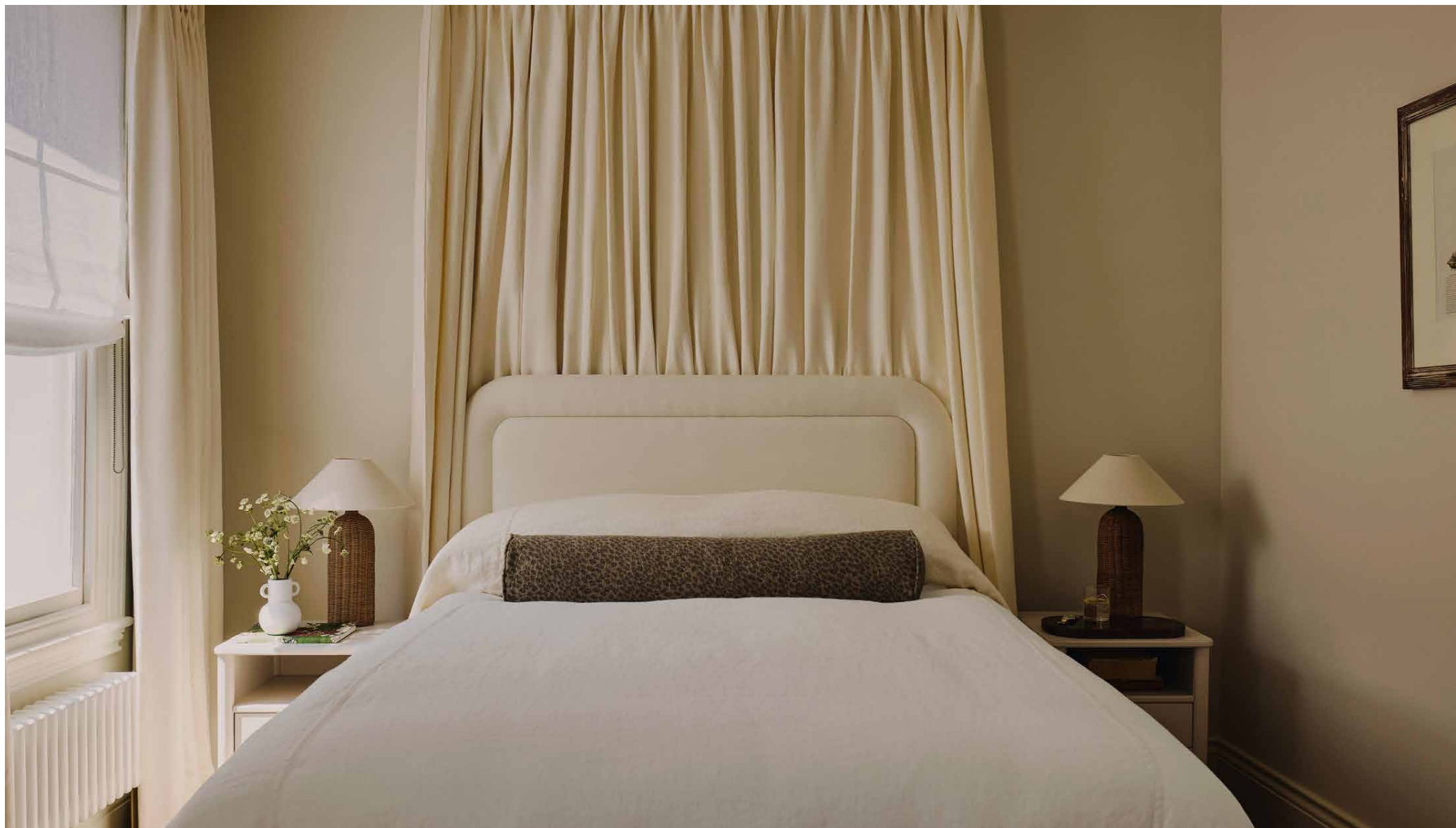
















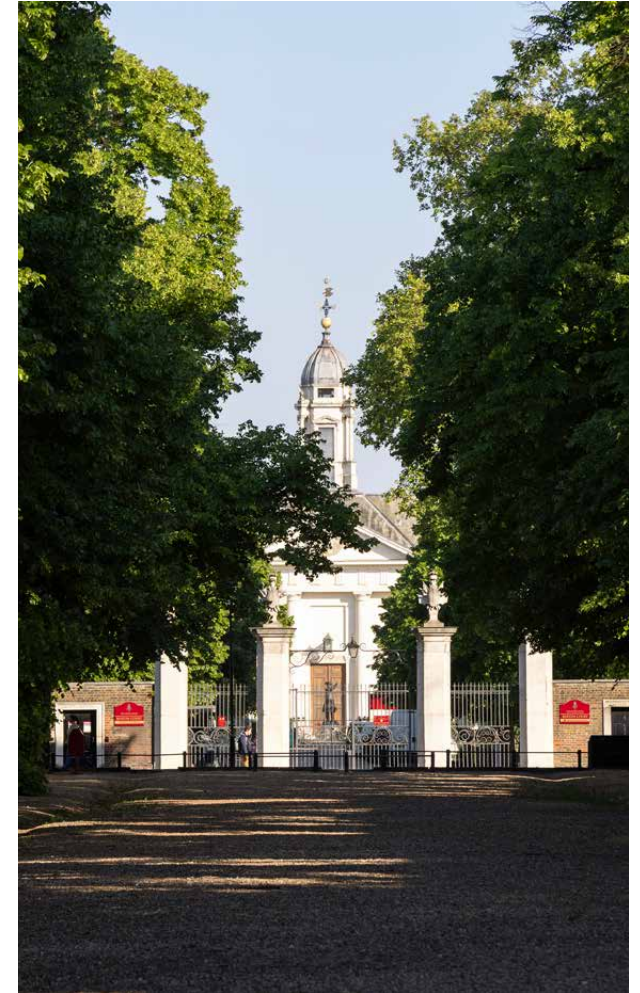


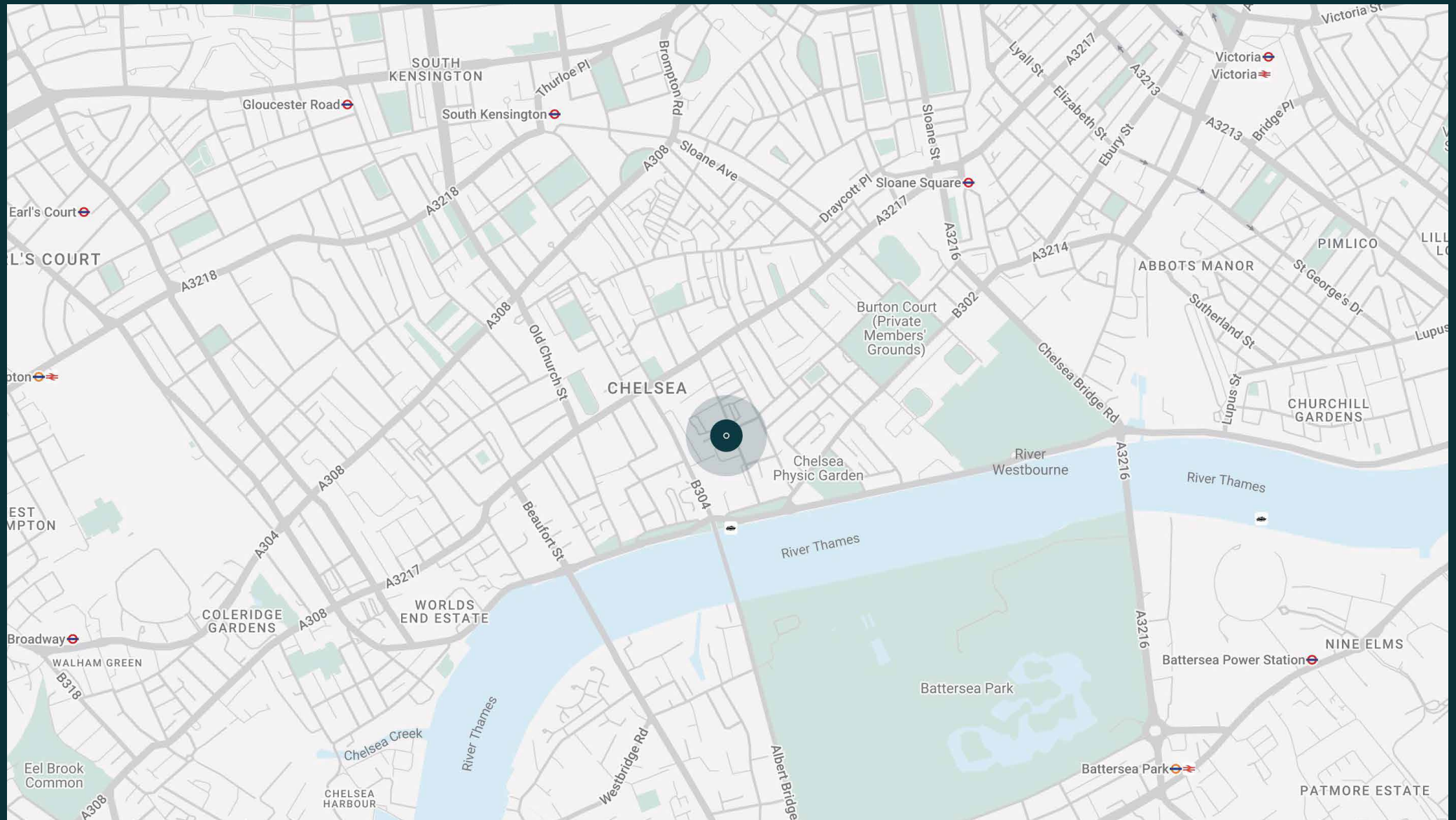


# The neighbourhood

The best of Chelsea is at your doorstep. Start your mornings with a vinyasa flow session at Triyoga followed by easy-going brunch at Bluebird.

Head to the boutiques that line The King's Road then stop at the Saatchi Gallery for contemporary art. Stroll upwards to the world-class museums of South Kensington, or down for long walks along the Embankment. Fine dining comes naturally to this neighbourhood: Italian restaurant Ziani was co-founded by a direct descendant of the Venetian Doge, or Michelin-starred The Five Fields or Claude Bosi at Bibendum are close by for special occasions.





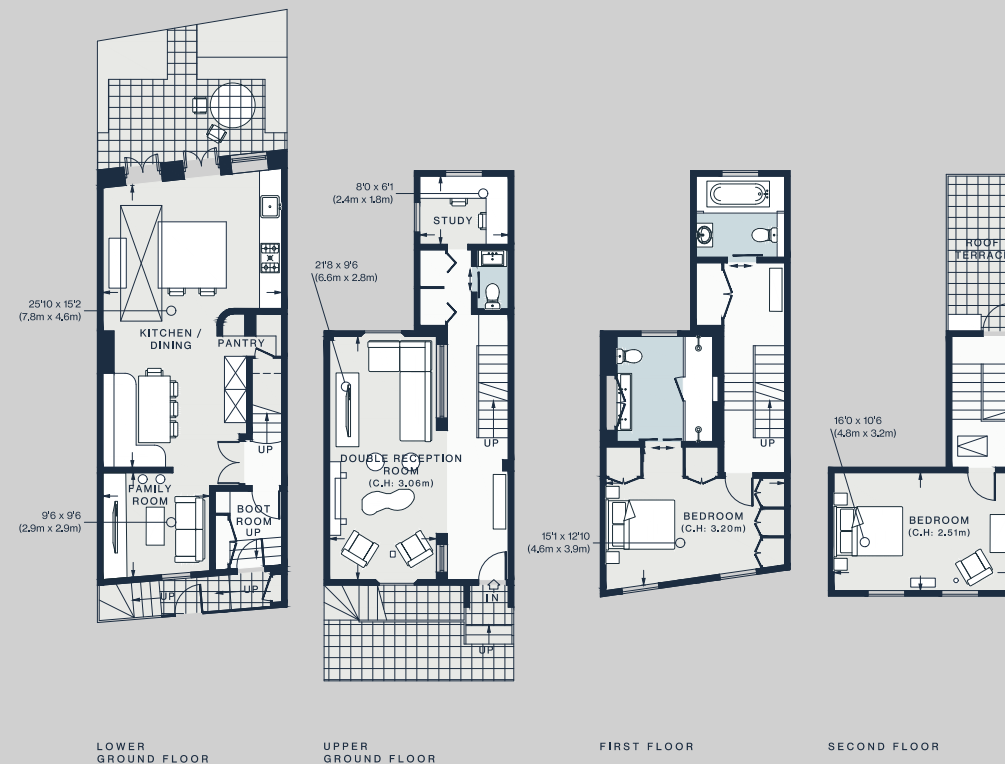




# Property features

- Open-plan kitchen and dining room
- Double reception room
- Principal bedroom suite with dressing room
- Guest bedroom
- Family bathroom
- Pantry
- Study
- Cloakroom
- Boot room
- Courtyard garden
- Roof terrace
- Royal Borough of Kensington & Chelsea

Approx. 1,709 sq ft / 158.8 sq m



Approx. Gross Internal Area = 1709 sq ft / 158.8 sq m

# Guest & concierge services

Our concierge team are here to help guests settle in, seamlessly. Centre court tickets to Wimbledon, Premier League seats with the best views, Savile Row tailors on standby, or a private chef to cater to individual tastes – we aim to elevate every stay.

From the moment of booking with us, each guest has a single point of contact to finesse the details. Our statement spaces are just the starting point – to ensure everyone feels at home, our rates include:

- 
- Weekly housekeeping
  - Flexible check-in/out
  - Luxury linens and Bamford toiletries
  - Legal compliance on all our homes
  - A personal welcome and arrival essentials
  - Unlimited access to guest services and tailored experiences
  - Professional inventory inspection before and after every stay
  - Access to a curated portfolio of sole agency properties





# domus stay.

Please get in touch if you have any questions  
or require any further information.

[hello@domusstay.com](mailto:hello@domusstay.com)

+44 (0)20 8168 8880

The property particulars are a guide not statements. Descriptions, photographs, and plans are for guidance only. The Property is offered "subject to contract and references". No warranties, representations, License or Tenancy is given by Domus Stay. Our full disclaimer together with trading names and our Privacy Policy is shown on our website

© Domus Stay 2025. All rights reserved.

