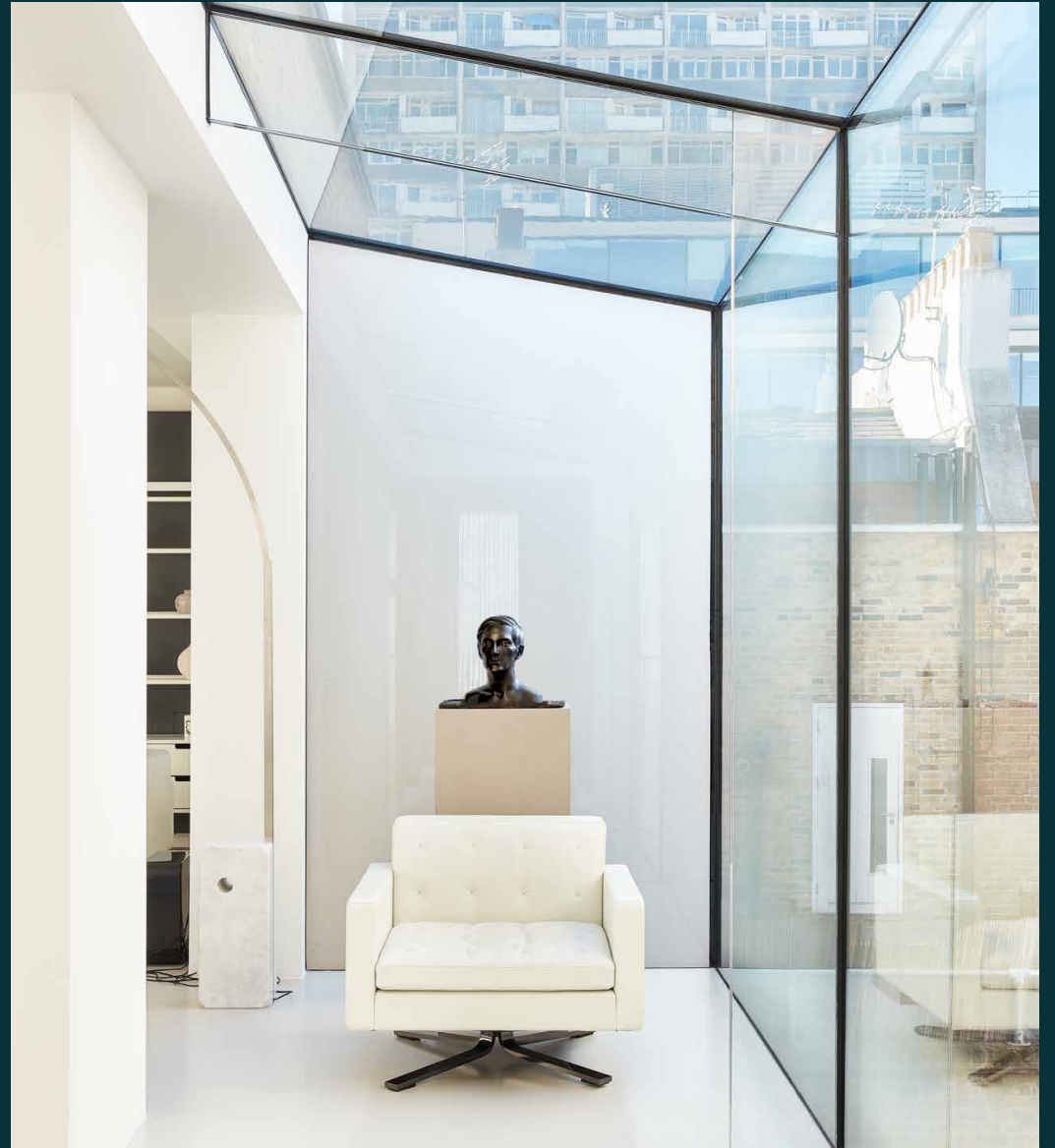


domus
stay.

Notting Hill Gate

NOTTING HILL

4 Bedrooms, 4 Bathrooms
For 6 guests





Gallery-like proportions and a roof terrace. This four-bedroom triplex apartment to rent raises the bar with every storey.

Feel the energetic bustle of one of West London's main thoroughfares fade away as you shut the front door here. In place of the electric activity of Notting Hill Gate, cubist design by ng architecture toes the line between calming and captivating. Minimalist interiors lend attention to modern details, and a rooftop terrace offers sweeping city views.





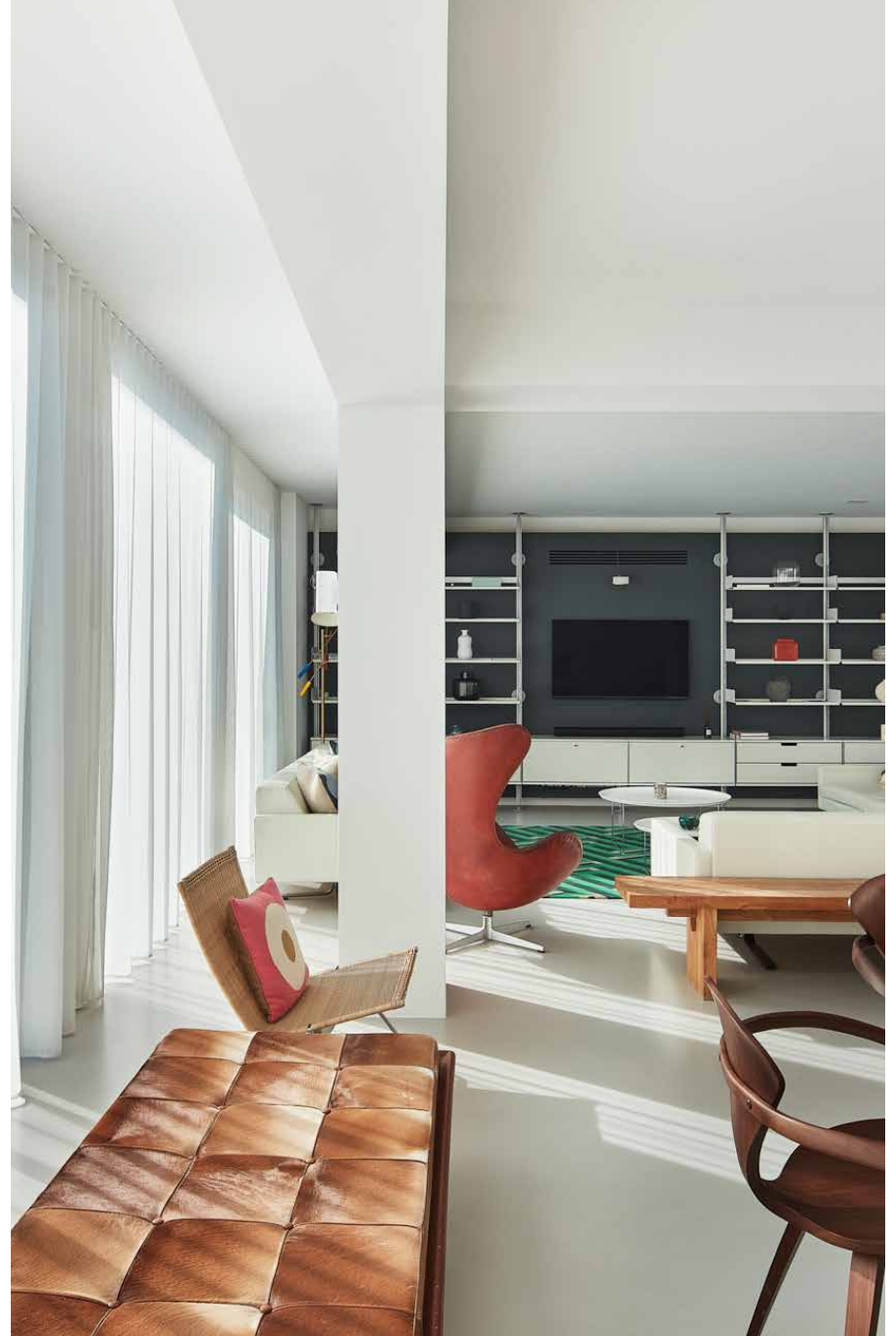
The living spaces

Reaping the benefits of its third-floor positioning, the open-plan kitchen and reception room is a vast and light-filled space. There's gallery-like precision to the clean-line columns, swathes of floor-to-ceiling glazing and considered zoning. At one end, the chequered wooden island brings warmth to the whitewashed room, offering an expansive surface for devoted culinary practice. At the other, an ode to the mid-century is realised with white tuxedo sofas, arranged with conversation in mind. Entertaining is streamlined here, with a dining table set at the heart of the space. For peace-and-quiet working, there's a study nestled on this floor.

As you ascend to the fourth floor, note the urban flair afforded through concrete stairs and stainless-steel balustrades – a precursor to the rooftop views. A sunlit games and television room leads out to the terrace, boasting commanding views across the city skyline, and easily transformed into another bedroom.





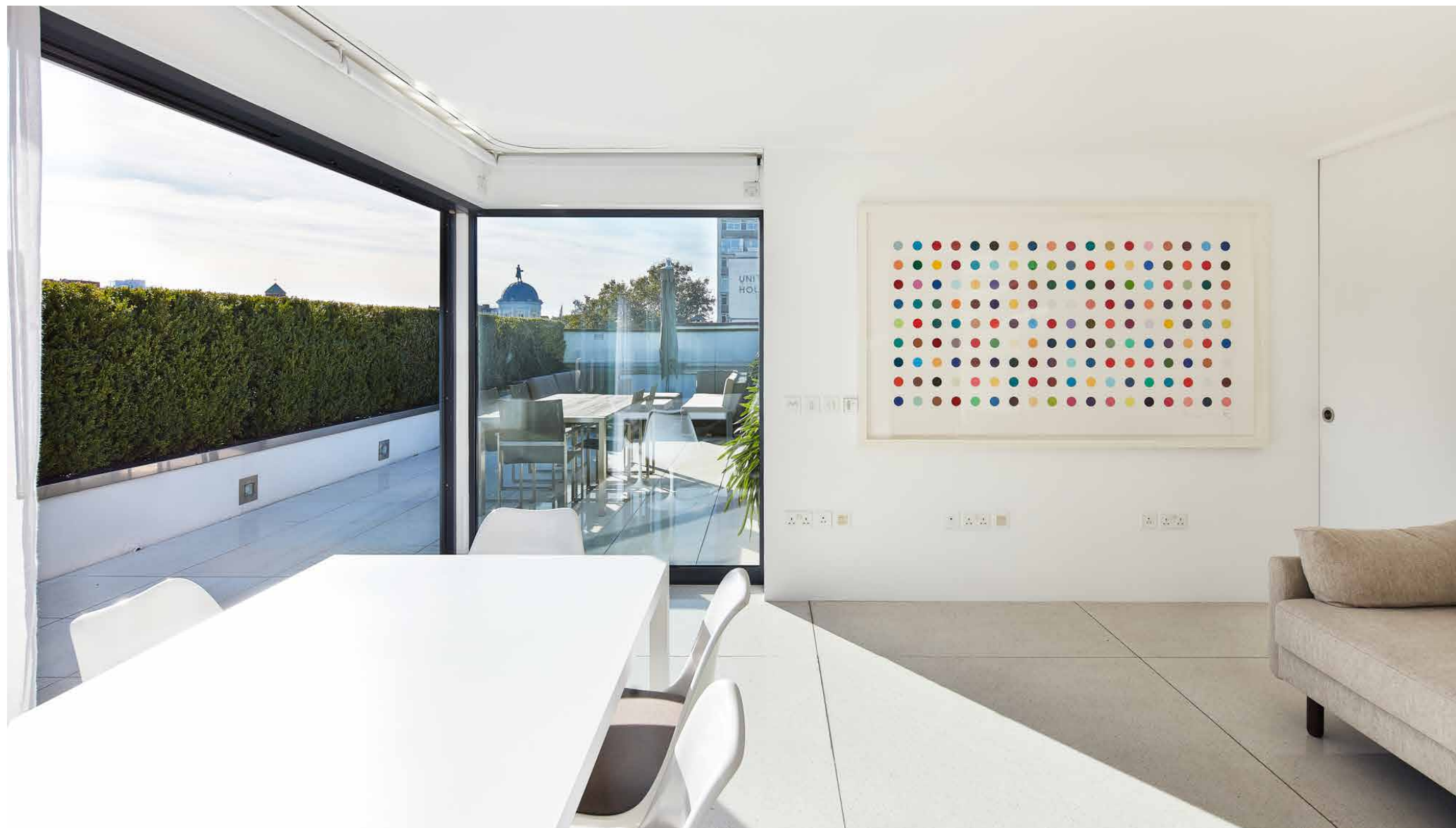




“There’s gallery-like precision to the clean-line columns, swathes of floor-to-ceiling glazing and considered zoning.









Bedrooms & bathrooms

Three further bedrooms epitomise beauty in simplicity. Set on the second floor, the master suite uplifts and it soothes. Next door, there's spa-like serenity to the free-standing tub in its ensuite bathroom. Serving the two additional bedrooms, a family bathroom is finished in striking greyscale marble. Notting Hill Gate offers sanctitude in the city.













Outdoor space

The home's minimalist interior palette is effortlessly translated outside, with pale marble tiles and contemporary seating. After a day along Portobello Road, invite friends and family over for evening drinks and a barbecue. Manicured greenery creates a backdrop of verdant privacy.



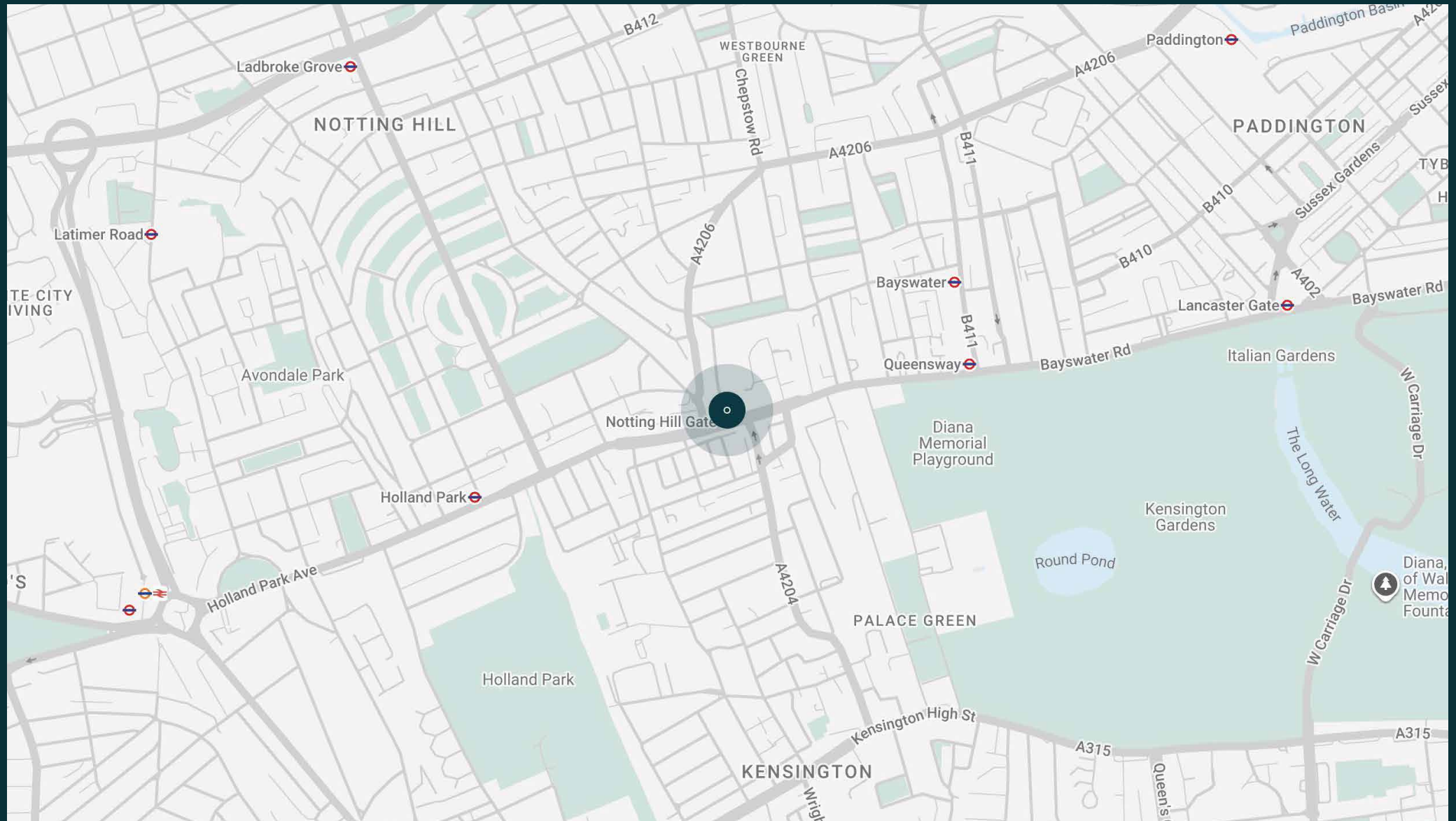


The neighbourhood

Notting Hill Gate is the nucleus that connects the vibrant locales of Holland Park, Kensington and Notting Hill together.

Stroll along Holland Park Avenue to pick up a new page-turner from Daunt Books, followed by a pastry at Buns From Home. Or head to the tranquil lawns of Hyde Park; grab your swimming costume for a dip in the Serpentine Lido. Notorious for its vintage boutiques and global eateries, get lost amongst Portobello Road eclectic thoroughfares. Get your cultural fix at the Design Museum and Royal Albert Hall. An evening at Gold or Core by Clare Smyth – be home in just a few minutes.



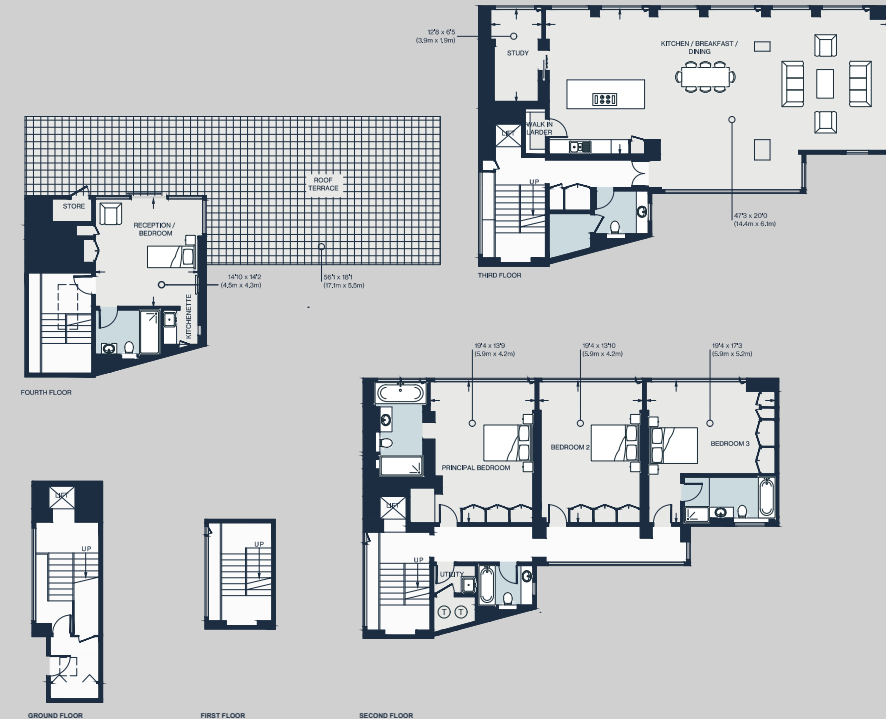




Property features

- Design by ng architecture
- Open-plan kitchen and reception room
- One further reception room
- Master bedroom suite
- Two further ensuite bedrooms
- Occasional bedroom / games room
- Family bathroom
- Roof terrace
- Study
- Private entrance and lift
- Royal Borough of Kensington & Chelsea

Approx. 3,824 sq ft / 355 sq m



Approx. Gross Internal Area = 3824 sq ft / 355 sq m

Floor plans are for illustrative purposes only and not to scale. Compliant with RICS code of measuring practice.

Guest & concierge services

Our concierge team are here to help guests settle in, seamlessly. Centre court tickets to Wimbledon, Premier League seats with the best views, Savile Row tailors on standby, or a private chef to cater to individual tastes – we aim to elevate every stay.

From the moment of booking with us, each guest has a single point of contact to finesse the details. Our statement spaces are just the starting point – to ensure everyone feels at home, our rates include:

-
- Weekly housekeeping
 - Flexible check-in/out
 - Luxury linens and Bamford toiletries
 - Legal compliance on all our homes
 - A personal welcome and arrival essentials
 - Unlimited access to guest services and tailored experiences
 - Professional inventory inspection before and after every stay
 - Access to a curated portfolio of sole agency properties





Please get in touch if you have any questions
or require any further information.

hello@domusstay.com

+44 (0)20 8168 8880

The property particulars are a guide not statements. Descriptions, photographs, and plans are for guidance only. The Property is offered "subject to contract and references". No warranties, representations, License or Tenancy is given by Domus Stay. Our full disclaimer together with trading names and our Privacy Policy is shown on our website

© Domus Stay 2025. All rights reserved.

