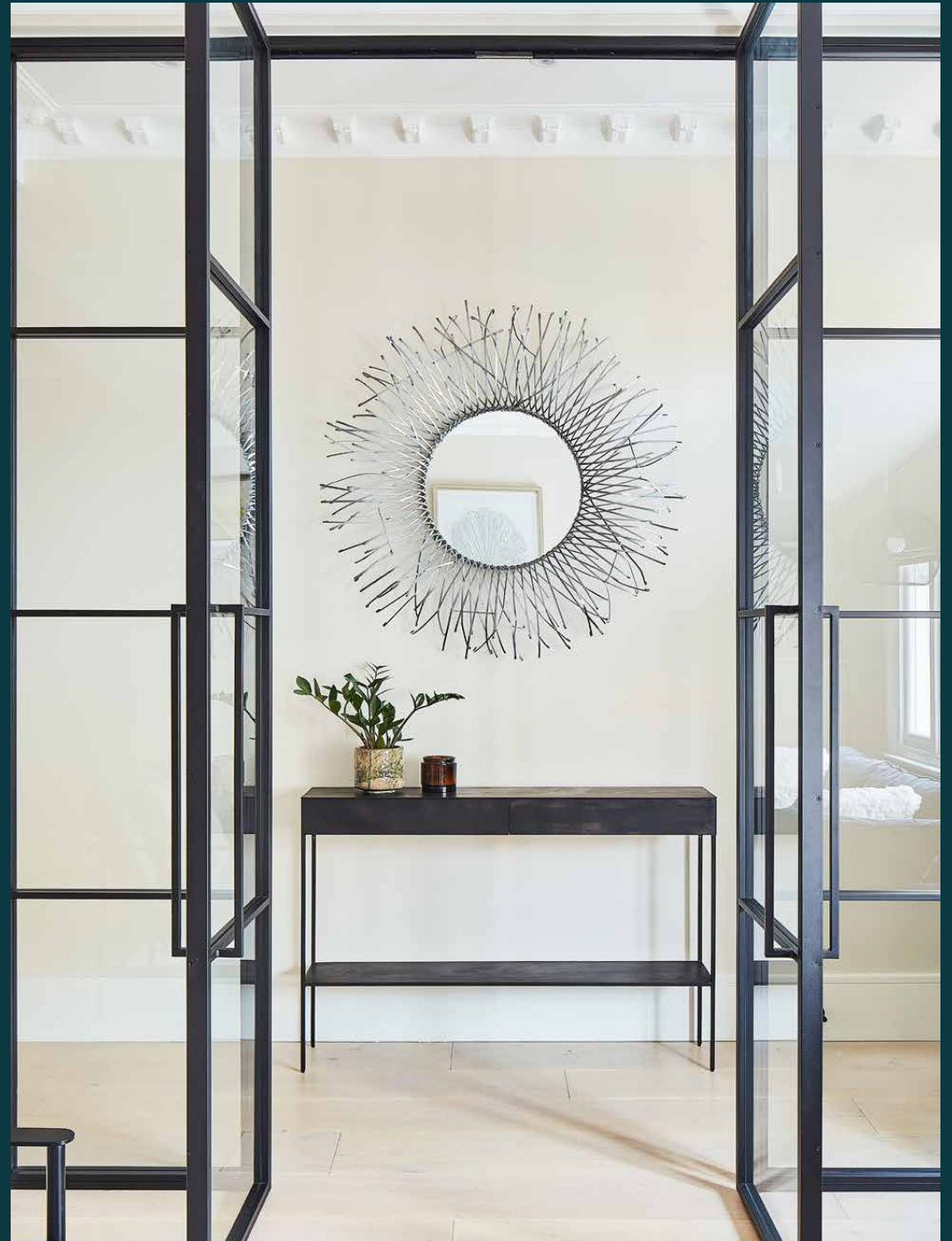




Moore Park Road

Fulham SW6

4 Bedrooms, 4 Bathrooms
For 8 guests





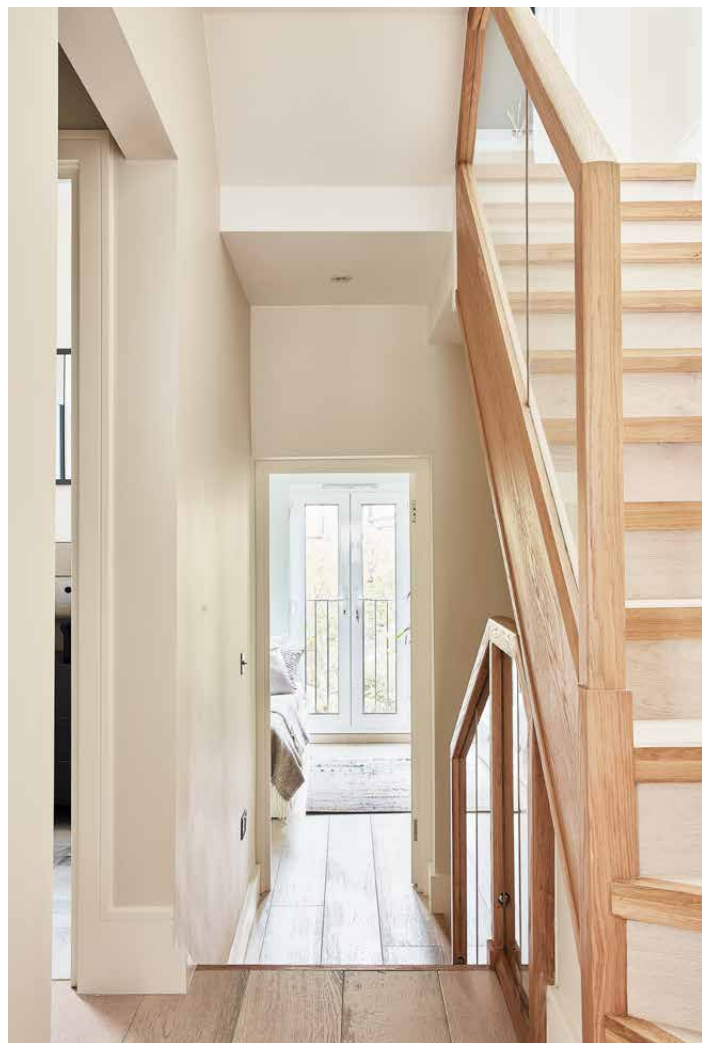
Stylish, soothing and serene. A city sanctum meticulously finished for the demands of family life.

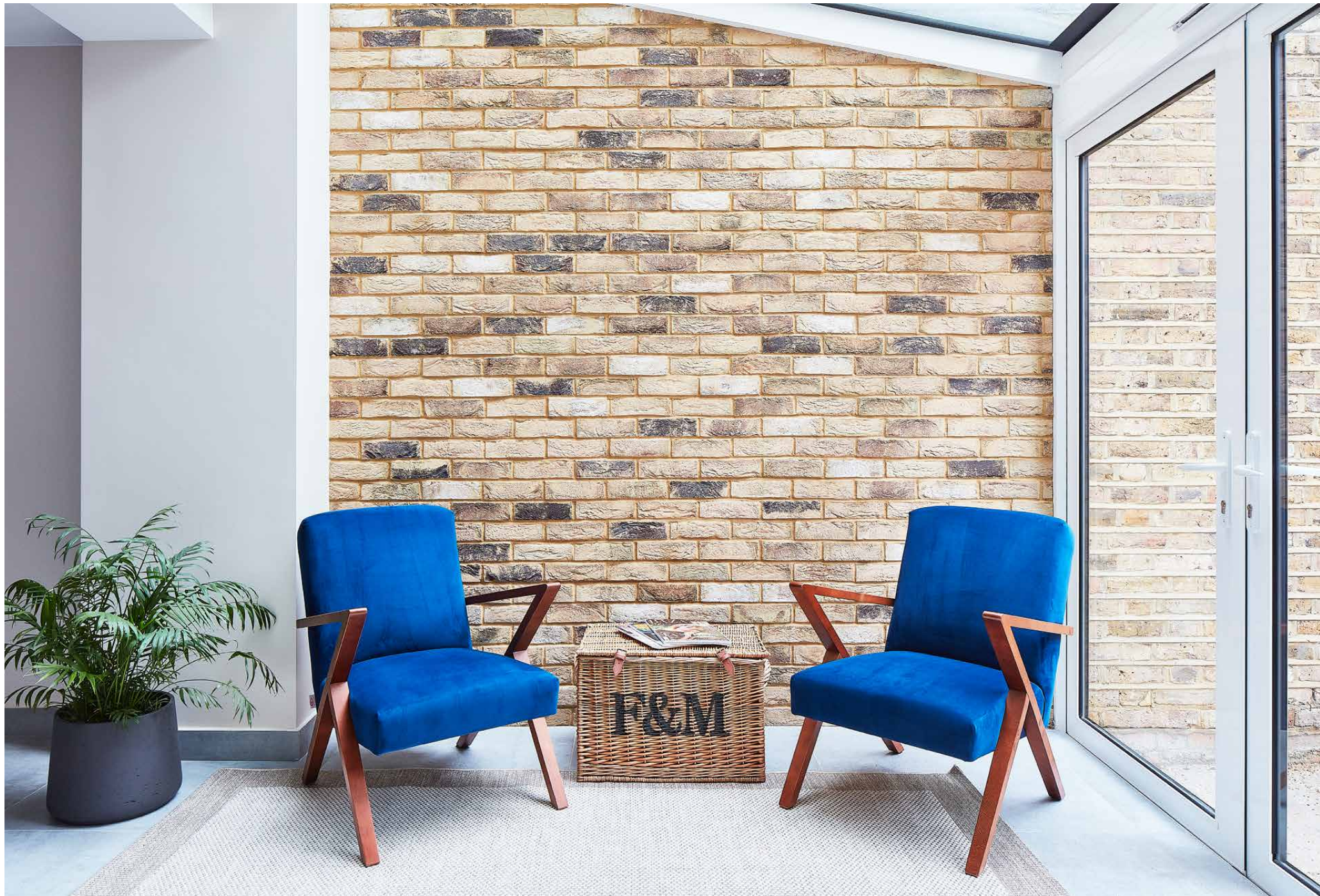
There's sophisticated poise to this four-bedroom terraced house, which enjoys excellent proximity to the sleek streets of Fulham and Chelsea. Exceptional attention to detail spanning four floors; tranquil homeliness and elevated design in equal measure.

Tucked away in a peaceful road, the muted grey façade with immaculate cast-iron railings is a precursor to the home's sleek interior palette. The sweeping hallway showcases period cornicing – an ode to the property's heritage – which has been updated with a New York-inspired industrialism.

Head downstairs to the open-plan kitchen and dining room – a conversation in colour and materiality: a custom-made brass extractor hood converses with steel-blue cabinets. Clusters of Edison-style lights illuminate the island. Read the morning papers beneath the glass roof, and in warmer climes, open the doors to the south-facing garden. A dining table invites long summer lunches, with a hammock for those mid-afternoon snoozes.







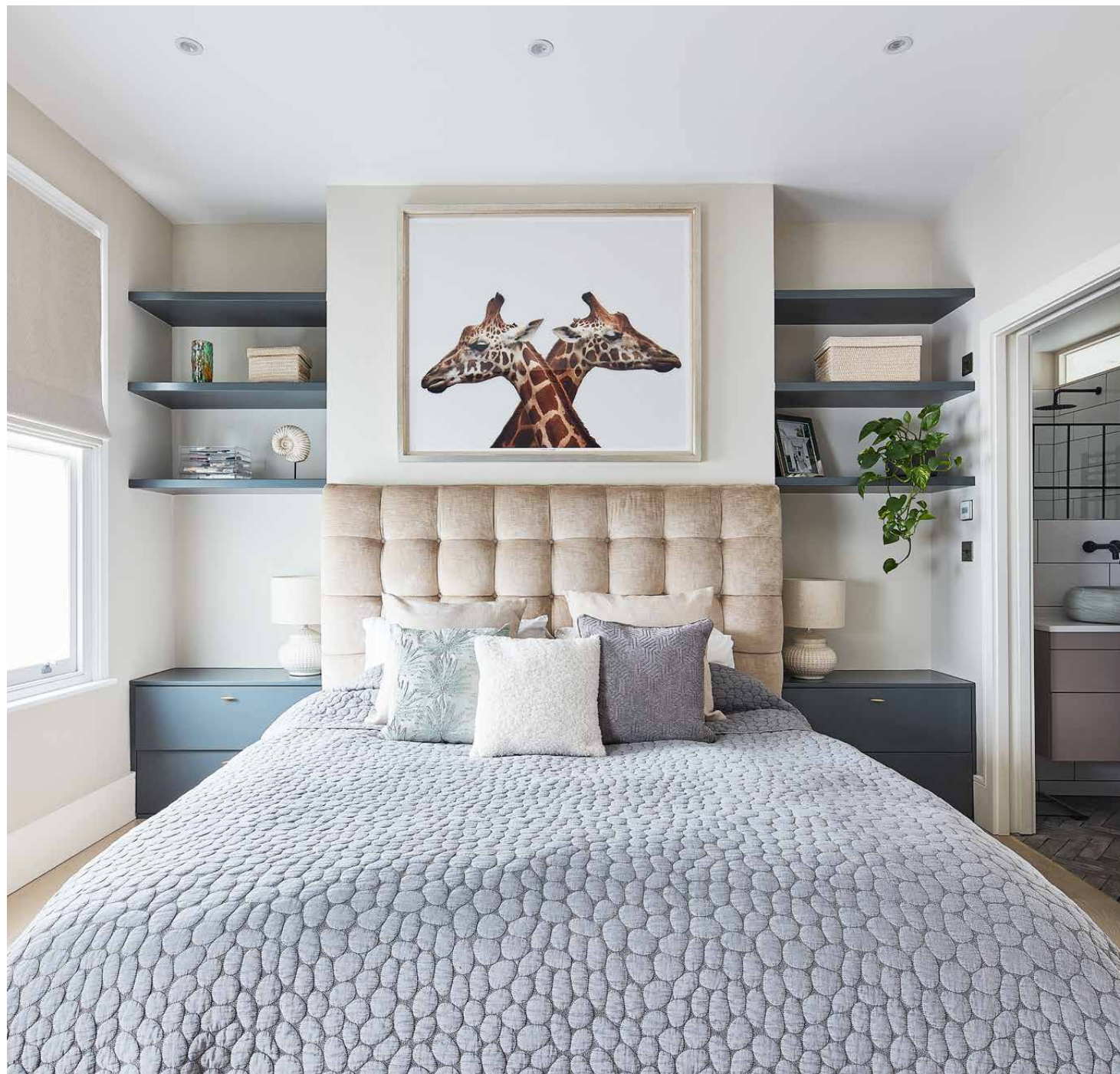
“

Fully integrated appliances, sweeping surfaces and an engaging palette of materials. A Quooker tap provides boiling water on demand. Perfect for the keenest of cooks.



Back up to the ground floor, a light-flooded living space purposed for entertaining and relaxing.

The sleeping quarters are at once laid-back and polished. The master suite is a pared-back haven, with soaring wardrobes for to store treat-yourself retail purchases. An absorbing en-suite wrapped in glossy white tiles sits next door. Pale wood stairs lead to the remaining bedrooms, all characterised by an understated luxe and served by immaculate bathrooms. Don't miss the study for home workers – there's fantastic privacy, courtesy of a corrugated Crittall door.





















LOCATION

At once serene and vibrant, Fulham is a neighbourhood notorious for its sense of community, array of shops, eateries and its riverfront scenery.

For all your food cupboard necessities, Whole Foods is just a three-minute walk away. When you need a breath of fresh air, Eel Brook Common is on your doorstep; don't forget your racquets for a game of summer tennis. Or pay a visit to the esteemed Hurlingham Park for a polo match – a firm fixture in London's social calendar. Head to Chelsea and the Kings Road for your retail fix, before spending an evening at Michelin star gastropub The Harwood Arms – home in 10. With Fulham Broadway station across the road, it is easy to head into central London and beyond.





PROPERTY HIGHLIGHTS

- Open-plan kitchen / dining room
- Formal reception room
- Master bedroom with en-suite
- Three further bedrooms
- Study
- Private garden
- Unique design features
- Light and airy



Approx. Gross Internal Area = 2011 sq ft / 186.8 sq m
(Excluding External Cupboards)

Floor plans are for illustrative purposes only and not to scale. Compliant with RICS code of measuring practice.
Prepared for Domus Stay. Copyright © All Rights Reserved.



Please don't hesitate to get in touch if you have any questions or require any further information.

hello@domusstay.com

+44 (0)20 8168 8880

Domus Stay provides the perfect combination of property, place and personal service for the world's most remarkable people. If you have any questions, or if we can help in any way, please contact us on the above number. Be it about a property you have, a property you want, dates to check or any special requirements you may need, we'd love a chat.

