



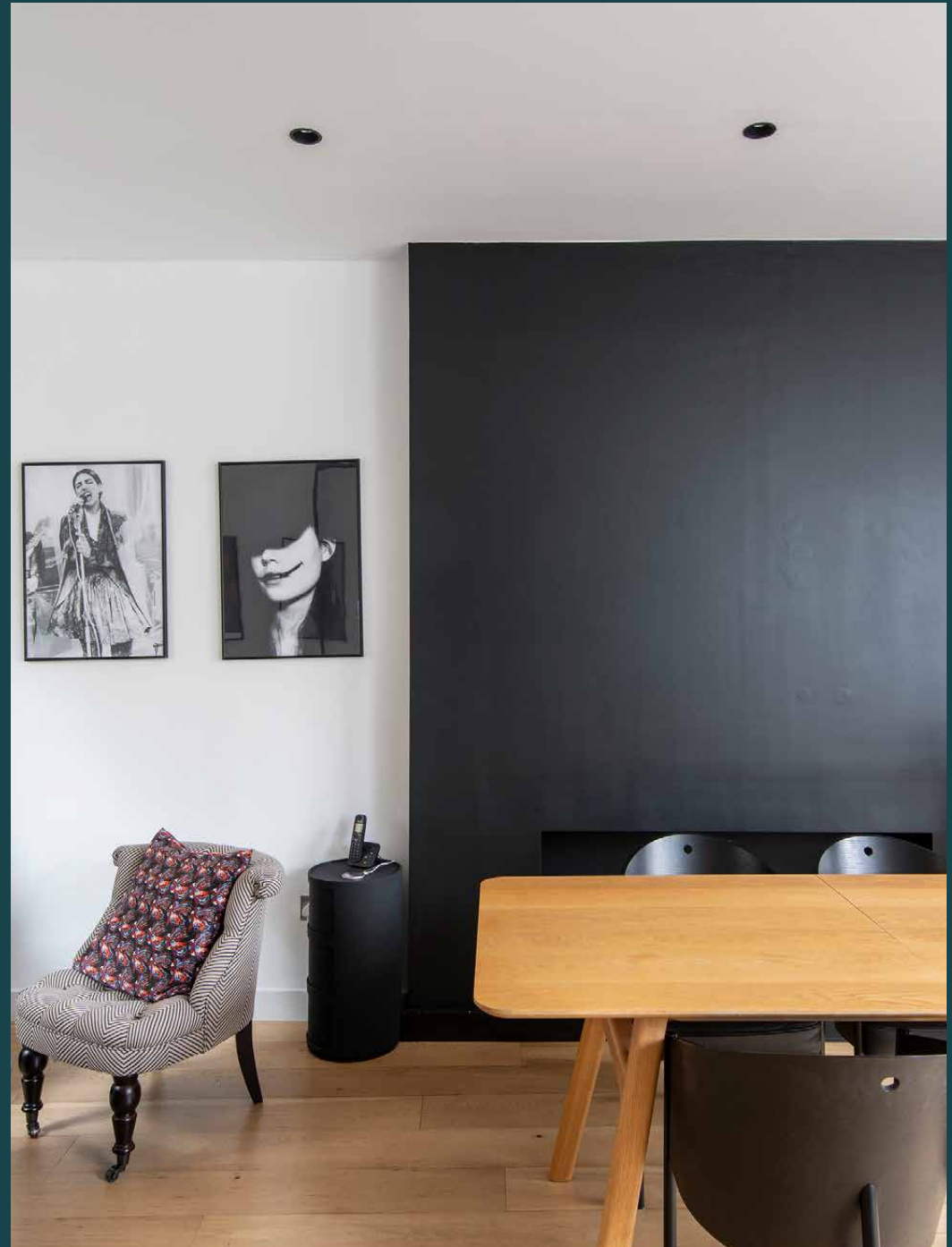
---

# Montpellier Street

Knightsbridge SW7

2 Bedrooms, 2 Bathrooms  
For 4 guests

---





A minimalist palette makes for a thoroughly soothing sanctum. This two-bedroom triplex is a gateway to sophisticated Knightsbridge, Mayfair and Belgravia.

Behind a smart blonde-brick façade and its own front door lies a home poised for modern city living. A pared-back palette with contemporary finishes; beauty in simplicity is realised in this two-bedroom home. The dual-aspect reception room is a calming space, with whitewashed walls and blonde wood floors. Thoughtfully zoned through an archway, the kitchen pairs glossy cabinets and worktops with integrated appliances – making for a streamlined culinary setting. Host intimate dinners around the glass dining table, with farings gathered from the world-renowned emporium of Harrods' food hall.

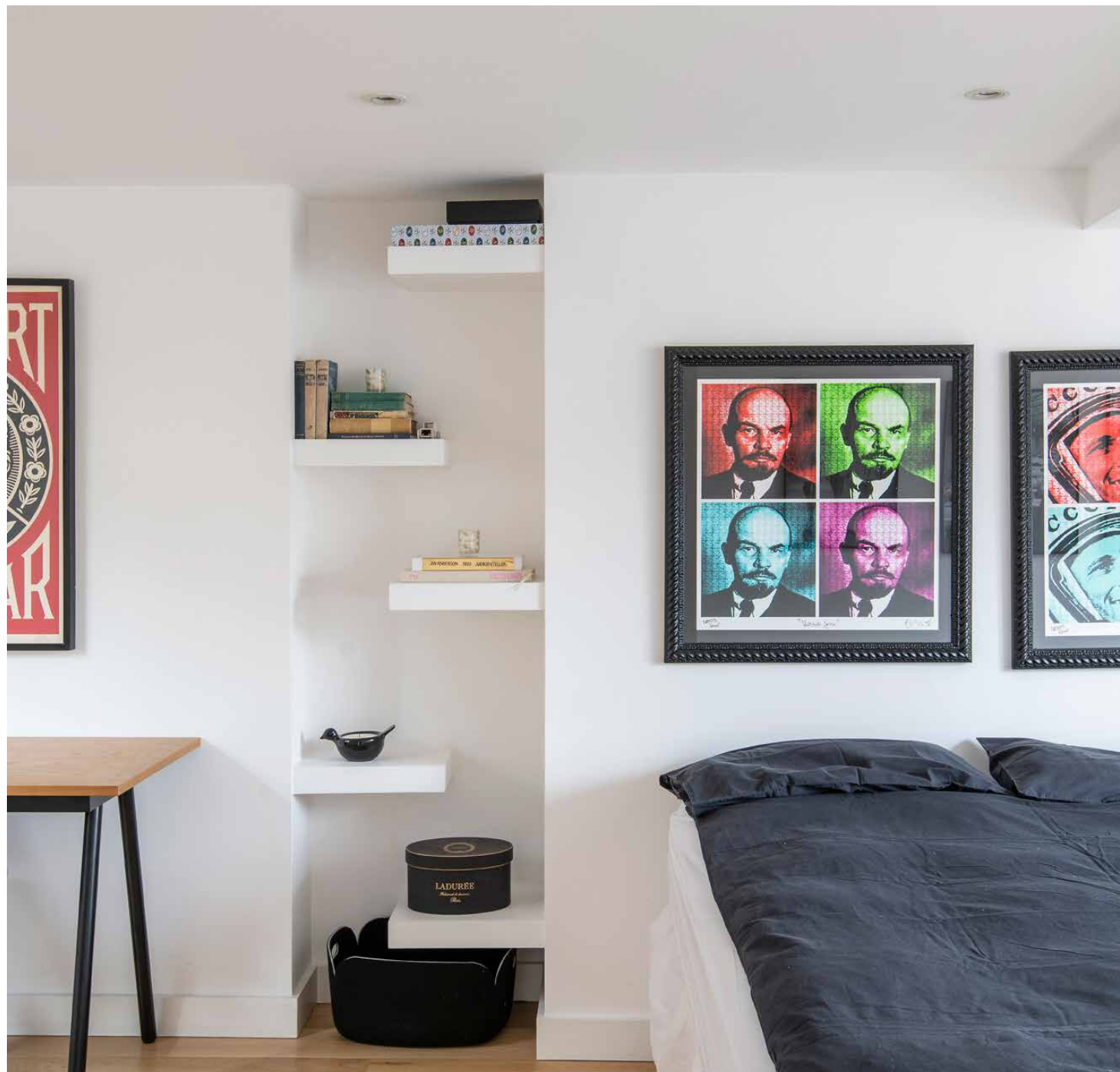




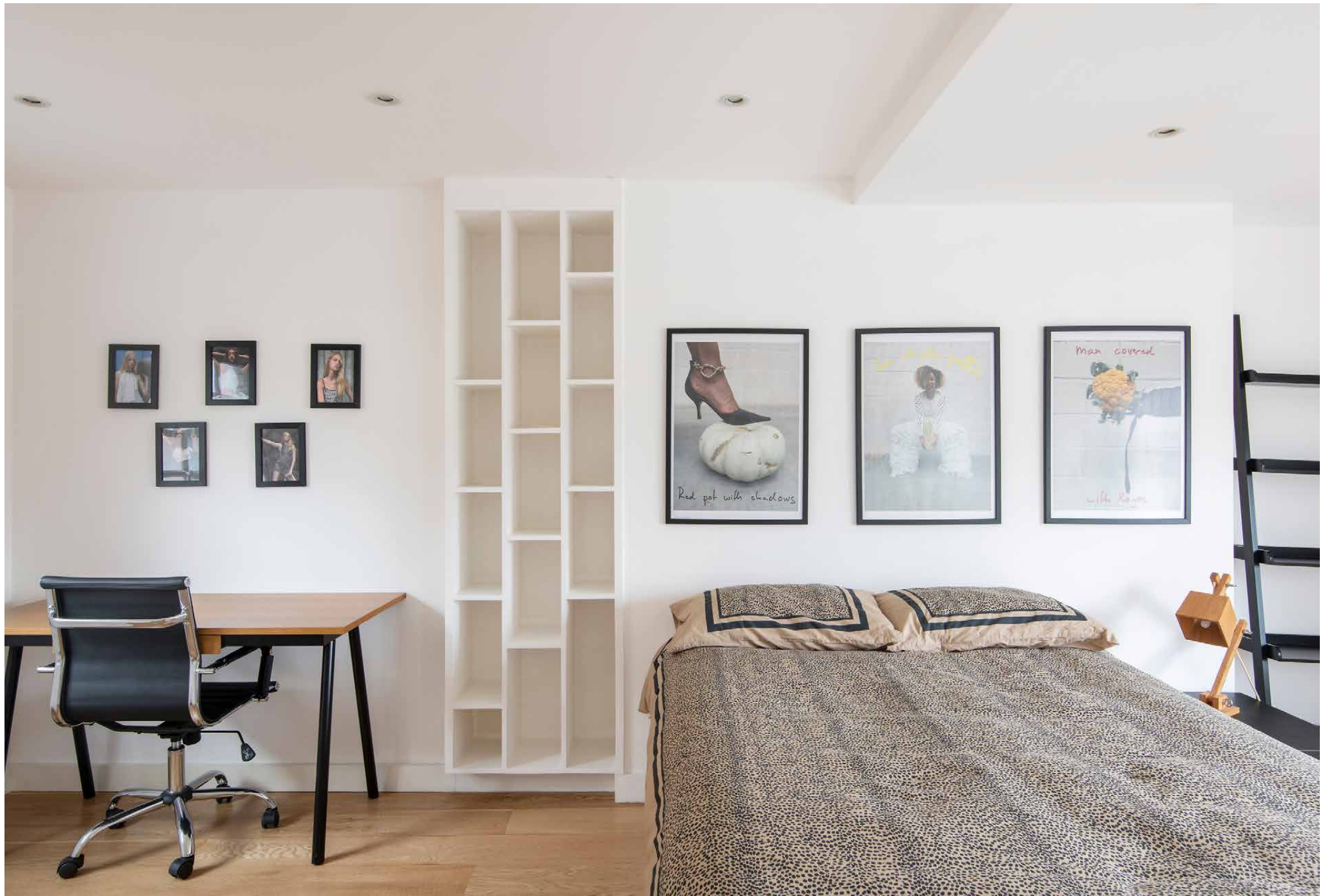




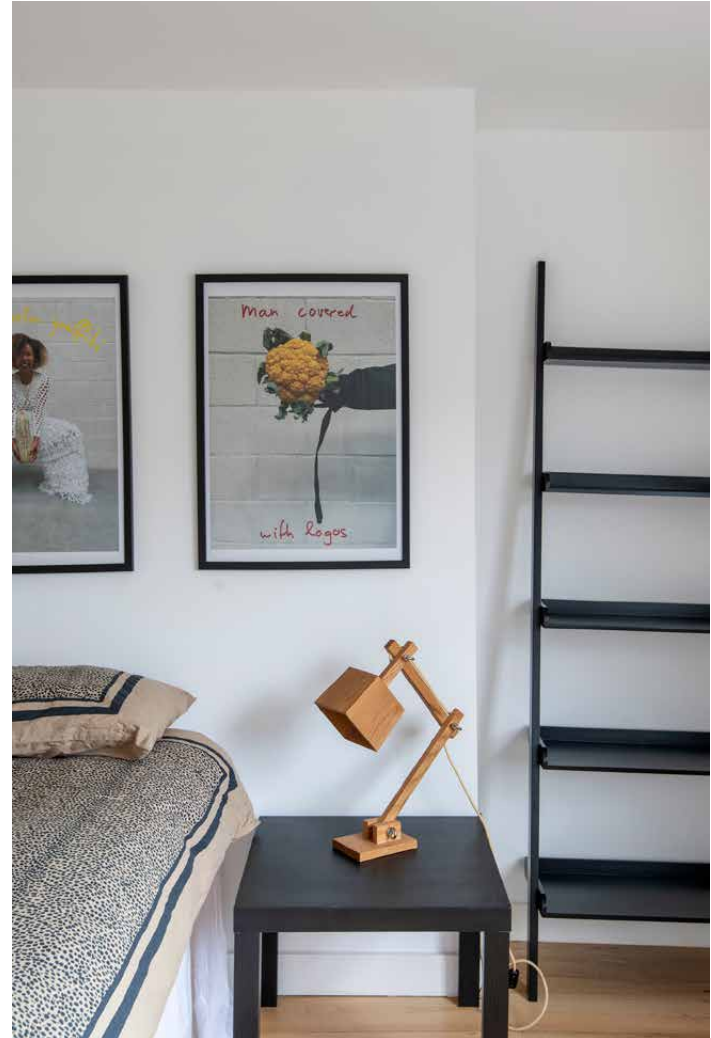
Spread across the second and third floors, two double bedrooms are light-filled and tranquil. The principal bedroom enjoys integrated storage and an en suite bathroom wrapped in pale marble. The guest bedroom downstairs can be reimagined as a quiet study – served by a family-sized bathroom.











## LOCATION

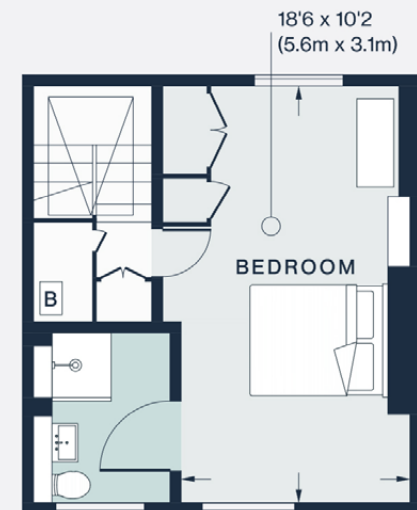
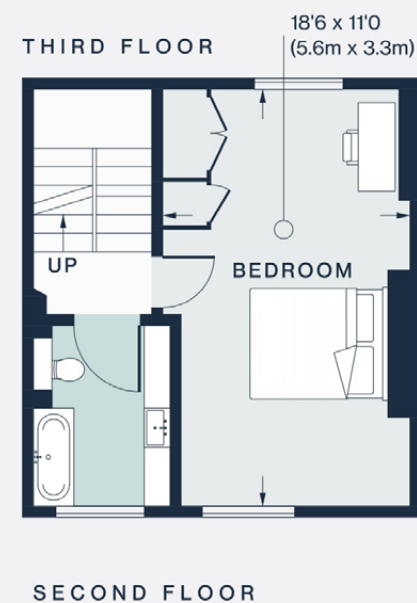
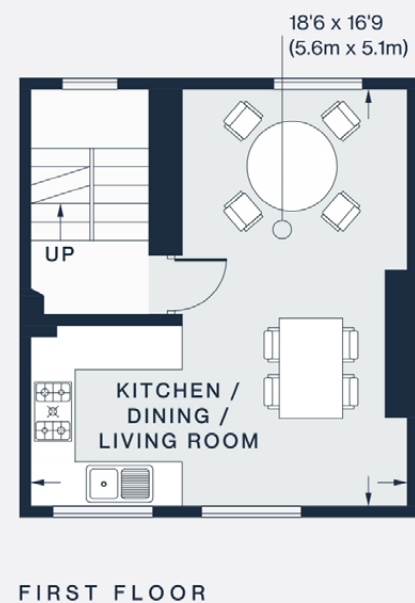
Synonymous with London's most luxurious offerings, Knightsbridge is a neighbourhood poised for the finer things in life.

Its vibrant streets are lined with handsome red-brick townhouses and prestigious hotels, tailor-made for a London staycation with its wealth of shops and restaurants. Immerse yourself in world-renowned Harvey Nichols and Harrods, the prime destinations for innovative fashion, state-of-the-art technology, and sumptuous artisanal produce. A stroll around the verdant lawns of Hyde Park, then take an early-morning dip at The Serpentine Lido, tennis, or horse-riding lessons. For a spot of culture, the Royal Albert Hall and Victoria and Albert Museum are nearby, as are the storied streets of Belgravia and Mayfair. Favourite haunts for fine dining include Zuma, Dinner by Heston Blumenthal, and the highly photogenic EL&N café.



### PROPERTY HIGHLIGHTS

- Contemporary triplex apartment
- Open-plan kitchen and reception room
- Principal bedroom suite
- Guest bedroom suite
- Private street entrance
- Royal Borough of Kensington & Chelsea



Approx. Gross Internal Area = 1,003 sq ft / 93.2 sq m

Floor plans are for illustrative purposes only and not to scale. Compliant with RICS code of measuring practice.  
Prepared for Domus Stay. Copyright © All Rights Reserved.





Please don't hesitate to get in touch if you have any questions or require any further information.

---

[hello@domusstay.com](mailto:hello@domusstay.com)

+44 (0)20 8168 8880

Domus Stay provides the perfect combination of property, place and personal service for the world's most remarkable people. If you have any questions, or if we can help in any way, please contact us on the above number. Be it about a property you have, a property you want, dates to check or any special requirements you may need, we'd love a chat.

