

domus  
stay.

---

# Montpelier Street II

KNIGHTSBRIDGE

4 Bedrooms, 3 Bathrooms  
For 8 guests

---





A towering townhouse to rent in the heart of Knightsbridge. Spacious in design and welcoming in feel.

There's an understated elegance to this handsome, stucco-fronted home. Five spacious floors are enlivened with carefully considered furnishings and materials, curating a thoroughly engaging family setting.





# The living spaces

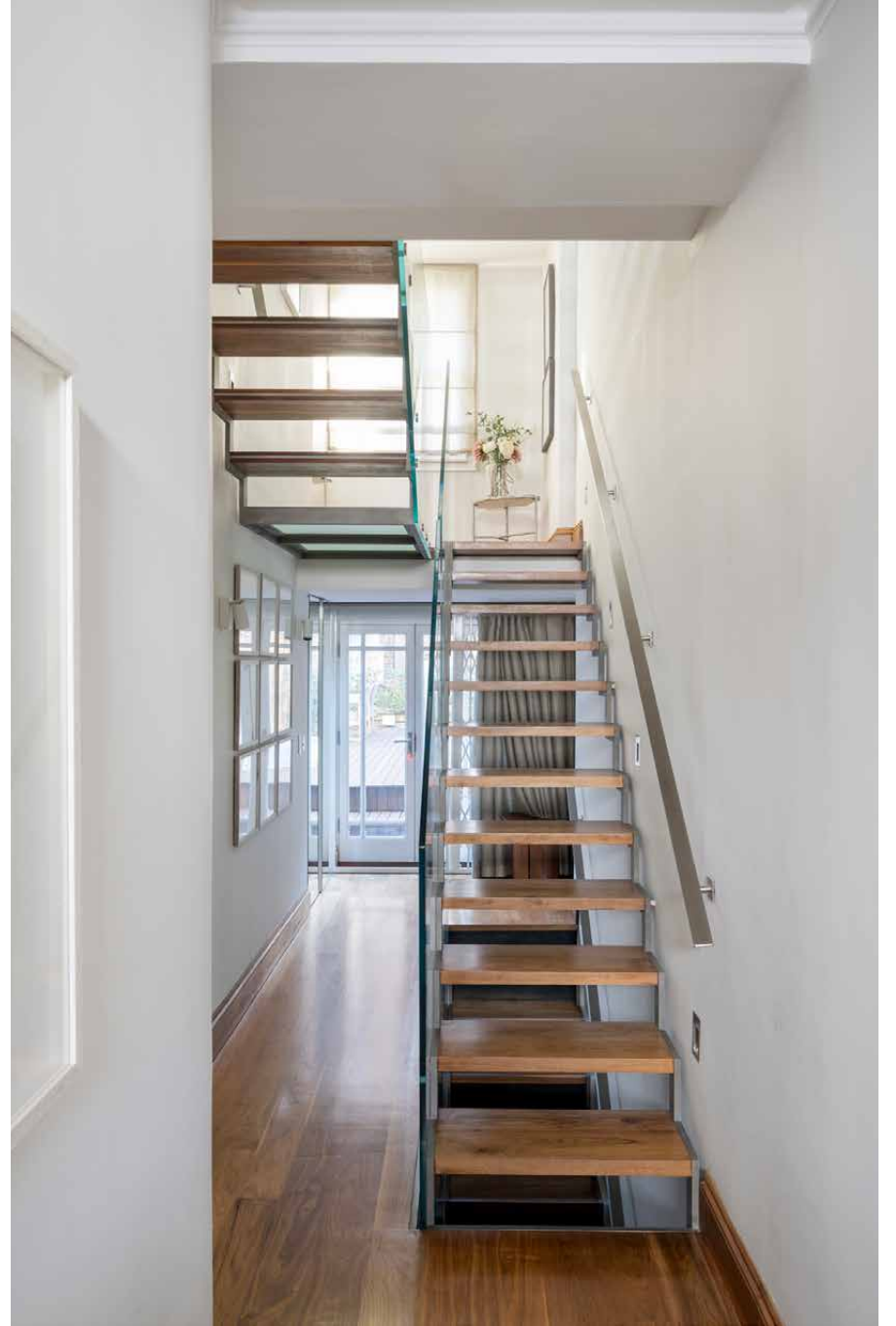
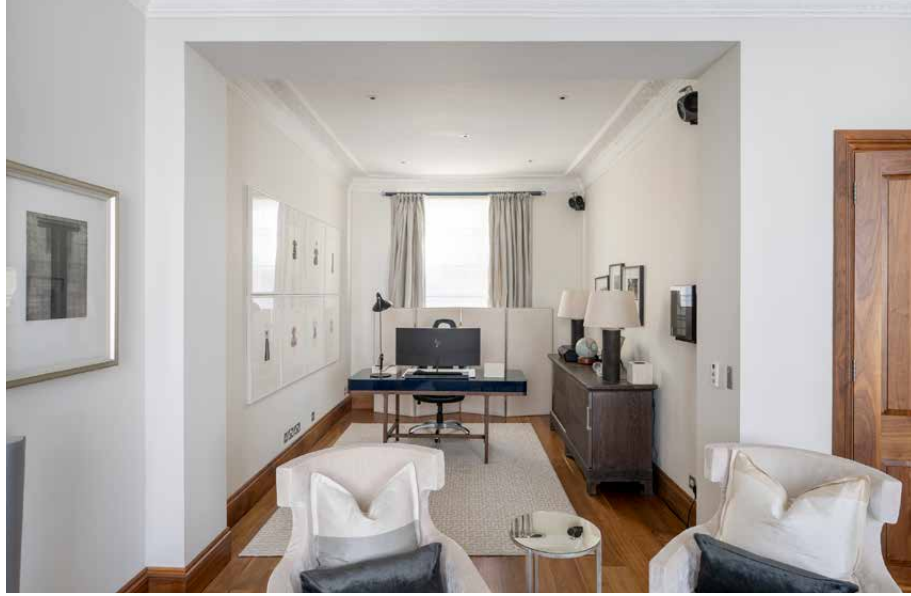
Downstairs, family living continues into the sitting room; natural light abounds, drawn through skylights spanning the length of the room. Cosy spots invite conversation, movie marathons or reading sessions, while nimble-fingered guests can make use of the piano.

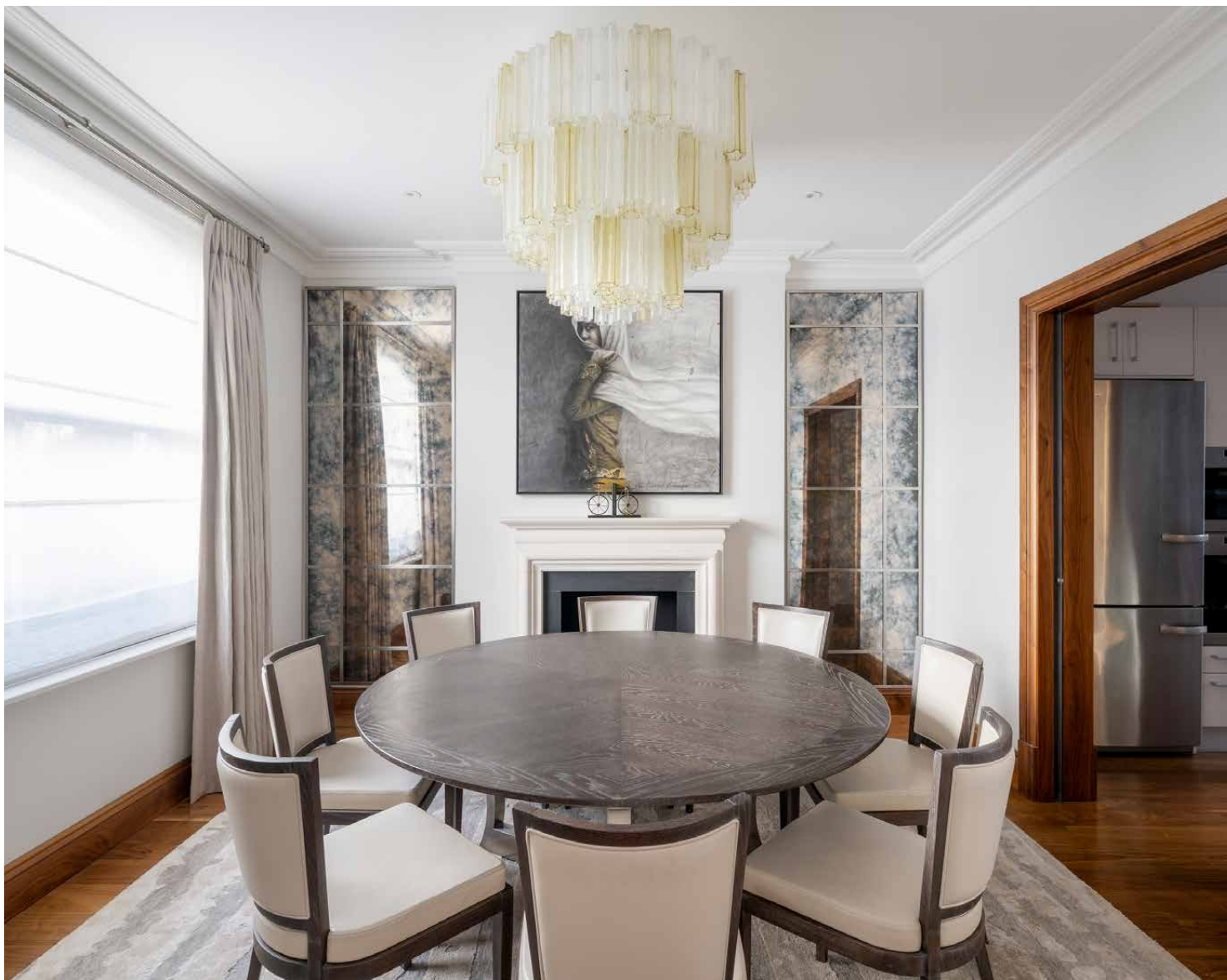
On the first floor, a formal reception room is a sophisticated affair. Ornate period features and a Murano glass barbell chandelier adorn the ceiling, accentuating lofty proportions. Vast sash windows illuminate a myriad of interior details, from a grand fireplace to an expansive sofa made for relaxing. Grab a book or boardgame and settle down for the evening. On rainy days, take advantage of the Sky box. Detached discreetly from the rest of the room is a study.











## Kitchen & dining

The open-plan kitchen and dining is set up for entertaining, with sliding pocket doors that subtly divide the space. Pairing old and new, high ceilings with heritage corning mix with contemporary furnishings and striking antique mirrored walls. A marble-topped island provides the centrepiece in the kitchen, framed by white cabinets and integrated Miele appliances. In the dining room, a period fireplace creates an atmospheric backdrop for an eight-seater table. Accessed from this floor, an expansive terrace stretches eastwards – enjoying plenty of light in the morning, with shady spots in the afternoon.



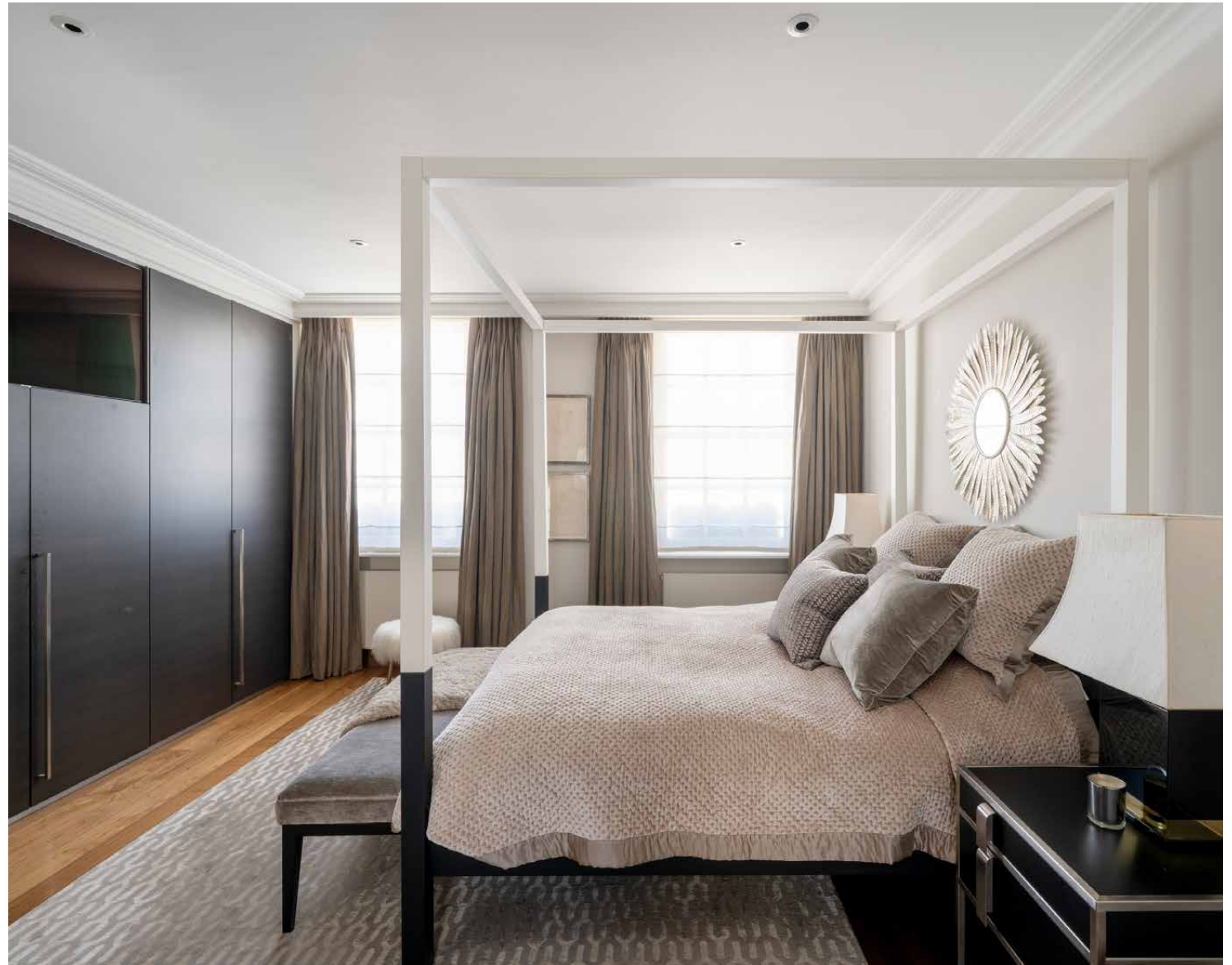




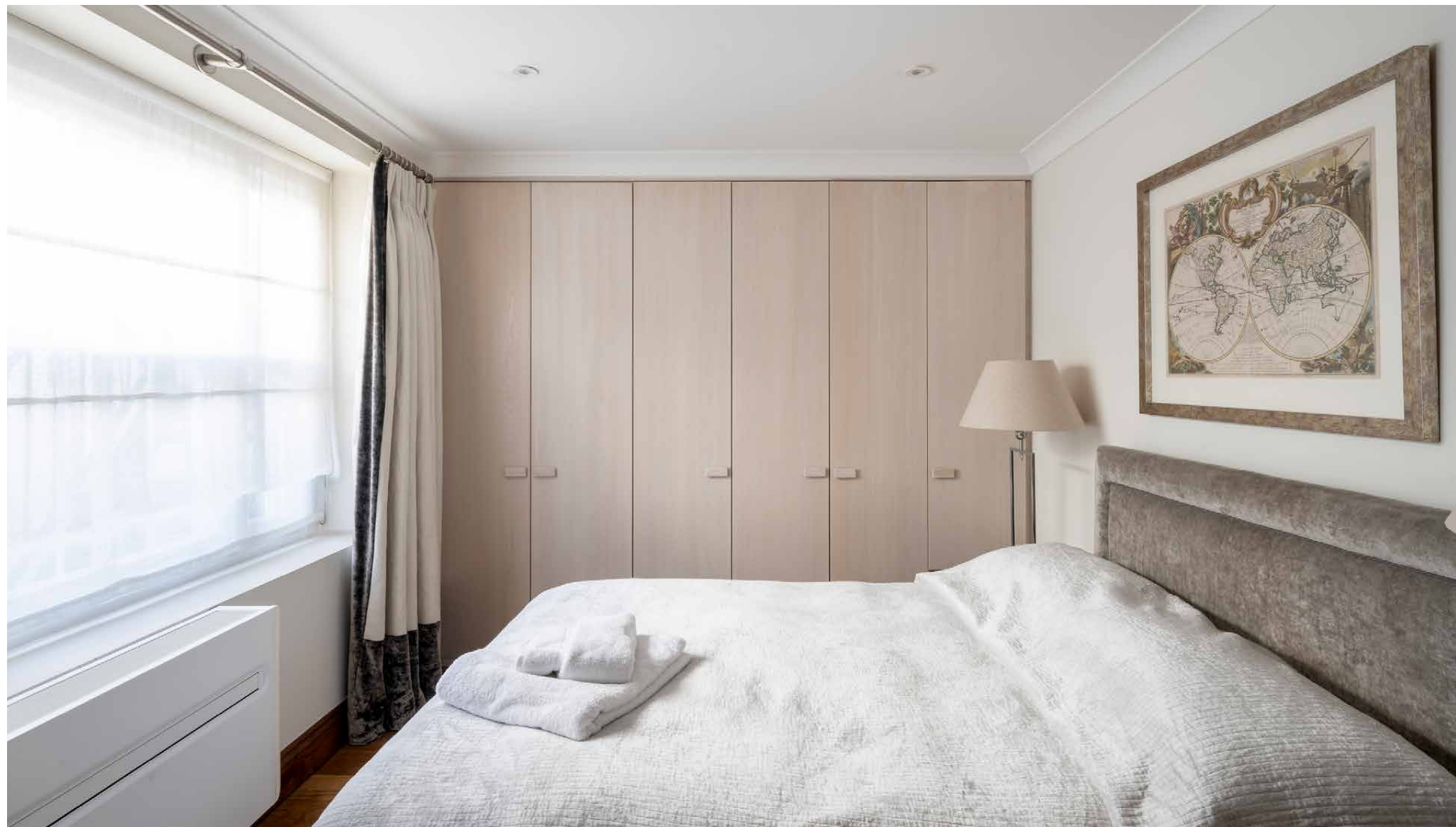
# Bedrooms & bathrooms

Occupying the entire second floor is the principal bedroom suite. Tonal décor, a wood-framed four-posted bed and wall-to-wall custom wardrobes afford an elegant character to the sunlit setting. Air conditioning ensures this is a room for all seasons. Through double doors, a vanity with dual sinks awaits in the en suite bathroom, alongside a bathtub and enticing shower.

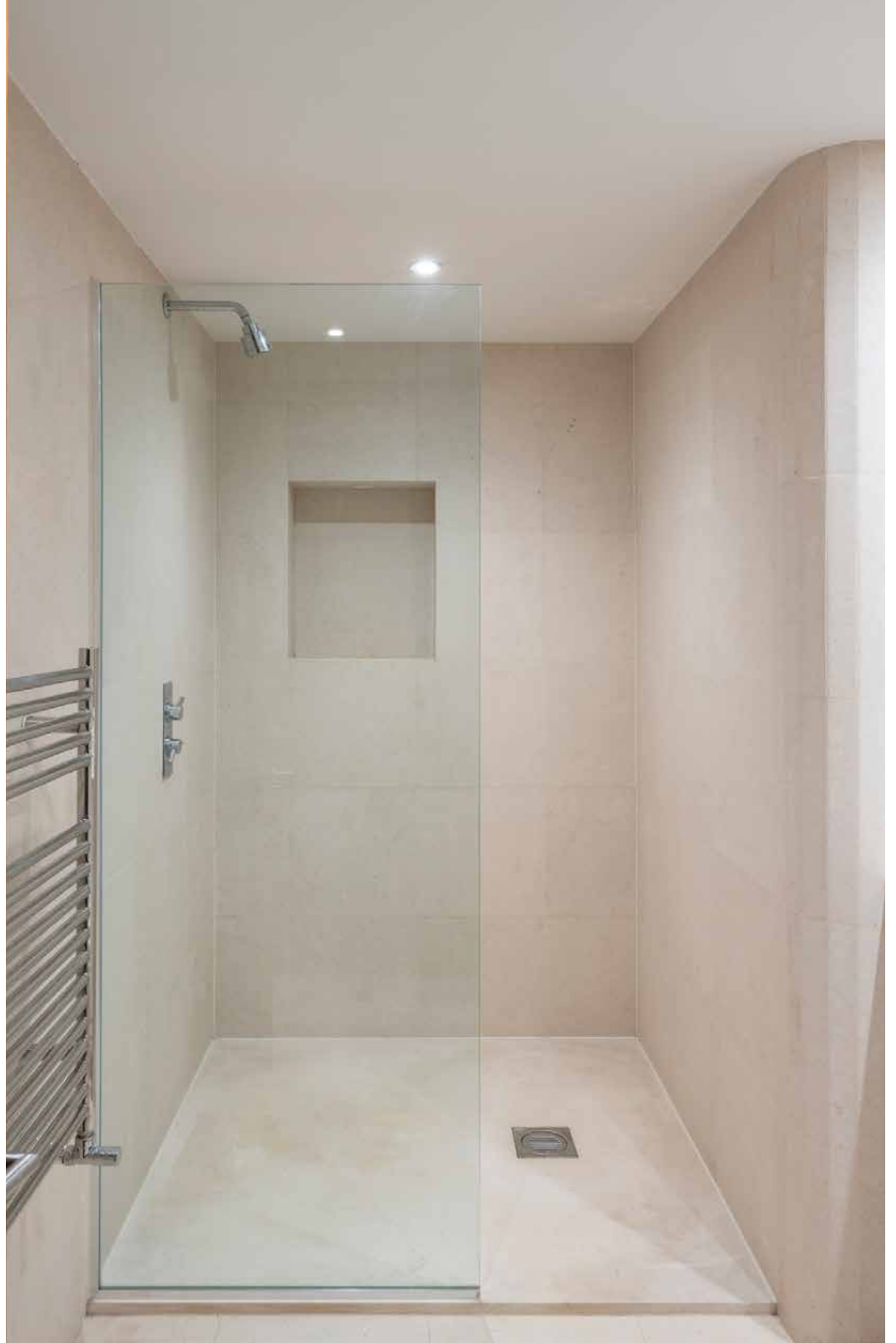
Two additional bedrooms are spread across the top floor, both with queen beds. Characteristic of the home's interior style, they are finished with white walls, wood floors and splashes of jewel tones. A bathroom in pale pink tiles, crowned with intricate corning and a skylight, serves both rooms.









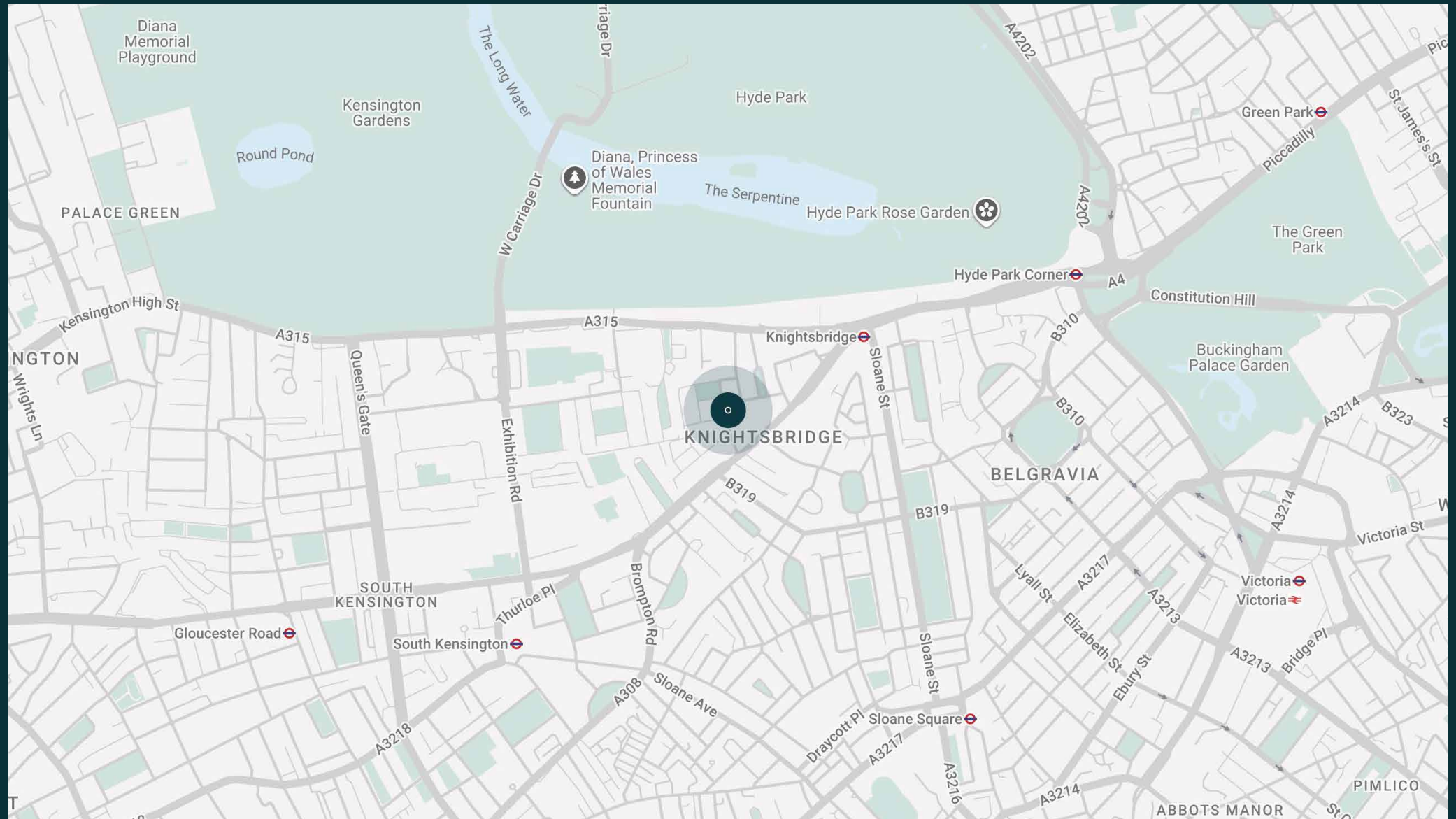


# The neighbourhood

On a handsome street five minutes' walk from Hyde Park, this eye-catching house is close to some of London's best attractions and restaurants.

An array of shops are found within a short stroll, or for culture, choose between the V&A Museum and the world-famous Royal Albert Hall. Local Michelin-starred restaurants include Amaya for refined Indian cuisine or Dinner by Heston Blumenthal for molecular gastronomy. Alternatively, dine at Gordon Ramsay's Pétrus and enjoy a nightcap at The Alfred Tennyson. For green spaces, Hyde Park is on your doorstep and Green Park is only a short walk away.







# Property features

- Double reception room
- Contemporary kitchen
- Principal bedroom suite with dressing room
- Three further bedroom suites
- Guest bedroom
- Patio garden
- Roof terrace and additional living room
- Cloakroom
- Garage
- Study
- Snug

Approx. 614 sq m / 6,611 sq ft



Approx. Gross Internal Area = 2,845 sq ft / 264.4 sq m (Including Vault)

Floor plans are for illustrative purposes only and not to scale. Compliant with RICS code of measuring practice.

# Guest & concierge services

Our concierge team are here to help guests settle in, seamlessly. Centre court tickets to Wimbledon, Premier League seats with the best views, Savile Row tailors on standby, or a private chef to cater to individual tastes – we aim to elevate every stay.

From the moment of booking with us, each guest has a single point of contact to finesse the details. Our statement spaces are just the starting point – to ensure everyone feels at home, our rates include:

- 
- Weekly housekeeping
  - Flexible check-in/out
  - Luxury linens and Bamford toiletries
  - Legal compliance on all our homes
  - A personal welcome and arrival essentials
  - Unlimited access to guest services and tailored experiences
  - Professional inventory inspection before and after every stay
  - Access to a curated portfolio of sole agency properties



# domus stay.

Please get in touch if you have any questions  
or require any further information.

[hello@domusstay.com](mailto:hello@domusstay.com)

+44 (0)20 8168 8880

The property particulars are a guide not statements. Descriptions, photographs, and plans are for guidance only. The Property is offered "subject to contract and references". No warranties, representations, License or Tenancy is given by Domus Stay. Our full disclaimer together with trading names and our Privacy Policy is shown on our website

© Domus Stay 2025. All rights reserved.

