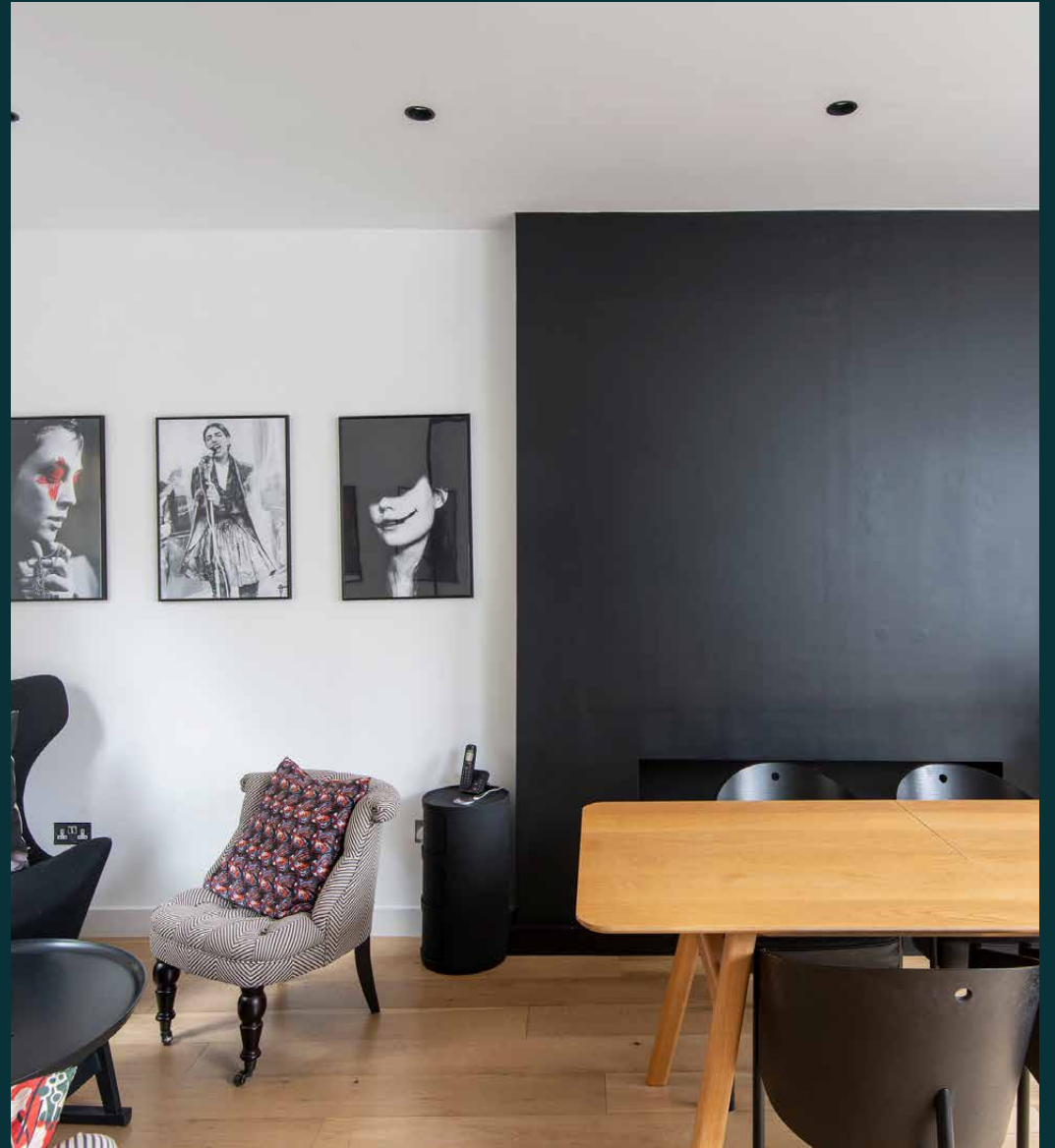


domus
stay.

Montpelier Street

KNIGHTSBRIDGE

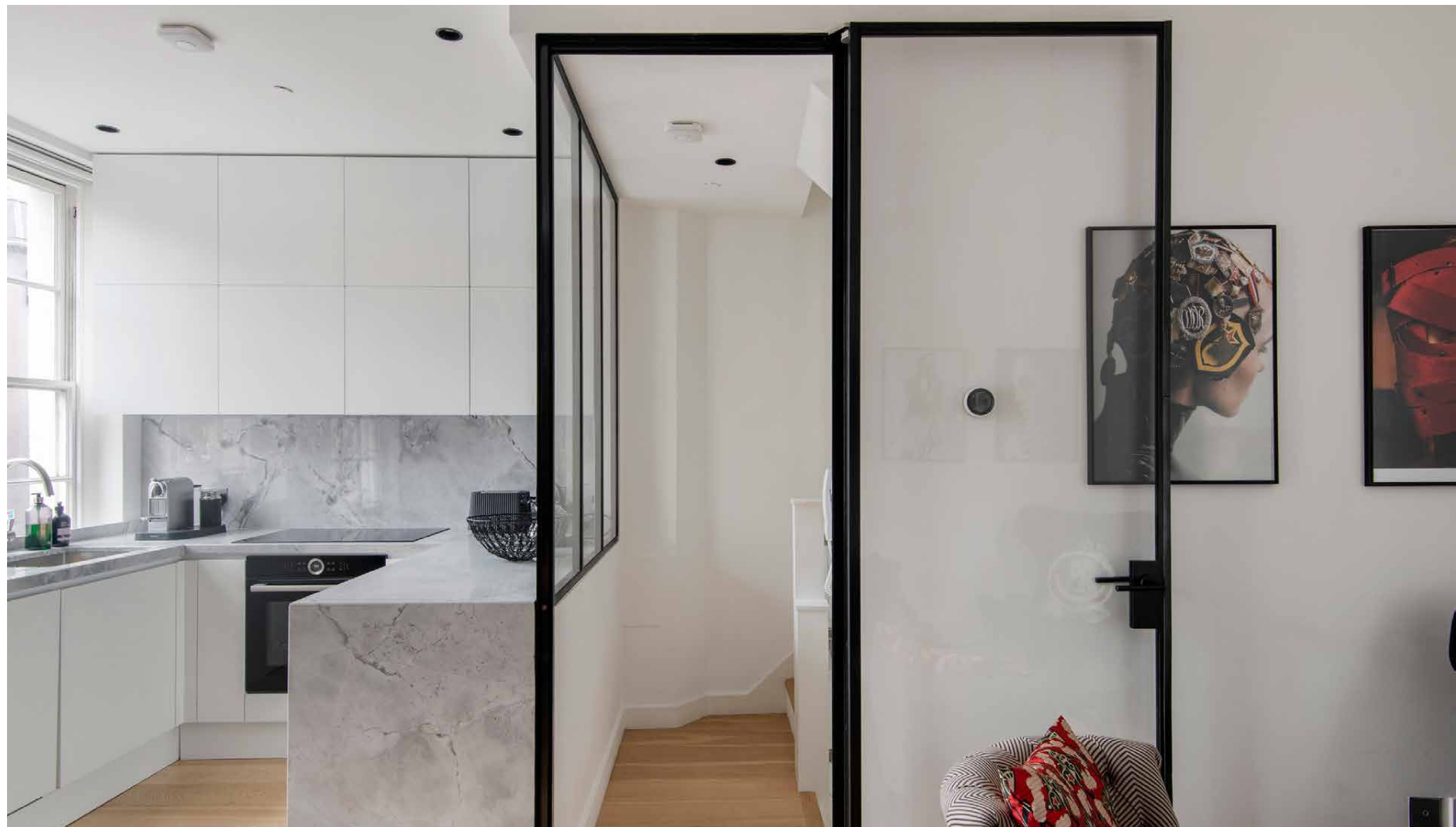
2 Bedrooms, 2 Bathrooms
For 4 guests





This two-bedroom triplex is a gateway to sophisticated Knightsbridge, Mayfair and Belgravia.

Behind a smart blonde-brick façade and its own front door lies a home poised for modern city living. A pared-back palette with contemporary finishes; beauty in simplicity is realised in this two-bedroom home.



Living spaces

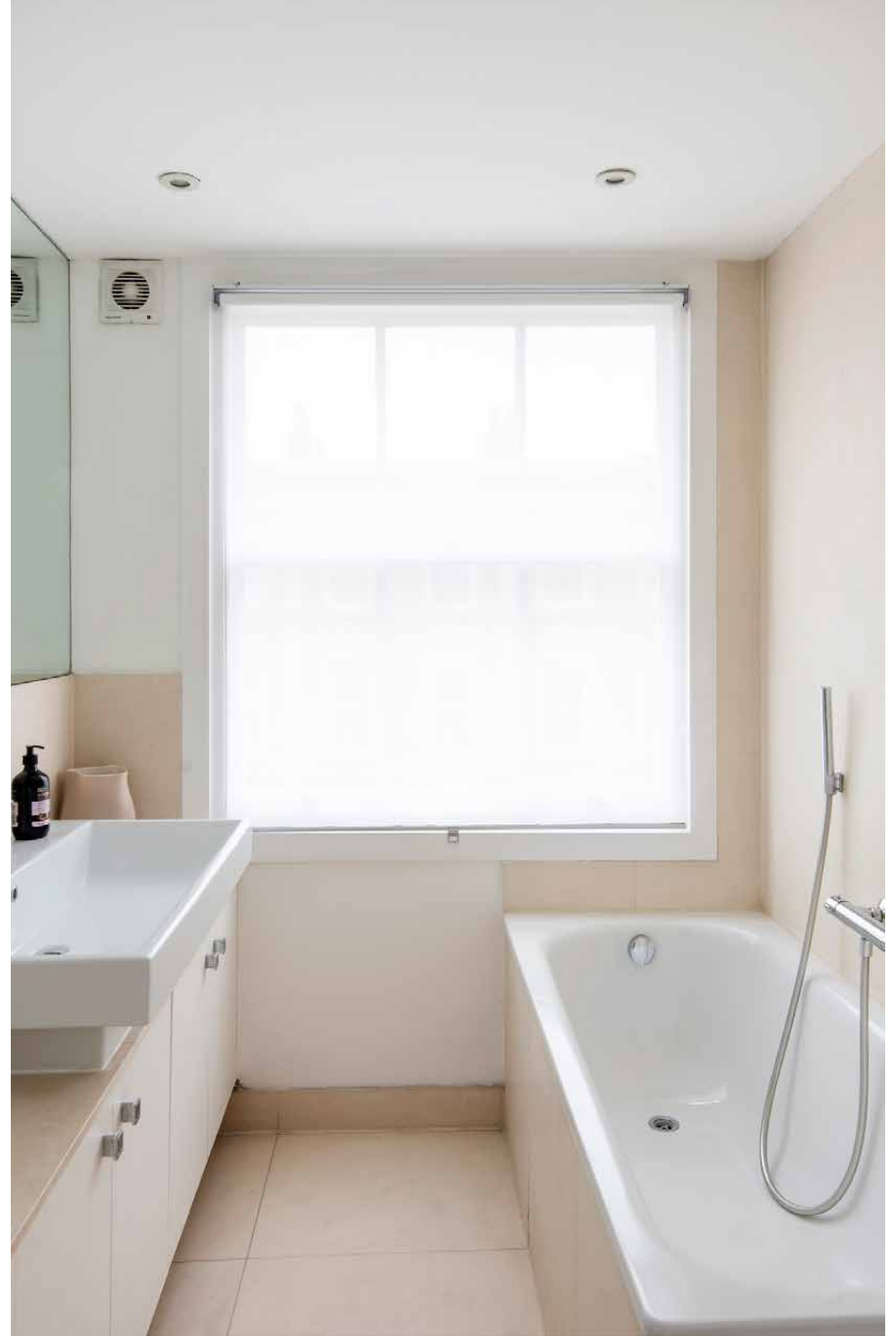
The dual-aspect reception room is a calming space, with whitewashed walls and light wood floors. Thoughtfully zoned through an archway, the kitchen pairs glossy cabinets and worktops with integrated appliances – making for a streamlined culinary setting. Host intimate dinners around the glass dining table, with delicacies gathered from the world-renowned emporium of Harrods' food hall.





Bedrooms & Bathrooms

Spread across the second and third floors, two double bedrooms are light-filled and tranquil. The principal bedroom enjoys integrated storage and an en suite bathroom wrapped in pale marble. The guest bedroom downstairs can be reimagined as a quiet study – served by a family-sized bathroom.

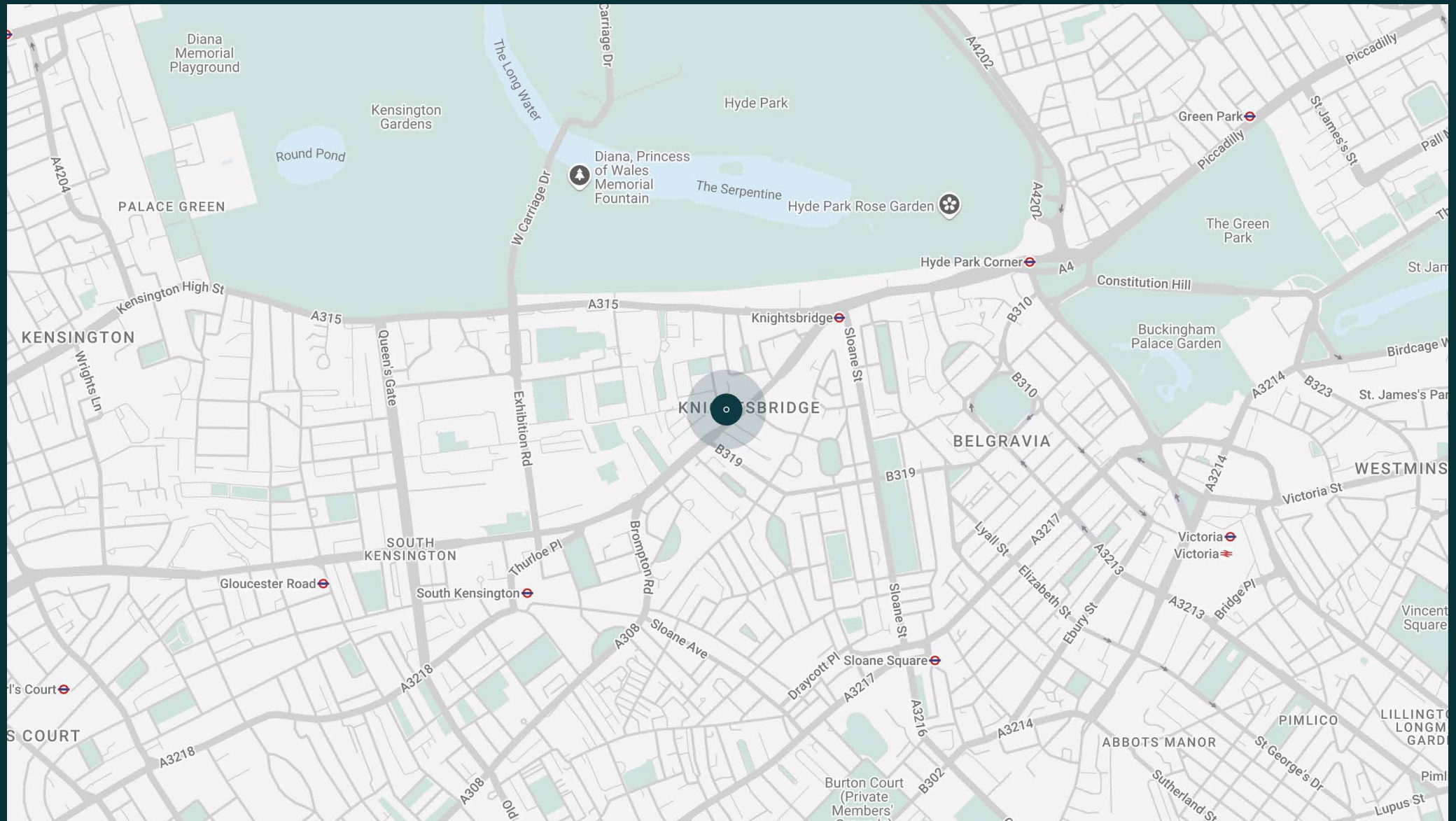


The neighbourhood

Synonymous with London's most luxurious offerings, Knightsbridge is a neighbourhood poised for the finer things in life.

Its vibrant streets are lined with handsome red-brick townhouses and prestigious hotels, tailor-made for a London staycation with its wealth of shops and restaurants. Immerse yourself in world-renowned Harvey Nichols and Harrods, the prime destinations for innovative fashion, state-of-the-art technology, and sumptuous artisanal produce. A stroll around the verdant lawns of Hyde Park, then take an early-morning dip at The Serpentine Lido, tennis, or horse-riding lessons. For a spot of culture, the Royal Albert Hall and Victoria and Albert Museum are nearby, as are the storied streets of Belgravia and Mayfair. Favourite haunts for fine dining include Zuma, Dinner by Heston Blumenthal, and the highly photogenic EL&N café.

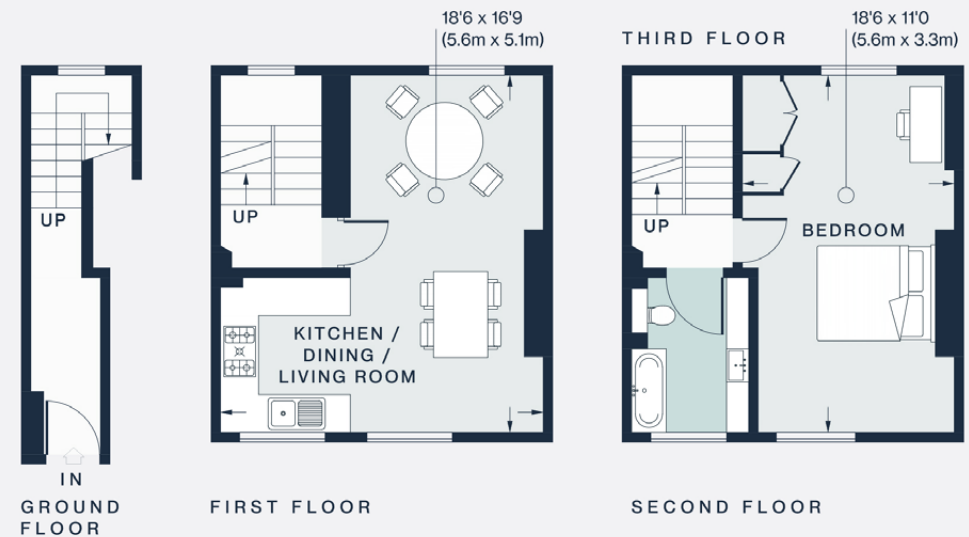




Property features

- Contemporary triplex apartment
- Open-plan kitchen and reception room
- Principal bedroom suite
- Guest bedroom suite
- Private street entrance
- Royal Borough of Kensington and Chelsea

Approx. 1,003 sq ft / 93.2 sq m



Approx. Gross Internal Area = 1,003 sq ft / 93.2 sq m

Floor plans are for illustrative purposes only and not to scale. Compliant with RICS code of measuring practice.
Prepared for Domus Stay. Copyright © All Rights Reserved.

Guest & concierge services

Our concierge team are here to help guests settle in, seamlessly. Centre court tickets to Wimbledon, Premier League seats with the best views, Savile Row tailors on standby, or a private chef to cater to individual tastes – we aim to elevate every stay.

From the moment of booking with us, each guest has a single point of contact to finesse the details. Our statement spaces are just the starting point – to ensure everyone feels at home, our rates include:

-
- Weekly housekeeping
 - Flexible check-in/out
 - Luxury linens and Bamford toiletries
 - Legal compliance on all our homes
 - A personal welcome and arrival essentials
 - Unlimited access to guest services and tailored experiences
 - Professional inventory inspection before and after every stay
 - Access to a curated portfolio of sole agency properties





Please get in touch if you have any questions
or require any further information.

hello@domusstay.com

+44 (0)20 8168 8880

The property particulars are a guide not statements. Descriptions, photographs, and plans are for guidance only. The Property is offered "subject to contract and references". No warranties, representations, License or Tenancy is given by Domus Stay. Our full disclaimer together with trading names and our Privacy Policy is shown on our website

© Domus Stay 2025. All rights reserved.

