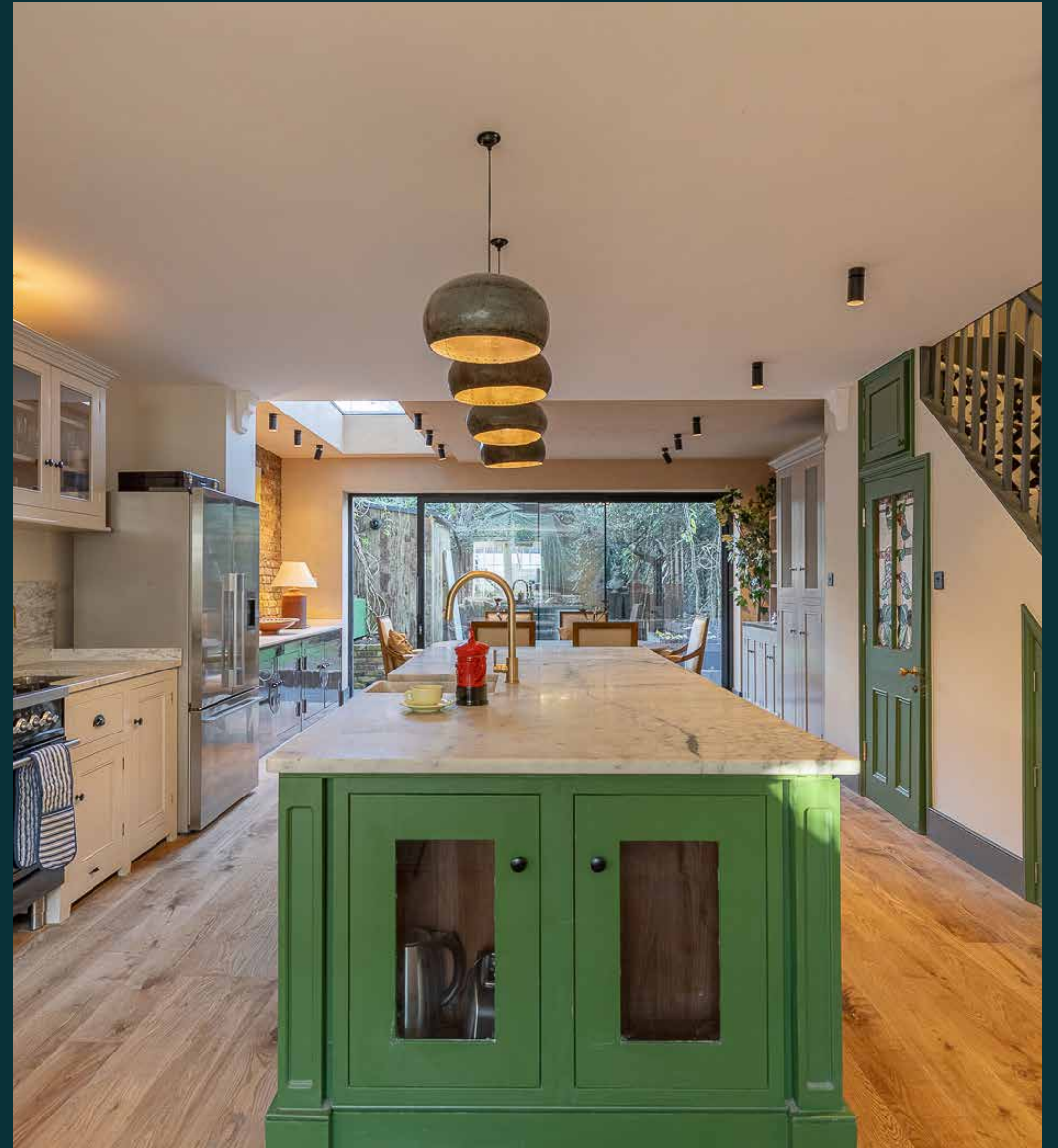


domus
stay.

Malden Road

HAMPSTEAD NW5

3 Bedrooms, 2 Bathrooms
For 6 guests





A welcoming atmosphere prevails at this three-bedroom home, with open-plan aspects and uplifting colours.

In a peaceful residential enclave between Belsize Park and Kentish Town, Malden Road makes a picturesque first appearance with wisteria climbing across its façade. Inside, social spaces unravel with reams of natural light and tactile materials.

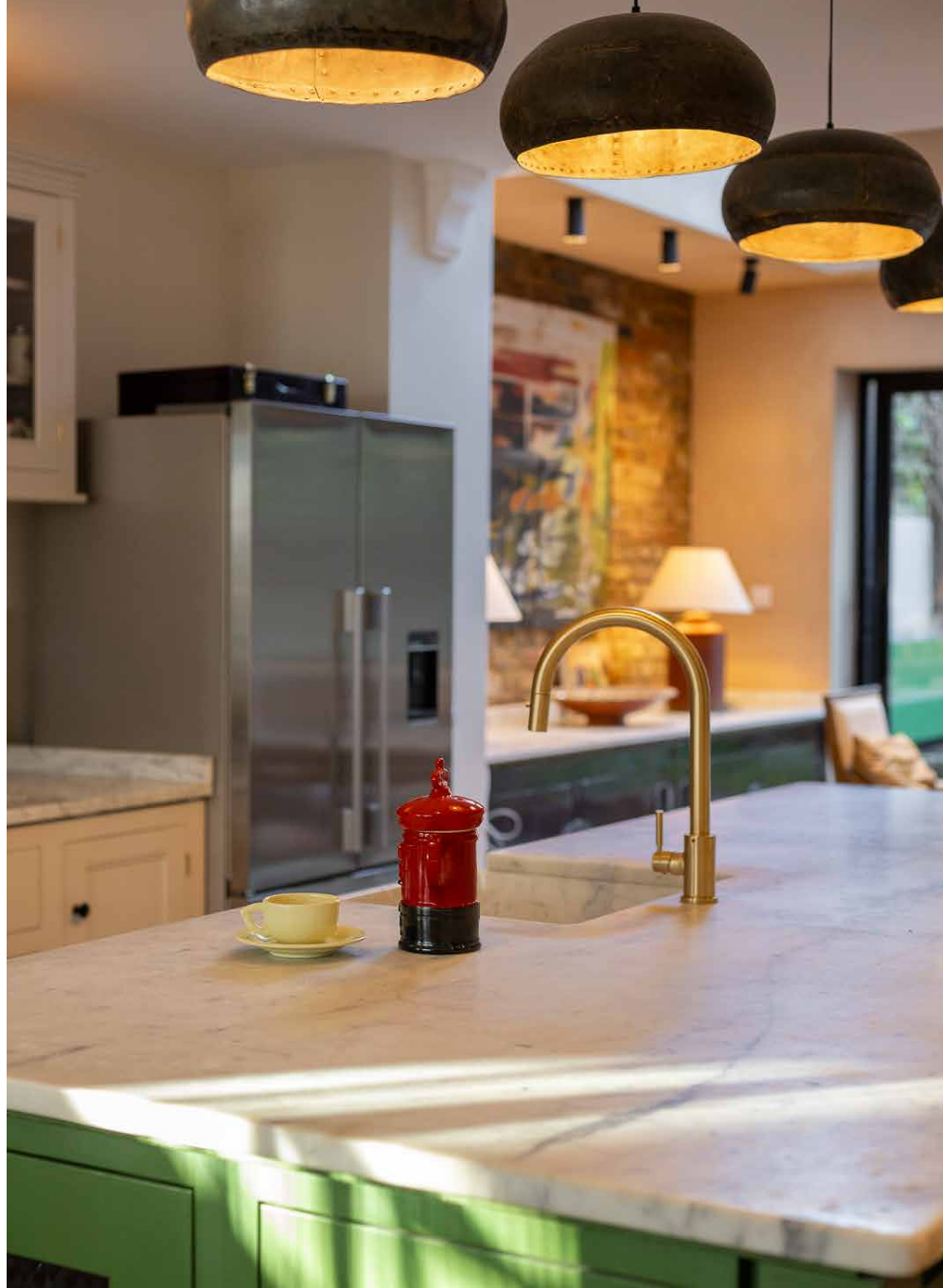
The living space

Bathed in natural light and with warm wood floors running underneath, the open-plan kitchen, dining and living room forms the inviting social heart. At one end of the space, a cosy sofa and wicker armchairs are poised for conversation. The eye is drawn to the marble-topped kitchen island – finished in a rich green hue – which is illuminated by a series of pendant lights above. A skylight further illuminates the setting, while an exposed brick wall adds textural charm. The range oven is set for culinary creativity; gather friends around the wooden dining table and in warm weather, draw back the full-height glazing to the private garden beyond.

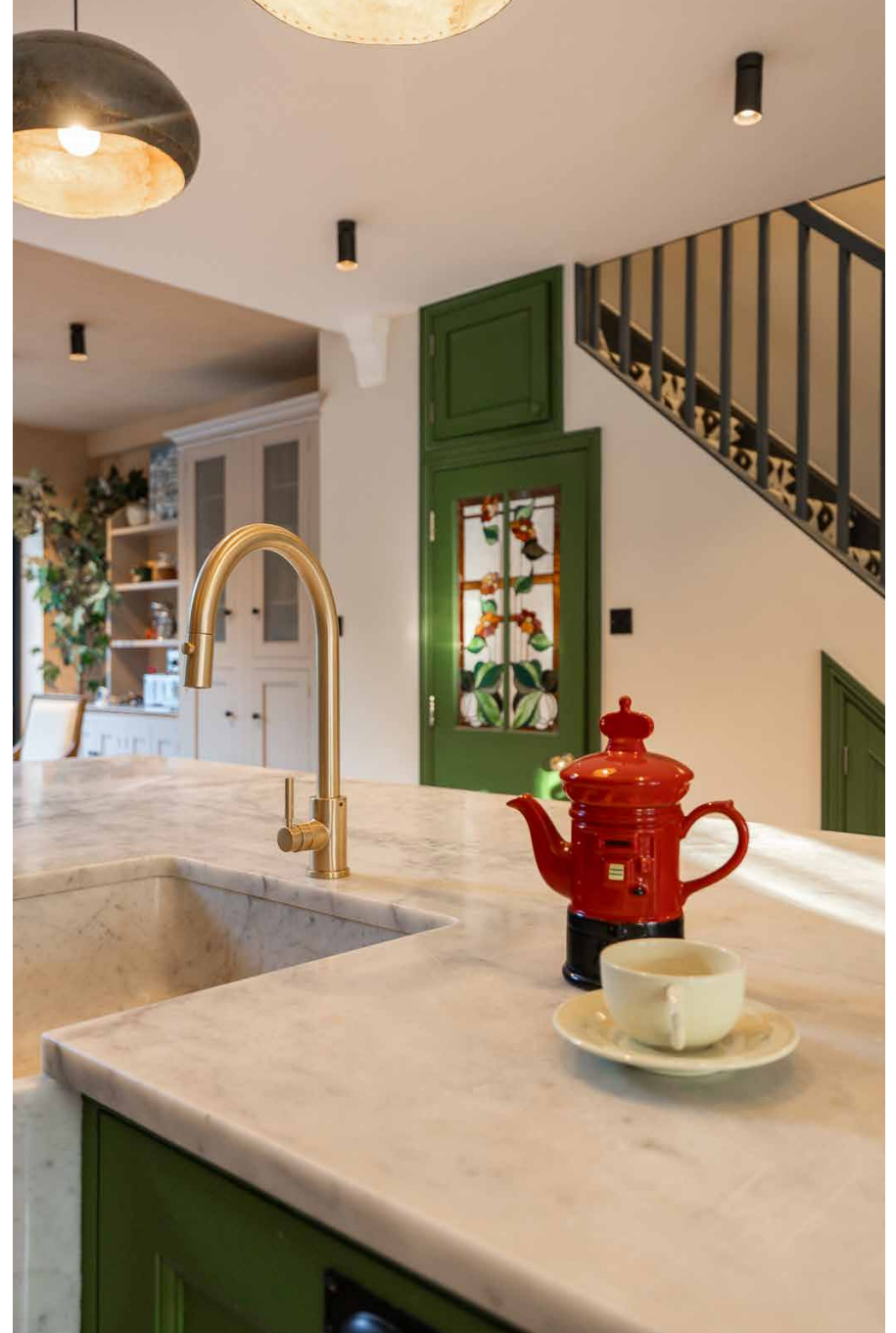




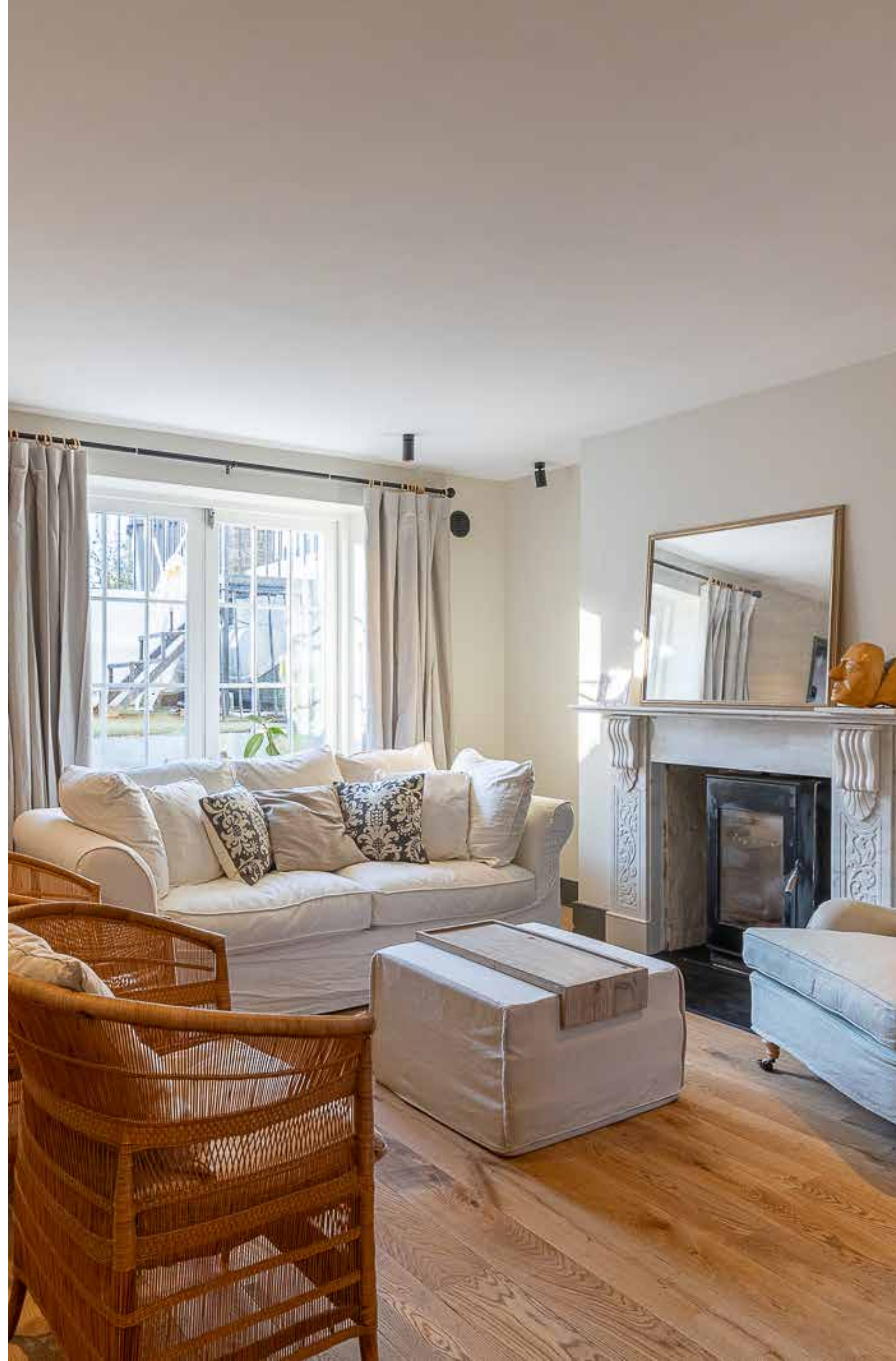




“The eye is drawn to the marble-topped kitchen island – finished in a rich green hue – which is illuminated by a series of pendant lights above.”





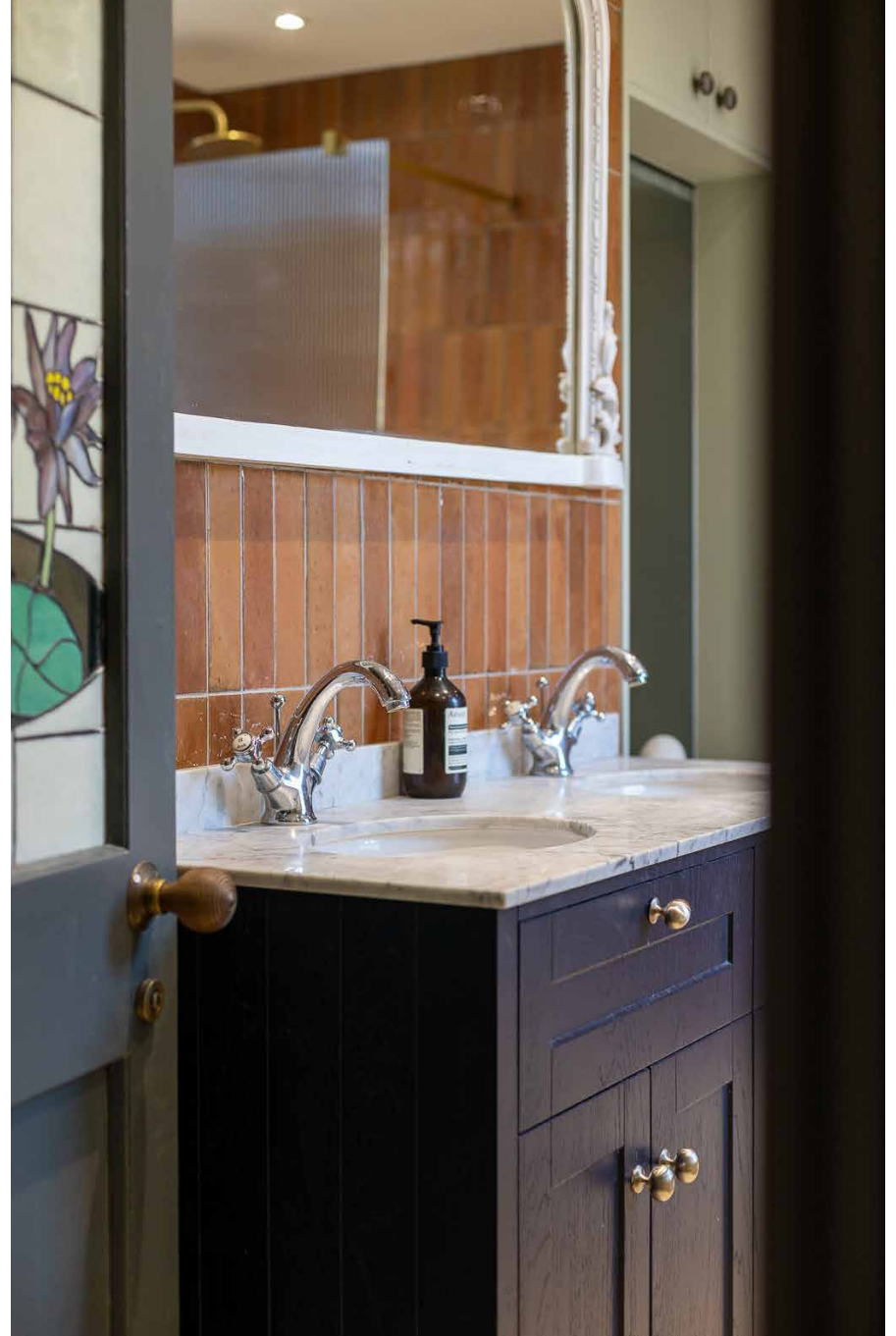




Bedrooms & bathrooms

Upstairs, three bedrooms are calming and considered spaces. Large sash windows fill the principal bedroom with sunlight, while two matching bookshelves are filled with page-turners. In one of the guest bedrooms, a full-height picture window enjoys a tranquil view of the garden. In the other, a desk area is located beneath a mezzanine level, with a ladder leading up to the bed. Serving these spaces is the contemporary family bathroom, introduced through a stained-glass door. Stylish finishes range from the walk-in shower, freestanding bath and dual vanity, wrapped in a variety of marbled, speckled and terracotta-toned tiling. An additional WC completes the home.





Outdoor space

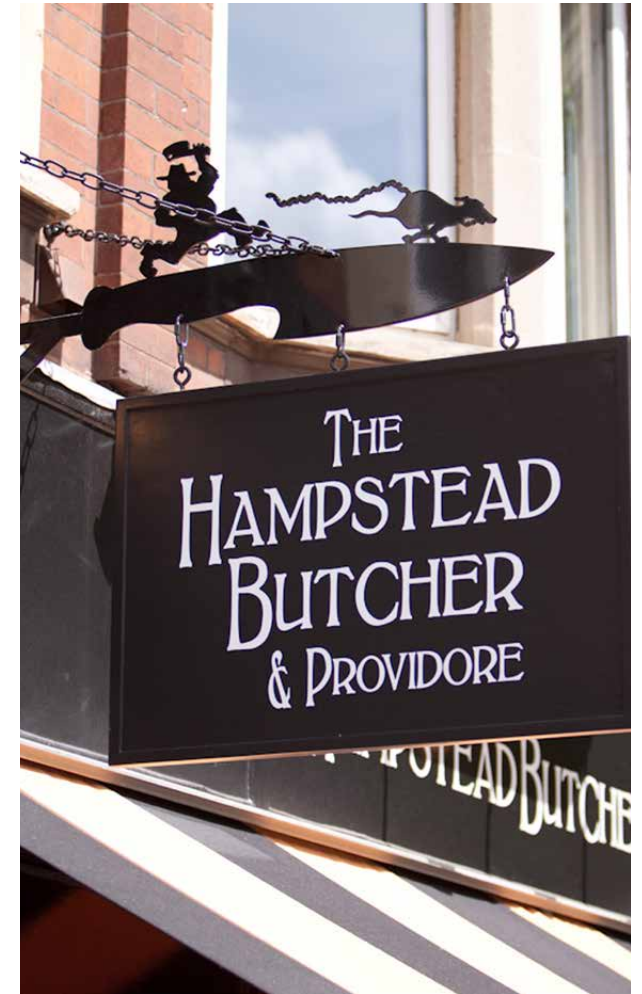
Accessed via sliding glass doors from the dining room, a peaceful private garden invites days outdoors in London's warmer months. Plus, Malden Road puts you within easy reach of Hampstead Heath and Primrose Hill.

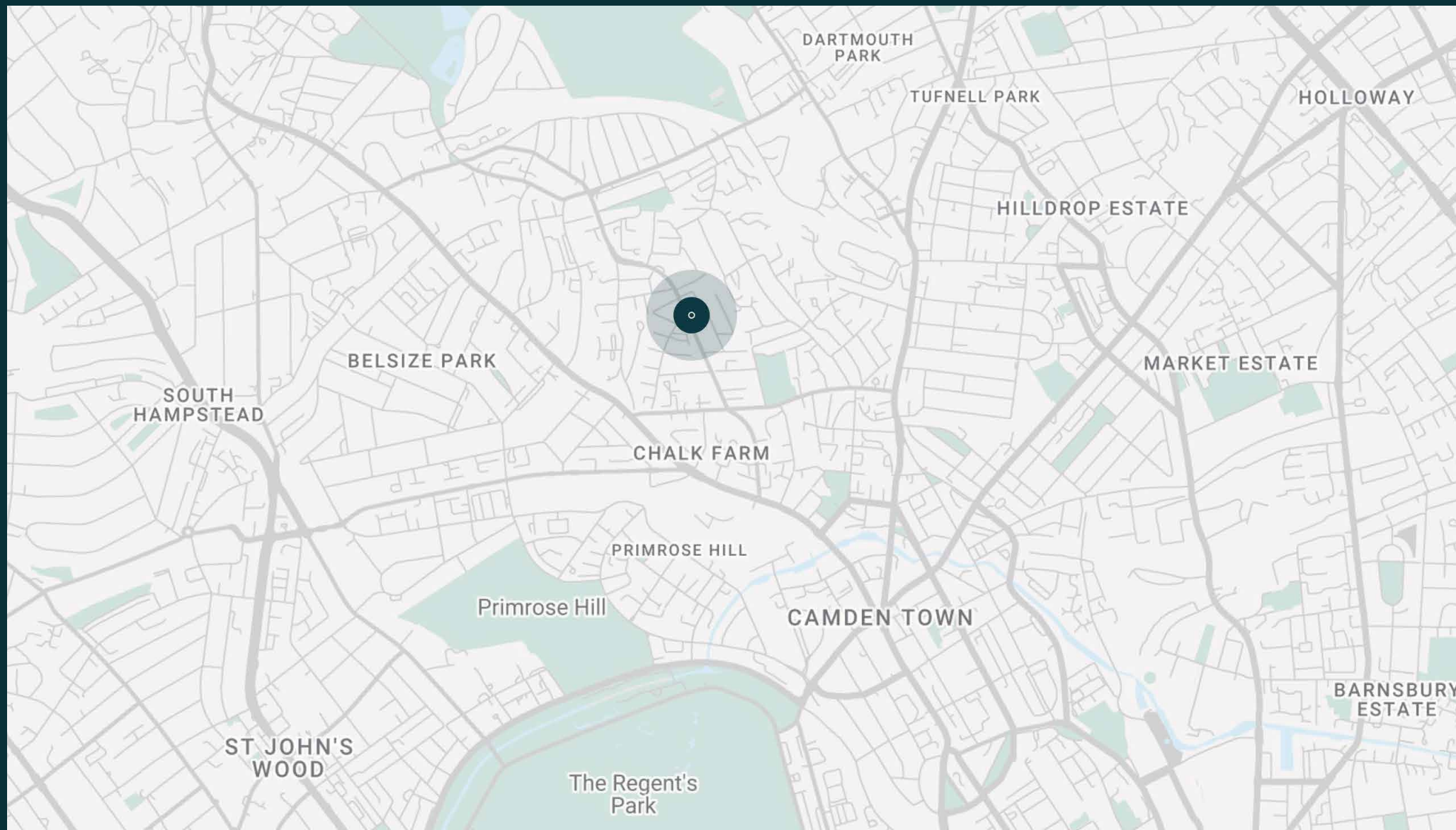


The neighbourhood

Combining urban convenience with village-like charm, this North London neighbourhood is well-loved amongst families, professionals and creatives alike.

Quiet streets lined with Victorian architecture lead to the livelier spots of Belsize Park and Kentish Town, boasting plenty of independent boutiques and local pubs. Start your day with coffee from England's Lane Cafe, before heading towards one of London's most cherished green spaces: Primrose Hill boasts its panoramic city views, while Hampstead Heath has swimming ponds and woodland to explore. First opened in the 1970s, Kentish Town City Farm is a short walk away and has plenty of activities on offer as well as organic produce. Venture into Camden for live music and market shopping, before dinner at The Parakeet or Patron.





Property features

- Open-plan kitchen, dining and living room
- Three bedrooms
- Family bathroom
- Additional WC
- Private garden
- London Borough of Camden

Approx. 69.7 sq m / 750 sq ft



Guest & concierge services

Our concierge team are here to help guests settle in, seamlessly. Centre court tickets to Wimbledon, Premier League seats with the best views, Savile Row tailors on standby, or a private chef to cater to individual tastes – we aim to elevate every stay.

From the moment of booking with us, each guest has a single point of contact to finesse the details. Our statement spaces are just the starting point – to ensure everyone feels at home, our rates include:

-
- Weekly housekeeping
 - Flexible check-in/out
 - Luxury linens and Bamford toiletries
 - Legal compliance on all our homes
 - A personal welcome and arrival essentials
 - Unlimited access to guest services and tailored experiences
 - Professional inventory inspection before and after every stay
 - Access to a curated portfolio of sole agency properties



domus stay.

Please get in touch if you have any questions
or require any further information.

hello@domusstay.com

+44 (0)20 8168 8880

The property particulars are a guide not statements. Descriptions, photographs, and plans are for guidance only. The Property is offered "subject to contract and references". No warranties, representations, License or Tenancy is given by Domus Stay. Our full disclaimer together with trading names and our Privacy Policy is shown on our website

© Domus Stay 2025. All rights reserved.

