

domus  
stay.

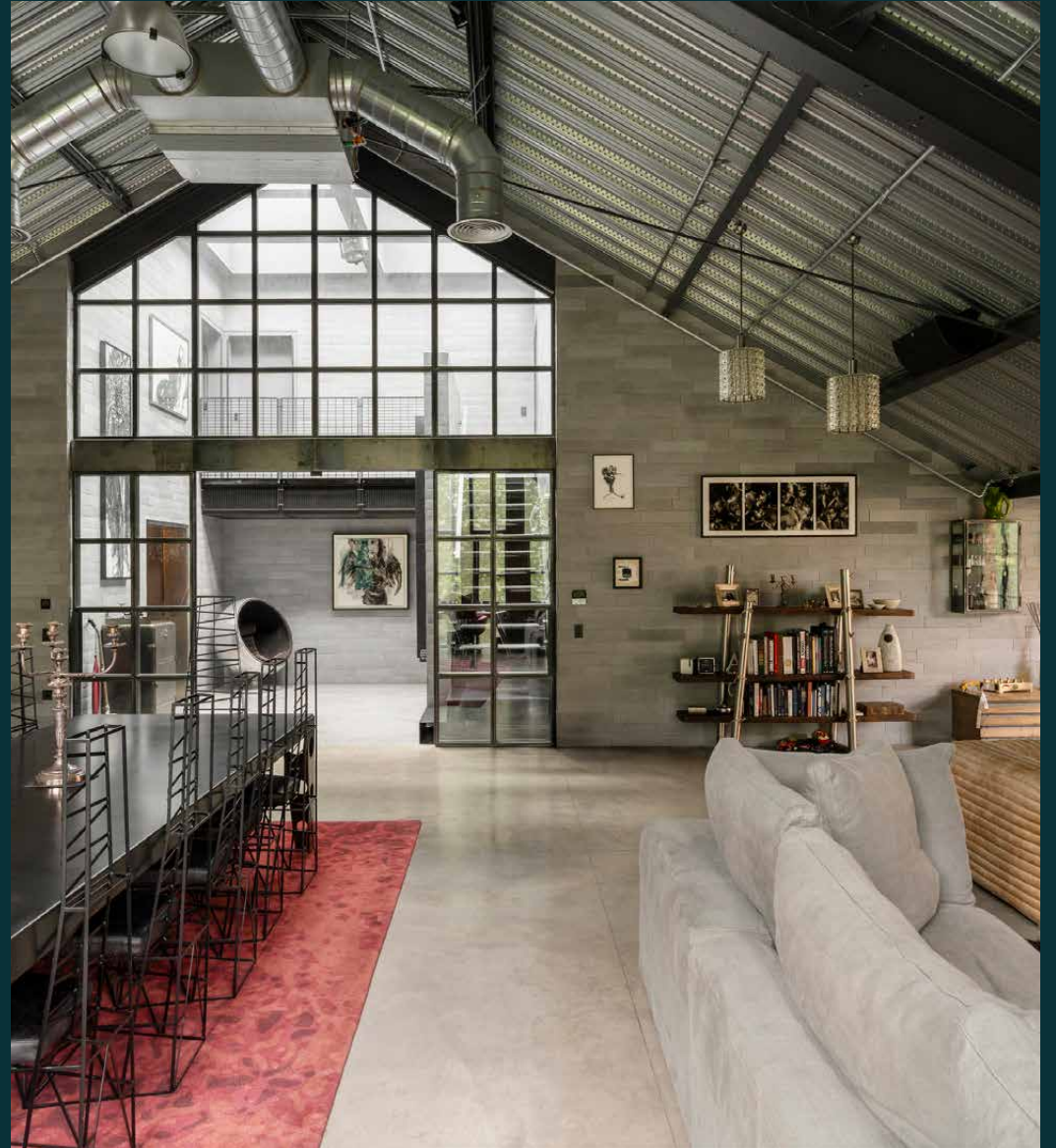
---

## Lawn Lane

THE CITY & CENTRAL

4 Bedrooms, 4 Bathrooms  
For 8 guests

---





Cathedral-like in volume,  
industrial in spirit – this four-  
bedroom penthouse to rent  
redefines loft living.

Set high above the gardens of Vauxhall Park, this extraordinary four-bedroom penthouse plays with contrast. Designed by architects Foster Lomas, the home spans nearly 3,700 sq ft across two levels, with three terraces, dramatic double-height spaces and a concierge. Part gothic, part industrial, wholly bespoke – this is a home defined by scale and precision.







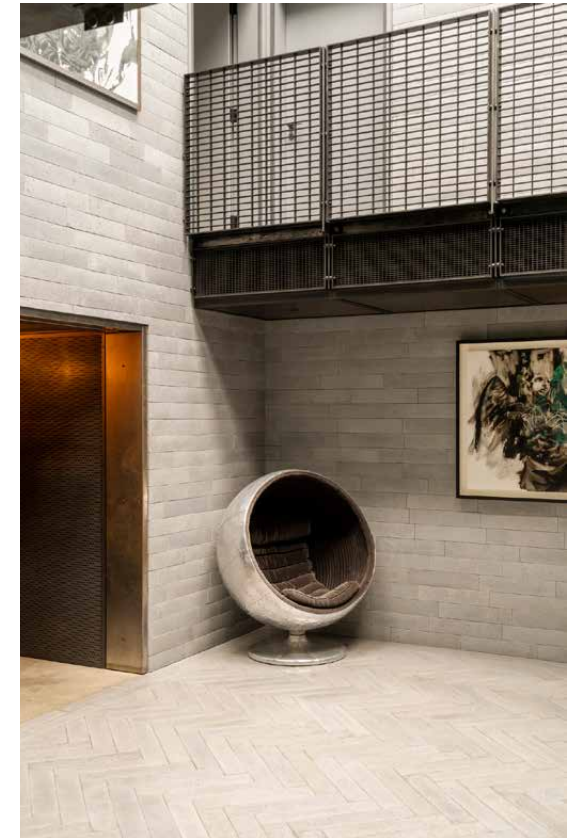




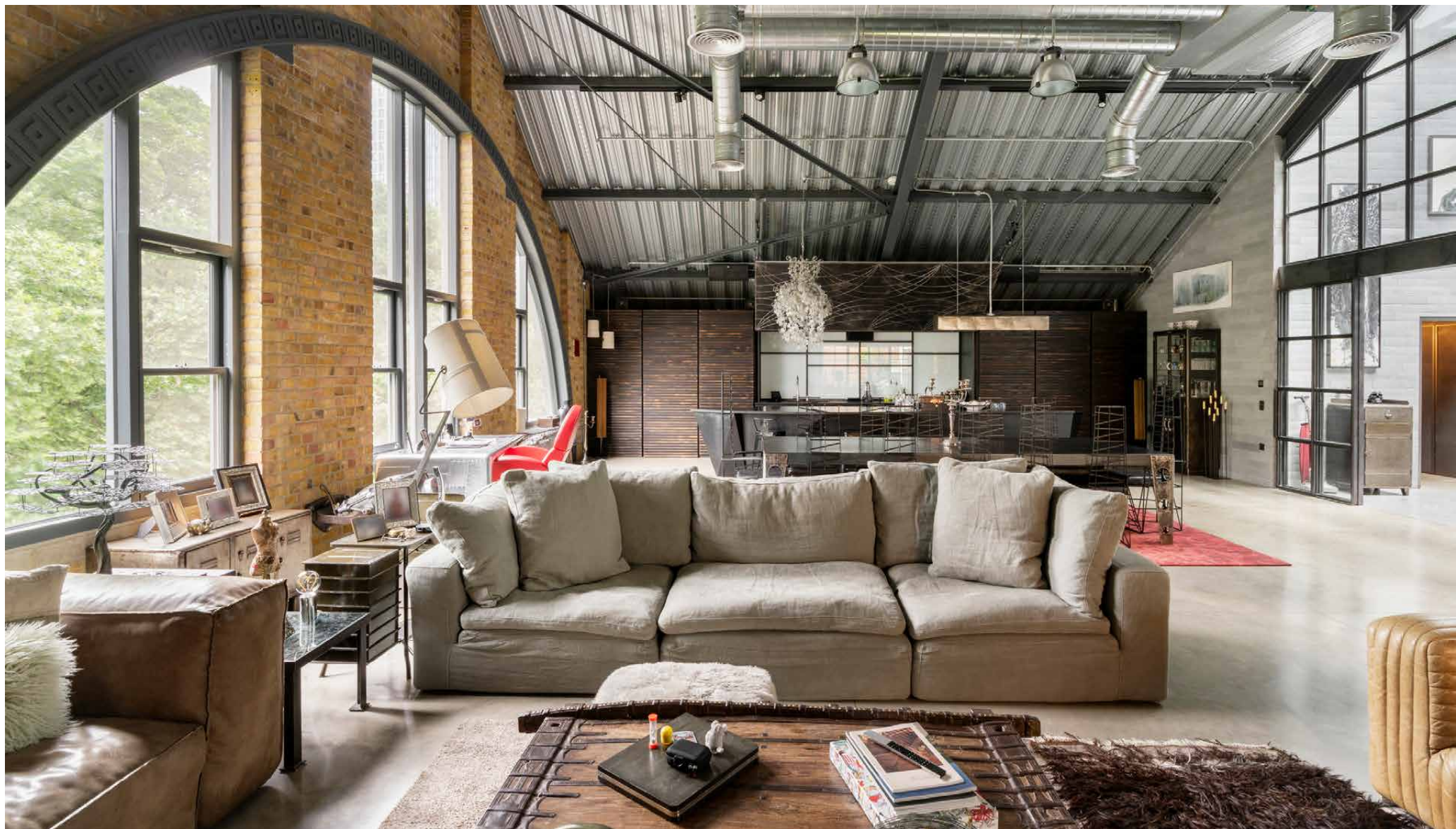
# The living spaces

Accessed via coded lift or a private staircase from the concierge lobby, the journey into the apartment sets the tone. A long entrance corridor unfolds into a soaring double-height atrium, where towering walls clad in concrete tiles develop a sense of drama. There's a seamless flow through to the reception space beyond: a setting to rival any gallery in scale.

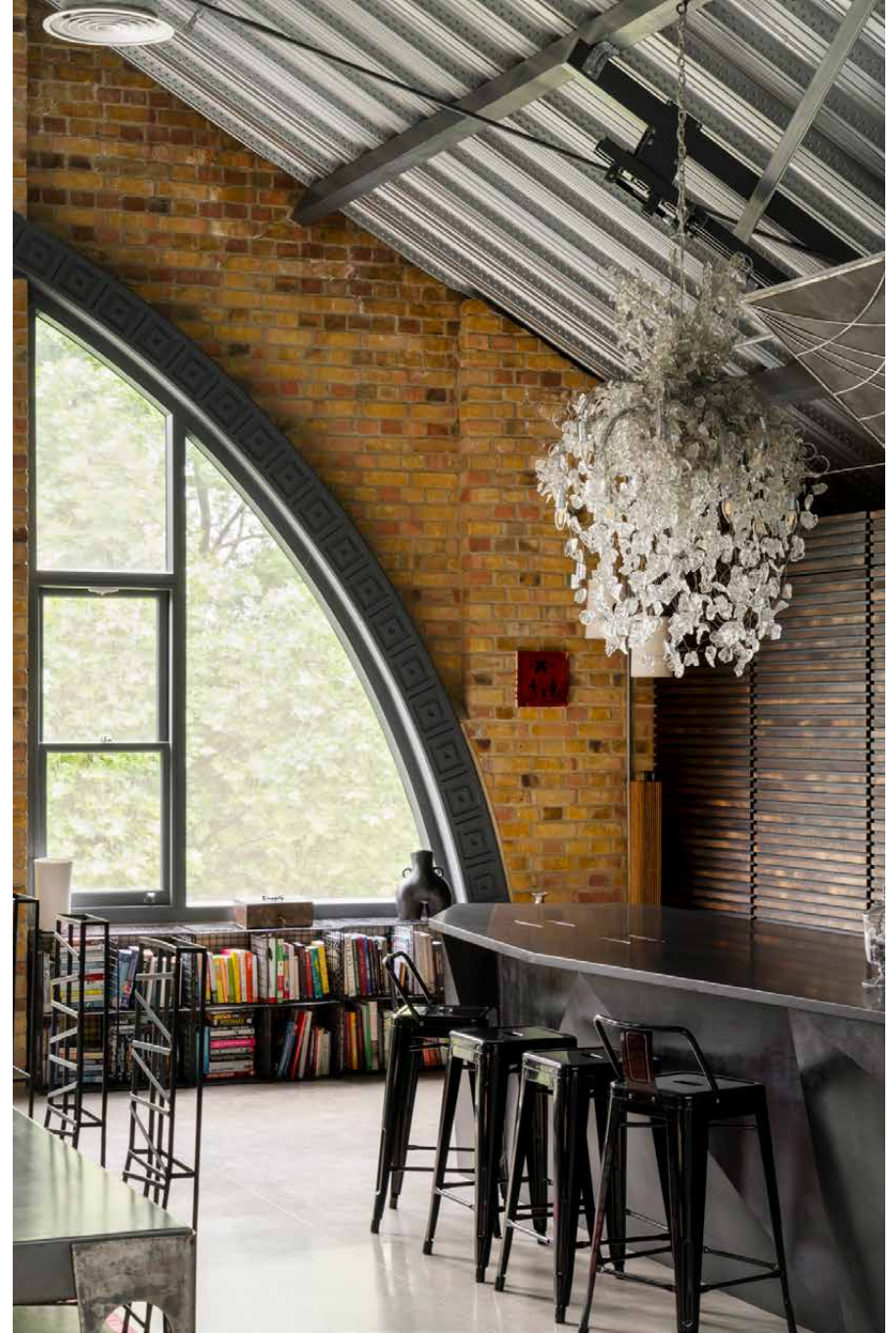
Vaulted ceilings stretch up to 20 feet high, crowned by full-height Crittall glazing that arcs across the rear façade. Framed views are matched by an interior anchored in precision – polished concrete floors, underfoot heating and Lutron lighting systems accentuate the attention to detail. Backdropping the lounge, Crittall-style glazing leads to a private terrace.















The centrepiece of the space is a striking kitchen – a feat of bespoke design. Conceived by the owner and collaboratively created alongside furniture maker Andrea Felice, it's a setting to impress as host or embark on culinary adventures. Perch at the 18-foot island topped in black granite; above, a cascade of crystal shards forms a chandelier. There's also a counterweighted steel screen overhead – engineered to slide into place and conceal the workspace during gatherings. Hidden doorways lead to a full pantry and secondary kitchen beyond.

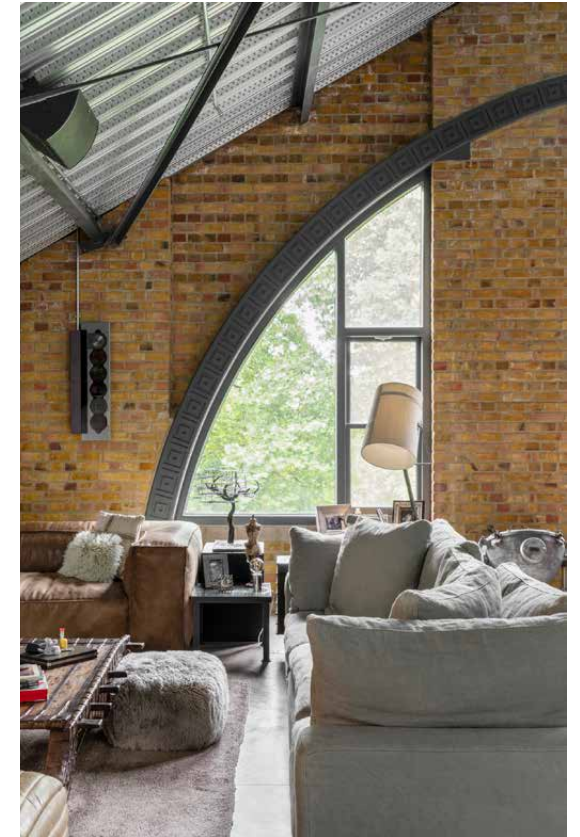




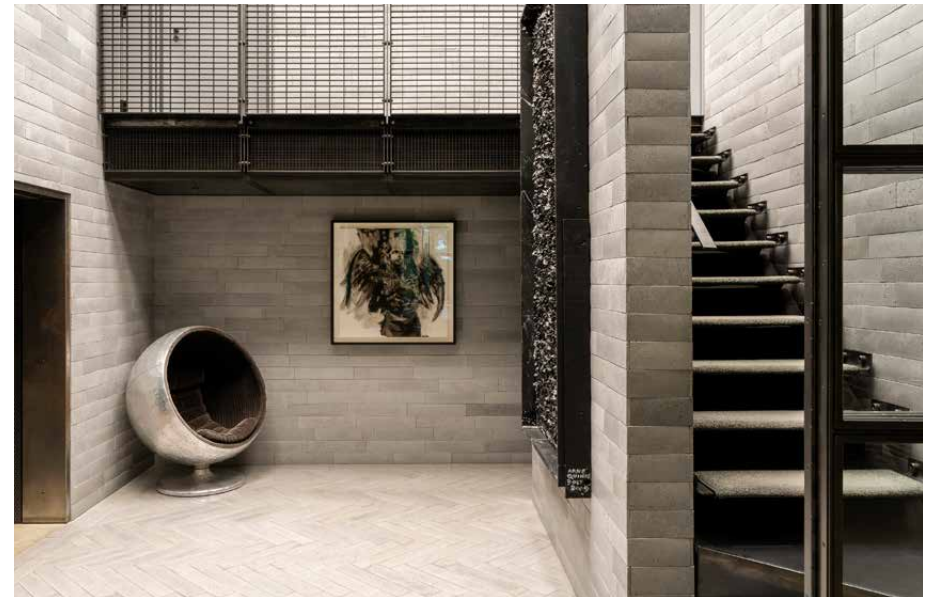
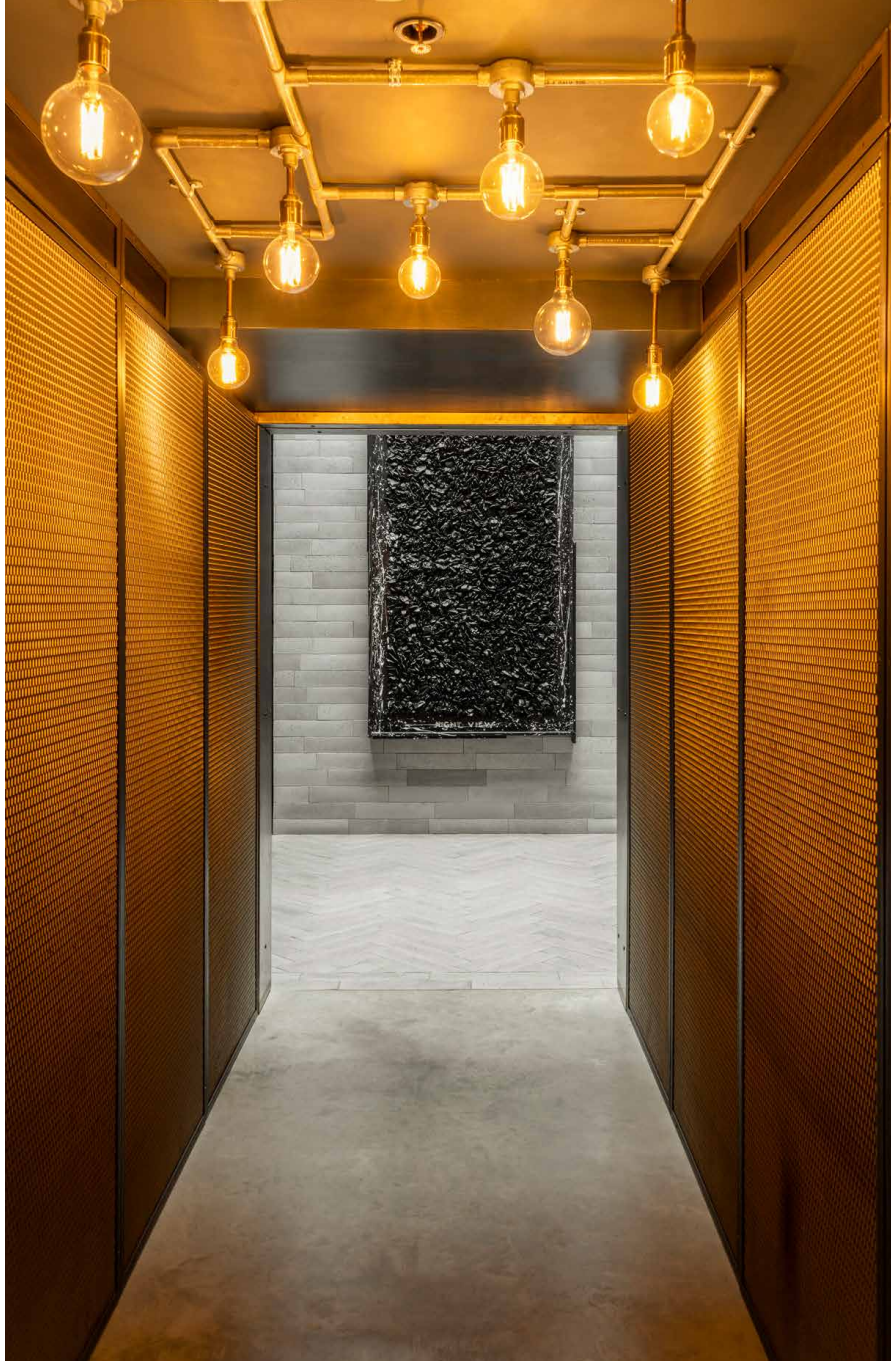


# The design

Conceived by architects Foster Lomas, this dramatically designed penthouse is all tactile materials and showstopping spaces. A vaulted reception room steals the spotlight – spanning nearly 2,000 sq ft, with soaring 20-ft ceilings, full-height Crittall glazing and park views framed like landscape paintings across the southern façade.









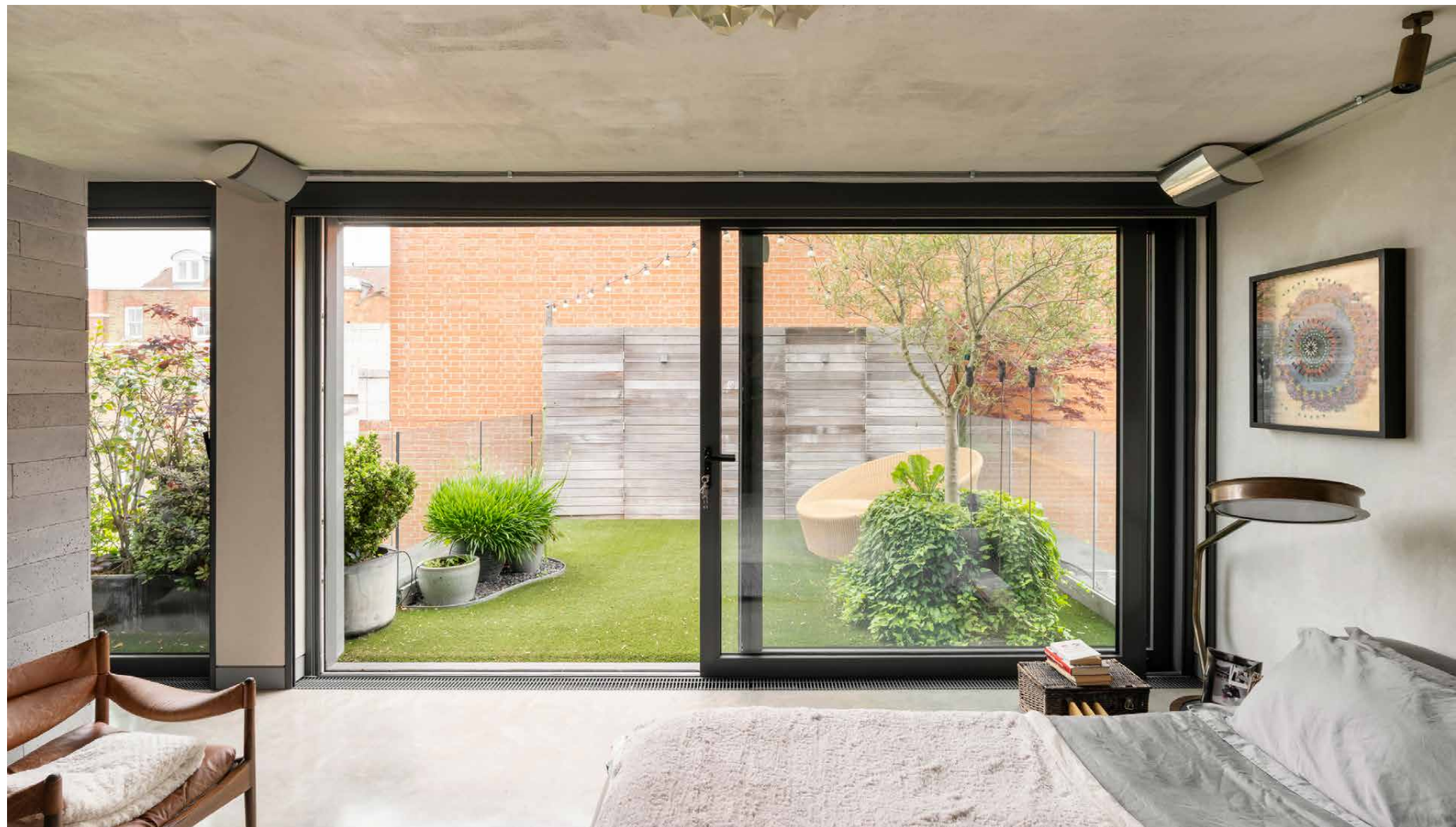
# Bedrooms & bathrooms

Upstairs, the principal suite merges its minimalist form with curated artwork and accents. A semi-open en suite is arranged around a handmade teak bath – handcrafted in Estonia – with an Italian-tiled walk-in shower and double vanity. From both the bedroom and bathroom, enjoy open views out to a private terrace.

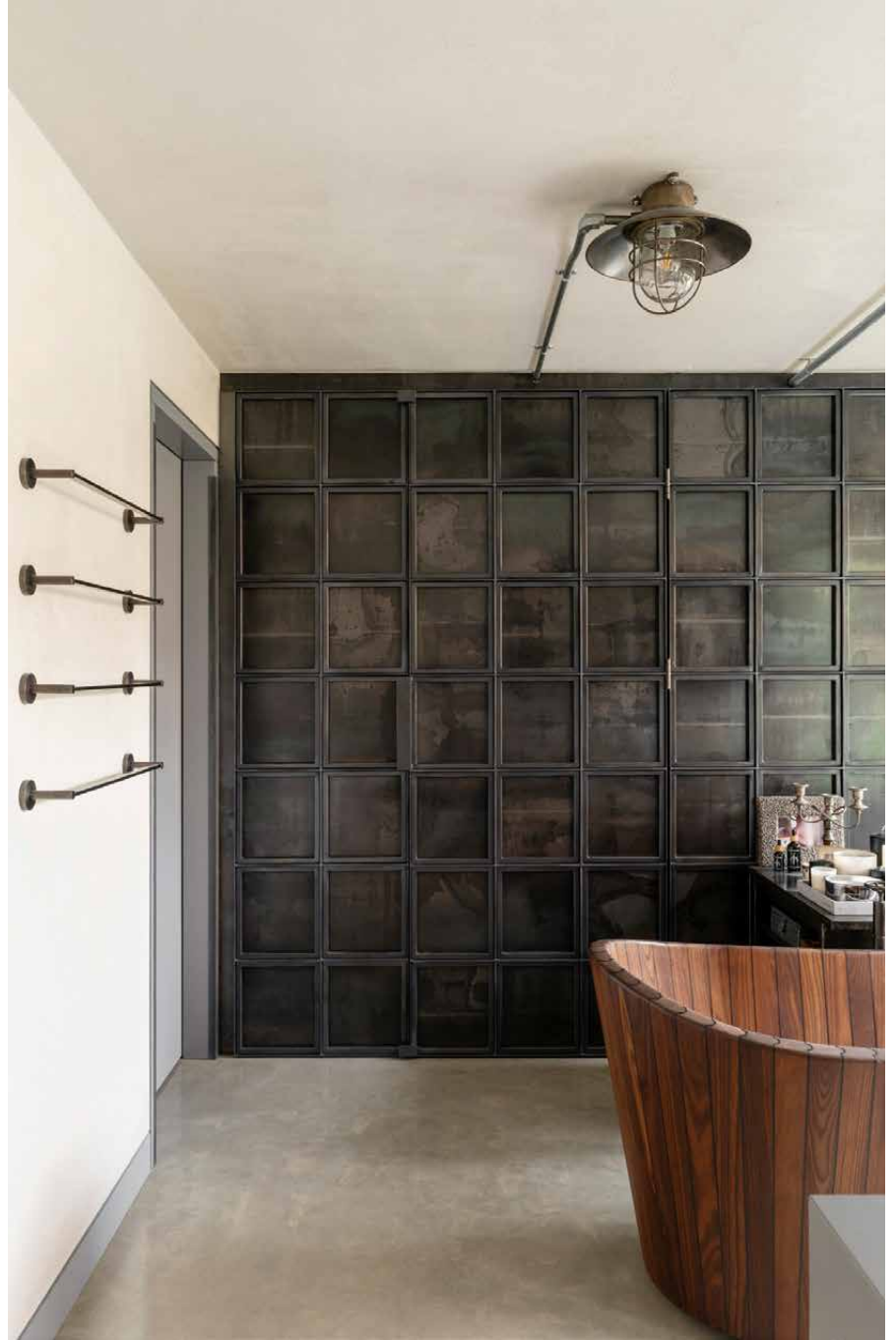
Two further bedrooms are found opposite, each with access to outdoor terraces via sliding glass doors. A second en suite and an additional shower room serve these bedrooms with equal attention to detail. A fourth and final bedroom is located on the level below – all exposed plaster finishes and served by a considered en suite.







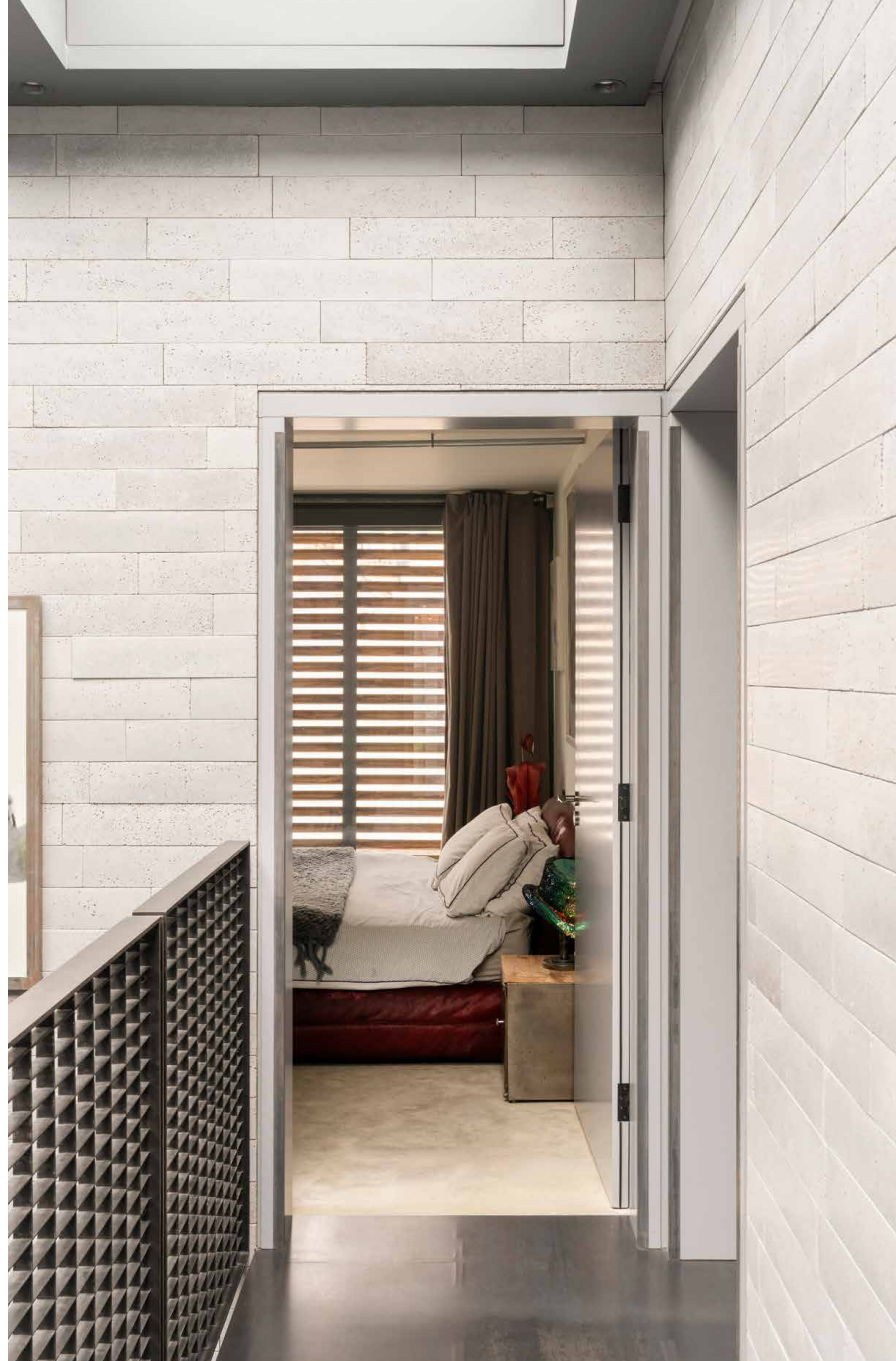




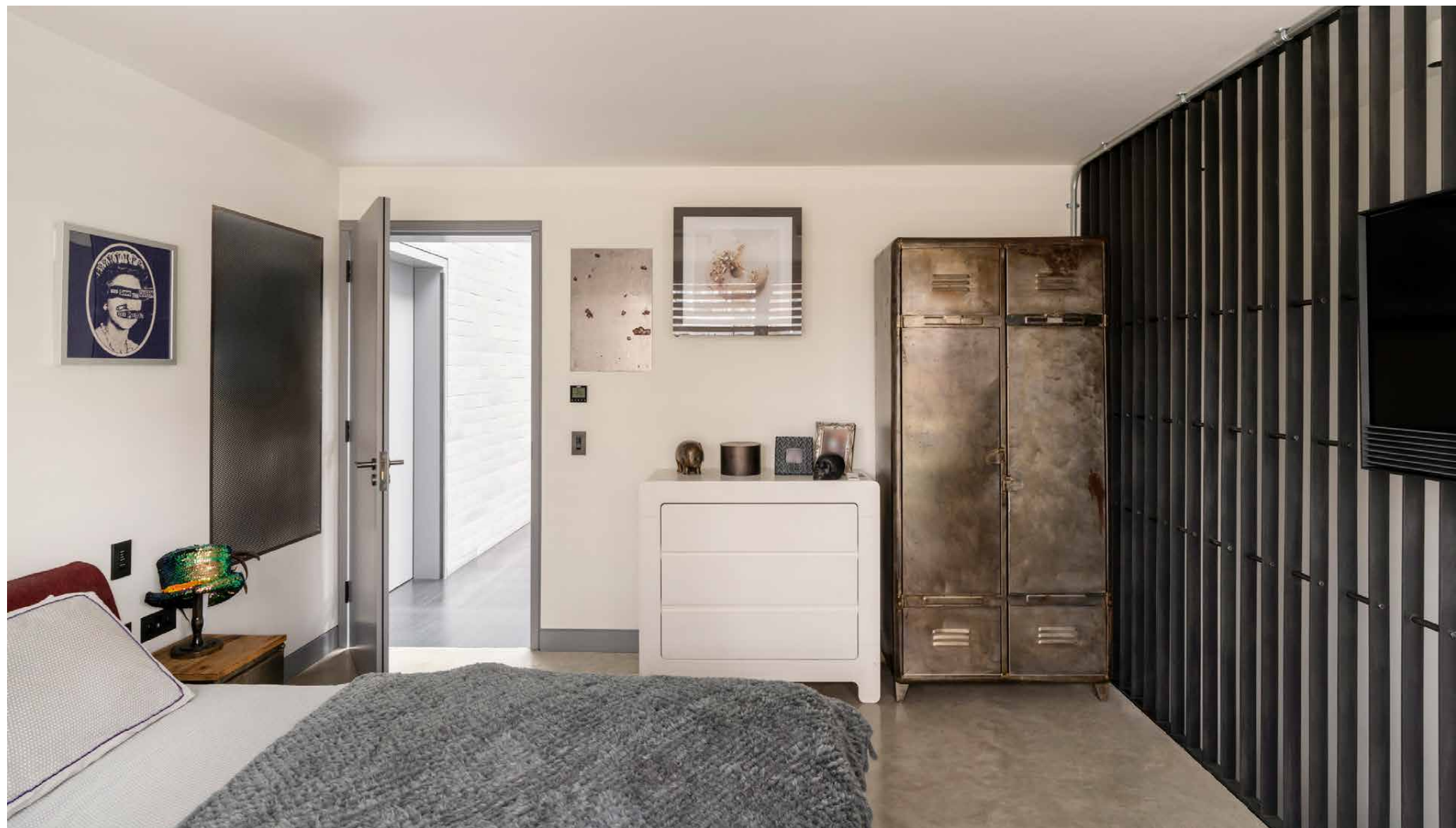




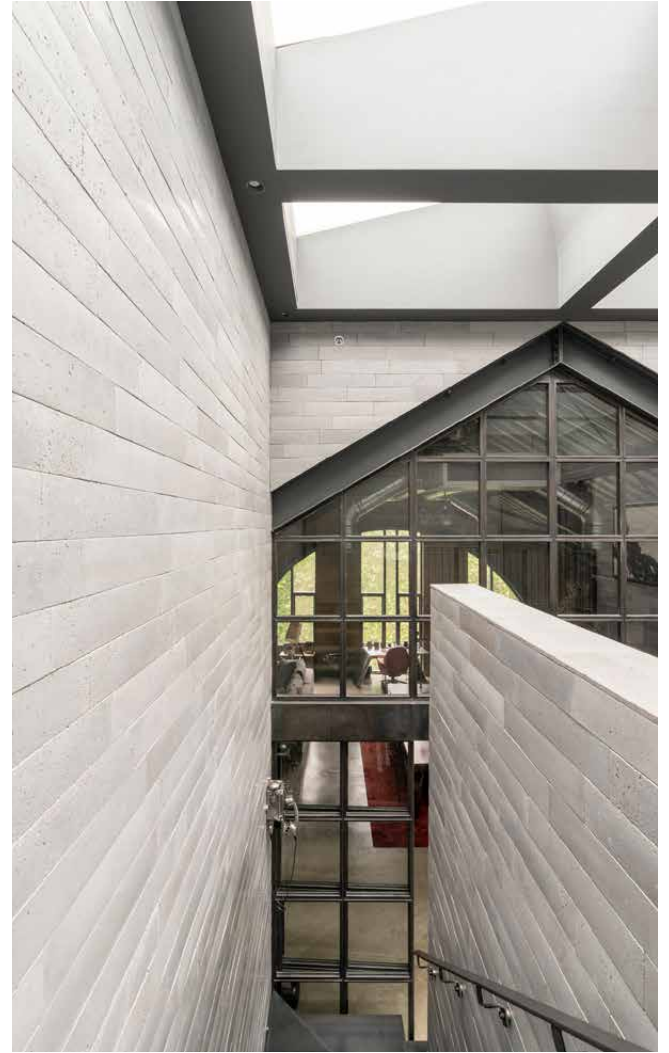




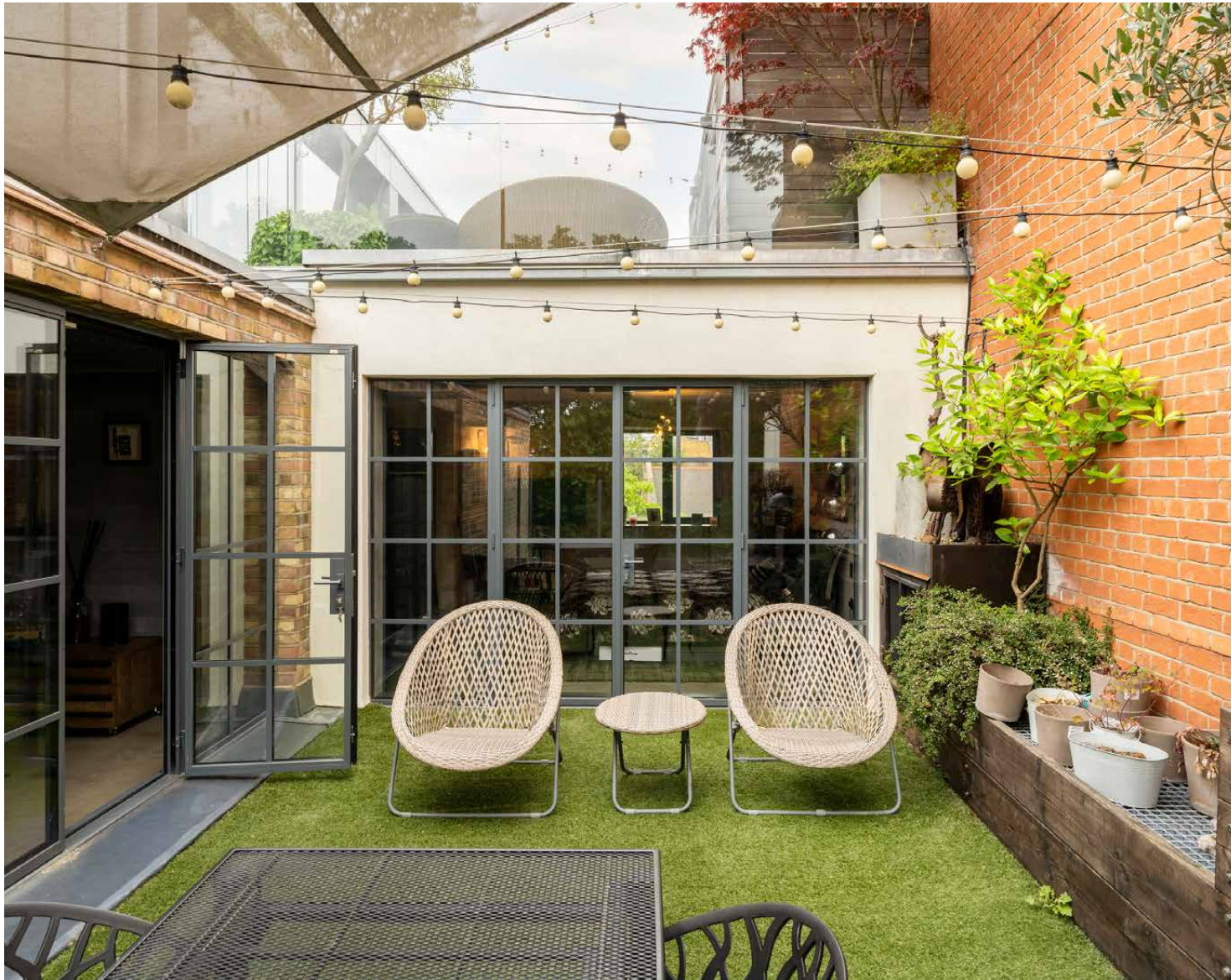








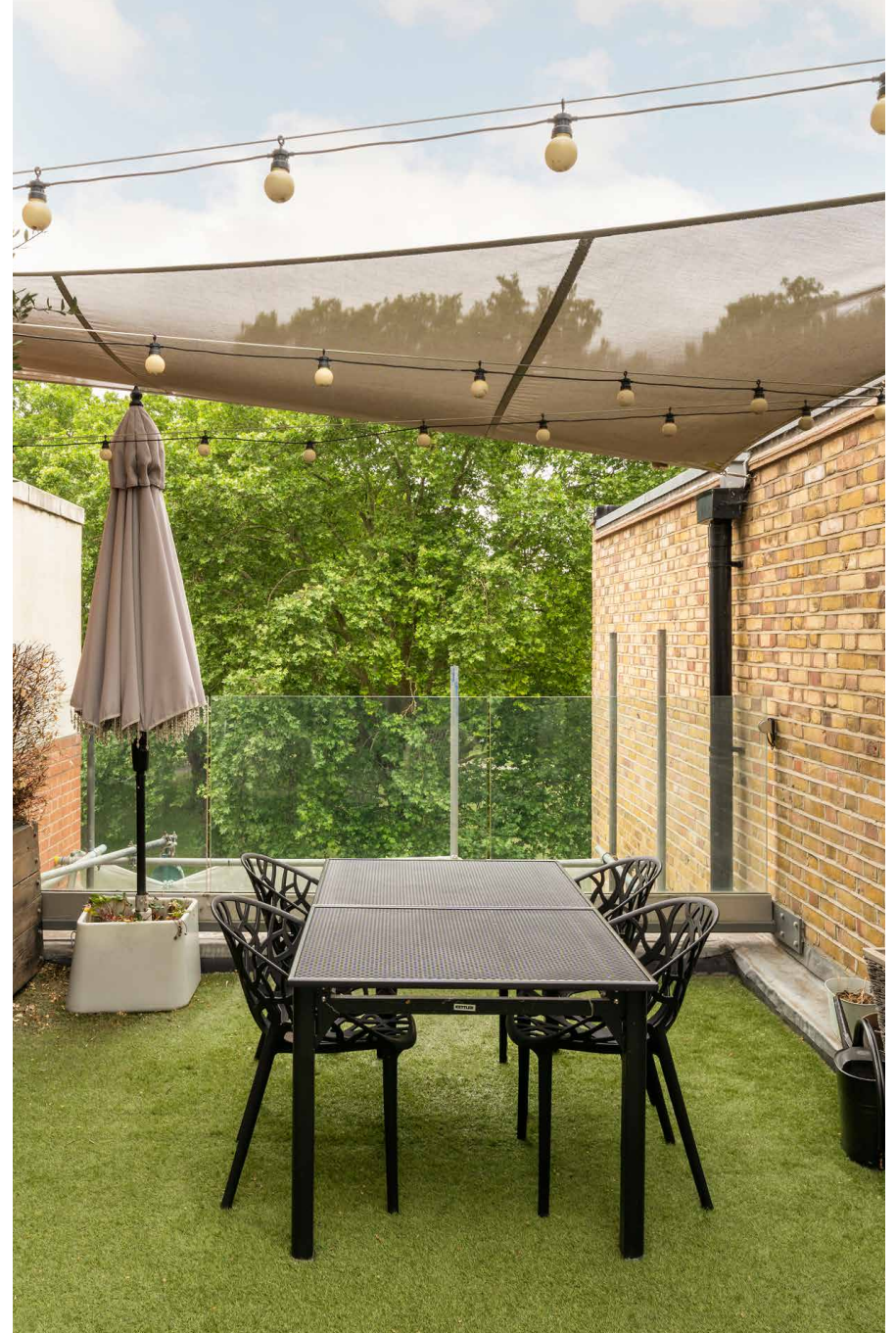




## Outdoor spaces

Three terraces encircle the penthouse, offering multiple aspects and views – from quiet moments overlooking the park below to far-reaching cityscapes above the conservation area.



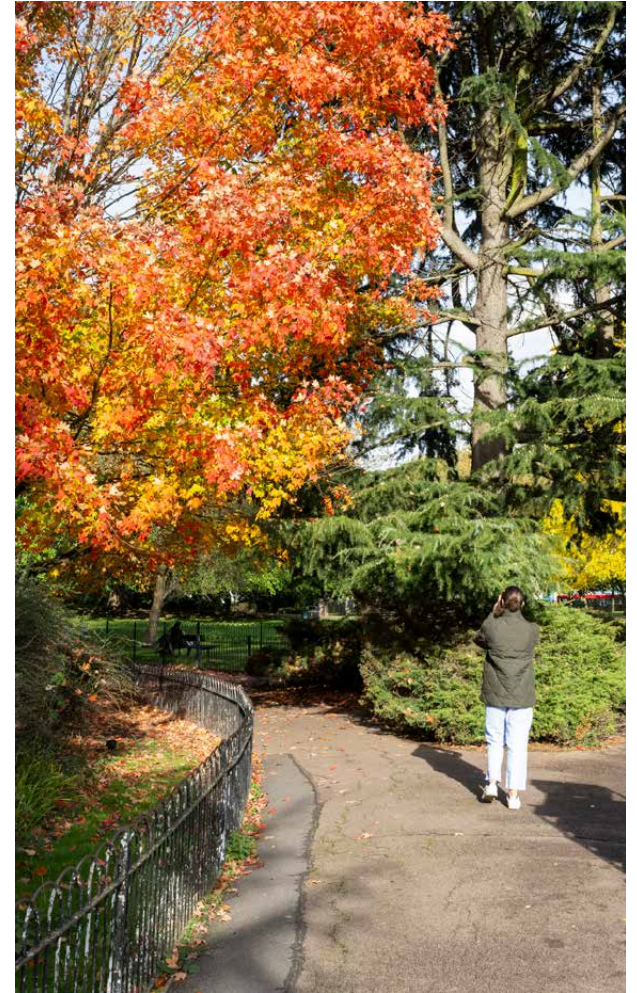




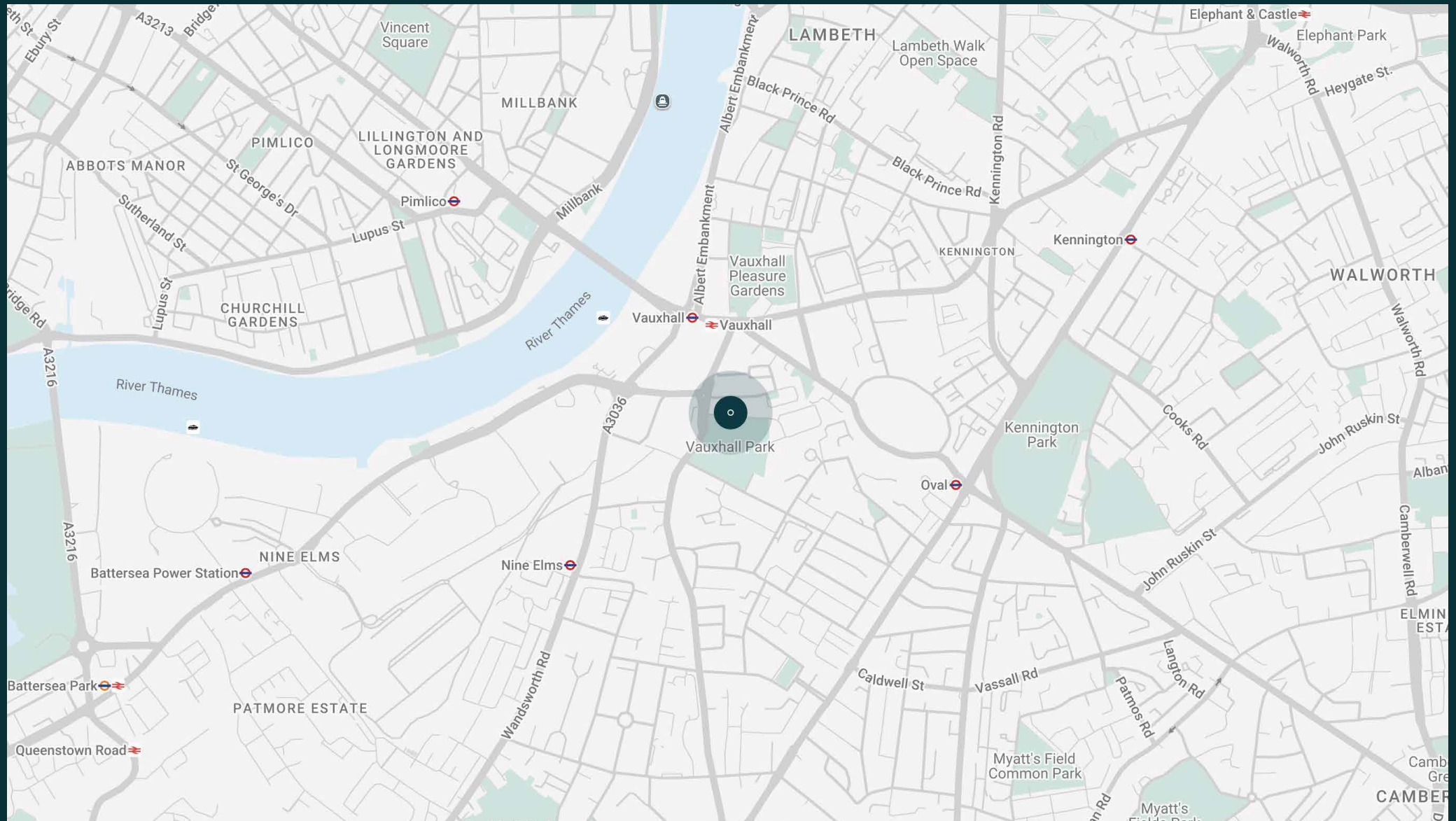
# The neighbourhood

Just moments away from the River Thames, this apartment is a springboard to Battersea and beyond – enjoy access to rail and riverboat links across London.

Start the day with a stroll around Vauxhall Park before heading to local favourite Italian delicatessen Italo. Come evening, head to Brunswick House or Battersea Power Station for retail therapy and endless dining options.





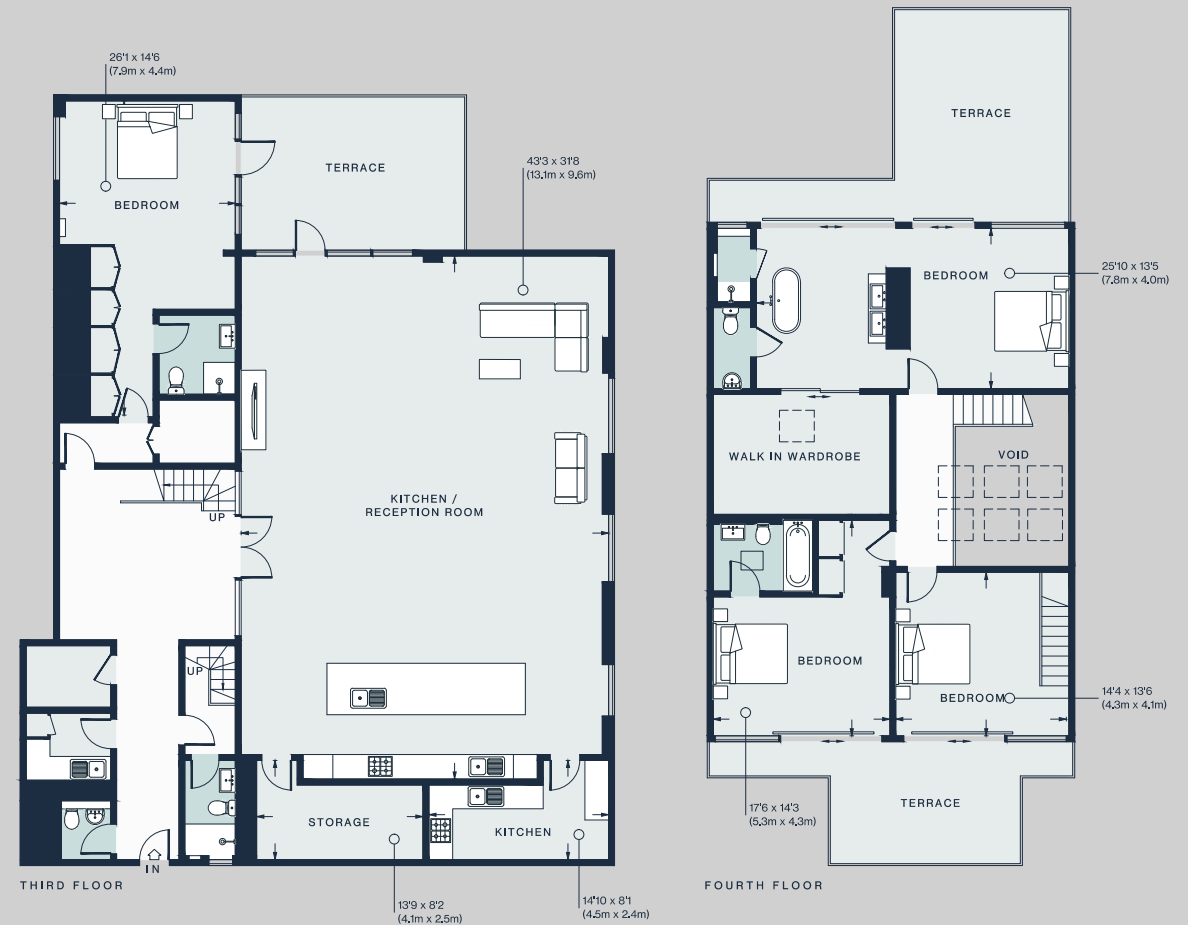




# Property features

- Designed by architects Foster Lomas
- 2,000 sq ft open-plan kitchen and reception room
- Bespoke concealed kitchen and storage space
- Principal bedroom suite with walk-in wardrobe
- Two guest bedroom suites
- One further bedroom
- Shower room
- Cloakroom
- Three terraces
- Utility room
- Lift access
- Weekday concierge
- Two secure parking spaces

Approx. 3,628.5 sq ft / 337 sq m



Approx. Gross Internal Area = 3,628.5 sq ft / 337.1 sq m  
(Excluding Void )

Floor plans are for illustrative purposes only and not to scale. Compliant with RICS code of measuring practice.  
Prepared for Domus Stay. Copyright © All Rights Reserved.



# Guest & concierge services

Our concierge team are here to help guests settle in, seamlessly. Centre court tickets to Wimbledon, Premier League seats with the best views, Savile Row tailors on standby, or a private chef to cater to individual tastes – we aim to elevate every stay.

From the moment of booking with us, each guest has a single point of contact to finesse the details. Our statement spaces are just the starting point – to ensure everyone feels at home, our rates include:

- 
- Weekly housekeeping
  - Flexible check-in/out
  - Luxury linens and Bamford toiletries
  - Legal compliance on all our homes
  - A personal welcome and arrival essentials
  - Unlimited access to guest services and tailored experiences
  - Professional inventory inspection before and after every stay
  - Access to a curated portfolio of sole agency properties







Please get in touch if you have any questions  
or require any further information.

[hello@domusstay.com](mailto:hello@domusstay.com)

+44 (0)20 8168 8880

The property particulars are a guide not statements. Descriptions, photographs, and plans are for guidance only. The Property is offered "subject to contract and references". No warranties, representations, License or Tenancy is given by Domus Stay. Our full disclaimer together with trading names and our Privacy Policy is shown on our website

© Domus Stay 2025. All rights reserved.

