

domus
stay.

Lancaster Road

NOTTING HILL

4 Bedrooms, 3 Bathrooms
For 8 guests





Classic architecture meets contemporary creativity and suntrap alfresco spaces in this four-bedroom family home in Notting Hill.

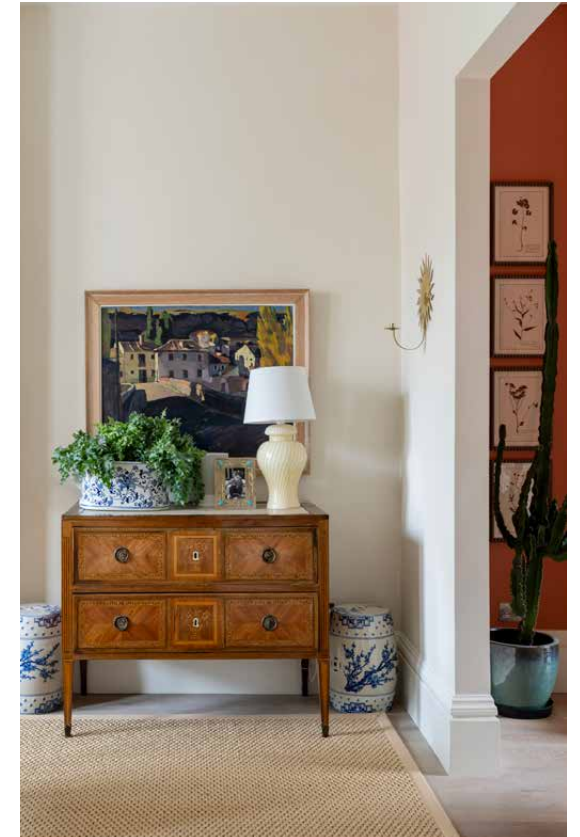
Behind its handsome period façade, this four-bedroom Notting Hill townhouse unfolds through a series of characterful, thoughtfully designed spaces. Original architectural features are paired with contemporary interventions that bring warmth, tactility and abundant natural light. Inviting social spaces set the scene for slow mornings and family gatherings, while a lush garden and rooftop terrace blur the boundary between indoors and out.



The living spaces

The home opens into a spacious double reception room, illuminated by large bay windows that cast sunlight across pale walls, timber floors and soaring ceilings. A carved marble fireplace anchors the space, complemented by a curated mix of mid-century and antique furnishings. Beyond a wide archway, a more intimate television room is wrapped in earthy terracotta tones.

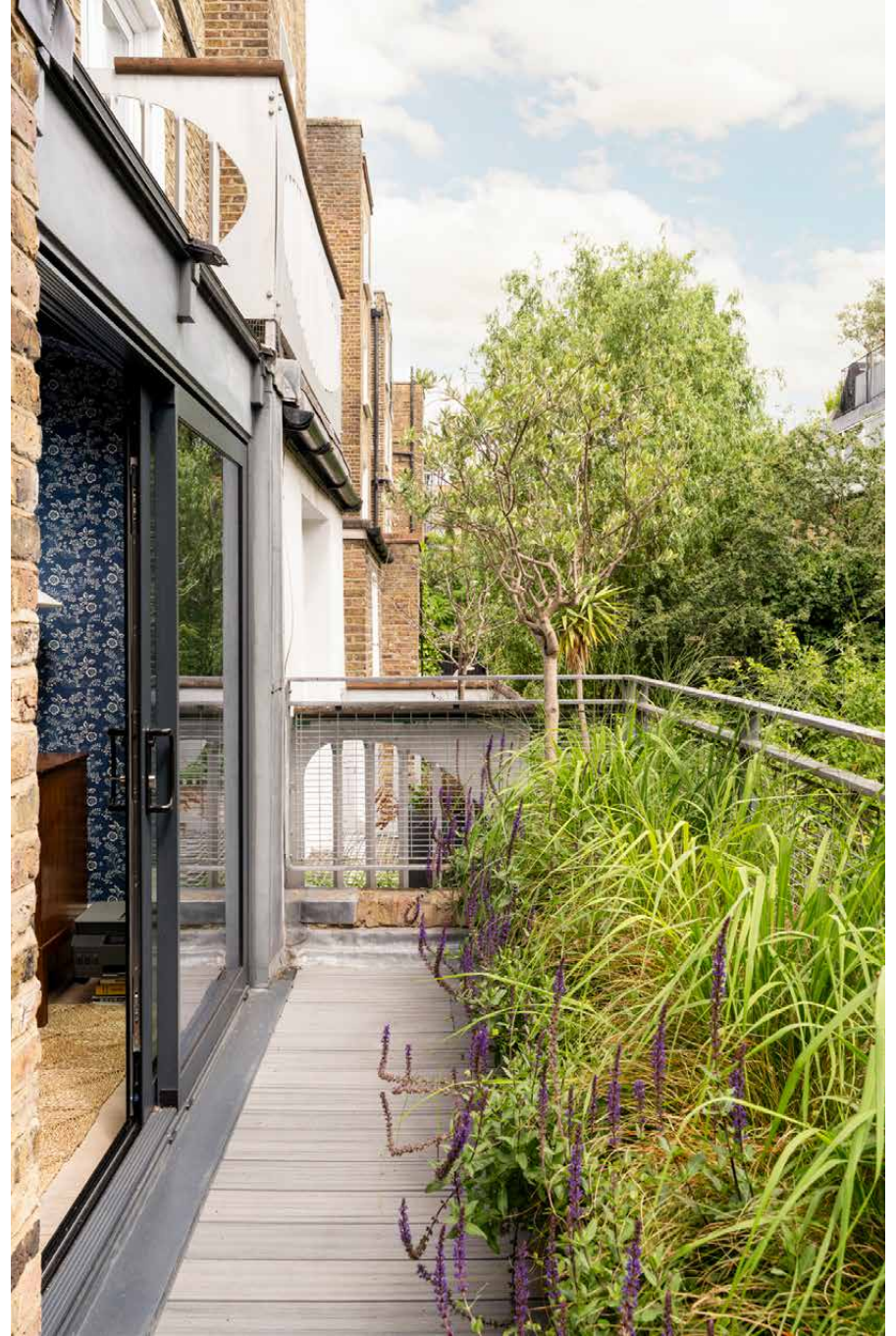
To the rear, a conservatory study – wrapped in charming botanical wallpaper – draws daylight through glazed doors and overhead rooflights. There's direct access to a balcony, with a punchy staircase that leads down to the garden below.





Jenny Sav...







Kitchen & dining

An architectural cantilevered staircase leads down to the social heart of the home: a sweeping open-plan kitchen, dining and living space that's tailor-made for togetherness. At its centre, a substantial island forms a focal point, flanked by streamlined whitewashed cabinetry. A breakfast table occupies the bay window, while a circular timber dining table offers an elegant setting for larger gatherings. Beyond two structural columns, a living area opens towards the garden. Full-height glazed doors slide away to create a seamless connection with the outdoors.









Outdoor spaces

Past the wall-to-wall glass doors, a lush landscaped garden provides a tranquil retreat during the warmer months – complete with a wood picnic table set on the patio. Crowning the house, there's a second alfresco setting in the form of a large roof terrace. A glass-roofed stairwell seamlessly opens out to the space, with elevated views across the surrounding rooftops.



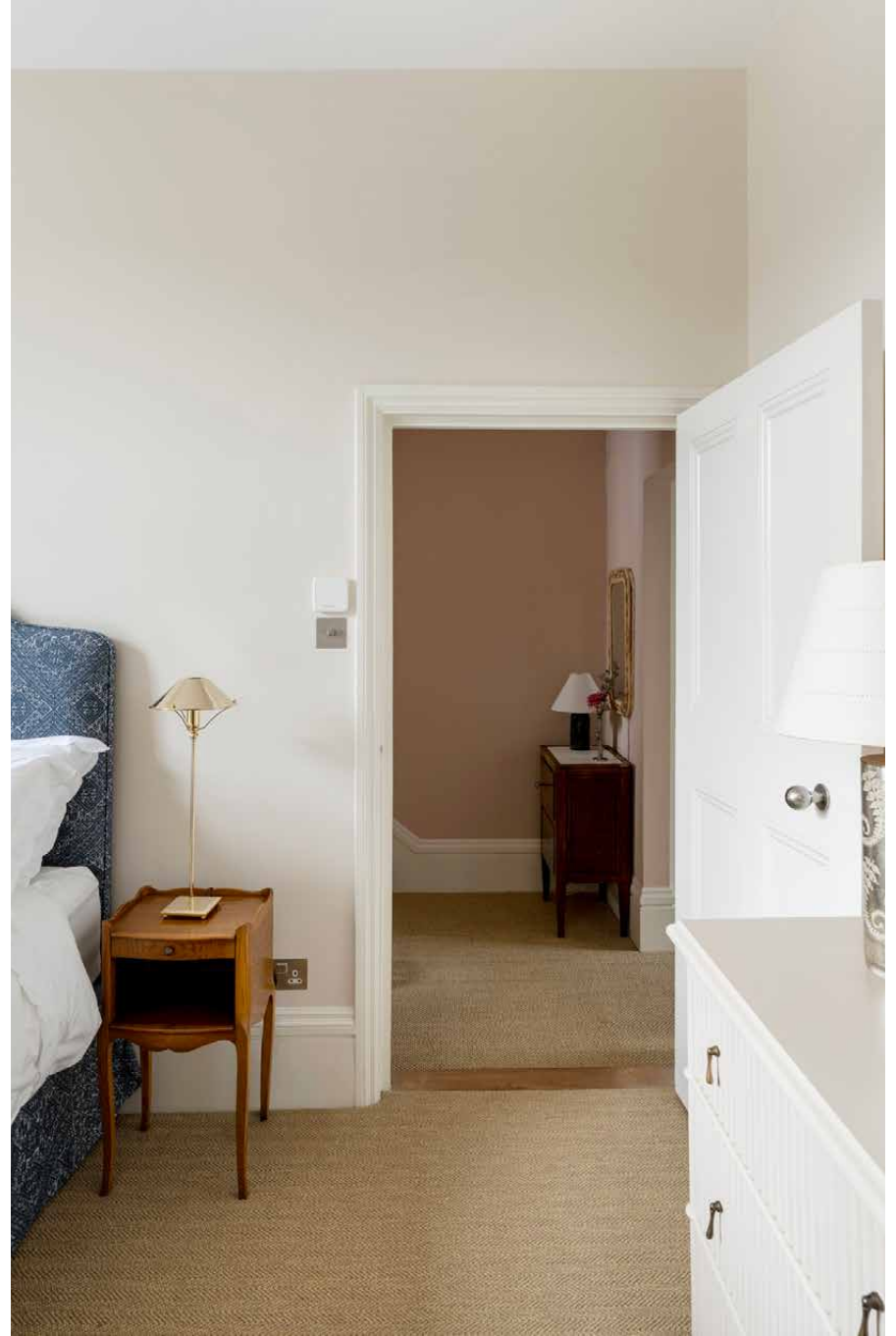
Bedrooms & bathrooms

Across the upper storeys, each bedroom has been individually considered, united by a shared attention to colour, texture and craftsmanship. Occupying the entire second floor, the principal suite is a serene and light-filled sanctuary. Twin sash windows illuminate the space, a contemporary fireplace adds a sense of warmth and extensive integrated storage keeps the room effortlessly ordered. A short flight of stairs leads to the en suite bathroom, where rooflights brighten natural stone finishes, a freestanding bathtub and a walk-in rainfall shower.

Three further bedrooms occupy the first floor. One double bedroom features soft neutral tones and a full-height French window opening onto a Juliet balcony. Another is characterised by patterned wallpaper, textured carpeting and painted blue window frames. The third, currently arranged as a nursery, combines blue-and-white detailing with extensive fitted wardrobes. These rooms are served by two family bathrooms, one of which incorporates a wood-clad sauna.









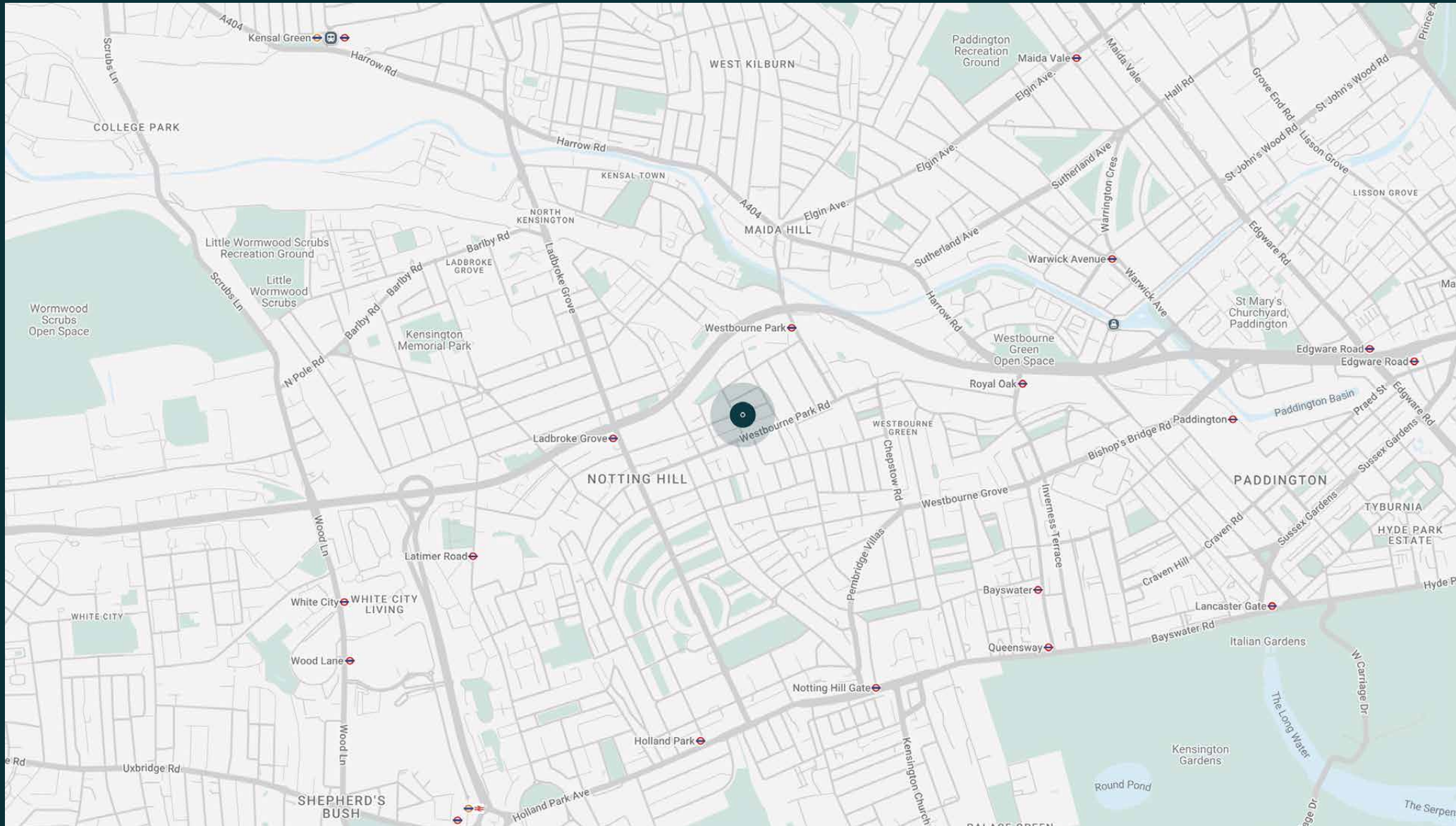




The neighbourhood

One of Notting Hill's most coveted streets, Lancaster Road places the neighbourhood's most celebrated addresses within easy reach. Start the day with pastries from Lisboa or Layla's Bakery before exploring the independent cafés, galleries and boutiques of Golborne Road. Nearby Portobello Road Market offers everything from acclaimed street food to antiques and vintage finds, while evenings are catered for by some of West London's most sought-after dining destinations, including Dorian, The Ledbury and Caractère. For culture, the iconic Electric Cinema remains a local institution, while nearby galleries and creative spaces reinforce the area's enduring artistic spirit.

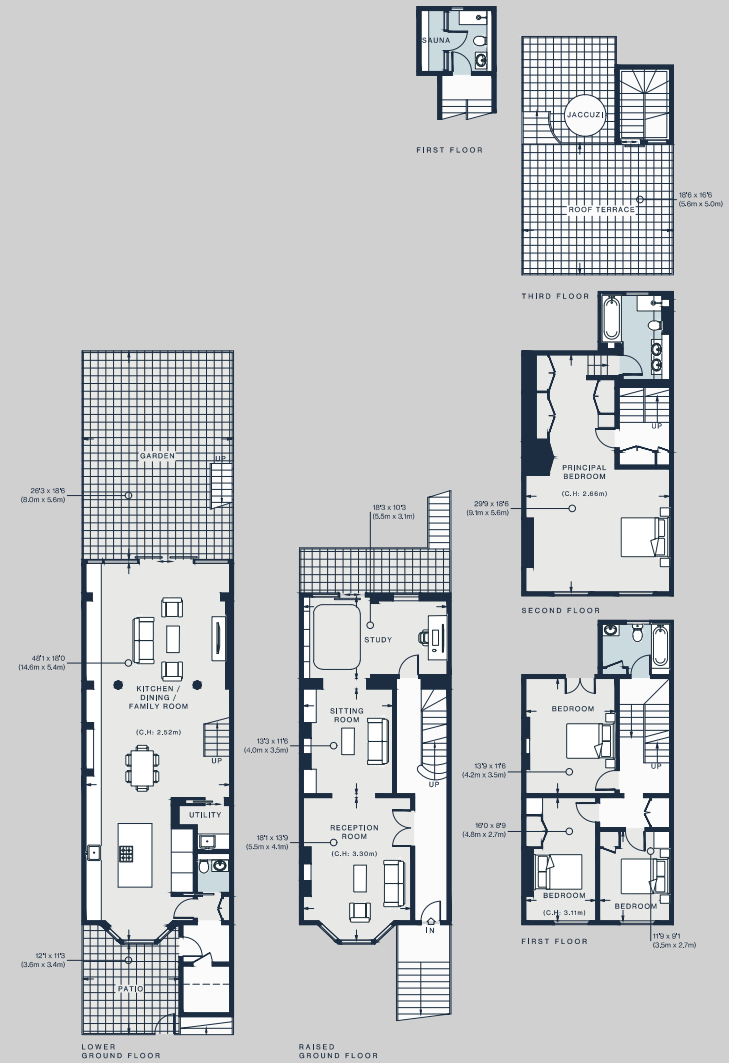




Property features

- Open-plan kitchen, dining and living room
- Double reception room
- Study and conservatory
- Principal bedroom suite
- Three additional bedrooms
- Two additional bathrooms, one with wood-clad sauna
- Additional WC
- Private garden and balcony
- Roof terrace
- Royal Borough of Kensington & Chelsea

Approx. 3,045 sq ft / 282 sq m



Approx. Gross Internal Area = 3,045 sq ft / 282.8 sq m

Floor plans are for illustrative purposes only and not to scale. Compliant with RICS code of measuring practice.

Guest & concierge services

Our concierge team are here to help guests settle in, seamlessly. Centre court tickets to Wimbledon, Premier League seats with the best views, Savile Row tailors on standby, or a private chef to cater to individual tastes – we aim to elevate every stay.

From the moment of booking with us, each guest has a single point of contact to finesse the details. Our statement spaces are just the starting point – to ensure everyone feels at home, our rates include:

- Weekly housekeeping
- Flexible check-in/out
- Luxury linens and Bamford toiletries
- Legal compliance on all our homes
- A personal welcome and arrival essentials
- Unlimited access to guest services and tailored experiences
- Professional inventory inspection before and after every stay
- Access to a curated portfolio of sole agency properties



domus stay.

Please get in touch if you have any questions
or require any further information.

hello@domusstay.com

+44 (0)20 8168 8880

The property particulars are a guide not statements. Descriptions, photographs, and plans are for guidance only. The Property is offered "subject to contract and references". No warranties, representations, License or Tenancy is given by Domus Stay. Our full disclaimer together with trading names and our Privacy Policy is shown on our website

© Domus Stay 2025. All rights reserved.

