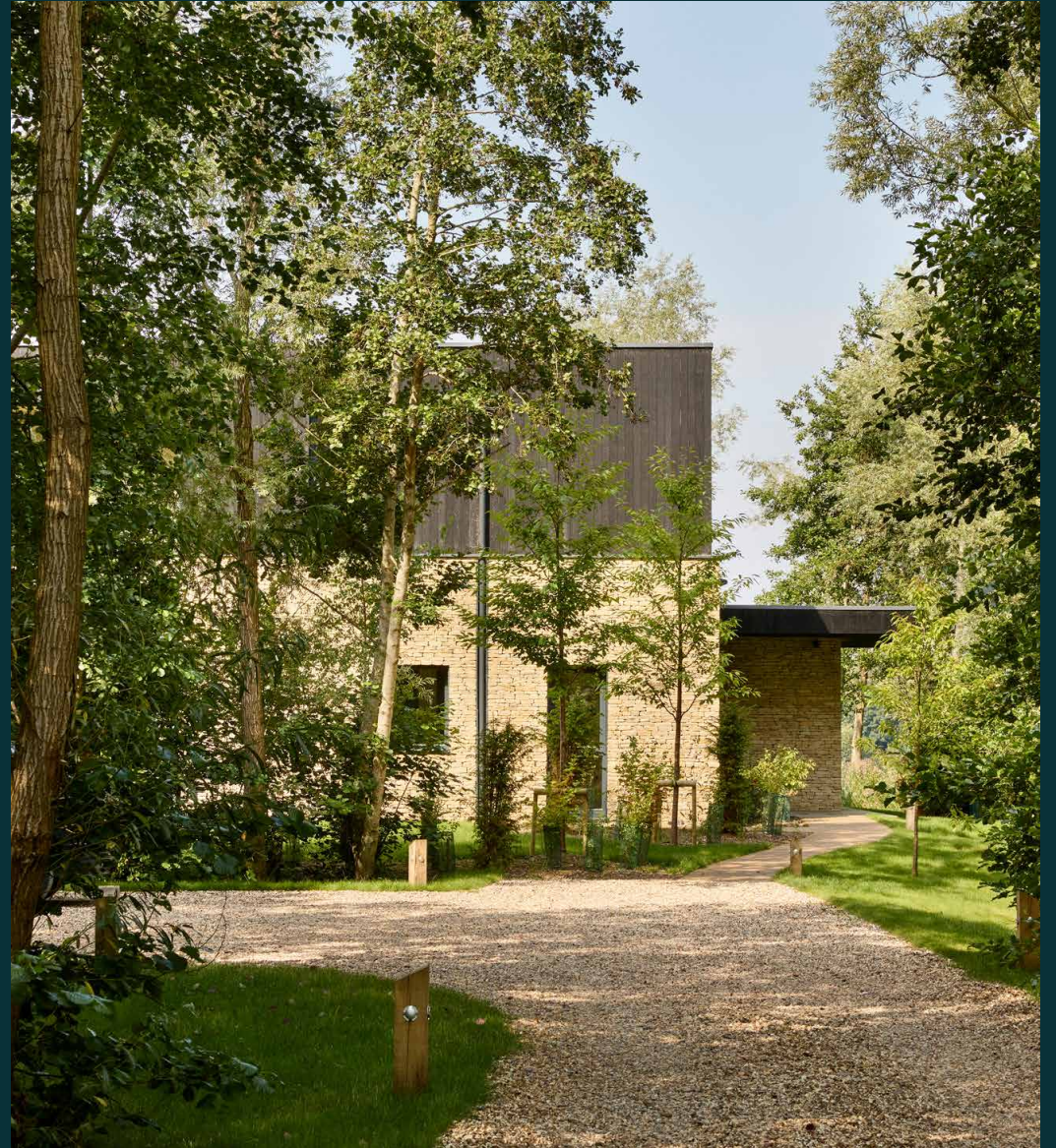


domus
stay.

Lakeside Manor

THE COTSWOLDS & COUNTRY

6 Bedrooms, 6 Bathrooms
For 14 guests





Lakeside living at its most immersive. Swallows and Amazons-like scenery surrounds this Cotswolds house for rent, wrapped within the security of a gated community.

Right by the water's edge, the pace slows at Lakeside Manor. Nature provides the backdrop: branches sway in the breeze, reeds ripple in the lake and greenery stretches for as far as the eye can see. Take it all in from the comfort of your own newly completed cabin, where cinematic views enhance the blockbuster interiors.

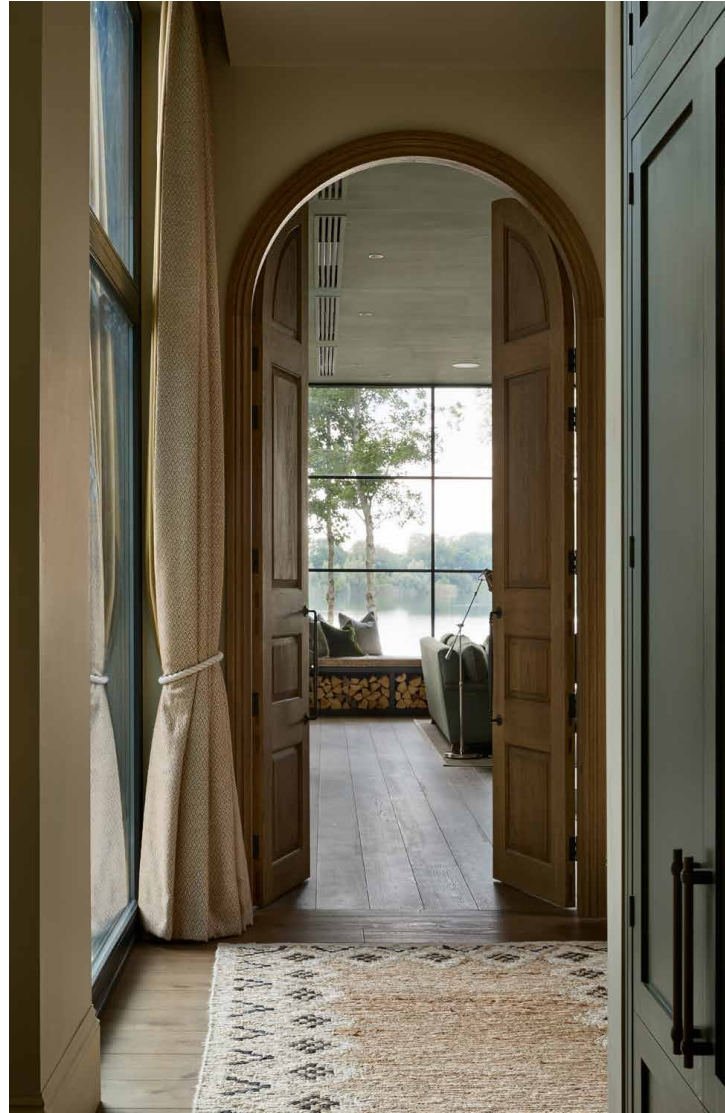
Positioned at the end of a gravel driveway screened by trees, this is somewhere to revel in privacy –with exceptional facilities at your disposal. Dotted discreetly around the 850-acre enclave on which the house sits, wellness amenities, a spa and restaurant await.

The living spaces

Nature rolls out the green carpet here – both outside and in. The lake follows you around living spaces designed for exhaling, with high ceilings, wall-to-wall windows and plenty of breathing space. An open-plan central hub is the communal anchor. Light a fire in the huge stone hearth and sink into deep sofas to admire the scenery via windows that line both sides of the room.

Other living spaces flow into one another with seamless succession. A cinema room is layered in comfort, with deep teal walls and a feature window that ensures the greenery is always in shot. A dedicated playroom is wrapped in glass, creating a calming setting for playtime.

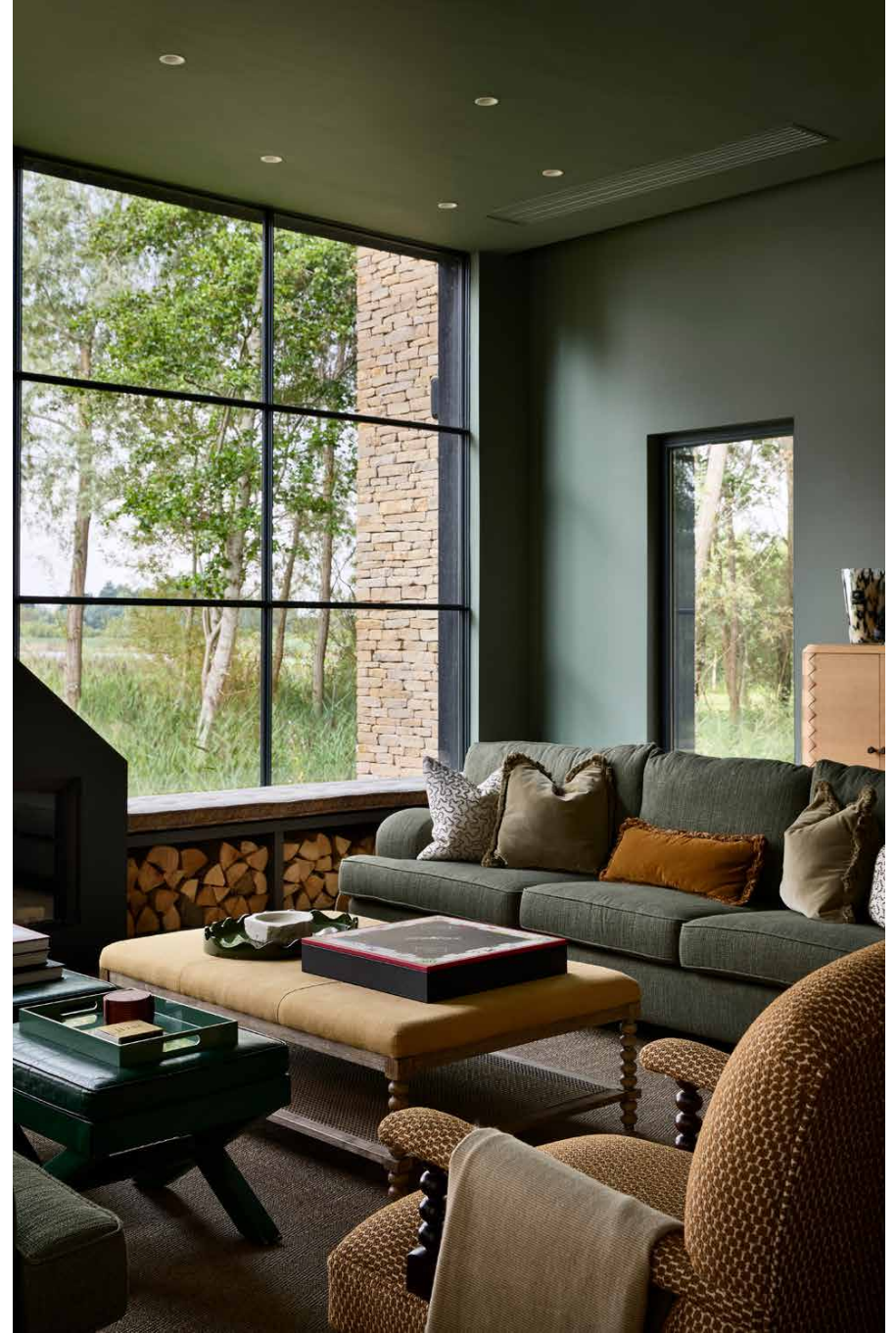
Connection is a common theme – both with the surroundings and each other. In a second standout living space, Crittall glass spans an entire wall bringing the lake into uninterrupted focus once more. A monumental log burner keeps things cosy, creating an ideal backdrop for boardgames, reading or pressing pause.











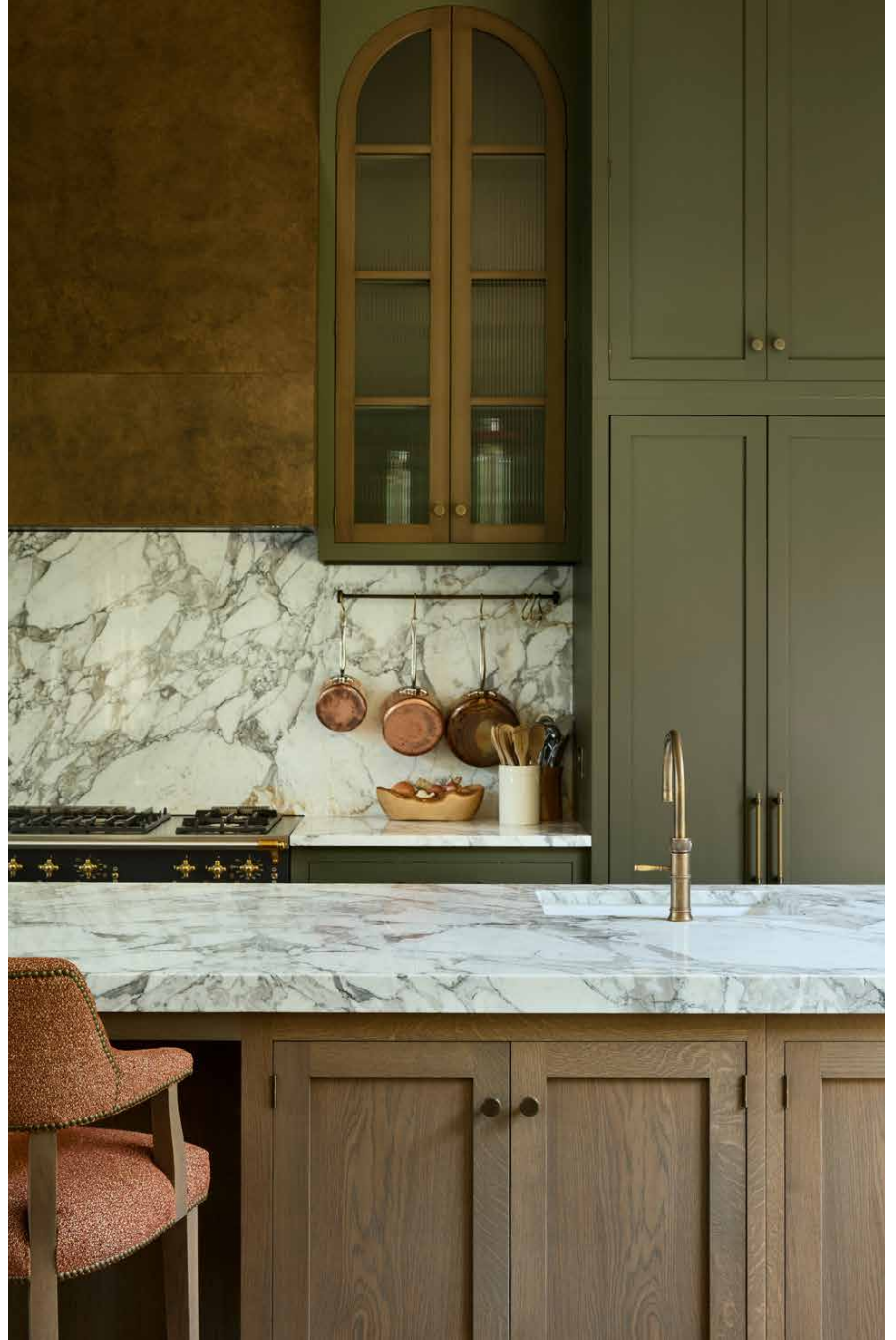




Kitchen & dining

Classic refinement meets contemporary function in the kitchen and dining room – a considered area for coming together, with a colour palette plucked straight from nature. Burnished copper and sage green accents mirror the tones of the surrounding trees through the seasons, accentuating the peaceful atmosphere. There's a real sense of ease: tall cabinetry underscores the openness and proportions of the space, while endless windows dissolve all boundaries with the outdoors.

The room not only looks the part; it acts it. Take note of the marble breakfast bar, state-of-the-art Lacanche stove, and formal dining table for 10. A fully equipped laundry and utility room discreetly serves the everyday.



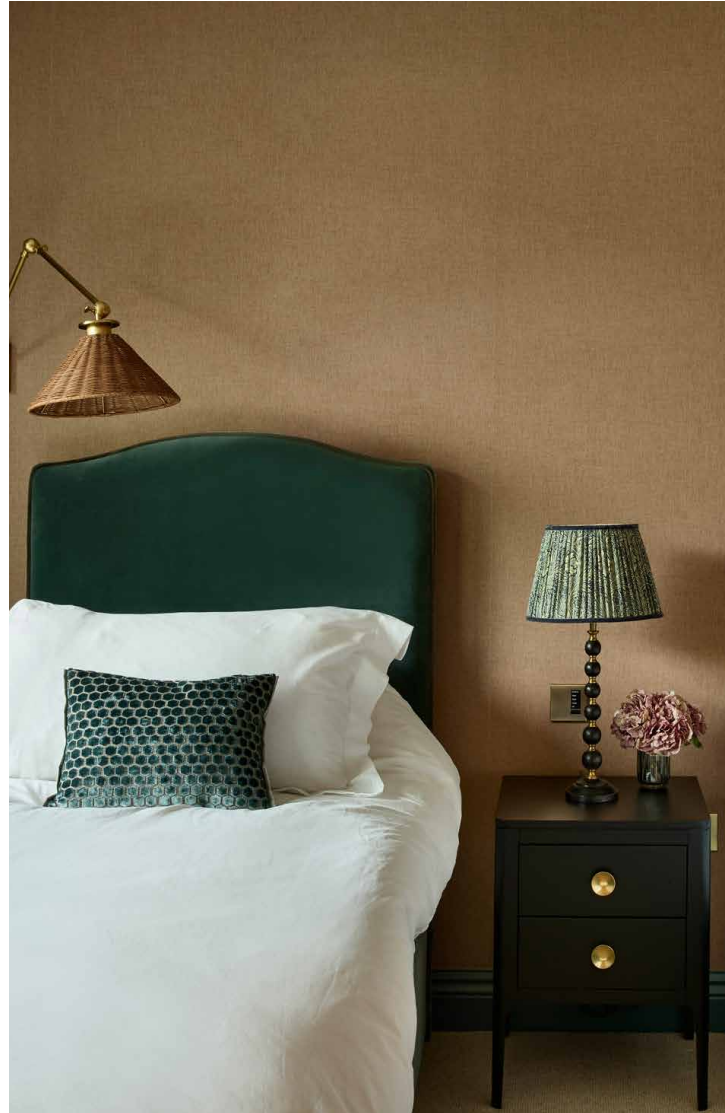


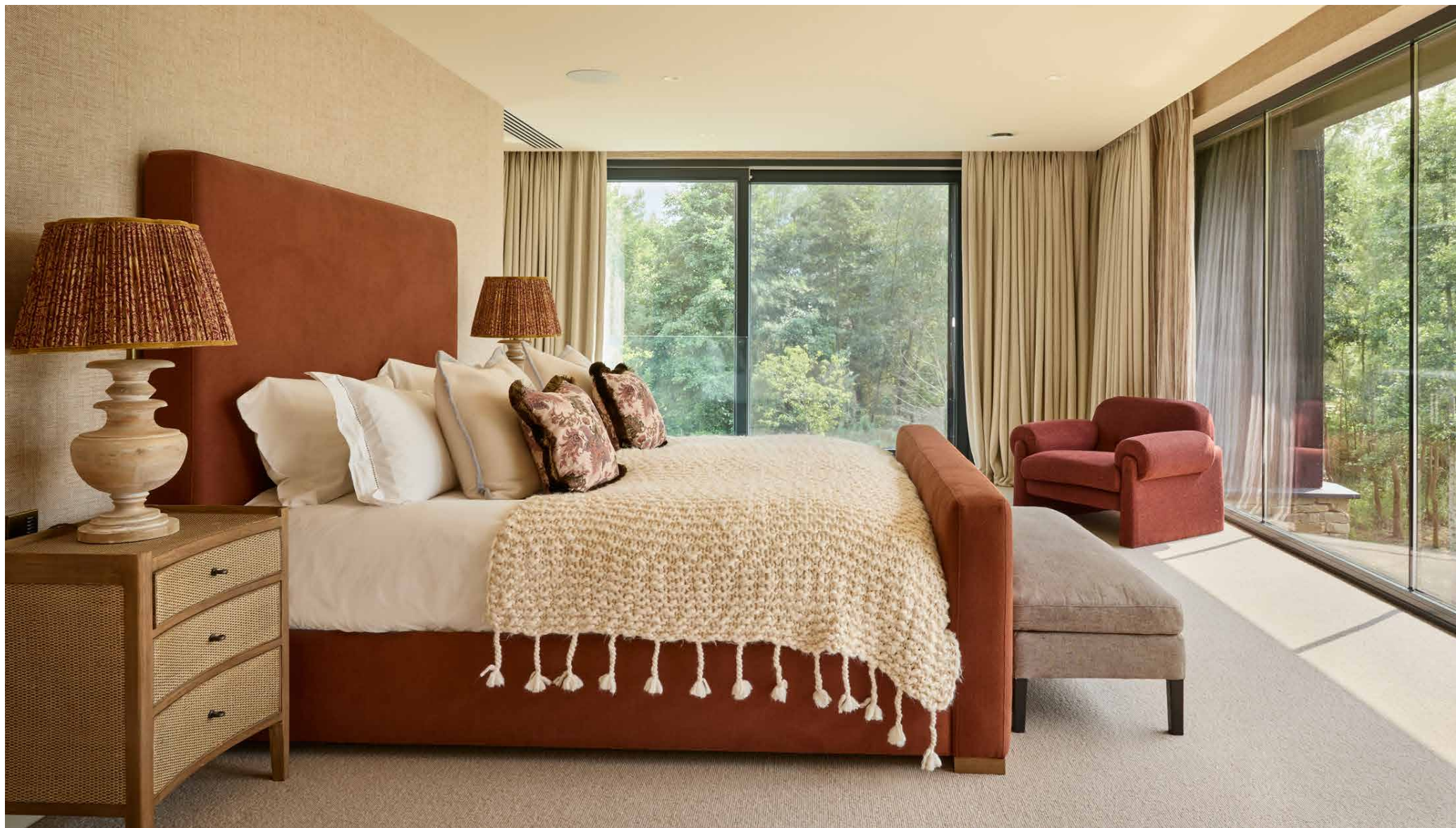
Bedrooms & bathrooms

Each of the six beautifully appointed bedroom suites is its own private retreat. Conducive to switching off, picture windows sync with the circadian rhythm, while materials are natural, tactile and a lesson in barefoot luxury.

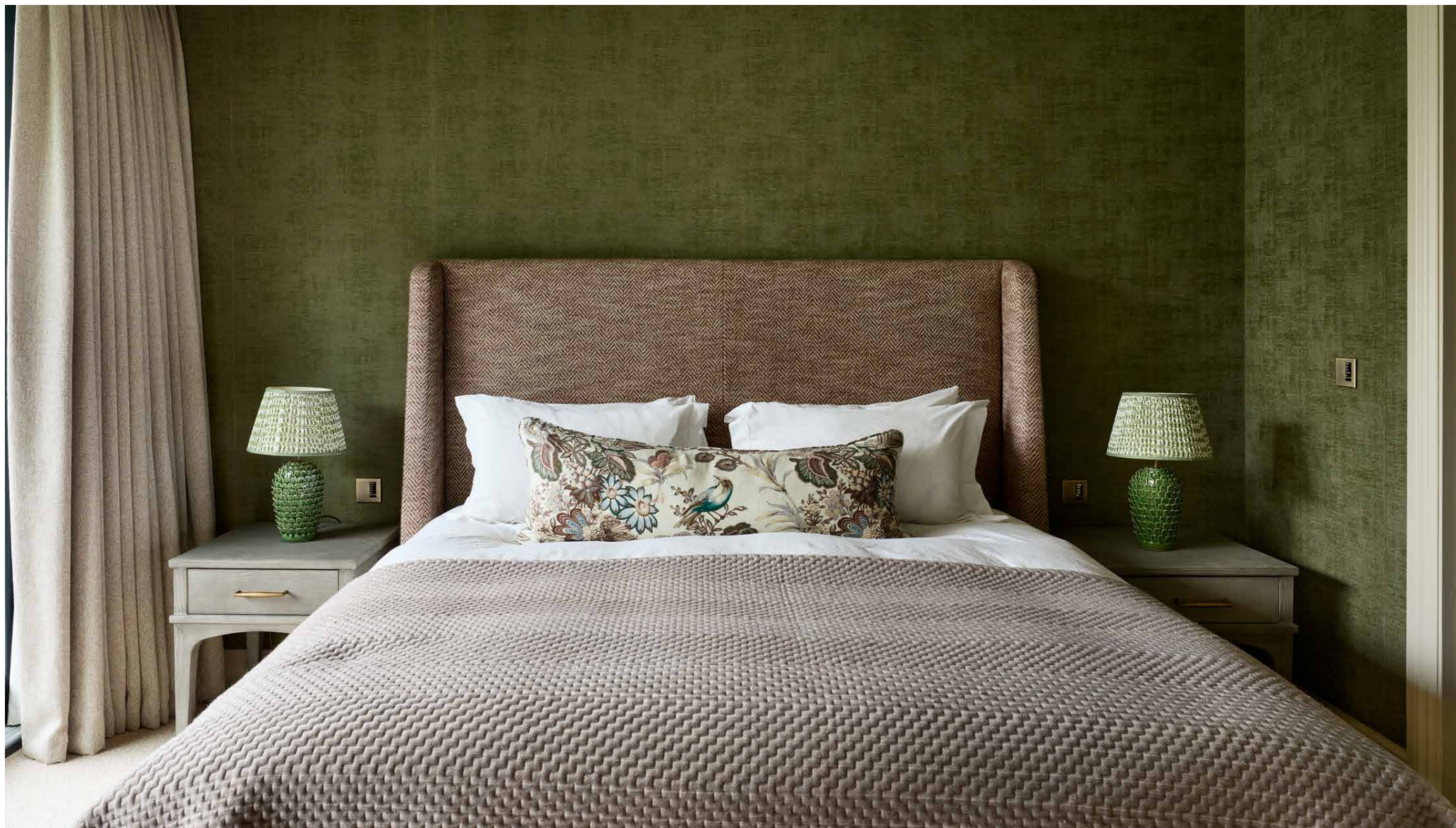
In the principal suite, a super-king-sized bed upholstered in terracotta fabric is undeniably inviting. So is the considered en suite bathroom, complete with a dual vanity unit, walk-in shower and deep bathtub; grab the binoculars to birdwatch as you soak.

The other bedrooms are variations on the same theme, with plushly upholstered beds and spa-like bathrooms. Some open onto a glass fronted balcony; each celebrates craftsmanship. Among them, a playful quad bunk room is reserved for the youngest guests.

















Outdoor space

Indoor-outdoor living is the way of life at Lakeside Manor. From the main living and kitchen space, step out to a deck that's equally set up for leisure and entertaining, with a sitting area, dining table and sun loungers. The real star of the show, though, is the standout 14-metre heated pool, which competes for attention only with the lake beyond. Both put you right on the shoreline to nature, natural beauty and undisputed privacy.

A private driveway – with EV charging station – adds to the feeling of seclusion, while the estate's 24/7 security ensures complete peace of mind.





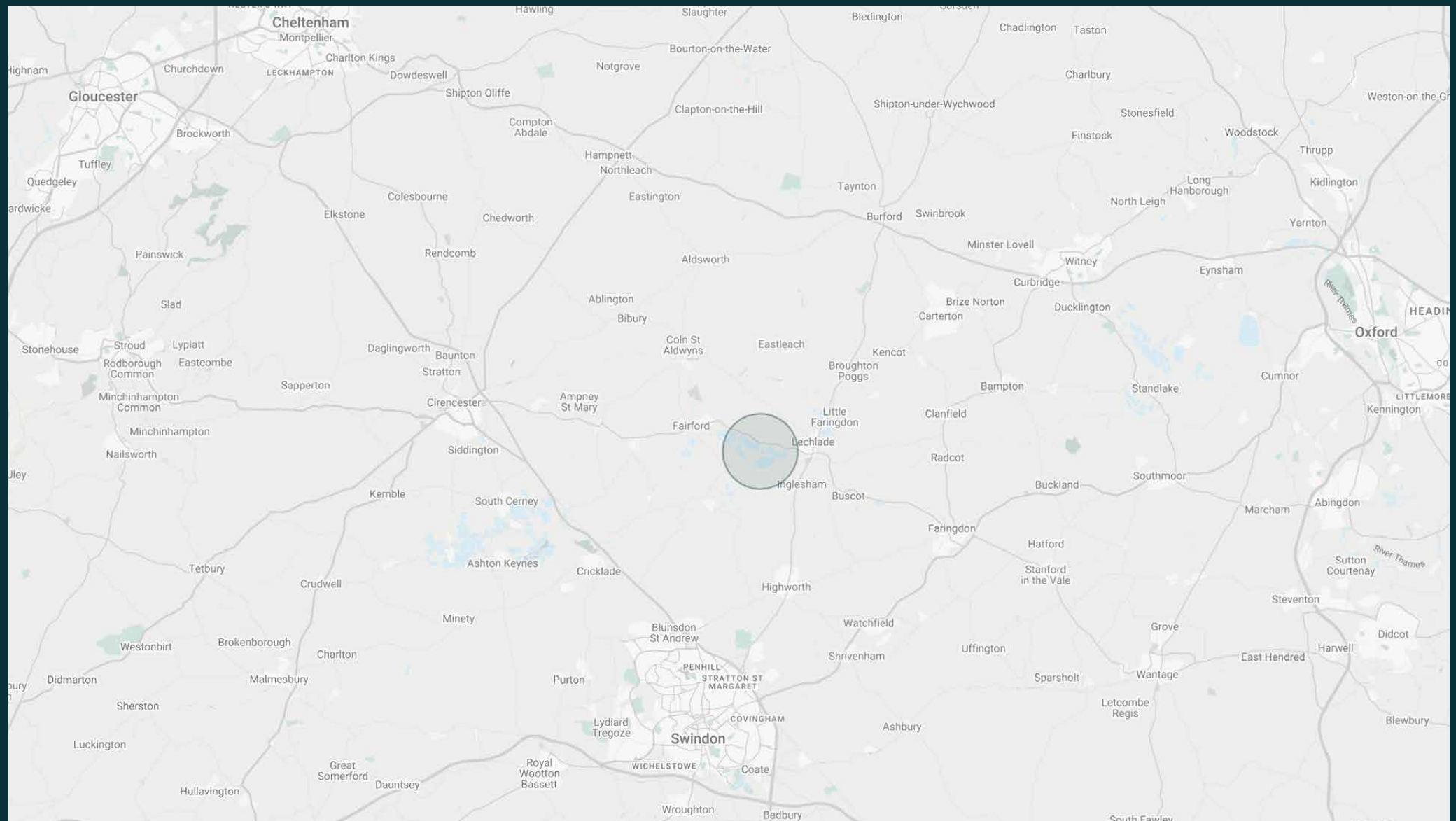
The surroundings

Right on the Gloucestershire edge of the Cotswolds, the everyday revolves around the river in nearby Lechlade. Boating, paddleboarding and walking the Thames Path intersperse days spent browsing independent antiques shops and the impressive St Lawrence Church. Other Cotswolds hotspots are in easy reach – from charming Bibury to bustling Cirencester. Not that you need to leave the grounds of your gated community. On the doorstep, and at your disposal, a sensational spa and restaurant turn up the dial on relaxation and convenience.

Travel times (by car):

- Cirencester – 25 mins
- Daylesford – 41 mins
- Soho Farmhouse – 53 mins
- Oxford – 50 mins





Property features

- Expansive open-plan kitchen and living area with panoramic lake views
- 14-metre heated outdoor swimming pool
- Private cinema room
- Dedicated children's playroom
- Fully equipped laundry room and utility facilities
- Access to a spa and exceptional on-site amenities
- Private, gated location with 24/7 security
- Air conditioning
- Concierge services available upon request

What's included?

Housekeeping and a dedicated host

Spa facilities and estate-wide amenities available



Guest & concierge services

Tennis coach or yoga instructor. Tables at renowned dining institutions, tickets to sporting or music events, and tours of the surrounding countryside: we're here to ensure stays are nothing short of exceptional. Working alongside our carefully selected partners, we put tastemakers and health and wellbeing experts at our guests' fingertips.

Our statement spaces are just the starting point – to ensure everyone feels at home, our rates include:

-
- Housekeeping
 - Flexible check-in/out
 - Luxury linens and toiletries
 - Legal compliance on all our homes
 - A personal welcome and arrival essentials
 - Unlimited access to guest services and tailored experiences
 - Professional inspection before and after every stay
 - Complete discretion





Please get in touch if you have any questions
or require any further information.

hello@domusstay.com

+44 (0)20 8168 8880

The property particulars are a guide not statements. Descriptions, photographs, and plans are for guidance only. The Property is offered "subject to contract and references". No warranties, representations, License or Tenancy is given by Domus Stay. Our full disclaimer together with trading names and our Privacy Policy is shown on our website

© Domus Stay 2025. All rights reserved.

