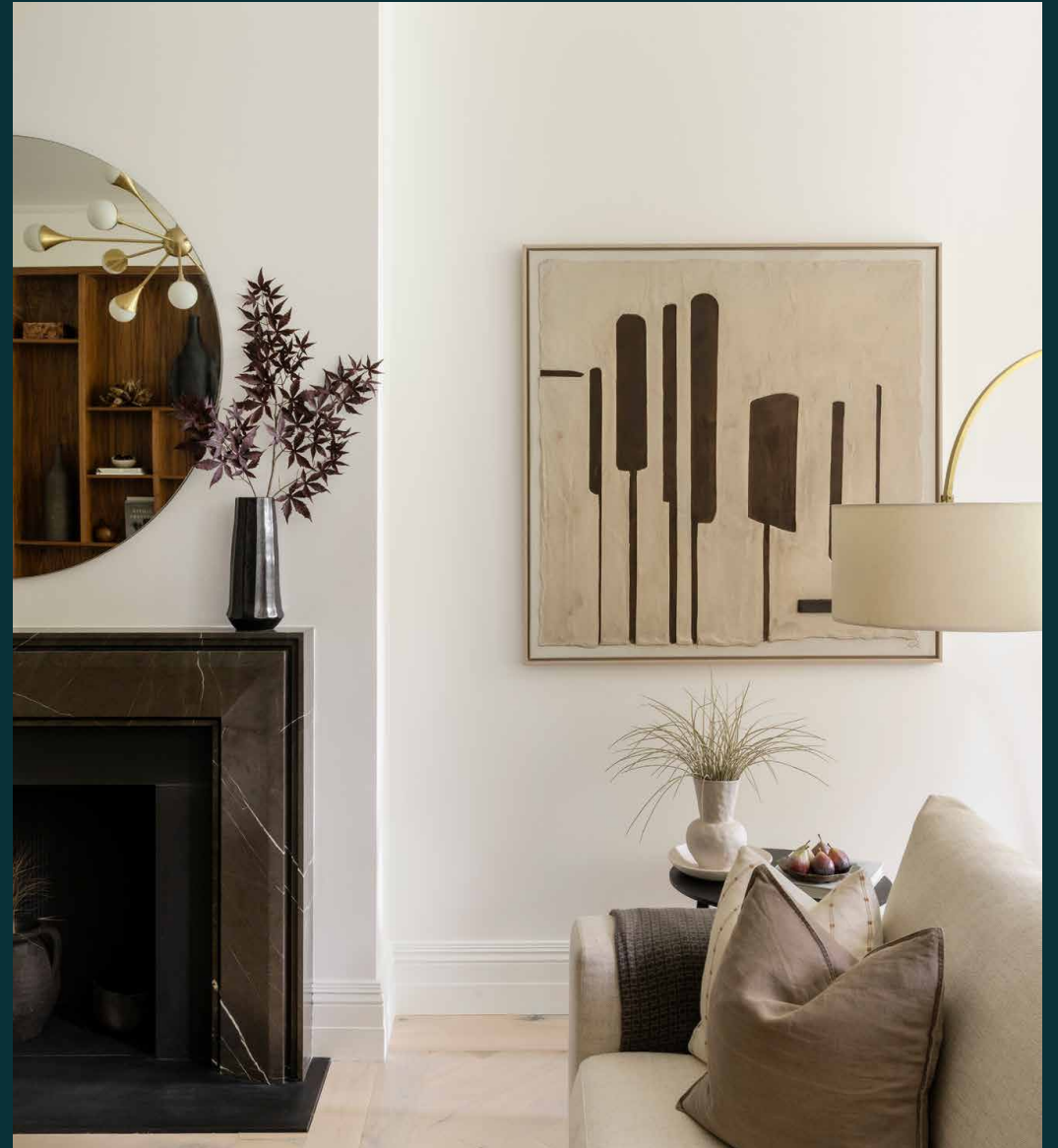


domus
stay.

Hyde Park Residence

KNIGHTSBRIDGE SW1X

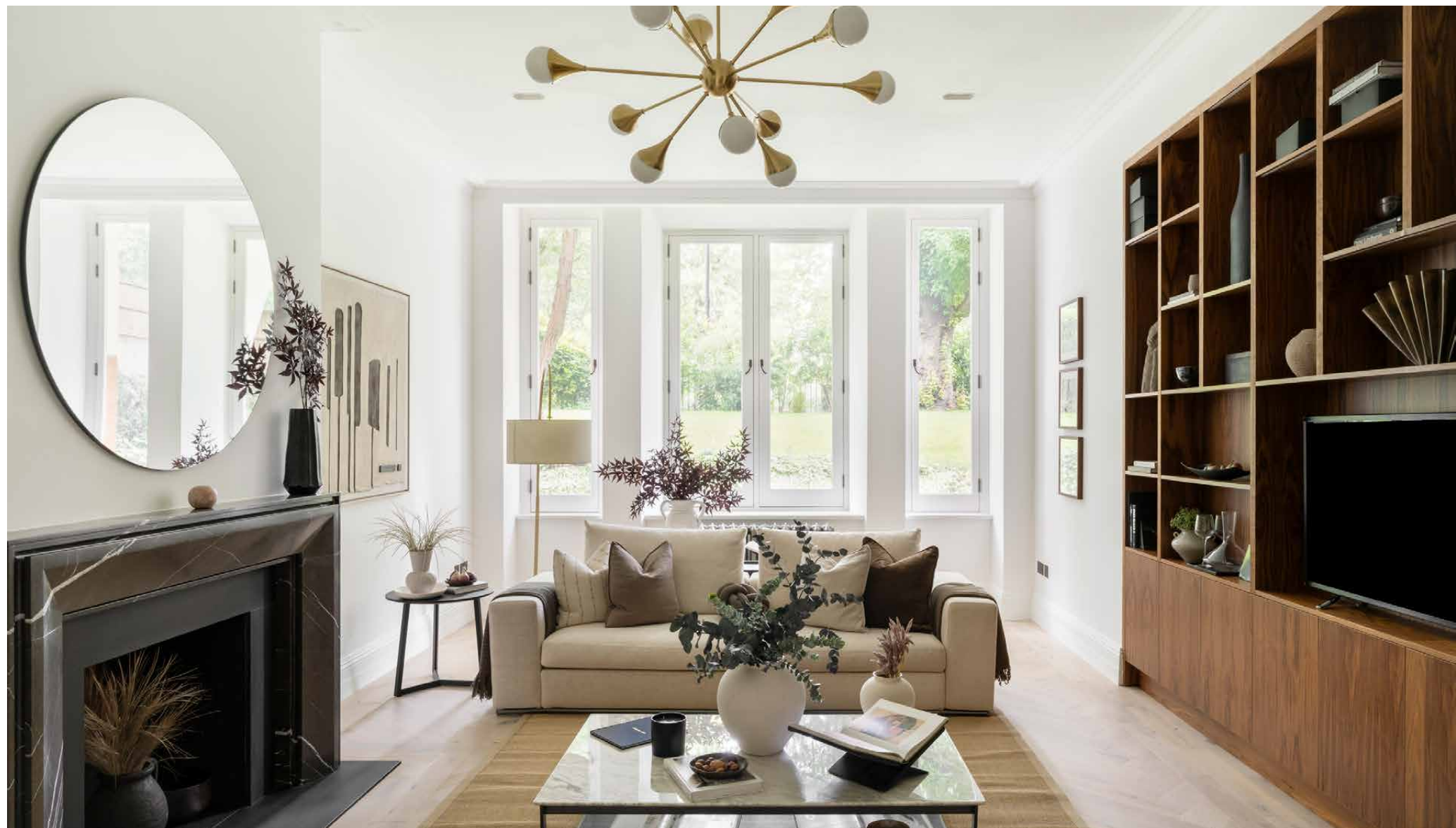
2 Bedrooms, 2 Bathrooms
For 4 guests





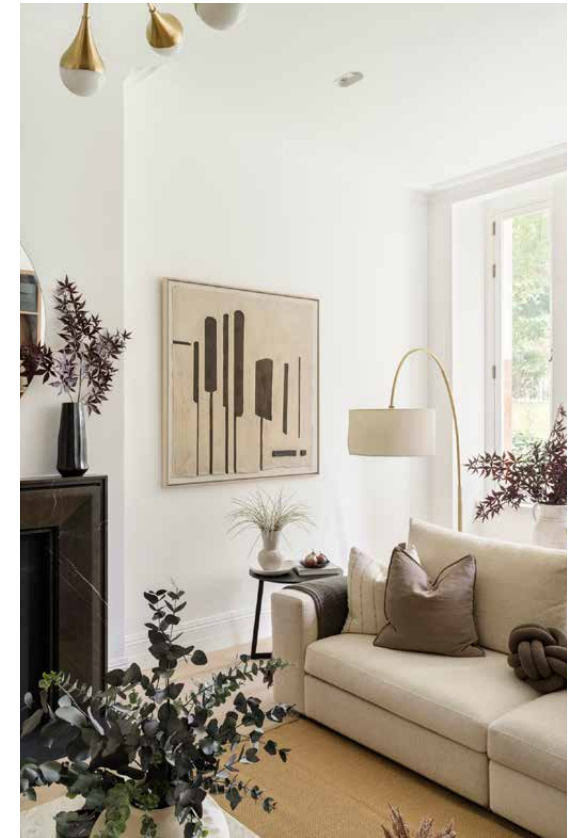
Nestled in Knightsbridge, this refined apartment to rent is a springboard to luxury shopping, fine dining and Hyde Park.

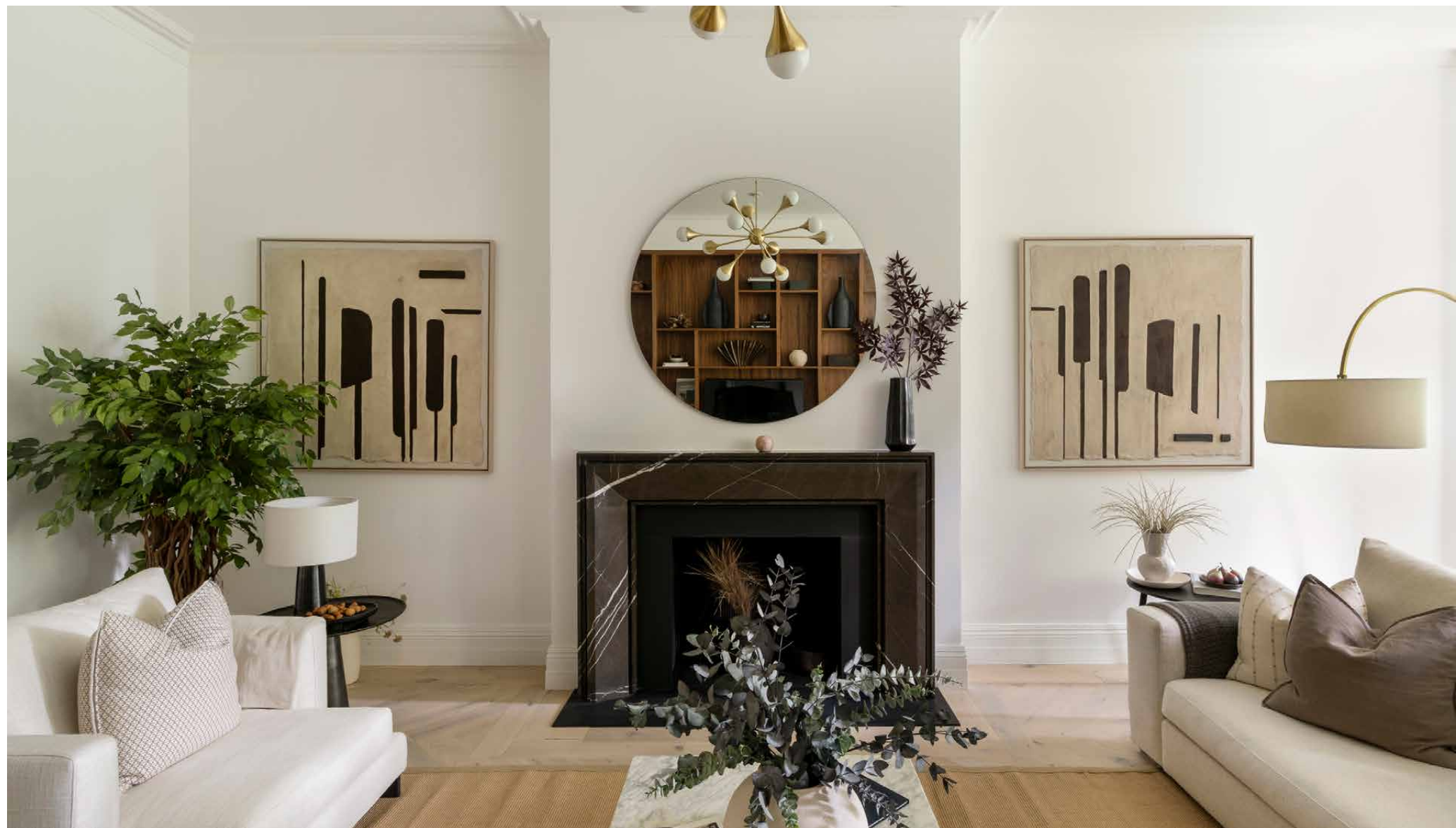
Skirting the 350-acre expanse of Hyde Park, there's a sense of peace and prestige to this two-bedroom, garden-level apartment. Tucked discreetly within an historic red-brick mansion block – with a 24-hour concierge, seven days a week – privacy is assured too.



The living spaces

Social spaces are calm and curated. In the generous reception room, neutral tones anchor the space, while sculptural lighting and a black-framed fireplace bring quiet drama. Floor-to-ceiling bookshelves in dark wood nod to mid-century influences, softened by low-slung furnishings and art-clad walls. Large picture windows frame leafy views, drawing the outside in.





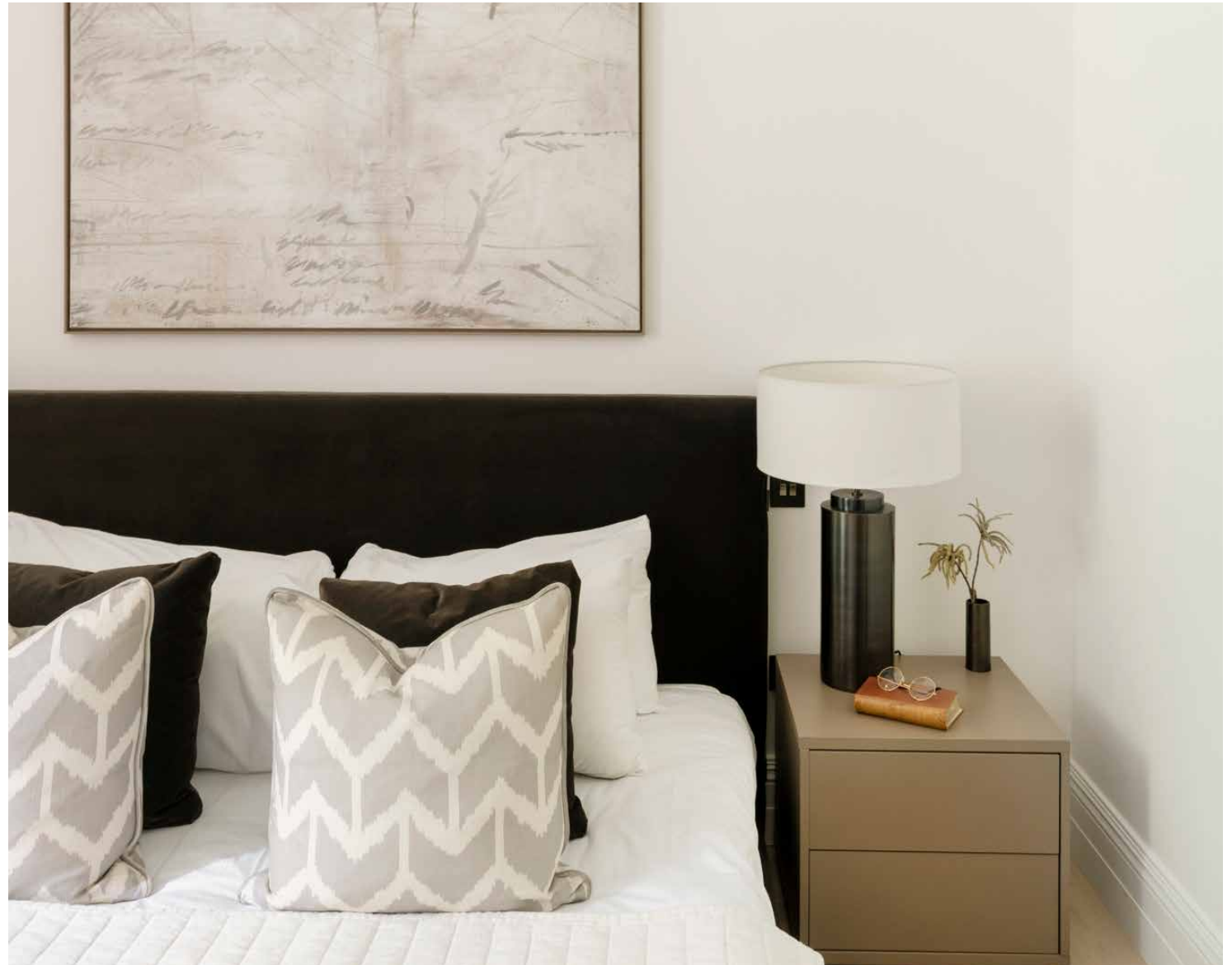


There's an ease to the footprint, which flows seamlessly into the dining area. Another elegant setting, a circular dining table topped with marble sits at its centre, awaiting leisurely breakfasts or evening dinner parties. Just beyond, the kitchen is sleek, streamlined and well-equipped, with integrated appliances, smooth stone worktops and plenty of natural light.



Bedrooms & bathrooms

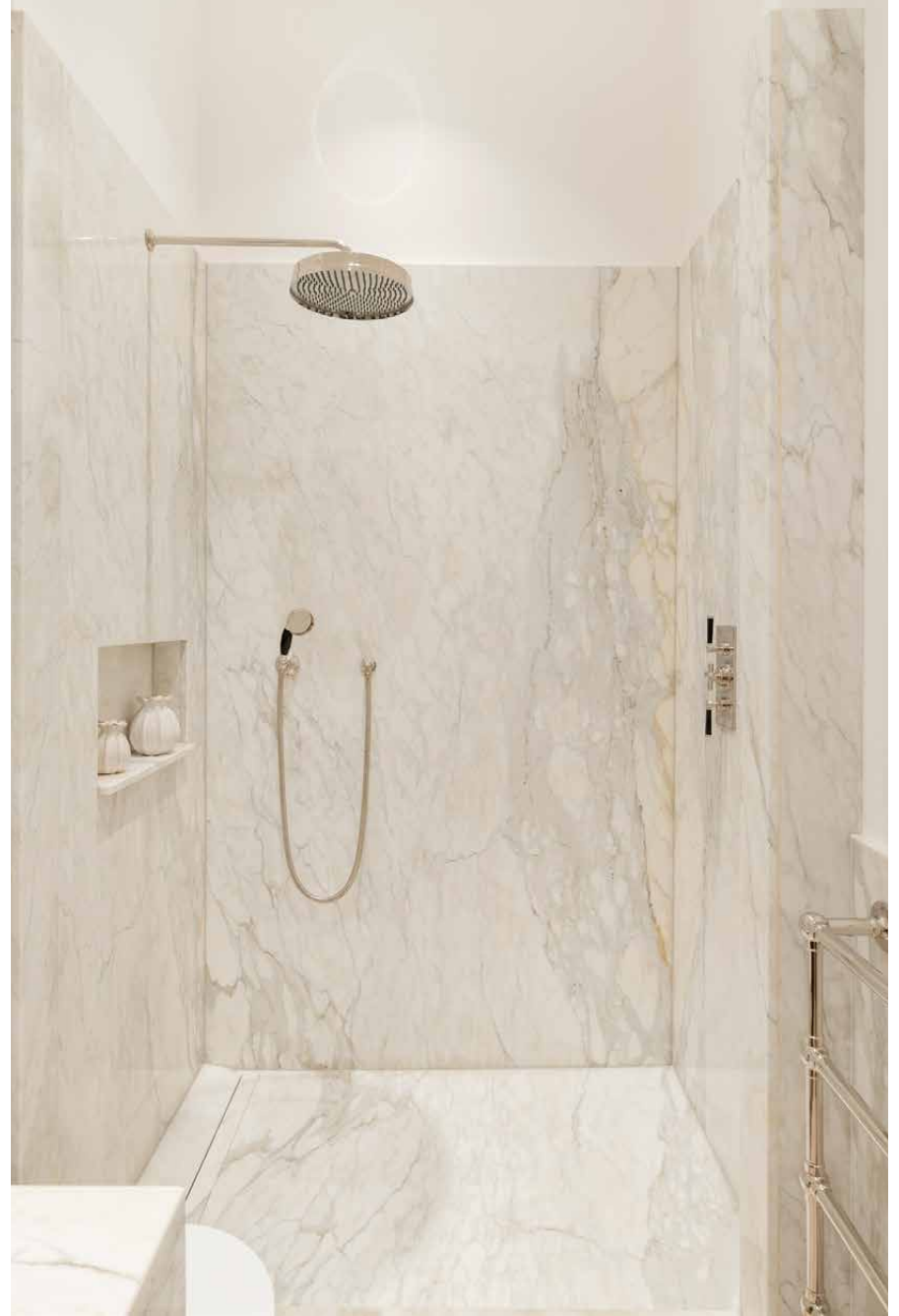
The principal suite is effortlessly tranquil – think high ceilings, soft textures and a light-drenched reading nook by the window. Its marble-wrapped en suite bathroom is quietly luxurious, with a rainfall shower, dual vanity and freestanding tub. A second bedroom, served by a shower room, continues the calm, defined by gentle minimalism and contemporary detail.

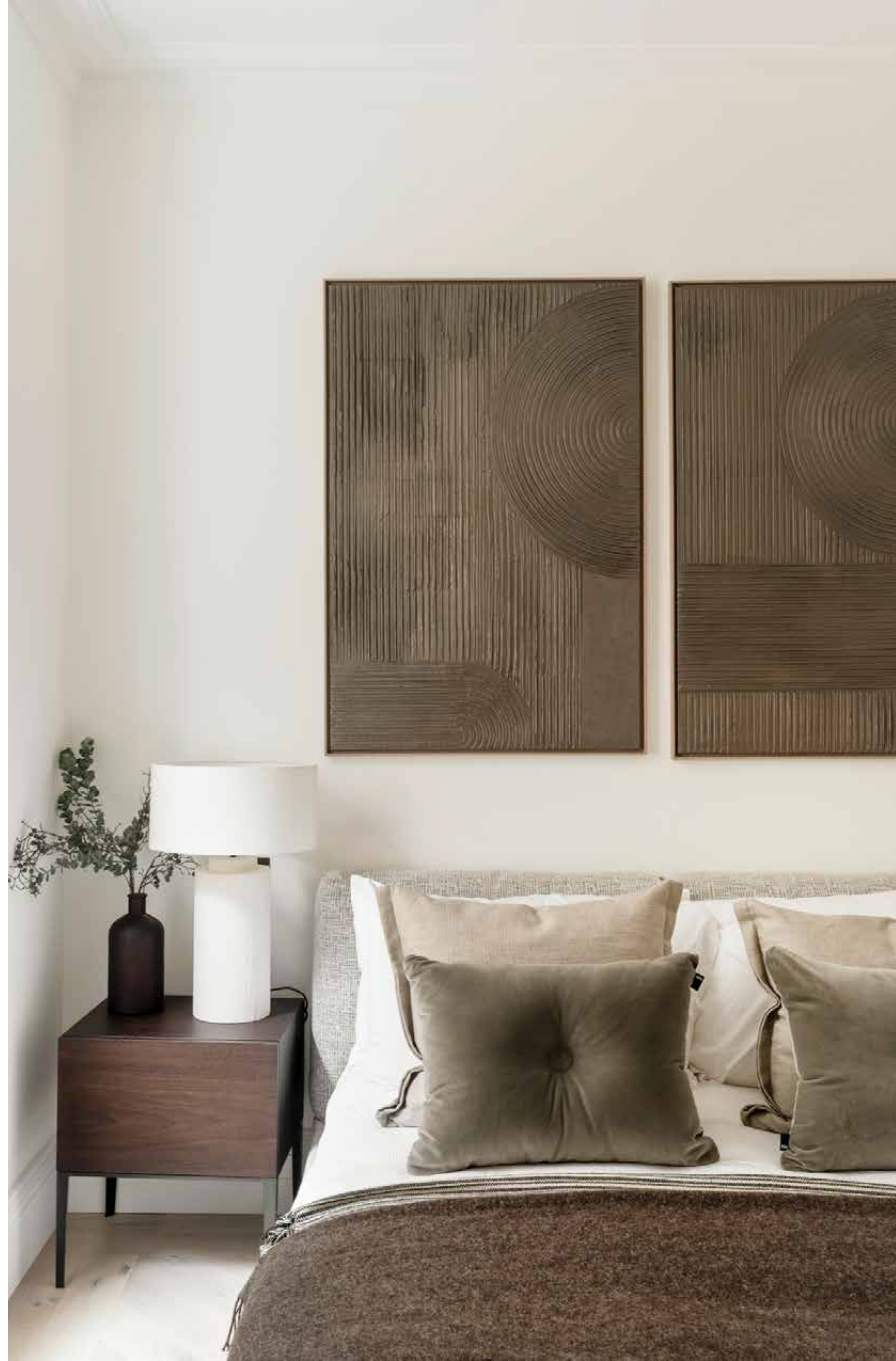






“A study in contemporary design, interiors are finessed with immaculate finishes.”





Outdoor space

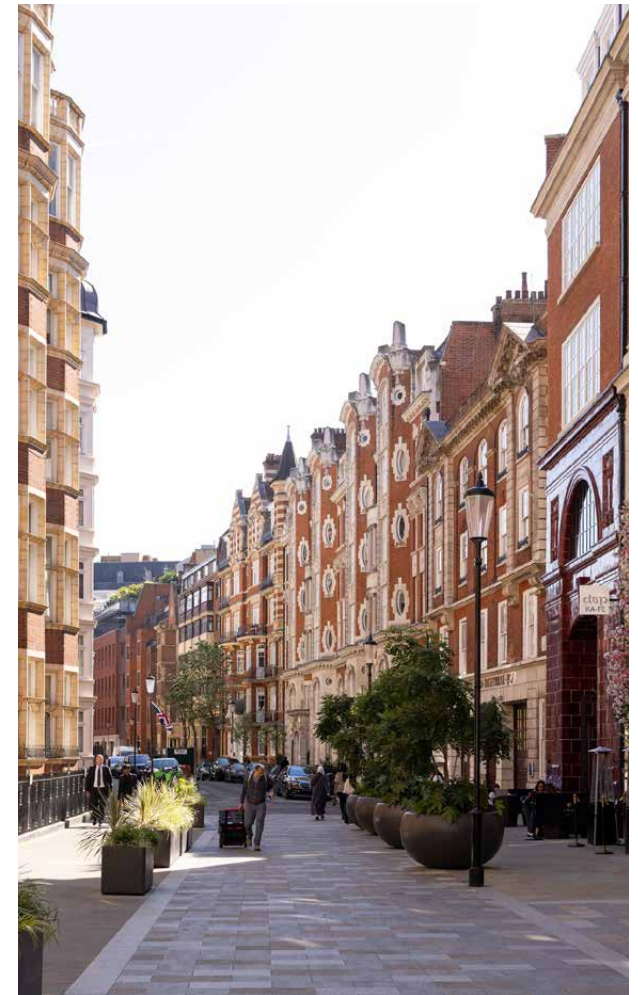
Forgoing its own private garden for the vastness of Hyde Park, abundant outdoor space can be reached in seconds here. One of the capital's eight Royal Parks, enjoy morning runs, quiet strolls and swimming in the Serpentine Lido. Horseback riding lessons through the greenery can also be arranged.

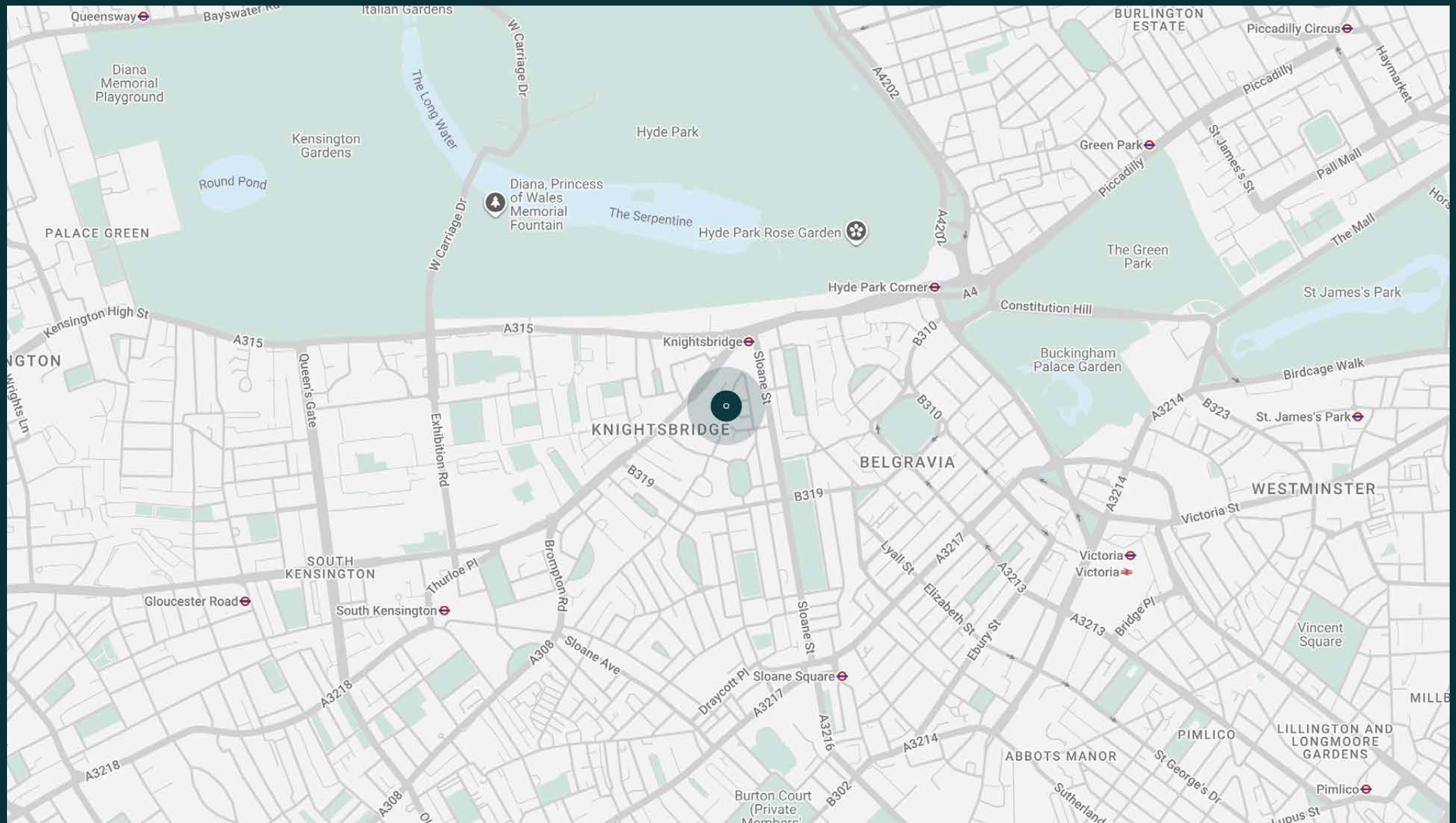


The neighbourhood

Located in the heart of Knightsbridge, you're moments from London's most sophisticated offerings.

This coveted postcode is synonymous with luxury, anchored by iconic department stores Harrods and Harvey Nichols. Michelin-starred dining is also minutes away, from Amaya to Gordon Ramsay's Pétrus and Dinner by Heston Blumenthal. For a cultural interlude, The V&A, Royal Albert Hall and Saatchi Gallery are all within easy reach – offering an ever-changing calendar of exhibitions and events.

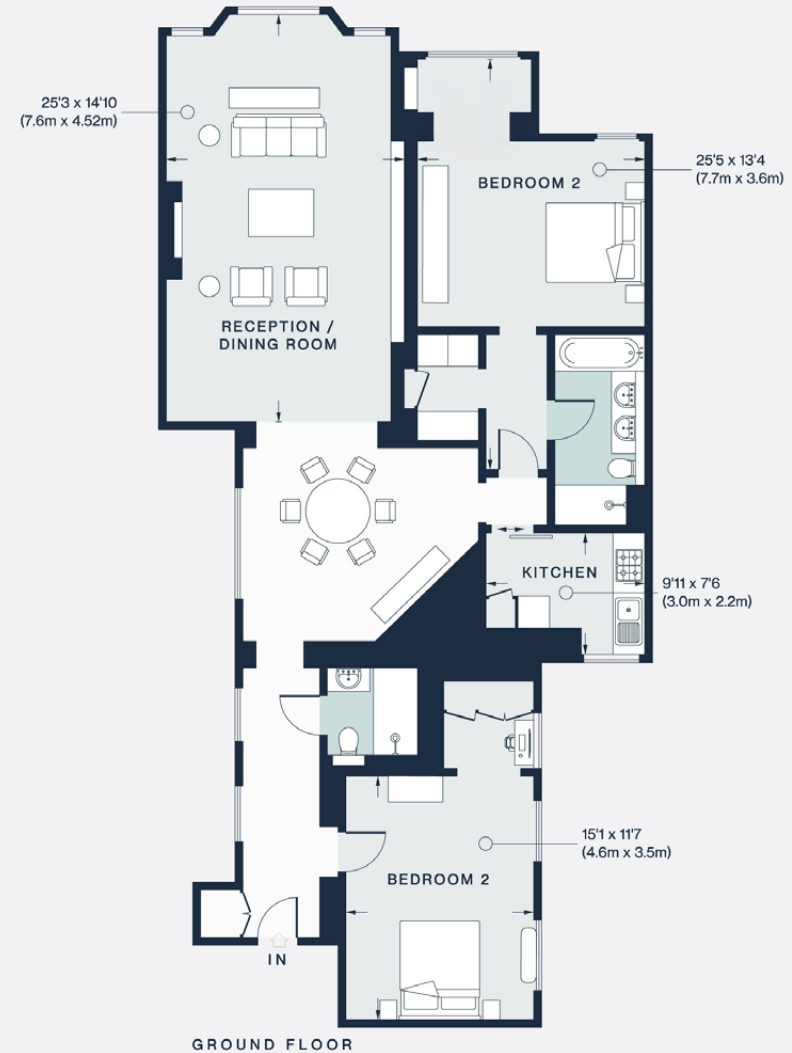




Property features

- Lateral apartment
- Contemporary kitchen
- Open-plan reception and dining room
- Principal bedroom suite with dedicated dressing area
- Guest bedroom
- One further bathroom
- 24-hour concierge, seven days a week
- Close to Hyde Park
- City of Westminster

Approx. 132.2 sq m / 1,423 sq ft



Approx. Gross Internal Area = 1,423 sq ft / 132.2 sq m

Floor plans are for illustrative purposes only and not to scale. Compliant with RICS code of measuring practice.
Prepared for Domus Stay. Copyright © All Rights Reserved.

Guest & concierge services

Our concierge team are here to help guests settle in, seamlessly. Centre court tickets to Wimbledon, Premier League seats with the best views, Savile Row tailors on standby, or a private chef to cater to individual tastes – we aim to elevate every stay.

From the moment of booking with us, each guest has a single point of contact to finesse the details. Our statement spaces are just the starting point – to ensure everyone feels at home, our rates include:

-
- Weekly housekeeping
 - Flexible check-in/out
 - Luxury linens and Bamford toiletries
 - Legal compliance on all our homes
 - A personal welcome and arrival essentials
 - Unlimited access to guest services and tailored experiences
 - Professional inventory inspection before and after every stay
 - Access to a curated portfolio of sole agency properties



domus stay.

Please get in touch if you have any questions
or require any further information.

hello@domusstay.com

+44 (0)20 8168 8880

The property particulars are a guide not statements. Descriptions, photographs, and plans are for guidance only. The Property is offered "subject to contract and references". No warranties, representations, License or Tenancy is given by Domus Stay. Our full disclaimer together with trading names and our Privacy Policy is shown on our website

© Domus Stay 2025. All rights reserved.

