

domus  
stay.

---

# Havenwood

THE COTSWOLDS & COUNTRY

13 Bedrooms, 9 Bathrooms  
For 26 guests

---





A Grade II listed Georgian manor house where entertainment offerings and acres of grounds create the ultimate countryside getaway.

Built in the 18th century and meticulously restored, this estate brings a modern mindset to its historic architecture.

Elegance echoes through every corner of Havenwood. Reception rooms are as grand and encompassing as the surroundings. A place to gather friends and family, kick back in the spa or dance the night away in the underground club. The same generosity of space extends outside. Beyond the house, enjoy padel tournaments or leisurely walks through ancient woodland.







# Outside space

Step into your very own storybook setting – 100 acres of landscaped gardens, parkland and woodland waiting to be explored. Manicured lawns slope gently toward mature trees and crocus-lined pathways wind around a lily-pad adorned lake. Note the rowing boat, ready for an afternoon drift.

Survey the sweep of countryside from the surrounding open fields, or press pause among the walled gardens, and towering hedgerows. Classic English pastimes come to life here: a game of croquet on the lawn, a swim in the heated pool, or a match on the all-weather tennis court. Also on the sporting agenda: a brand-new padel court, a golf range with complimentary access to the Bowood PGA Golf Club and a five-a-side football pitch. For quieter moments, there's a wooden hot tub, nestled within its own secluded corner.

























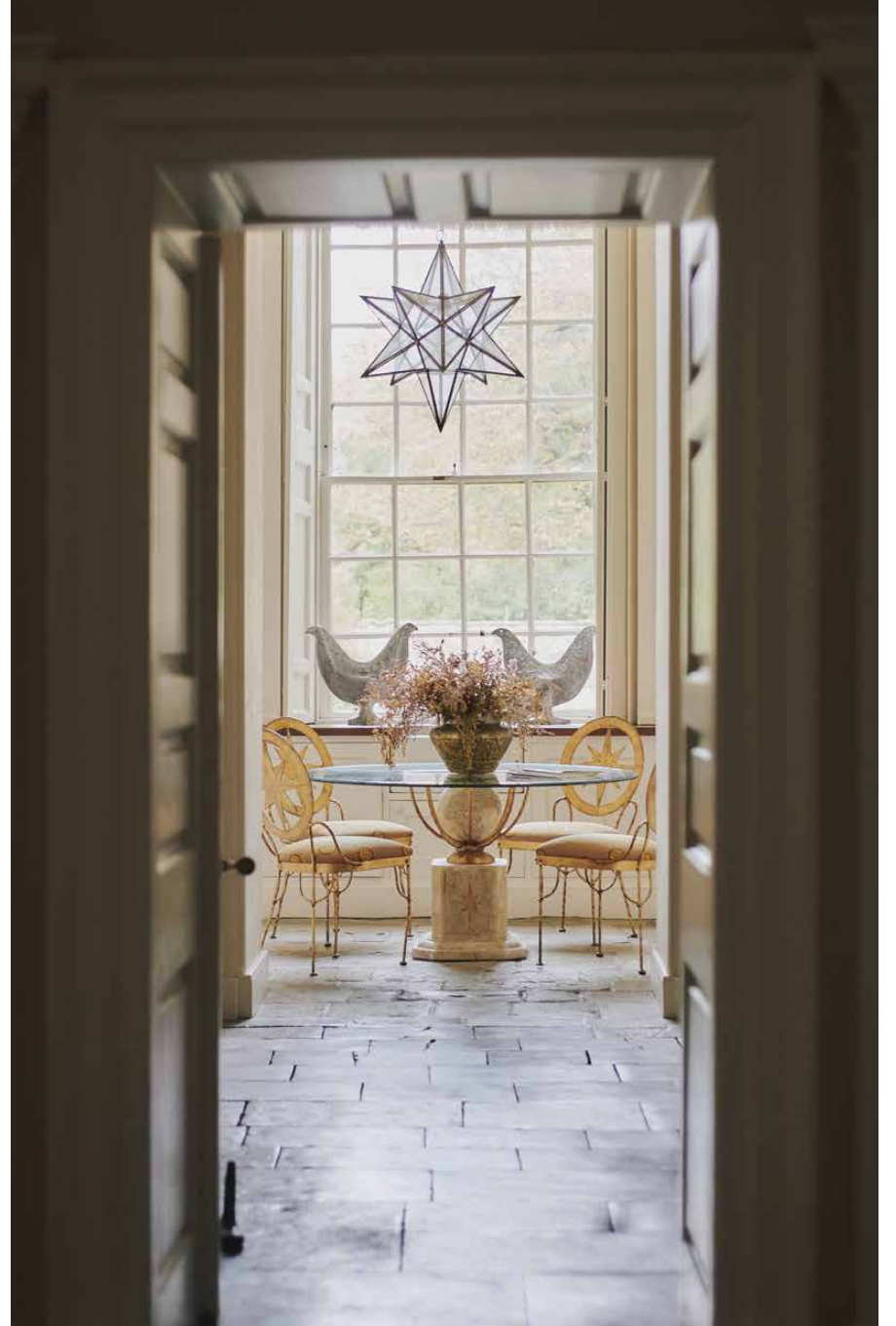


## The living spaces

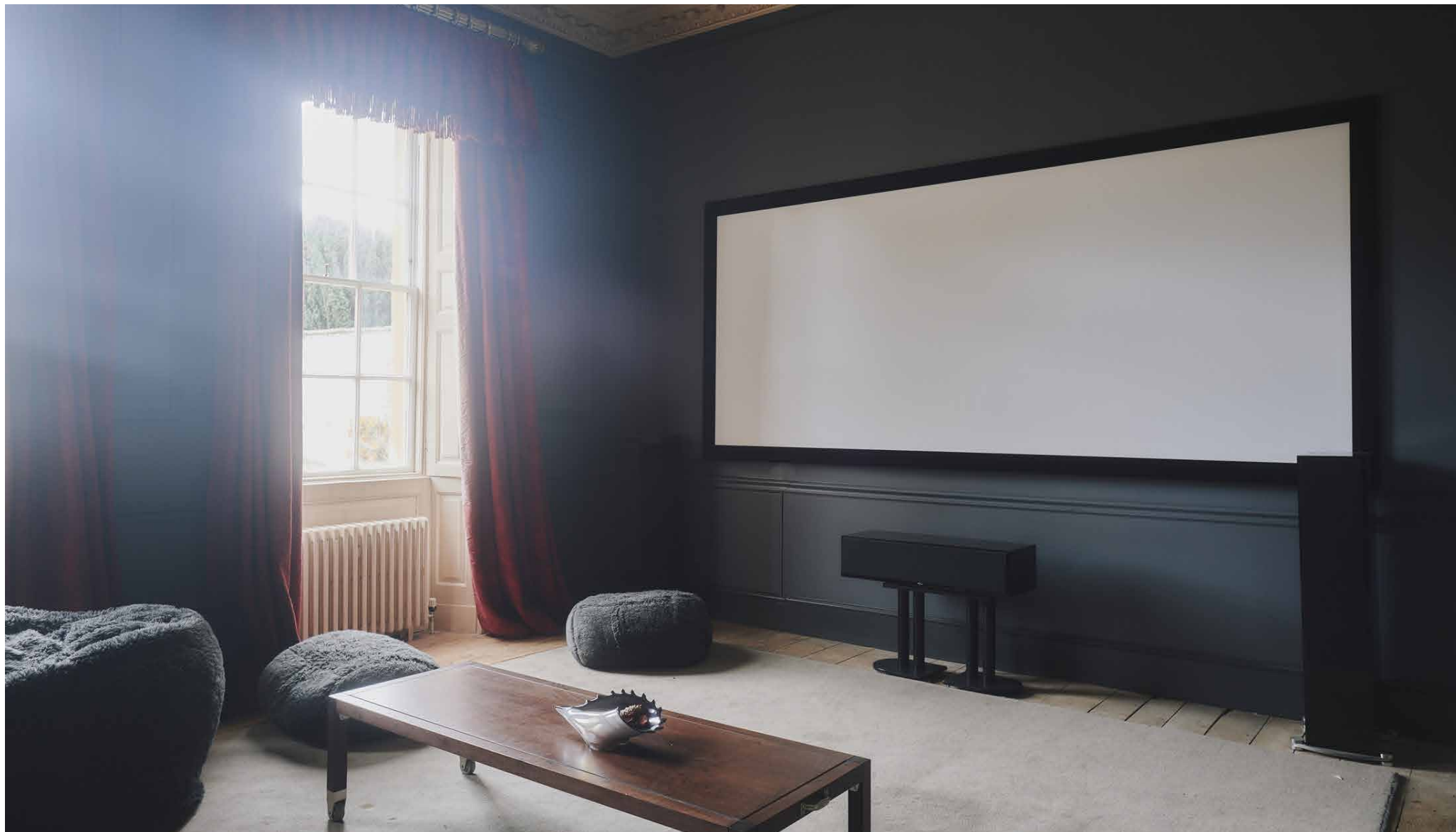
Crafted in the style of an elegant stately home, the formal reception room impresses with its lofty ceilings, floor-length draped curtains and grand proportions, setting the scene for the numerous living spaces that follow.

The kitchen is similarly statuesque, with room to cater for a crowd. There's a farmhouse feel too, that extends beyond the Aga to the white cabinetry and black and white tiles. With its charmingly mismatched chairs, the adjoining breakfast room radiates warmth and ease – and calls for leisurely family brunches.





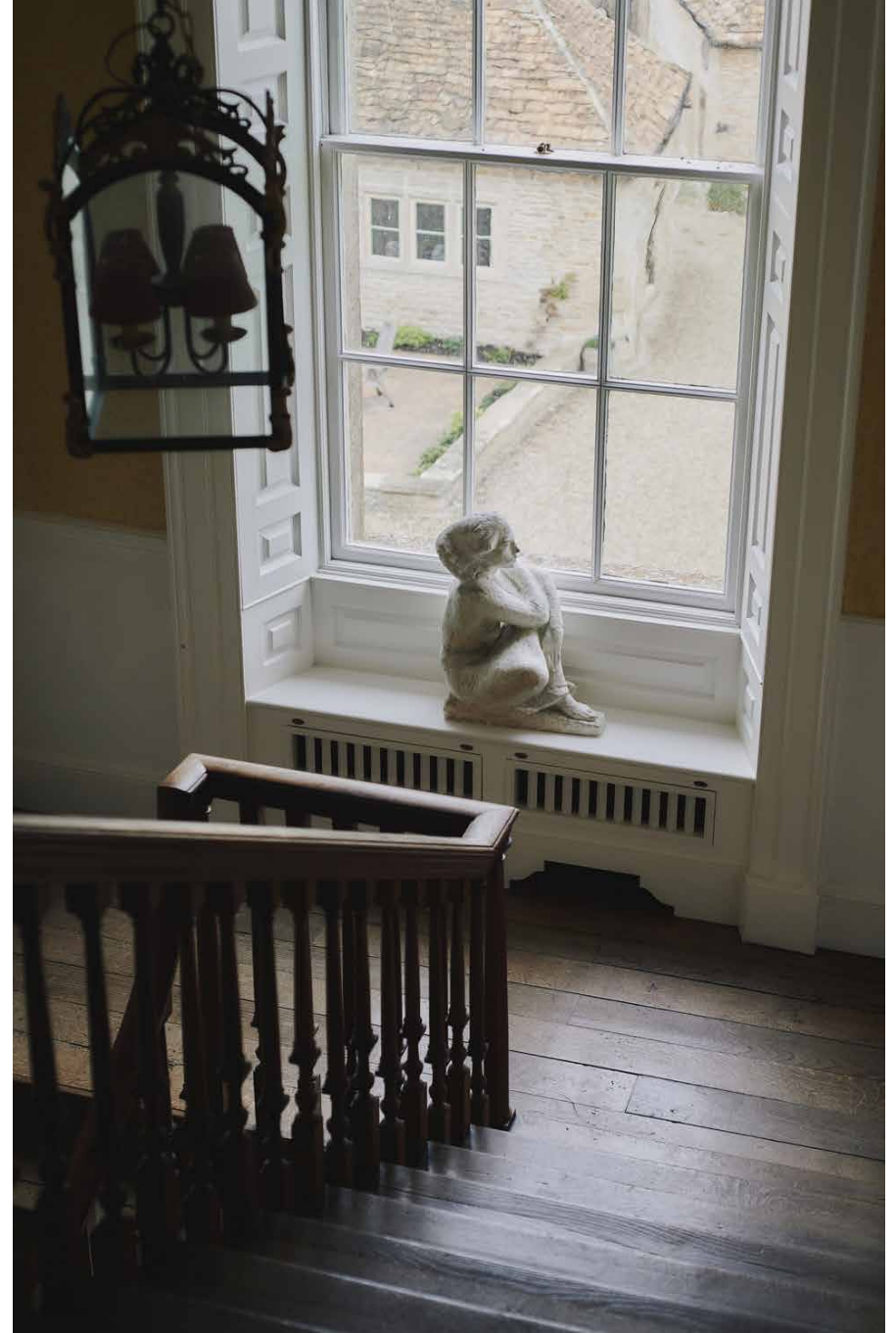












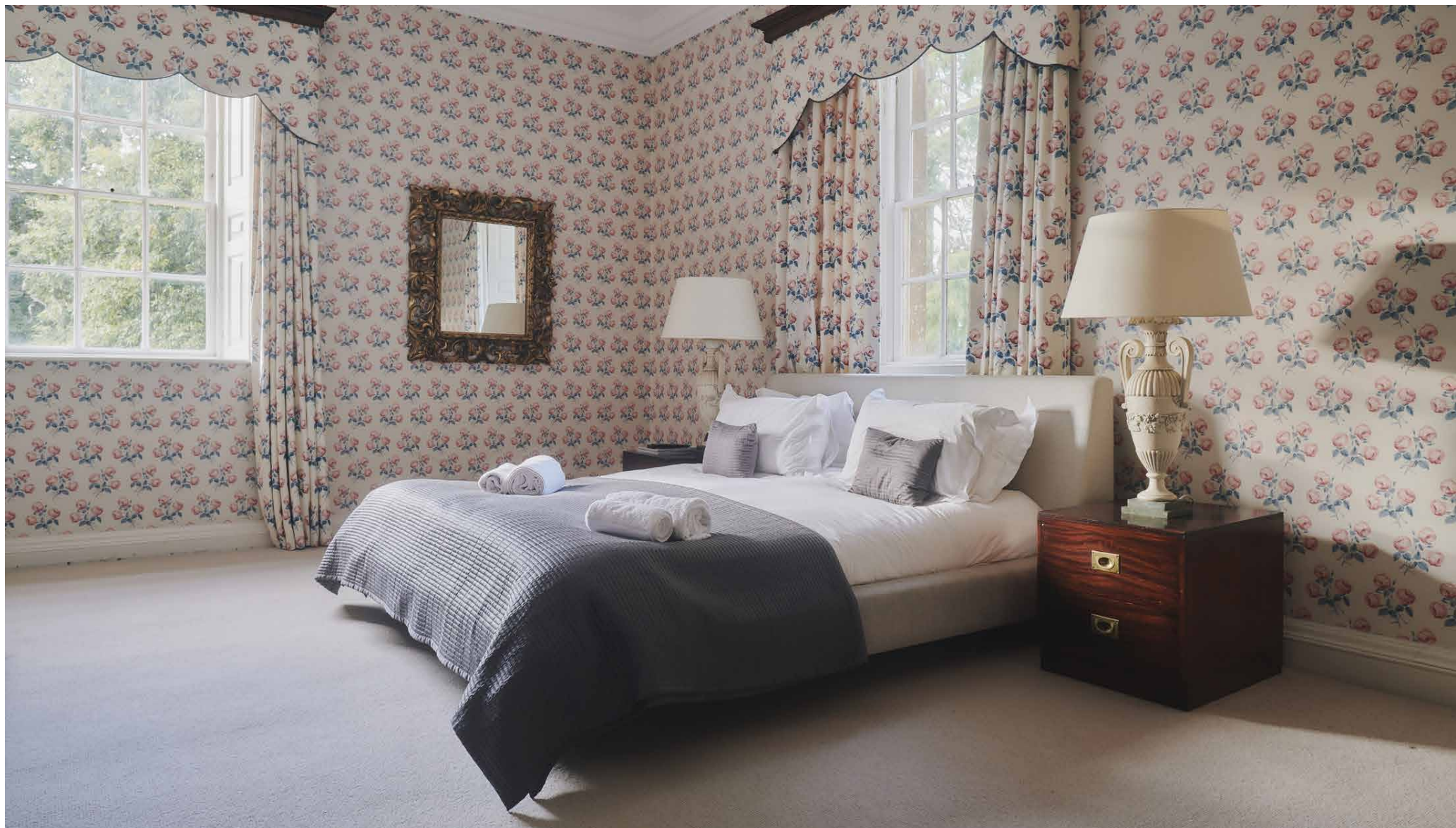




## Bedrooms & bathrooms

The rest of the top floor is dedicated to the principal bedroom, its lofty feel enhanced by white-painted beams and impressive ceiling height. Twin heritage skylights flood the room with natural light, while shiplap-fronted wardrobes keep the palette calm and relaxing. The en suite continues the theme, with bold marble tiles, a Kaldewei Centro Duo Oval bath and a separate rainfall shower. On the ground floor, the guest bedroom is neatly arranged with bespoke cabinetry framing the bed, complemented by an en suite finished with a Dorn Bracht matte platinum rainfall shower.





















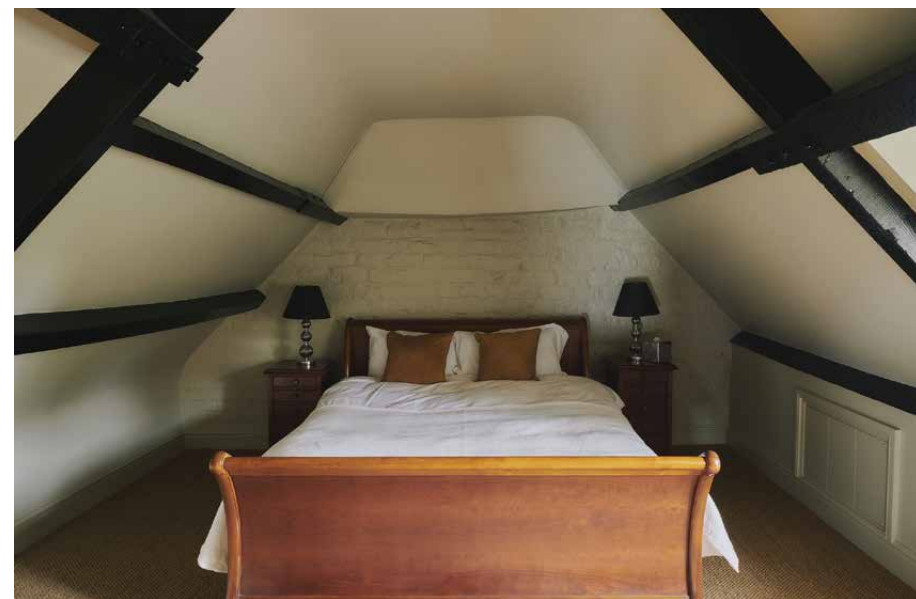
















## Underground entertainment

For milestone celebrations, the private nightclub tucked beneath the manor provides an unforgettable setting. Set within stone-walled cellars, a DJ station, two bars, three lounges and a generous dance floor create a uniquely immersive party space, for up to 150 guests.



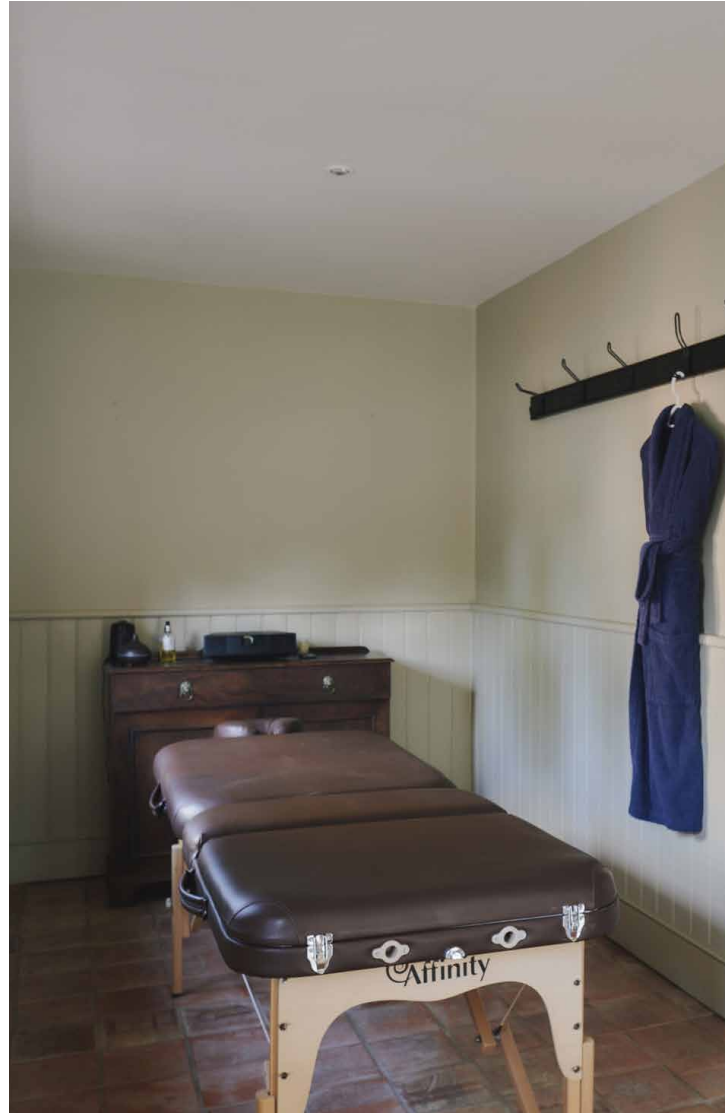






## Leisure & wellness

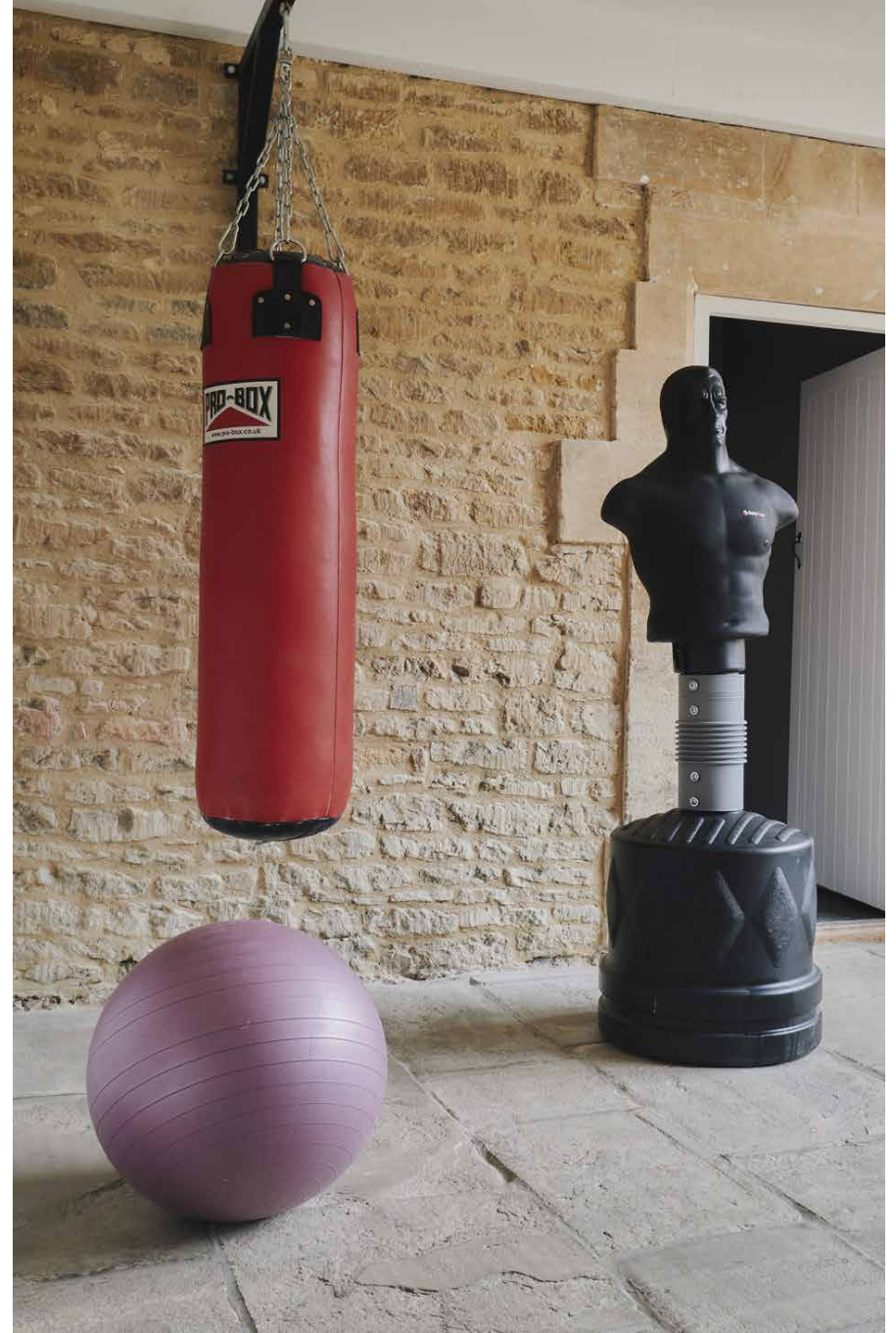
For quieter moments, Havenwood offers a wealth of diversions. Challenge friends to a round of snooker or table tennis, then retreat to the cinema room, where a state-of-the-art projector is all set for movie marathons. Wellness seekers will find sanctuary in the newly built steam room, wrapped in soft micro-tiles and infused with aromatherapy oils. The adjoining gym provides a well-equipped space for workouts, while the dedicated massage room invites deep relaxation – the perfect counterpoint to an active day in the countryside.





























# The surroundings

Havenwood offers every luxury within its grounds, yet beyond the estate, Wiltshire and the Cotswolds host a wealth of nature, food and culture to discover. On your doorstep, the town of Chippenham offers a taste of local life – sample artisanal goods and regional delicacies at the weekly market in The Buttercross. Take a drive to Bowood House and Gardens – a Palladian mansion set within expansive landscaped gardens. Or there's Grade I listed Iford Manor Gardens, a romantic, Italianate-style haven of water features and follies. Just 20 minutes away, Castle Combe is home to Michelin-starred Bybrook restaurant – set within a 14th-century manor.

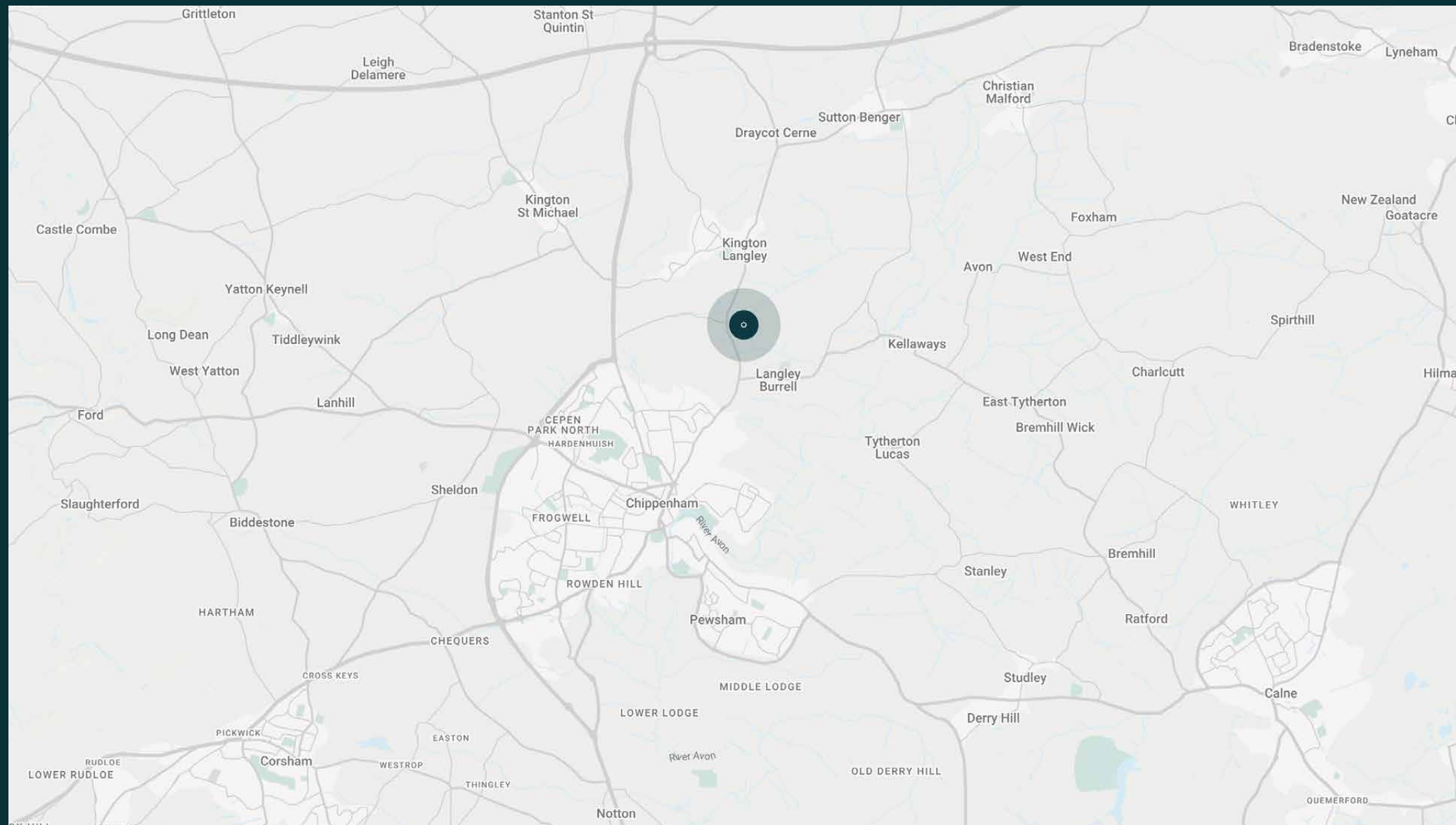
Outdoor enthusiasts can enjoy walking and cycling routes through rolling hills, woodlands, and tranquil valleys. Or make the trip into Bath, for its unmissable blend of Georgian architecture, Roman history and fine dining.

Chippenham – 5 mins

Bath – 40 mins









# Property features

- Formal dining room
- Breakfast room
- Drawing room and study
- Cinema room
- Cellar nightclub
- Outdoor heated swimming pool
- Hot tub, steam room and gym
- All-weather tennis court
- Brand-new padel court
- Golf range and free access to Bowood PGA Golf club
- Five aside football pitch
- Snooker and table tennis
- Croquet lawn
- 100 acres of formal gardens, parkland and woodland
- Housekeeping, chefs, concierge and daily cleaning

---

## What's included?

Concierge and daily housekeeping

Customisable amenities and activities available to add





# Guest & concierge services

Tennis coach or yoga instructor. Tables at renowned dining institutions, tickets to sporting or music events, and tours of the surrounding countryside: we're here to ensure stays are nothing short of exceptional. Working alongside our carefully selected partners, we put tastemakers and health and wellbeing experts at our guests' fingertips.

Our statement spaces are just the starting point – to ensure everyone feels at home, our rates include:

- 
- Housekeeping
  - Flexible check-in/out
  - Luxury linens and toiletries
  - Legal compliance on all our homes
  - A personal welcome and arrival essentials
  - Unlimited access to guest services and tailored experiences
  - Professional inspection before and after every stay
  - Complete discretion





# domus stay.

Please get in touch if you have any questions  
or require any further information.

[hello@domusstay.com](mailto:hello@domusstay.com)

+44 (0)20 8168 8880

The property particulars are a guide not statements. Descriptions, photographs, and plans are for guidance only. The Property is offered "subject to contract and references". No warranties, representations, License or Tenancy is given by Domus Stay. Our full disclaimer together with trading names and our Privacy Policy is shown on our website

© Domus Stay 2025. All rights reserved.

