

domus
stay.

Hampstead Village House

HAMPSTEAD NW2

4 Bedrooms, 4 Bathrooms
For 8 guests





Rising four storeys high, this four-bedroom Hampstead townhouse to rent brims with character.

Built in 1709, Hampstead Village House is as storied as its historic Hampstead surroundings. On the doorstep to the Heath and with a quaint churchyard as a neighbour, it feels peaceful, private and as close to a rural setting as you'll find within the capital. The home's Grade II-listed status means it's every bit as impressive inside: expansive period proportions are warmed by classic interior design by Colefax and Fowler.



The living spaces

The living spaces are numerous and generous in size. Sisal carpets, printed upholstery and antique furniture are in tune with the heritage backdrop, updated with a contemporary eye – from the integrated speakers operated by iPad controllers to the entertainment room and elaborate security system.

On the ground floor, two sash windows brighten the drawing room while a fireplace adds a cosy dimension. Elsewhere, the vivid red music and media room is all set for unwinding, as is a second reception room lined with bookshelves; select a paperback to read by the grandfather clock. When you need to plug in, the dedicated study has enough desk space for two.







“Sisal carpets, printed upholstery and antique furniture are in tune with the heritage backdrop, updated with a contemporary eye.”







Kitchen & dining

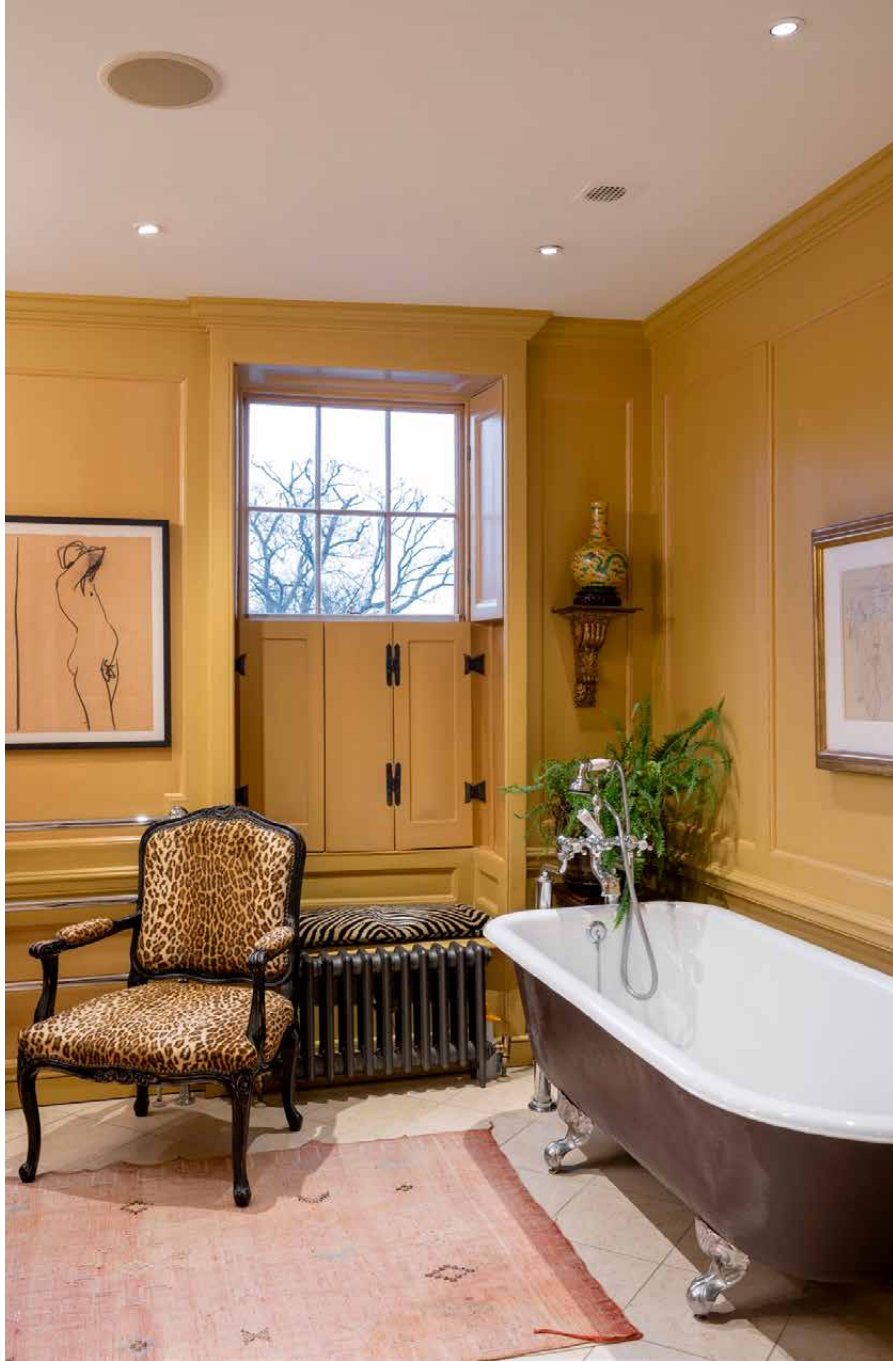
The kitchen is more contemporary in finish, opening onto a vaulted conservatory that doubles as an informal breakfast room. There's plenty of space for experimentation, with an impressive culinary lineup at your disposal – notably the imposing Lacanche range cooker. A more formal dining room sits adjacent, kitted out with a circular table, red upholstered chairs and an ornate chandelier.



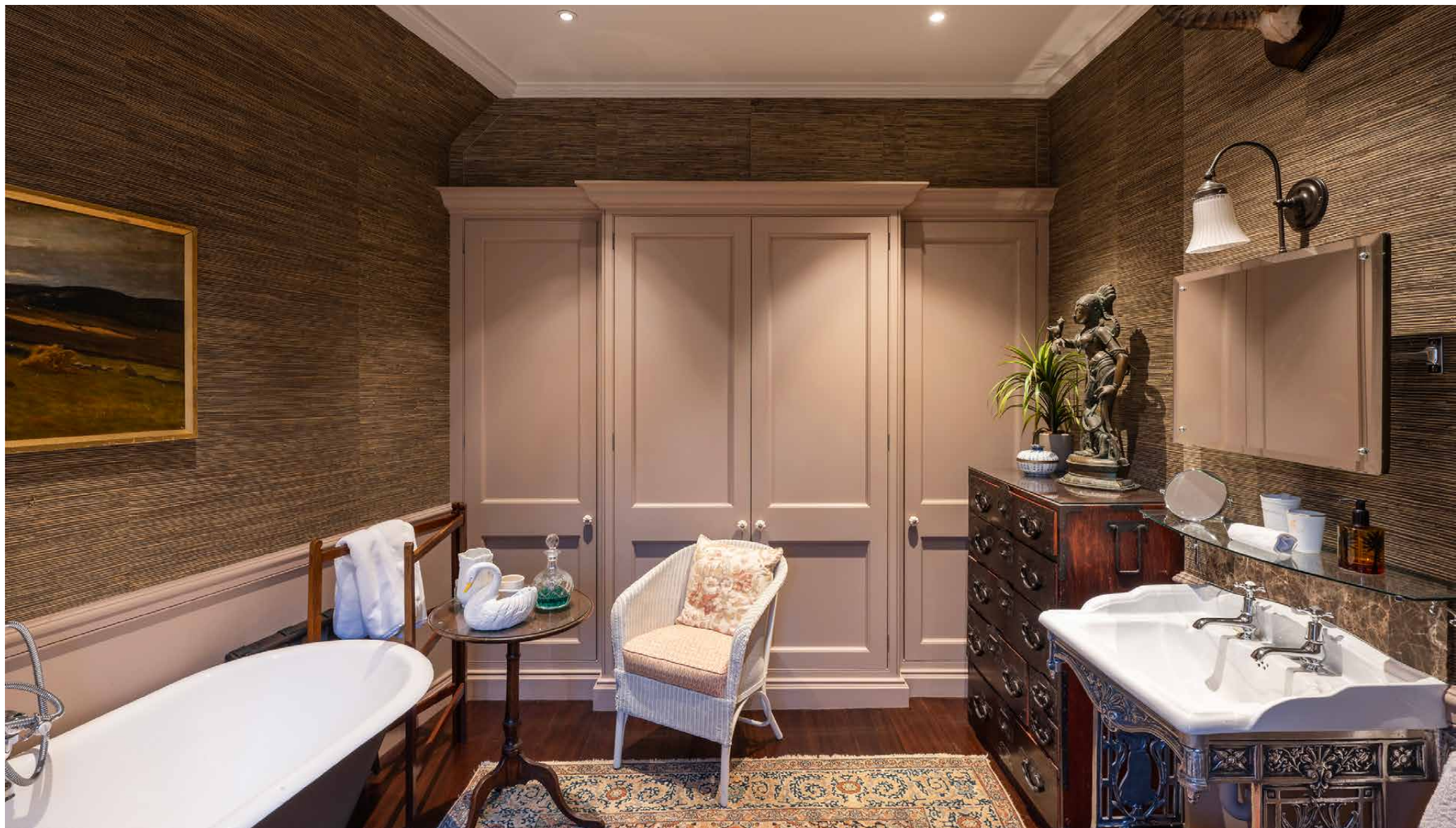


Bedrooms & bathrooms

Rich mustard tones bring a soothing feel to the principal bedroom suite, complete with a huge en suite bathroom that features a rolltop bath. Two guest bedroom suites are similarly conducive to switching off – one is elevated by wainscoting and the addition of a regal four poster bed.









Outdoor space

Outside, the large garden is as grand in feel as it is in size. Designed by creative landscape studio Butter Wakefield and spanning 98ft with a pavilion at the far end, it offers an idyllic pocket of peace.

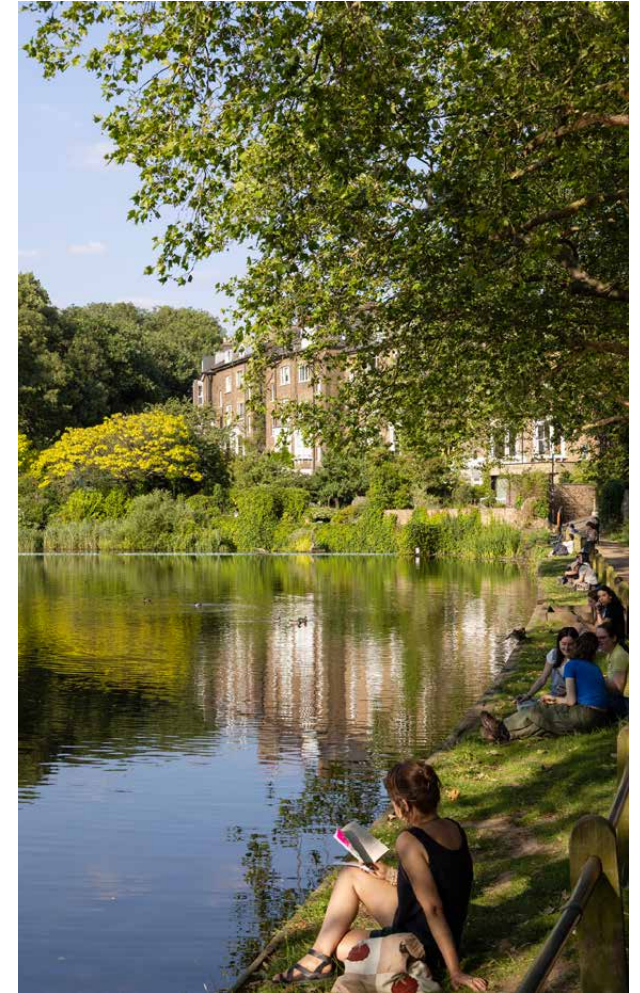


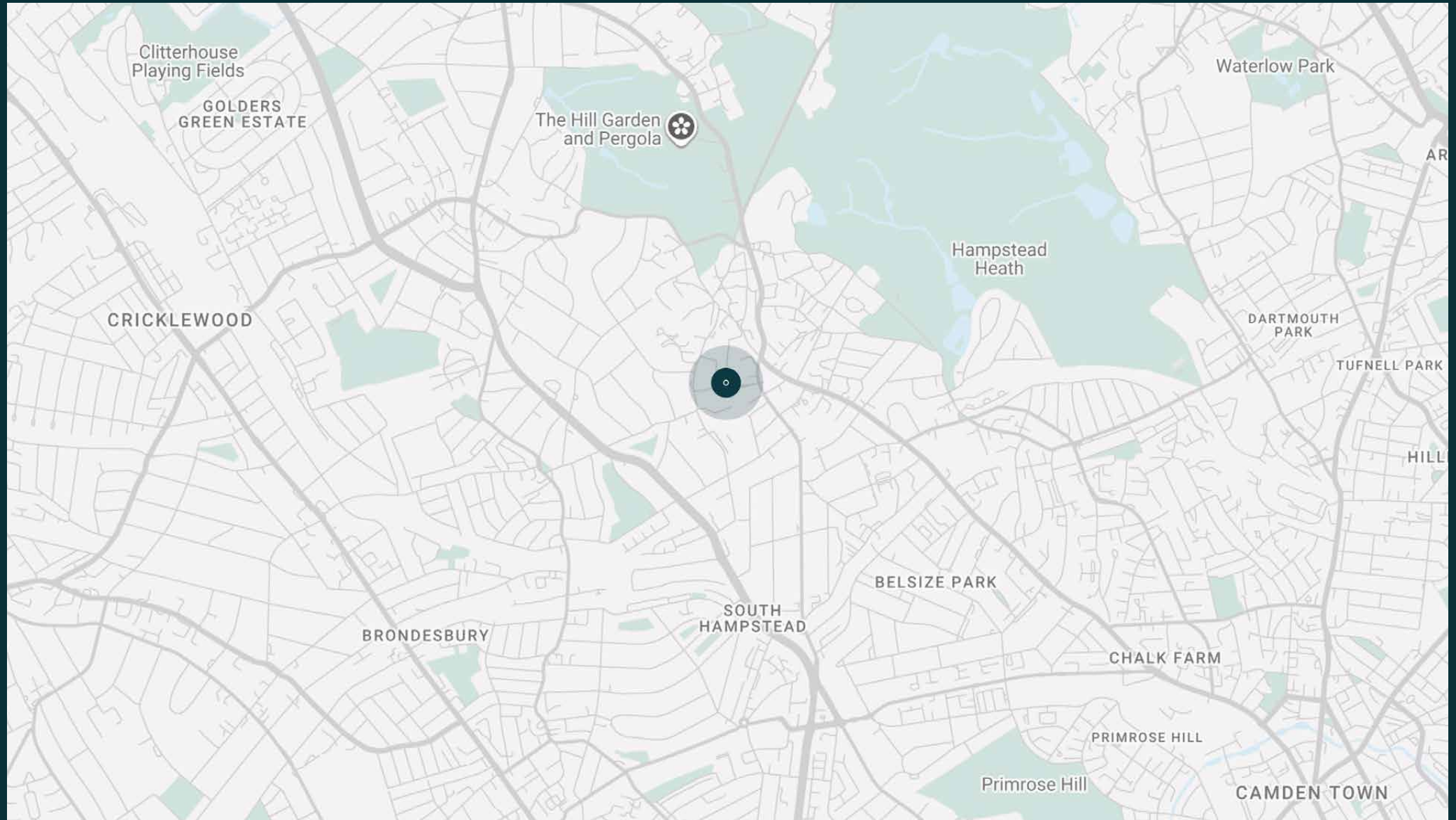


The neighbourhood

Hampstead is all about its Heath. Some 800 acres of wild green space, it's a place to press pause close to the heart of the city.

Ramble up to Parliament Hill viewpoint for an unbeatable vantage point over London or brave a dip in one of the heath's outdoor bathing ponds. Reward your efforts with baked goods from Ginger & White followed by a wander through the cobbled streets of Hampstead Village and a drink at the Holly Bush. The neighbourhood certainly isn't short of excellent pubs – right on the doorstep you'll also find The Duke of Hamilton, home to the Hampstead Jazz Club. As you'd expect from such a storied neighbourhood, historic landmarks are also plentiful. Explore Fenton House and Garden, Keats House and Burgh House, or keep an eye out for the more than 50 blue and brown plaques that commemorate former famous residents. When you want to explore the rest of the city, hop on the Northern line or the Overground.





Property features

- Interior design by Colefax and Fowler
- Striking Grade II listed townhouse dating back to the 1700s
- Preserved period features throughout
- Double reception room and dining room
- Additional reception room/ library
- Contemporary kitchen with breakfast room conservatory
- Utility room
- Music and media room
- Study
- Principal bedroom suite
- Two further bedroom suites
- Family bathroom
- Expansive landscaped garden by Butter Wakefield
- Cloakroom
- Car parking on street for one vehicle
- Peaceful Hampstead setting

Approx. 388 sq m / 4,179 sq ft



Approx. Gross Internal Area = 4,179 sq ft / 388.2 sq m

Floor plans are for illustrative purposes only and not to scale. Compliant with RICS code of measuring practice.

Guest & concierge services

Our concierge team are here to help guests settle in, seamlessly. Centre court tickets to Wimbledon, Premier League seats with the best views, Savile Row tailors on standby, or a private chef to cater to individual tastes – we aim to elevate every stay.

From the moment of booking with us, each guest has a single point of contact to finesse the details. Our statement spaces are just the starting point – to ensure everyone feels at home, our rates include:

- Weekly housekeeping
- Flexible check-in/out
- Luxury linens and Bamford toiletries
- Legal compliance on all our homes
- A personal welcome and arrival essentials
- Unlimited access to guest services and tailored experiences
- Professional inventory inspection before and after every stay
- Access to a curated portfolio of sole agency properties



domus stay.

Please get in touch if you have any questions
or require any further information.

hello@domusstay.com

+44 (0)20 8168 8880

The property particulars are a guide not statements. Descriptions, photographs, and plans are for guidance only. The Property is offered "subject to contract and references". No warranties, representations, License or Tenancy is given by Domus Stay. Our full disclaimer together with trading names and our Privacy Policy is shown on our website

© Domus Stay 2025. All rights reserved.

