



---

# Golborne Road

North Kensington W10

2 Bedrooms, 2 Bathrooms  
For 4 guests

---





Crafted by renowned local studio Golborne 44, this two-bedroom duplex on bohemian Golborne Road pairs style and simplicity.

Moments from Trellick Tower, Ernő Goldfinger's lasting tribute to brutalism, a design-led home wears a similarly iconic look. Behind a monochromatic white façade, this urban retreat is the pinnacle of inverted living.

The generous top-floor living area speaks of ecclesiastic influences. Arched doorways take notes from a church-turned-yoga-studio on the same road, Love Supreme Projects. Beyond, a quiet, rear-facing terrace is ideal for yoga or Pilates.

Four skylights pour natural light through the vaulted ceiling into the space. Neutral tones and restrained interior design, courtesy of Golborne 44, produce an uplifting atmosphere. Completely bespoke, the kitchen's Arabescato rose marble worktops unite a Smeg hob, Abode sink and Studio Ore tap. Smooth micro-cement flooring flows into a comfortable living area. A sanctum of pared-back modernism, this space features Charlotte Perriand wall lights and an original 1970s Mario Bellini sofa.





The L-shaped roof terrace is perfect for early morning exercise or drinks with friends.



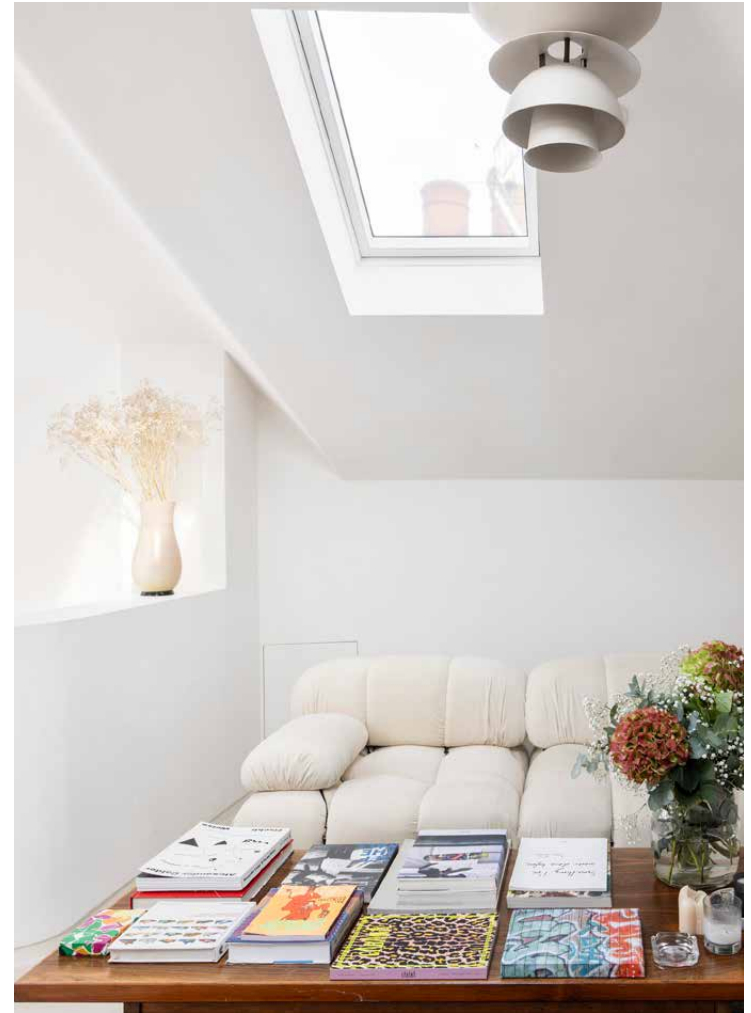
“

Behind a monochromatic white façade, this urban retreat is the pinnacle of inverted living.

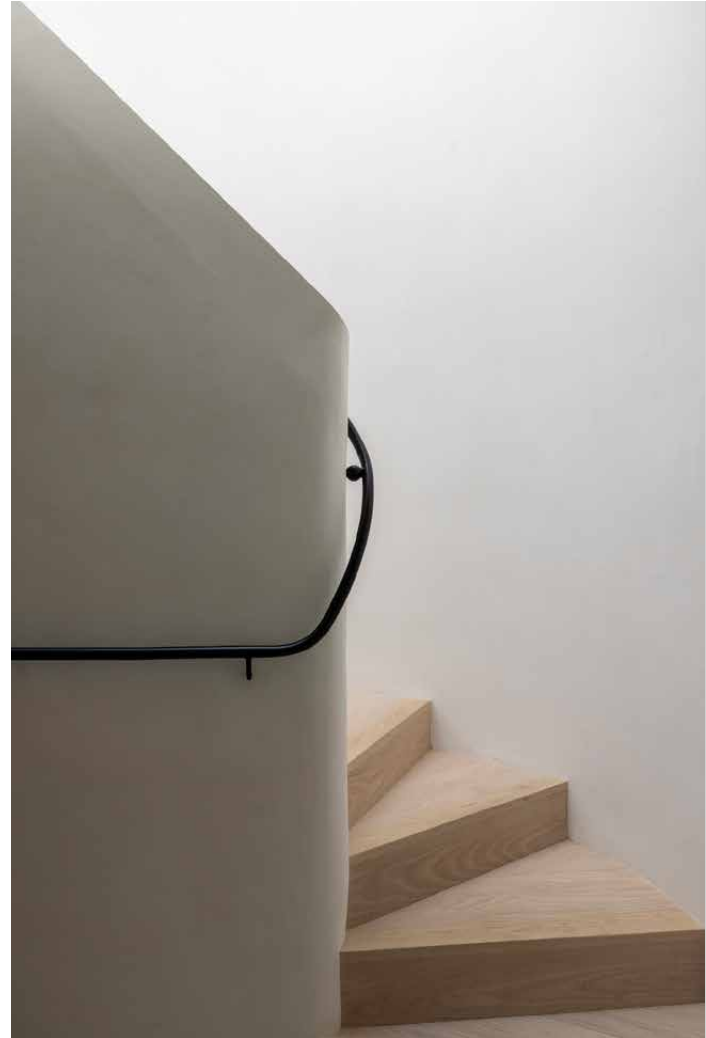














A curving staircase with ash wood treads leads down to two peaceful sleeping quarters. Recalling the aesthetic of the upper floor, the principal bedroom features matte walls and an Arabescato rose marble bedhead. A contemporary en suite enjoys Zellige tiles by Bert & May and The Watermark Collection brassware. The guest bedroom places form with function, with integrated storage, natural light and calming tones and textures. Its en suite bathroom pairs a hand-crafted basin with a walk-in rainfall shower.

















## LOCATION

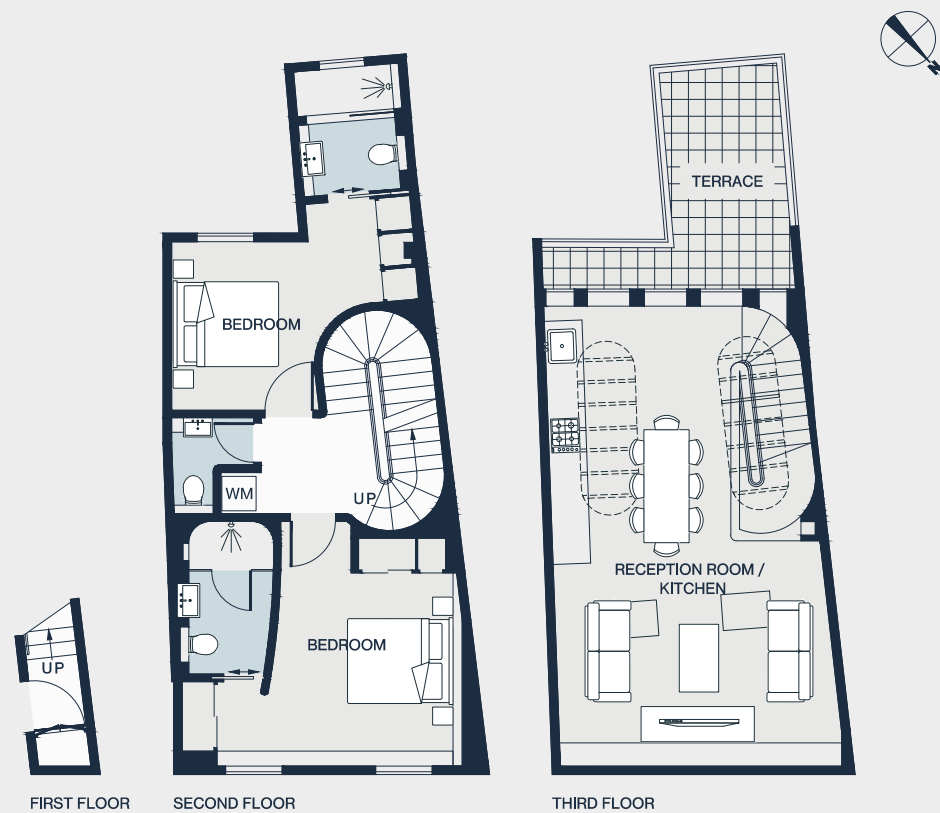
Golborne Road is a vibrant street famed for its antiques, vintage fashion and food spots including Golborne Deli, Panella and Lisboa Patisserie.

New dining options, such as Caia and Straker's, have recently joined the neighbourhood. For leafy walks, amble to Athlone Gardens or Emslie Horniman's Pleasance Park. Don't miss the bars and boutiques on Portobello Road. Head for the pastel-toned streets of Notting Hill, catch a show at the Tabernacle Theatre and walk home after a meal at fine dining institution The Ledbury.



### PROPERTY HIGHLIGHTS

- Interior design by Golborne 44
- Open-plan kitchen, dining and reception room
- Principal bedroom suite
- Guest bedroom suite
- Roof terrace
- Guest cloakroom
- Integrated storage
- Royal Borough of Kensington & Chelsea



#### RECEPTION / KITCHEN

26'9 x 16'5 (8.1m x 5.0m)

#### BEDROOM

16'3 x 14'4 (4.9m x 4.3m)

#### BEDROOM

14'3 x 9'10 (4.3m x 3.0m)

Approx. Gross Internal Area = 984 sq ft / 91.5 sq m

Floor plans are for illustrative purposes only and not to scale. Compliant with RICS code of measuring practice. Furniture layouts are indicative only. This property may be furnished, part-furnished or unfurnished. Please refer to your agent for details.



Please don't hesitate to get in touch  
if you have any questions or require  
any further information.

---

[hello@domusstay.com](mailto:hello@domusstay.com)

+44 (0)20 8168 8880

Domus Stay provides the perfect combination of property, place and personal service for the world's most remarkable people. If you have any questions, or if we can help in any way, please contact us on the above number. Be it about a property you have, a property you want, dates to check or any special requirements you may need, we'd love a chat.

