

domus
stay.

Elgin Crescent IV

NOTTING HILL W11

2 Bedrooms, 2 Bathrooms
For 4 guests





This flawlessly-crafted, two-bedroom duplex apartment to rent pays homage to Parisian design.

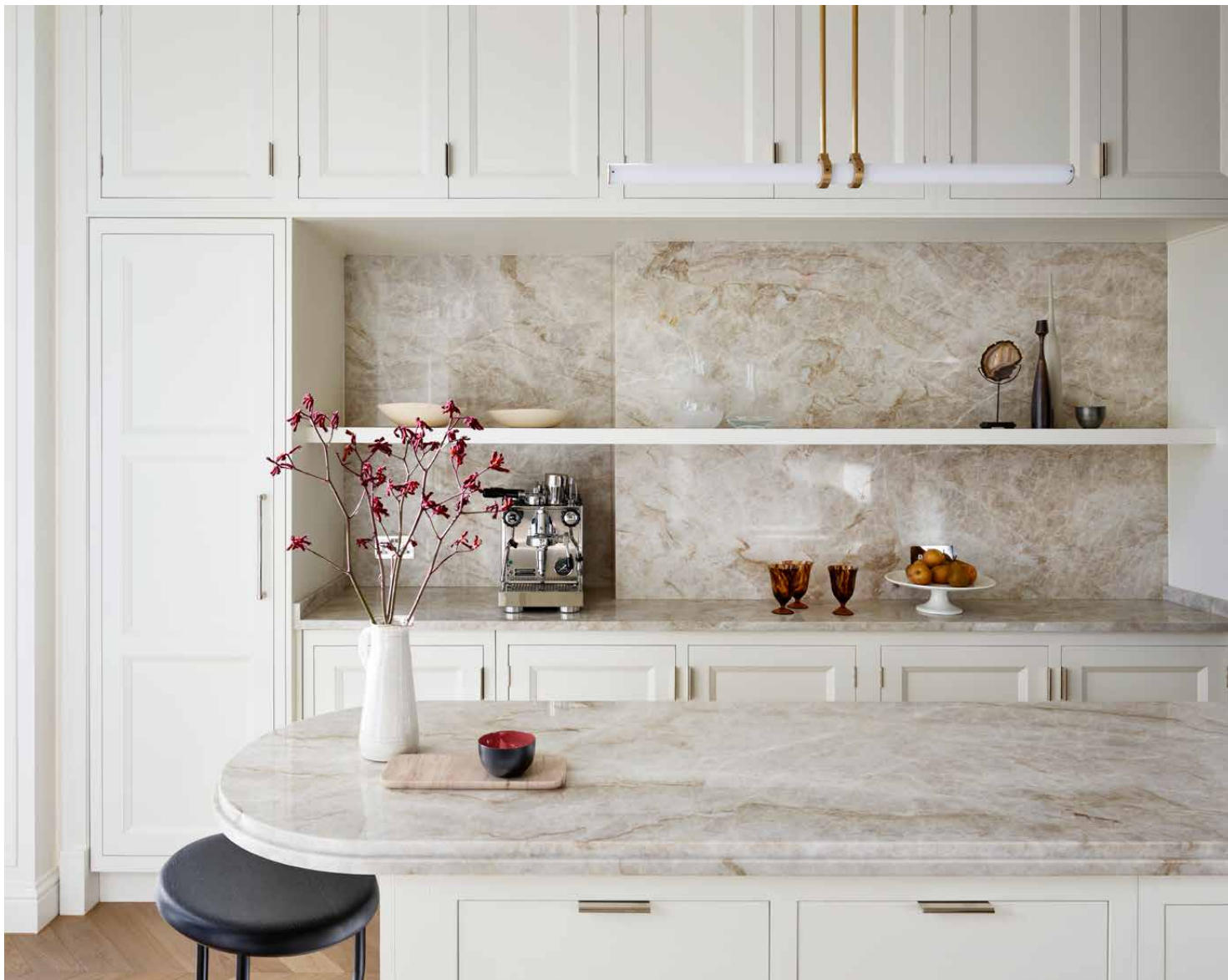
On one of Notting Hill's most admired residential crescents, two derelict apartments in a stucco-fronted townhouse were masterfully transformed into a luxury two-bedroom duplex.

The living spaces

As soon as you enter, the voluminous 3.5 metre-high ceilings and reams of natural light set a relaxing feel in motion. On the first floor, the open-plan kitchen, dining and reception room is sleek in design and welcoming in atmosphere. Smoked oak chevron floors draw you into the space, which is beautifully illuminated through dual-aspect windows. There's an air of Parisian elegance drawn with the natural colour palette, floor-to-ceiling curtains and refined furnishings: an inviting Maxalto sofa and eye-catching Budri Origami coffee table are positioned by the marble fireplace, while a sculptural Naama Hoffman light is suspended overhead.



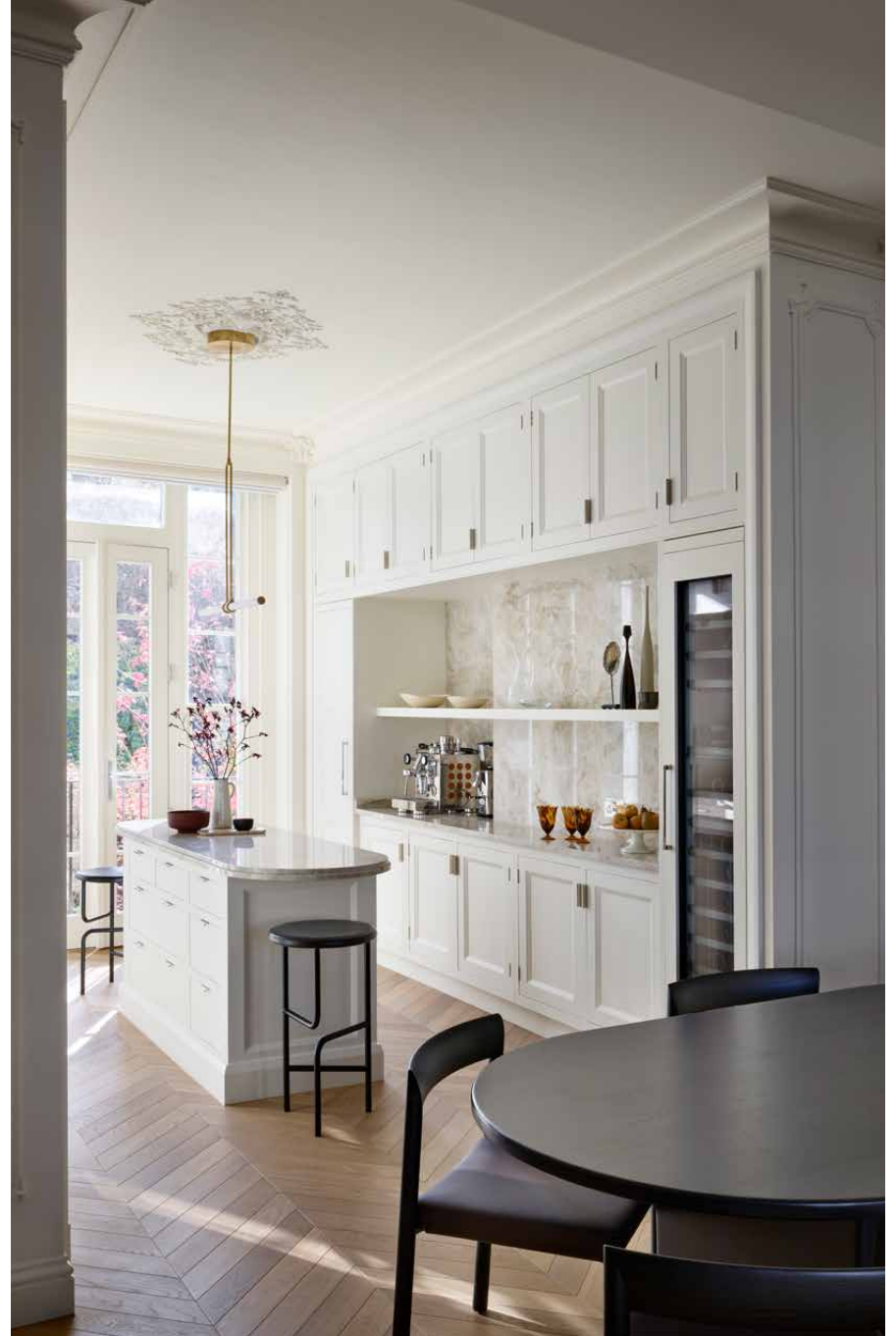


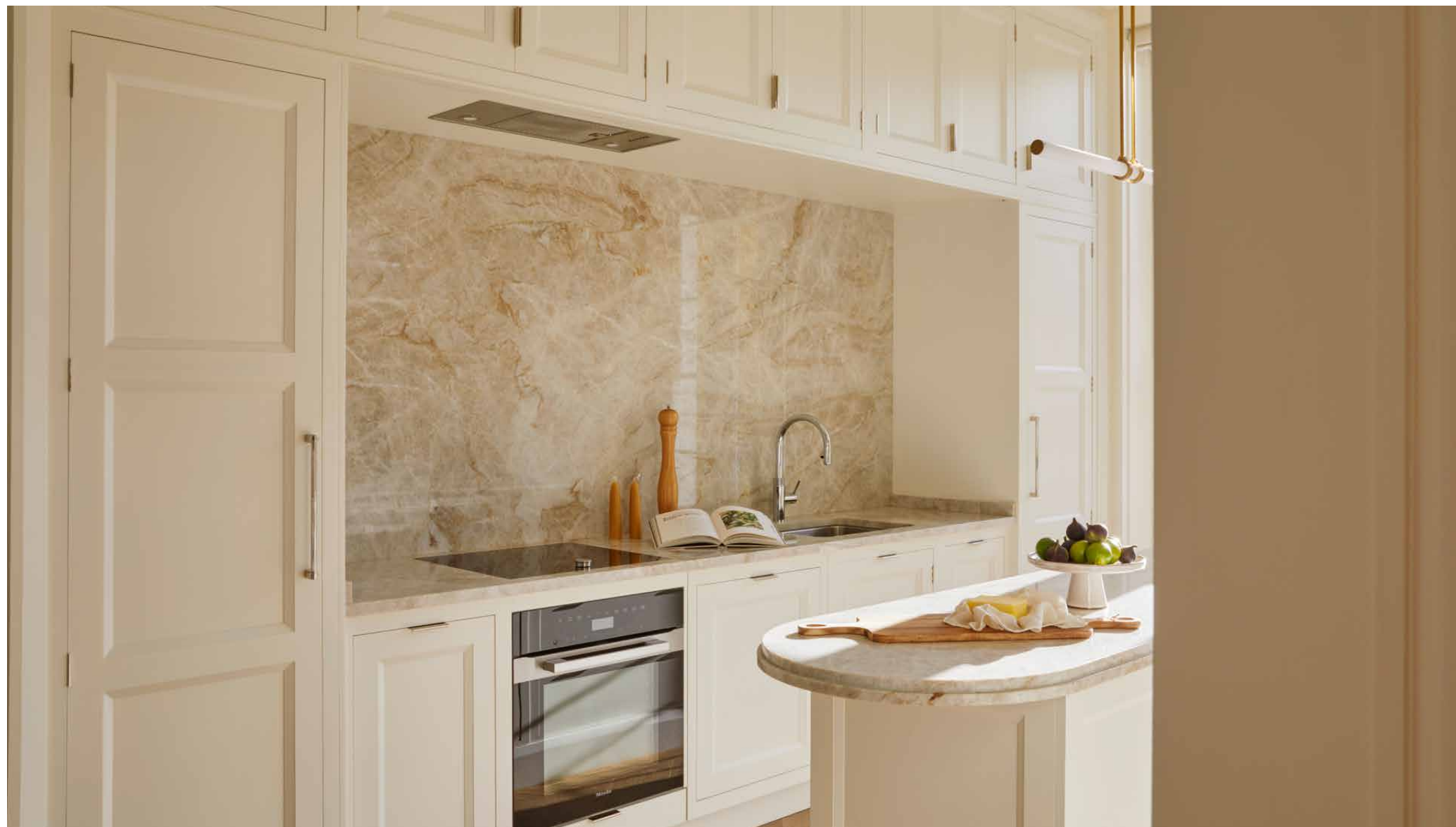


The kitchen

An artisanal walnut dining table separates the living and cooking spaces. Beyond here, the bespoke Martin Moore kitchen is a masterstroke of modern design. Centering the space is a lozenge-shaped island, topped with double-bevelled edged marble. To either side, Taj Mahal Quartzite countertops add a lustrous quality, complete with integrated Gaggenau, Miele and Quooker appliances. Mornings are easy with the Rocket Italy coffee machine, while the wine fridge makes for breezy entertaining, come evening time. French windows open onto a Juliet balcony, overlooking verdant communal gardens — which residents have access to.







In keeping with the entire property, a Deco-inspired staircase is a sublime point of architectural engineering. It ascends in one sweeping curve, complete with a floating oak handrail. Beneath the stairs, there are handleless panels that conceal spacious storage areas.



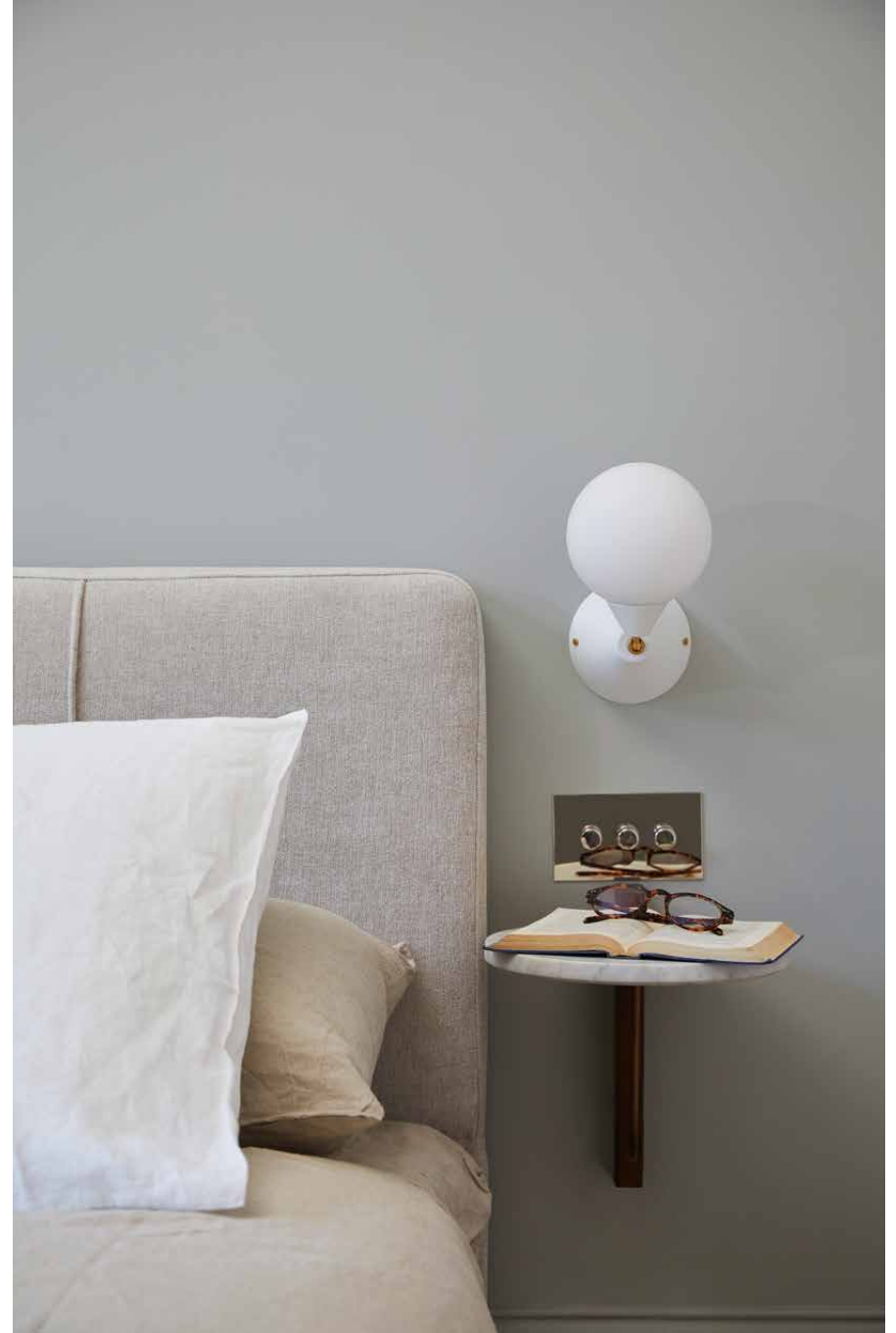
Bedrooms and bathrooms

Upstairs, two bedrooms set a new standard for interior sophistication and relaxation. In the principal suite, a Bocci cluster pendant chandelier and bespoke LED-lit wardrobes make a feature of the room's three-metre period proportions. The Naturalmat bed is paired with sustainable linens and sits on an organic wool rug. Next door, the bathroom is an awe-inspiring setting. The vanity unit features mushroom marble and corrugated-effect panelling to match the bedroom storage, complete with an oversized rainfall shower. The secondary bedroom is drawn with a muted blue colour and a walnut desk, complemented by the same sustainably-minded bedding and LED-lit wardrobes as the principal. It's served by an additional bathroom, featuring a contemporary bathtub perfect for long soaks.











The design

Thanks to the innovative eye of interior designers Studio Mae, this home strikes a harmonious balance between period and contemporary styling, filled with bespoke furniture and state-of-the-art technology. With wellness and serenity at the core of its renovation mission, Elgin Crescent is the ultimate sanctuary for a city escape.

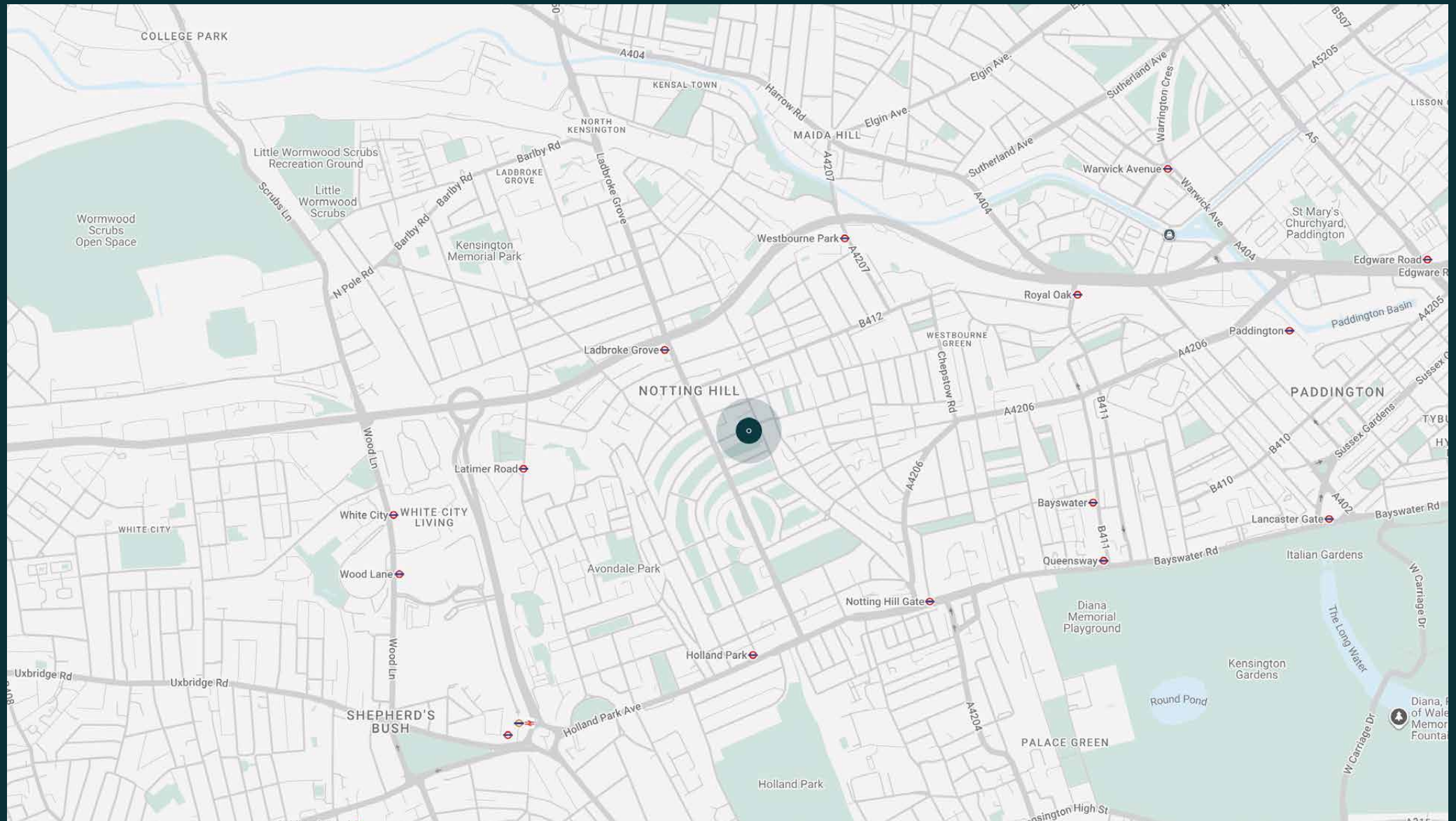
Note the immaculately-crafted wall mouldings, cornicing and ceiling rosettes — a feat of architectural prowess by French decorators Auberlet et Laurent. Demonstrating the home's commitment to sustainability, non-toxic Farrow & Ball paint has been used throughout.

The neighbourhood

Elgin Crescent is the elegant stepping stone to this coveted West London neighbourhood.

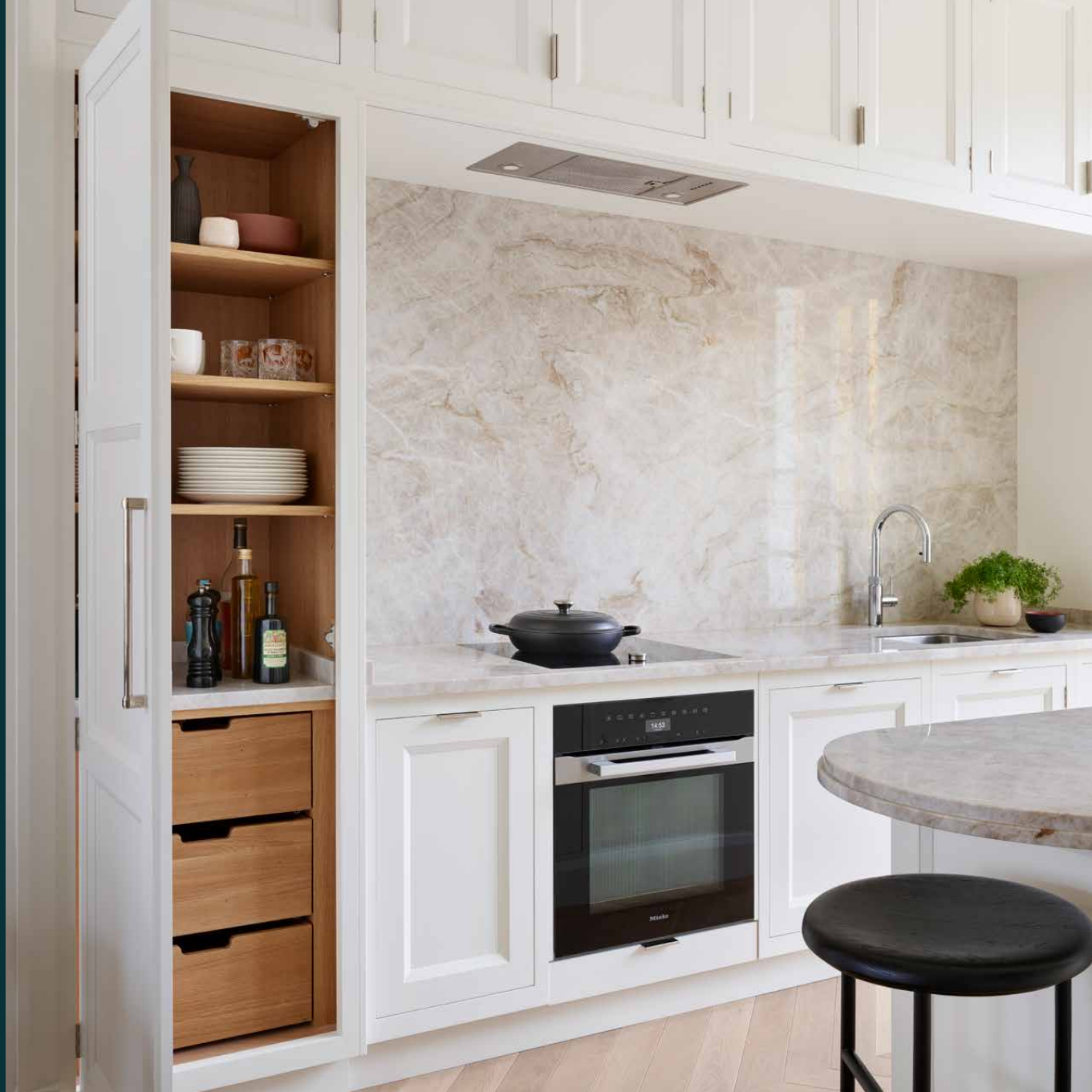
Immerse yourself in the fabric of Notting Hill along Portobello Road – the iconic market street that's lined with vintage boutiques and global food stands. There are plenty of wellness spots to explore, from SoulCycle to Bodyism and Barrecore. Westbourne Grove is your go-to for brunch and high-end retail therapy, while organic groceries can be sourced from Daylesford and Notting Hill Fish + Meat Shop. For special occasions, Michelin-starred Core by Clare Smyth is just moments from your doorstep.





Property features

- Interiors designed by Studio Mae
 - Open-plan kitchen, dining and reception room
 - Principal bedroom suite
 - Guest bedroom
 - Additional bathroom
 - Juliet balcony
 - Access to communal gardens
 - Period features
 - Royal Borough of Kensington and Chelsea
-



Guest & concierge services

Our concierge team are here to help guests settle in, seamlessly. Centre court tickets to Wimbledon, Premier League seats with the best views, Savile Row tailors on standby, or a private chef to cater to individual tastes – we aim to elevate every stay.

From the moment of booking with us, each guest has a single point of contact to finesse the details. Our statement spaces are just the starting point – to ensure everyone feels at home, our rates include:

-
- Weekly housekeeping
 - Flexible check-in/out
 - Luxury linens and Bamford toiletries
 - Legal compliance on all our homes
 - A personal welcome and arrival essentials
 - Unlimited access to guest services and tailored experiences
 - Professional inventory inspection before and after every stay
 - Access to a curated portfolio of sole agency properties





Please get in touch if you have any questions
or require any further information.

hello@domusstay.com

+44 (0)20 8168 8880

The property particulars are a guide not statements. Descriptions, photographs, and plans are for guidance only. The Property is offered "subject to contract and references". No warranties, representations, License or Tenancy is given by Domus Stay. Our full disclaimer together with trading names and our Privacy Policy is shown on our website

© Domus Stay 2025. All rights reserved.

