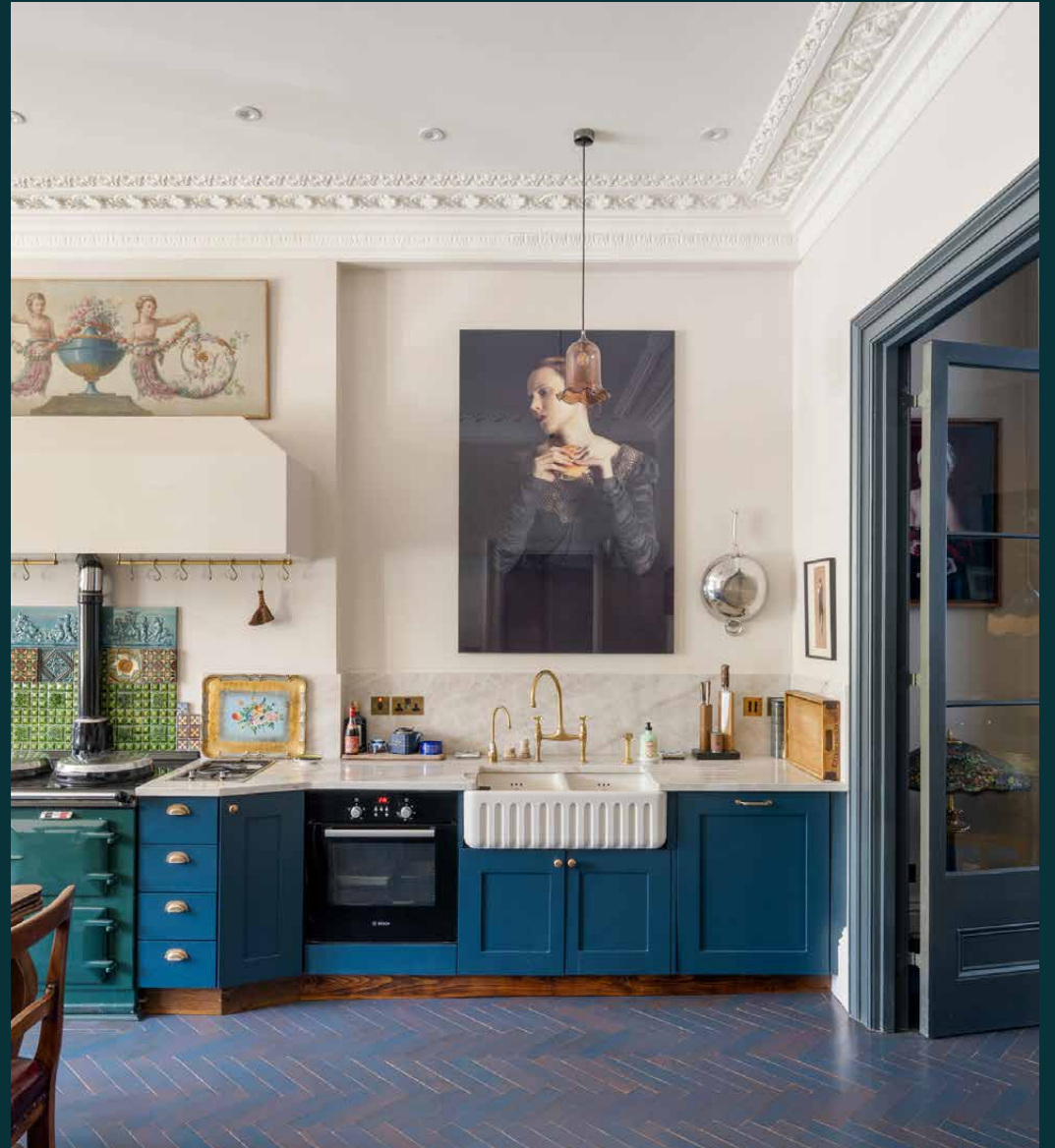


domus
stay.

Eccleston Square

BELGRAVIA

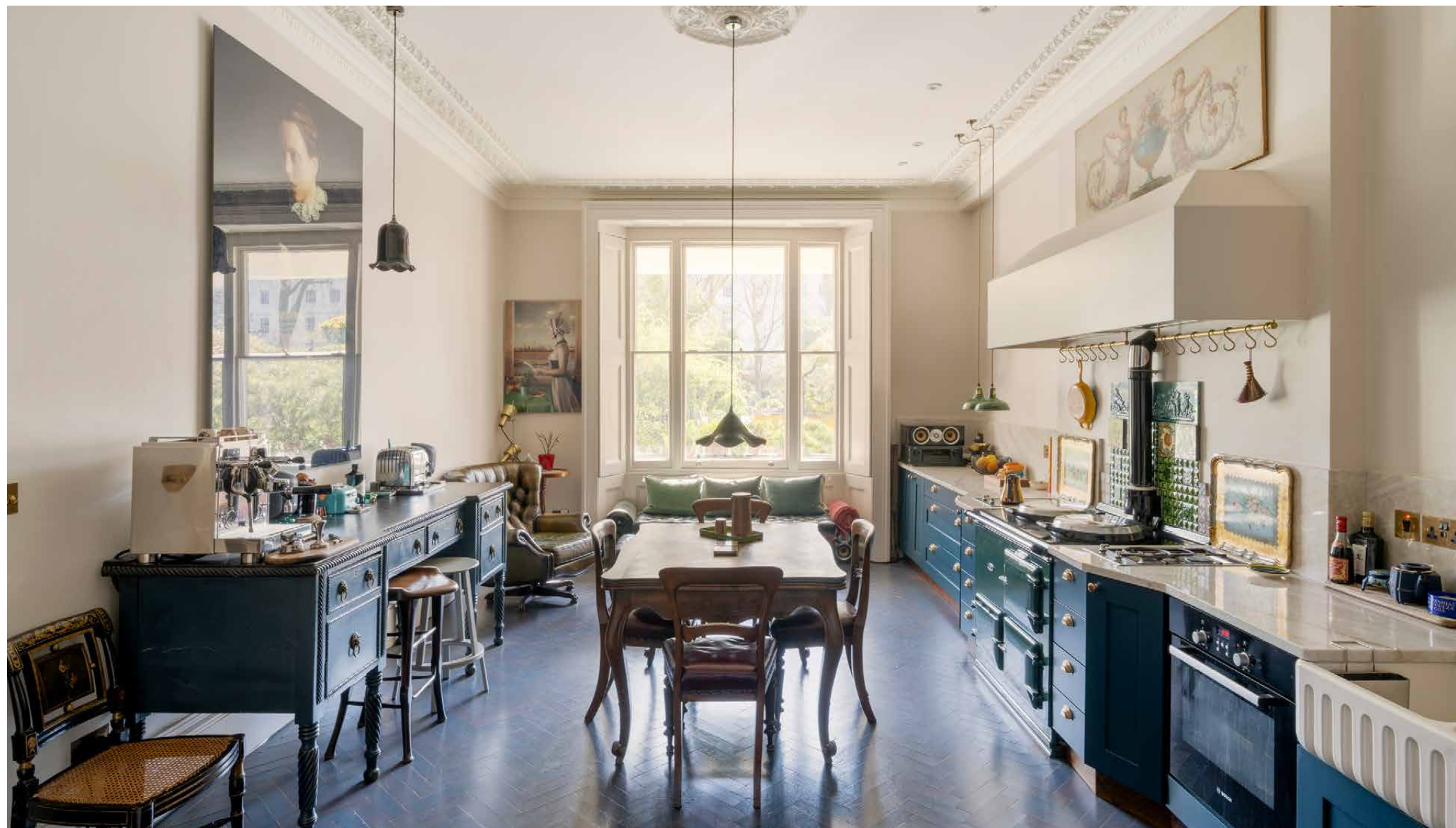
4 Bedrooms, 3 Bathrooms
For 8 guests





A gallery of inspiring design. Spread across five spacious floors, this townhouse to rent is a picture of elegant eccentricity.

Nestled in the heart of Belgravia, this sophisticated four-bedroom family townhouse effortlessly combines elegance and contemporary flair – with beautifully-designed spaces that are perfect for socialising and switching-off.



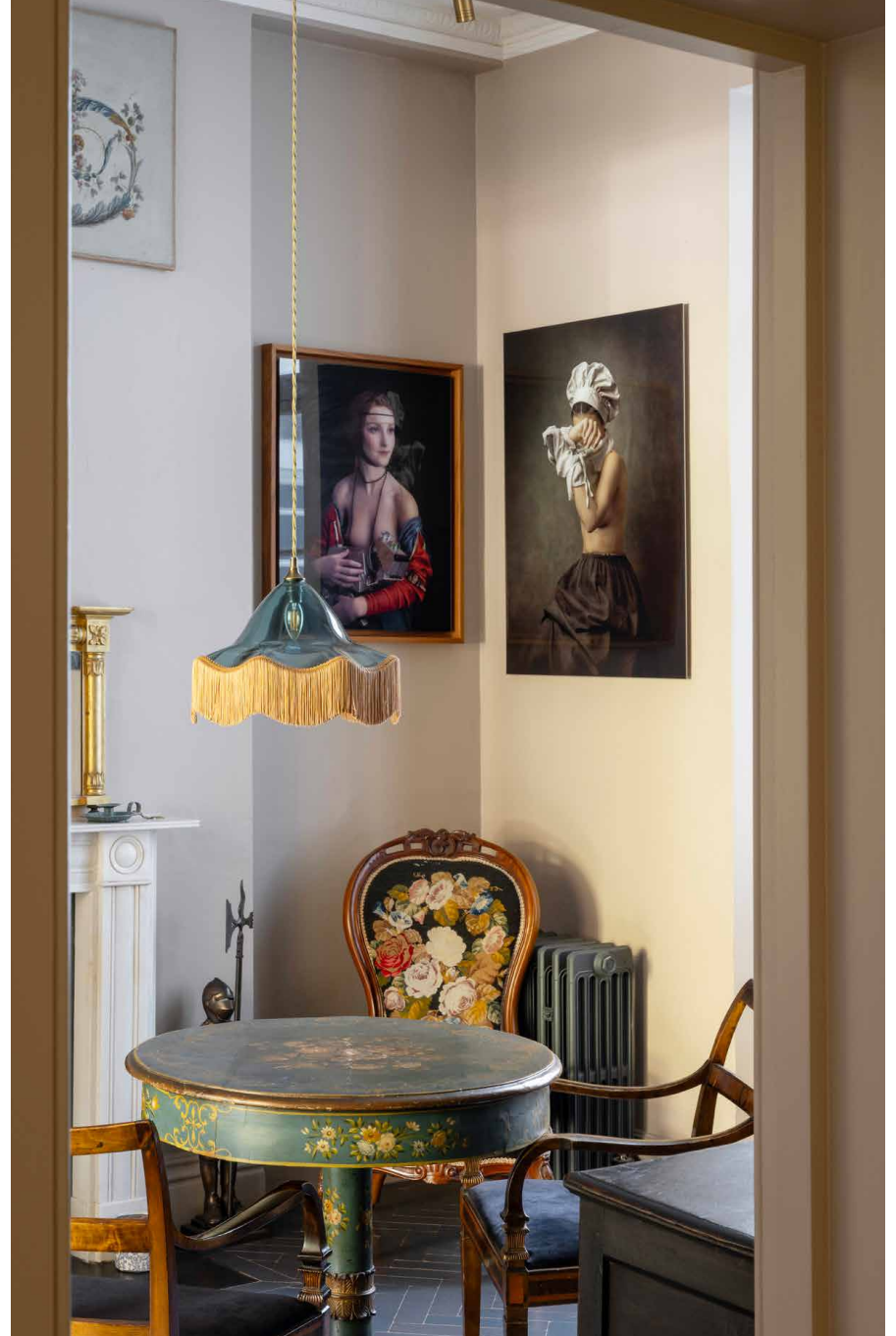


Kitchen & dining

The home's entrance hallway makes an inviting first impression, with geometric tiles and colourful glass lighting—an atmosphere that continues into the kitchen. Bathed in sunlight from a large bay window, there's a thoughtful interaction between traditional and eclectic here. Indigo herringbone tiles stretch across the floor, while royal blue cabinetry frames either side of the space. Choose from two stoves: an electric Bosch oven or the teal-toned AGA, the latter of which lends a country-pile feel to the setting. Through double glass doors, a relaxed breakfast room is furnished with floral-patterned antiques.













Living spaces

Upstairs, social life continues in the expansive reception and dining room. While the ornate cornicing, marble fireplace and gold-framed oil paintings offer a heritage feel, there's a contemporary edge drawn with the relaxed green leather sofa and contemporary portraiture. Swing open the French windows to reveal the private terrace, which overlooks the leafy communal gardens. Beyond the formal dining area, there's a meditative reading nook set against floor-to-ceiling glazing.

If work calls, there are three tranquil office spaces to choose from. After you've clocked off for the day, spend some time in the private gym with its selection of beautifully-crafted equipment – including a boxing pad, gymnastic bar and walking pad. To stretch your legs a little further, there's the grassy lawns of Eccleston Square's communal gardens to explore.







Bedrooms & bathrooms

Serene and sophisticated, the principal bedroom suite is the place in which to press pause. Pale pink walls set a calming ambiance for the velvet green upholstered bed and painted screen, while natural light gently filters through two sash windows. Head through a handsome dressing room into the en suite bathroom, where a copper-toned freestanding bath takes centre stage.

Three guest bedrooms are spread across the home's upper storeys, each designed with a classic-meets-contemporary look. They're served by two guest bathrooms, both featuring an array of colourful tiling, gilded hardware and relaxing showers.



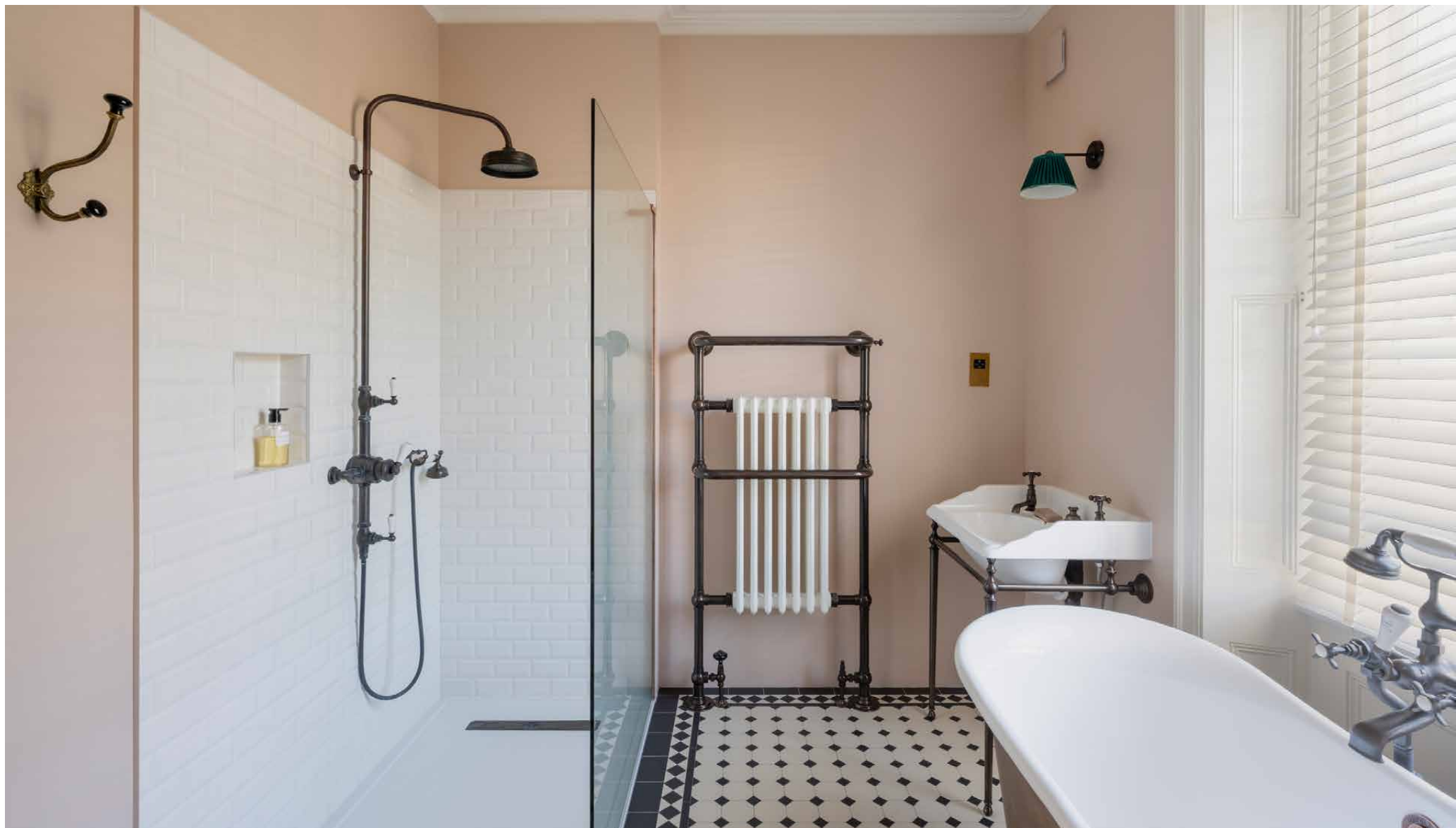


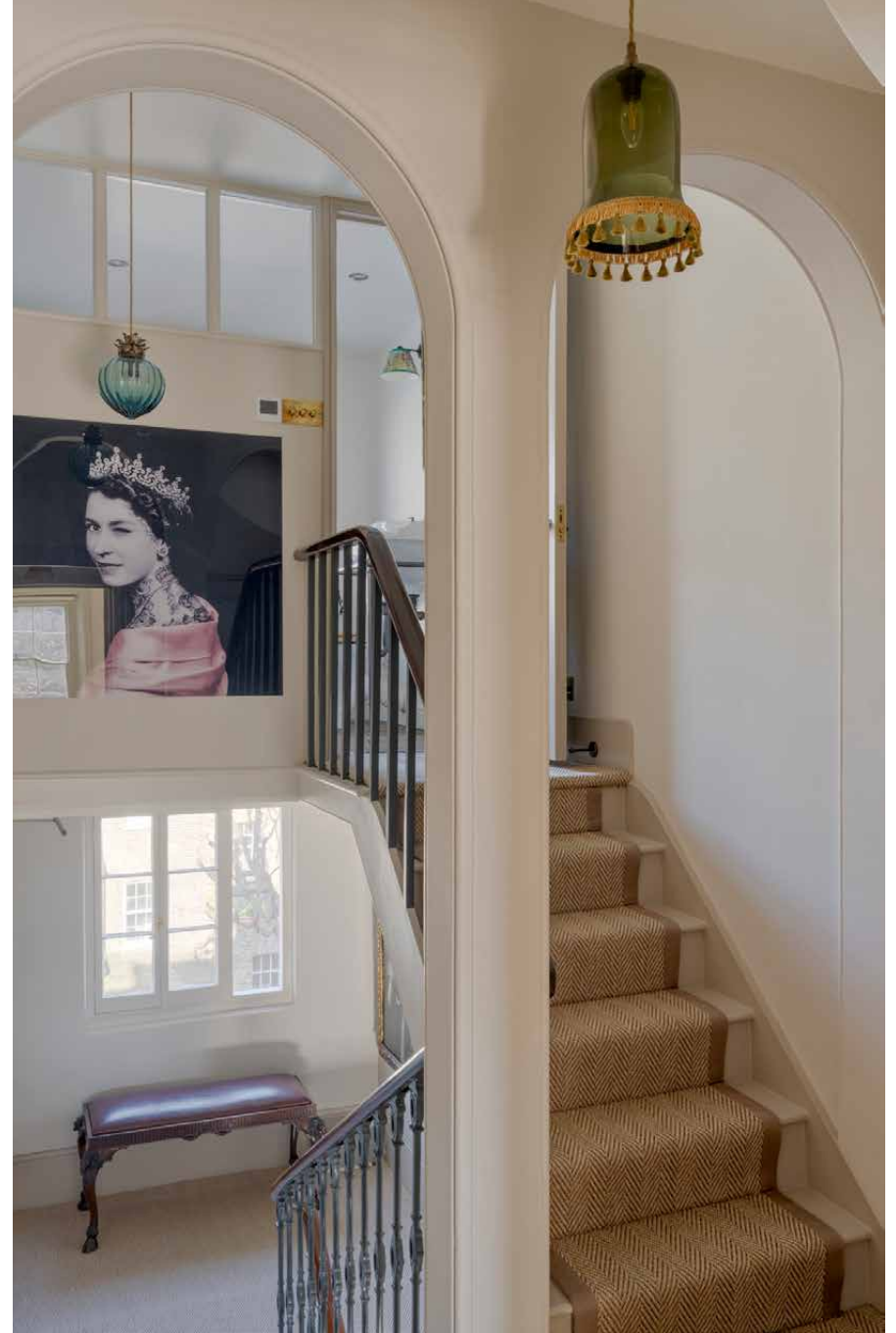


“Serene and sophisticated, the principal bedroom suite is the place in which to press pause.”











Outdoor spaces

Beyond the home's private terraces, guests can enjoy access to Eccleston Square's communal gardens – complete with flower beds, mature trees and a tennis court.



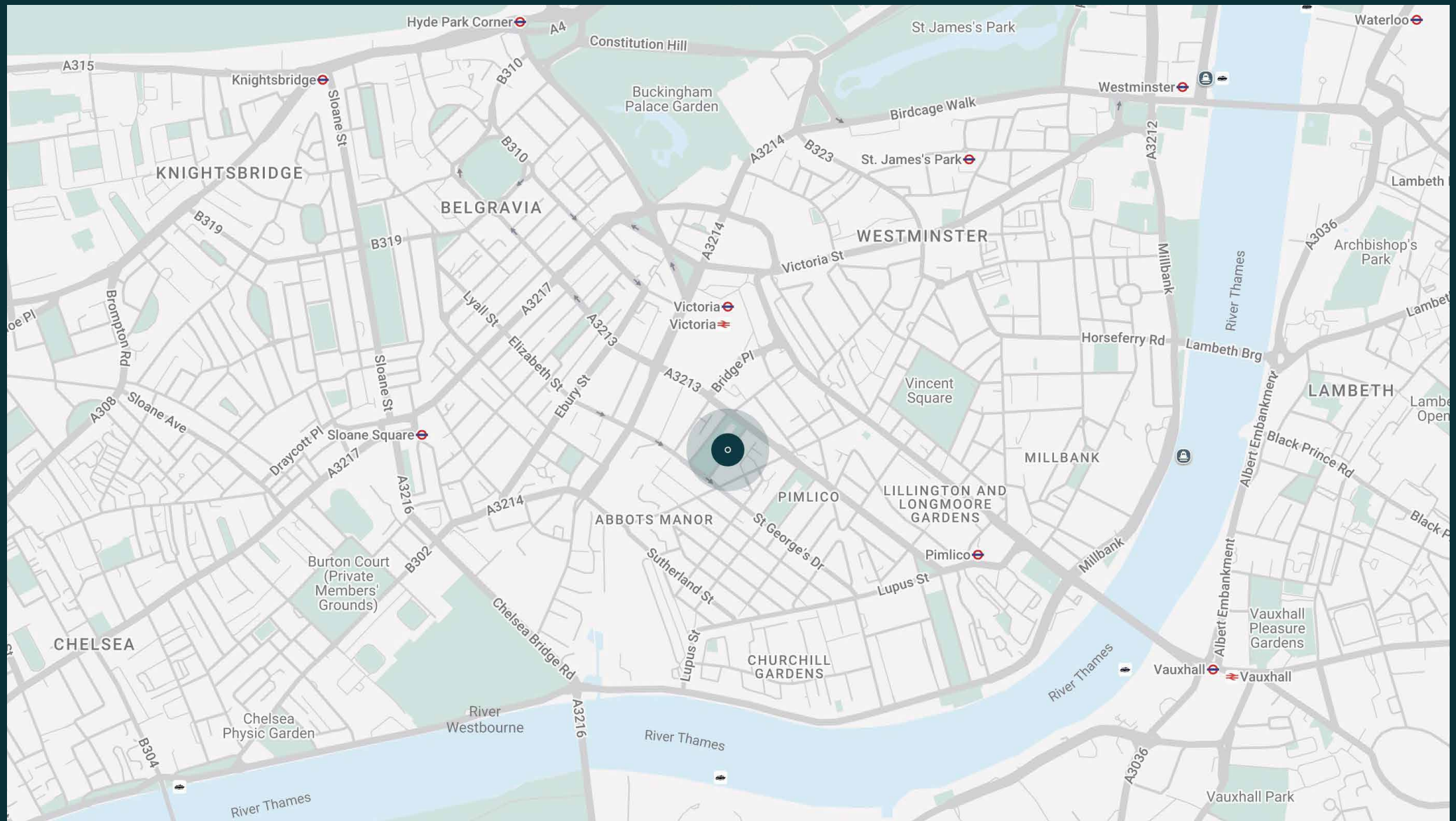


The neighbourhood

Caught between Pimlico, Belgravia and Westminster, Eccleston Square puts you in a prime location to explore Central London's varied offerings.

Immerse yourself in the inimitable department stores of Harvey Nichols and Harrods – world-class destinations for innovative fashion, state-of-the-art technology, and sumptuous artisanal produce – or venture to nearby Chelsea's upmarket high street, the King's Road. There's no shortage of sights for culture-seekers, with Buckingham Palace, Westminster Abbey, The Guards Museum and Tate Britain all within a 20 minute walk. Plus, Victoria Station is on your doorstep for quick transport around the capital and beyond.

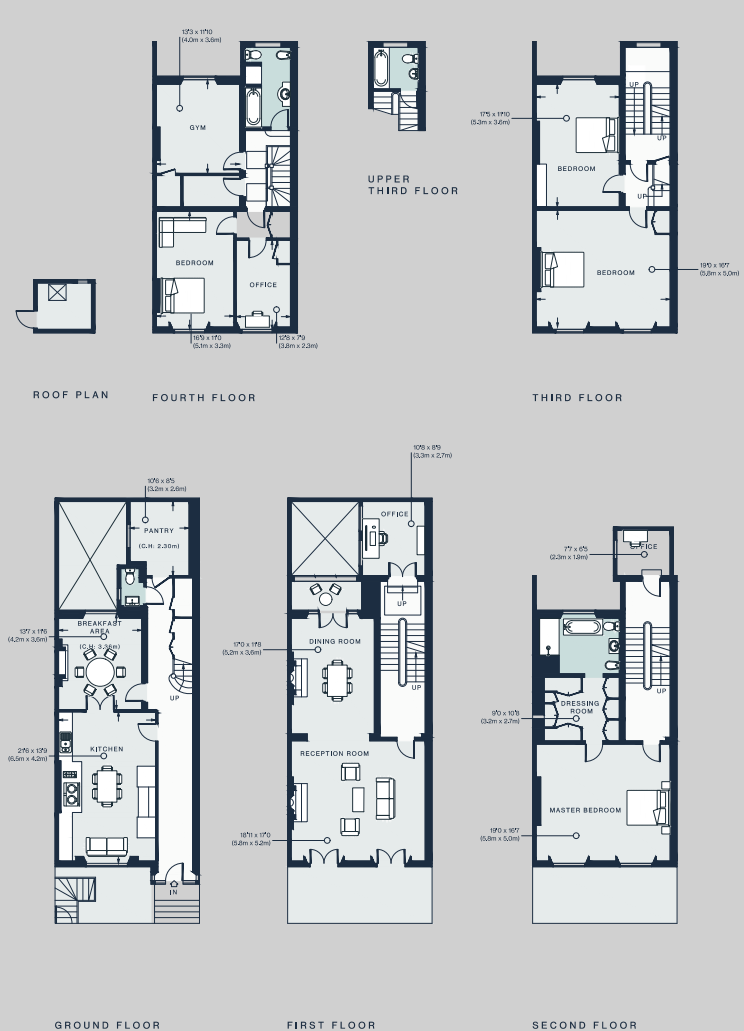




Property features

- Open-plan kitchen and breakfast room
- Open-plan reception and dining room
- Principal bedroom suite with dressing room
- Three guest bedrooms
- Two guest bathrooms
- Three offices
- Gym
- Pantry
- Terrace
- Access to communal gardens
- City of Westminster

Approx. 3,874 sq ft / 360 sq m



Approx. Gross Internal Area = 3,874 sq ft / 360.0 sq m

Floor plans are for illustrative purposes only and not to scale. Compliant with RICS code of measuring practice.

Guest & concierge services

Our concierge team are here to help guests settle in, seamlessly. Centre court tickets to Wimbledon, Premier League seats with the best views, Savile Row tailors on standby, or a private chef to cater to individual tastes – we aim to elevate every stay.

From the moment of booking with us, each guest has a single point of contact to finesse the details. Our statement spaces are just the starting point – to ensure everyone feels at home, our rates include:

-
- Weekly housekeeping
 - Flexible check-in/out
 - Luxury linens and Bamford toiletries
 - Legal compliance on all our homes
 - A personal welcome and arrival essentials
 - Unlimited access to guest services and tailored experiences
 - Professional inventory inspection before and after every stay
 - Access to a curated portfolio of sole agency properties





Please get in touch if you have any questions
or require any further information.

hello@domusstay.com

+44 (0)20 8168 8880

The property particulars are a guide not statements. Descriptions, photographs, and plans are for guidance only. The Property is offered "subject to contract and references". No warranties, representations, License or Tenancy is given by Domus Stay. Our full disclaimer together with trading names and our Privacy Policy is shown on our website

© Domus Stay 2025. All rights reserved.

