
Ebury Street

Belgravia SW1W

2 Bedrooms, 2 Bathrooms
For 4 guests





Refined and regal, this two-bedroom upper maisonette in Belgravia embodies all the defining qualities of its opulent

A polished façade sets the tone for this elegant upper maisonette. Inside, a subtle and sophisticated colour palette allows intricate period details to shine.

Set against a backdrop of cream hues, a matte black fireplace serves as the centrepiece in the open plan reception room. An intricately inlaid marble surround adds an air of regality, while high ceilings and gold fixtures create a Parisian-style ambiance. Splashes of canary yellow found in the soft furnishings and fitted shelving infuse a touch of sunshine. This is a space designed for lounging—bask in the light filtering through double French doors or relax on one of the sumptuous sofas. Leisurely dining takes place in the adjacent area – a large table provides ample space for family gatherings or entertaining.

Bright hues lift the kitchen upstairs, with vibrant orange contrasting a light blue splashback. Glossy white cabinets stand in sleek juxtaposition with black countertops and integrated appliances. On slow mornings, savour breakfast at the wooden table, or venture out from the quarter landing onto a tiled terrace where elegant townhouses provide a picturesque backdrop for morning coffees or late-night cocktails.



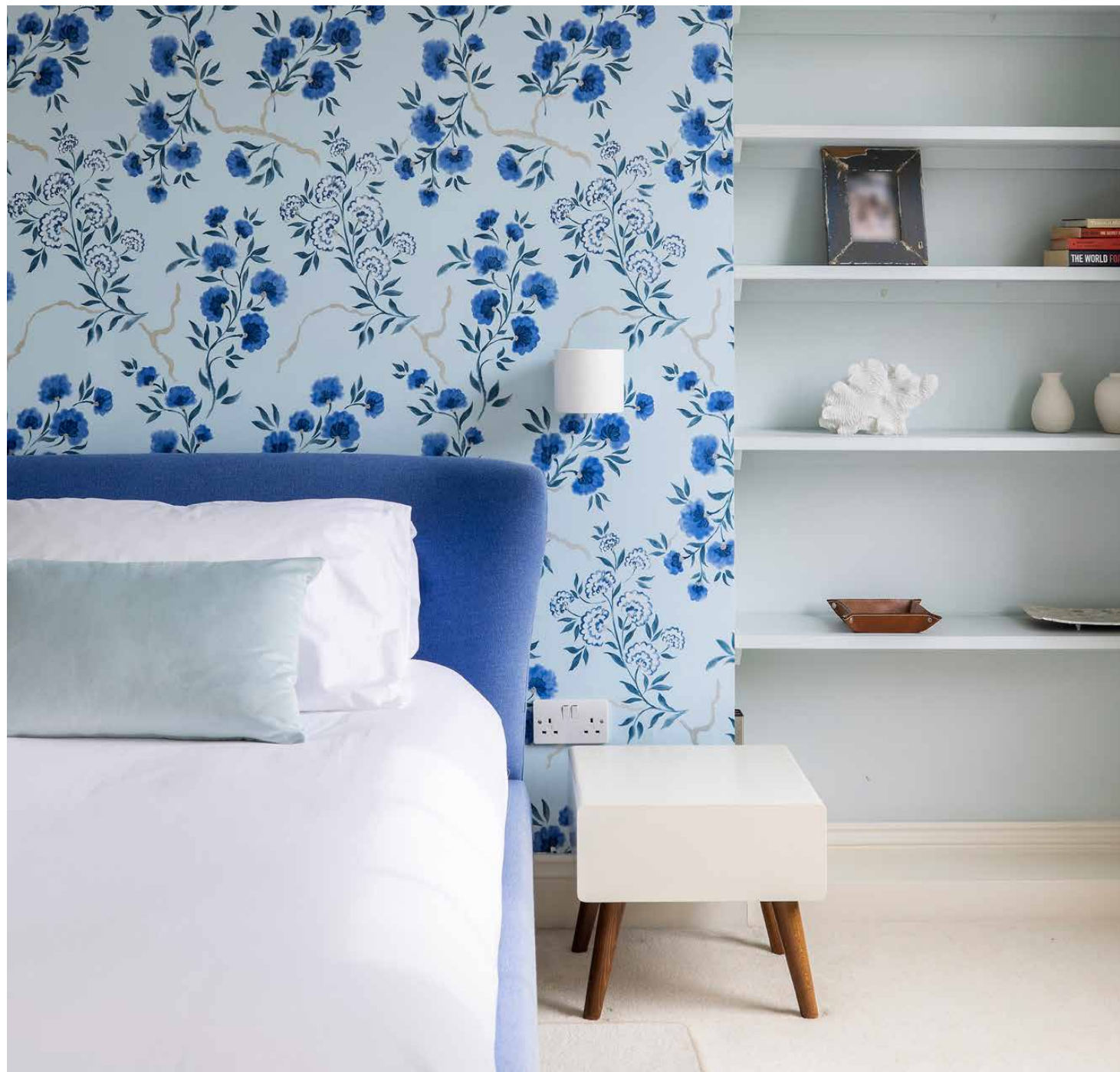








Uplifting shades of sky-blue welcome you into the principal bedroom suite. Dominating the space, an inviting bed and chair echo the royal blue of the floral wallpaper. Beige marble adds a calming finish to the en suite, which features a large bathtub and walk-in shower. Across the top floor, whitewashed walls and integrated wardrobes complete the spacious guest bedroom.

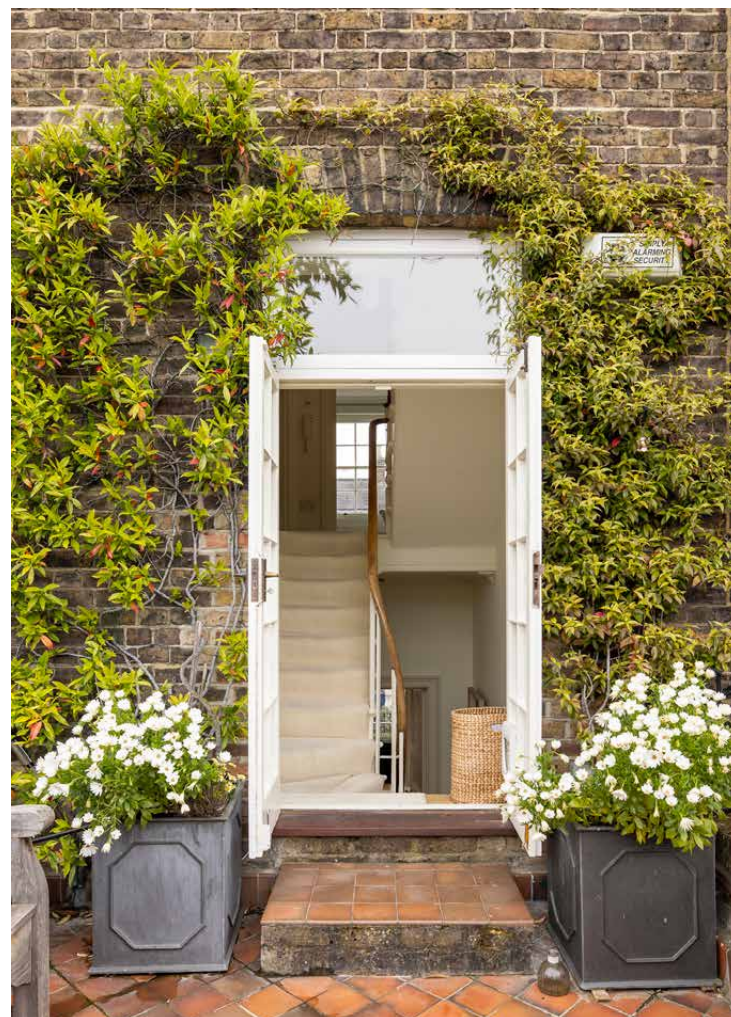














LOCATION

Sitting in one of London's most picturesque neighbourhoods, Ebury Street is a soothing sanctuary just a stone's throw away from vibrant Chelsea.

Start your morning off right with a pastry from Poilâne, then take a leisurely stroll past the floral façades on Elizabeth Street, stopping at Tomtom for coffee or Bayley & Sage for essentials. For an afternoon of retail therapy, head to the King's Road to browse Reformation or sample the scents at Penhaligon's. On your way home, pay a visit to Le Poule au Pot for candlelit dining or Boisdale for whiskey, cigars and live bands.



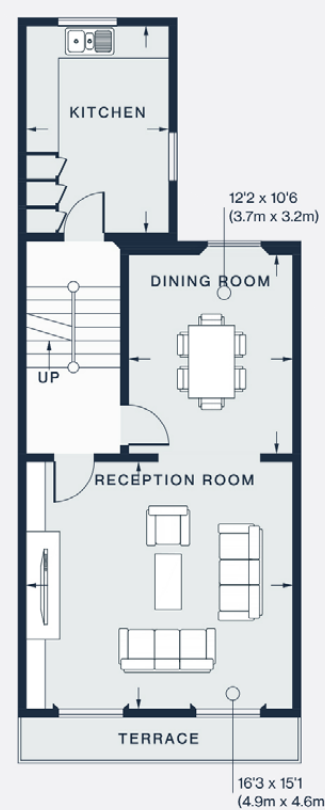


PROPERTY HIGHLIGHTS

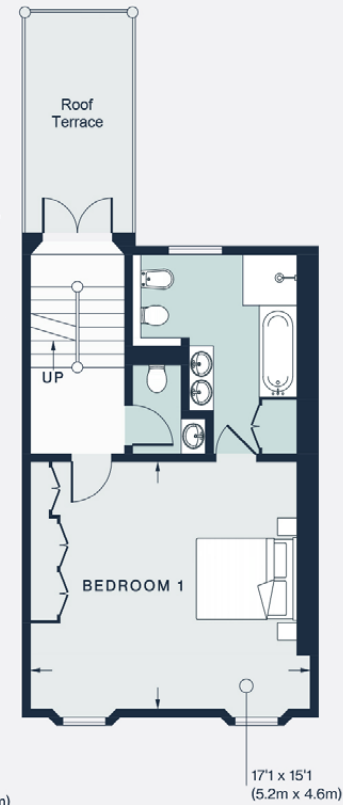
- Open-plan reception and dining room
- Separate kitchen
- Principal bedroom suite
- Guest bedroom
- Family bathroom
- Private roof terrace
- City of Westminster



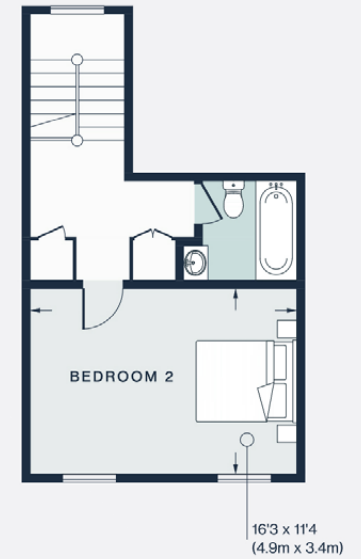
RAISED
GROUND FLOOR



GROUND FLOOR



FIRST FLOOR



SECOND FLOOR

Approx. Gross Internal Area = 1512 sq ft / 140 sq m

Floor plans are for illustrative purposes only and not to scale. Compliant with RICS code of measuring practice.
Prepared for Domus Stay. Copyright © All Rights Reserved.



Please don't hesitate to get in touch
if you have any questions or require
any further information.

hello@domusstay.com

+44 (0)20 8168 8880

Domus Stay provides the perfect combination of property, place and personal service for the world's most remarkable people. If you have any questions, or if we can help in any way, please contact us on the above number. Be it about a property you have, a property you want, dates to check or any special requirements you may need, we'd love a chat.

