

domus  
stay.

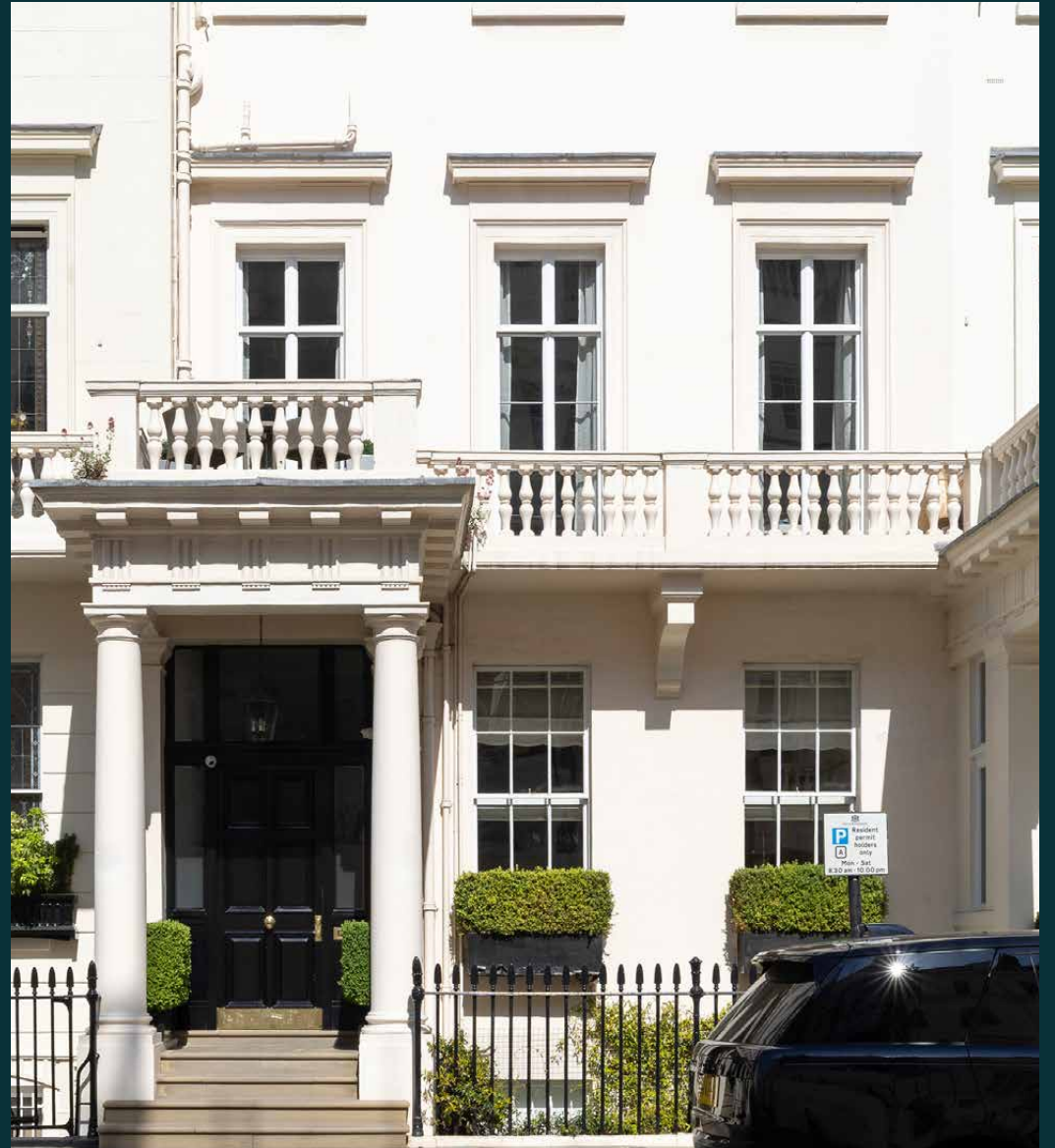
---

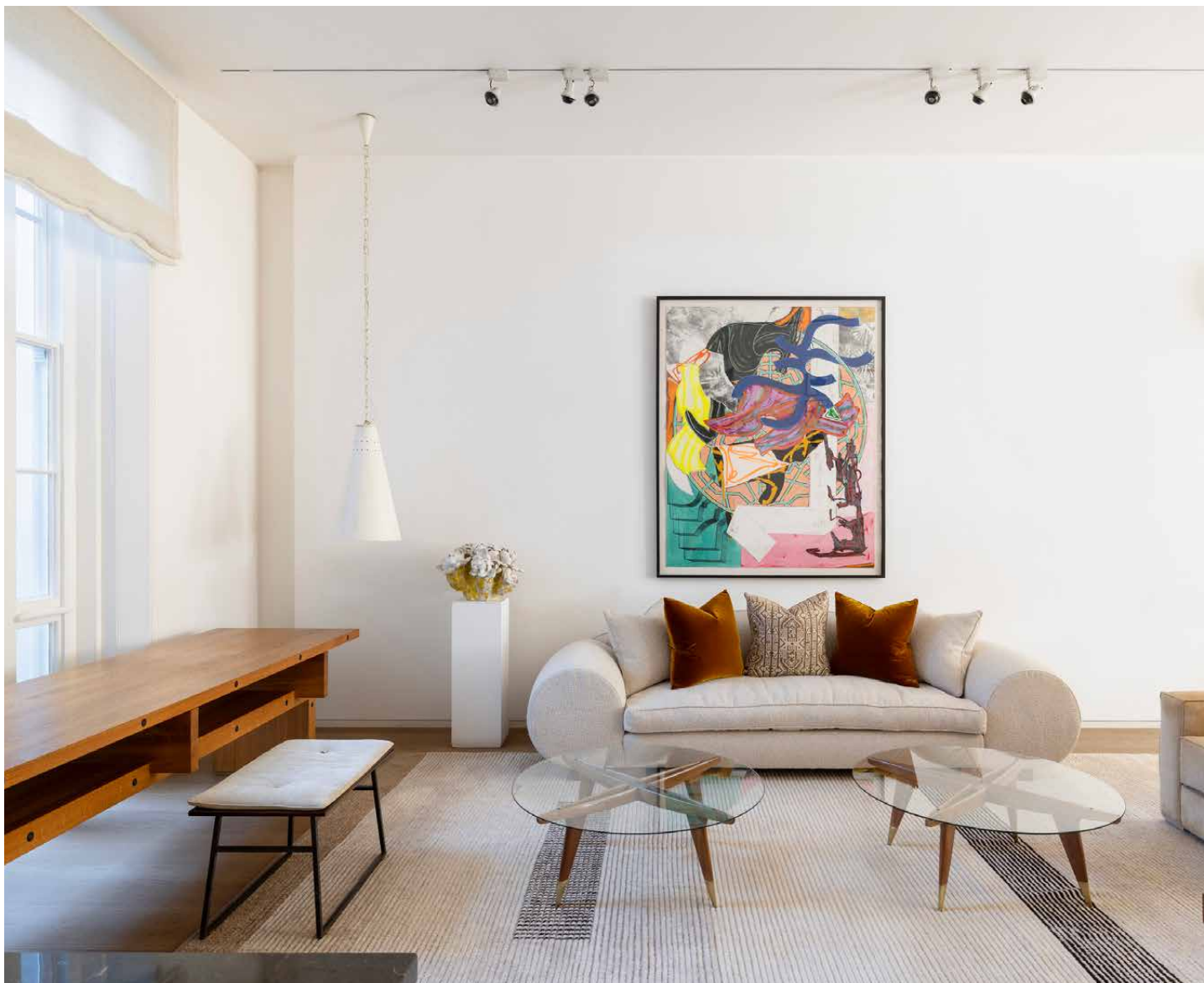
## Eaton Place II

BELGRAVIA

6 Bedrooms, 5 Bathrooms  
For 12 guests

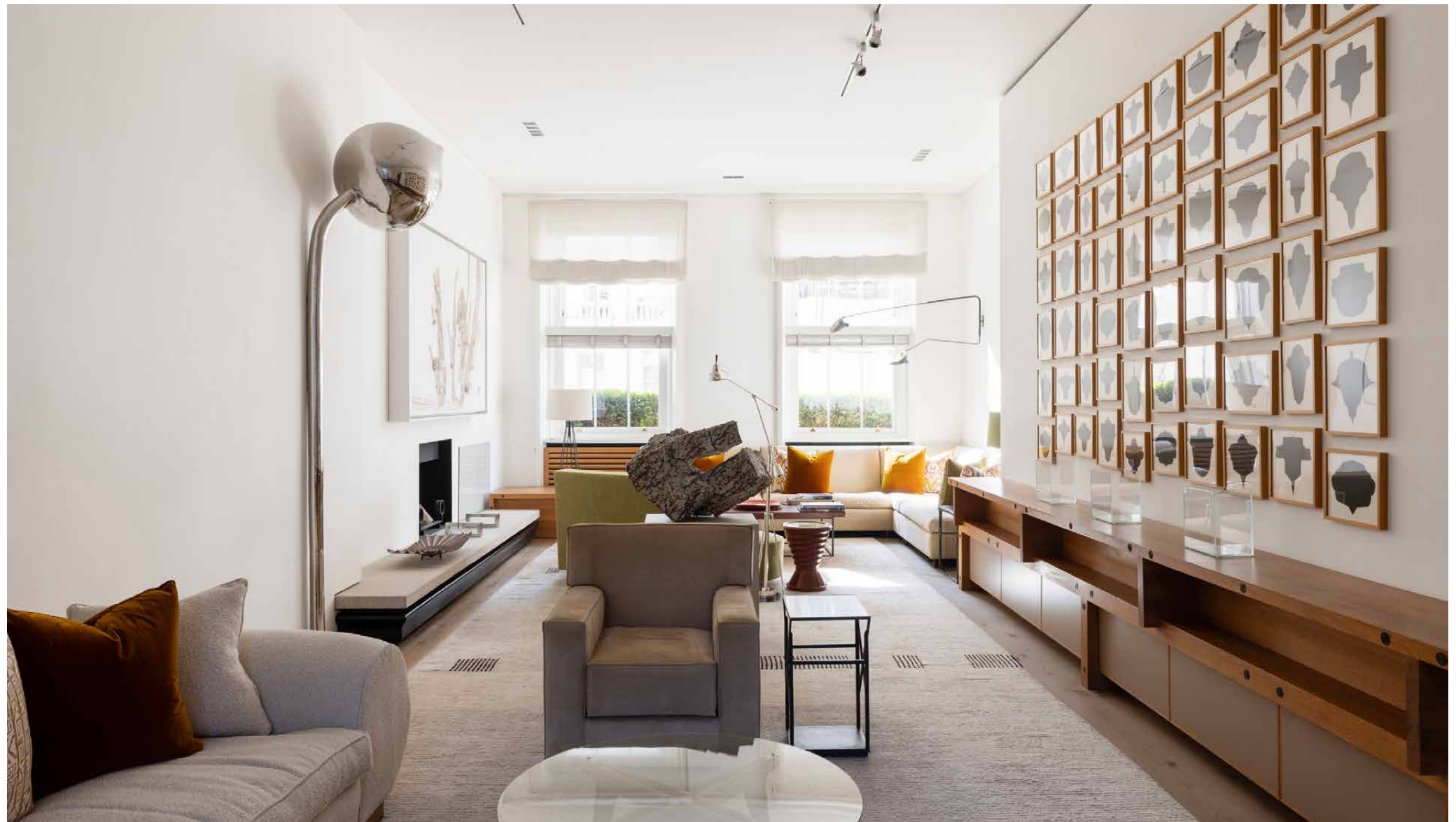
---





This six-bedroom home reimagines a Grade-II listed townhouse with architectural precision.

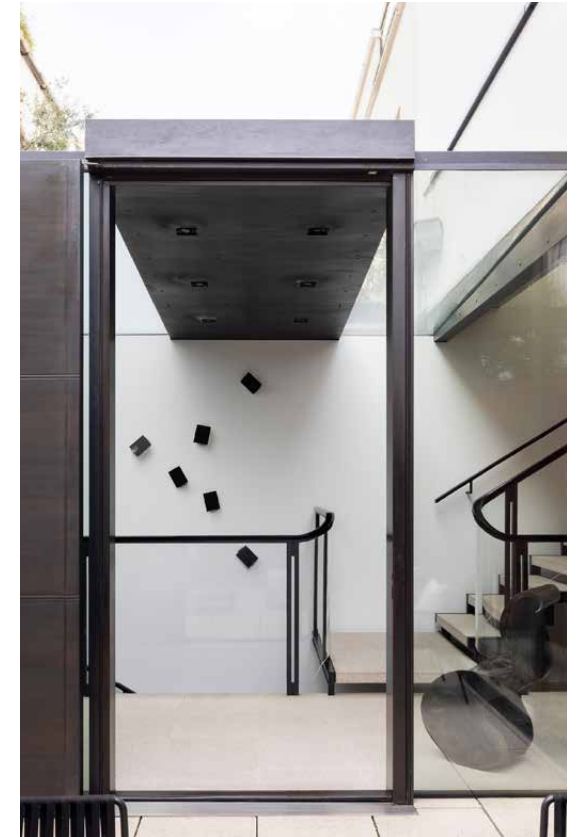
Set on one of Belgravia's most sought-after streets, Eaton Place's sweep of white stucco townhouses speaks to a different pace of London life. Designed by Eric Parry Architects in collaboration with Chester Jones, this reworked home spans over 6,800 sq ft across four levels – plus its own private entrance to the rear. A converted lateral apartment integrated into a mews brings additional space, six bedrooms are crafted with flawless interior design and two secluded patio gardens are set to refresh.





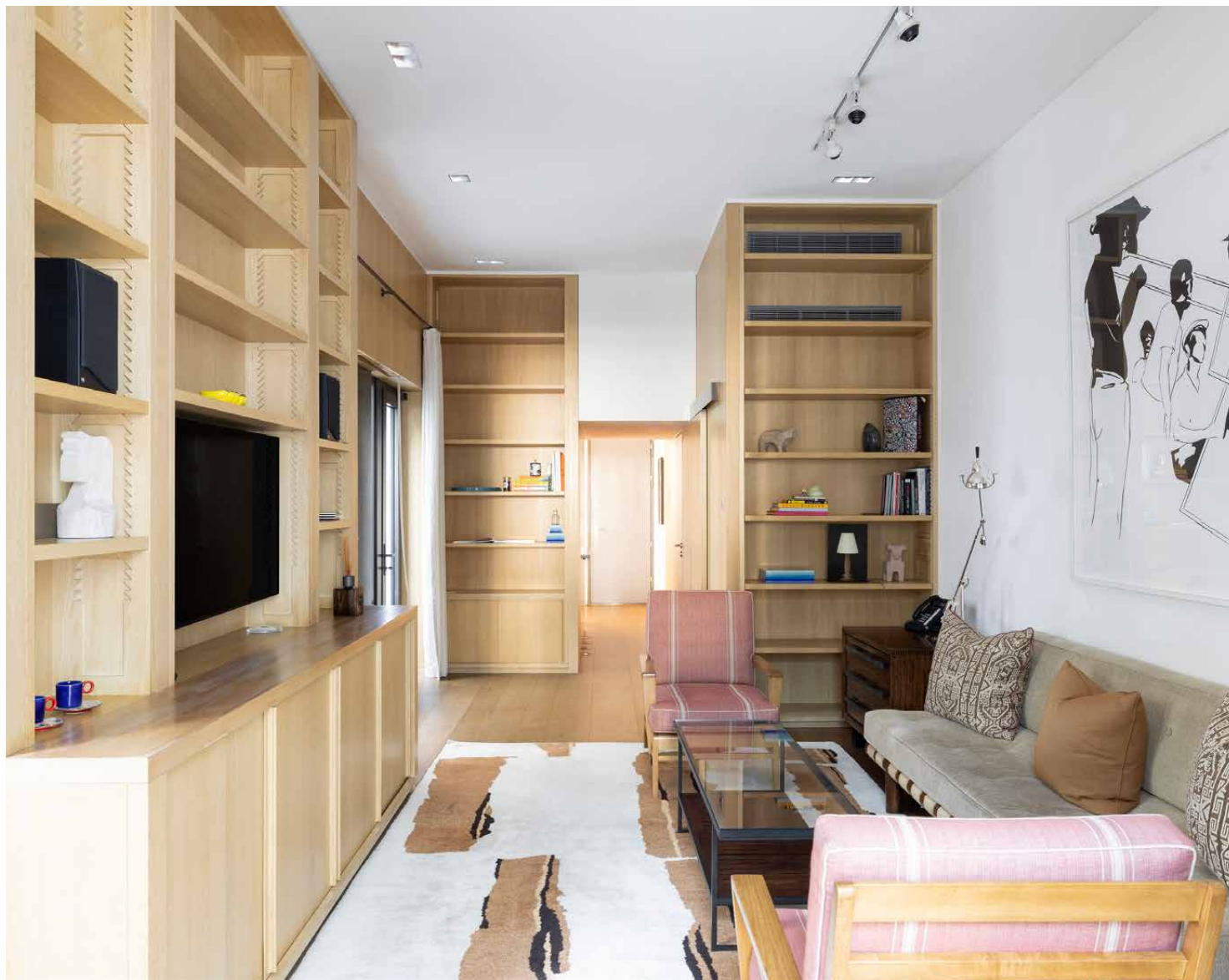
# Living spaces

The ground-floor entrance unfolds into a dramatic sequence of living spaces, all thoughtfully arranged around a central courtyard garden. To the right, the reception room sets the tone with soaring ceilings, tall sash windows and restored cornicing. A pared-back design lets these architectural details shine, while a neutral palette enhances the sense of volume. Dual-aspect windows flood the room with light, with one side opening to a balcony that seamlessly links to the drawing room.

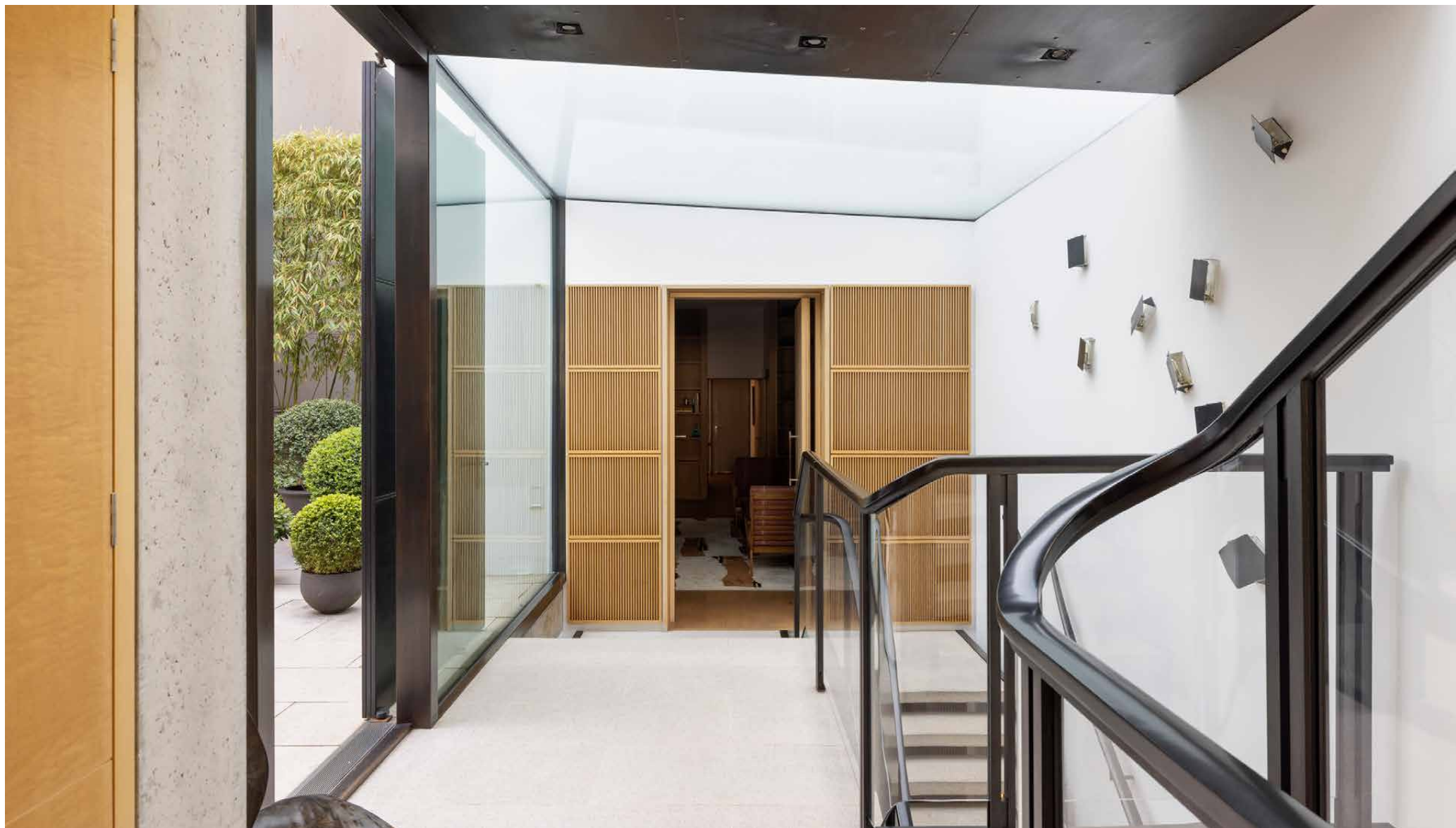








At the heart of the home, a sculptural staircase anchors the design. Curved glass balustrades and granite treads lead to a glazed walkway that links the original townhouse with the mews. Elsewhere, a library and study invite moments of quiet, while a gym and additional media room answer to daily routines. To the rear, a private garage – a rare find in Belgravia – completes the picture.

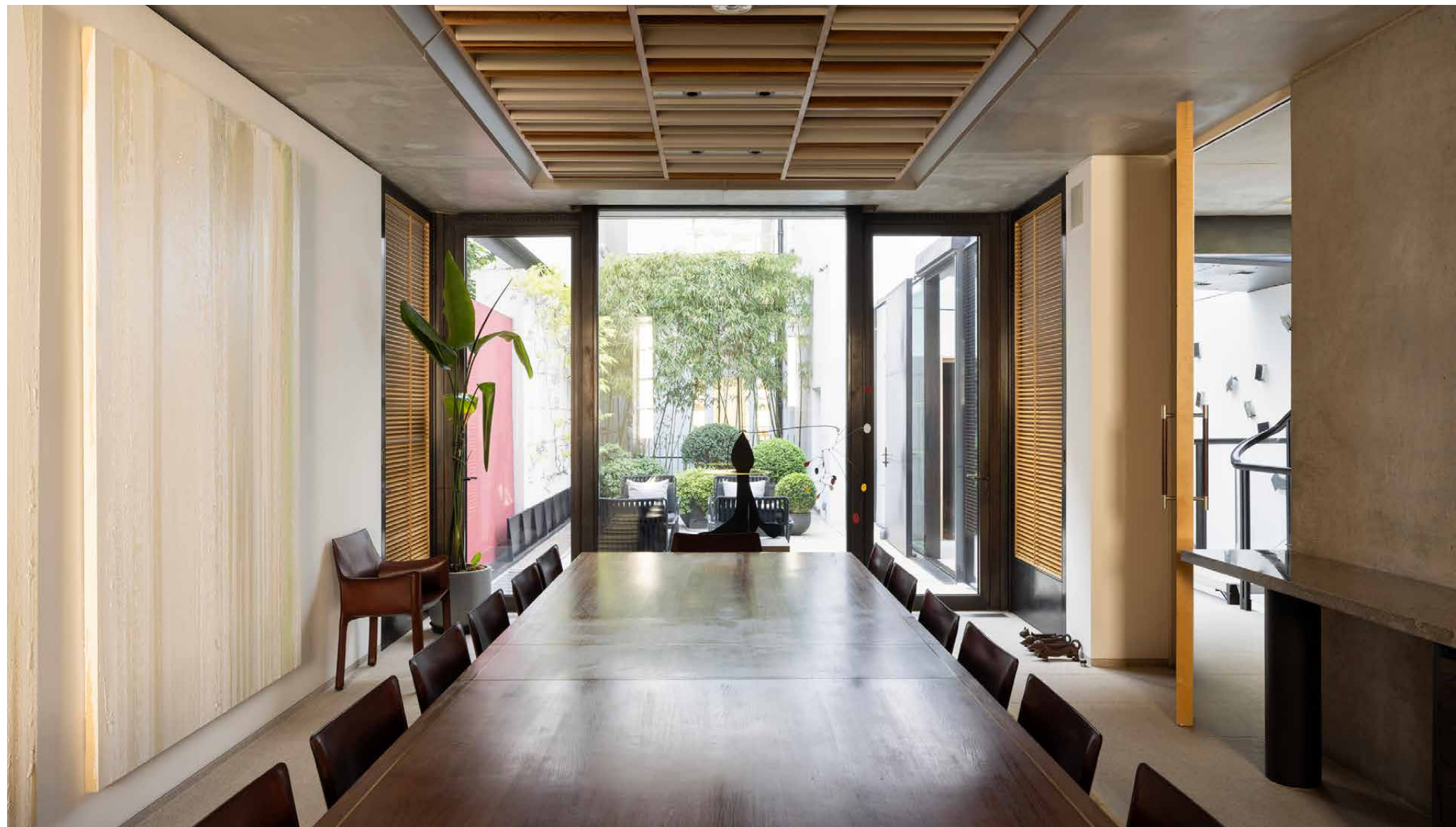


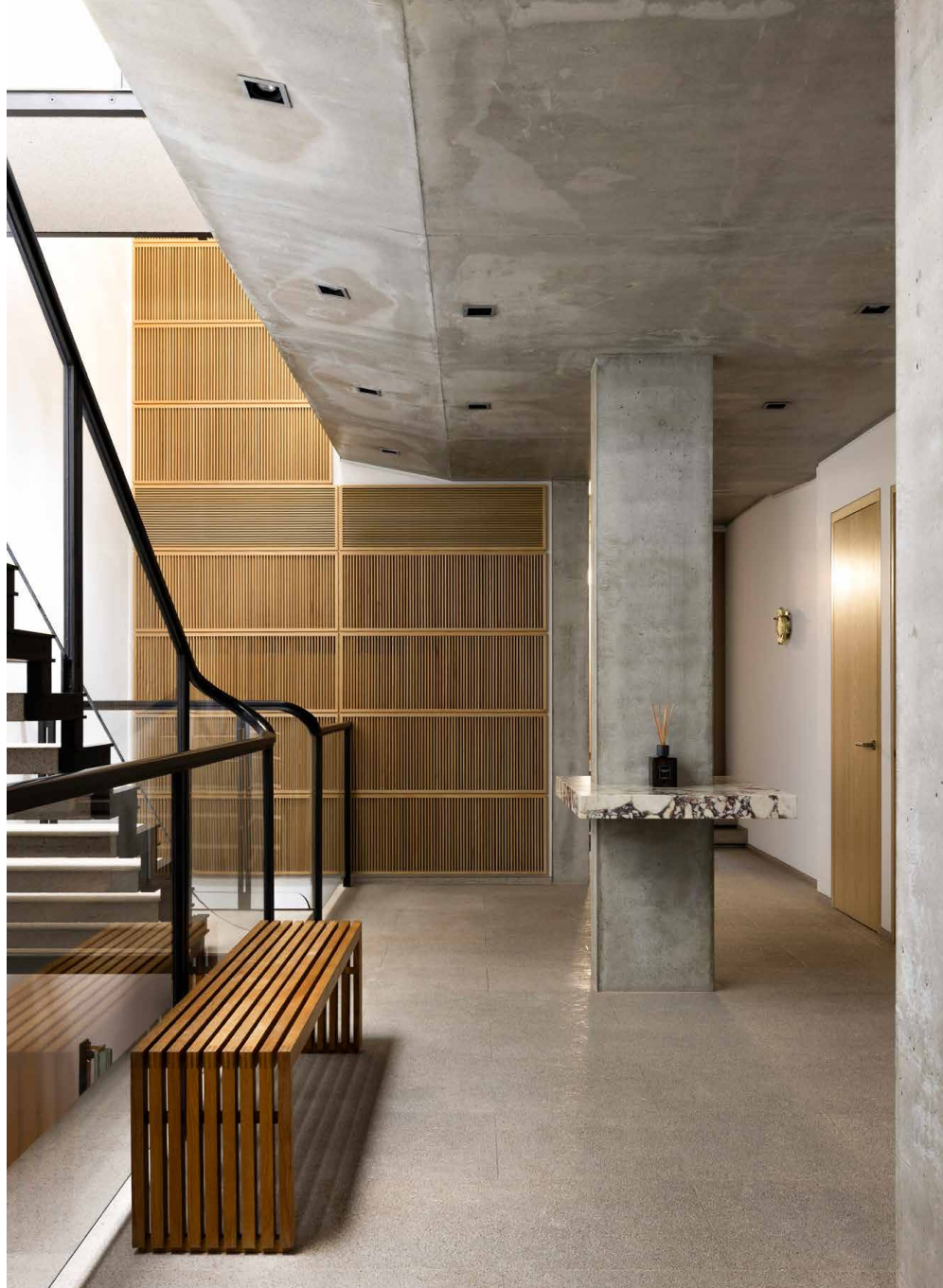
## Kitchen & dining

At the rear, the dining room and kitchen embody understated sophistication. Dark cabinetry, natural stone, and refined metal accents create an engaging, industrial aesthetic. In warmer months, sliding doors extend the dining space into the courtyard, blurring the boundary between inside and out.

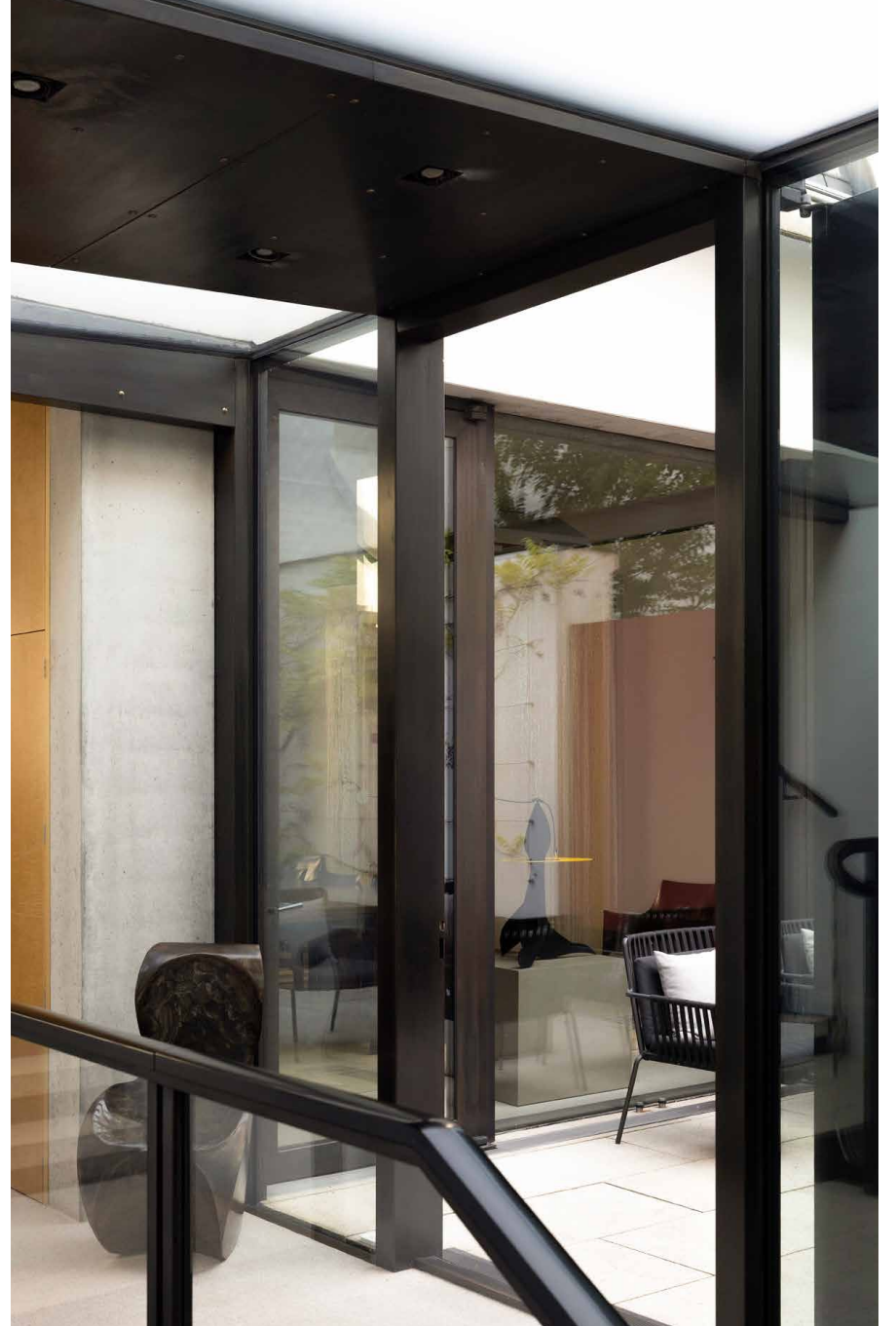








“A pared-back design lets these architectural details shine, while a neutral palette enhances the sense of volume.”









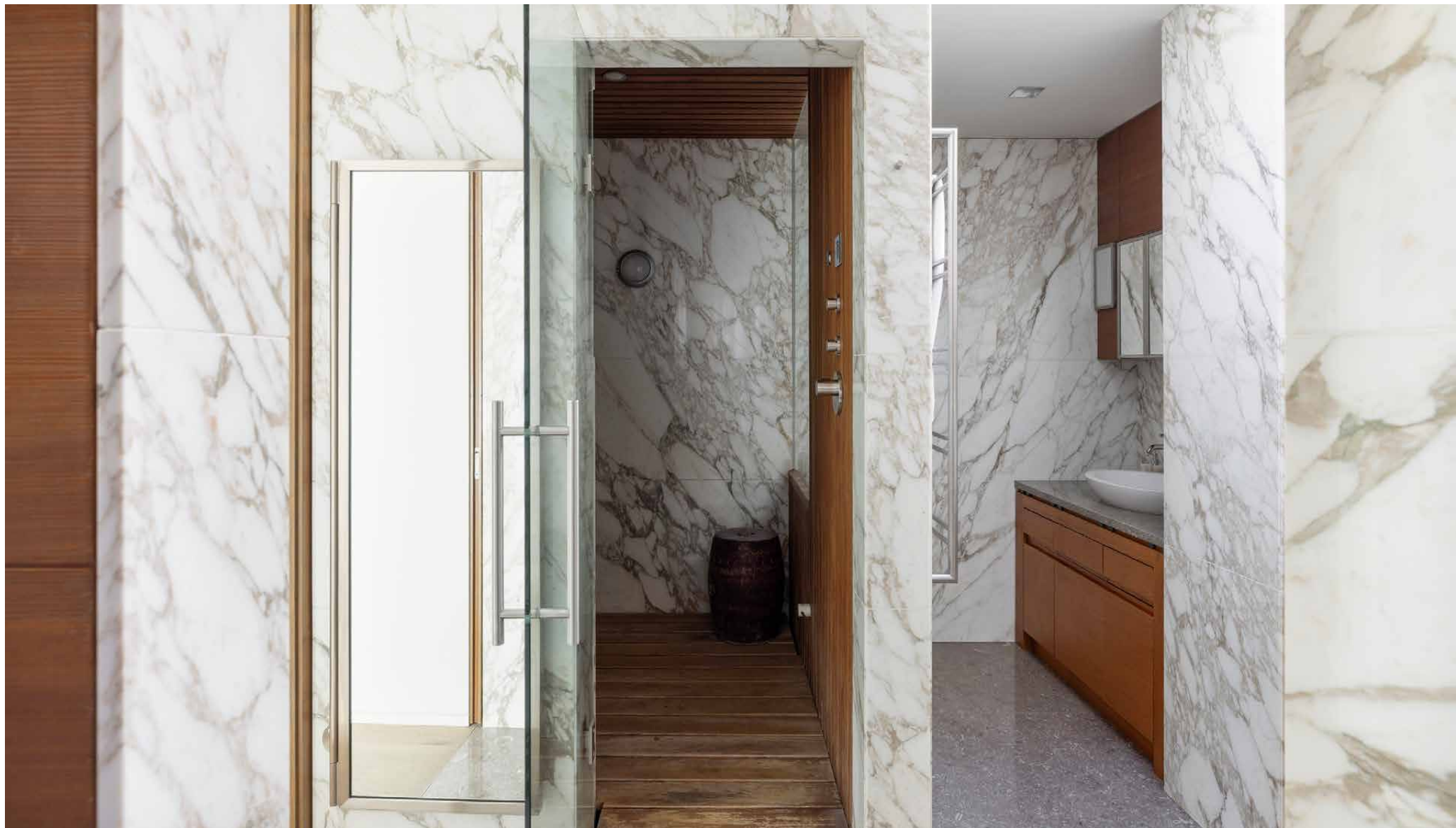
## Bedrooms & Bathrooms

The uppermost floor is given entirely to the principal suite. Two bespoke dressing rooms frame the space, each designed with the ease of unhurried routines in mind. The marble-wrapped en suite feels like a private spa, complete with a steam room for indulgent escapes.

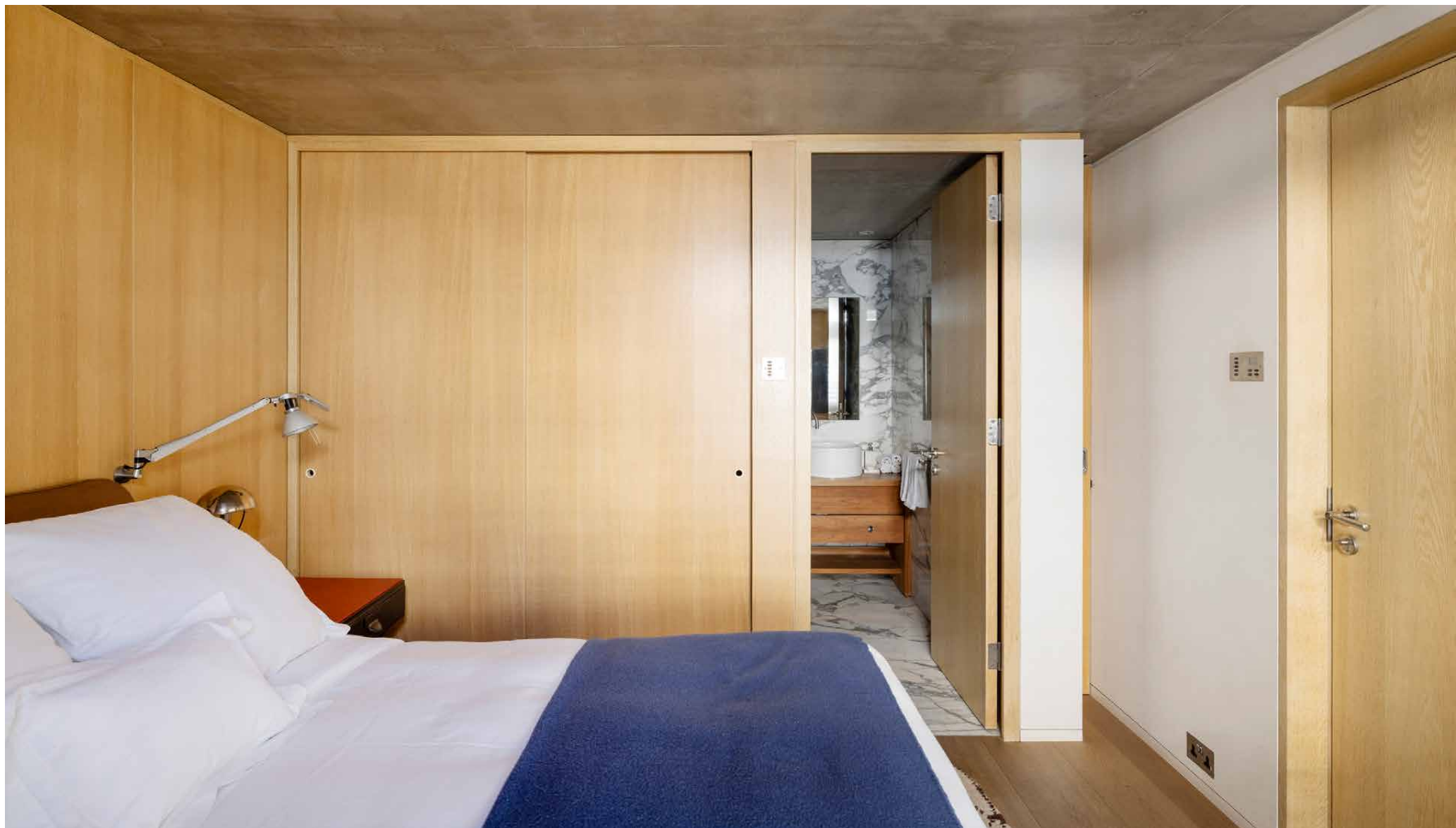
On the lower ground floor, four further bedrooms are arranged around a serene courtyard garden, each room enjoying its own outlook and sense of privacy. Soft light, thoughtful proportions and considered finishes create restful retreats for family or guests. A self-contained studio completes the picture. With its own kitchenette and independent entrance, it offers versatility – equally suited to visiting friends, extended family, or discreet staff accommodation.









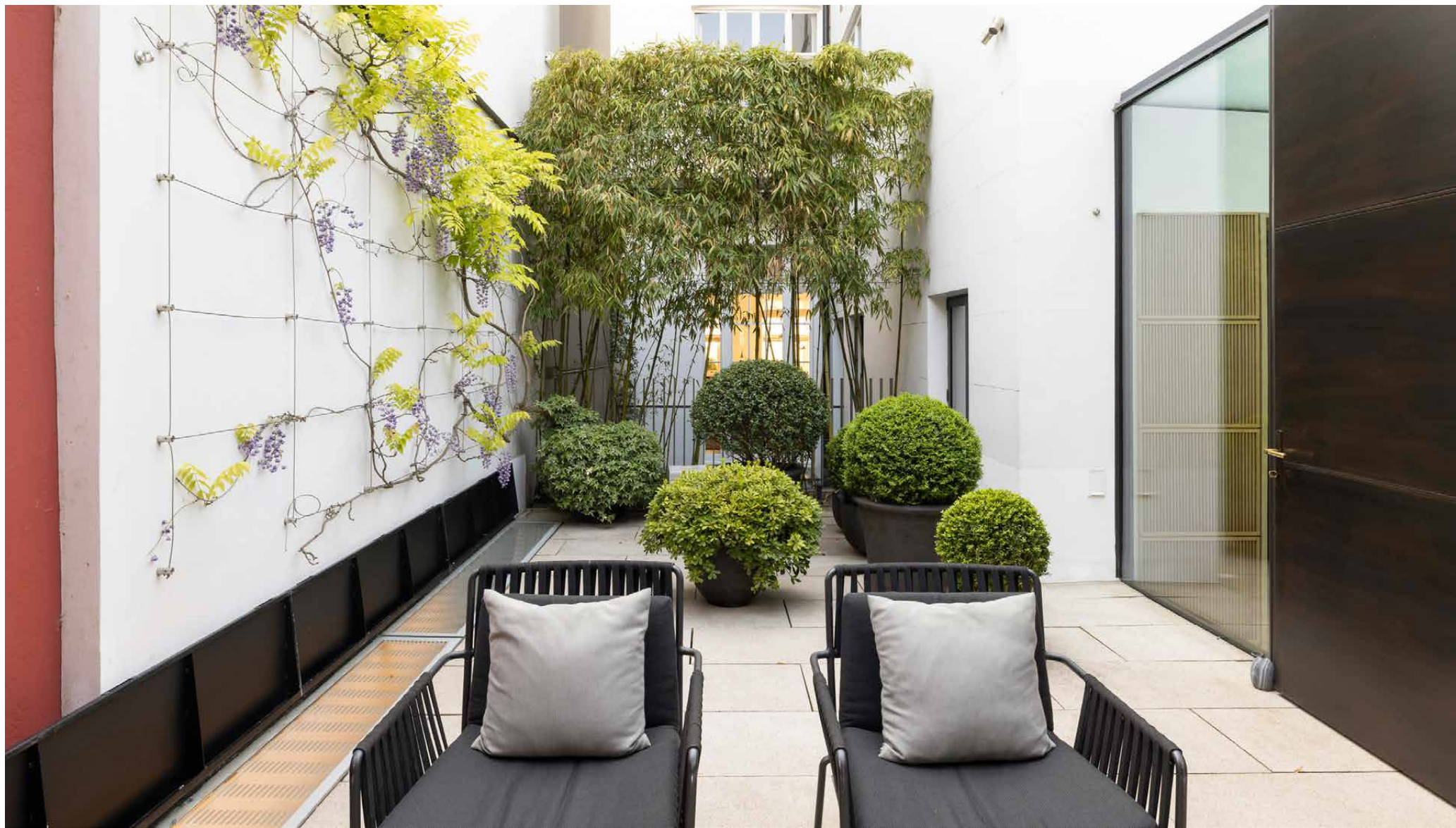






## Outdoor space

Sleek paving, manicured greenery and plenty of sunlight: two private patio gardens offer serene al fresco settings, perfect for making the most of London's warmer months. The central courtyard brings light and calm into the heart of the home, creating a tranquil backdrop for everyday living and effortless entertaining. To the rear, a second patio garden offers further seclusion – a quiet retreat for morning coffees and evening drinks.







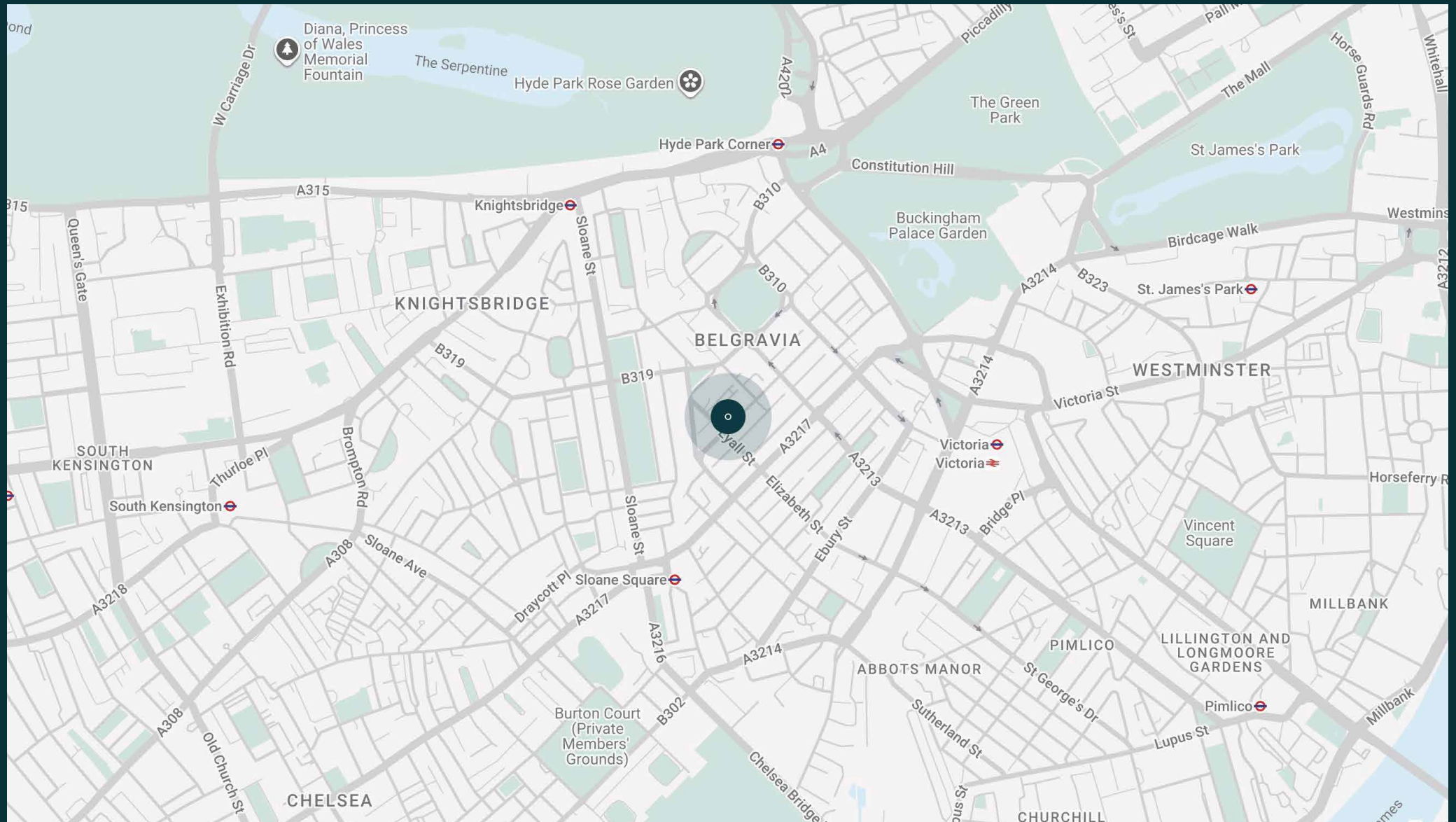


# The neighbourhood

Bordered by Knightsbridge and Chelsea, Eaton Place is a springboard to some of London's most well-heeled spots.

Start your morning on village-like Elizabeth Street with a coffee from Tomtom, stopping by Chestnut Bakery and Bayley & Sage to source organic produce. Head to the King's Road for an abundance of retail offerings, followed by an art-filled afternoon at the Saatchi Gallery. During springtime, the streets bloom for the infamous FHS Chelsea Flower Show. There are fine dining options aplenty, from La Poule au Pot to Hunan, Pétrus by Gordon Ramsay and The Harwood Arms – London's only Michelin-starred pub. Plus, Victoria Station is nearby, giving you easy access across the rest of the capital.

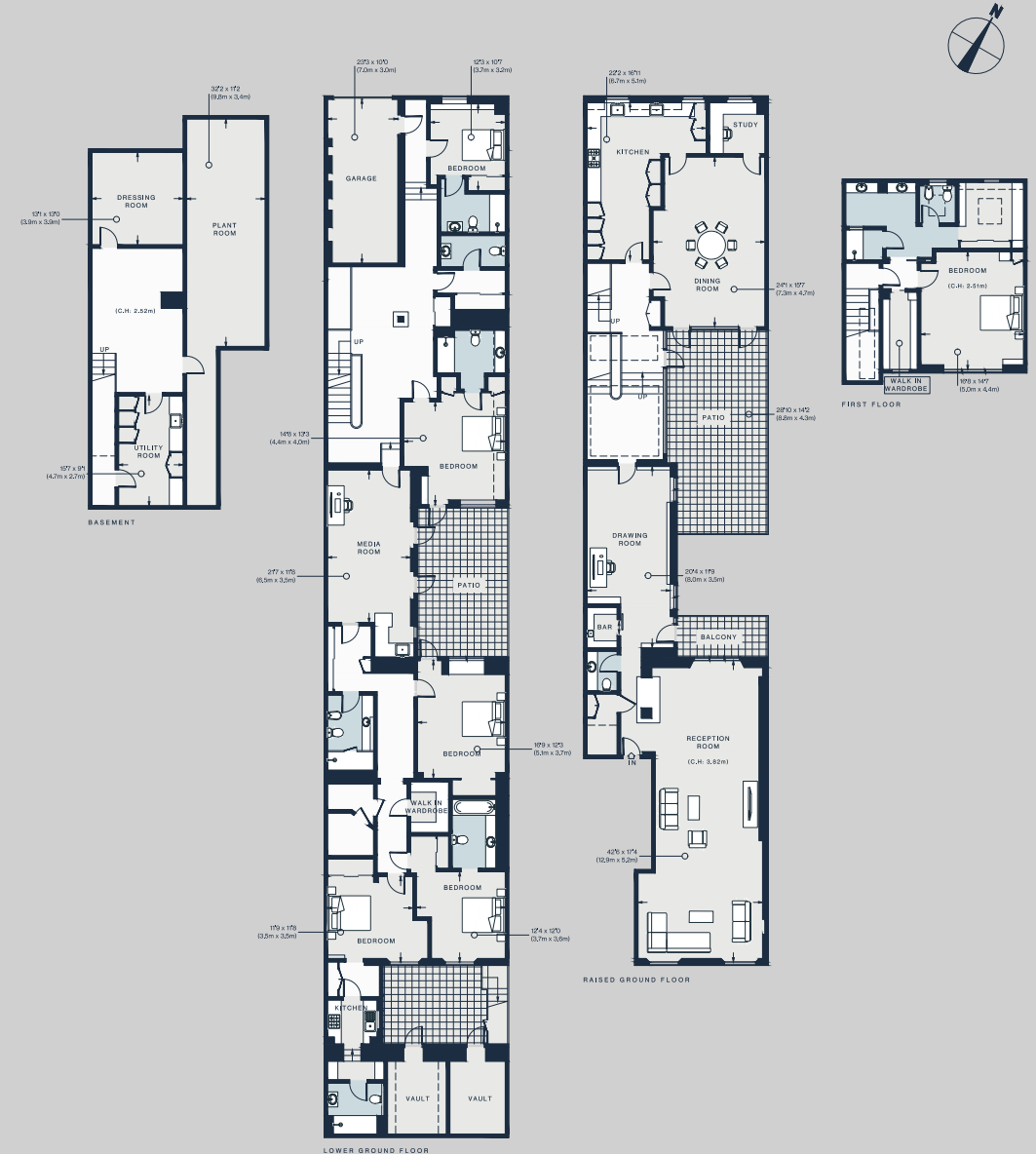




# Property features

- Design by Eric Parry Architects and Chester Jones
- Private mews entrance
- Contemporary kitchen and dining room
- Double reception room
- Drawing room and media room
- Principal bedroom suite with walk-in wardrobe and sauna
- Three guest bedroom suites
- Two additional bedrooms
- Studio space with kitchenette and bathroom
- Two patio gardens and balcony
- Utility room
- Home gym
- Garage

Approx. 666.4 sq m / 7,174 sq ft



Approx. Gross Internal Area = 6,998 sq ft / 650.1 sq m  
 Vault = 176 sq ft / 16.3 sq m  
 Total = 7,174 sq ft / 666.4 sq m



# Guest & concierge services

Our concierge team are here to help guests settle in, seamlessly. Centre court tickets to Wimbledon, Premier League seats with the best views, Savile Row tailors on standby, or a private chef to cater to individual tastes – we aim to elevate every stay.

From the moment of booking with us, each guest has a single point of contact to finesse the details. Our statement spaces are just the starting point – to ensure everyone feels at home, our rates include:

- 
- Weekly housekeeping
  - Flexible check-in/out
  - Luxury linens and Bamford toiletries
  - Legal compliance on all our homes
  - A personal welcome and arrival essentials
  - Unlimited access to guest services and tailored experiences
  - Professional inventory inspection before and after every stay
  - Access to a curated portfolio of sole agency properties



# domus stay.

Please get in touch if you have any questions  
or require any further information.

---

[hello@domusstay.com](mailto:hello@domusstay.com)

+44 (0)20 8168 8880

The property particulars are a guide not statements. Descriptions, photographs, and plans are for guidance only. The Property is offered "subject to contract and references". No warranties, representations, License or Tenancy is given by Domus Stay. Our full disclaimer together with trading names and our Privacy Policy is shown on our website

© Domus Stay 2025. All rights reserved.

