

domus
stay.

East Heath Road

HAMPSTEAD

5 Bedrooms, 6 Bathrooms
For 10 guests





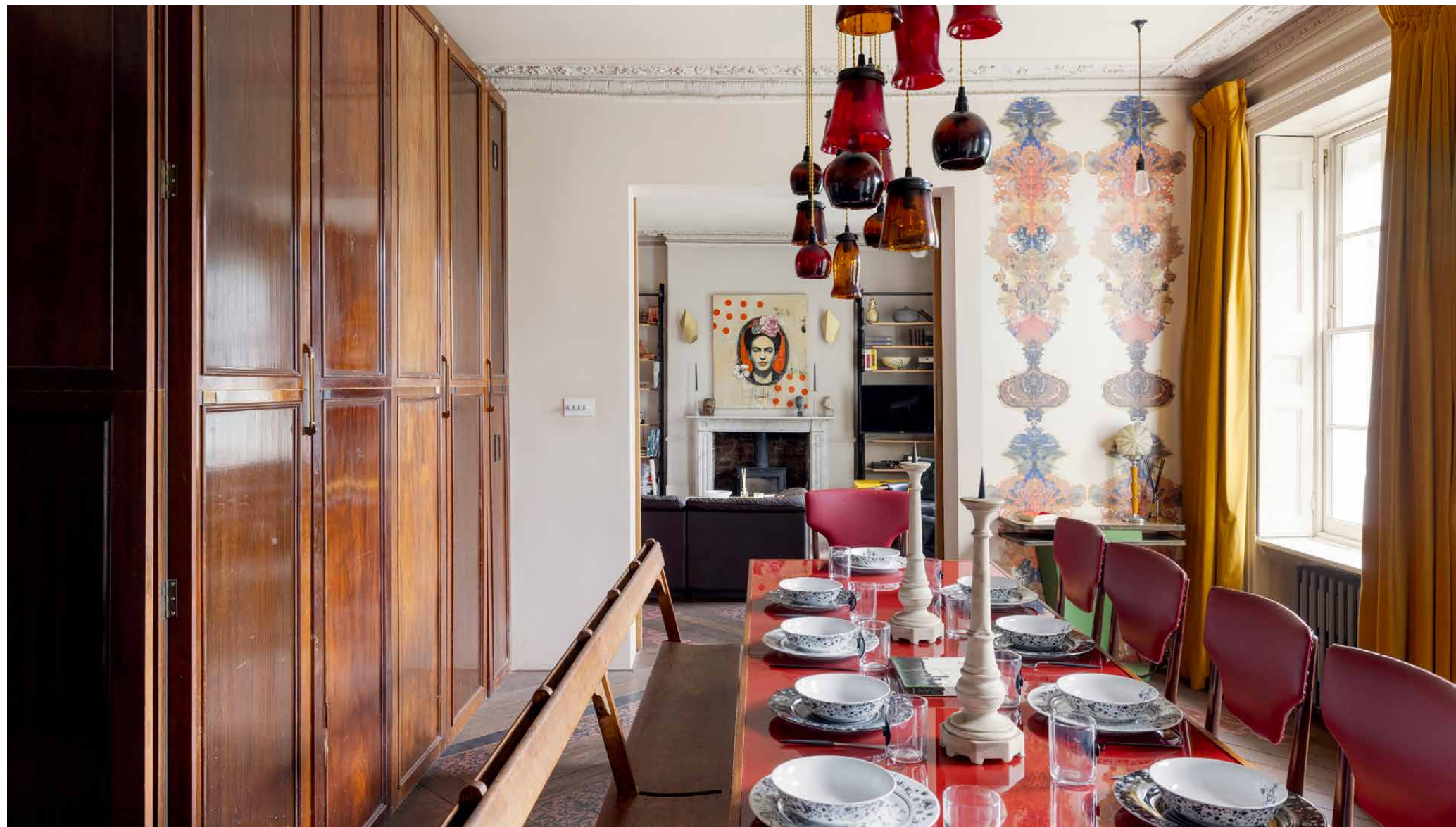
Intriguing inside and out, this Grade II listed five-bedroom house in Hampstead is overflowing with reclaimed furnishings and vintage treasures.

In an enviable enclave just moments from Hampstead Heath, East Heath Road strikes a deliberate contrast with its serene surroundings. Set over four floors of an 18th century home, architectural salvage studio Retrouvius has curated a space that blends heritage features with mid-century charm. From soaring ceilings to storied pieces, impressive home – as featured in ELLE Decoration UK – has been conceived with creativity at its core.

The living spaces

Bespoke tiles inset into the original parquet floors set the tone as soon as you enter, flowing through into the reception and dining room. Whimsical Timorous Beasties wallpaper is paired with industrial lighting, while intricate cornicing and a wood burning stove beneath a marble mantle root the home in its heritage. Sliding French doors open into a formal dining room. Cupboards made from shutters that once called the Natural History Museum home line one wall, illuminated by sash windows dressed in canary curtains on the other. Entertaining comes easy, with a glossy red dining table at its core, flanked by matching leather chairs and a church pew.



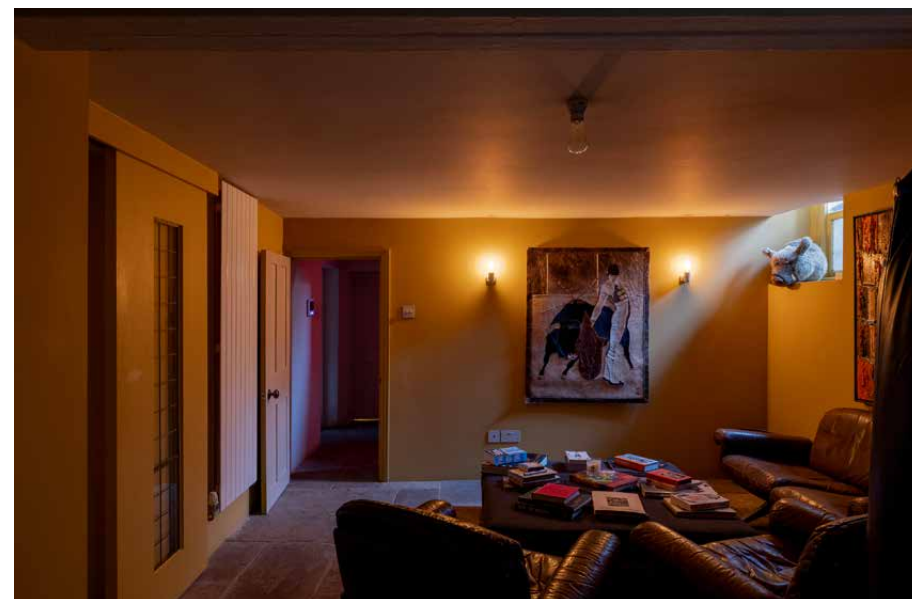


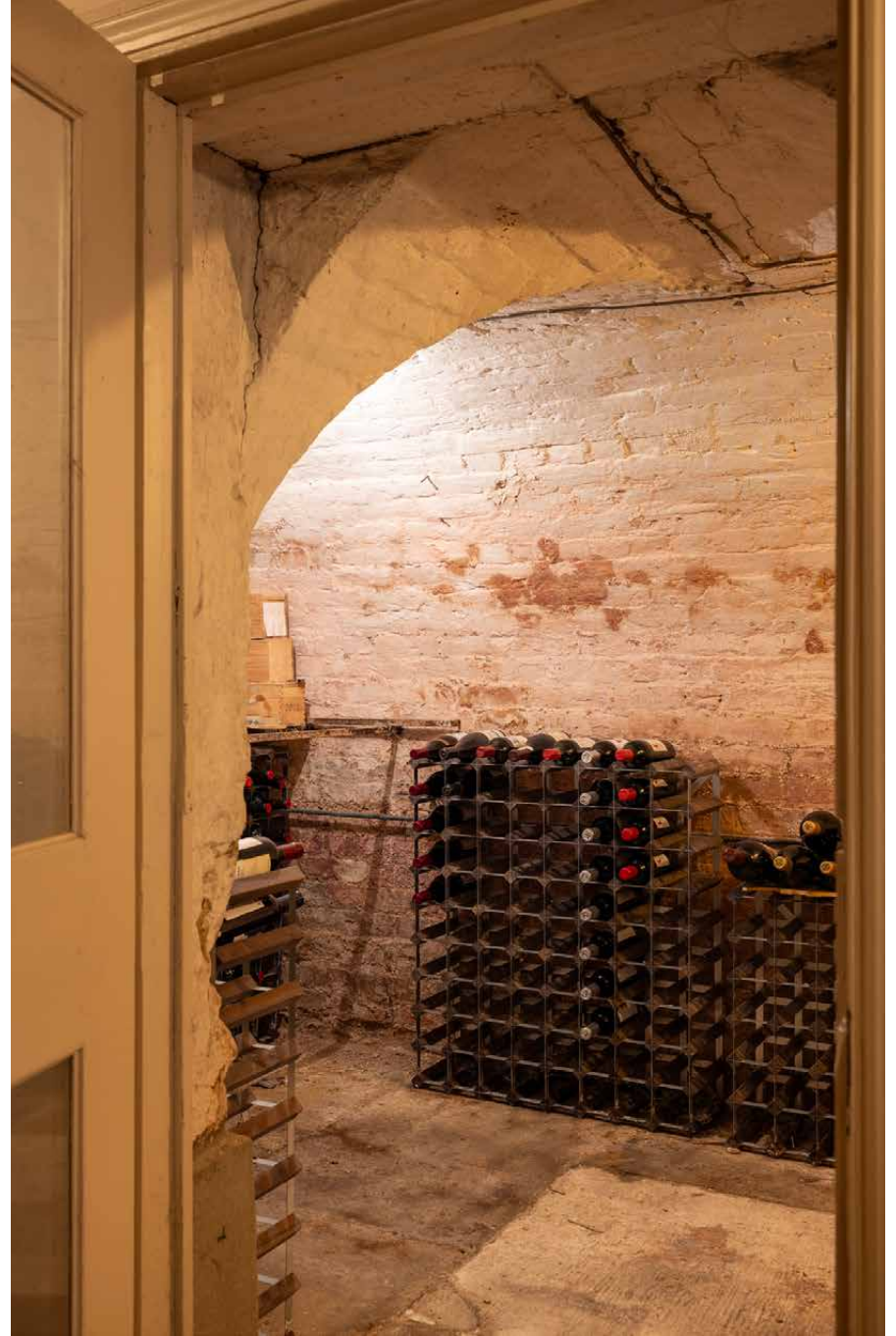


The home's main reception room can be found on the first floor, packed with colour and character. Red modular sofas contrast with green walls and subtly separate the space; a mid-century desk sits to one end, while a fireplace and seating area occupies the other. Storage is fronted by brass lift doors salvaged from the Unilever building, highlighted by natural light flowing through three pairs of French doors.

Everyday living continues on the lower ground floor, with two reception rooms – one light and bright with original parquet flooring, the other designed for movie marathons with sink-in sofas and mood lighting. A gym and office are also on this level, alongside a wine store that sits within the home's original cellar.

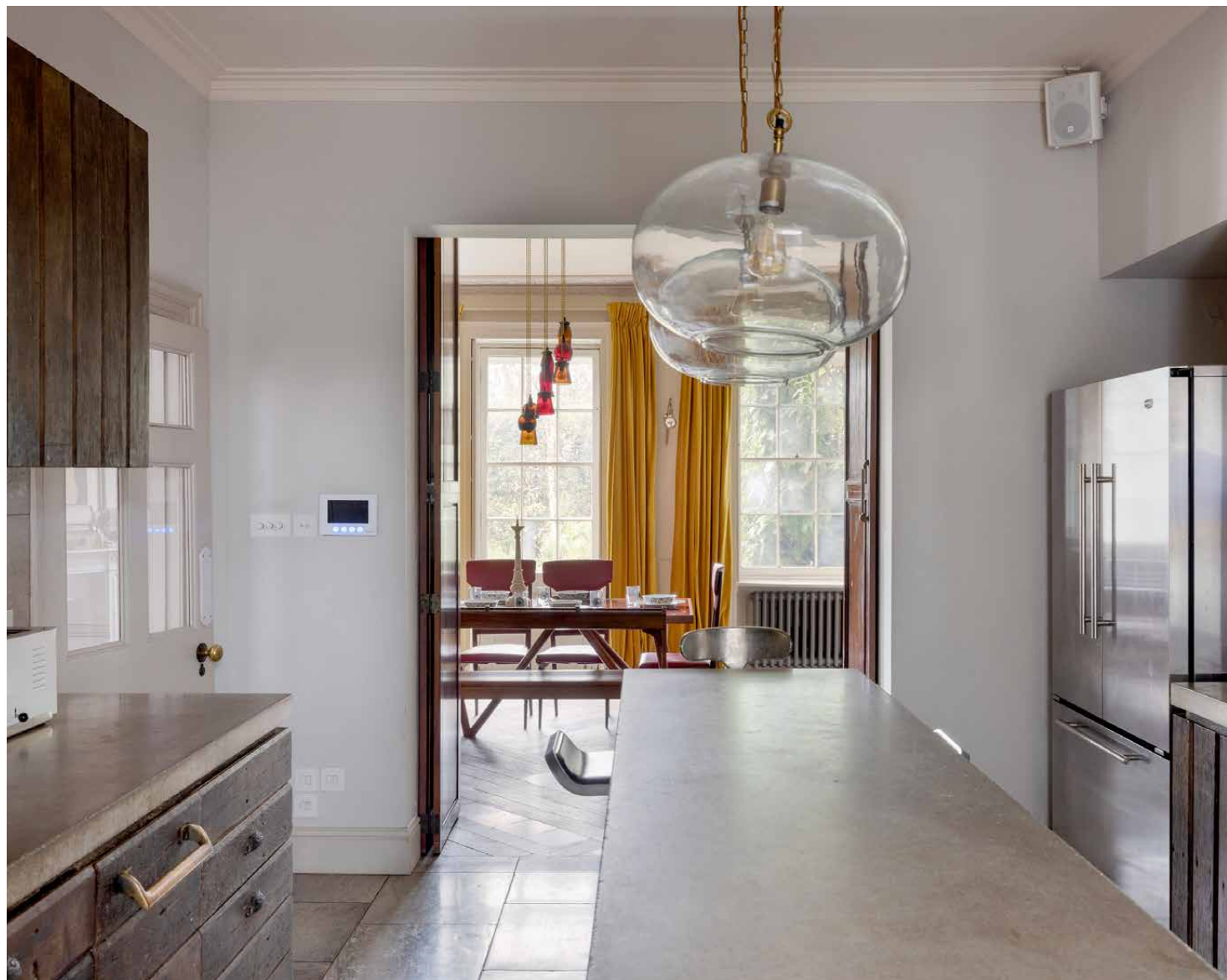


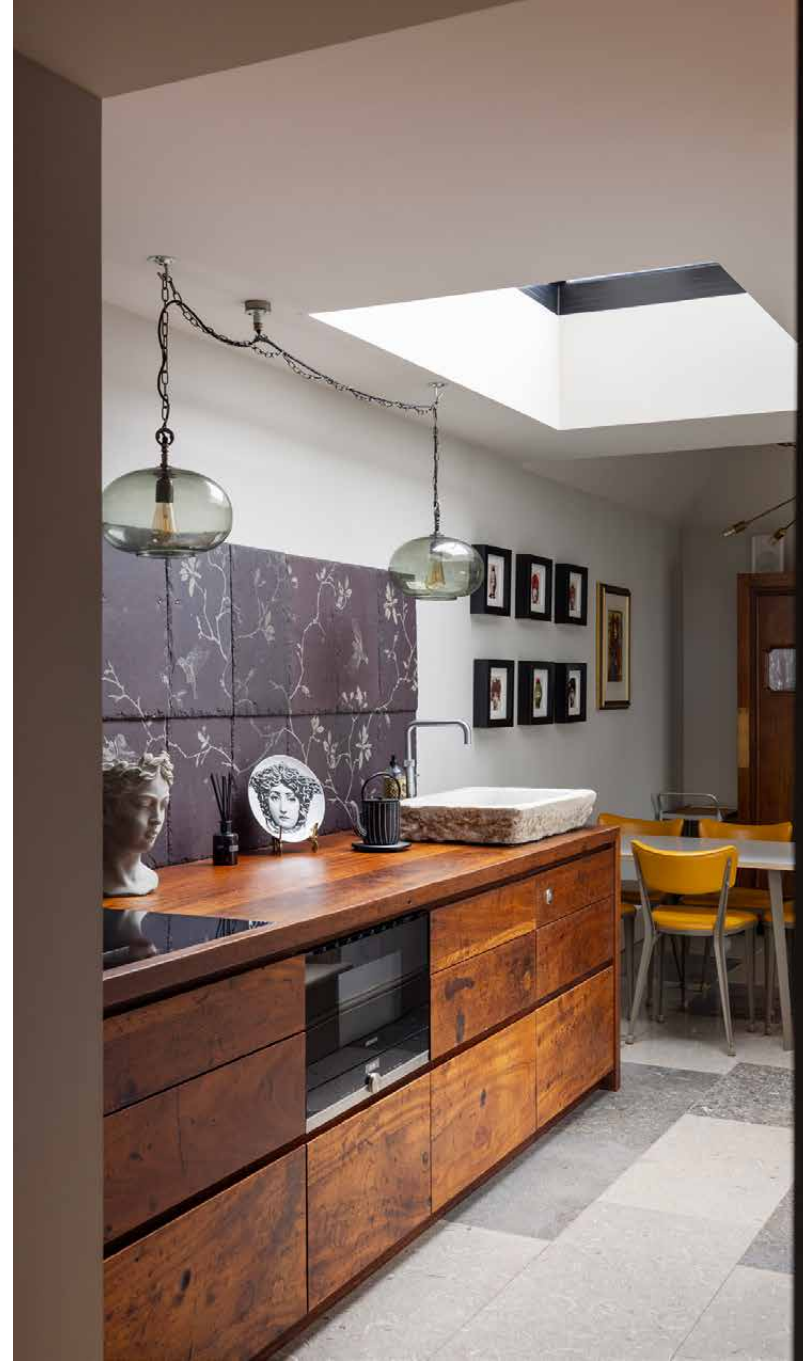


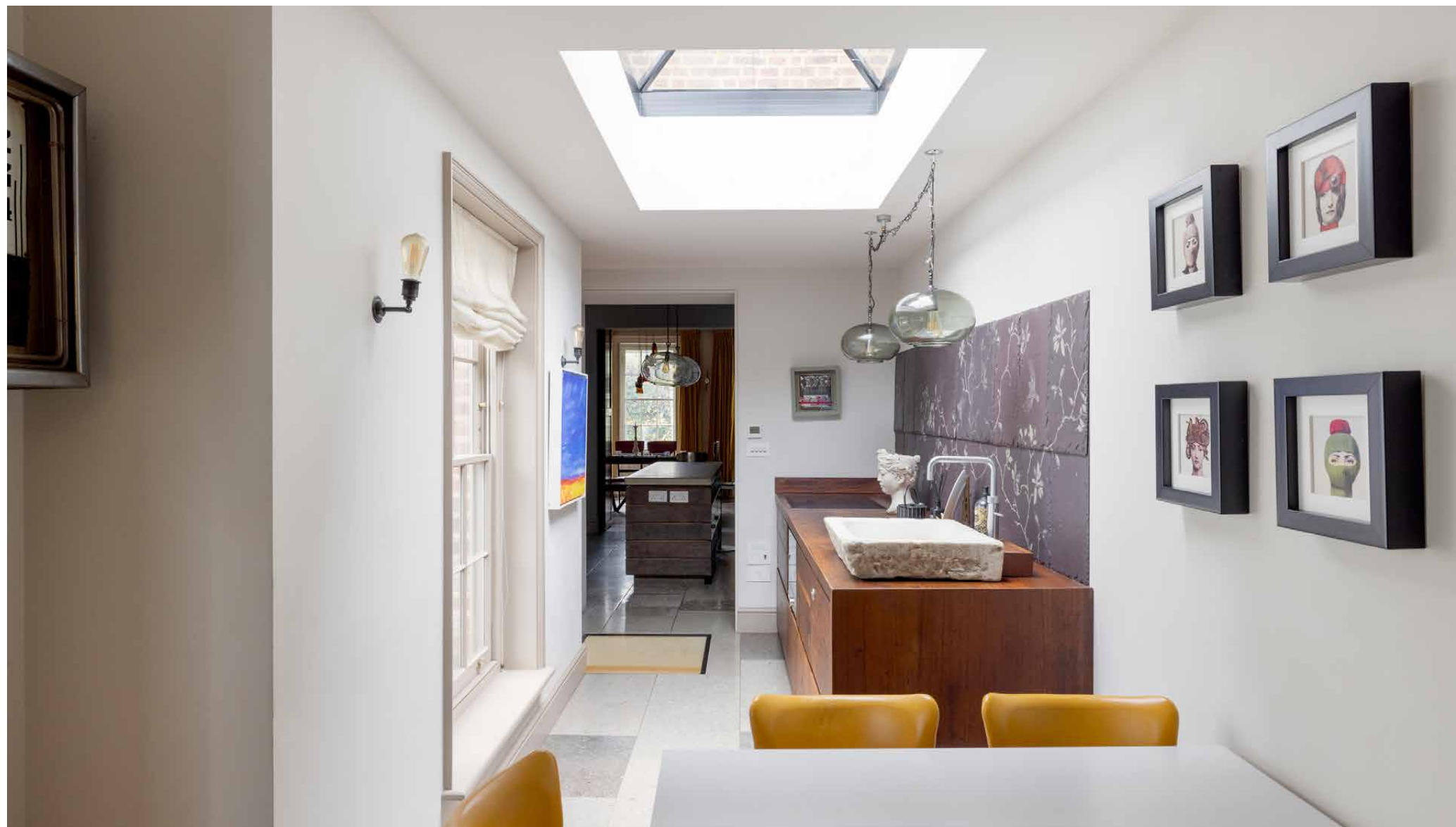


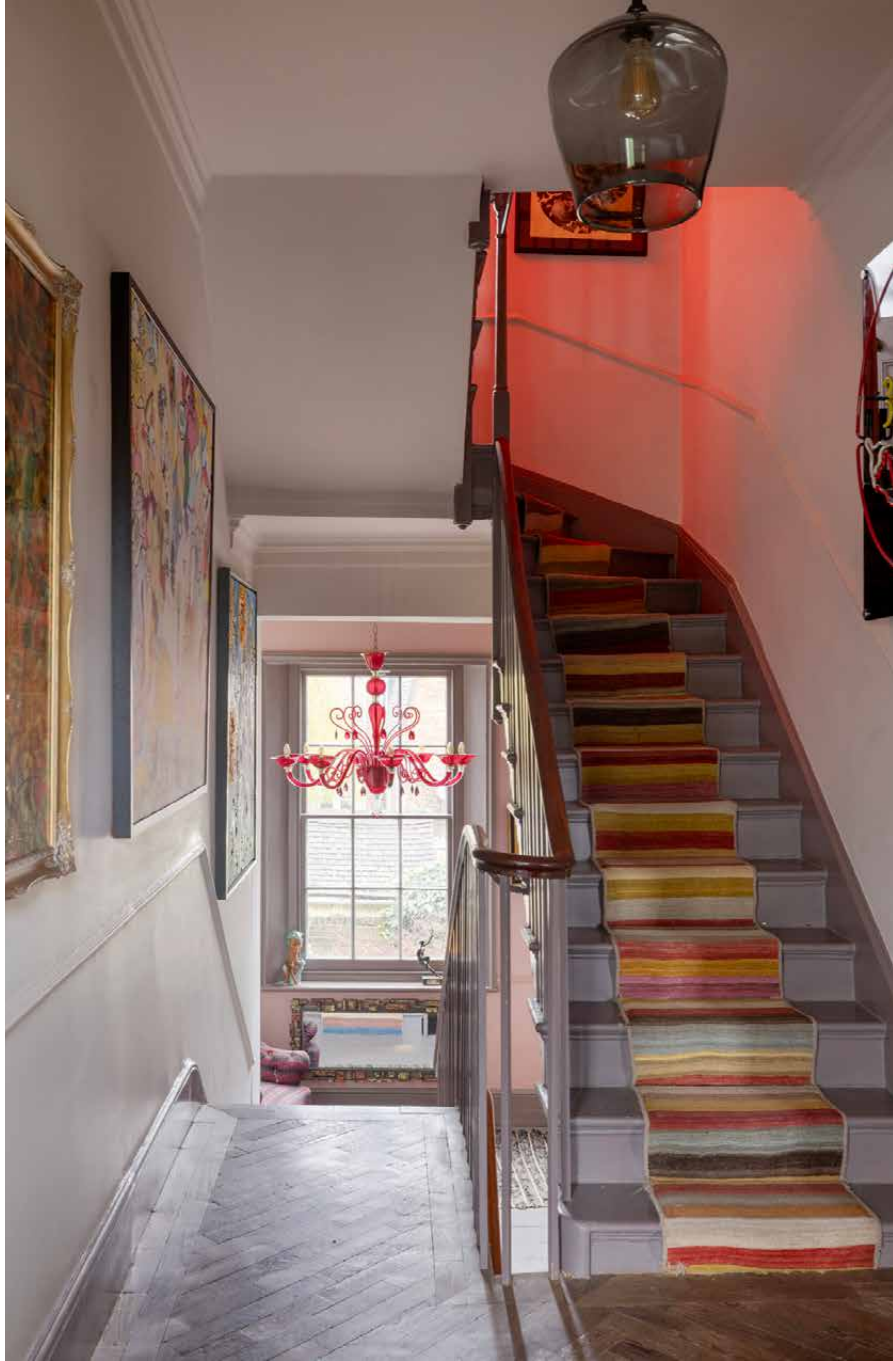
Kitchen & dining

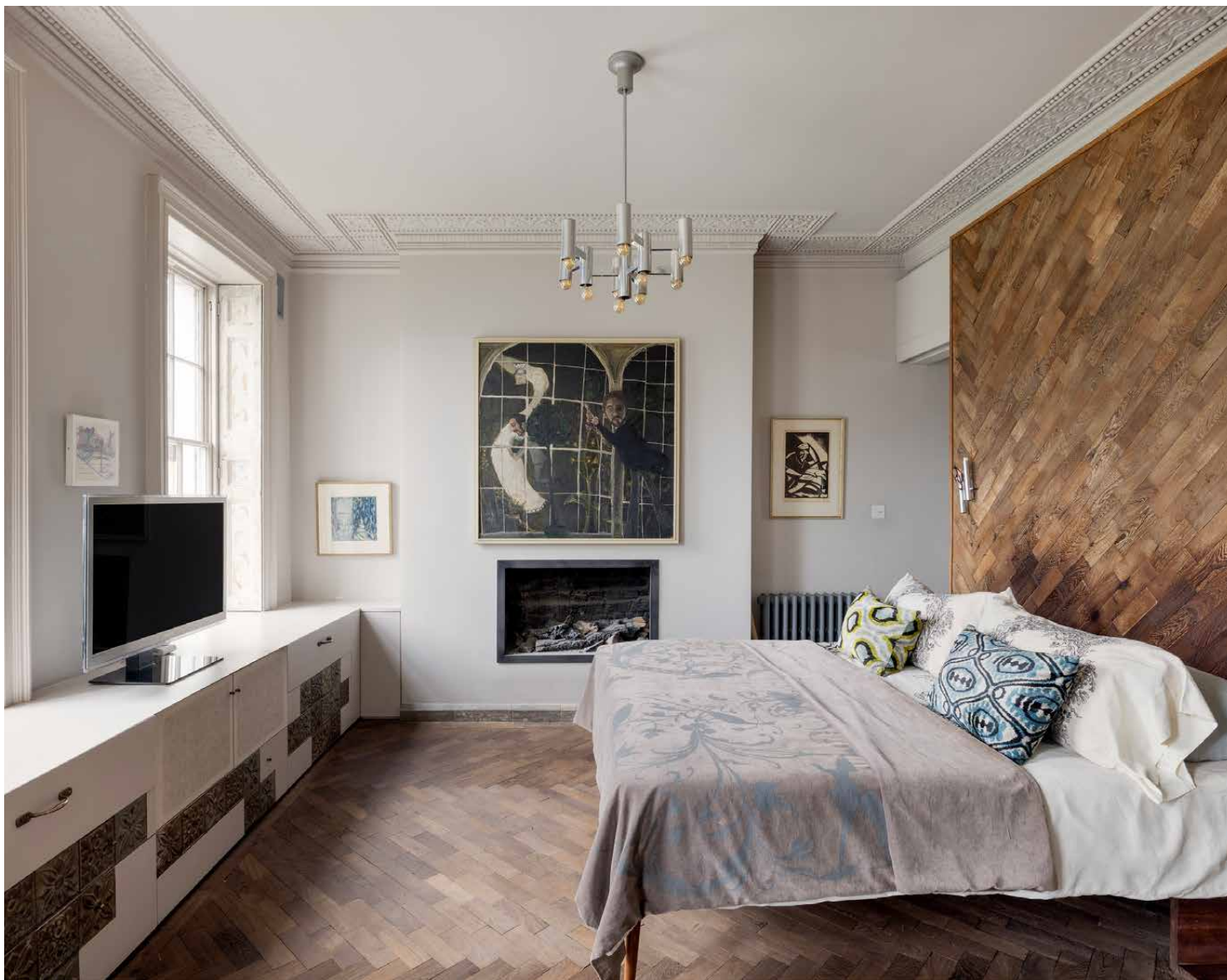
As a contrast, the ground floor kitchen is all neutral tones and textures. A polished concrete island anchors the space beneath glass pendants, flanked by dark wood cabinetry with brushed gold accents. A pale blue Aga warms from the corner, while opposite a reclaimed sink is a rustic addition. Marble flagstones flow up the walls, saved after Heathrow Terminal 5's makeover. A secondary kitchen space continues beneath a skylight, where another striking stone sink sits beside an induction hob. An informal dining setup is perfect for breakfasts or quick dinners.





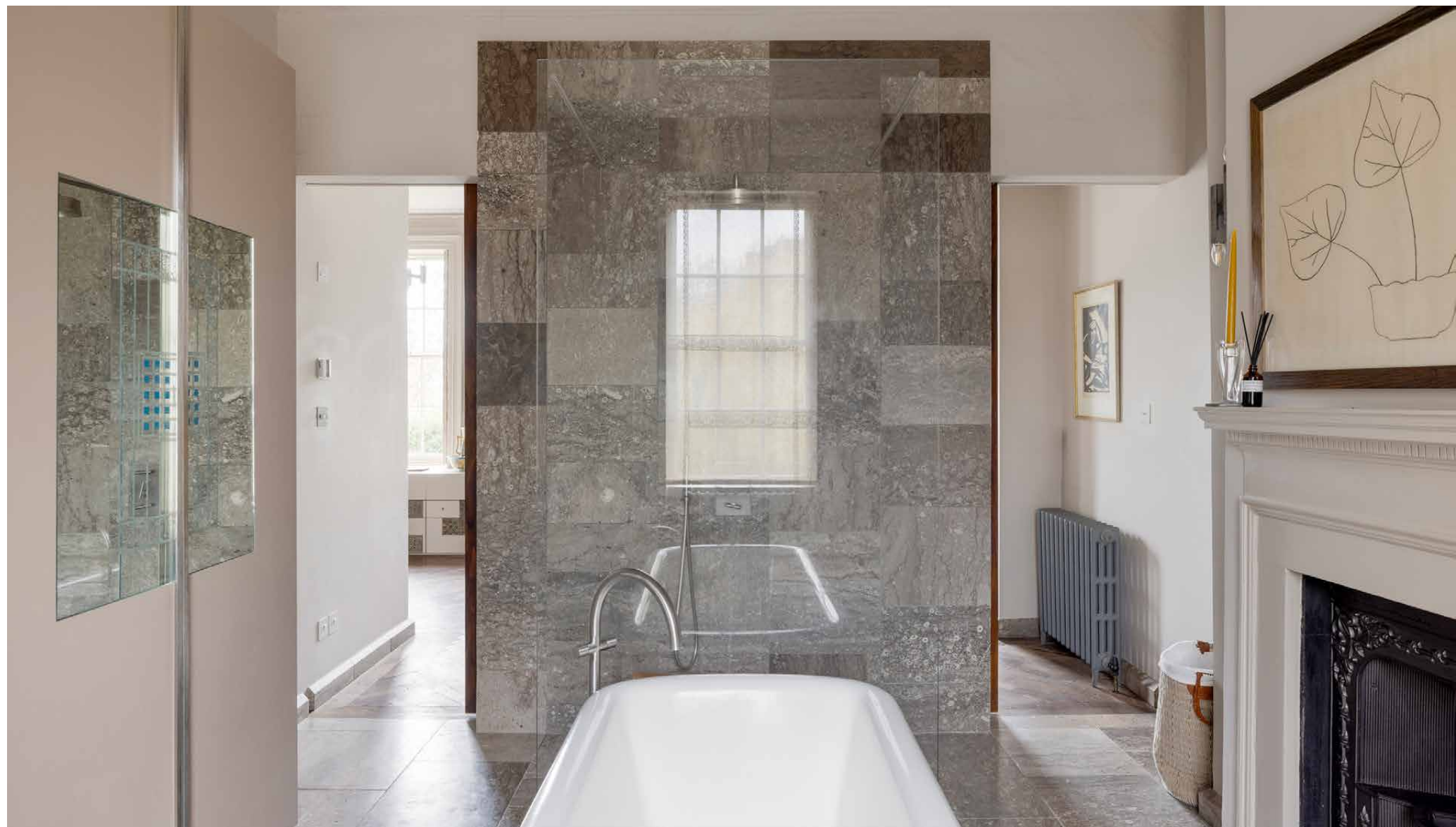






Bedrooms & bathrooms

Up on the first floor, the principal suite is a sanctuary of tranquillity. A floor-to-ceiling wood-clad headboard takes centre stage, complementing the parquet flooring that runs underfoot. Ornate cornicing makes a statement above, along with 20th century artwork and a modern fireplace. Two walkways lead to the room's en suite bathroom, where reclaimed marble lines the floors, and a standalone roll top bath sits in the middle of the room – the perfect spot for a soak after a day spent exploring.

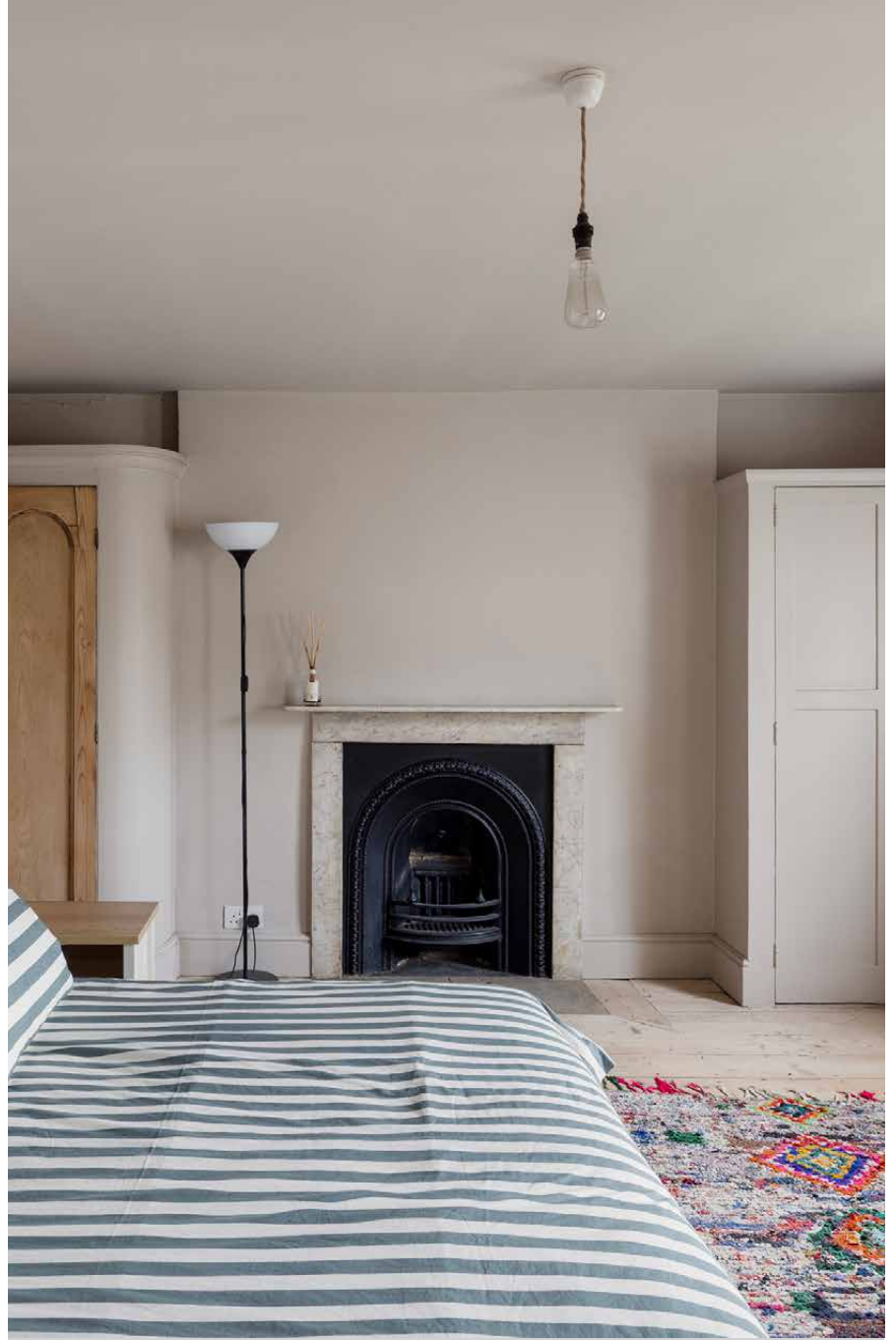


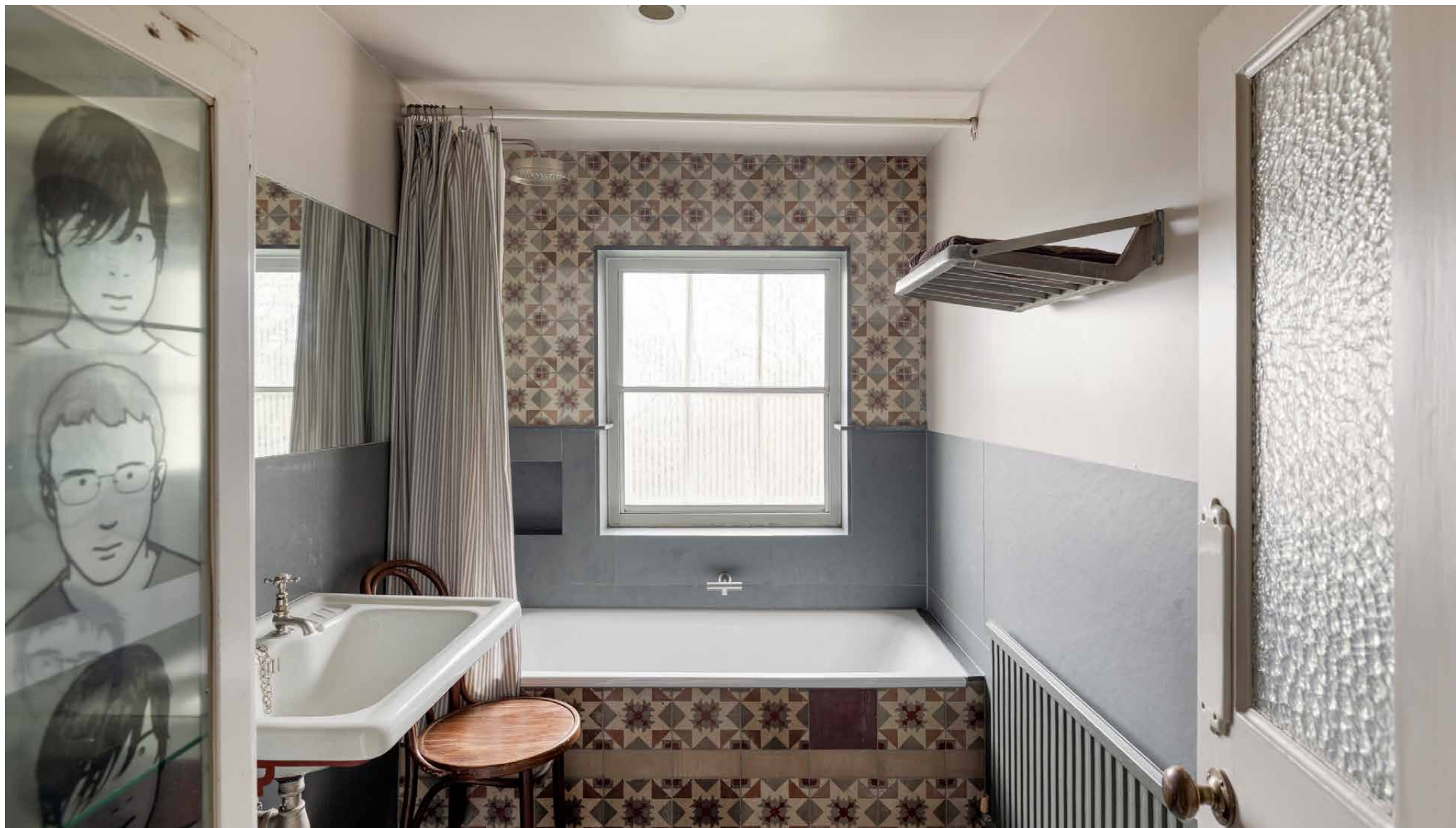


Another bedroom suite is found on the second floor, complete with pale wooden floorboards, a vibrant upholstered headboard and a bathroom-cum-dressing room, divided by a glass partition wall. A fireplace makes a statement, paired with a Victorian wall mounted basin. Two further bedrooms occupy this floor, served by a family bathroom, while on the top floor, a final bedroom sits comfortably under the eaves, along with a second family bathroom.











Outdoor spaces

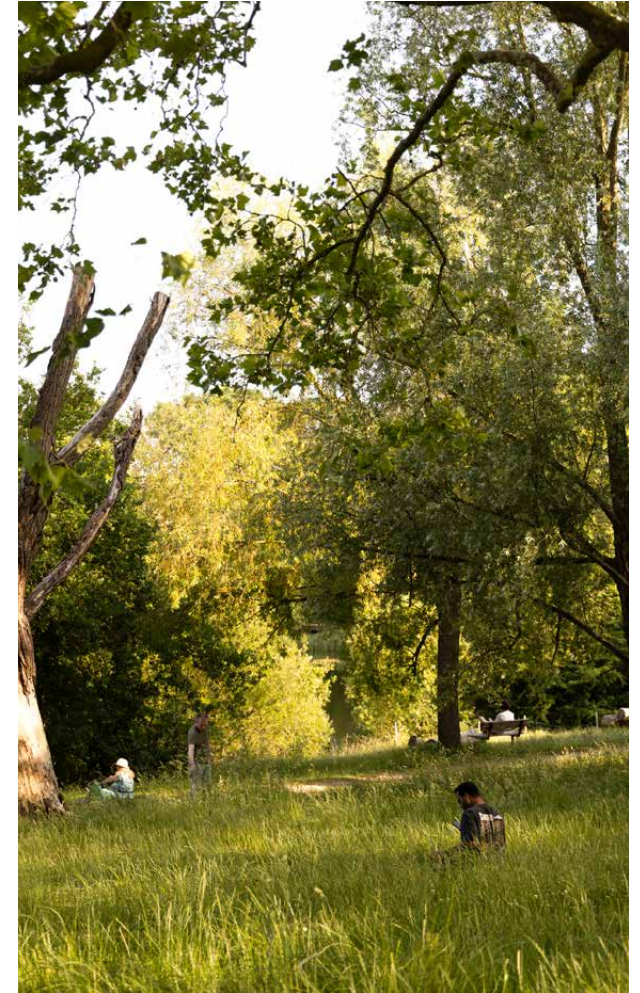
Inside spills through French doors onto the home's extensive patio, where outdoor seating sits primed for warmer months. The garden is as private as they come, with soaring evergreen trees and shrubs, while the flower beds and pots are filled with tropical greenery. A sky-lit garden cabin ensures al fresco hosting can continue whatever the weather, complete with a brushed gold kitchen and induction hob, bench seating and a log burning stove. The home also enjoys a roof terrace with soaring views across Hampstead Heath.

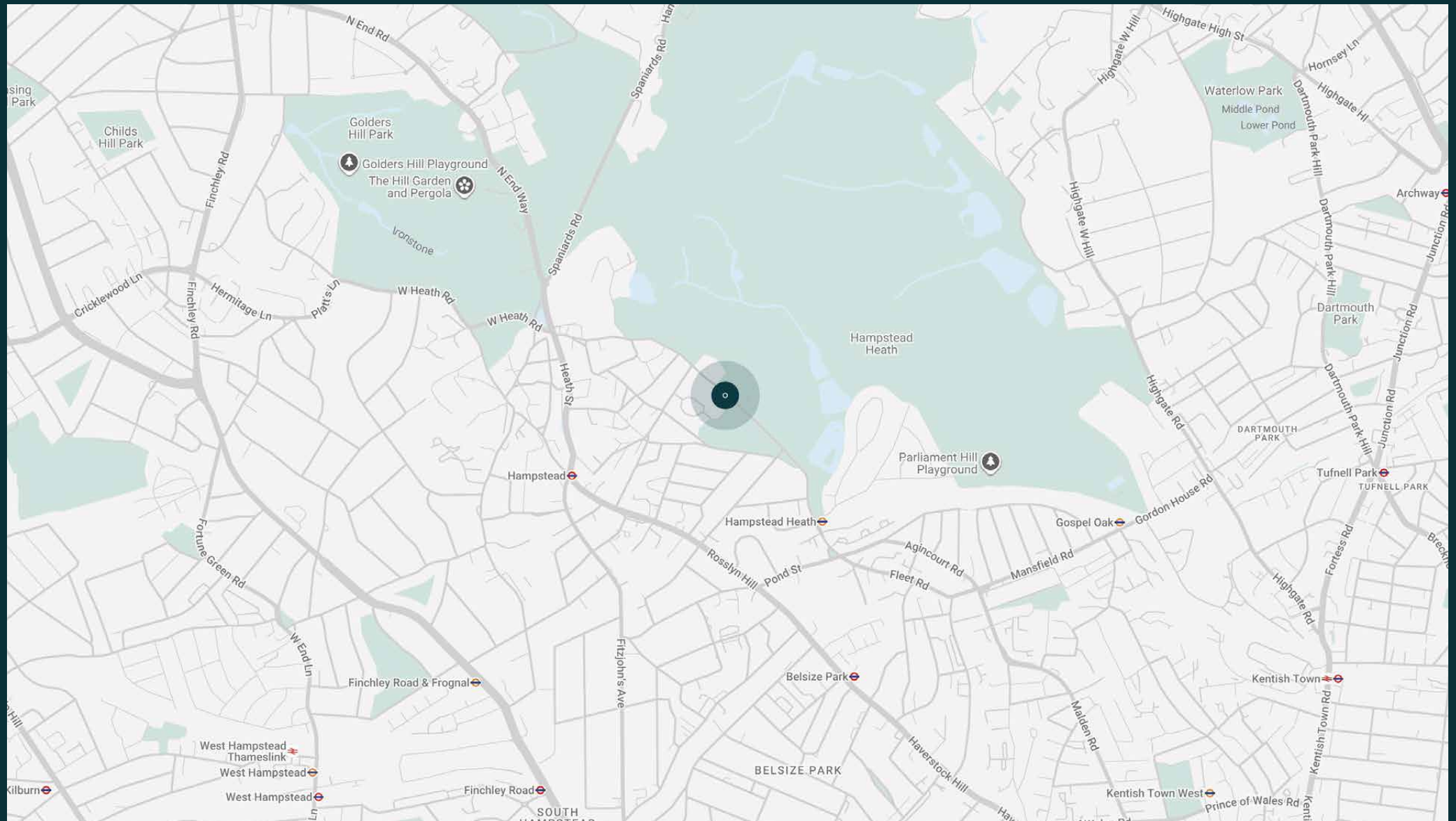




The neighbourhood

Hampstead is all about its Heath. Some 800 acres of wild green space, it's a place to press pause close to the heart of the city. Ramble up to Parliament Hill viewpoint for an unbeatable vantage point over London or brave a dip in one of the heath's outdoor bathing ponds. Reward your efforts with baked goods from Ginger & White followed by a wander through the cobbled streets of Hampstead Village and a drink at the Holly Bush. The neighbourhood certainly isn't short of excellent pubs – right on the doorstep you'll also find The Duke of Hamilton, home to the Hampstead Jazz Club. As you'd expect from such a storied neighbourhood, historic landmarks are also plentiful. Explore Fenton House and Garden, Keats House and Burgh House, or keep an eye out for the more than 50 blue and brown plaques that commemorate former famous residents. When you want to explore the rest of the city, hop on the Northern line or the Overground.

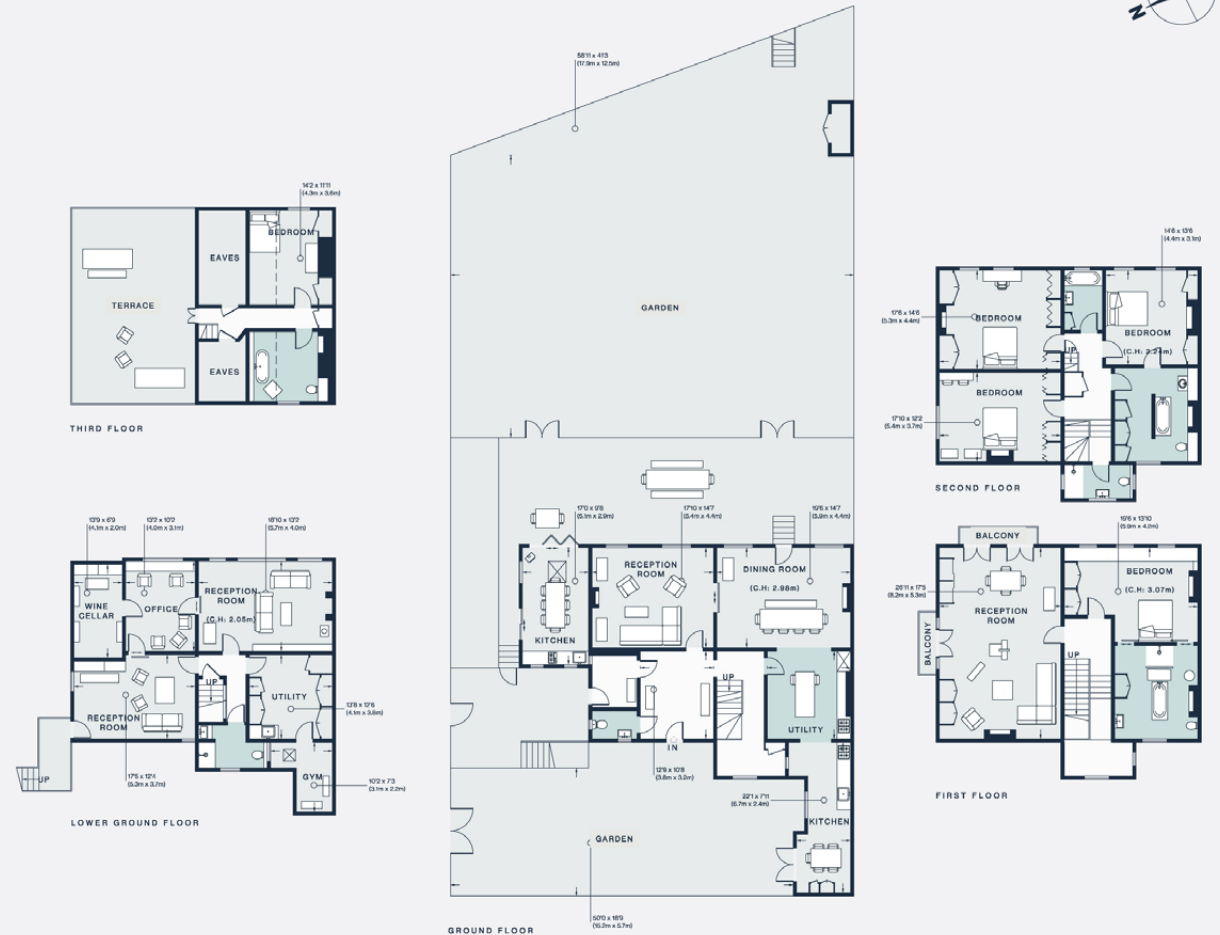




Property features

- Three reception rooms
- Eclectic dining room
- Tonal kitchen
- Principal bedroom suite
- Guest bedroom suite
- Three further bedrooms
- Two family bathrooms
- Shower room
- Cinema room
- Study
- Utility room
- Cloakroom
- Vast garden and roof terrace
- Onsite parking for three cars
- Electric car charging point

Approx. 491.8 sq m / 5,292 sq ft



Approx. Gross Internal Area = 5,292 sq ft / 491.8 sq m

Floor plans are for illustrative purposes only and not to scale. Compliant with RICS code of measuring practice.
Prepared for Domus Stay. Copyright © All Rights Reserved.

Guest & concierge services

Our concierge team are here to help guests settle in, seamlessly. Centre court tickets to Wimbledon, Premier League seats with the best views, Savile Row tailors on standby, or a private chef to cater to individual tastes – we aim to elevate every stay.

From the moment of booking with us, each guest has a single point of contact to finesse the details. Our statement spaces are just the starting point – to ensure everyone feels at home, our rates include:

-
- Weekly housekeeping
 - Flexible check-in/out
 - Luxury linens and Bamford toiletries
 - Legal compliance on all our homes
 - A personal welcome and arrival essentials
 - Unlimited access to guest services and tailored experiences
 - Professional inventory inspection before and after every stay
 - Access to a curated portfolio of sole agency properties



domus stay.

Please get in touch if you have any questions
or require any further information.

hello@domusstay.com

+44 (0)20 8168 8880

The property particulars are a guide not statements. Descriptions, photographs, and plans are for guidance only. The Property is offered "subject to contract and references". No warranties, representations, License or Tenancy is given by Domus Stay. Our full disclaimer together with trading names and our Privacy Policy is shown on our website

© Domus Stay 2025. All rights reserved.

