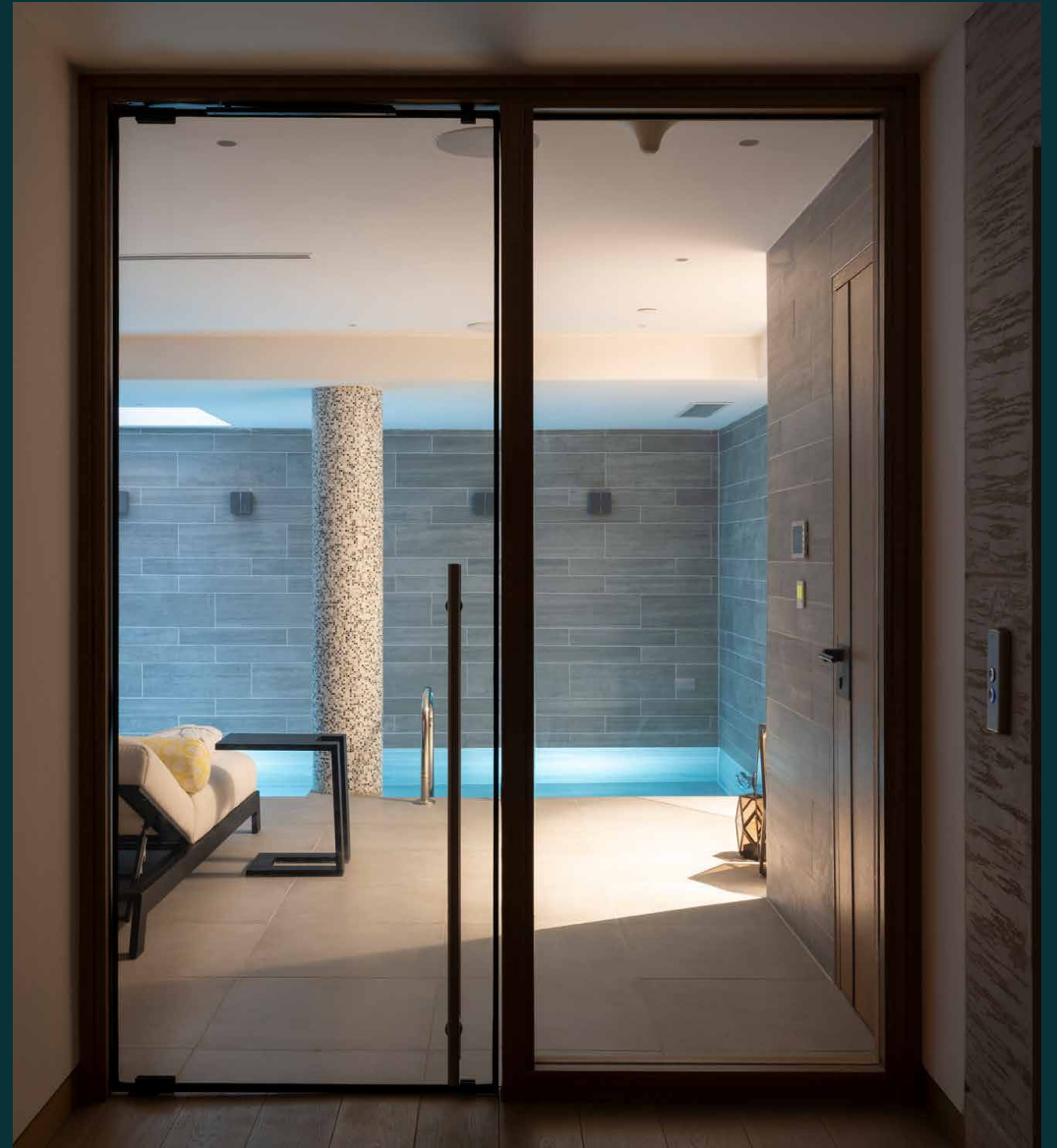


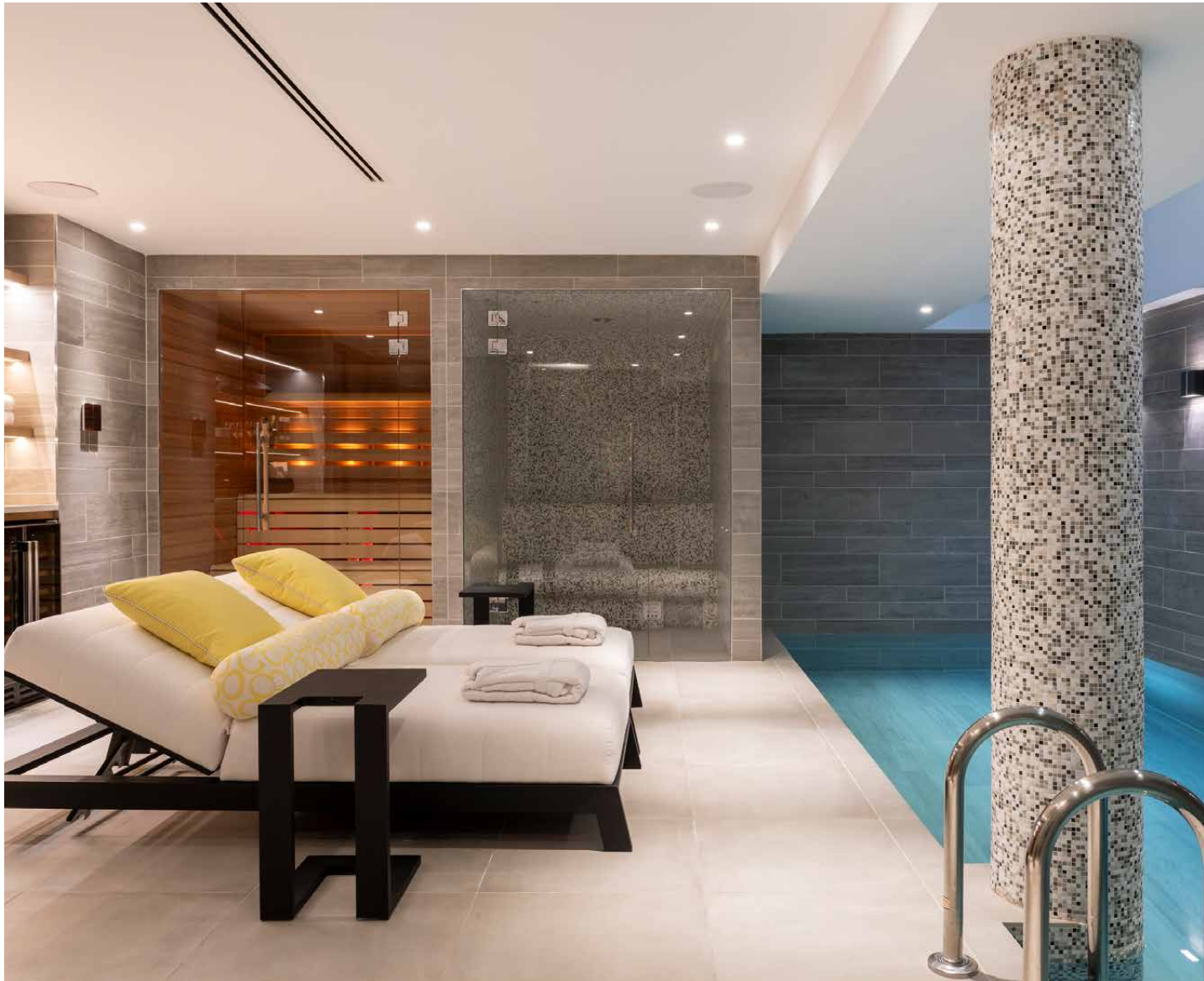
domus
stay.

Down Street Mews

MAYFAIR

4 Bedrooms, 5 Bathrooms
For 8 guests



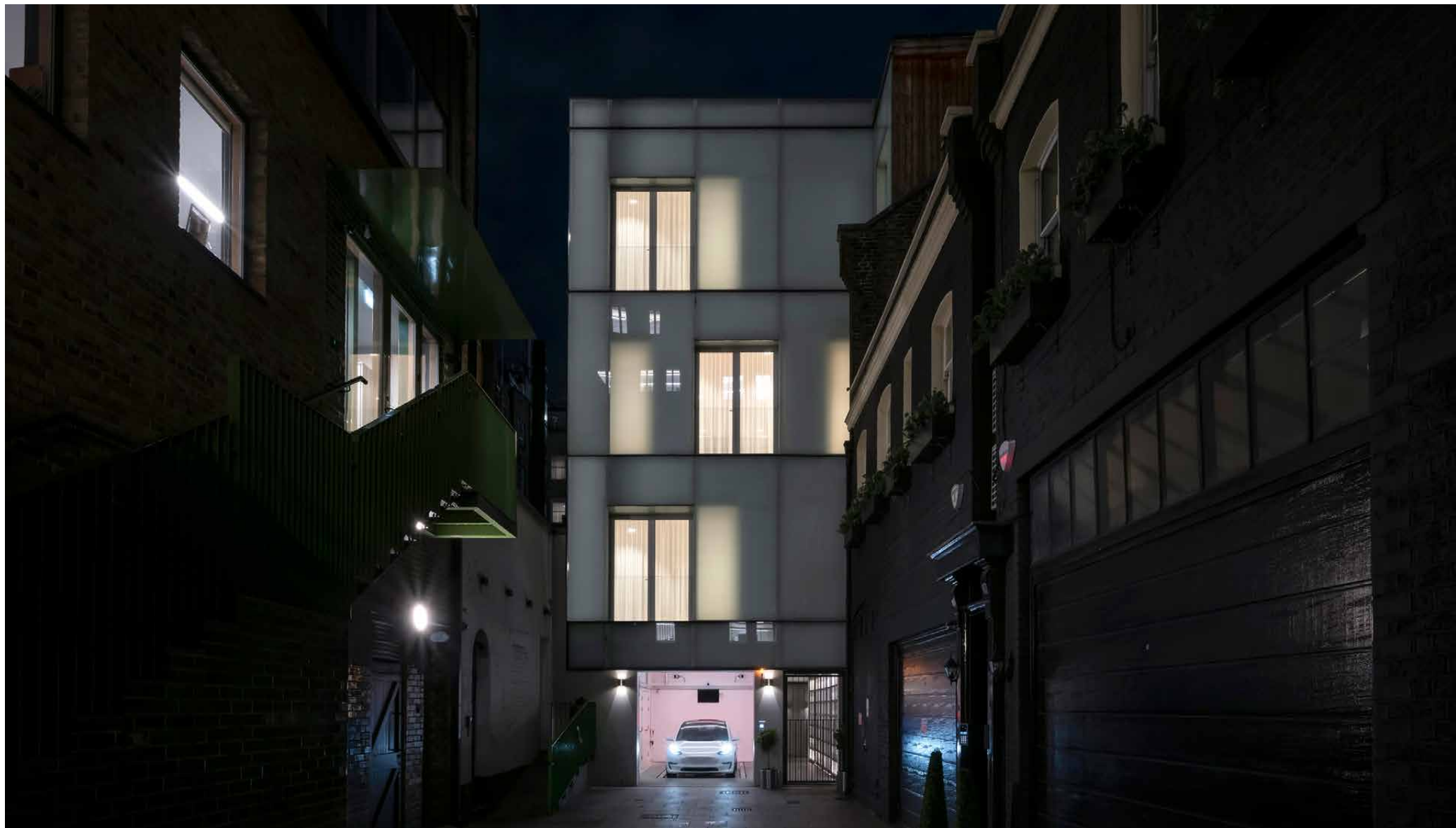


Arranged over seven floors, this four-bedroom luxury Mayfair house to rent pairs indulgent design with space to entertain.

Inspired by the iconic La Maison de Verre in Paris, this unique glass-clad home is a secluded retreat moments from Hyde Park. The home was masterminded by esteemed architectural practice Scott Brownrigg, incorporating high ceilings and Juliet balconies throughout.







The living spaces

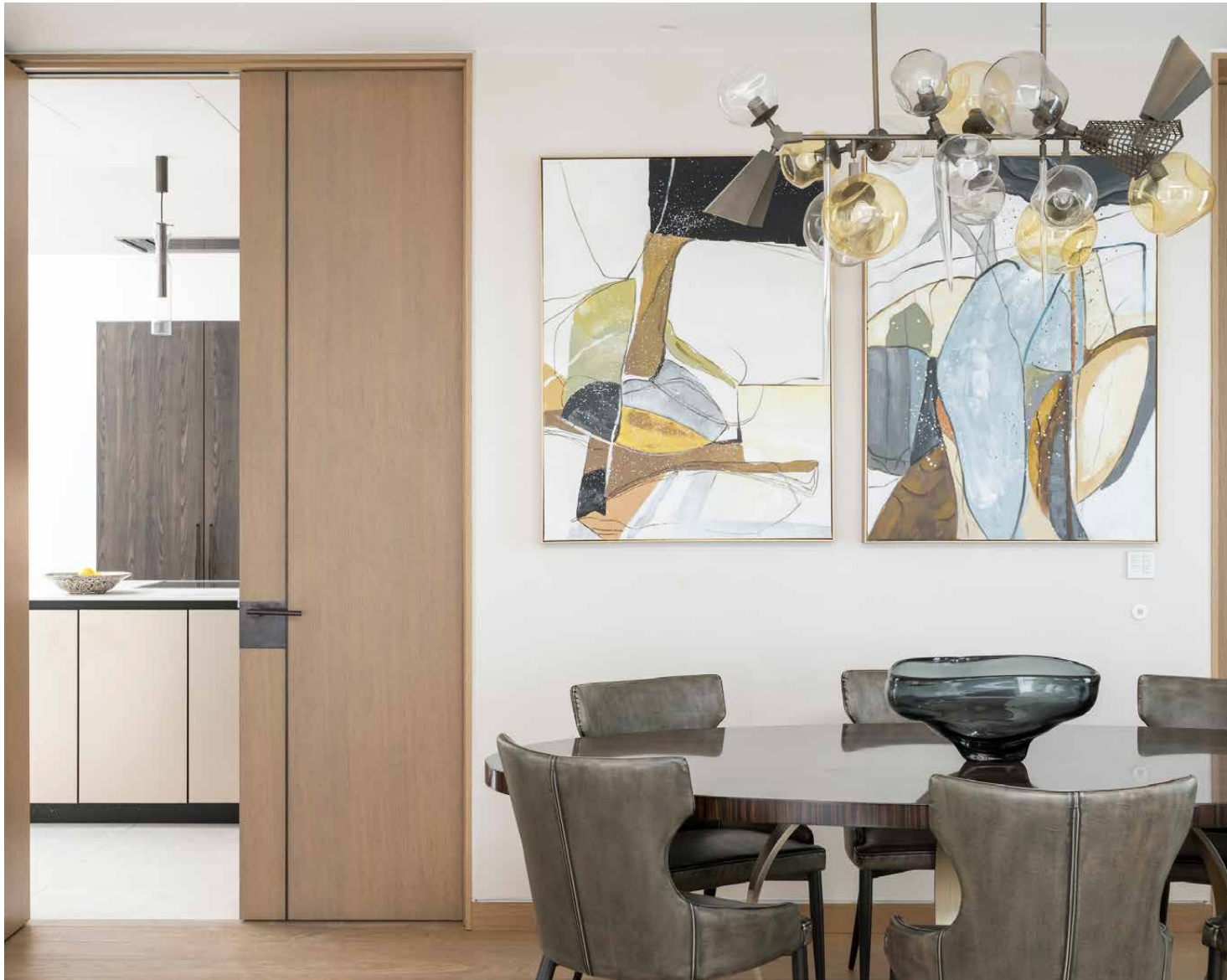
An exemplar of inverted living, a lift serves all seven levels and provides immediate access to the second-floor reception room and study, while the bedrooms take the lower floors. Sink into the sofa backdropped by ornaments and curios in this social space. Optimised for conversation, this room is ideal for family get-togethers.

Set on the top floor, the kitchen draws together an indulgent palette of materials. A waterfall island forms the centrepiece while dark wood cabinetry sets a distinguished tone. Prepare a meal using integrated Gaggenau appliances then dine at the smooth white marble breakfast bar. Afterwards, pour a glass of wine from the cooler to enjoy on the sofa, below the expansive skylight.



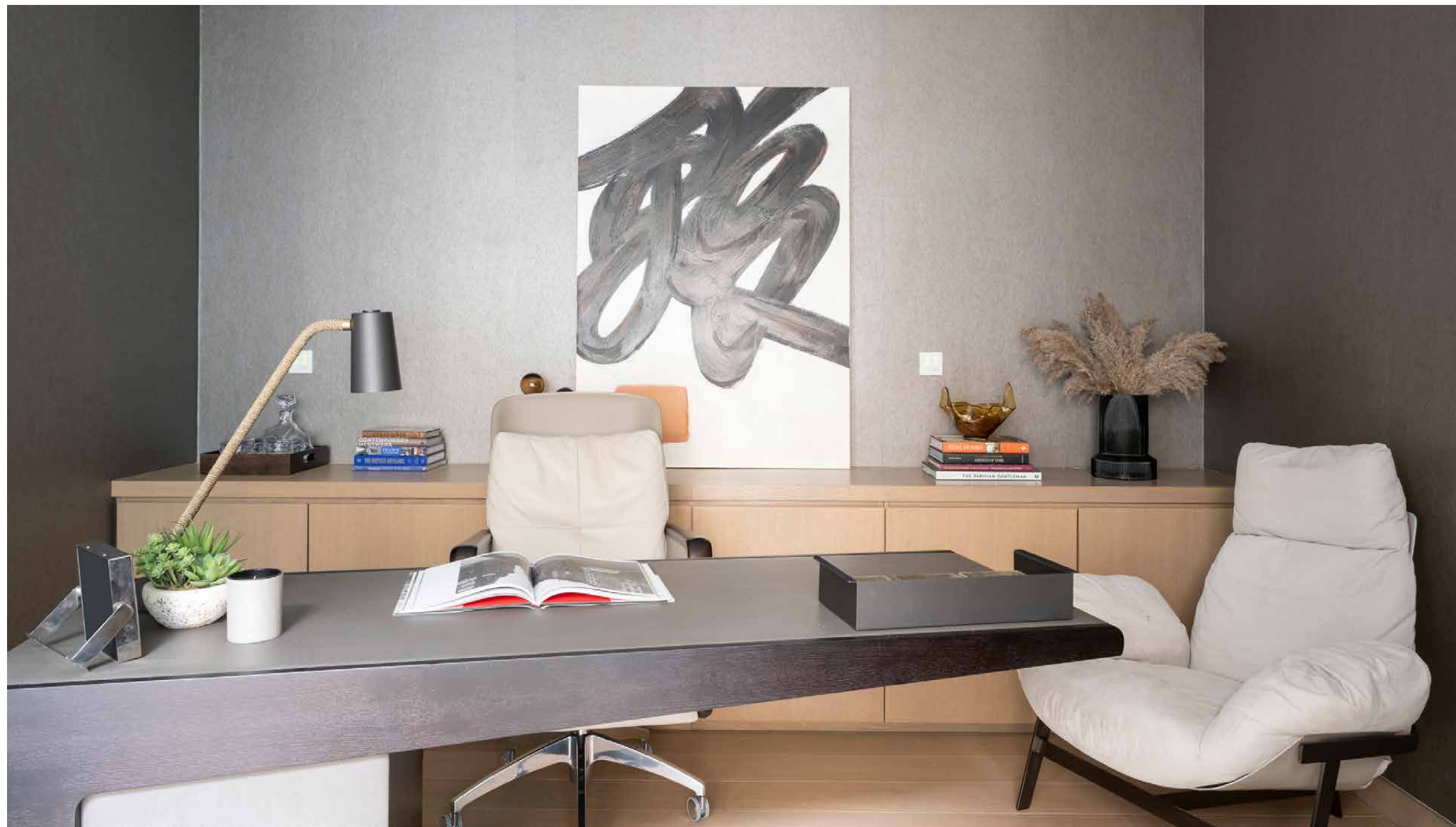


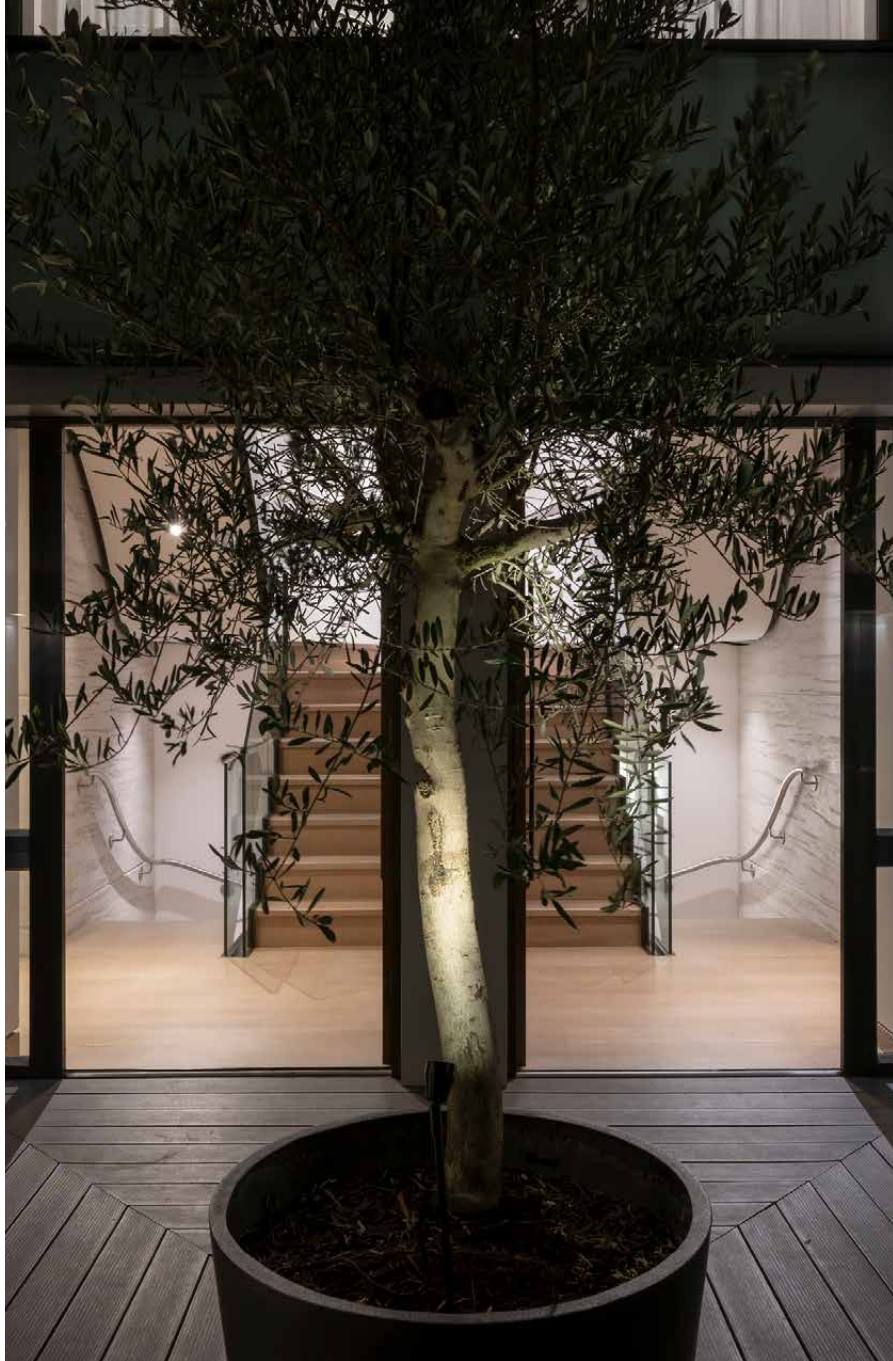




Double doors grant access to the open-plan dining and reception room. A sculptural chandelier illuminates a table with seating for six. Hardwood flooring flows into the living area. This considered, convivial space is crowned with a central skylight that showers the room with sunshine, creating an uplifting atmosphere. Elsewhere, a generous cinema room comes complete with recessed lighting, plush fabric walls and a popcorn machine.

The home also comes with a bespoke-designed four vehicle car stacker, accessed via remote fob through electronic gates.

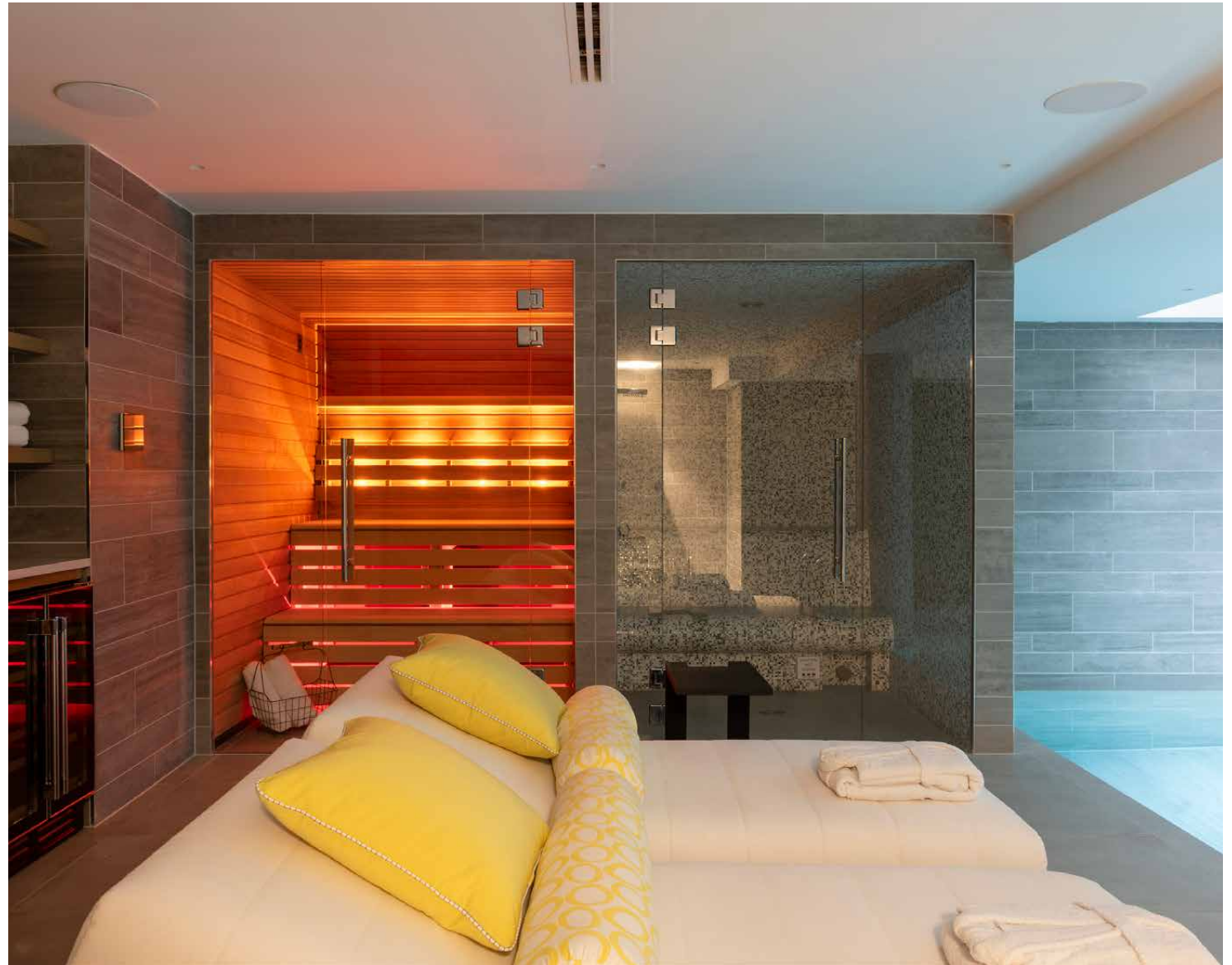






Wellness at home

Across the uppermost basement, discover a games room and a decked courtyard with a towering living wall. There's also a fully equipped gym prepped for workouts; post-sweat, head down to the spa and take a dip in the pool. Afterwards, enjoy ultimate relaxation courtesy of the sauna and steam room.

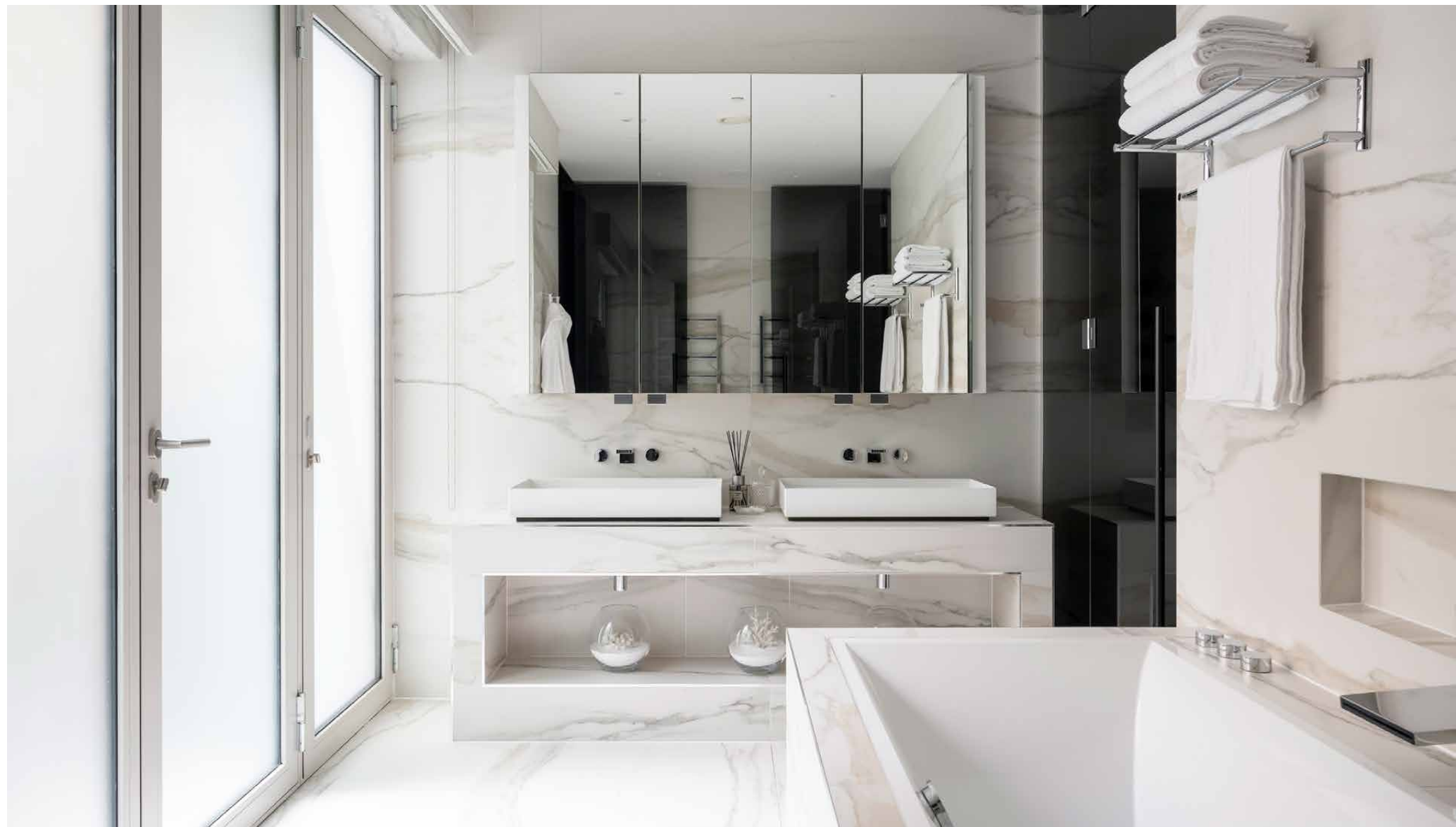






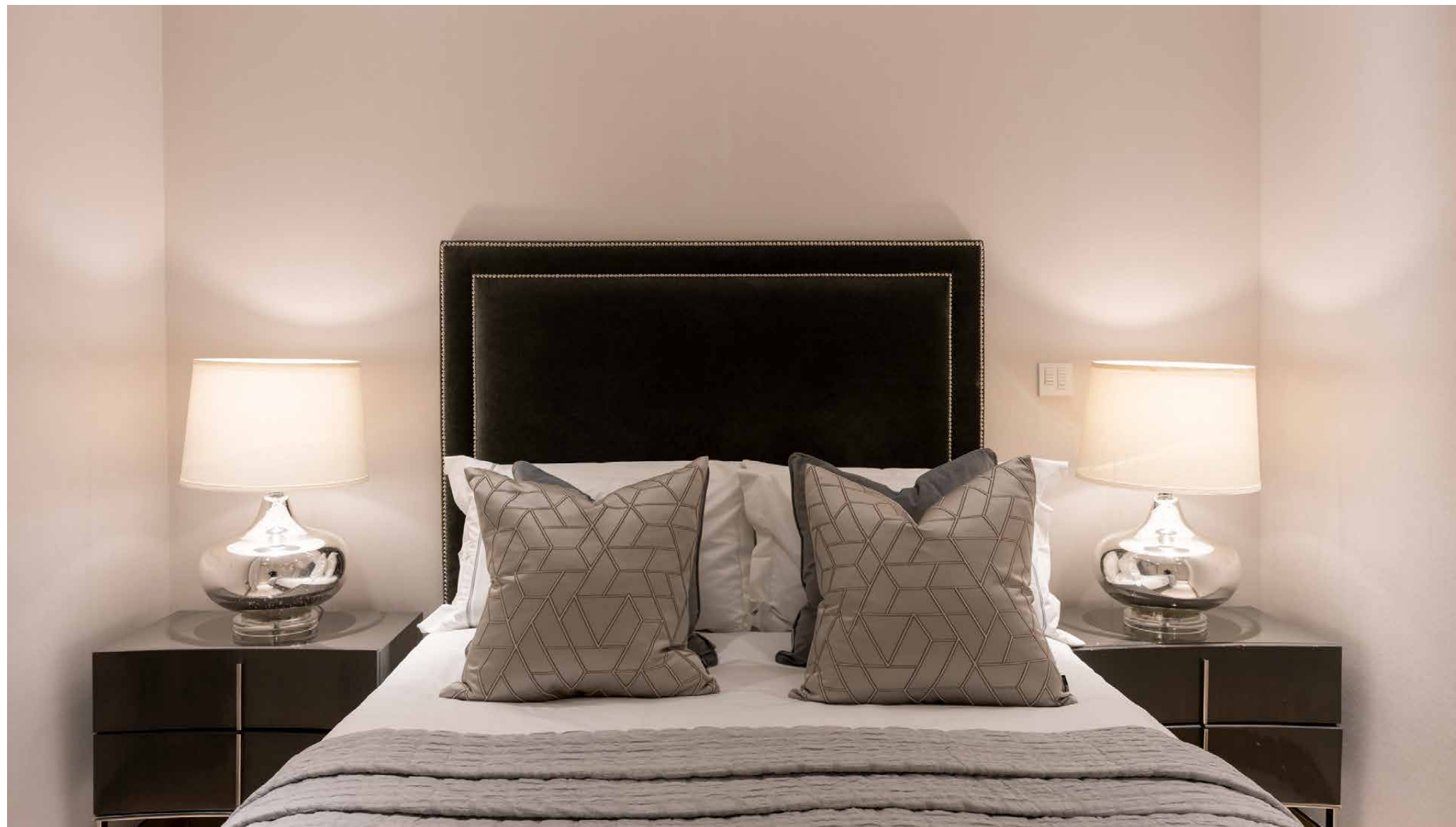
Bedrooms & bathrooms

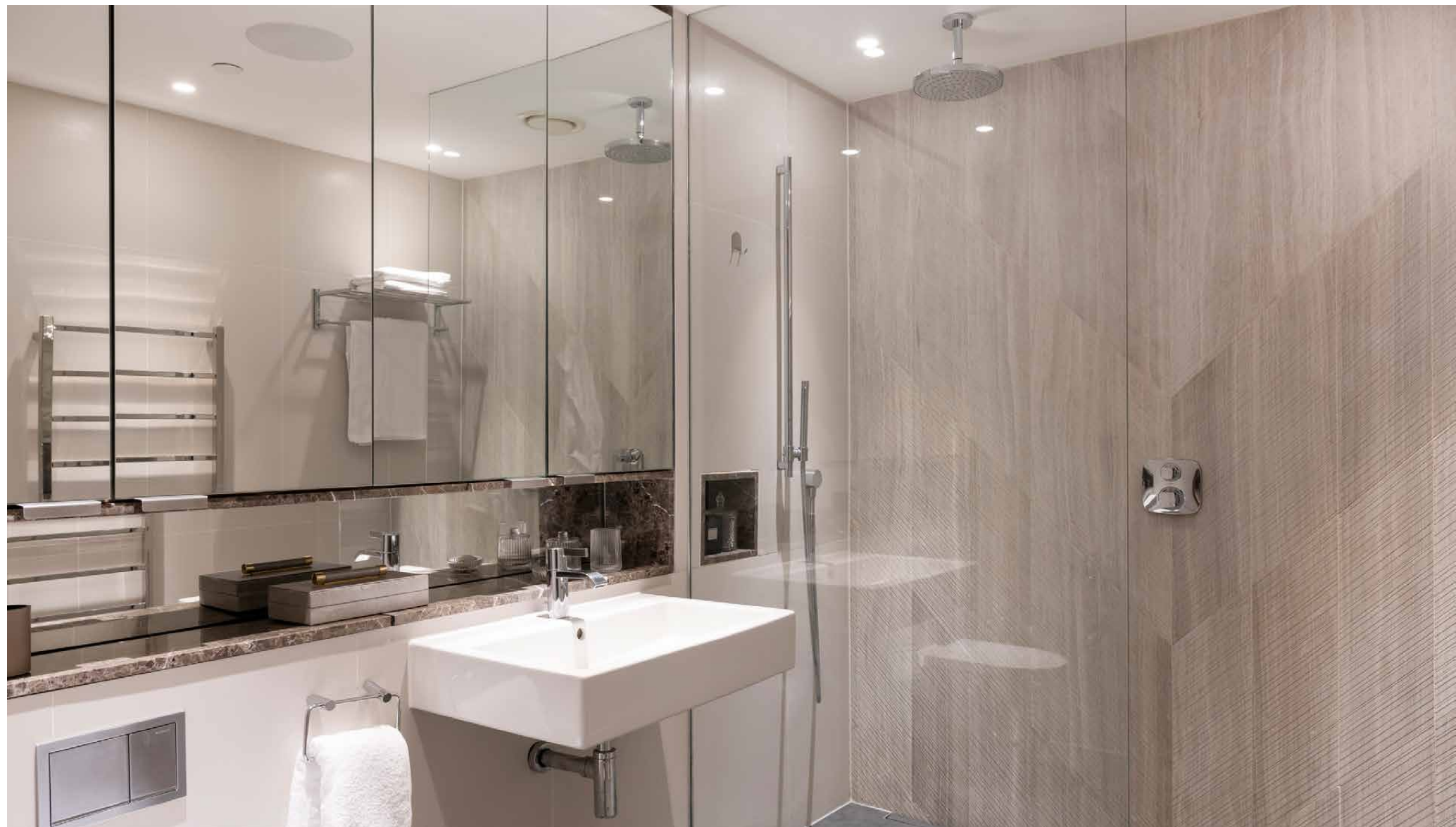
A sense of luxury has been cultivated within the principal bedroom. Pendant lights flank the sleeping area. An extension of the towering headboard, a plush feature wall creates a decadent atmosphere. Dominating the first floor, this space benefits from a built-in vanity area and a walk-in wardrobe. Its marble-wrapped bathroom enjoys a dual vanity, walk-in shower and separate bathtub. Three further bedrooms incorporate en suite bathrooms and integrated storage.









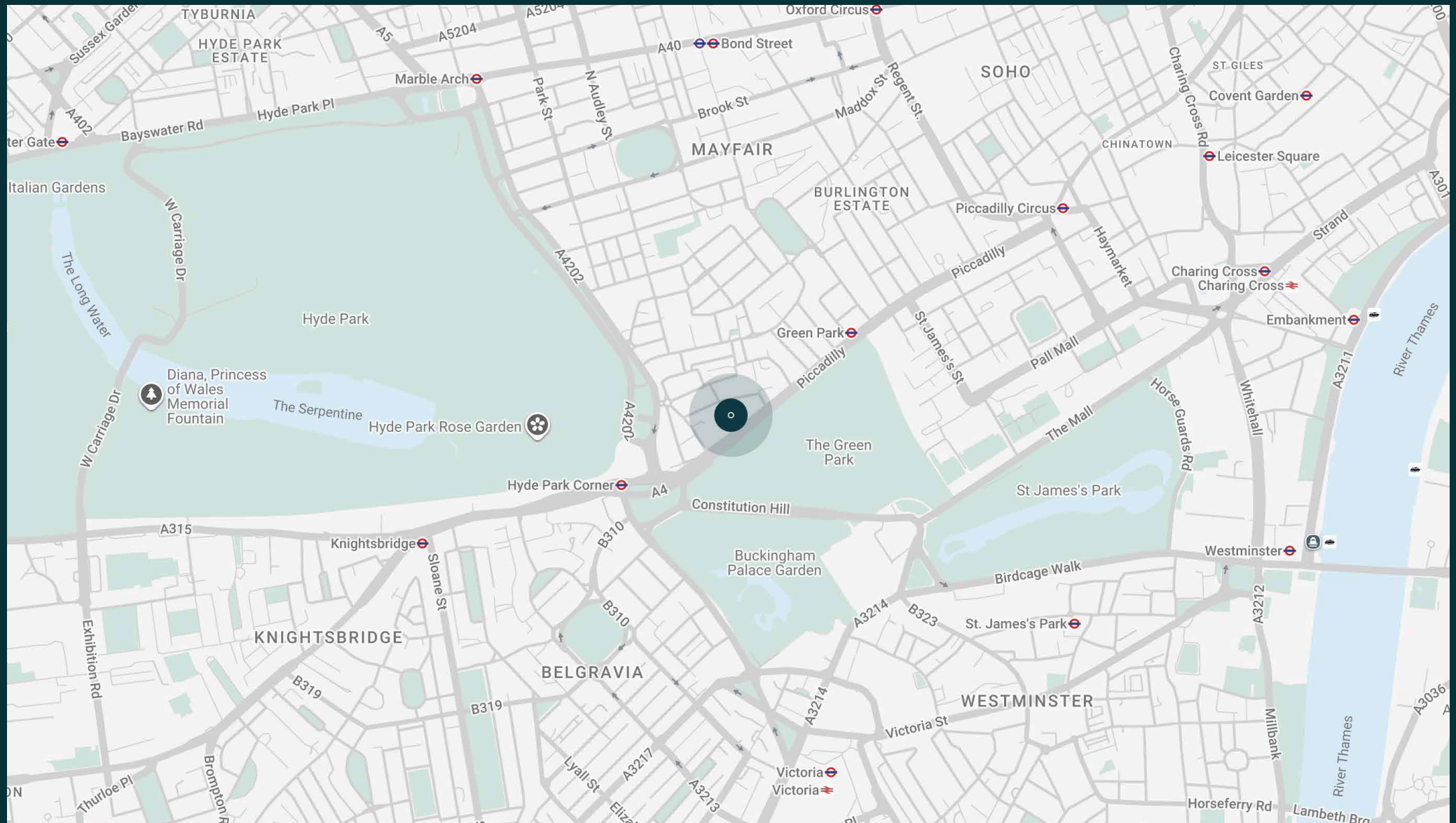


The neighbourhood

London's most prestigious neighbourhood, Mayfair draws together world-class cafes and restaurants.

Start your day with sweet pastries from Le Deli Robuchon, caffeinate at SHOT then head to Oxford Street for retail therapy. From your front door, walk to five Michelin-starred restaurants in as many minutes, including HIDE and Sushi Kanesaka. The area is also replete with wide open spaces. Reach Green Park in two minutes. The lawns and lakes of Hyde Park are also within strolling distance. Stop by COYA on the way home for Peruvian fare. Amble home in one minute.

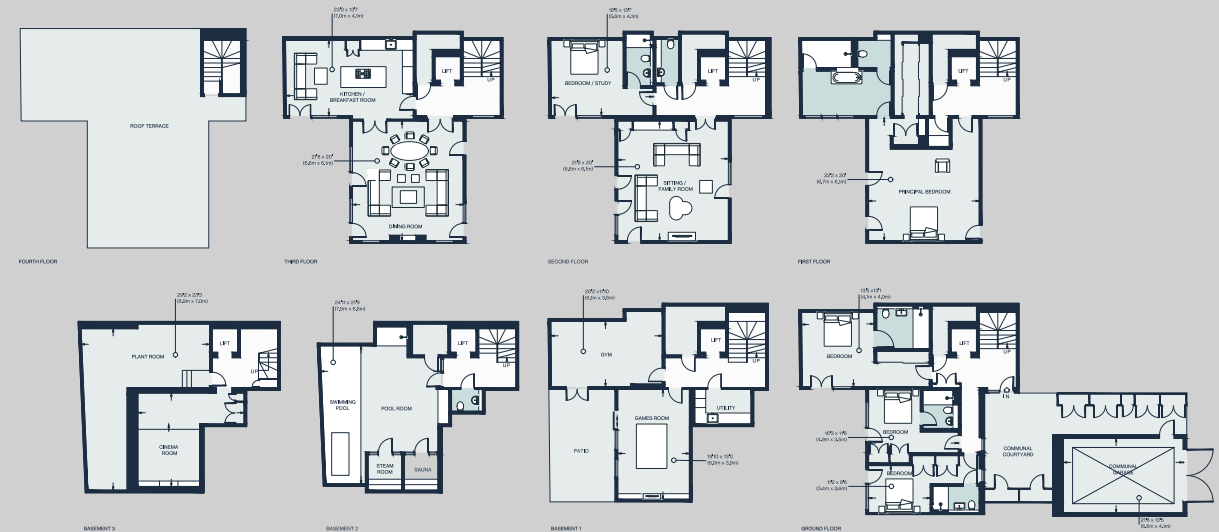






Property features

- Principal bedroom suite
- Three guest bedroom suites
- Formal reception room
- Contemporary kitchen
- Open-plan dining and reception room
- Games room
- Cinema room
- Swimming pool, steam room and sauna
- Gym with a patio
- Plant room
- Lift
- Two cloakrooms
- Communal courtyard and garage
- Roof terrace
- City of Westminster



Approx. 6,836 sq ft / 635 sq m

Approx. Gross Internal Area = 4,105 sq ft / 381.4 sq m
Basement = 2,439 sq ft / 226.6 sq m
Communal Garage = 292 sq ft / 27.1 sq m
Total = 6,836 sq ft / 635.1 sq m

Floor plans are for illustrative purposes only and not to scale. Compliant with RICS code of measuring practice.

Guest & concierge services

Our concierge team are here to help guests settle in, seamlessly. Centre court tickets to Wimbledon, Premier League seats with the best views, Savile Row tailors on standby, or a private chef to cater to individual tastes – we aim to elevate every stay.

From the moment of booking with us, each guest has a single point of contact to finesse the details. Our statement spaces are just the starting point – to ensure everyone feels at home, our rates include:

-
- Weekly housekeeping
 - Flexible check-in/out
 - Luxury linens and Bamford toiletries
 - Legal compliance on all our homes
 - A personal welcome and arrival essentials
 - Unlimited access to guest services and tailored experiences
 - Professional inventory inspection before and after every stay
 - Access to a curated portfolio of sole agency properties



domus stay.

Please get in touch if you have any questions
or require any further information.

hello@domusstay.com

+44 (0)20 8168 8880

The property particulars are a guide not statements. Descriptions, photographs, and plans are for guidance only. The Property is offered "subject to contract and references". No warranties, representations, License or Tenancy is given by Domus Stay. Our full disclaimer together with trading names and our Privacy Policy is shown on our website

© Domus Stay 2025. All rights reserved.

