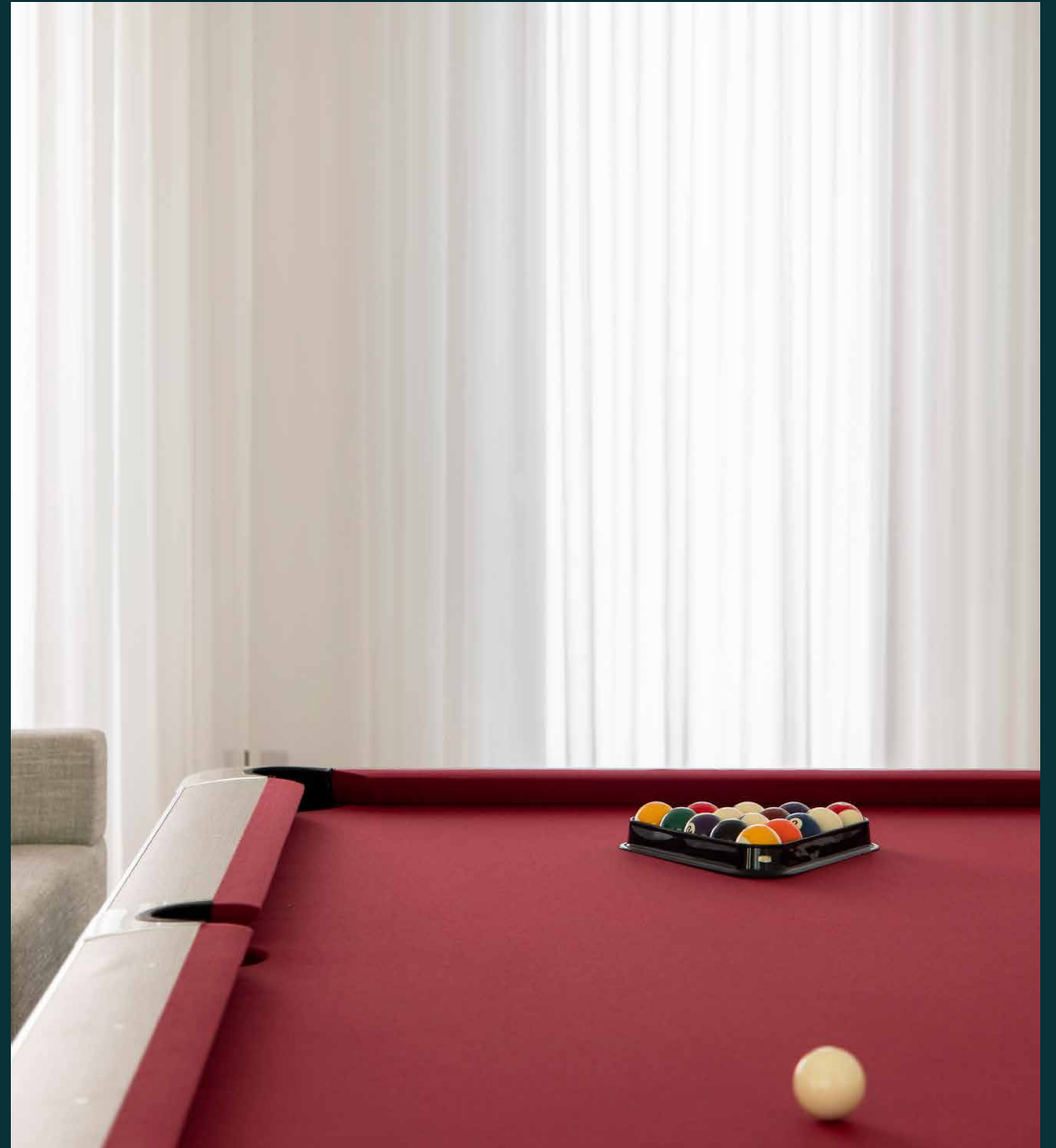


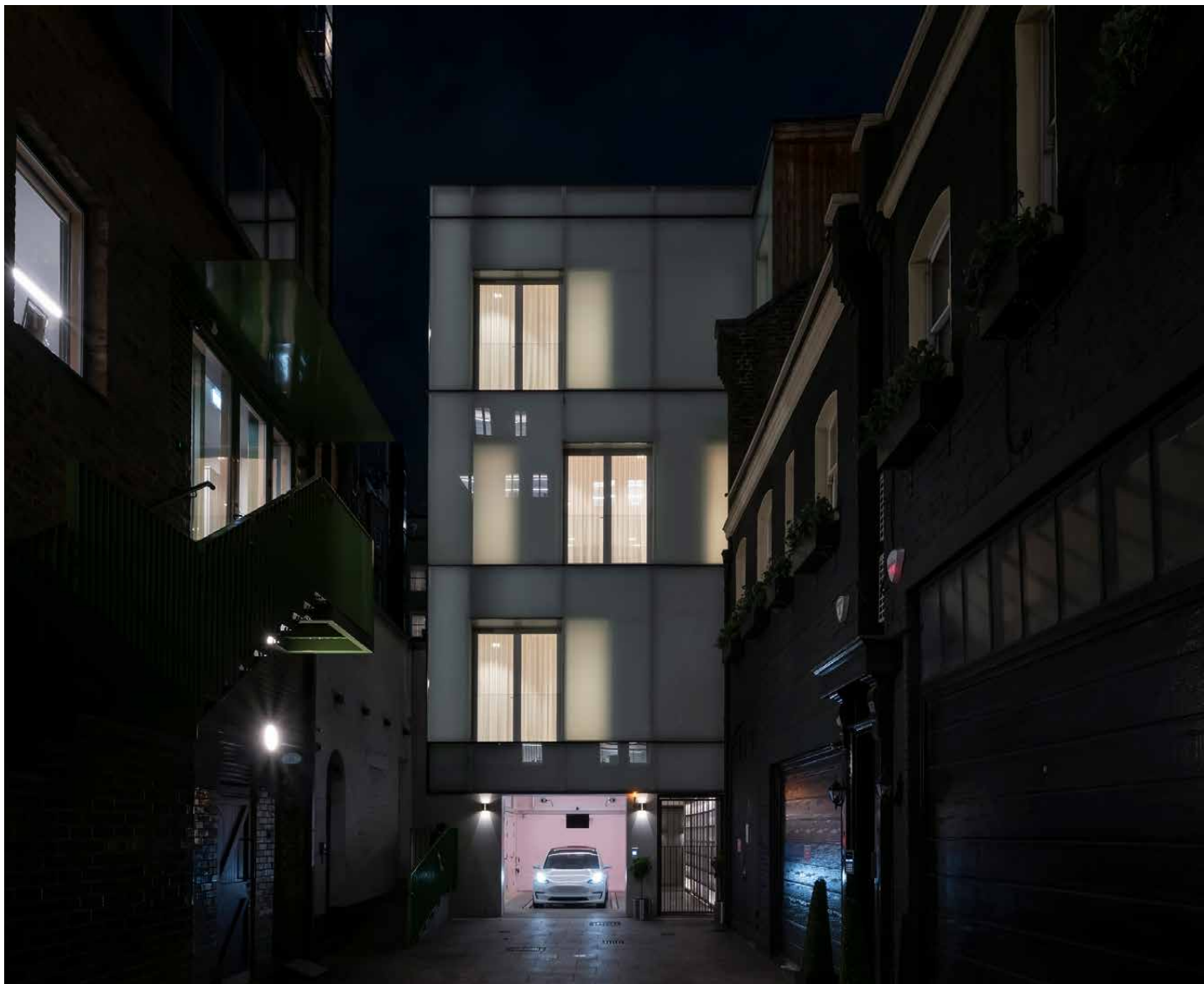
domus
stay.

Down Street Mews II

MAYFAIR

4 Bedrooms, 5 Bathrooms
For 8 guests





This striking four-bedroom short-term rental house in Mayfair combines seven floors of immaculate modernist design.

Crafted by architects Scott Brownrigg, Down Street Mews draws its inspiration from the renowned La Maison de Verre in Paris. Forming a striking visual interplay with the surrounding buildings, its glazing reflects an image of the traditional façades opposite. Inside, interiors are equally impressive – seven floors of sprawling social settings include a cinema room and a wellness level with a Hamman, gym, sauna and steam room.

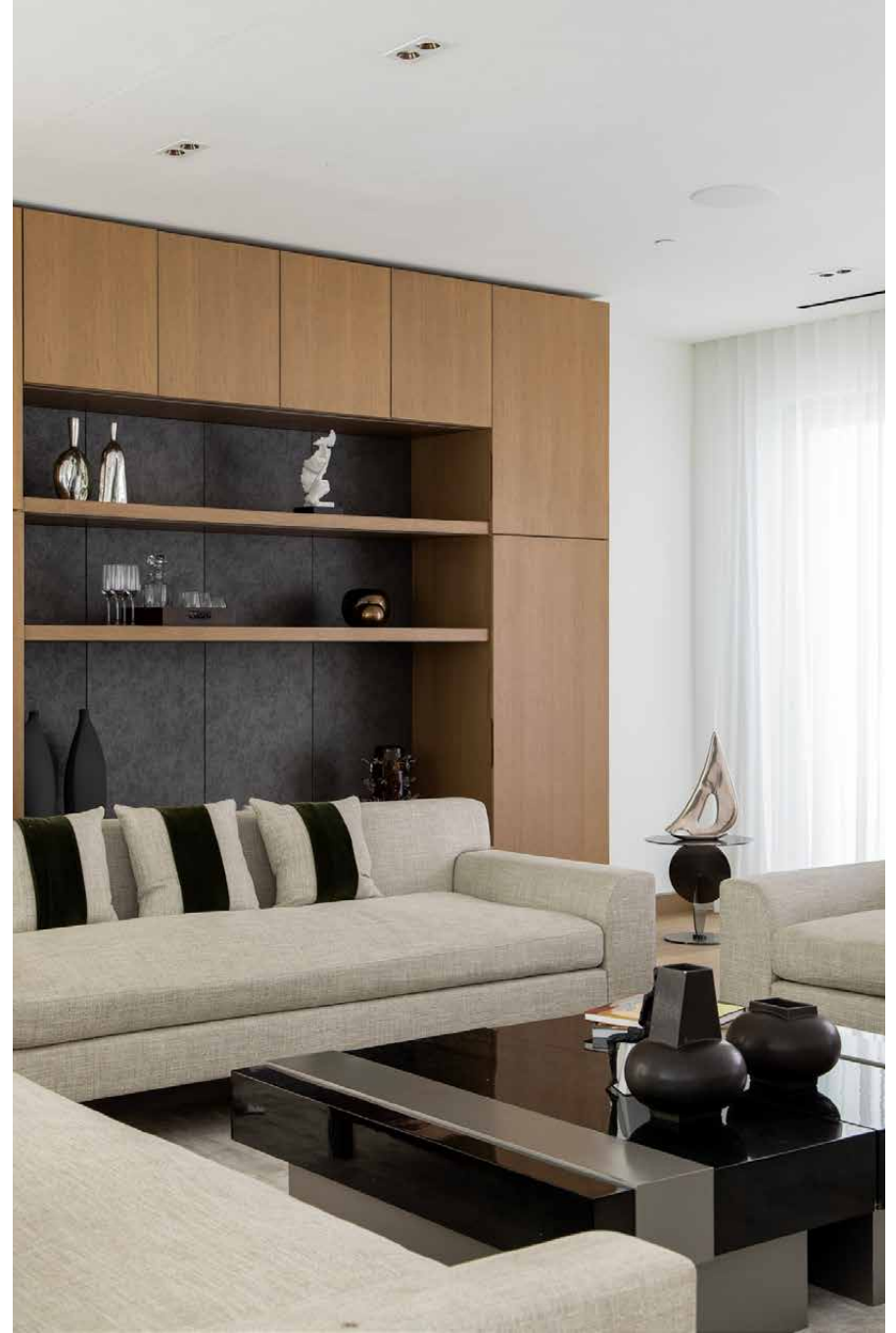


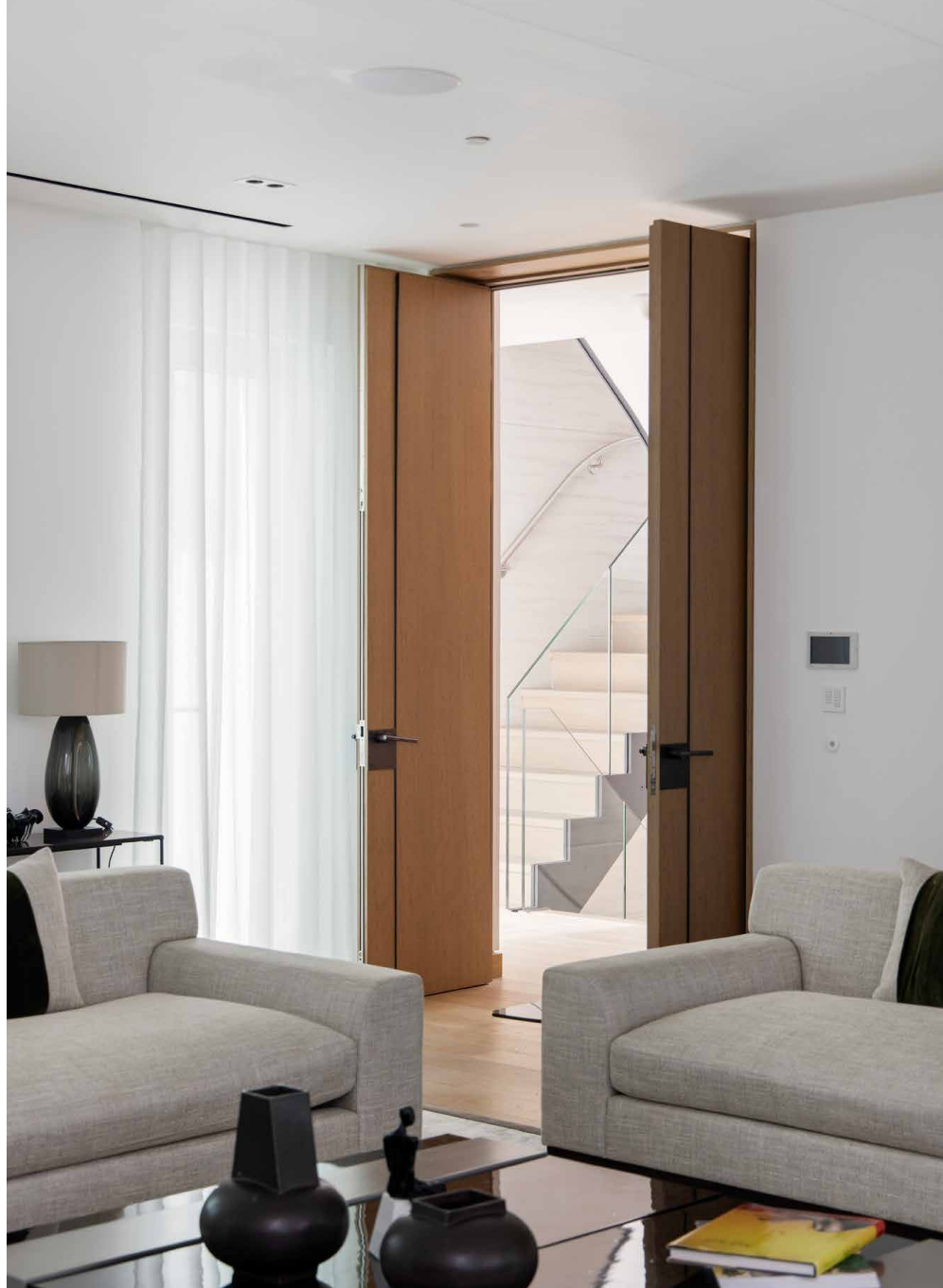
The living spaces

A discreet gated mews leads to the entrance, where a lift connecting all seven floors takes you directly to the third floor living spaces. Underfloor heated solid oak flooring sweeps through to an expansive open-plan kitchen, dining and reception room – soft textures and soothing tones striking a balance with the home's contemporary framework. A showpiece of linear design unfolds in the Poggenpohl kitchen, where precise lines and handleless cabinetry form a spotless space to cook. Poised for culinary creations, integrated Gaggenau appliances pair with Neolith worktops.







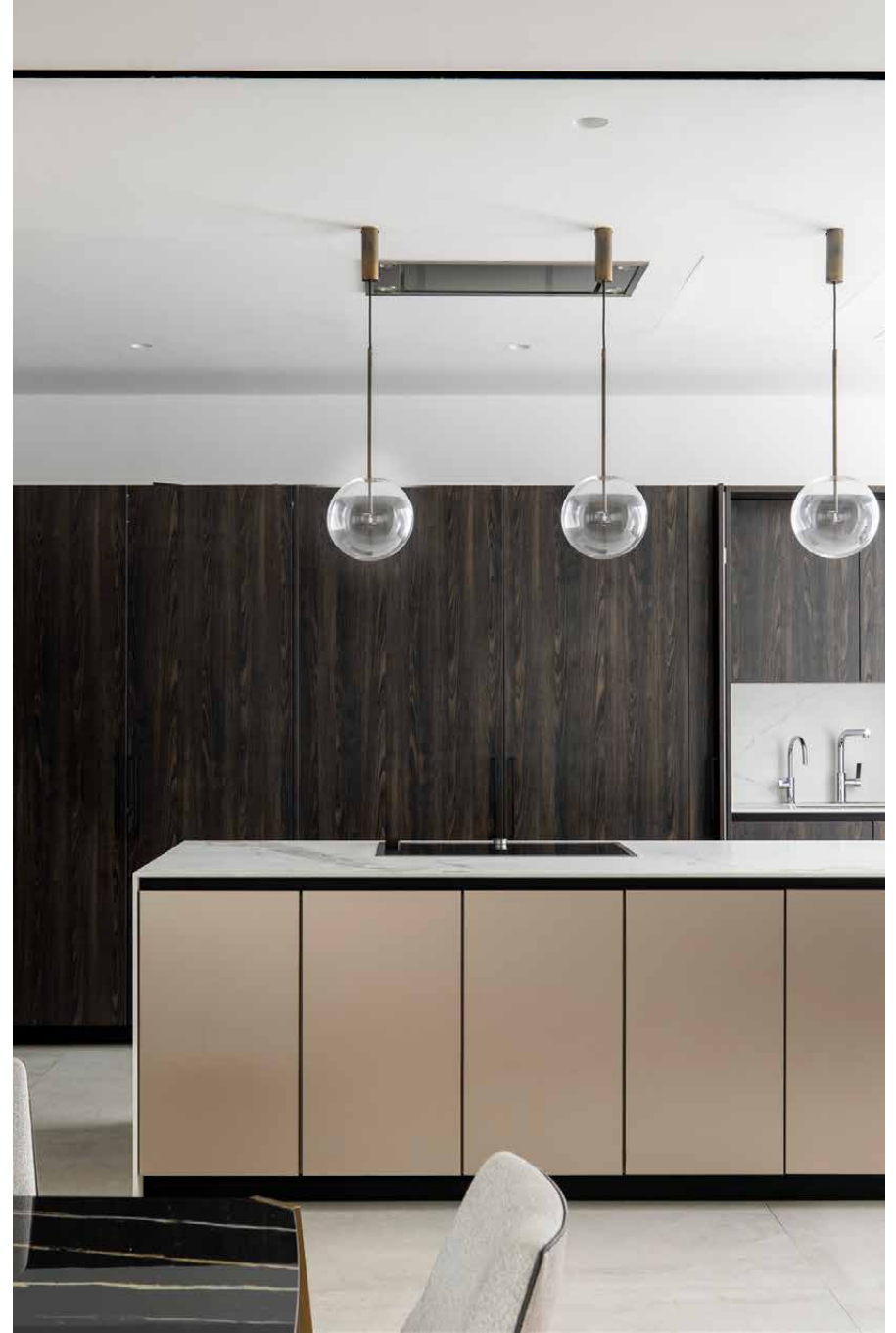


“An additional reception room invites more laid back socialising. Lounge over one of the three thoughtfully arranged sofas or make use of the pool table.





Illuminated from all angles, swathes of light lend an uplifting ambiance to the minimalist design. A black and bronze abstract light overhangs a dining table with seating for eight, while a skylight above sets the scene for sunlit morning coffees. Down polished concrete steps, an additional reception room invites more laid back socialising. Lounge over one of the three thoughtfully arranged sofas or make use of the pool table. Primed for movie marathons, a cinema room on the lower basement floor comes with a bespoke system from James + Giles.



Bedrooms & bathrooms

Arranged across multiple levels, four bedroom suites exude a sense of sophistication. In the principal bedroom suite, a pared-back palette lets the lighting take centre stage. Mornings feel easy here, with natural light cascading through double doors to a Juliet balcony. Come evening, adjust the ambiance to your taste with the lighting controls. Bathe in opulence in the en suite bathroom, every inch wrapped in smooth white marble. Sink into an expansive bathtub or make the most of the pressurised water system in the rainfall shower. A spacious walk-in wardrobe helps you get ready for the day. Taking on equally tranquil tones, three further bedrooms come with en suite bathrooms.

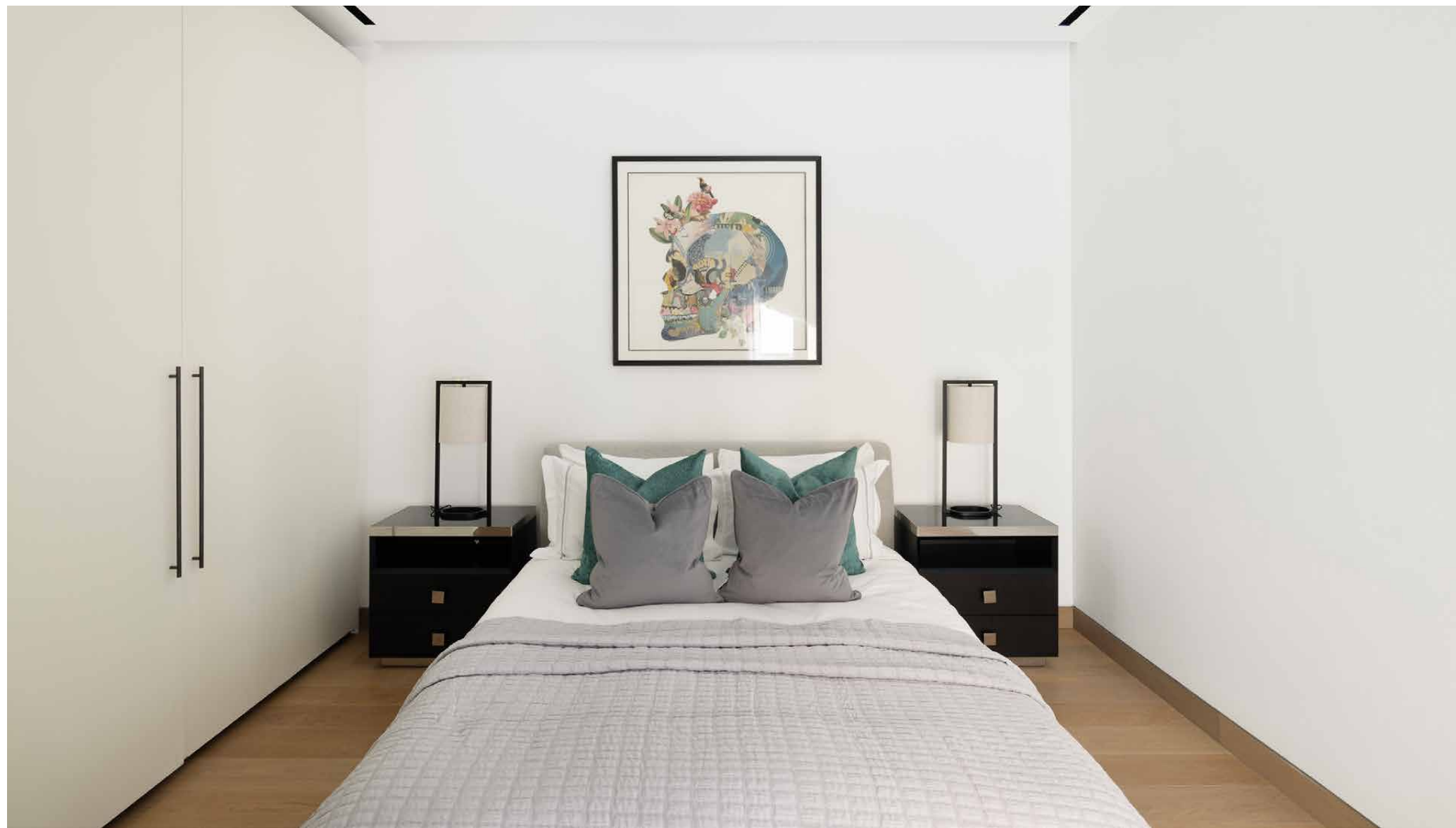


















Wellness at home

Positioned on the lower ground floor, a mirrored room is styled for working up a sweat. Post workout, your own private Dröm designed spa awaits downstairs. Find an entire floor dedicated to a spectacular spa and wellness space, equipped with a sauna, tiled Hammam with heated bench, and a steam room. Just set the scene with the 'Starry Sky' lighting feature and unwind.



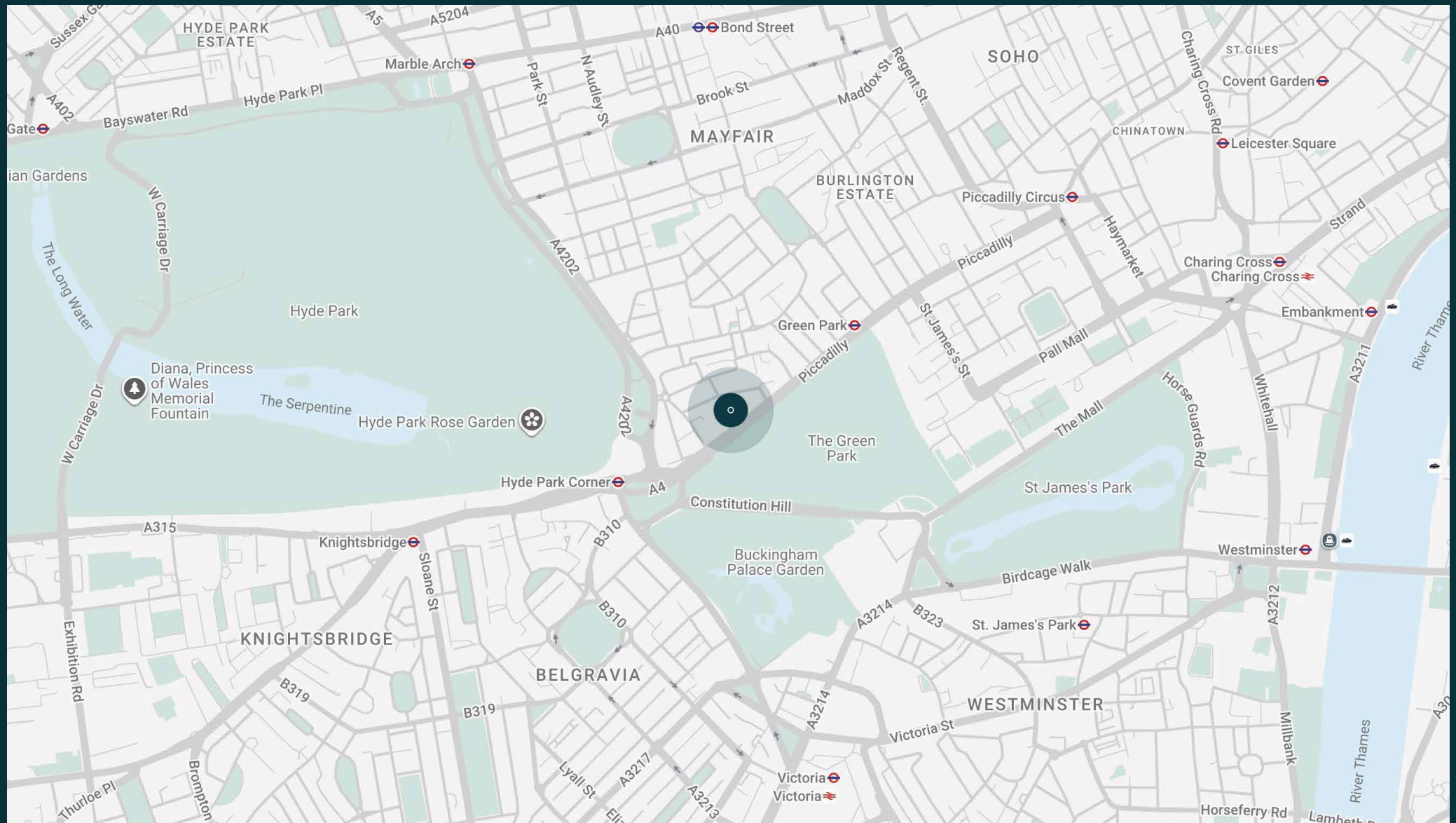


The neighbourhood

A walk away from central London, Down Street Mews places you within easy reach of Mayfair's most coveted restaurants, members clubs and more.

Start your day with a stroll, both Hyde Park and Green Park in walking distance. Head to 18th century square Shepherd Market for a coffee, then browse boutiques with everything from rare books to jewellery. Stop by Nobu for a taste of refined Japanese cuisine, then peruse the latest exhibitions at the Royal Academy of Arts. Come evening, fine dining options are in abundance. Visit Tamarind for an authentic North Indian dining experience or be immersed in eclectic Peruvian fashion at Coya.





Property features

- Open-plan kitchen, dining and reception room
- Additional reception room
- Principal bedroom suite
- Three guest bedroom suites
- Bathroom
- Cinema
- Gym
- Hammam
- Sauna and steam room
- Utility room
- Courtyard
- Air conditioning
- City of Westminster

Approx. 5,909 sq ft / 549 sq m



Approx. Gross Internal Area = 4,722 sq ft / 438.7 sq m
 Basement = 1,187 sq ft / 110.3 sq m
 Total = 5,909 sq ft / 549.0 sq m

Floor plans are for illustrative purposes only and not to scale. Compliant with RICS code of measuring practice.
 Prepared for Domus Stay. Copyright © All Rights Reserved.

Guest & concierge services

Our concierge team are here to help guests settle in, seamlessly. Centre court tickets to Wimbledon, Premier League seats with the best views, Savile Row tailors on standby, or a private chef to cater to individual tastes – we aim to elevate every stay.

From the moment of booking with us, each guest has a single point of contact to finesse the details. Our statement spaces are just the starting point – to ensure everyone feels at home, our rates include:

-
- Weekly housekeeping
 - Flexible check-in/out
 - Luxury linens and Bamford toiletries
 - Legal compliance on all our homes
 - A personal welcome and arrival essentials
 - Unlimited access to guest services and tailored experiences
 - Professional inventory inspection before and after every stay
 - Access to a curated portfolio of sole agency properties





Please get in touch if you have any questions
or require any further information.

hello@domusstay.com

+44 (0)20 8168 8880

The property particulars are a guide not statements. Descriptions, photographs, and plans are for guidance only. The Property is offered "subject to contract and references". No warranties, representations, License or Tenancy is given by Domus Stay. Our full disclaimer together with trading names and our Privacy Policy is shown on our website

© Domus Stay 2025. All rights reserved.

