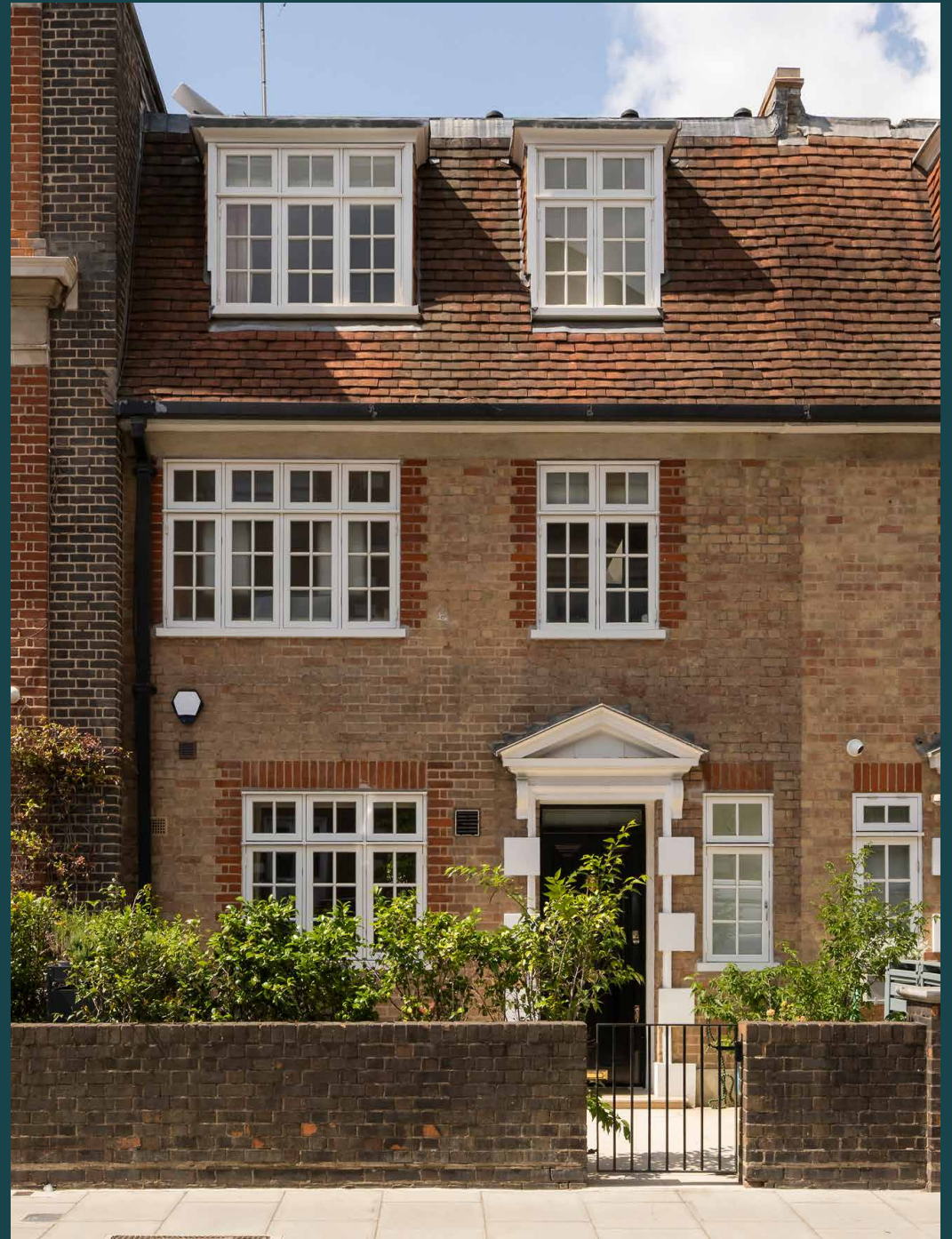




Dovehouse Street

Chelsea SW3

5 Bedrooms, 3 Bathrooms
For 9 guests





An elegant Chelsea house to rent blends period charm with modern luxury across four stylish, light-filled floors.

Tucked away on one of Chelsea's quieter thoroughfares, a red-brick mid-terrace house unfolds over four expansive floors. Set discreetly behind a private front patio, the home offers a rare sense of seclusion – despite its proximity to the bustle of the King's Road. Favourites such as Stanley's and Rabbit are just moments away, perfect for a convivial dinner before retreating to the home's sanctuary beyond its grand front door.

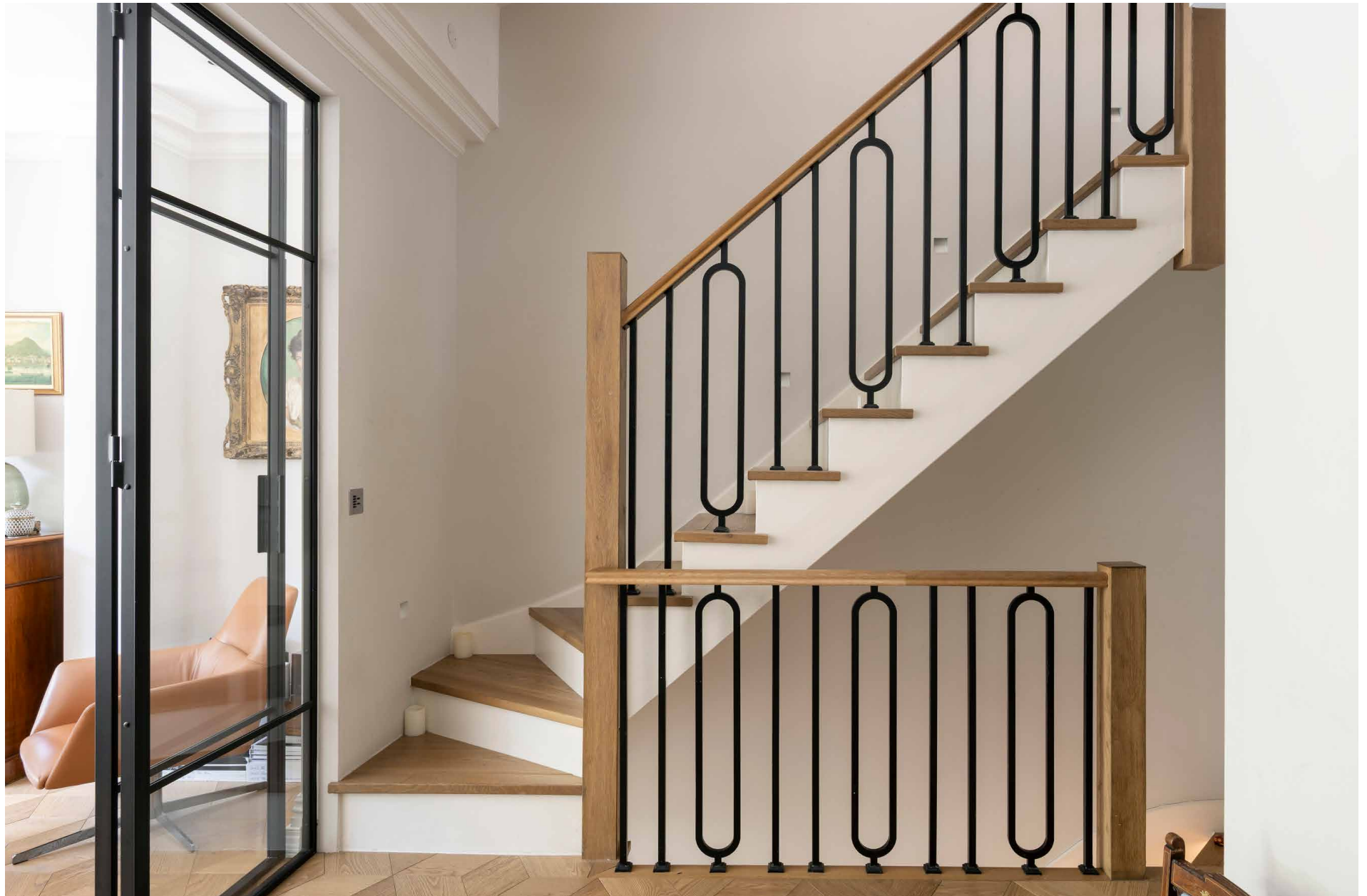
Inside, heritage detail meets modern design. Herringbone floors, laid in an intricate cube pattern, lead through steel-framed glass doors into the formal living room; classical cornicing, an ornate fireplace and antique furnishings set a sophisticated tone here. A Portavini Bar by Soho Home anchors the space for entertaining, framed by contemporary artwork and comfortable seating.

Descending the LED-lit staircase, the heart of the home reveals itself: an open-plan kitchen, living and dining area. Subtly separated by a statement wooden bar with vibrant orange accents, the kitchen is a blend of style and function. Navy cabinetry is offset by gold hardware and pale marble surfaces, while a LaCanche range, industrial extractor and central island complete the culinary scene. In the living area, a skylight in the double-height ceiling casts light over the room, while vast white walls and a tranquil lightwell courtyard enhance the sense of space. At the far end, a dining area for eight sits beside full-height glass doors that open onto the lush vertical garden. A discreet gym, tucked away behind a hidden door, completes the lower-ground floor.













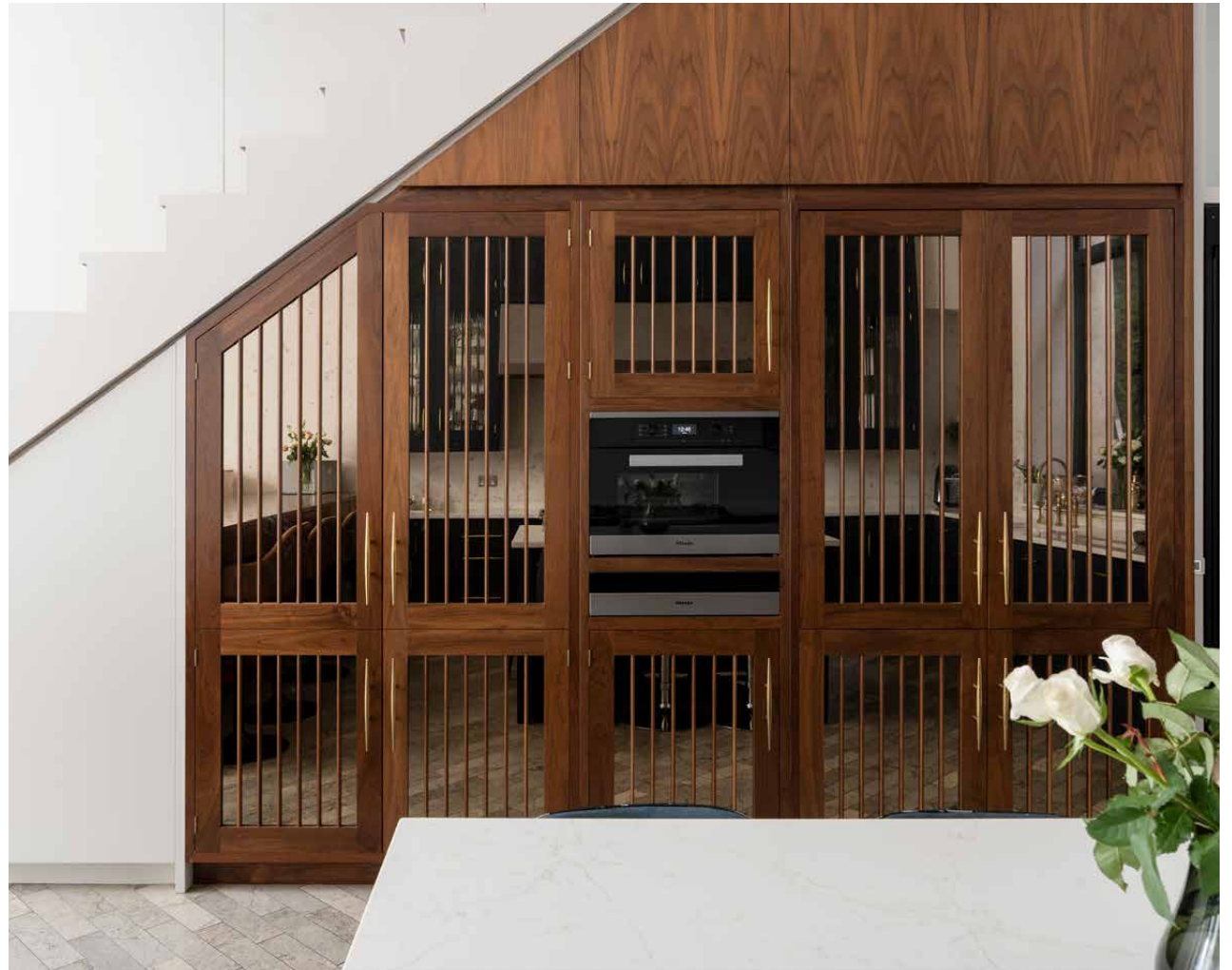






“

Subtly separated by a statement wooden bar with vibrant orange accents, the kitchen is a blend of style and function.

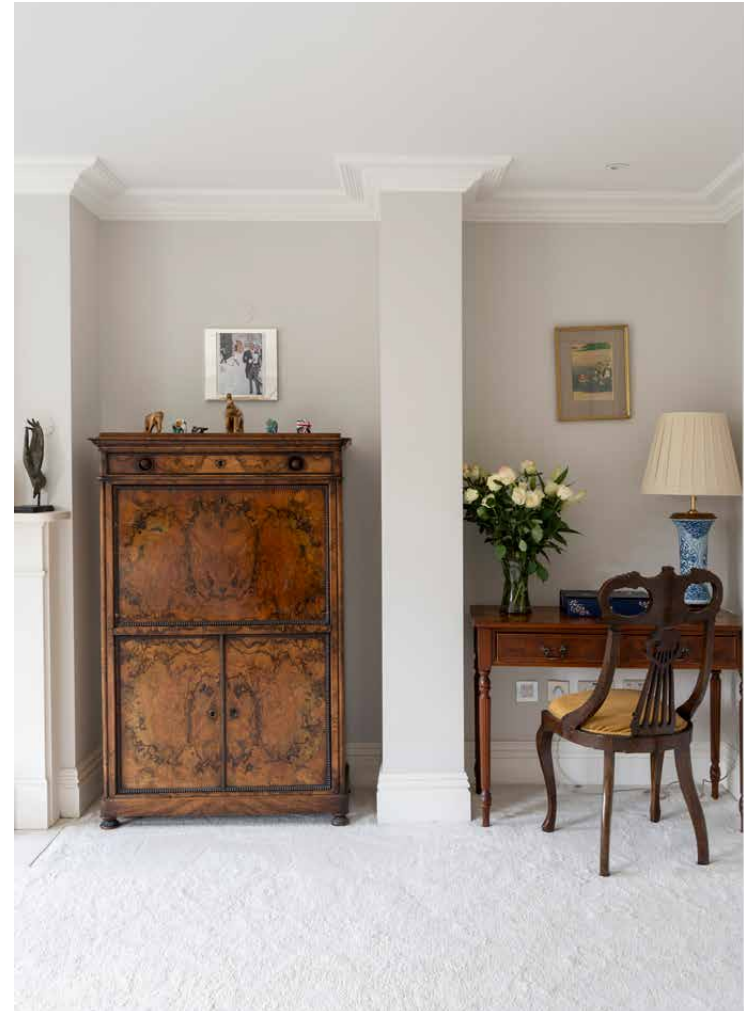






Upstairs, the first floor belongs entirely to the principal suite. Neutral tones and antique touches shape a sanctuary of calm, while a sliding door reveals a walk-through dressing area. The ensuite bathroom features dual marble vanities, an intricately tiled rainfall shower and a freestanding rolltop bath – an indulgent treat after a long day of exploring. The top floor hosts three additional bedrooms and two well-appointed bathrooms, while a fourth guest bedroom is tucked behind a pair of antique hand-carved Chinese doors near the home's entrance.









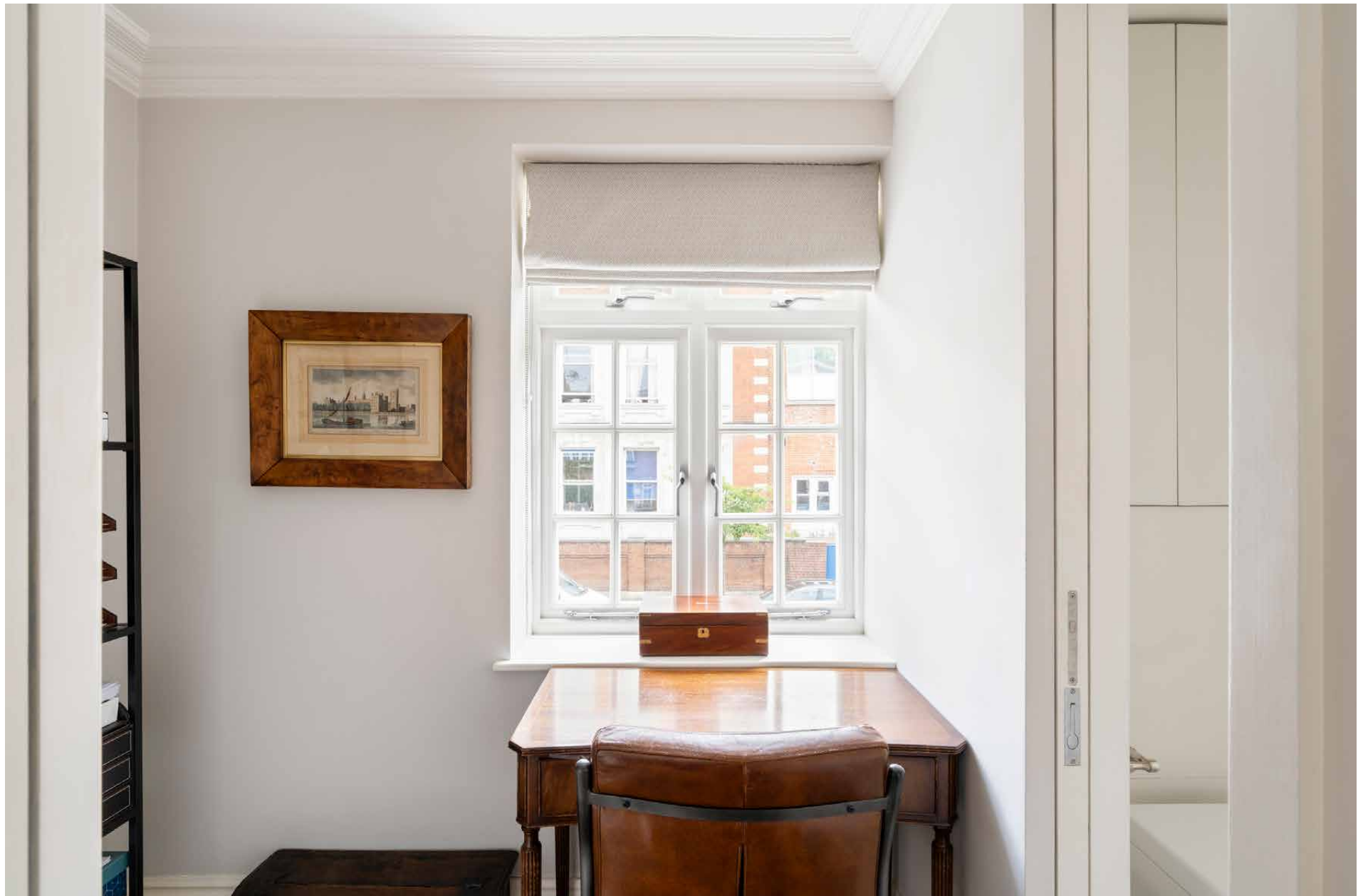














Back downstairs, bifold doors from the reception room open onto a landscaped garden. A lawn and patio make for versatile outdoor living, while an egg-chair and barbecue ensure al fresco hosting comes naturally.



LOCATION

All the delights Chelsea has to offer are on your doorstep at Dovehouse Street.

Begin the day working up a sweat with a vinyasa flow yoga session at Triyoga or caffeinating over brunch at Bluebird. Head to the river for a scenic stroll along its banks then venture to the King's Road for some window-shopping. Enjoy a drink at Chelsea establishment, The Cadogan Arms, before tucking into Greek delicacies at Bottarga and hunkering down for a film at The Everyman. For special occasions, book a table at two-Michelin-starred Claude Bosi at Bibendum.





PROPERTY HIGHLIGHTS

- Open-plan kitchen, dining and living room
- Formal reception room
- Principal bedroom suite with dressing room
- Four guest bedrooms
- Two bathrooms
- Cloakroom
- Gym
- Garden and patio area
- Lightwell courtyard
- Royal Borough of Kensington & Chelsea



Approx. Gross Internal Area = 2,562 sq ft / 238.0 sq m

Garage = 194 sq ft / 18.0 sq m

Total = 2,756 sq ft / 256.0 sq m

Floor plans are for illustrative purposes only and not to scale. Compliant with RICS code of measuring practice.
Prepared for Domus Stay. Copyright © All Rights Reserved.



Please don't hesitate to get in touch if you have any questions or require any further information.

hello@domusstay.com

+44 (0)20 8168 8880

Domus Stay provides the perfect combination of property, place and personal service for the world's most remarkable people. If you have any questions, or if we can help in any way, please contact us on the above number. Be it about a property you have, a property you want, dates to check or any special requirements you may need, we'd love a chat.

