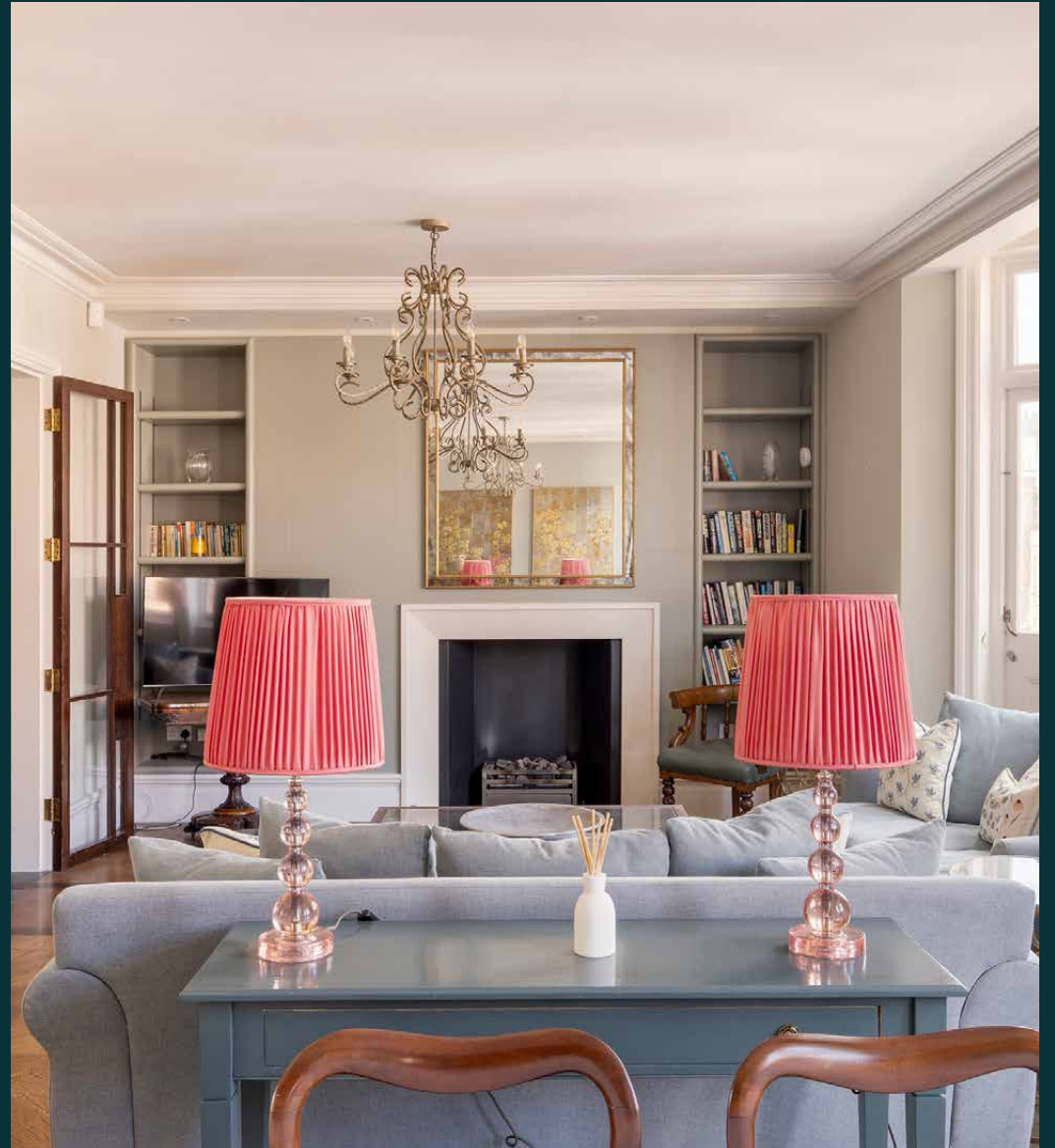


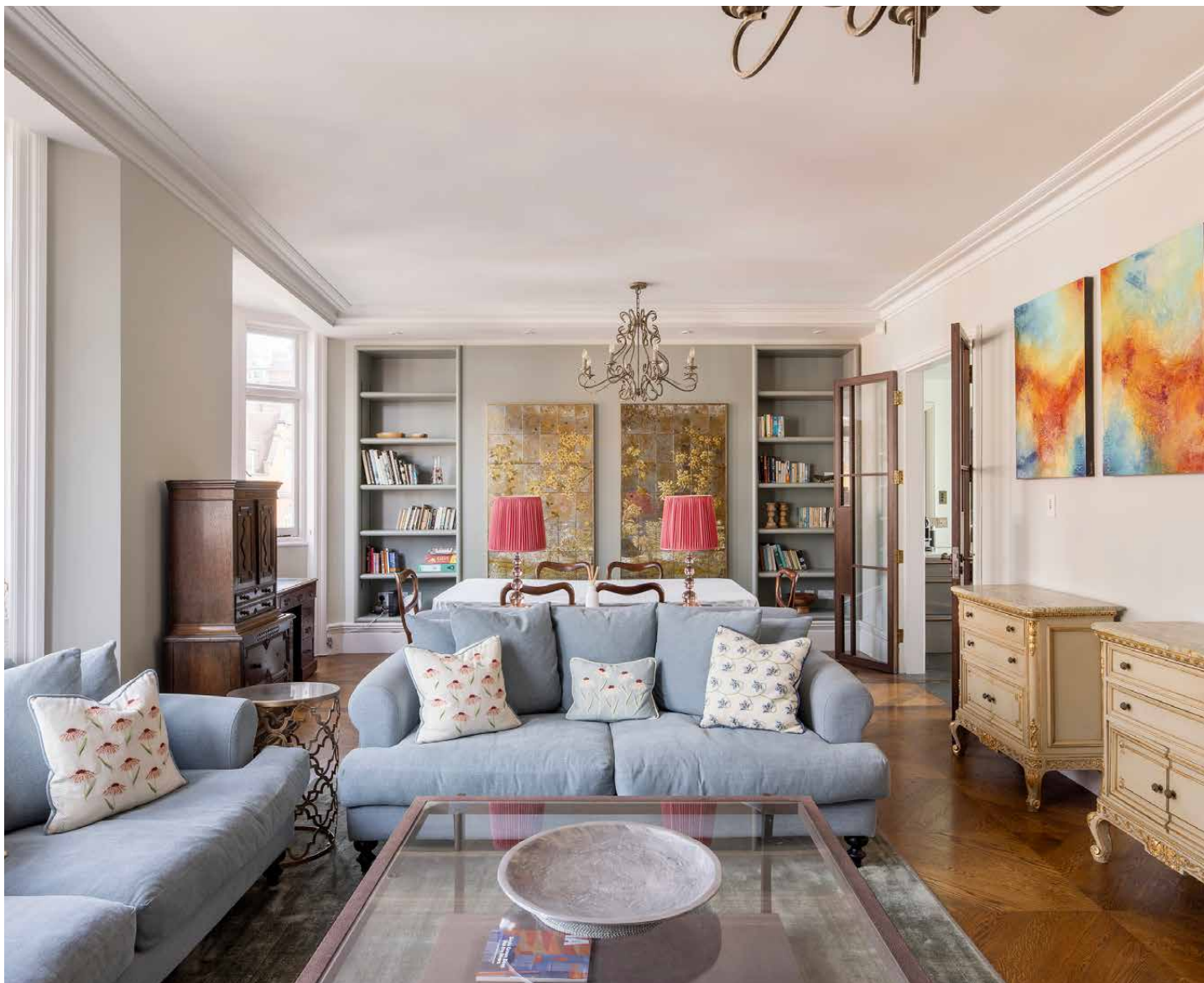
domus
stay.

Culford Gardens

CHELSEA

2 Bedrooms, 2 Bathrooms
For 4 guests





Seconds from Sloane Square and the King's Road, this polished apartment is as elegant as its setting.

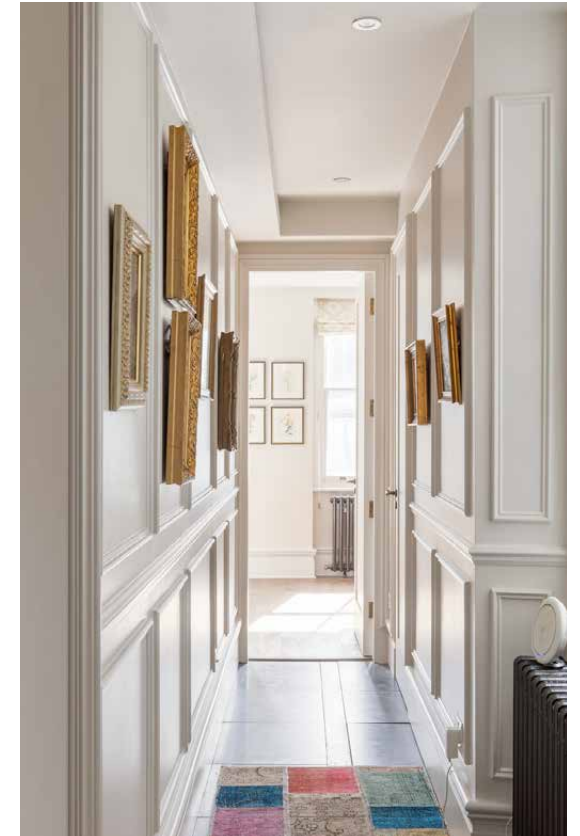
With its rows of red-brick mansion blocks, Culford Gardens has undeniable kerb appeal. Distinguished yet decidedly laid-back, the relaxed feel of this Chelsea street continues inside. Take the lift up to the third floor to an apartment that strikes a balance between classic and contemporary.



Living spaces

The immediate impression here is one of space and abundant natural light. Two generous bay windows brighten the large dining and reception room – an inviting backdrop both day and night. Original parquet floors and antique furniture are lifted by modern grey tones, while abstract artwork adds contemporary flourish. Settle into one of the plush pastel blue sofas to watch TV or whittle away an afternoon with a page-turner from the bookshelf. When you want to watch the world go by, open the door to the cast iron balcony.

The adjoining design-led kitchen looks and acts the part – stainless steel units, mirrored splashbacks and integrated appliances make this an altogether enjoyable space to cook in. A six-seater dining table is set up for hosting or everyday mealtimes.



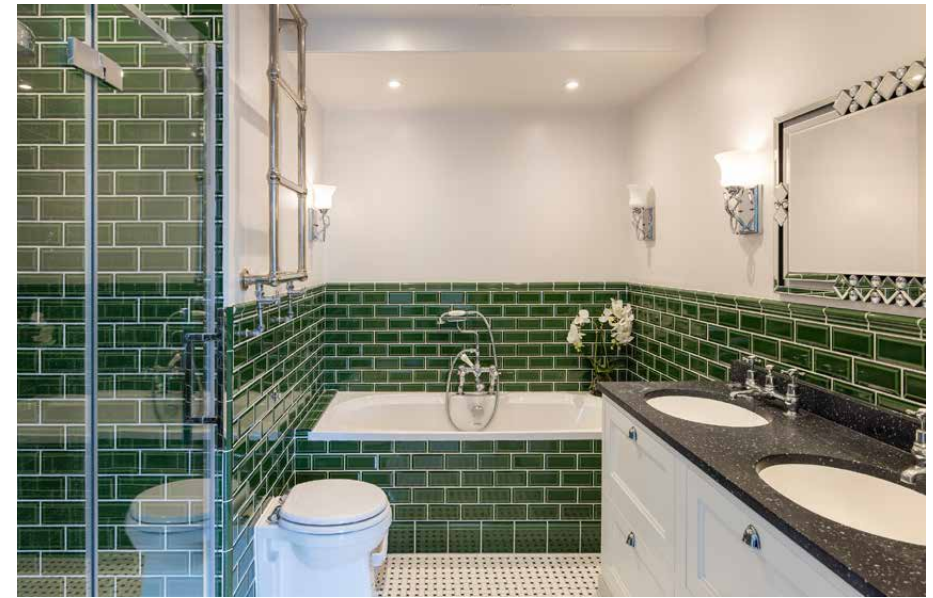
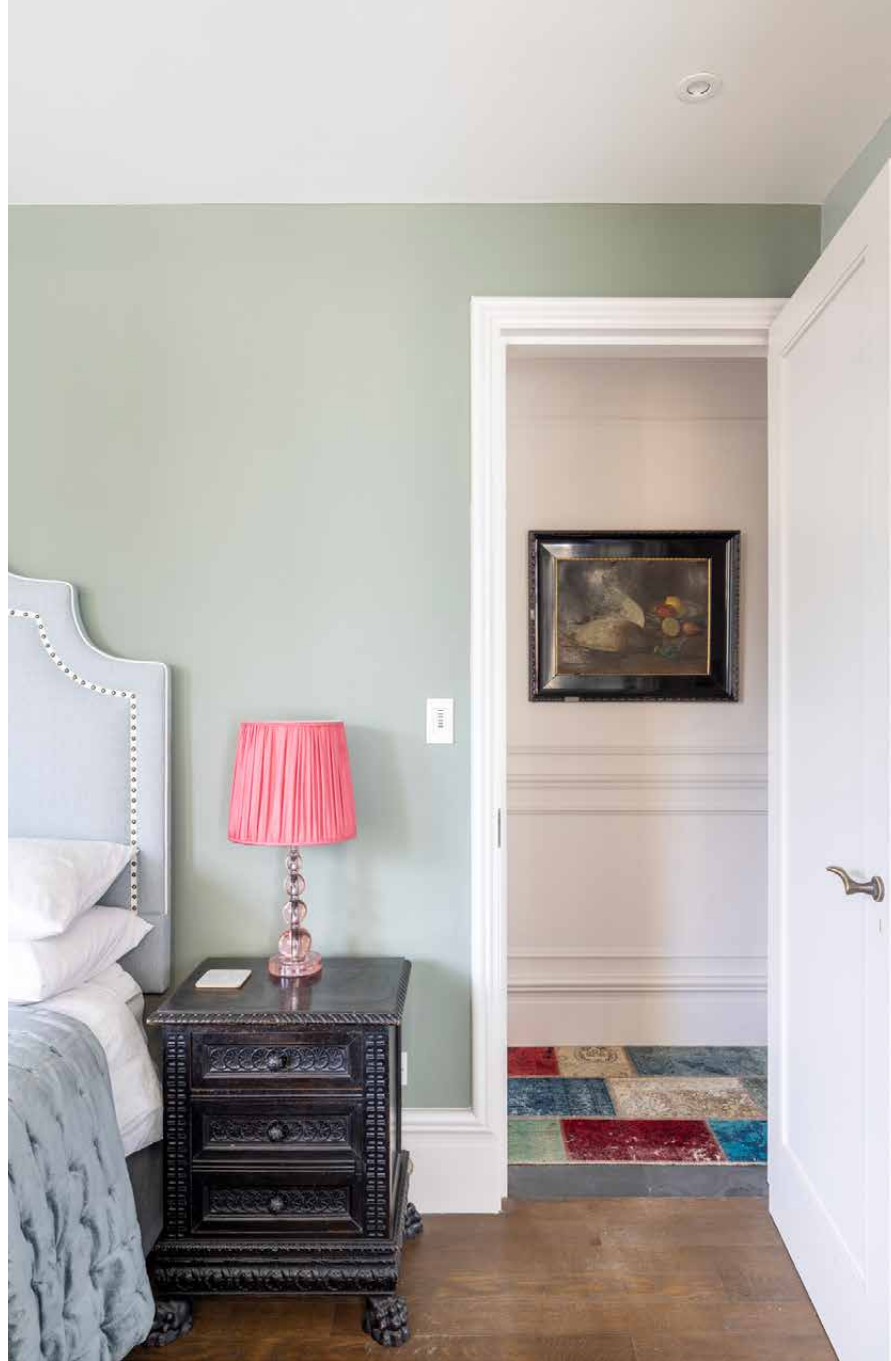




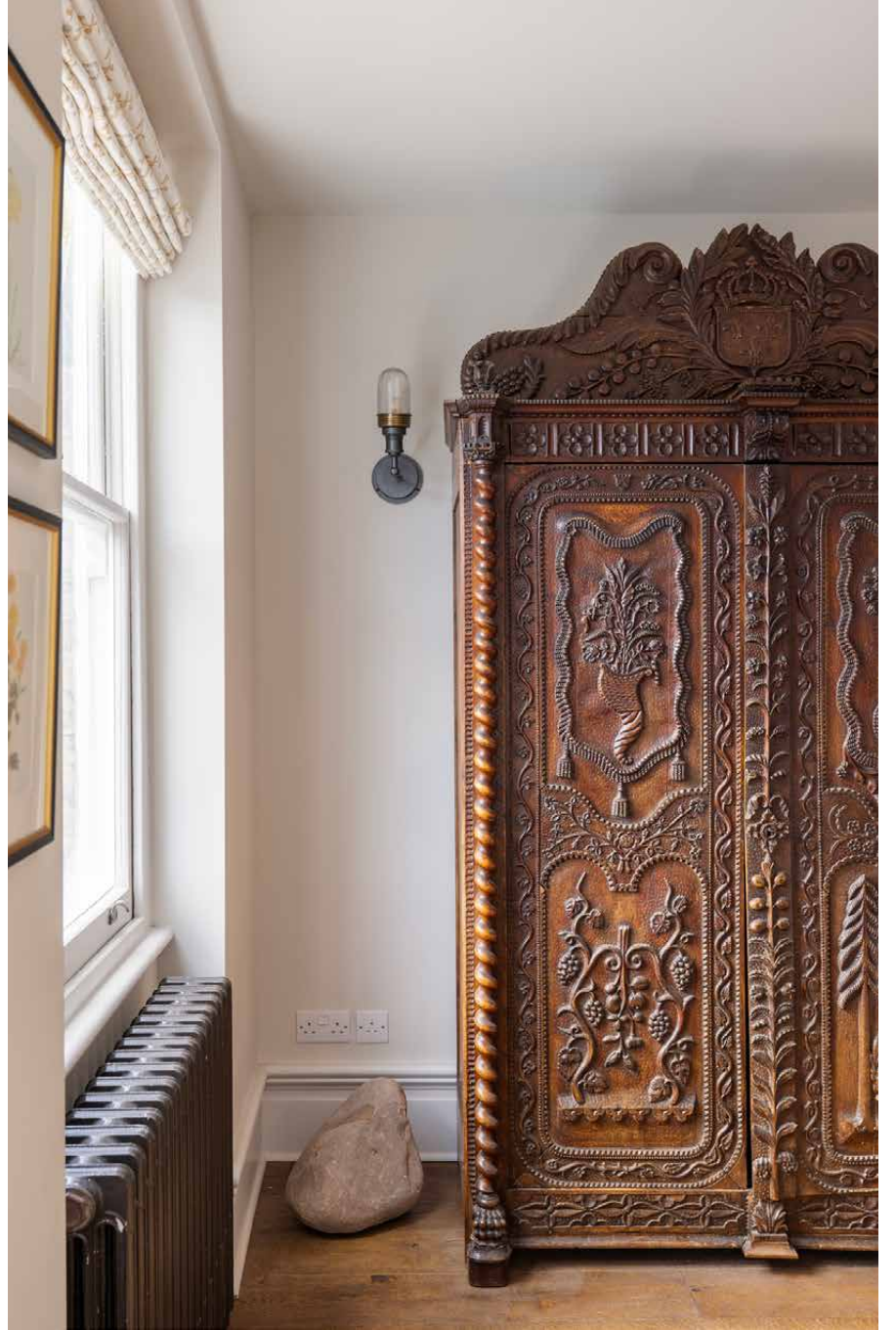
Bedrooms & Bathrooms

Both bedrooms are found tucked away towards the back of the apartment. The principal is plush and peaceful in sage green tones. Everything is conducive to switching off, from the integrated wardrobes to the oversized, upholstered headboard that looks as though it's been lifted straight out of a hotel suite. A further touch of luxury, double doors lead through to the en suite bathroom – all bottle green tiles, dual vanities and a separate bathtub and shower.

The second bedroom is just as considered, and can be set up as a twin. Storage is in ample supply – take your pick from the integrated cupboard space and the intricately carved wardrobe. Things take a more contemporary turn in the bathroom, finished in mosaic tiles in an array of burnished tones.





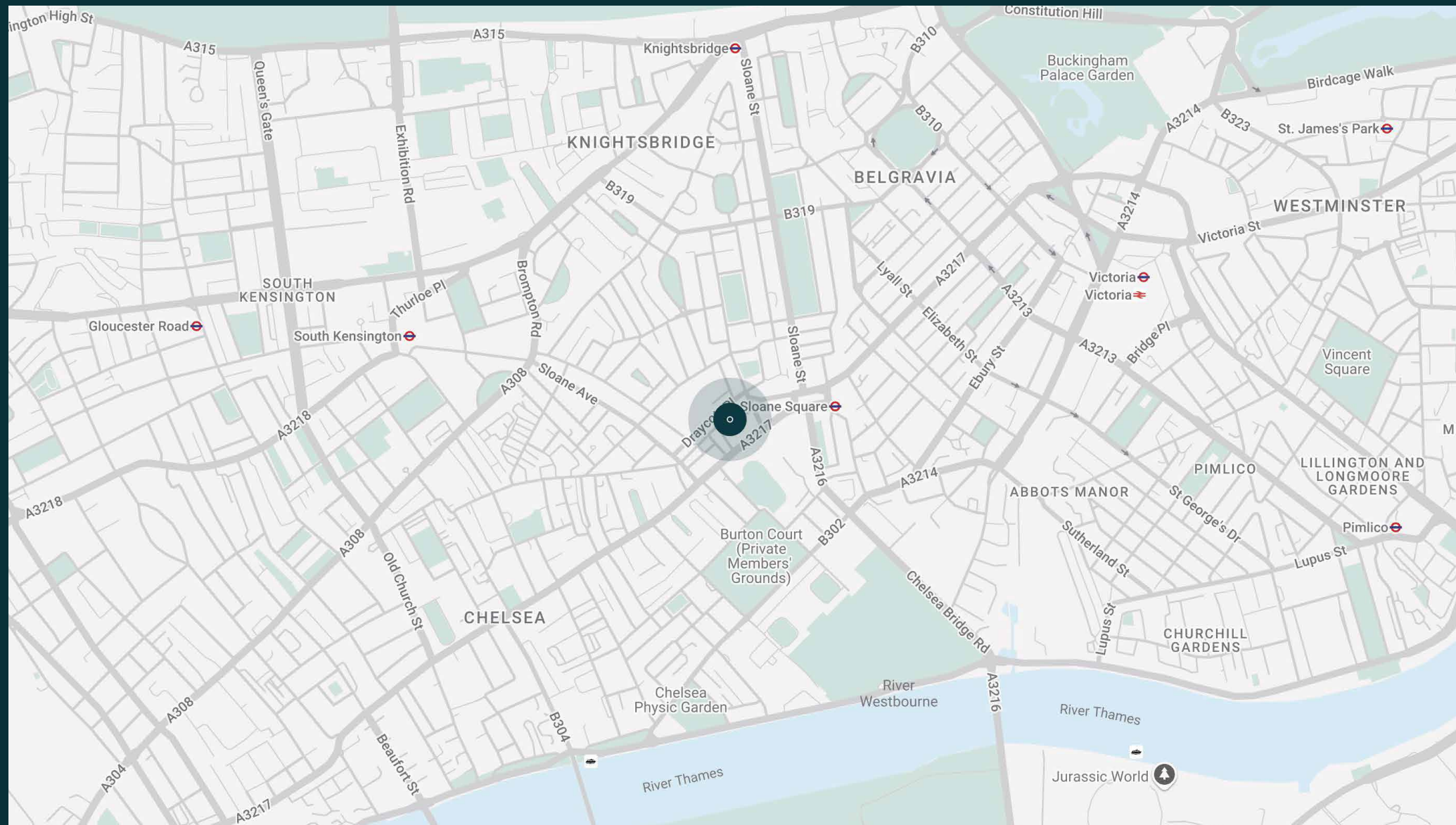


The neighbourhood

Just around the corner from the beating heart of Chelsea, Culford Gardens is in strolling distance of the best of everything.

Eat, drink and shop your way around the neighbourhood. Within one minute's walk, you'll find Michelin-starred restaurant The Five Fields. A few minutes more and you'll be at Sloane Square and famed French bistro The Colbert. Or make a beeline for the nearby boutiques of the King's Road. Duke of York Square and the Saatchi Gallery are also both in easy reach of your front door.

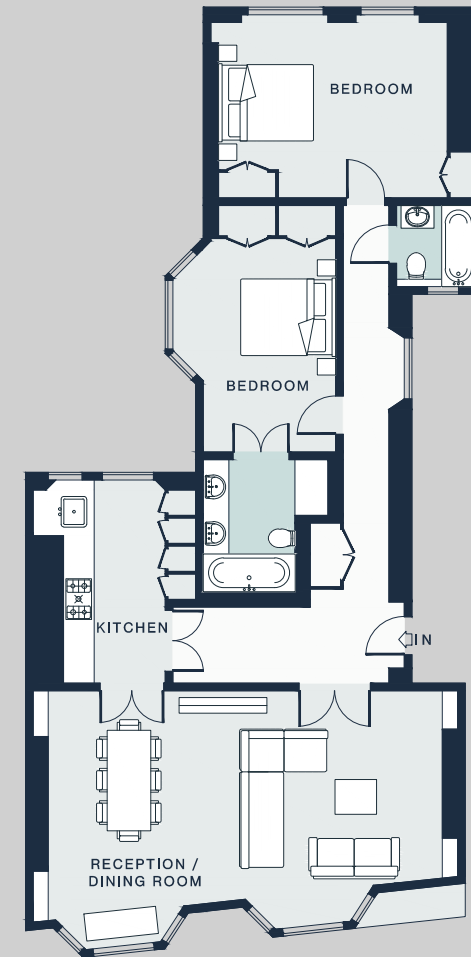




Property features

- Red-brick mansion block apartment
- Double reception and dining room
- Contemporary kitchen
- Principal bedroom suite with storage
- Guest bedroom
- Family bathroom
- Balcony
- Lift access
- Royal Borough of Kensington & Chelsea

Approx. 1,211 sq ft / 112.5 sq m



Approx. Gross Internal Area = 1,211 sq ft / 112.52 sq m

Guest & concierge services

Our concierge team are here to help guests settle in, seamlessly. Centre court tickets to Wimbledon, Premier League seats with the best views, Savile Row tailors on standby, or a private chef to cater to individual tastes – we aim to elevate every stay.

From the moment of booking with us, each guest has a single point of contact to finesse the details. Our statement spaces are just the starting point – to ensure everyone feels at home, our rates include:

-
- Weekly housekeeping
 - Flexible check-in/out
 - Luxury linens and Bamford toiletries
 - Legal compliance on all our homes
 - A personal welcome and arrival essentials
 - Unlimited access to guest services and tailored experiences
 - Professional inventory inspection before and after every stay
 - Access to a curated portfolio of sole agency properties





Please get in touch if you have any questions
or require any further information.

hello@domusstay.com

+44 (0)20 8168 8880

The property particulars are a guide not statements. Descriptions, photographs, and plans are for guidance only. The Property is offered "subject to contract and references". No warranties, representations, License or Tenancy is given by Domus Stay. Our full disclaimer together with trading names and our Privacy Policy is shown on our website

© Domus Stay 2025. All rights reserved.

