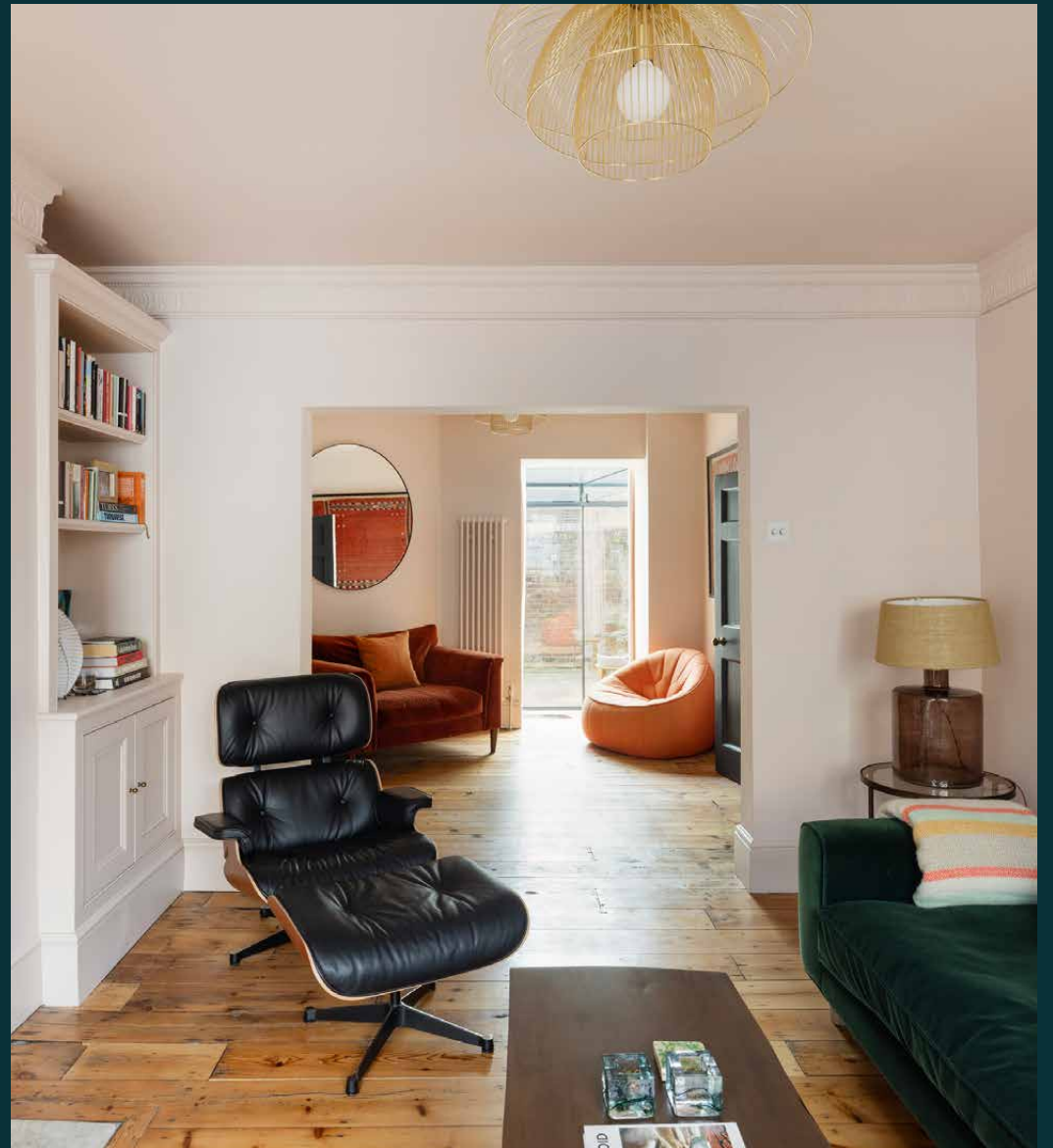


domus
stay.

Cross Street

ISLINGTON

3 Bedrooms, 2 Bathrooms
For 6 guests





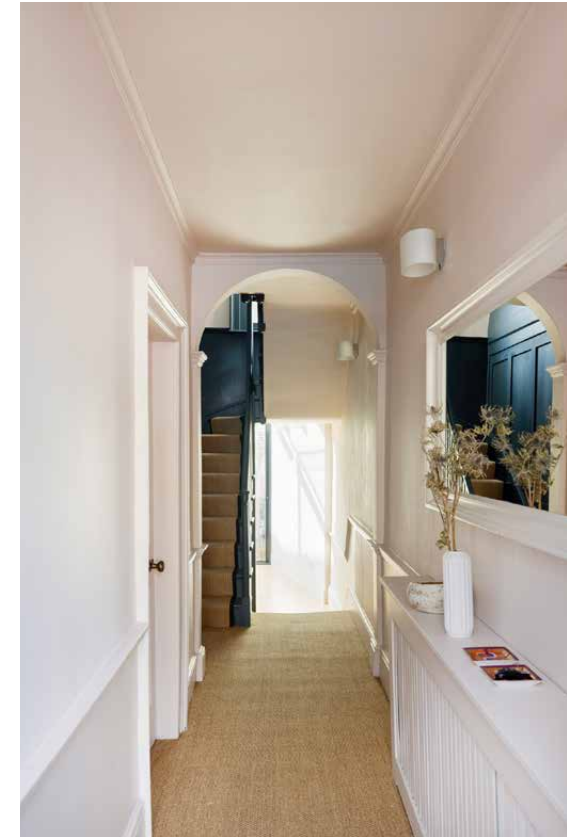
Organic materials and intriguing architectural flourishes infuse a classic Islington home with contemporary elegance.

Offering a tranquil retreat from the vibrant hum of Islington's beloved Upper Street, this three-bedroom home is a study in material creativity and quiet sophistication. Behind its classic stock-brick façade, a dialogue unfolds between heritage and modernity: layers of brick, timber, glass and marble are composed with precision, while sunlight beams through the home from morning to dusk – thanks to an array of windows, skylights and glass panelling. Considered bedrooms, sleek bathrooms and a suntrap patio garden makes for a thoroughly tranquil retreat in the heart of N1.

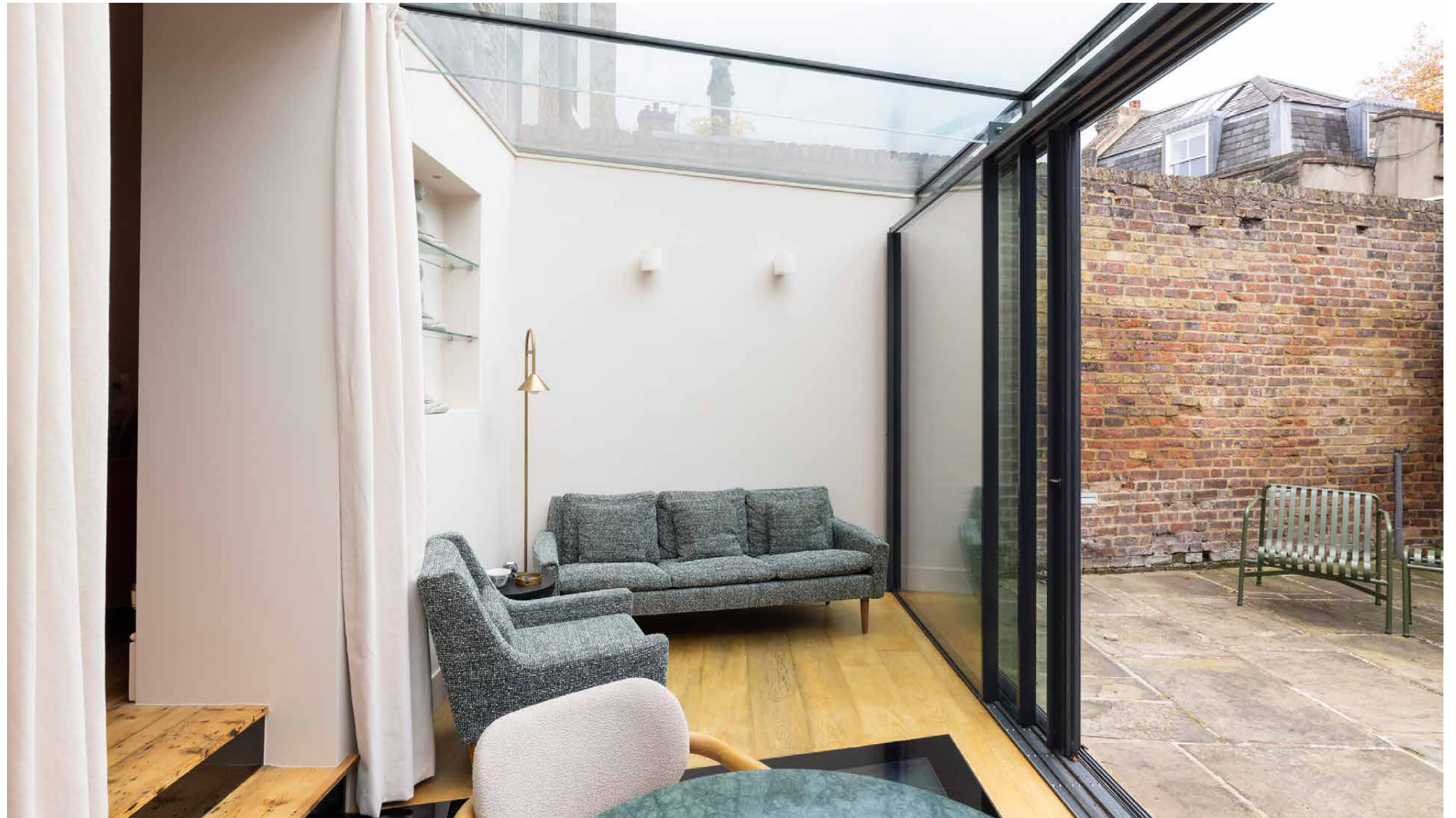


The living spaces

Beyond double door, a sophisticated setting for entertaining awaits in the open-plan living space. A pared-back palette directs attention to the room's pièce de résistance – the striking view framed by floor-to-ceiling glass windows. Softly lit by natural light, a cream sofa calls for kicking back, while a glass chandelier brings a warm ambiance to a marble-topped dining table. Concealed behind a discreet door, slated-toned tiles distinguish a contemporary kitchen – all integrated appliances, clean lines and calm composure.



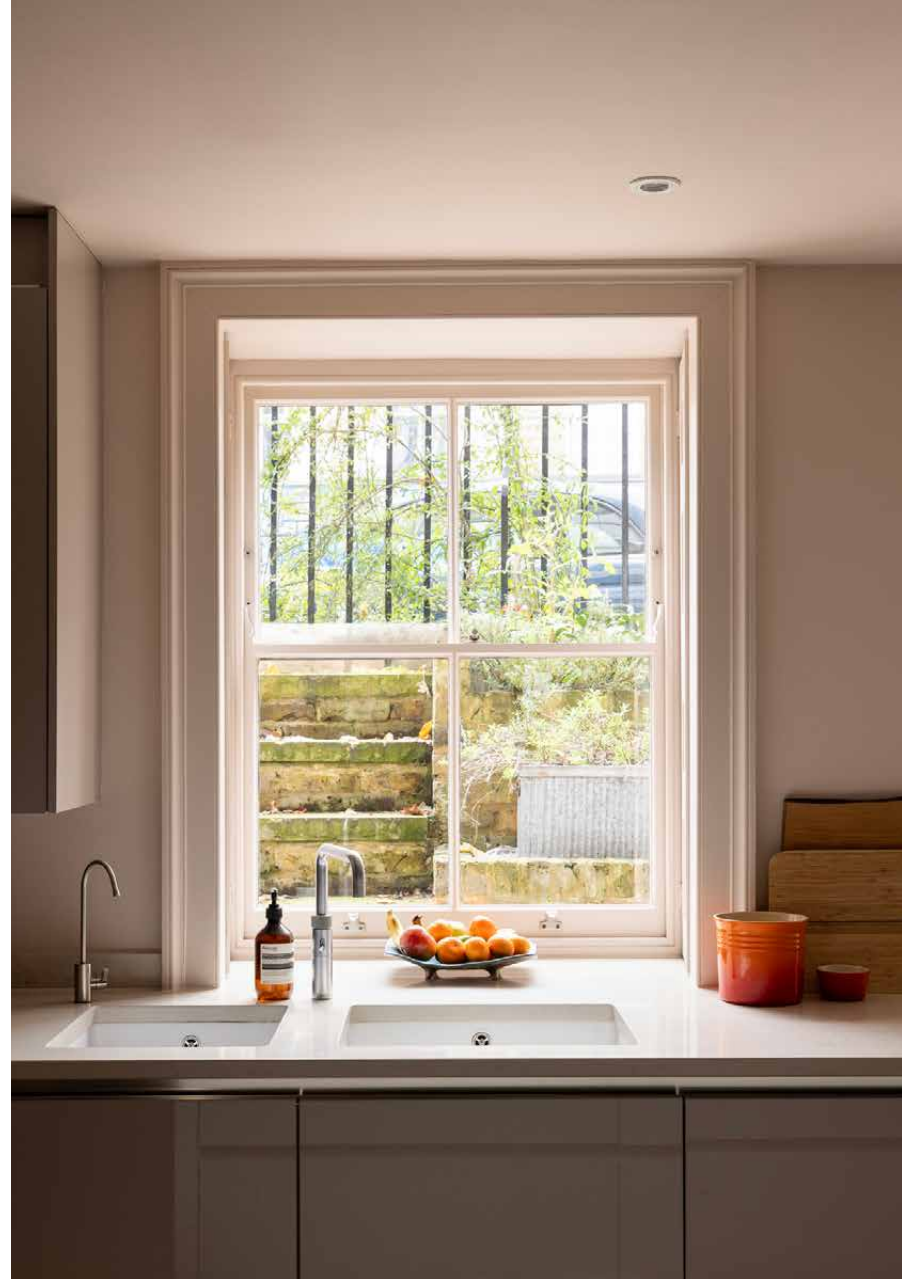






Kitchen & dining

On the lower-ground floor, the open-plan kitchen and dining room is a setting tailored for entertaining. Finished with pale tones, mirrored panels and bathed in light through a series of windows, the space has a calming quality – enhanced by all the natural materials, from the exposed red brickwork to the pale wood floors. The central island doubles as a breakfast bar, while a contemporary table is paired with Eames chairs for a stylish dining area.

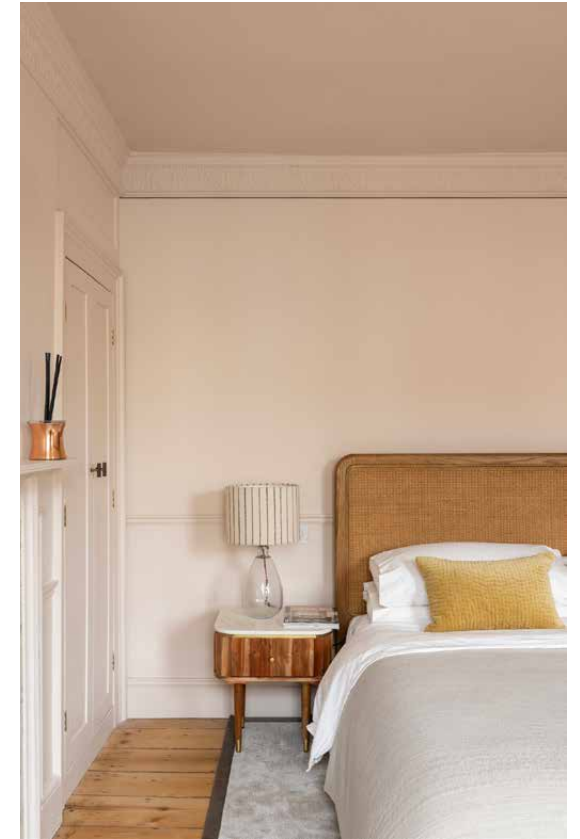




Bedroom & bathrooms

The principal bedroom is an elegant sanctum of calm. Neutral walls, pale wood floors and rows of finely-crafted wardrobes set a minimalist tone. Considered furnishings include fern-green velvet chairs, a marble fireplace surround and the Nkuku Kagitha recycled glass chandelier – all beautifully illuminated through the large sash windows. Next door, the principal bathroom exudes style and serenity. A Victoria + Albert Elwick freestanding bathtub catches the eye, backdropped by pebble-toned metro tiling and a dual vanity.

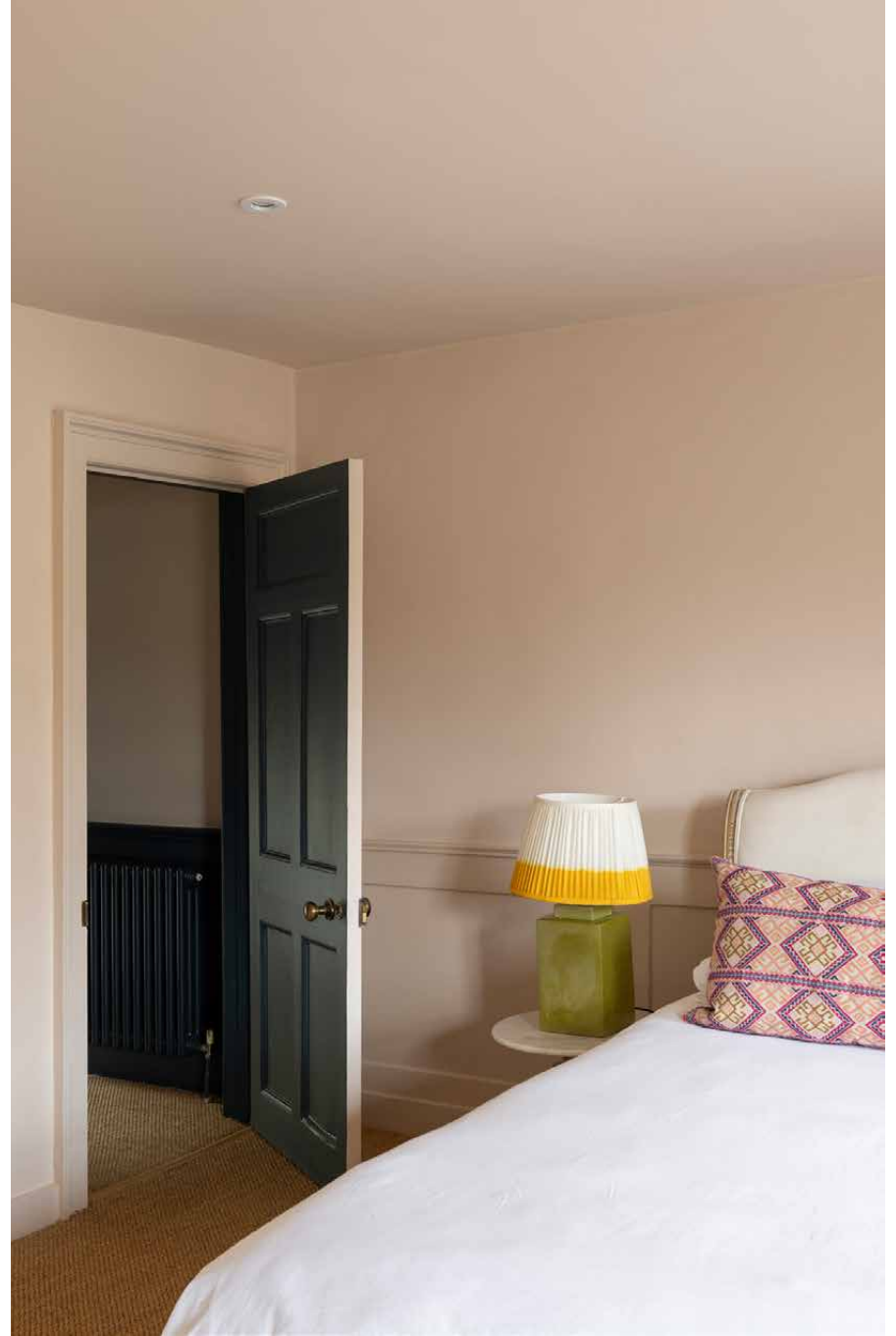
On the top floor, two guest bedrooms enjoy Sisal carpets and pale walls. In one of the rooms, pops of colour are introduced with patterned cushions, green lamps and a yellow ottoman. In the other room, a pared-back palette lets the Anthony Burrill print do the talking. Both of these bedrooms share an en suite bathroom, which has gently curved walls that add a sense of movement to the spaces. Inside, bluescale micro tiling wraps around a rainfall shower.











Outdoor space

Stone paving and exposed brick walls make for a textural garden setting, complemented by leafy trees and sage-green garden chairs. On sunny days, pick up local delicatessen items and head to the patio for private picnics and golden-hour aperitivo.

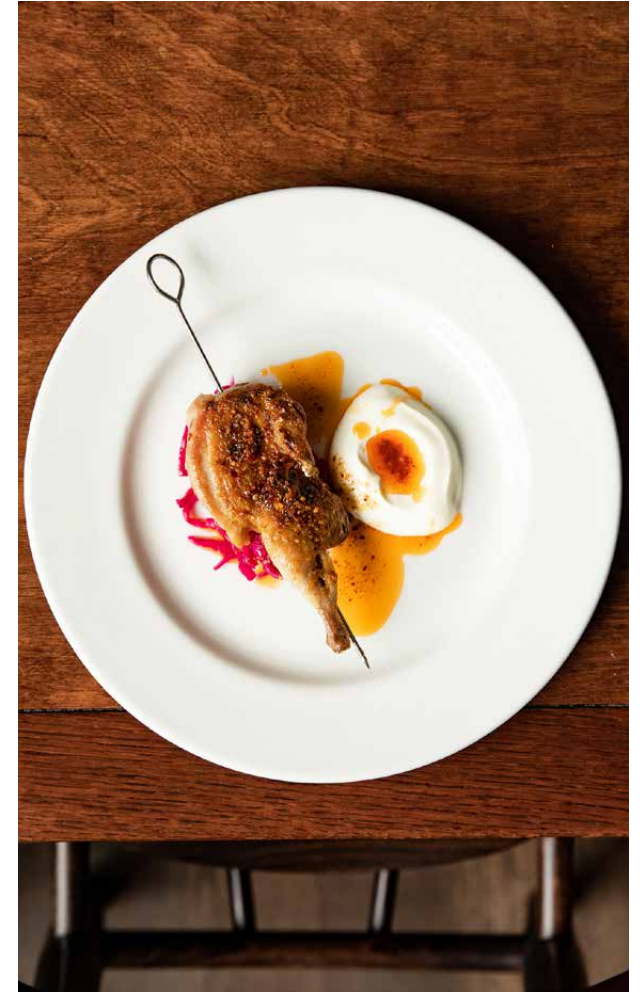


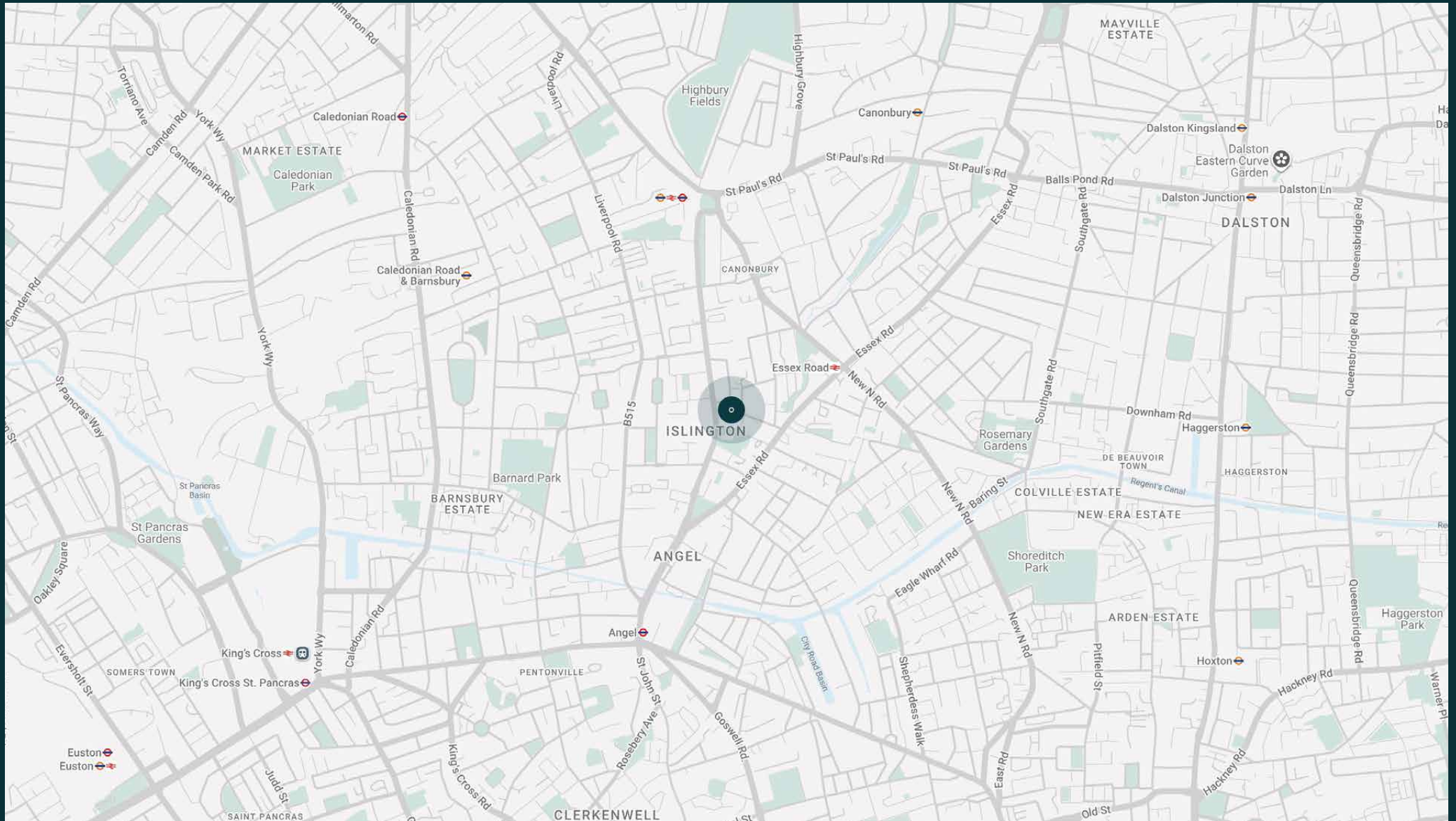


The neighbourhood

Cross Street is a quiet, tree-lined road linking the lively hubs of Upper Street and Essex Road – offering a calm retreat just moments from Islington's buzz. The street is home to a handful of independent shops and luxury favourites, from Angel Italian Delicatessen to Le Labo and Aesop. Head to Ottolenghi's first ever restaurant along Upper Street, before venturing down to Islington Green – the neighbourhood's leafy heart. Foodies will appreciate the seafood at Prawn on the Lawn, Austrian comfort food at Kipferl, Katsute 100's fresh Japanese teas and Islington's best Sunday roast at The Pig and Butcher.

For nights of culture, head to the iconic neon-lit Screen on the Green, or The Almedia and King's Head Theatres – both showcasing a range of drama and comedy. Music lovers will appreciate Islington Assembly Hall and Union Chapel for alternative bands and concerts, while art aficionados can check out one of London's hidden museum gems: the Estorick Collection of Modern Italian Art. Stretch your legs around Highbury Fields, offering 30 acres of green space that's ideal for dog walkers, runners and summertime picnic-goers. Venture north and you'll reach Emirates Stadium, home of Arsenal Football Club and a calendar of games to catch.





Property features

- Open-plan kitchen and dining room
- Double reception room
- Principal bedroom
- Principal bathroom
- Conservatory lounge
- Two guest bedroom with shared en suite
- Utility room
- Private patio garden
- Borough of Islington

Approx. 1,819 sq ft / 169 sq m



Guest & concierge services

Our concierge team are here to help guests settle in, seamlessly. Centre court tickets to Wimbledon, Premier League seats with the best views, Savile Row tailors on standby, or a private chef to cater to individual tastes – we aim to elevate every stay.

From the moment of booking with us, each guest has a single point of contact to finesse the details. Our statement spaces are just the starting point – to ensure everyone feels at home, our rates include:

- Weekly housekeeping
- Flexible check-in/out
- Luxury linens and Bamford toiletries
- Legal compliance on all our homes
- A personal welcome and arrival essentials
- Unlimited access to guest services and tailored experiences
- Professional inventory inspection before and after every stay
- Access to a curated portfolio of sole agency properties



domus stay.

Please get in touch if you have any questions
or require any further information.

hello@domusstay.com

+44 (0)20 8168 8880

The property particulars are a guide not statements. Descriptions, photographs, and plans are for guidance only. The Property is offered "subject to contract and references". No warranties, representations, License or Tenancy is given by Domus Stay. Our full disclaimer together with trading names and our Privacy Policy is shown on our website

© Domus Stay 2025. All rights reserved.

