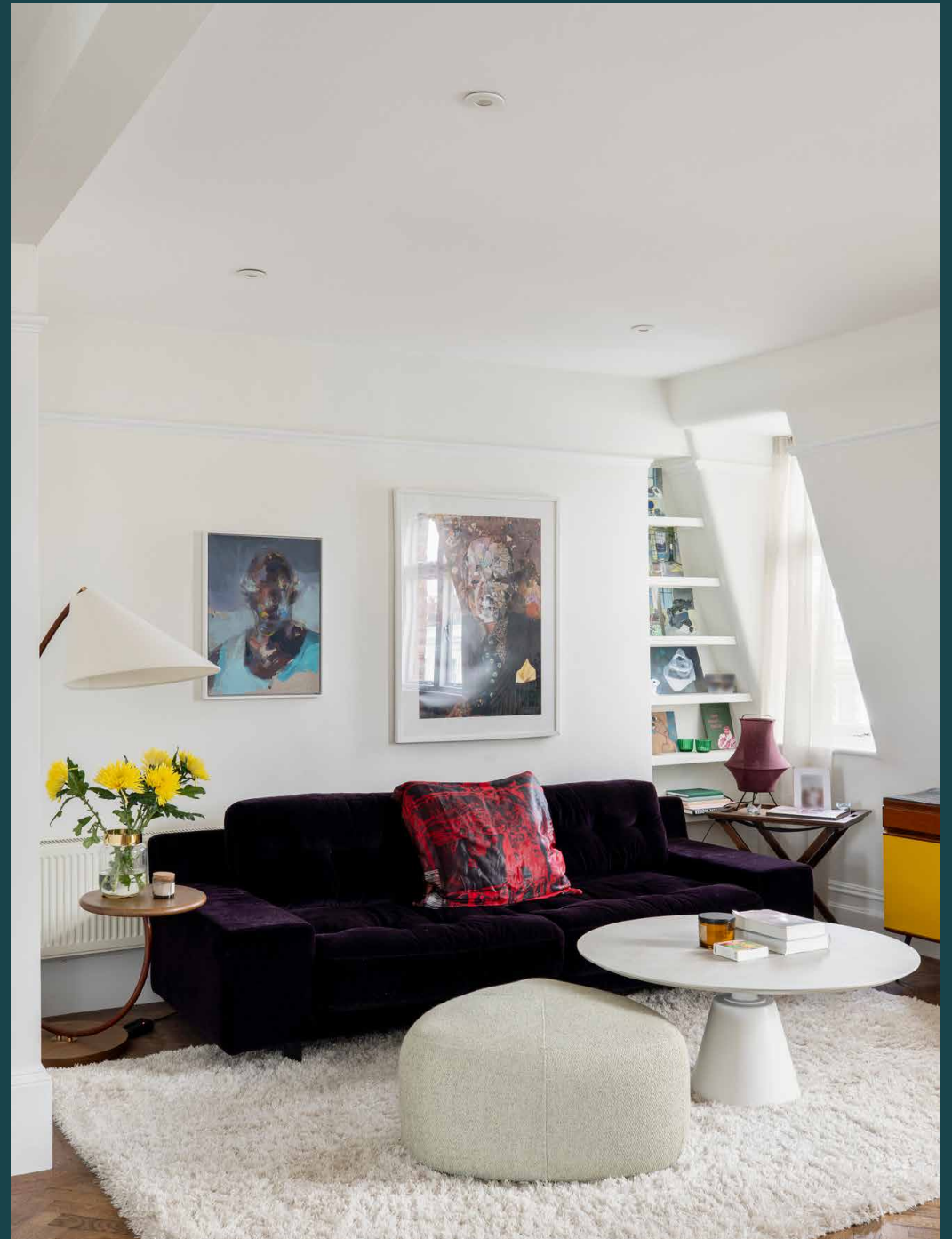


Crescent Mansions

Notting Hill W11

3 Bedrooms, 2 Bathrooms
For 5 guests





Tranquil city living transpires at this three-bedroom apartment on one of Notting Hill's most picturesque streets.

Occupying the third floor of a handsome red-brick mansion block, Crescent Mansions offers a calming counter to the eclectic air of Notting Hill.

Dark herringbone floors sweep through the open-plan reception and dining room, where a pristine white canvas comes adorned in deep jewel tones. An east-facing window casts a warm glow across the dining area, a calming spot to savour slow mornings and sun-lit breakfasts. Come evening, switch on the spotlights for a more intimate ambiance.

Tailor-made for relaxation, soothing textures draw you over to the lounge. Sink back into the plush velvet sofa, taking a moment to admire the abstract art overhead. From here, step through an opening to the eat-in kitchen, a contemporary feel fashioned from clean lines and stainless-steel finishes. A tall glass door dials up the brightness, leading to a balcony with leafy rooftop views across Notting Hill.



A balcony accessed from the kitchen offers a serene spot for intimate dining with picturesque views across Notting Hill.



“

A tall glass door dials up the brightness, leading to a balcony with leafy rooftop views across Notting Hill.





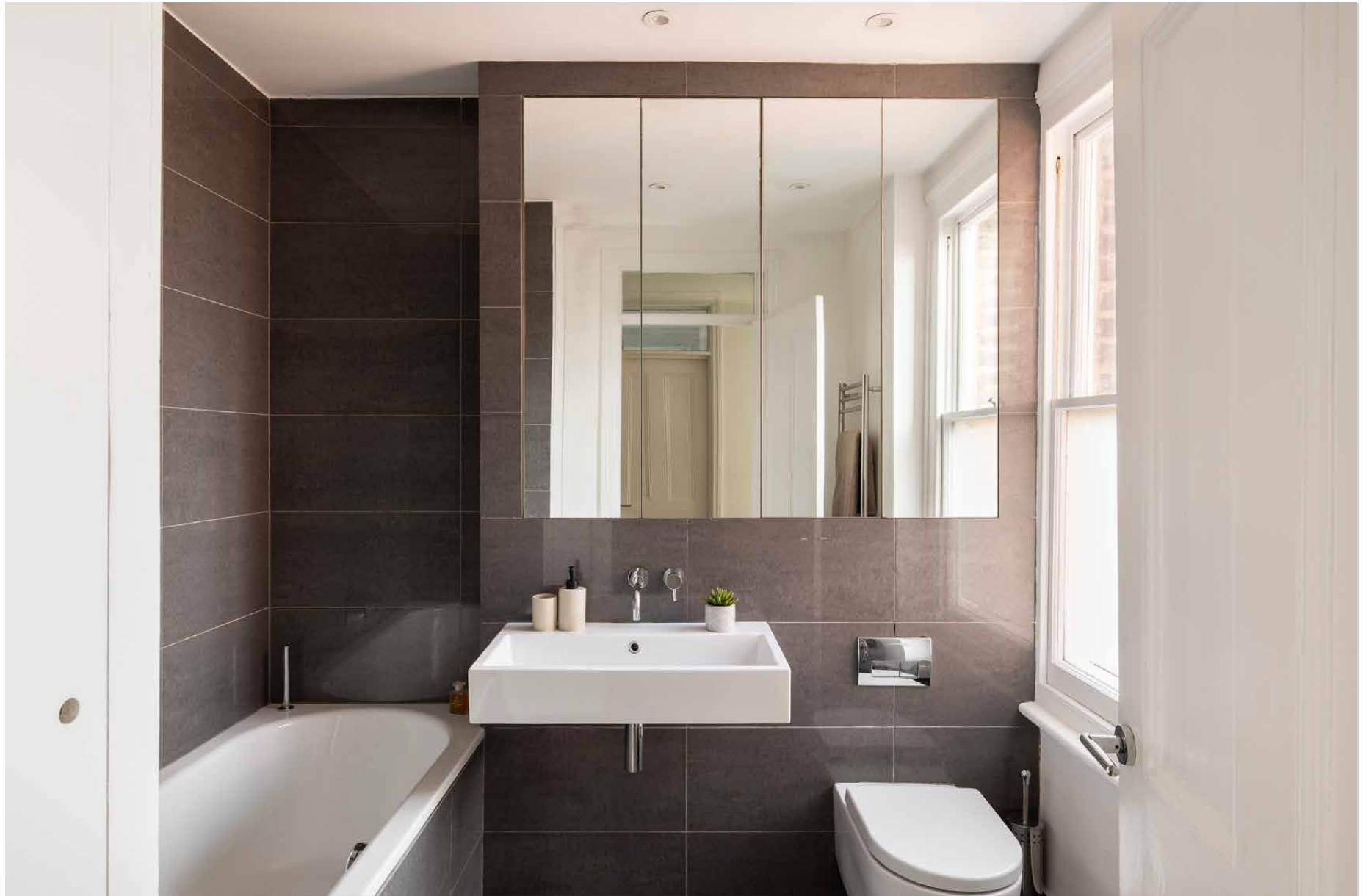


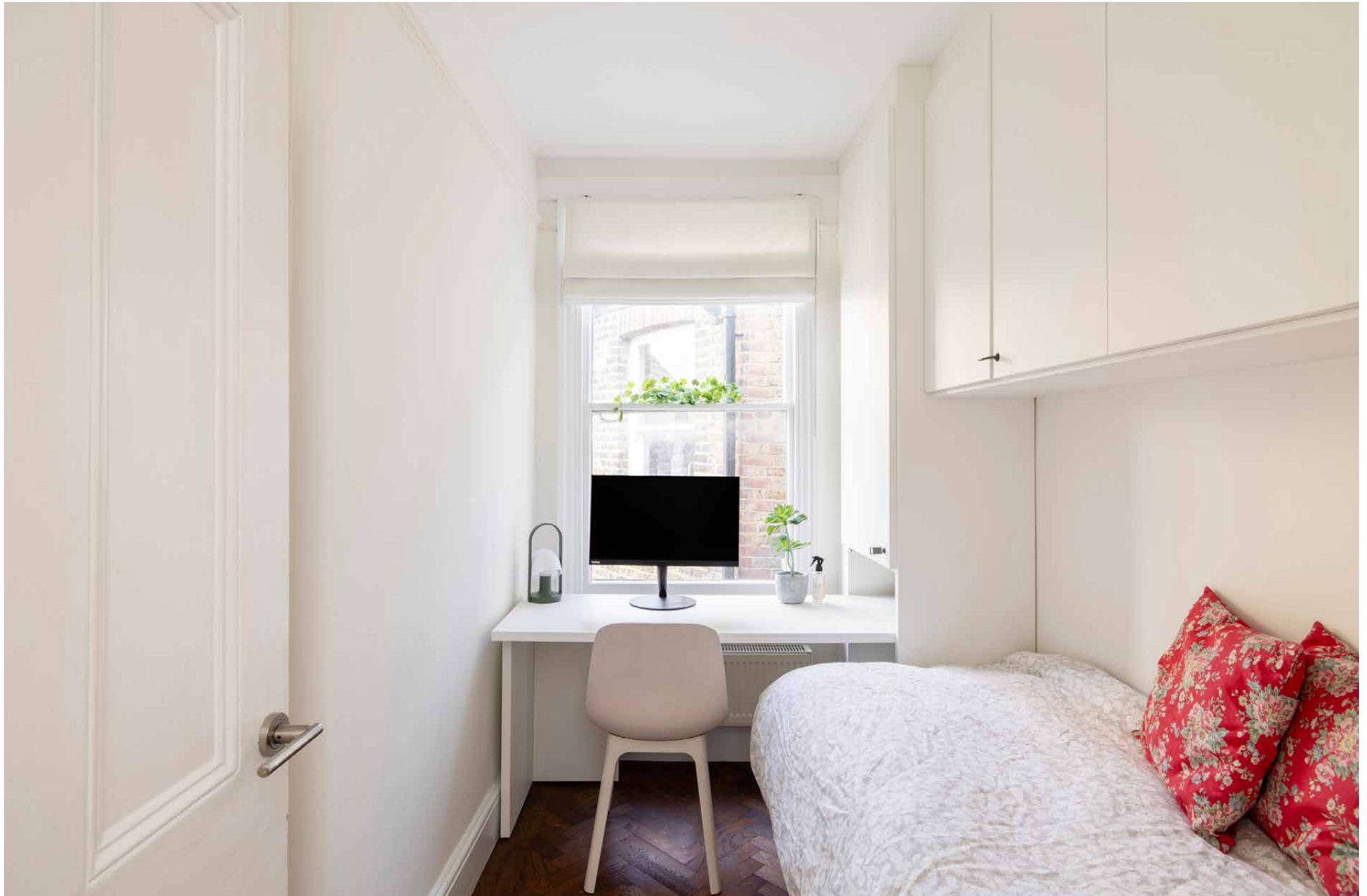
A calming aura unravels in the principal bedroom suite, where floor-to-ceiling wardrobes offer endless storage for treasures from the boutiques of Westbourne Grove or Portobello Market. Past a glass panel, an indulgent en suite bathroom hosts a spacious shower. Two further bedrooms come dressed in a pared-back palette, the smaller of which offers versatility as a study with a sleek white desk. Serving these bedrooms is a large family bathroom with a generous bathtub.















LOCATION

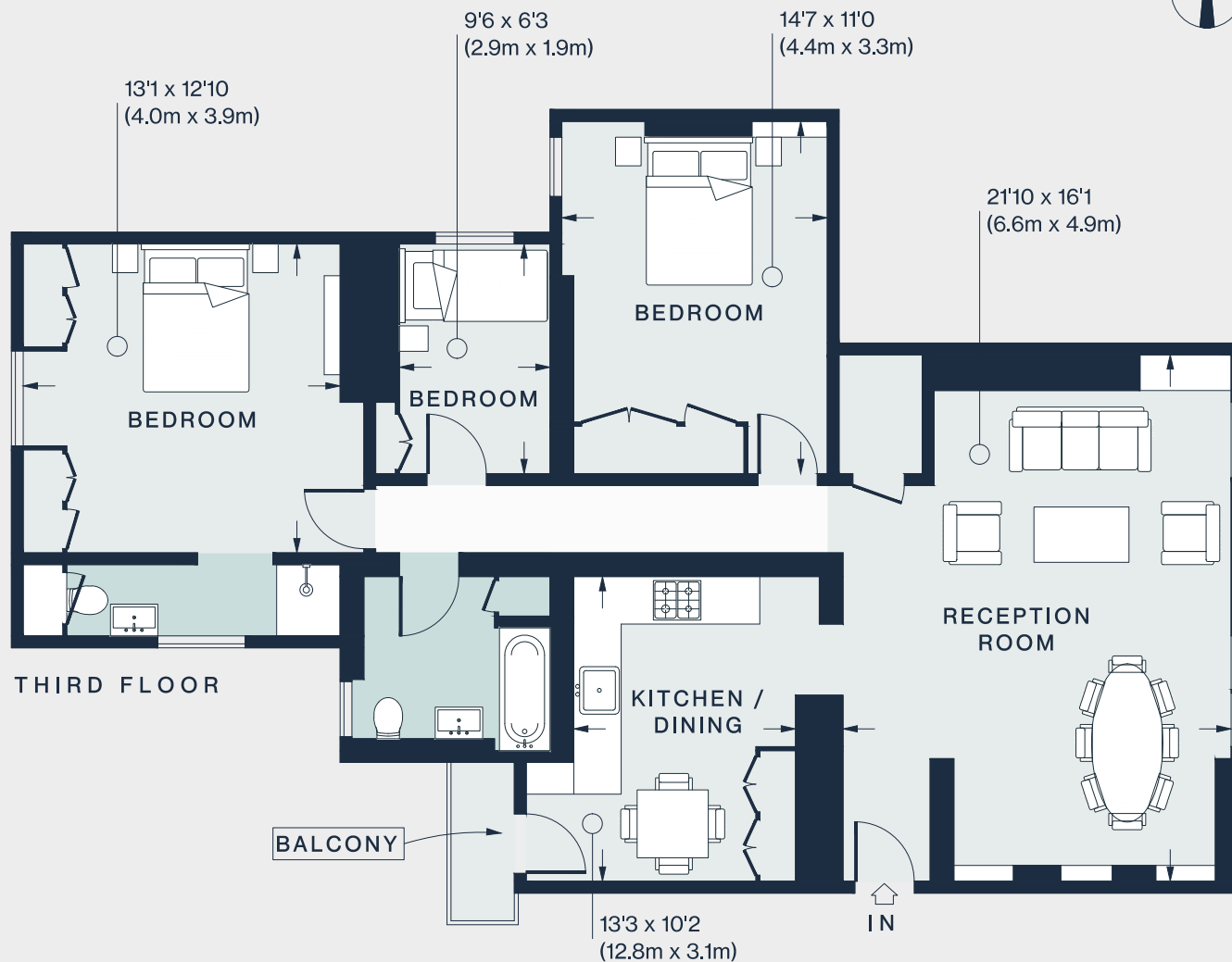
Just moments from the beating heart of Notting Hill, Crescent Mansions enjoys an unexpected sense of calm.

Spend leisurely mornings exploring the markets, then stop for brunch at Farm Girl. Browse the boutiques of Westbourne Grove, picking up fresh provisions from Daylesford Organic en route home. For peaceful afternoons in nature, the leafy lawns of Holland Park are just a short walk away. Come evening, an array of fine dining options are only minutes away. Head to Core by Clare Smyth for three-Michelin-starred dining, or visit Argentinian inspired Casa Cruz, just seconds from your door.



PROPERTY HIGHLIGHTS

- Open-plan reception and dining room
- Eat-in kitchen
- Principal bedroom suite
- Two guest bedrooms
- Family bathroom
- Balcony
- Communal garden access
- Royal Borough of Kensington & Chelsea



Approx. Gross Internal Area = 1,160 sq ft / 107.8 sq m

Floor plans are for illustrative purposes only and not to scale. Compliant with RICS code of measuring practice.
Prepared for Domus Stay. Copyright © All Rights Reserved.



Please don't hesitate to get in touch
if you have any questions or require
any further information.

hello@domusstay.com

+44 (0)20 8168 8880

Domus Stay provides the perfect combination of property, place and personal service for the world's most remarkable people. If you have any questions, or if we can help in any way, please contact us on the above number. Be it about a property you have, a property you want, dates to check or any special requirements you may need, we'd love a chat.

