

domus  
stay.

---

# Cheyne Walk

CHELSEA

4 Bedrooms, 5 Bathrooms  
For 8 guests

---





## An elegant Chelsea townhouse to rent with period charm and modern comforts moments from the riverside buzz.

Tucked behind manicured hedges a stone's throw from the dynamic Chelsea riverside, this four-bedroom townhouse offers a rare balance of serenity and city living. Beyond the wrought-iron gate and up a flight of stone steps, the front door opens into a five-floor home defined by grand proportions and timeless character. Period features and an expansive footprint bring both calm and charm to everyday living here, right at the heart of an enclave that was once a stomping ground for the literary greats – from Bram Stoker to T.S. Eliot.





# The living spaces

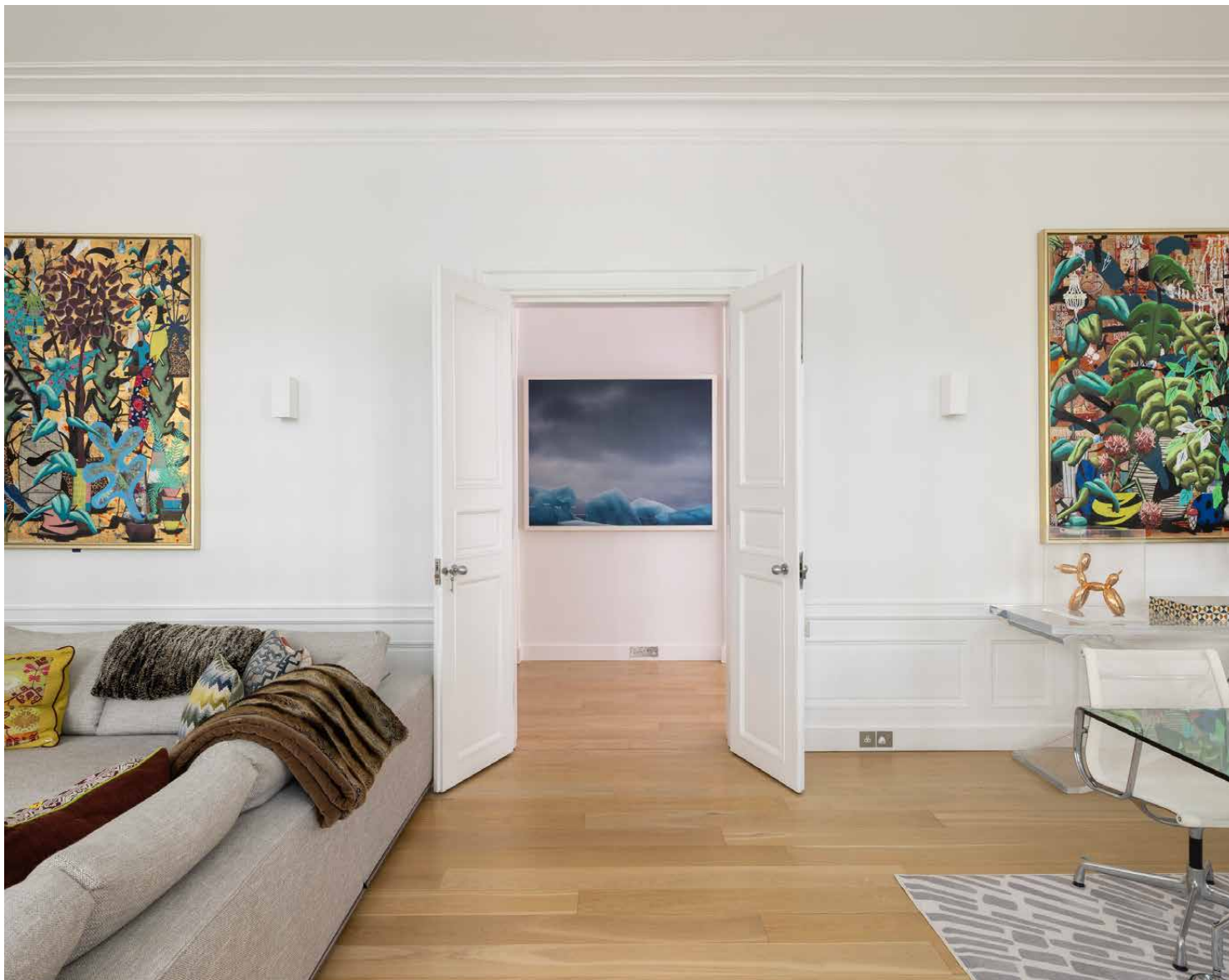
The flagstone entrance hall sets a distinguished tone, transitioning into warm timber underfoot as you step into the formal dining room. Period details draw the eye— delicate cornicing crowns the ceiling, cast-iron radiators lend a decorative flourish and a stately antique fireplace anchors the space. Natural light pours through towering sash windows, illuminating every detail.

Follow the central hallway to the heart of the home: a generous kitchen tailored for entertaining. Sage cabinetry conceals state-of-the-art appliances, dual sinks add functionality, and a dining table invites relaxed gatherings. Bespoke shelving and expansive sash windows continue the sense of light and comfort. On the same floor, a library is set for quiet reflection, while on the half-landing above, a gym with a shower room provides an energising space to retreat to.

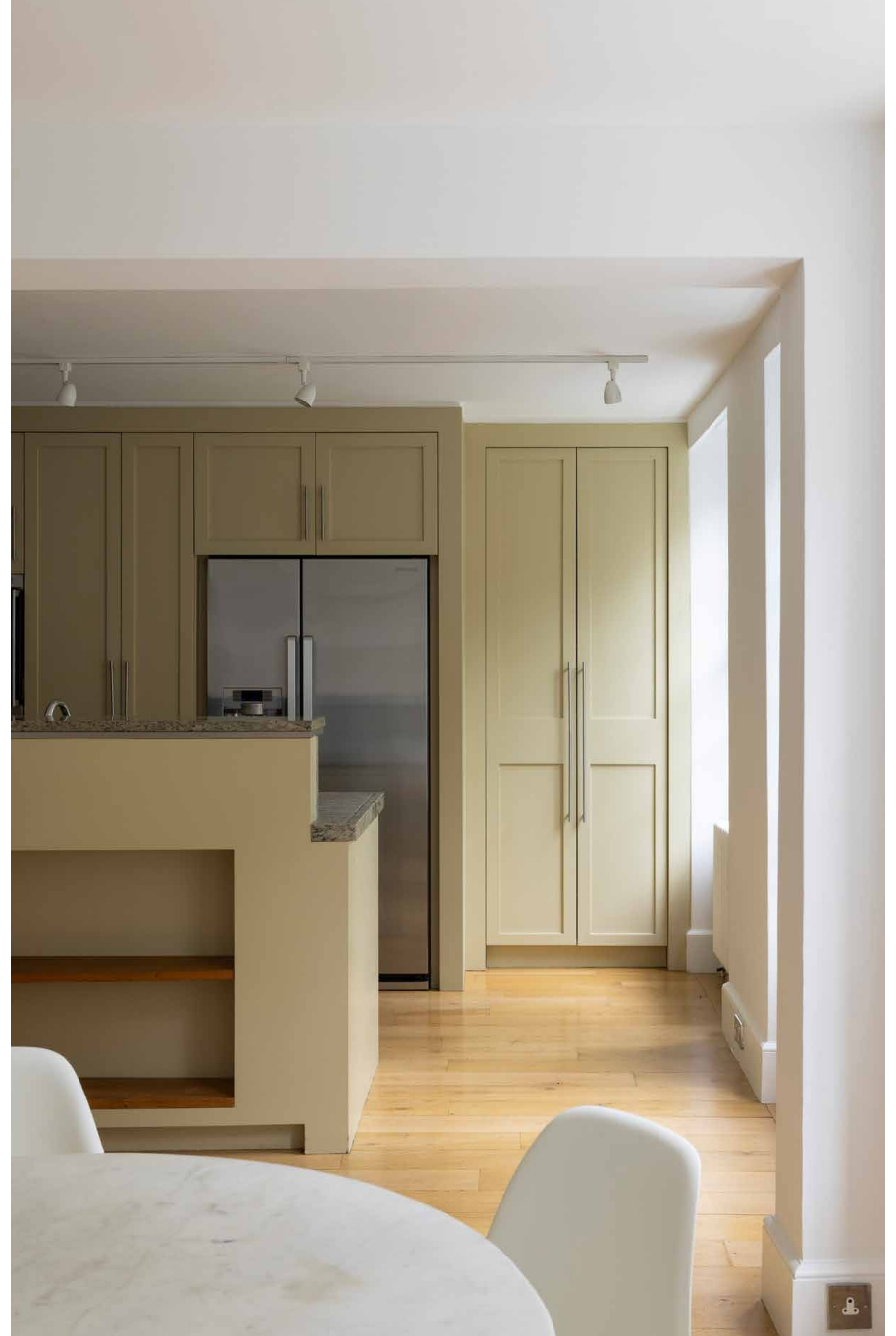




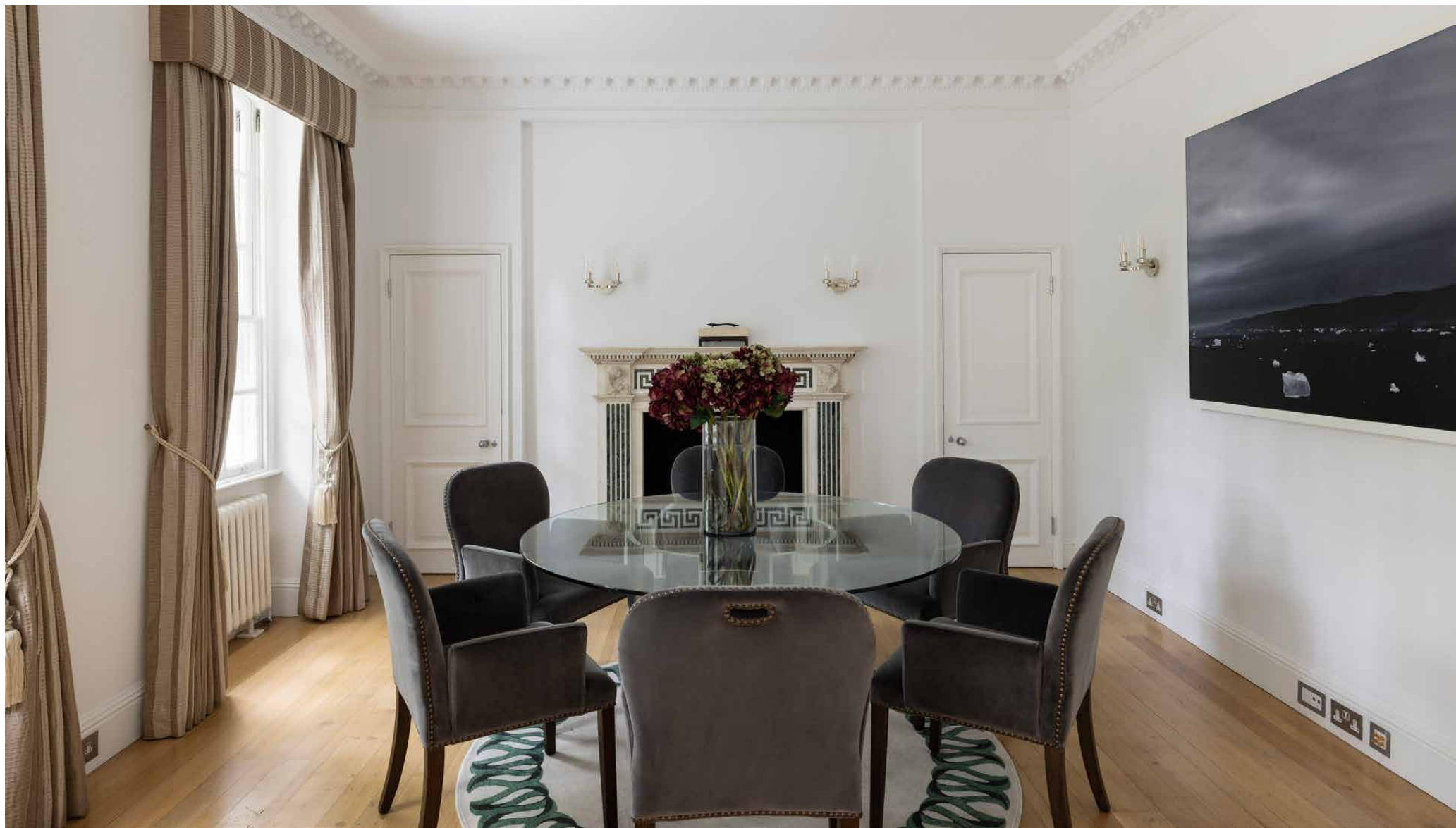




The pièce de résistance of the home's social spaces is the first-floor reception room. Double doors open into a room that spans the width of the house, bathed in daylight from a bank of south-facing sash windows. Here, art-covered walls and a decorative fireplace backdrop both intimate evenings and lively dinner parties, with a dining space at one end and a cosy lounge at the other.









# Bedrooms & bathrooms

Ascend the sweeping spiral staircase to the principal suite, which claims the entire second floor. Gallery-white walls and polished wooden floors bring a contemporary calm, while classical touches – ornate corning and a decorative fireplace – ensure the space is grounded in its heritage. An emerald velvet bed and a patterned pouffe create an enticing sleep setting. Through a sliding door, a private living room is a secluded place to relax, a feeling that continues into the en suite bathroom, with its central free-standing bathtub, rainfall shower and garden outlook offering spa-like serenity.

On the floor below, the second bedroom features a walk-in dressing room and a luxurious en suite, complete with its own freestanding bathtub. Another guest sits on the demi-floor and boasts its own study and access via a lift. Meanwhile, the lower ground floor hosts the final bedroom, with an accompanying bathroom, alongside the home's utility room.



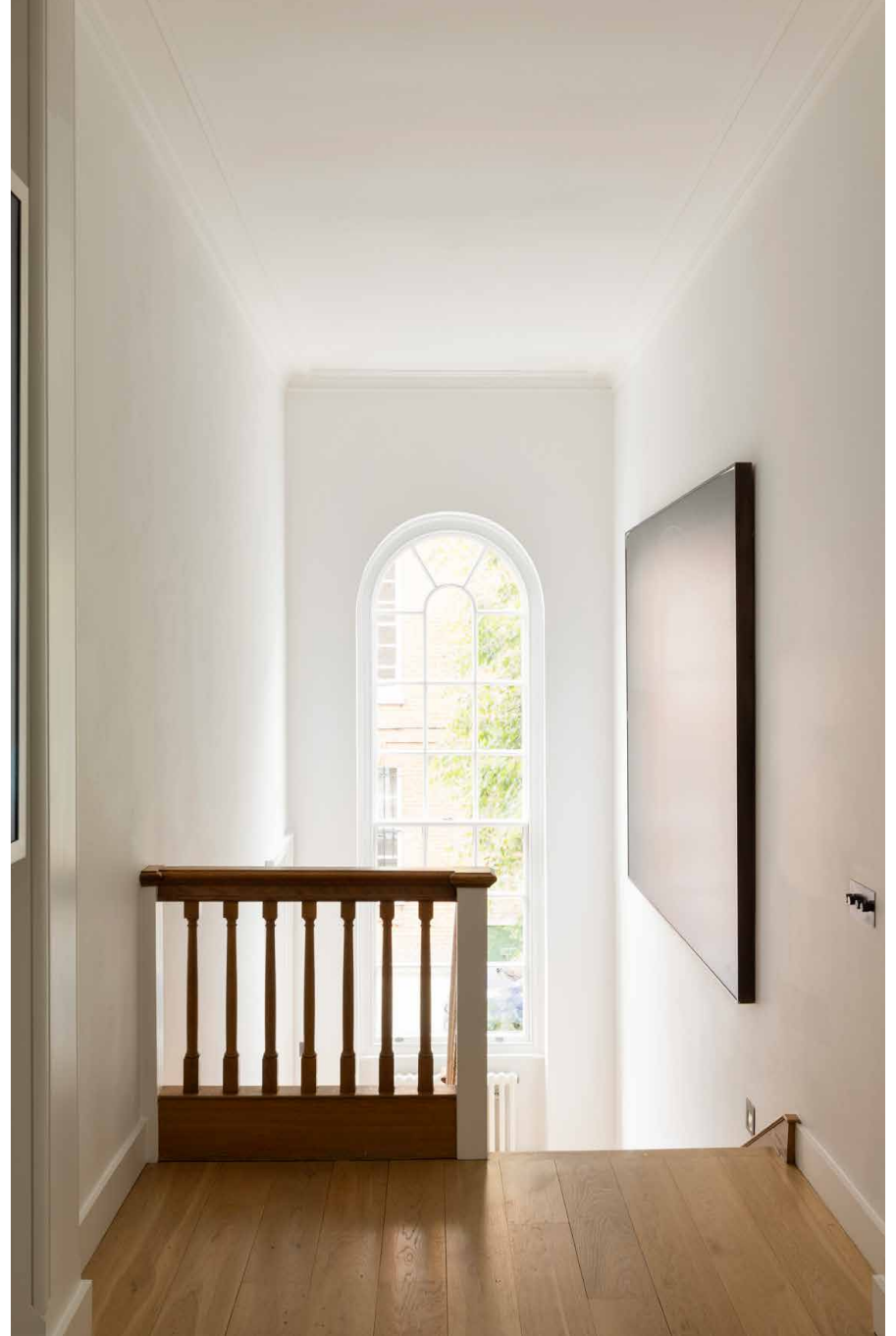






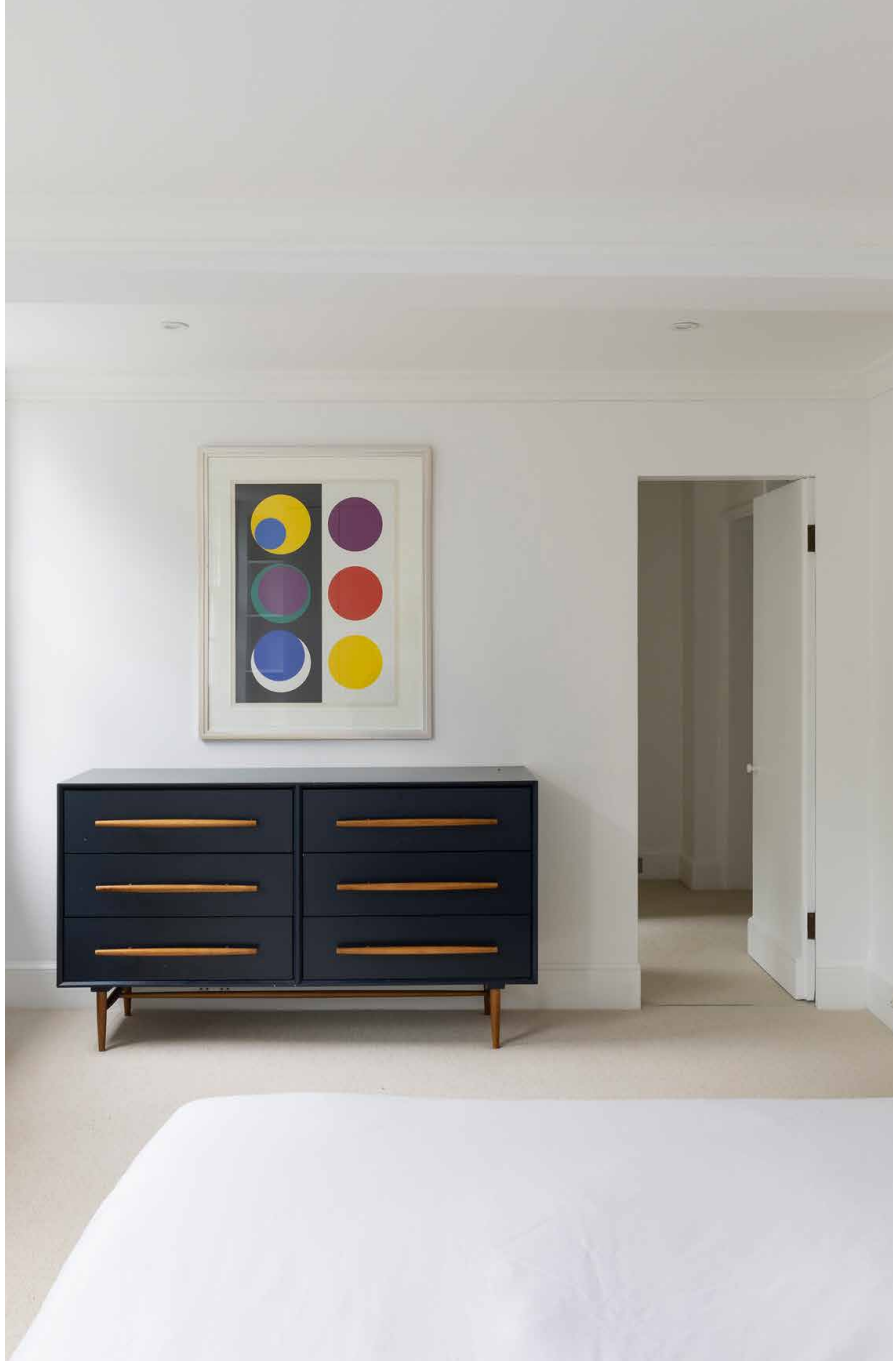






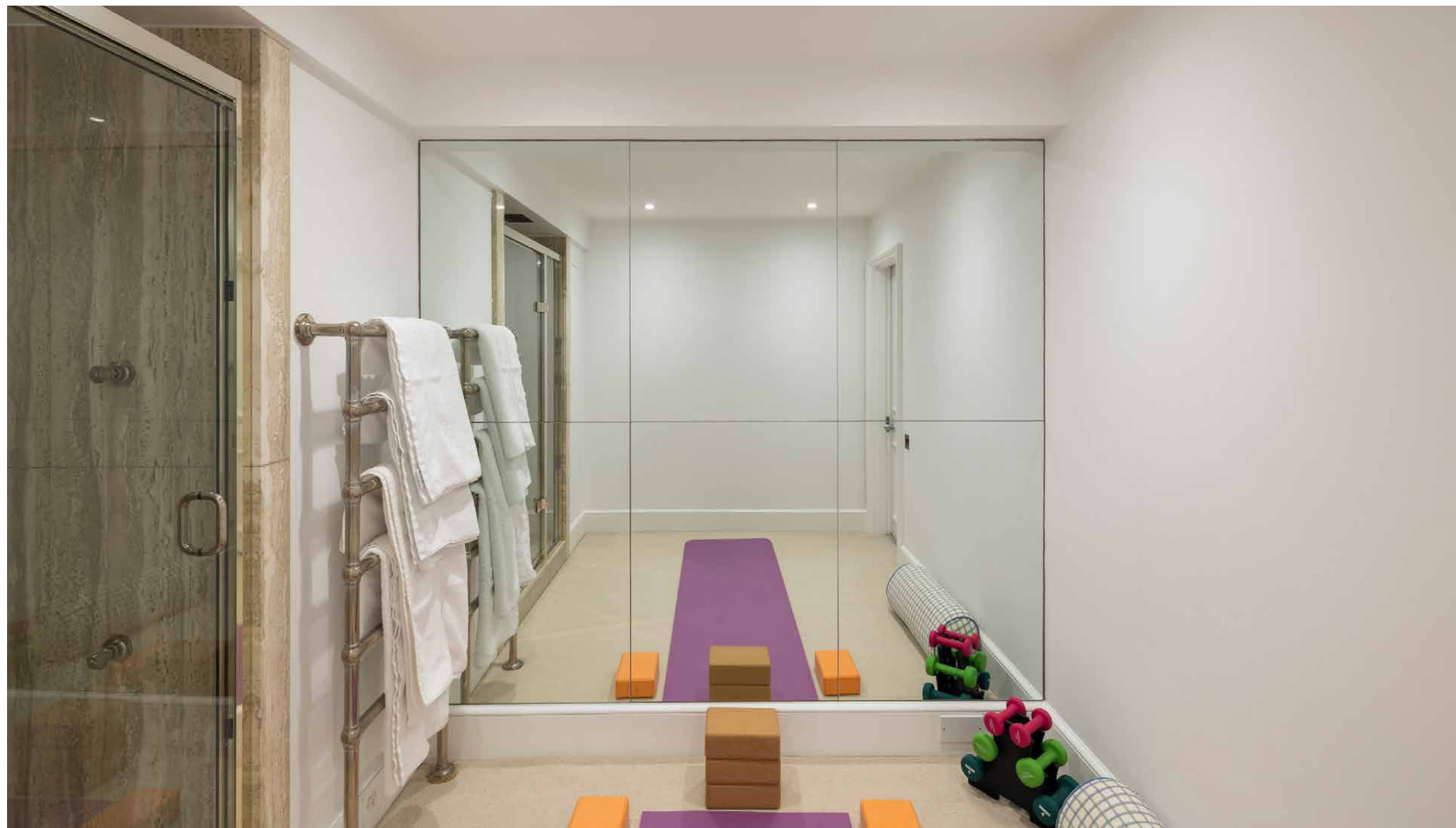
















## Outdoor space

From the kitchen, a glass door leads to a private courtyard garden – a quiet, leafy escape in the heart of Chelsea. Enclosed by mature trees and foliage, the patio is perfectly suited to outdoor dining and evening gatherings. A set of steps descends to the lower ground floor, blending inside and out with ease.

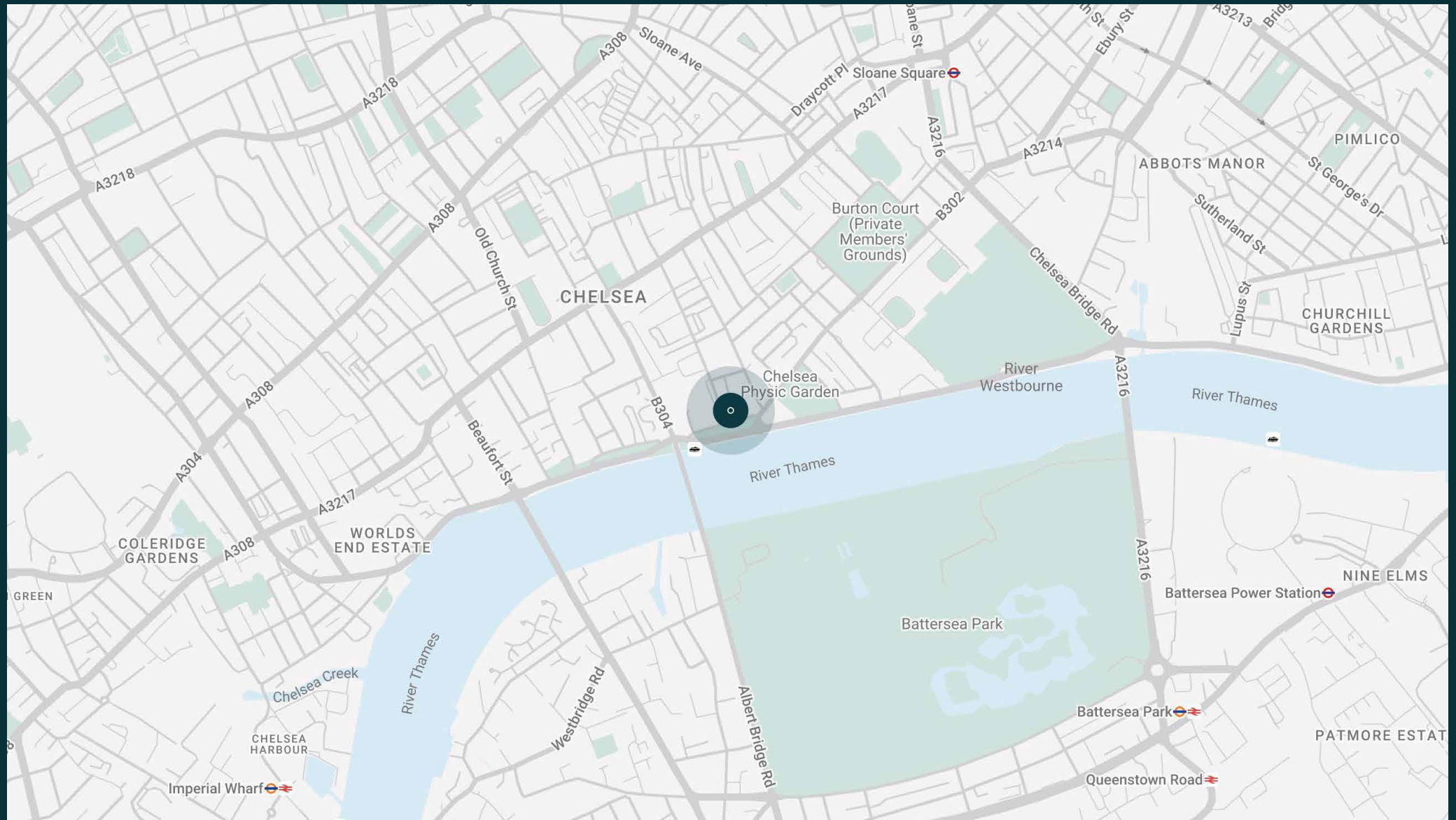


# The neighbourhood

All the delights Chelsea has to offer are on your doorstep at Cheyne Walk, where a waterside location unites with urban convenience.

Begin the day working up a sweat with a vinyasa flow yoga session at Triyoga or caffeinating over brunch at Bluebird. Head to the river for a scenic stroll along its banks then venture to the King's Road for some window-shopping. Enjoy a drink at Chelsea establishment, The Cadogan Arms, before tucking into Greek delicacies at Bottarga and hunkering down for a film at The Everyman. For special occasions, book a table at two-Michelin-starred Claude Bosi at Bibendum.







- Formal reception room
- Contemporary kitchen and dining room
- Open-plan living and dining room
- Principal bedroom suite with two dressing rooms and a snug
- Guest bedroom suite with a lift and study
- Guest bedroom suite with a dressing room
- One further bedroom suite
- Family shower room
- Three cloakrooms
- Library
- Study
- Utility room
- Gym
- Courtyard garden
- Royal Borough of Kensington & Chelsea

Approx. Gross Internal Area = 6,139 sq ft / 570 sq m

**FIRST FLOOR**

12m x 17m (12.0m x 17.0m)

RECEPTION ROOM (CL. 3.1m)

BEDROOM (CL. 2.4m)

DRESSING ROOM

BATH

UP

**SECOND FLOOR**

12m x 17m (12.0m x 17.0m)

BEDROOM (CL. 2.4m)

BATH

LIFT

UP

**LOWER GROUND FLOOR**

12m x 17m (12.0m x 17.0m)

KITCHEN (CL. 2.4m)

RECEPTION ROOM (CL. 3.1m)

LIBRARY

BEDROOM (CL. 2.4m)

BATH

UP

**HALF LANDING**

12m x 17m (12.0m x 17.0m)

BEDROOM (CL. 2.4m)

BATH

LIFT

UP

**ADDITIONAL FEATURES:**

- GARDEN
- VOID
- UP
- DOWN



# Guest & concierge services

Our concierge team are here to help guests settle in, seamlessly. Centre court tickets to Wimbledon, Premier League seats with the best views, Savile Row tailors on standby, or a private chef to cater to individual tastes – we aim to elevate every stay.

From the moment of booking with us, each guest has a single point of contact to finesse the details. Our statement spaces are just the starting point – to ensure everyone feels at home, our rates include:

- 
- Weekly housekeeping
  - Flexible check-in/out
  - Luxury linens and Bamford toiletries
  - Legal compliance on all our homes
  - A personal welcome and arrival essentials
  - Unlimited access to guest services and tailored experiences
  - Professional inventory inspection before and after every stay
  - Access to a curated portfolio of sole agency properties







Please get in touch if you have any questions  
or require any further information.

---

[hello@domusstay.com](mailto:hello@domusstay.com)

+44 (0)20 8168 8880

The property particulars are a guide not statements. Descriptions, photographs, and plans are for guidance only. The Property is offered "subject to contract and references". No warranties, representations, License or Tenancy is given by Domus Stay. Our full disclaimer together with trading names and our Privacy Policy is shown on our website

© Domus Stay 2025. All rights reserved.

