

domus
stay.

Chepstow Road

Notting Hill W2

3 Bedrooms, 3 Bathrooms
For 6 guests





Colour, artisanry and curated detail lie behind this impressive townhouse to rent in Notting Hill.

Quintessentially Notting Hill in both style and spirit. With its stucco façade and intricately decorative ironwork, there's a distinctly traditional feel to Chepstow Road. Inside, all four storeys joyfully combine classic bones with contemporary creativity, drawing inspiration from the playful interiors of designers Beata Heuman and Octavia Dickinson.

Stepping off the leafy street and through the sage front door, monochrome basket-weave tiles pave the way to the double reception room. A dual aspect outlook accentuates the sense of space, as Farrow & Ball hued walls add further depth to the period proportions, and delicate cornicing adorns the ceiling.

To the front, an antique feature fireplace anchors the room, surrounded by eclectic artwork by international artists including Julius von Bismarck, Rosemarie Trockel and Felix Kiessler, and Trove sofas perfect for cosy evenings in. To the rear, a reading room and study; grab a book from the shelves and enjoy the views out over the patio garden through a triple-height expanse of glass.



“

A dual aspect outlook accentuates the sense of space, as Farrow & Ball hued walls add further depth to the period proportions, and delicate cornicing adorns the ceiling.







On the garden level, the open-plan kitchen and dining room is the heart of the home, with a large table and wishbone dining chairs to seat six. The culinary setting combines form and function, with sleek black and white cabinetry housing integrated appliances. A rice cooker, Sage Espresso machine and Le Creuset cookware make this the ideal setting for any chef. A rich, earthy red accent wall brings warmth to the space, as arched doorways and wooden floors provide a timeless counterpoint to contemporary flourishes.











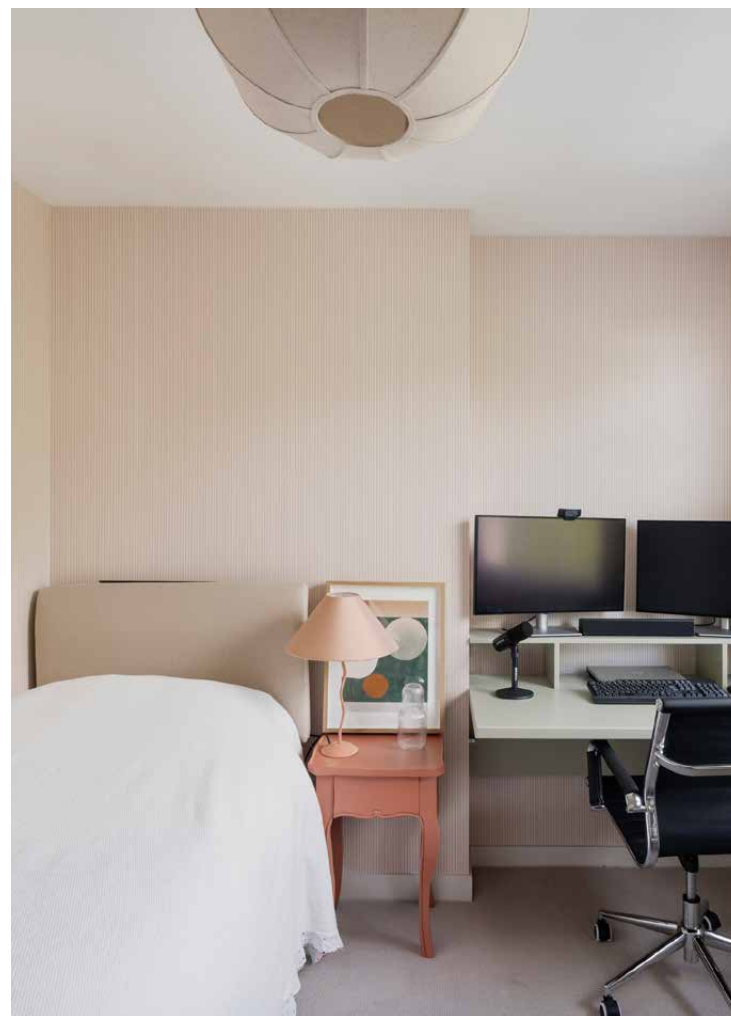




Sisal carpet-lined stairs lead the way to the first floor where the principal suite sits as a sanctuary of relaxation. With pale green walls and furniture in an array of pastel hues, the bedroom is calm and considered. Custom-built wardrobes ensure ample storage, illuminated by two full-height sash windows. The en suite enjoys double basins and a standalone bath backdropped by a wall of iridescent mosaic tiles. Up on the second floor, two further bedrooms overflow with soft tones, finished with Farrow & Ball wallpaper. These are served by a family bathroom.









An urban oasis unfolds from the vast glass doors in the dining room. Surrounded by white walls wrapped in a cascade of wisteria, it's a private suntrap filled with flourishing shrubs and plant-filled pots. On sunny days, enjoy a morning coffee or a long lunch at the bistro-style outdoor table.

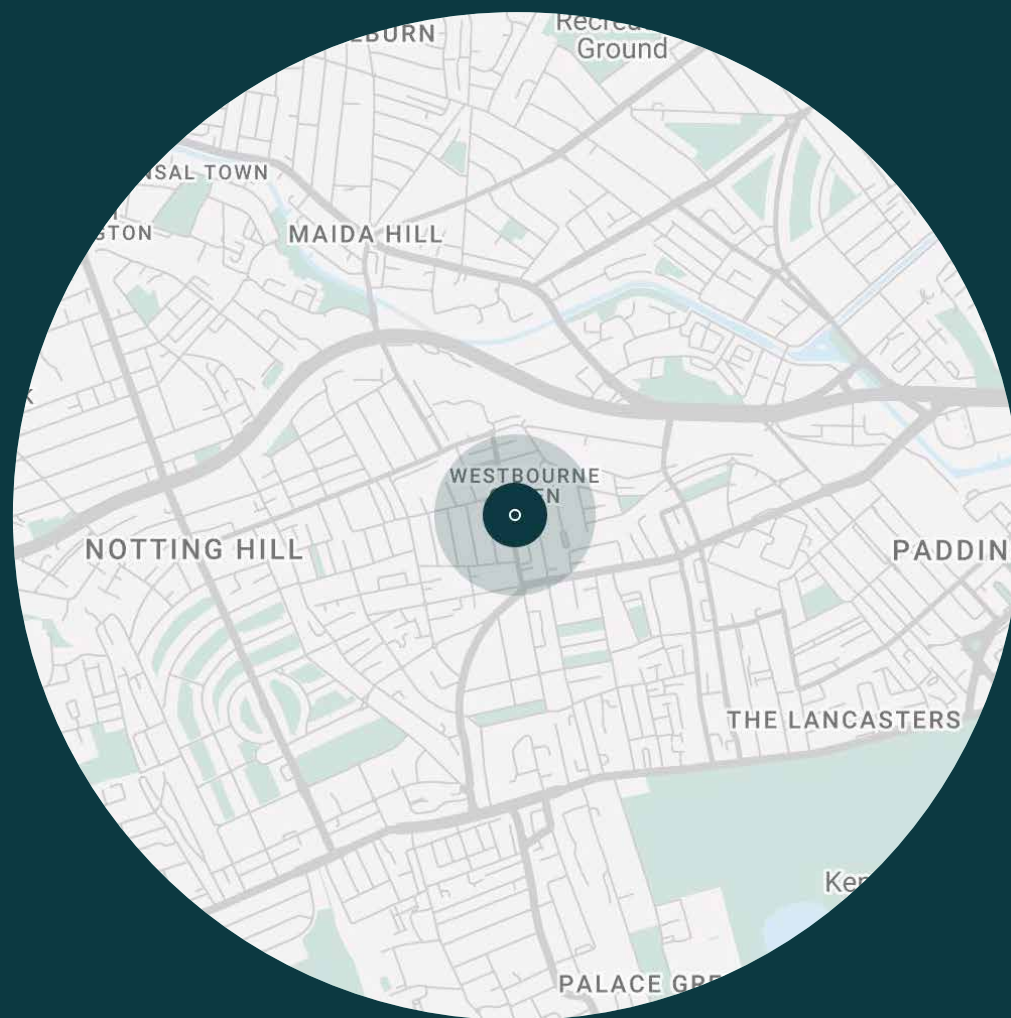




LOCATION

A peaceful spot not far from the bustle of Portobello Road and Westbourne Grove, Chepstow Road is an idyllic setting to experience Notting Hill living.

Start the day with an uplifting workout at Psycle, then enjoy a well-deserved brunch from Granger & Co. or Beam. Spend an afternoon wandering the antiques and vintage stalls on Portobello Road. Come evening, there's myriad dining spots on your doorstep. Stop at Cépages Wine Bistro for French tapas and boutique wines, or The Barbary or Dorian for fine dining. After, local favourite gastropubs The Cow and The Westbourne are your go-to for drinks.



PROPERTY HIGHLIGHTS

- Double reception room
- Open-plan kitchen and dining room
- Principal bedroom suite
- Two further bedrooms
- Two further bathrooms
- Cloakroom
- Utility room
- Courtyard garden
- City of Westminster



Approx. Gross Internal Area = 1,981 sq ft / 184 sq m

Floor plans are for illustrative purposes only and not to scale. Compliant with RICS code of measuring practice.
Prepared for Domus Stay. Copyright © All Rights Reserved.



Please don't hesitate to get in touch if you have any questions or require any further information.

hello@domusstay.com

+44 (0)20 8168 8880

Domus Stay provides the perfect combination of property, place and personal service for the world's most remarkable people. If you have any questions, or if we can help in any way, please contact us on the above number. Be it about a property you have, a property you want, dates to check or any special requirements you may need, we'd love a chat.

