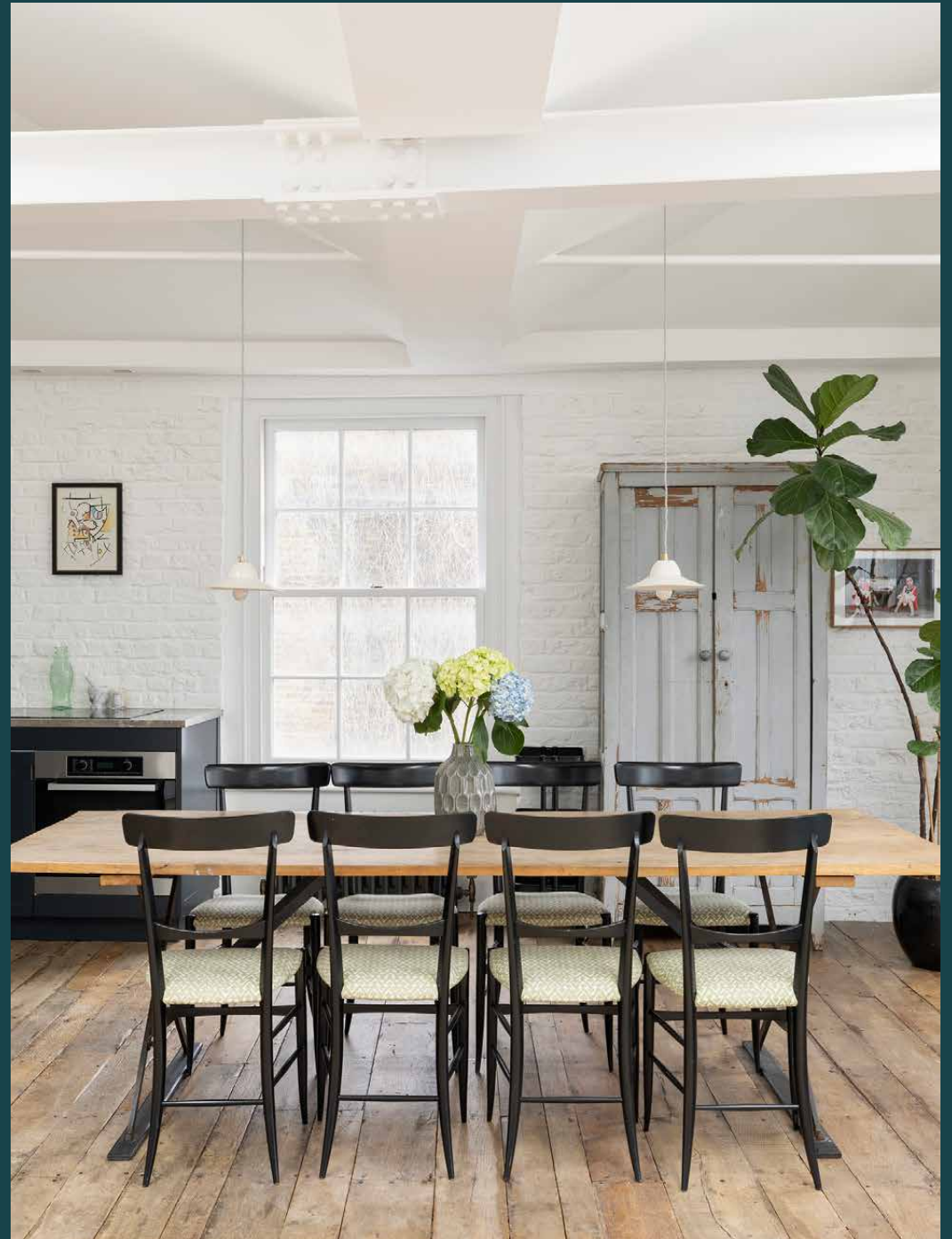

Chepstow Crescent

Notting Hill W11

2 Bedrooms, 1 Bathroom
For 4 guests





Architectural interventions and a playful material palette invigorate this two-bedroom apartment just a stone's throw from Portobello Road.

Redrawn with the imaginative eye of Michaelis Boyd, this second-floor apartment sets an inspiring stage for city living.

Embracing a loft-style aesthetic, architectural innovations energise a hushed palette of hues in the open-plan kitchen and reception room. A convivial space to unwind or entertain, swathes of sunlight filter down from a butterfly vaulted ceiling. Playful patterns and textures infuse personality, from painted brick detailing to considerably sourced wooden floors, carefully reclaimed from a mill in France. Just sink back into the sofa, switch on the fire and relax.

Inky cabinetry crafts a considered space to cook, with smooth stone worktops lit by spotlights overhead. Suspended pendant lamps bring an air of intimacy to dining, with a Rose Uniacke table that seats eight. Post-dinner, settle into one of the antique 70's Italian armchairs.



Playful patterns and textures infuse personality, from painted brick detailing to considerably sourced wooden floors, carefully reclaimed from a mill in France.



“

Inky cabinetry crafts a considered space to cook, with smooth stone worktops lit by spotlights overhead.





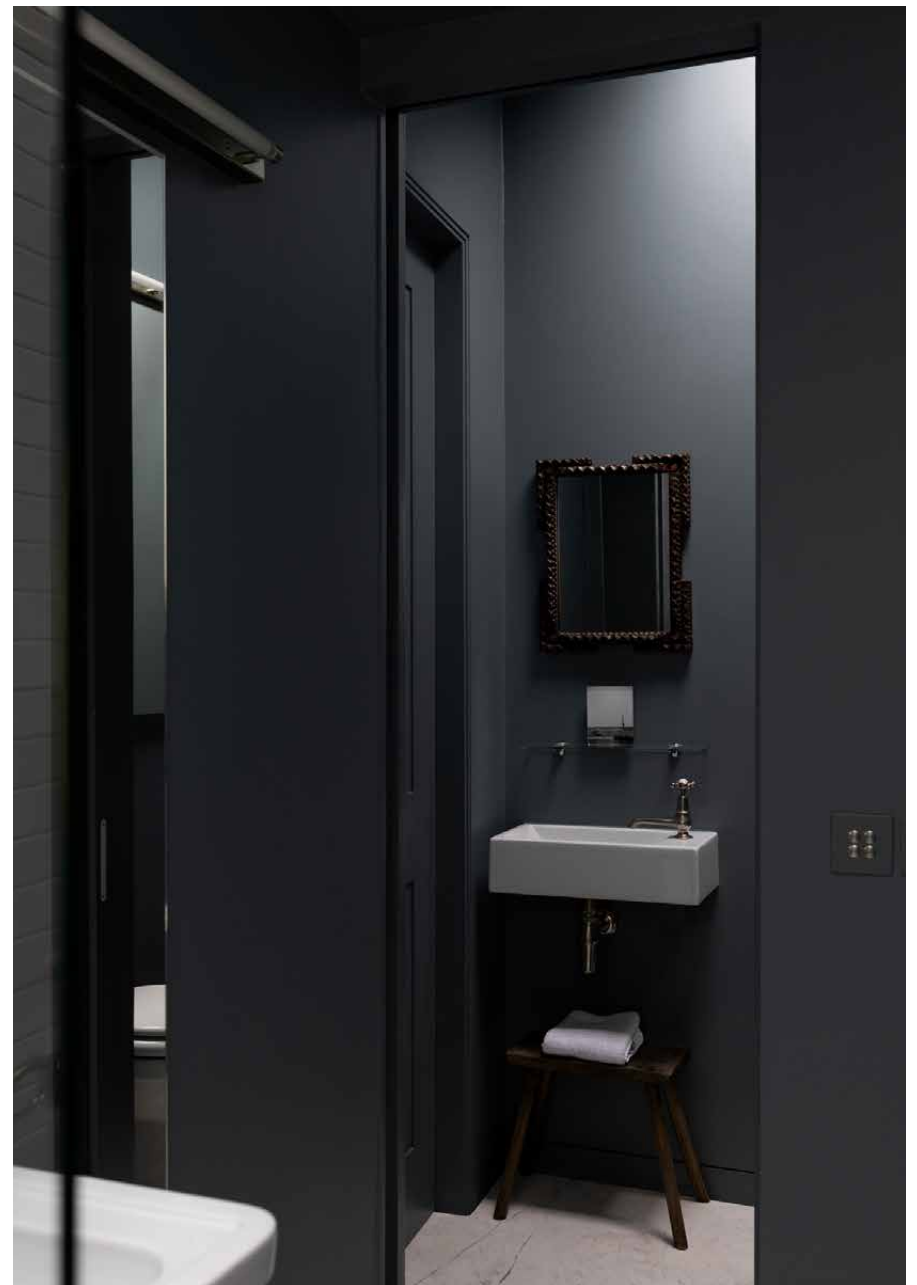
Come evening, two bedrooms are calming sanctums to rest or relax. In the first bedroom, a considered synergy between light, texture and tone unfolds. Alcoves are primed for artwork or oddities, while custom cabinetry frames the bed to enhance the sense of space. In warmer months, draw back the curtains to an intimate balcony – an idyllic spot for morning coffees. Considered styling and acquired antiques adorn the second bedroom, where soft furnishings echo a lively wall of artwork. Enhanced with natural light from two tall sash windows and a skylight above, this soothing setting invites relaxation.





Serving both bedrooms, a sophisticated bathroom is enveloped in deep navy hues. Crafted with hand-made tiles, a walk-in rainfall shower completes the sleek space.

The home additionally offers impressive eco-credentials, with solar and thermal panels fitted on the roof.



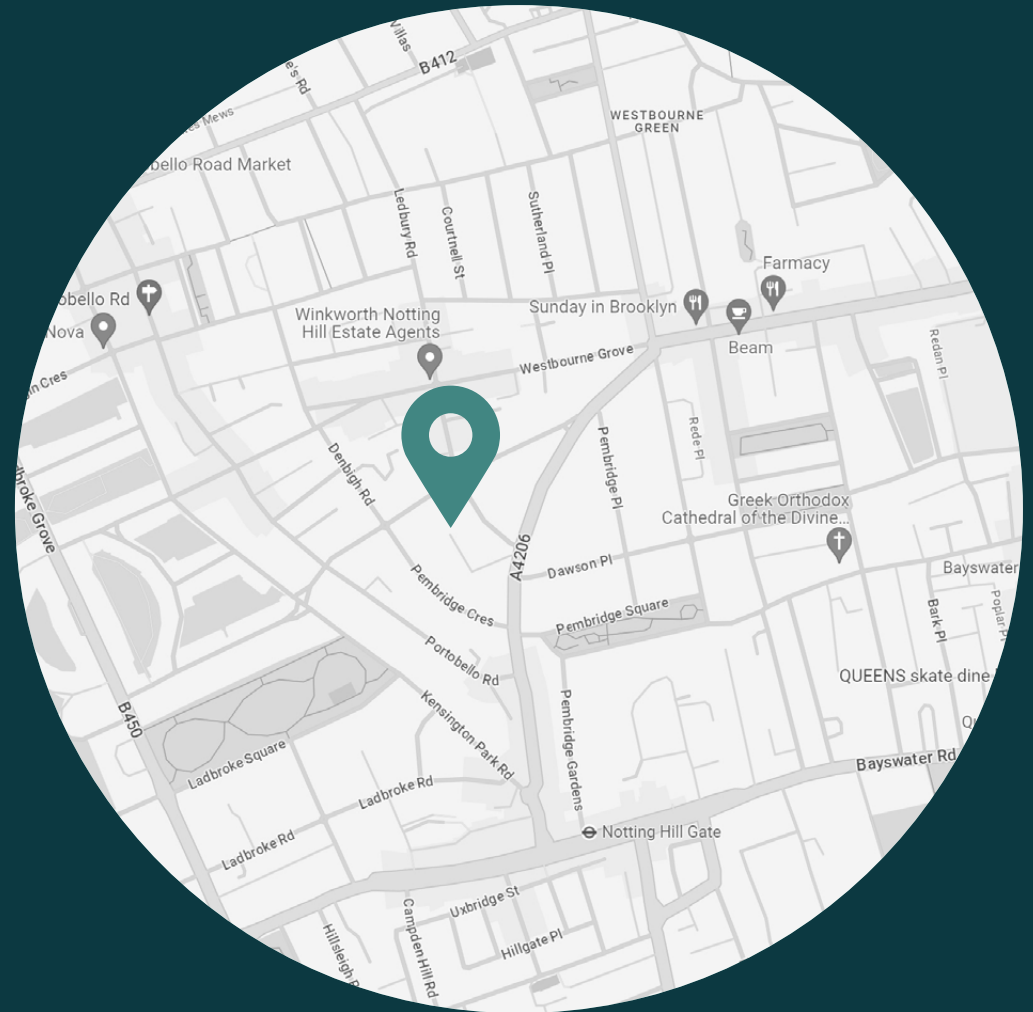




LOCATION

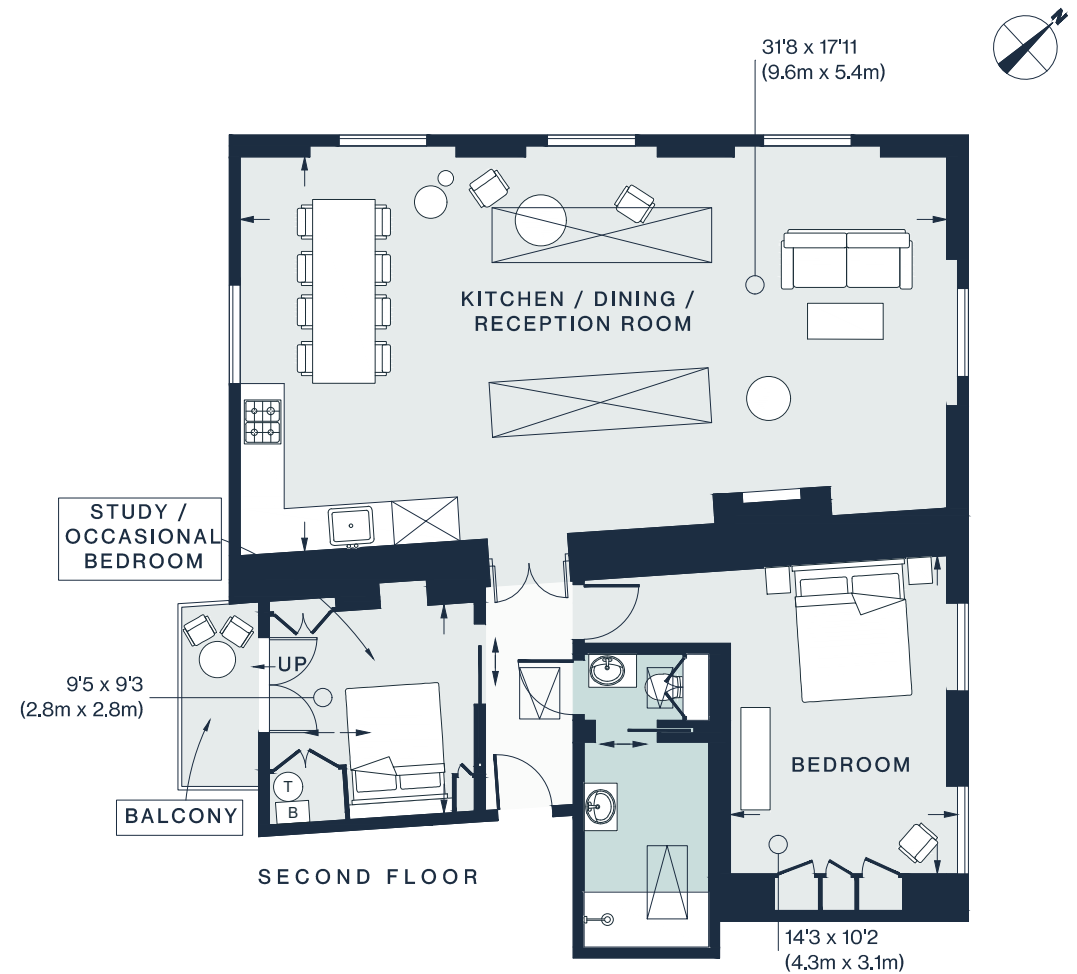
Sitting just moments from Portobello Road, Chepstow Crescent places the neighbourhood's hotspots on your doorstep.

Favourite refreshment haunts Granger & Co. and Ottolenghi are interspersed with coveted boutiques including Reformation and Sézane. Daylesford Organic Farm Shop and Planet Organic are conveniently located for grocery essentials. Kickstart the day with a workout at Bodyism, an early-morning swim at the Serpentine Lido or a run in Hyde Park. Come evening, head up Portobello Road for dinner at Gold, or three-Michelin-starred Core by Clare Smyth.



PROPERTY HIGHLIGHTS

- Open-plan kitchen, dining and reception room
- Principal bedroom
- Guest bedroom
- Shower room
- Balcony



Approx. Gross Internal Area = 1016 sq ft / 94.4 sq m

Floor plans are for illustrative purposes only and not to scale. Compliant with RICS code of measuring practice.



Please don't hesitate to get in touch if you have any questions or require any further information.

hello@domusstay.com

+44 (0)20 8168 8880

Domus Stay provides the perfect combination of property, place and personal service for the world's most remarkable people. If you have any questions, or if we can help in any way, please contact us on the above number. Be it about a property you have, a property you want, dates to check or any special requirements you may need, we'd love a chat.

