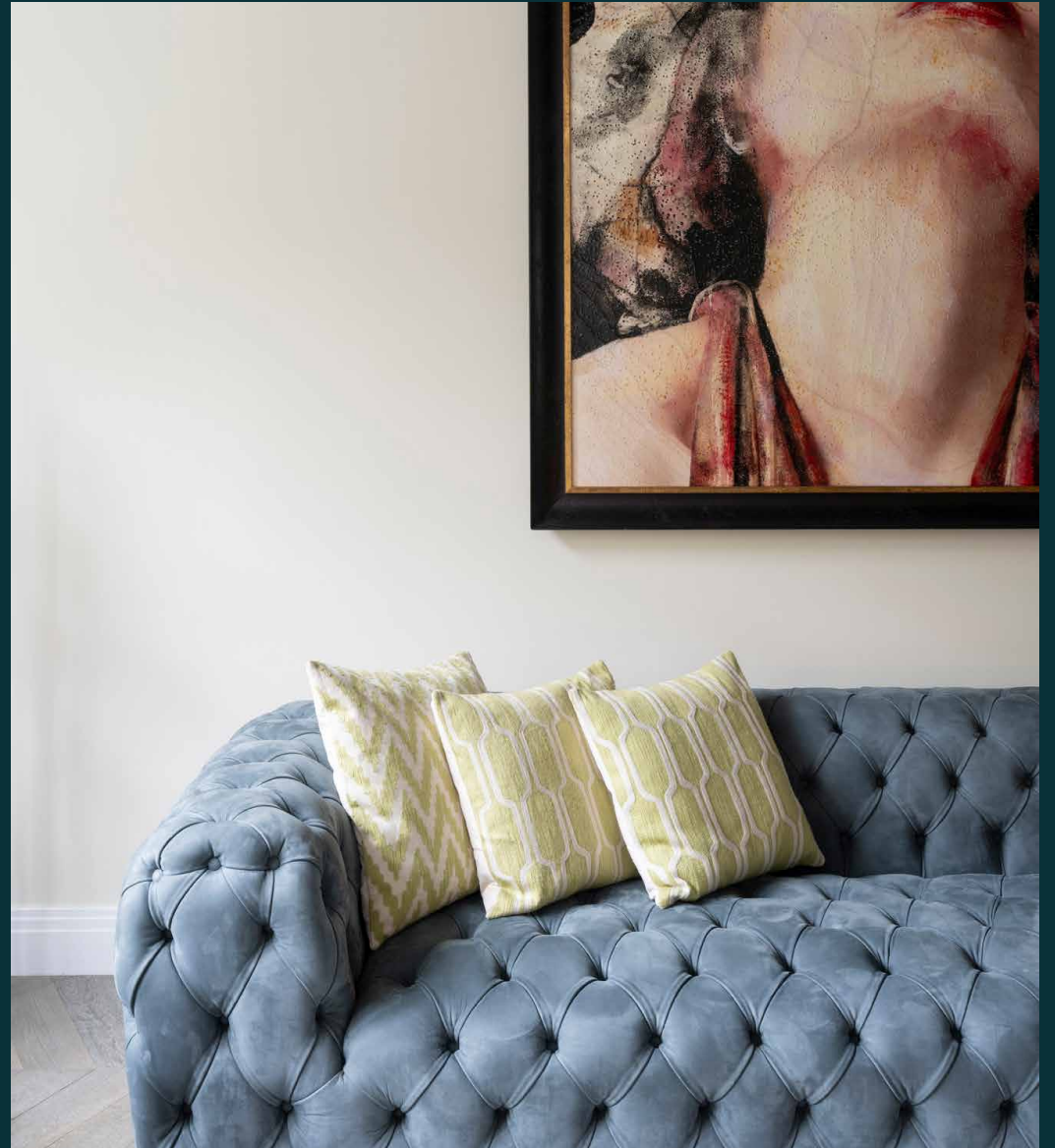


domus
stay.

Chelsea Park Gardens

CHELSEA

5 Bedrooms, 4 Bathrooms
For 10 guests





A semblance of the country
in the heart of central London.
This five-bedroom house to
rent is striking in design.

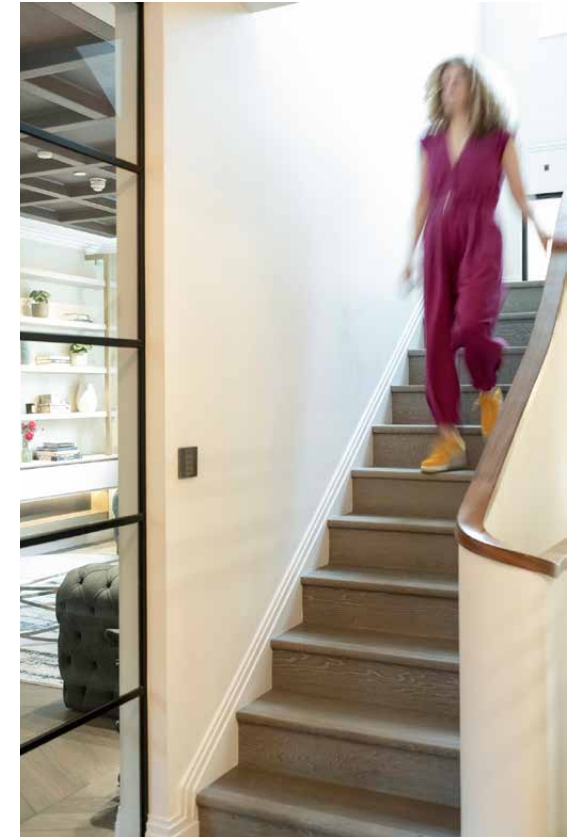
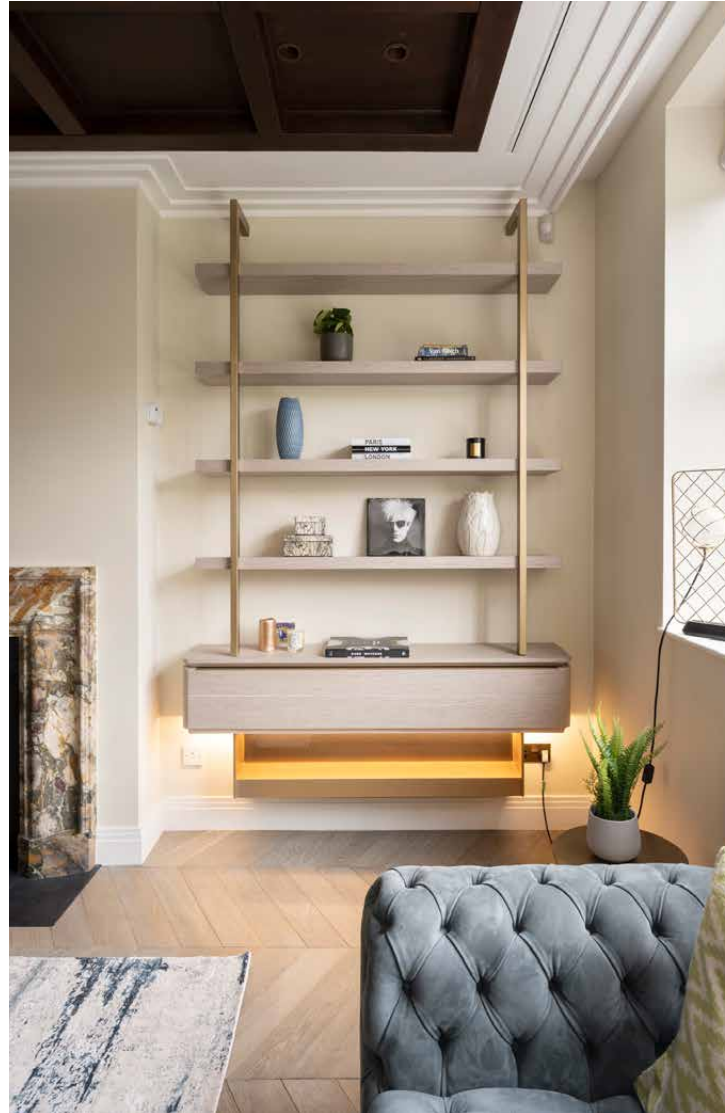
Minutes from the King's Road, this peaceful setting feels miles away from the thrum, even with the epicentre of Chelsea on the doorstep. When you're done exploring, this is the place to kick back. Spread over four floors, contemporary design elevates a family focused layout. Plus, enjoy access to an exclusive communal garden.



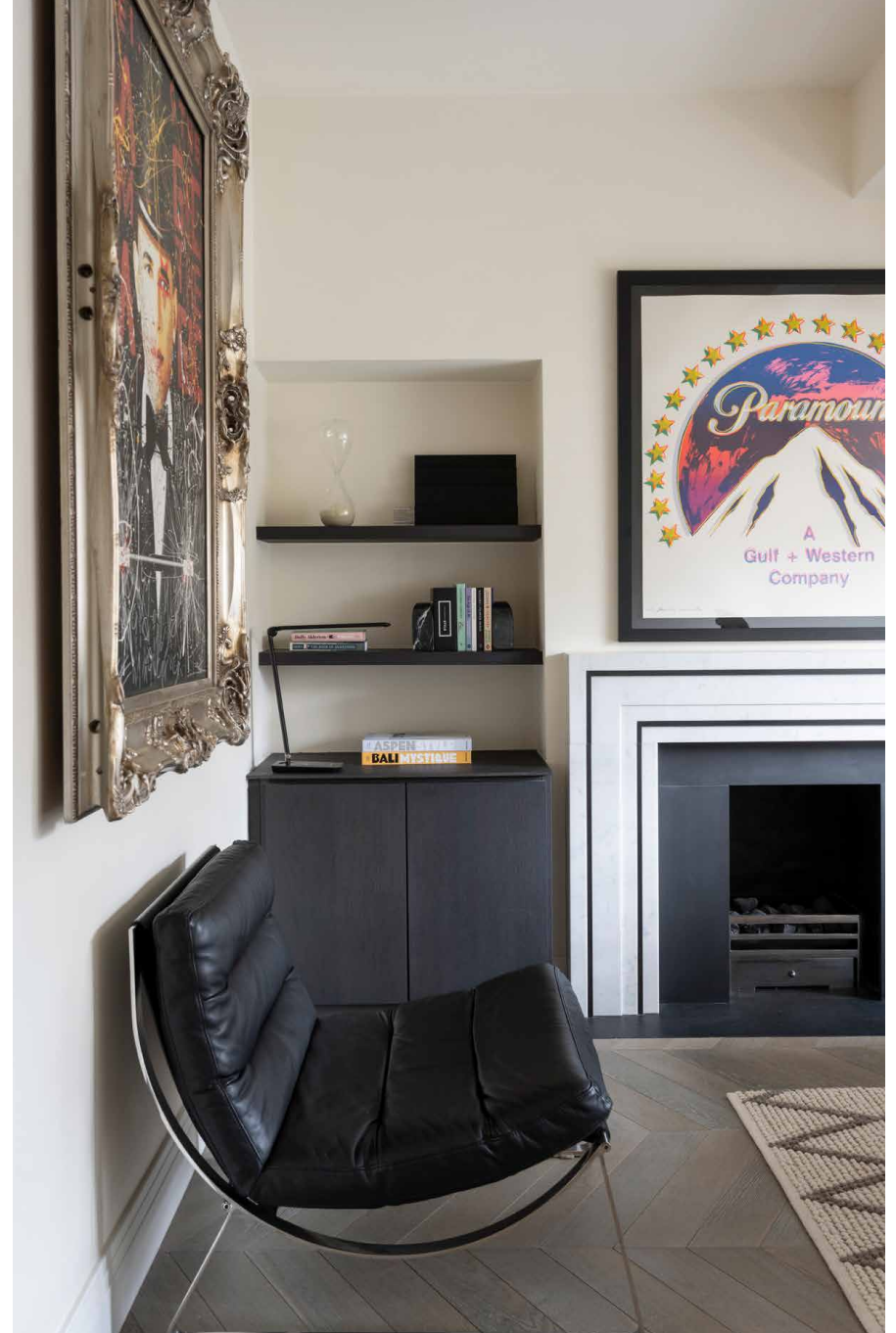
The living spaces

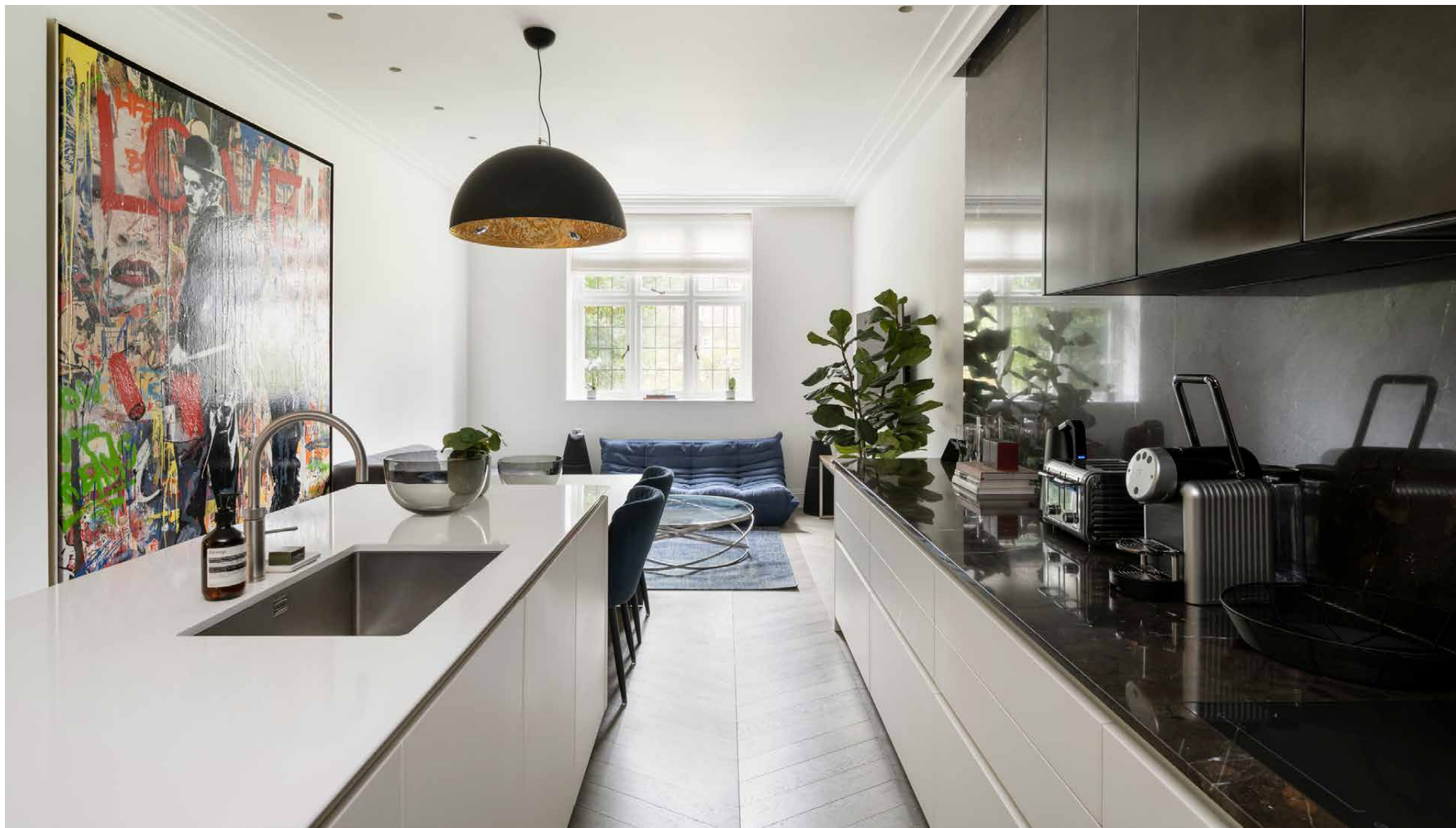
On the ground floor, a double reception room encompasses a formal living and dining space. Every detail has been chosen for comfort without compromising on style. Mock Tudor ceilings and a marble fireplace add warmth, while blue Chesterfield sofas tick the boxes for relaxation. Neutral-coloured walls showcase a gallery of large-scale artworks – a conversation starter for dinner parties around the eight-seater table.

Crittall-style doors lead into a kitchen equipped for every eventuality. Dark burnished cabinetry and stone surfaces stretch to the ceiling, emphasising the generous proportions of the room. There's a breakfast table for informal meals and a B&B Italia sofa, meaning chefs can socialise with the rest of the crew as they cook. From this floor, step out to a secluded patio that opens onto an exclusive communal garden accessed by only nine other houses.











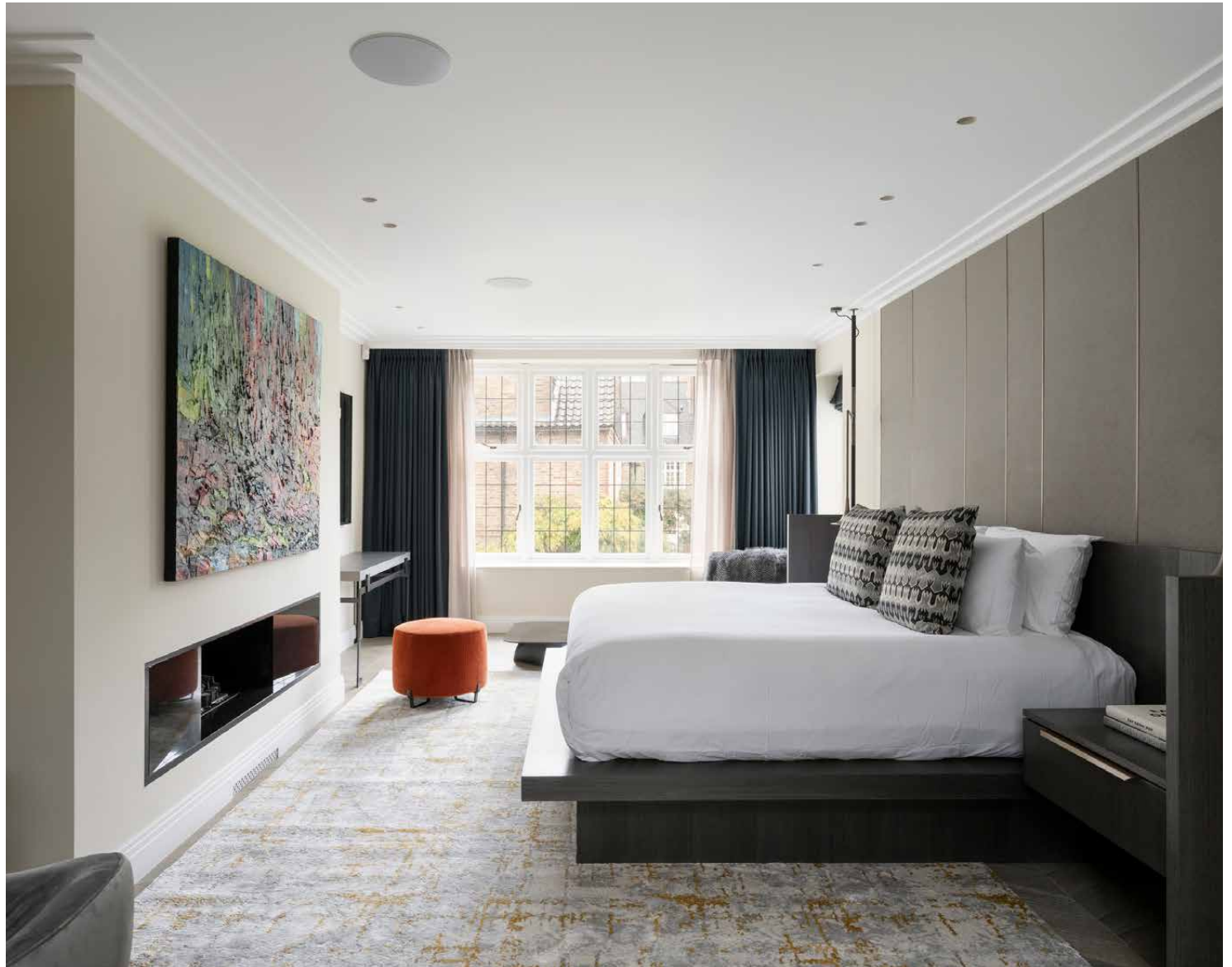


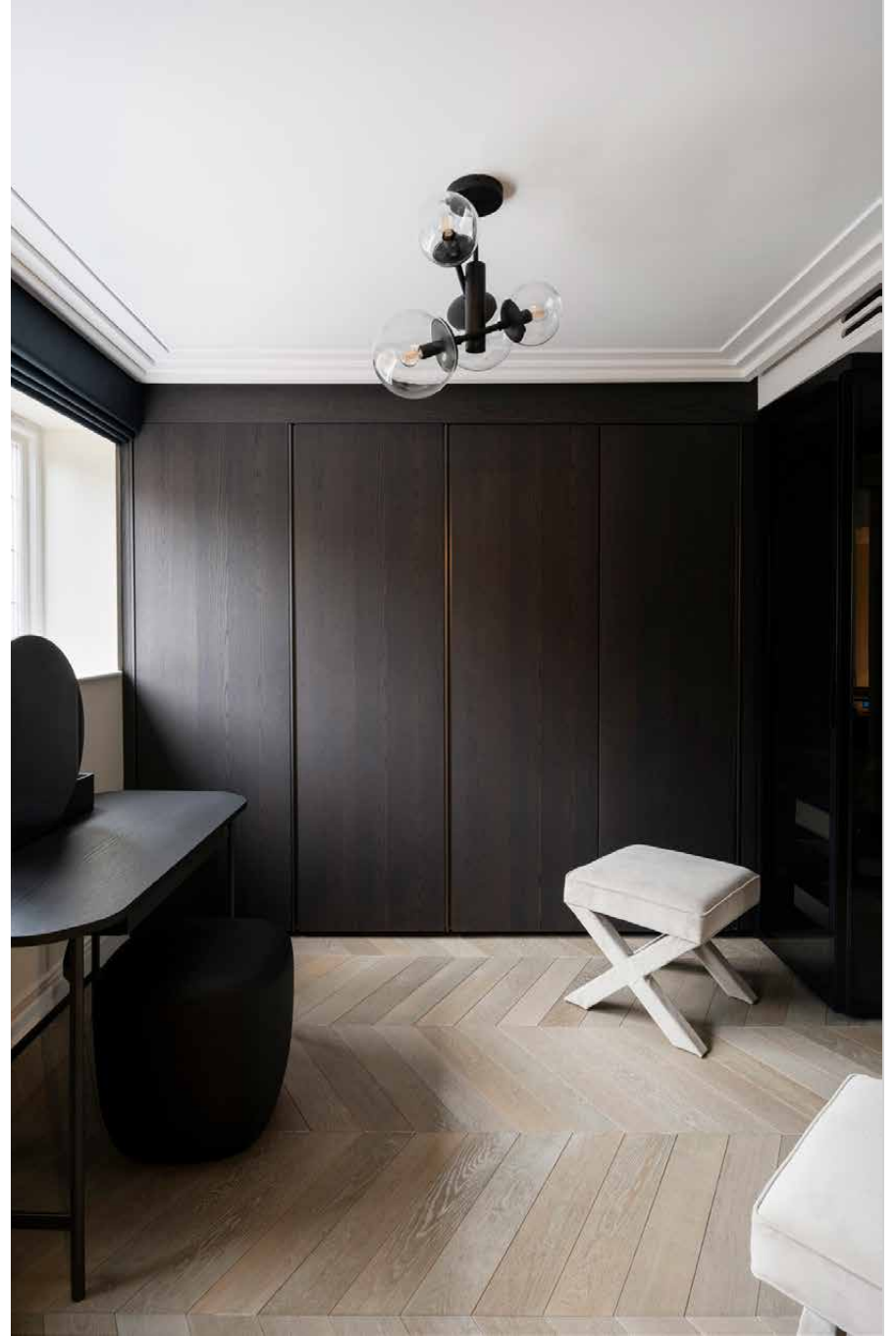
A sculptural staircase leads down to an expansive media room. An atmospheric space that's made for movie nights, four-metre-high ceilings, a L-shaped sofa and a large-screen TV all contribute to the silver screen experience. There's also a pool table to keep everyone entertained. Elsewhere, this floor features a utility room, a cloakroom and an en suite bedroom with access to a patio – an ideal option for a nanny or older children.



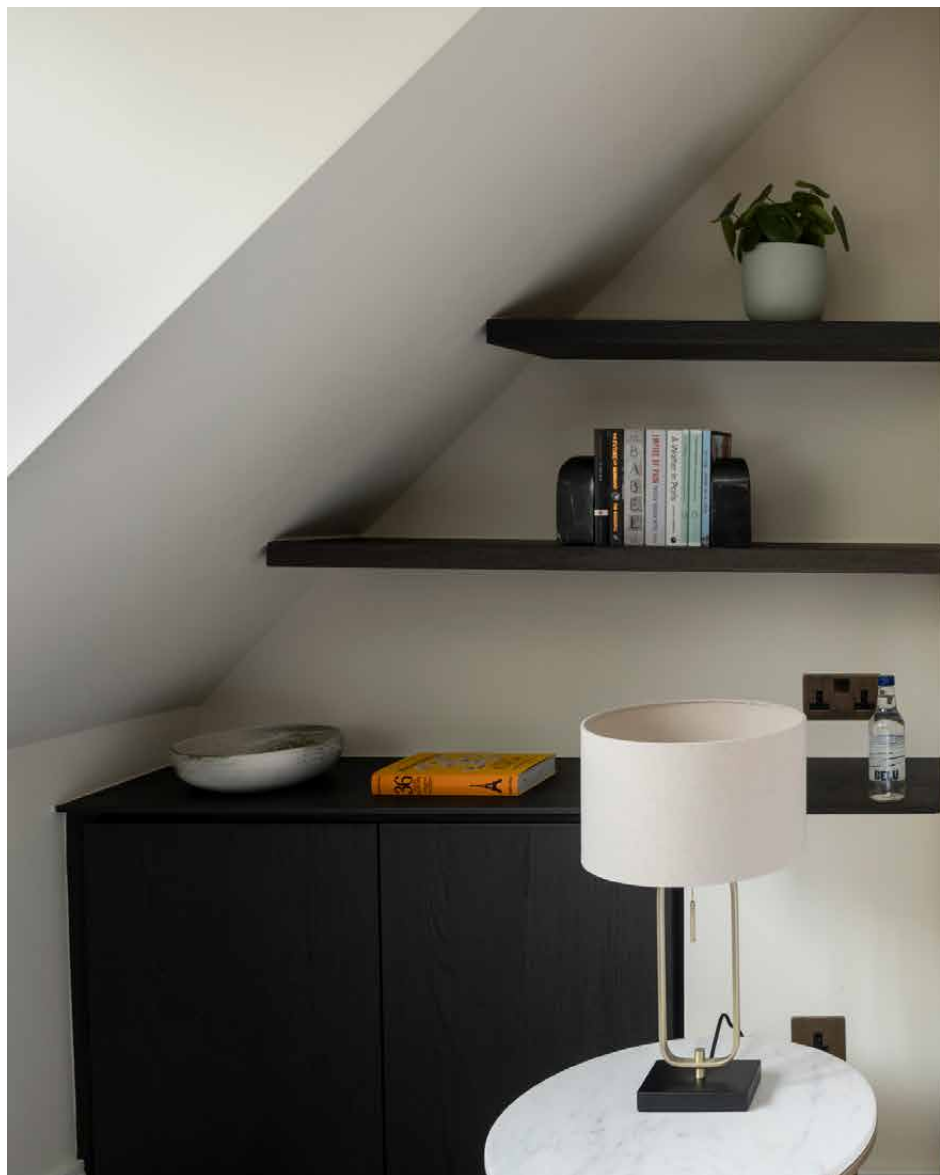
Bedrooms & bathrooms

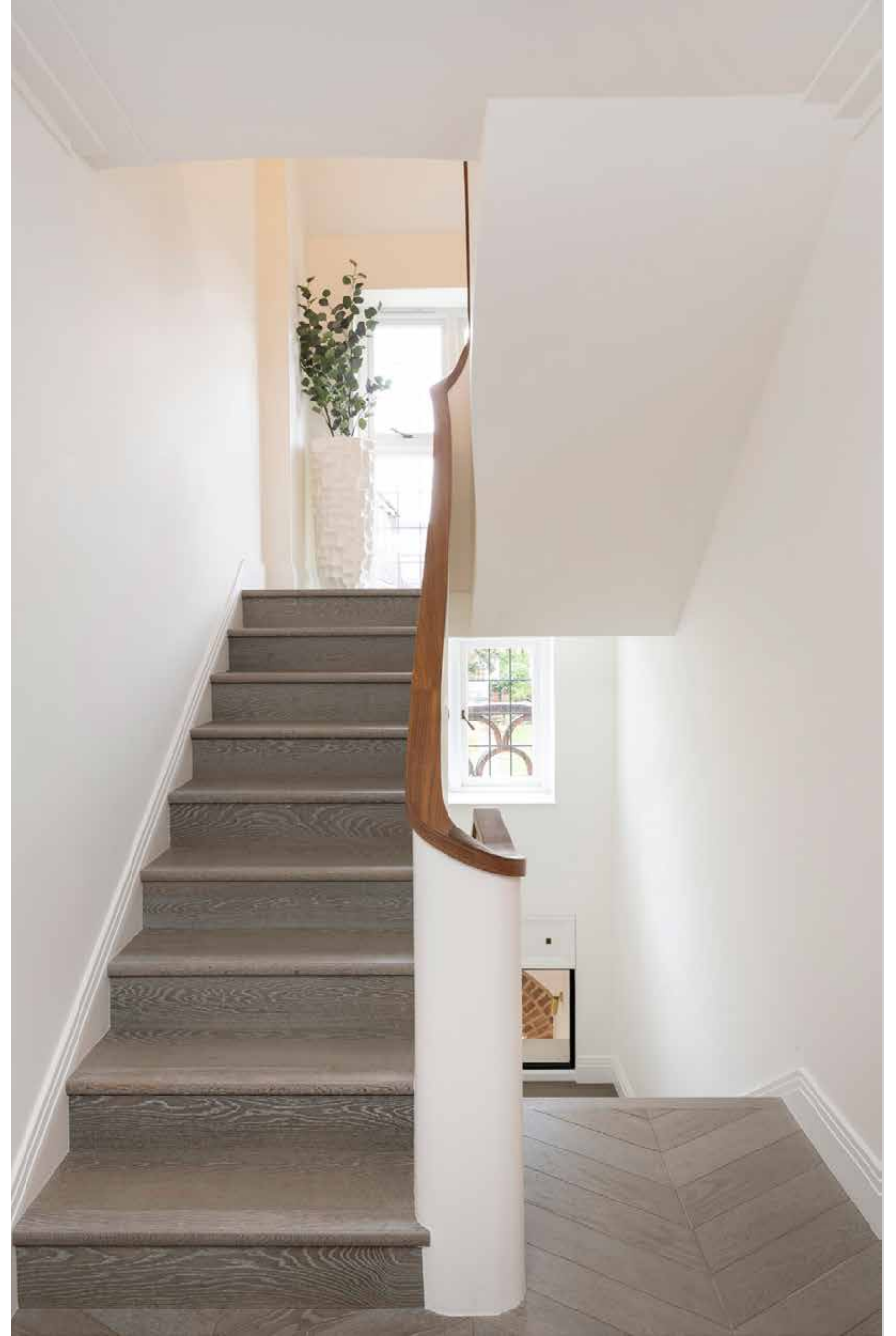
Four bedrooms are arranged over the top two levels. The principal suite is a showstopper of a space. Occupying the entire first floor, it encompasses a walk-in wardrobe and its own TV room, complete with Ligne Roset sofas, a contemporary fireplace and a balcony. Carpets threaded with subtle gold tones and a panelled wall bring softness. From the platform bed, it's only a few steps to the opulent bathroom. Here, a black, egg-shaped bathtub is joined by a huge walk-in shower wrapped in marble.

















Outdoor space

As you ascend to the fourth floor, a sunlit games and television room leads out to the terrace, boasting commanding views across the city skyline. The home's minimalist interior palette is effortlessly translated outside, with pale marble tiles and contemporary seating. After a day along Portobello Road, invite friends and family over for evening drinks and a barbecue. Manicured greenery creates a backdrop of verdant privacy. When you're in need of additional space, make use of the communal garden's green stretch of lawn.

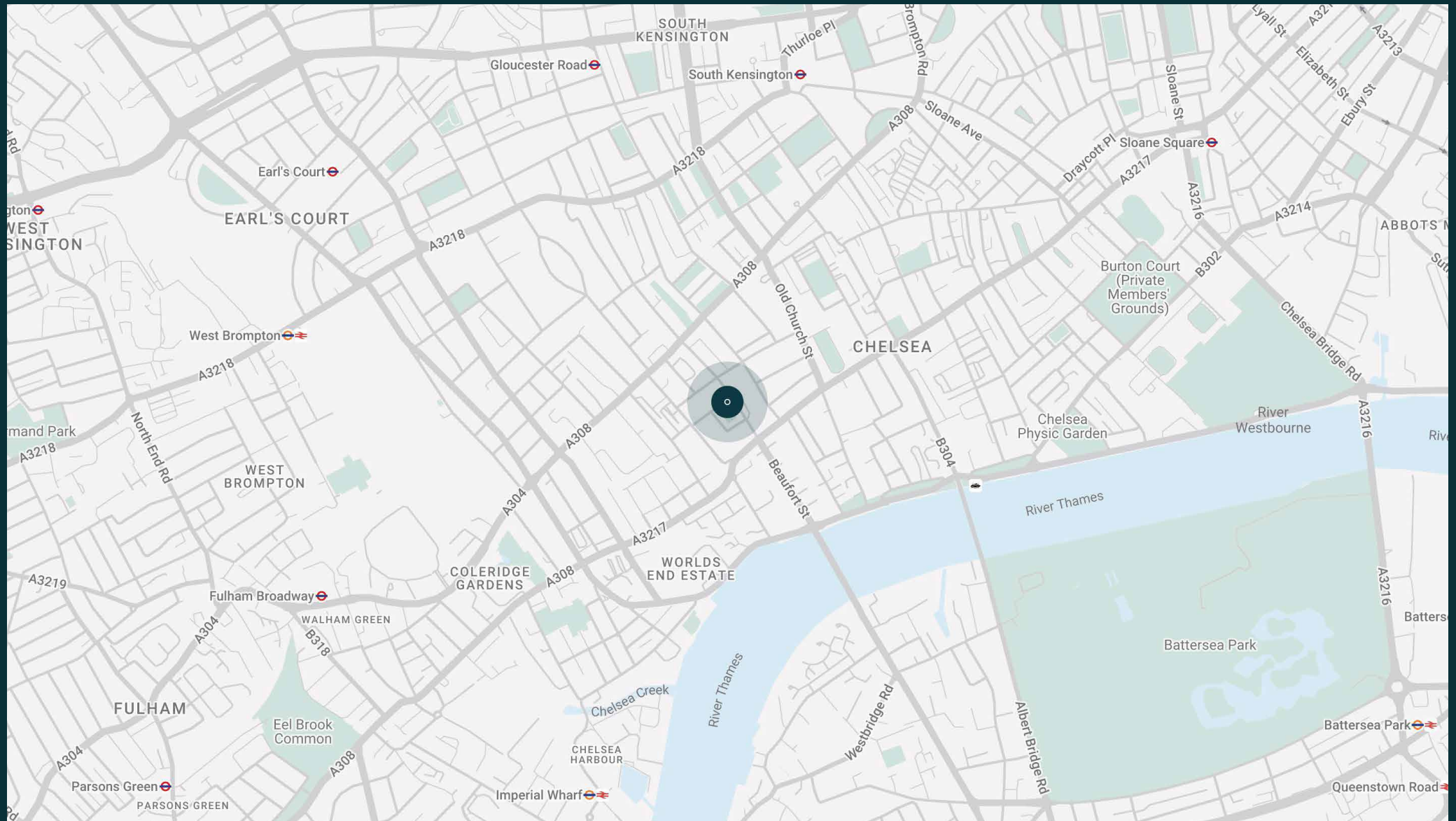


The neighbourhood

A momentary break from the bustle of the King's Road, the best of Chelsea awaits here.

Designer boutiques, Michelin-starred restaurants and people watching potential – all on your doorstep. Good days start with a vinyasa flow session at Triyoga followed by brunch at Bluebird and an afternoon film screening at Everyman. Refresh your wardrobe before dinner at Medlar or Chicama. For special occasions, book a table at two-Michelin-starred Claude Bosi at Bibendum.





Property features

- Double reception and dining room
- Contemporary eat-in kitchen
- Media room
- Principal bedroom suite with TV snug, walk-in wardrobe and balcony
- Guest bedroom suite
- Three further bedrooms
- Two further bathrooms
- Study
- Private patio and access to a communal garden square
- Royal Borough of Kensington & Chelsea

Approx. 4441 sq ft / 412.6 sq m



Approx. Gross Internal Area = 4441 sq ft / 412.6 sq m

Floor plans are for illustrative purposes only and not to scale. Compliant with RICS code of measuring practice.
Prepared for Domus Stay. Copyright © All Rights Reserved.

Guest & concierge services

Our concierge team are here to help guests settle in, seamlessly. Centre court tickets to Wimbledon, Premier League seats with the best views, Savile Row tailors on standby, or a private chef to cater to individual tastes – we aim to elevate every stay.

From the moment of booking with us, each guest has a single point of contact to finesse the details. Our statement spaces are just the starting point – to ensure everyone feels at home, our rates include:

-
- Weekly housekeeping
 - Flexible check-in/out
 - Luxury linens and Bamford toiletries
 - Legal compliance on all our homes
 - A personal welcome and arrival essentials
 - Unlimited access to guest services and tailored experiences
 - Professional inventory inspection before and after every stay
 - Access to a curated portfolio of sole agency properties





Please get in touch if you have any questions
or require any further information.

hello@domusstay.com

+44 (0)20 8168 8880

The property particulars are a guide not statements. Descriptions, photographs, and plans are for guidance only. The Property is offered "subject to contract and references". No warranties, representations, License or Tenancy is given by Domus Stay. Our full disclaimer together with trading names and our Privacy Policy is shown on our website

© Domus Stay 2025. All rights reserved.

