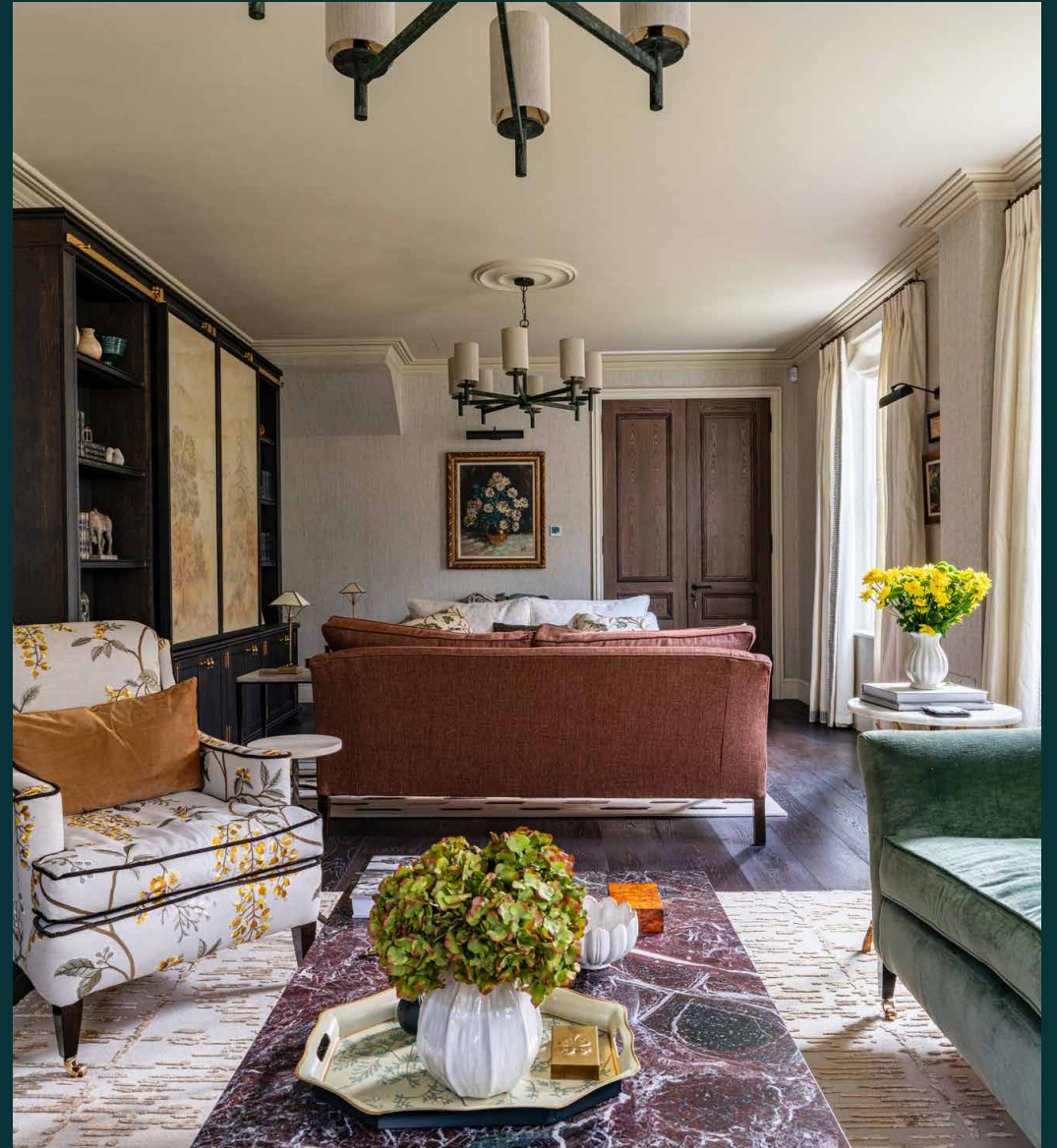


domus
stay.

Cedar Park Road

WIMBLEDON

4 Bedrooms, 3.5 Bathrooms
For 4 guests





Inspired interior design and proximity to the Wimbledon Championships elevate this four-bedroom home to rent.

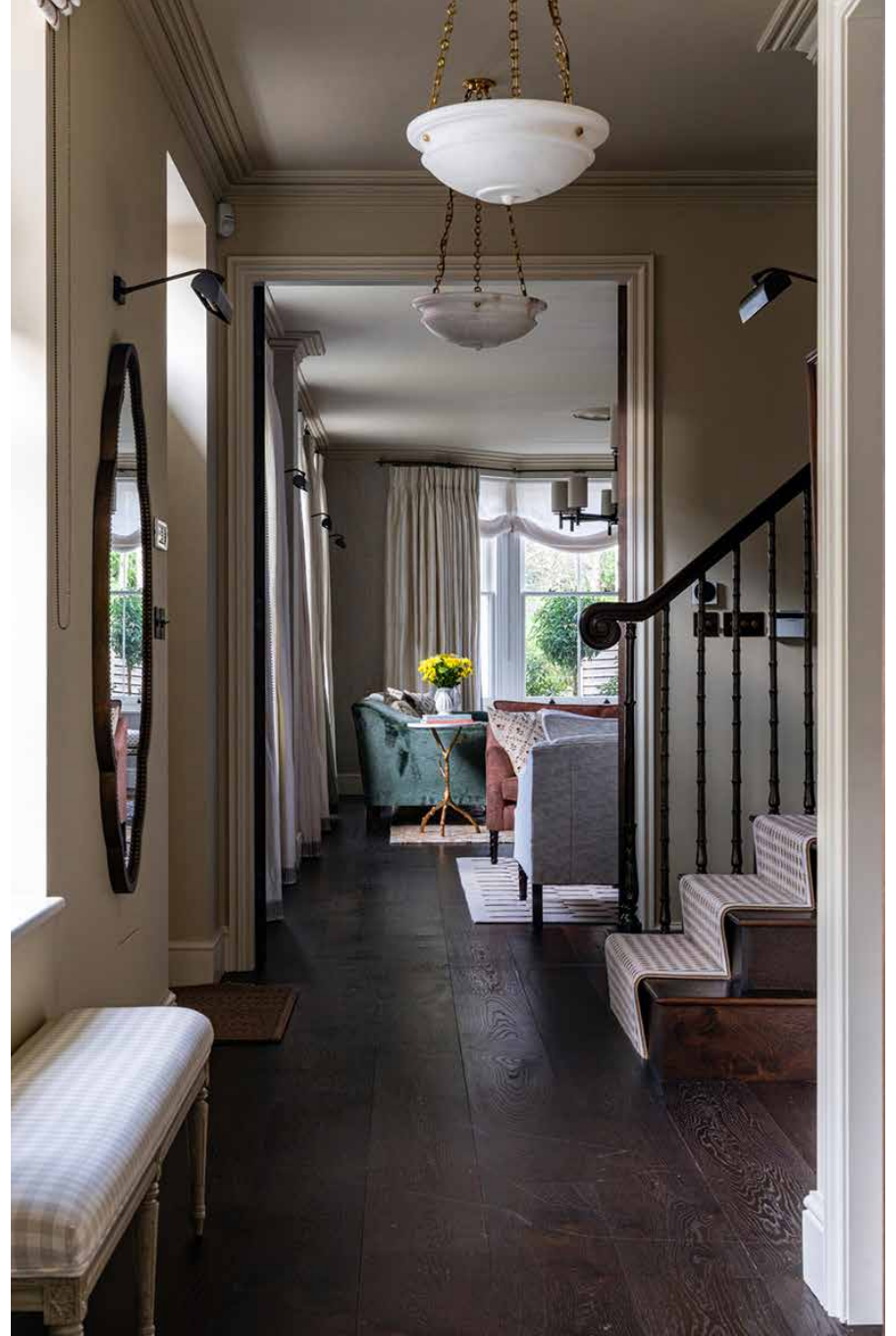
Cedar Park Gardens is a rare find in the city – a period Georgian coach house transformed with care and craft, a stone's throw from Wimbledon Common. Conceived by Joel Azevedo Interiors, design here draws deeply on the natural world. Grasscloth walls, hand-painted murals, embroidered fabrics and leaf motifs run through the house like a continuous thread, bringing the outside in at every turn.

The living spaces

The drawing room occupies the north side of the house, its proportions extended by a bespoke bay window. Two generous sofas, one in deep terracotta linen and another in richly textured m \acute{e} lange, face each other across a rug designed specifically for the home. This side's centrepiece is a bespoke media cabinet, flanked by hand-painted screens by artist Eliza Downes – soft landscapes that conceal the TV when not in use.

A velvet teal sofa occupies the other end, with armchairs arranged around the fireplace for maximum comfort. Antique-style wall sconces, original artwork and a sculptural statement chandelier lend an elegance to evenings at home or hosting guests.







Kitchen & dining

The kitchen is the heart of the home, an uplifting hub that benefits from south-facing light. Cream cabinetry with brass hardware meets a statement navy island; lantern pendants cast a warm glow overhead.

Beyond the kitchen, the extension is the house's most theatrical space. Dine in a glazed garden room with a full lantern roof light – floor-to-ceiling windows offering an easy connection to the garden. A hand-painted mural by Eliza Downes ensures it's an ethereal affair: soak up scenes of flowering branches and drifting blossoms from the bespoke solid oak dining table.



Bedrooms & bathrooms

A T-shaped staircase rises to the first floor past artwork by Collins & Green—a considered transition between the sociable ground floor and the more private world above.

The principal bedroom is a sanctuary of muted tones: natural grasscloth lines the walls, while tongue-and-groove panelling follows the line of a vaulted ceiling. Draw the embroidered curtains to flood in light through French doors, which open to a Juliet balcony with treetop views. The en suite bathroom is hotel standard in every sense—a freestanding teal roll-top tub, marble hex flooring and a walk-in shower.

Three further bedrooms are layered in soft greens, all tranquil and considered spaces to rest. Two bathrooms serve these rooms—a family bathroom with a copper roll-top tub, and a shower room with bold panelling.















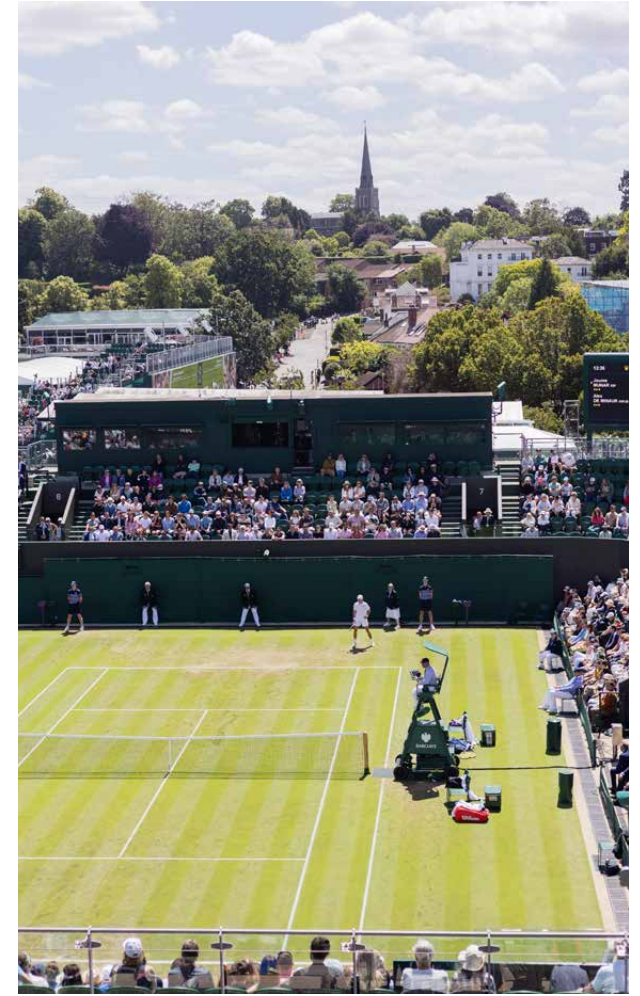


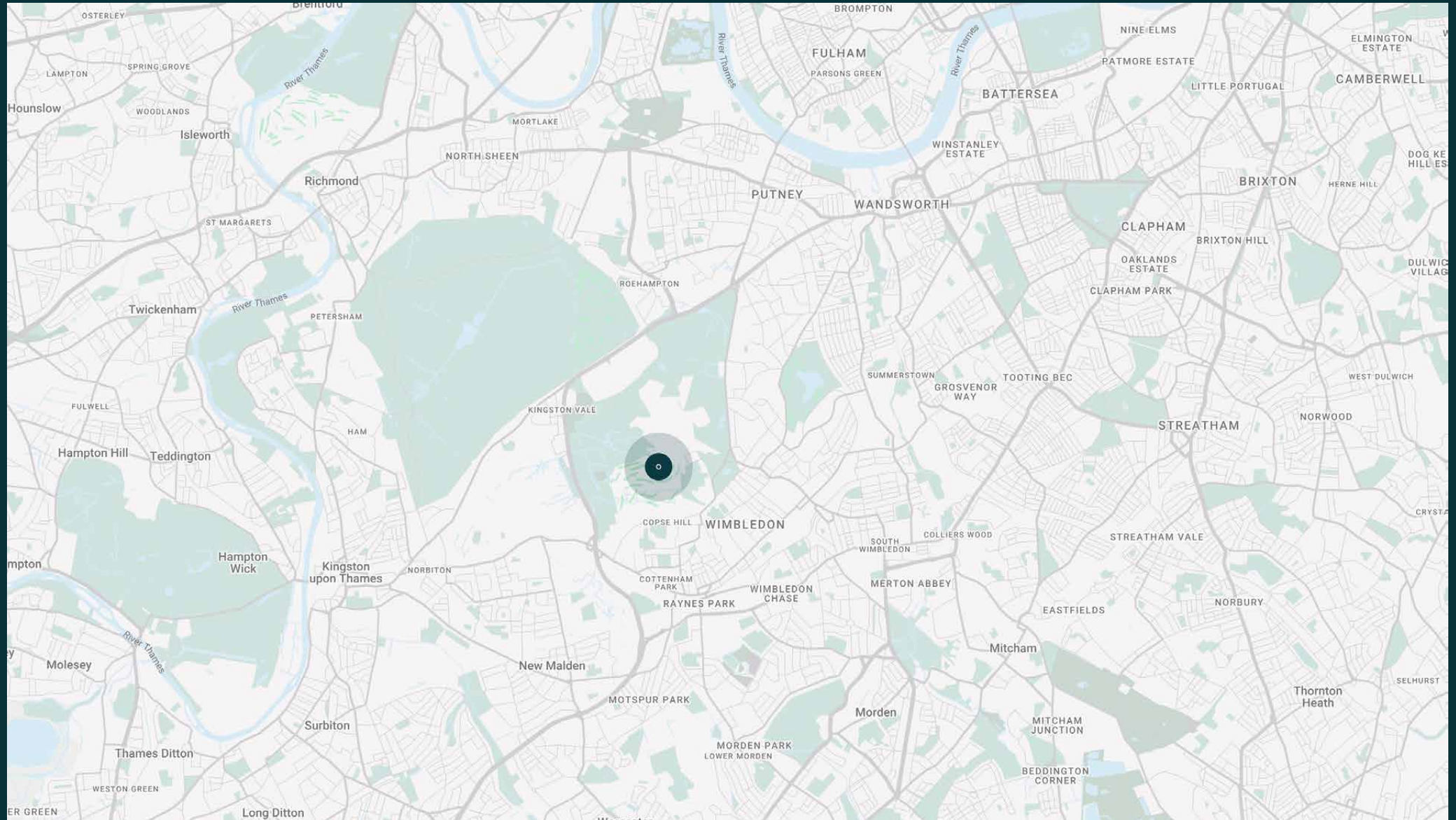
Outdoor space

Accessed directly from the dining extension, the garden is generous, private and set up for summer occasions. The transition from inside to outside is deliberately seamless: a paved terrace lines the immediate area, while a green lawn invites leisurely sun-soaking beyond.

The neighbourhood

Cedar Park Gardens sits within easy reach of Wimbledon Village and its independent shops, cafes and restaurants, with the green expanse of Wimbledon Common just beyond. The All England Lawn Tennis Club is located close by, making this the ideal base for those attending the Championships – or simply for those who appreciate being close to one of London's most storied sporting institutions. Switch it up with a game of golf at neighbouring Royal Wimbledon Golf Club, or take a stroll through the picturesque gardens of Cannizaro Park. Wimbledon station provides swift connections into central London.





Property features

- Period Georgian coach house
- Interior design by Joel Azevedo Interiors
- Spacious double reception room
- Bespoke kitchen with marble island
- Glazed garden dining extension
- Principal bedroom suite with Juliet balcony
- Guest bedroom suite
- Two further bedrooms
- Family bathroom
- Private south-facing garden
- Proximity to Wimbledon Village & Common



Approx. 2,014 sq ft / 187.1 sq m

Approx. Gross Internal Area = 2,014 sq ft / 187.1 sq m

Floor plans are for illustrative purposes only and not to scale. Compliant with RICS code of measuring practice.
Prepared for Domus Stay. Copyright © All Rights Reserved.

Guest & concierge services

Our concierge team are here to help guests settle in, seamlessly. Centre court tickets to Wimbledon, Premier League seats with the best views, Savile Row tailors on standby, or a private chef to cater to individual tastes – we aim to elevate every stay.

From the moment of booking with us, each guest has a single point of contact to finesse the details. Our statement spaces are just the starting point – to ensure everyone feels at home, our rates include:

- Weekly housekeeping
- Flexible check-in/out
- Luxury linens and Bamford toiletries
- Legal compliance on all our homes
- A personal welcome and arrival essentials
- Unlimited access to guest services and tailored experiences
- Professional inventory inspection before and after every stay
- Access to a curated portfolio of sole agency properties



domus stay.

Please get in touch if you have any questions
or require any further information.

hello@domusstay.com

+44 (0)20 8168 8880

The property particulars are a guide not statements. Descriptions, photographs, and plans are for guidance only. The Property is offered "subject to contract and references". No warranties, representations, License or Tenancy is given by Domus Stay. Our full disclaimer together with trading names and our Privacy Policy is shown on our website

© Domus Stay 2025. All rights reserved.

