

domus
stay.

Caroline Close

BAYSWATER

5 Bedrooms, 5 Bathrooms
For 10 guests





The epitome of privacy,
with a live-in driver,
housekeeper and chef at
your disposal.

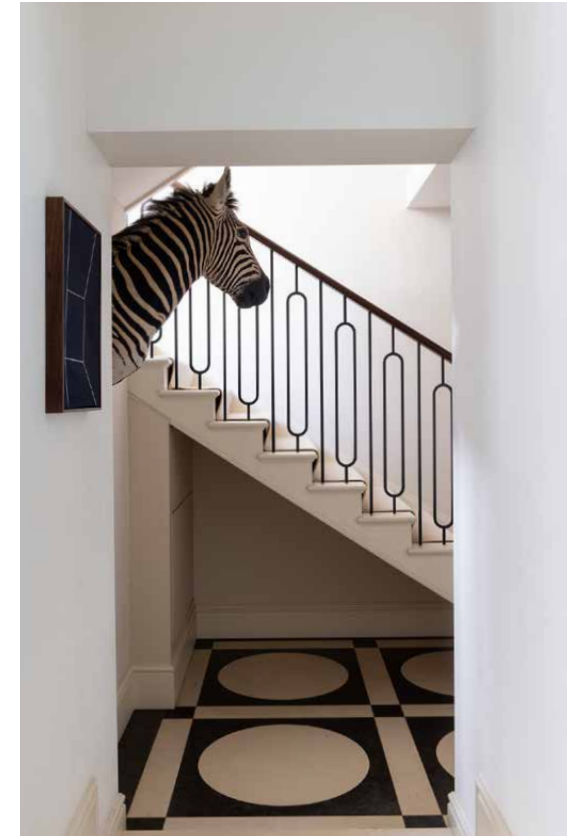
Tucked away on a private, gated close, this imposing three-storey, five-bedroom home promises the highest levels of security and seclusion. From here, you can reach the rambling green spaces of Kensington Gardens and Hyde Park in a matter of seconds, although you'll feel far removed from the action once the iron railings shut behind you. To enable you to fully switch off, staff live on site, ensuring that the everyday runs seamlessly.



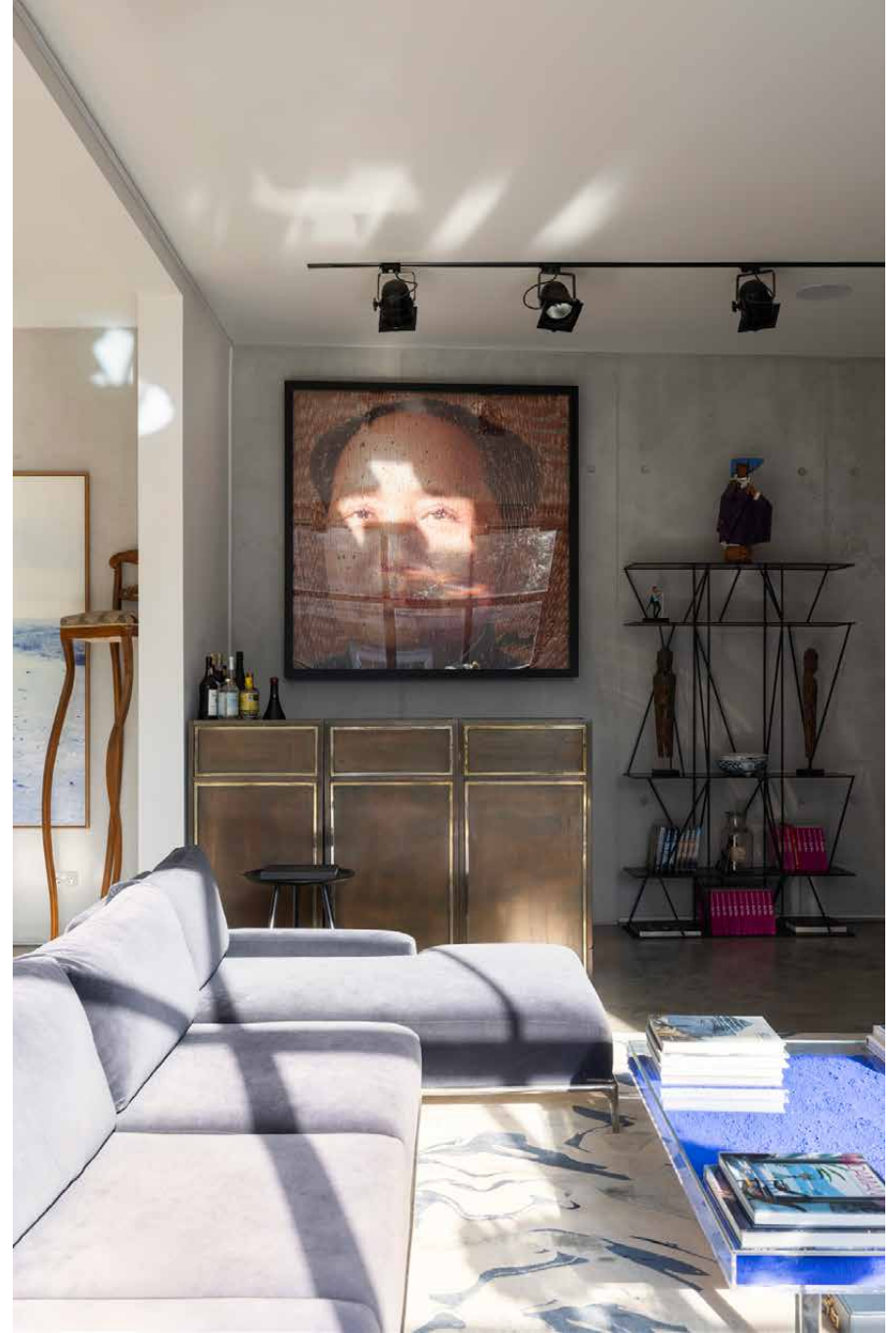
The living spaces

A brilliant sense of light and space flows throughout, with most rooms enjoying double or triple-aspect outlooks that bring a calming, comfortable atmosphere. At the home's core, a standout kitchen, living and dining room makes a striking contemporary addition to the more classic-leaning setting. Wall-to-wall Crittall glazing opens onto the courtyard garden, brightening the voluminous space. The design is bold with an industrial edge – polished concrete floors, a minimalist fireplace and a lateral footprint create a gallery-like backdrop for art, artefacts and sculpture.

To one side of the room, a sofa and armchairs are angled towards a wide chimney breast that doubles as a projector screen for movie nights in front of the fire. Just beyond, five pendant lights cast an ambient glow over a large 10-seater dining table – a convivial setting to enjoy meals cooked by your private chef in the high-spec kitchen. Ample worktop space, Miele appliances and a wine chiller make this a culinary space that's fit for entertaining a crowd.











A separate triple-aspect reception room also opens onto the garden. A cosy space to retreat to in the evenings, there's a fire with a fender seat surround, and a range of deep armchairs and a sofa to kick back in. In the corner, an antique desk is ideal for working from home. Off the other side of the wide hallway, double doors open to a formal dining room-cum-library, painted in a deep blue. Integrated bookshelves, a window seat and Versailles parquet flooring bring a sense of occasion to the space.

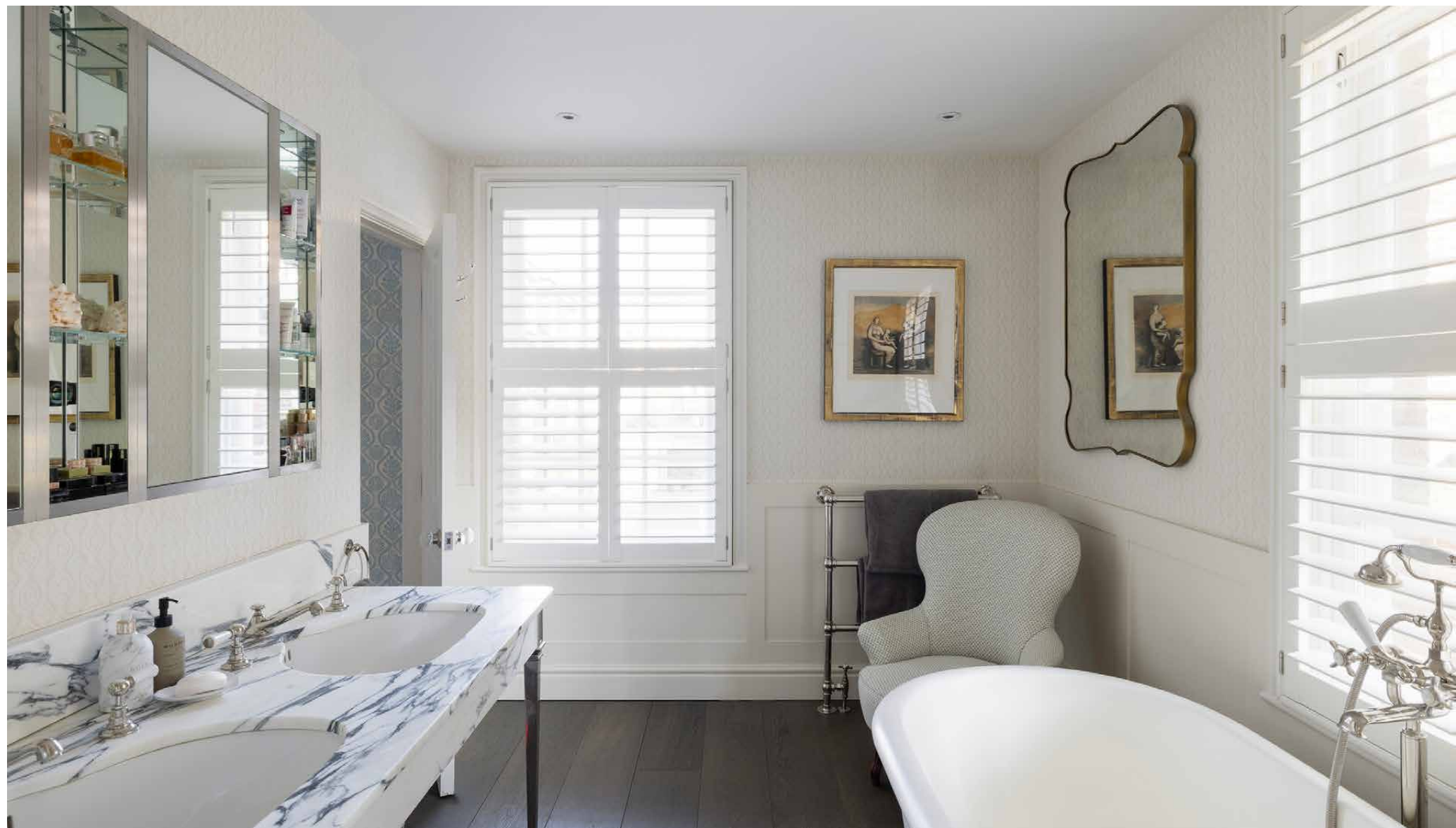




Bedrooms & bathrooms

Five bedroom suites are arranged across the home's two upper floors. The principal is calming and well-appointed. Green floral wallpaper adds a sumptuous feel, while a walk-in wardrobe sees to the practicalities. The en suite is designed for unwinding, with a large roll-top bath and double marble sinks. Four further bedrooms all come with en suite bathrooms and are set to soothe with hushed tones and soft carpets.







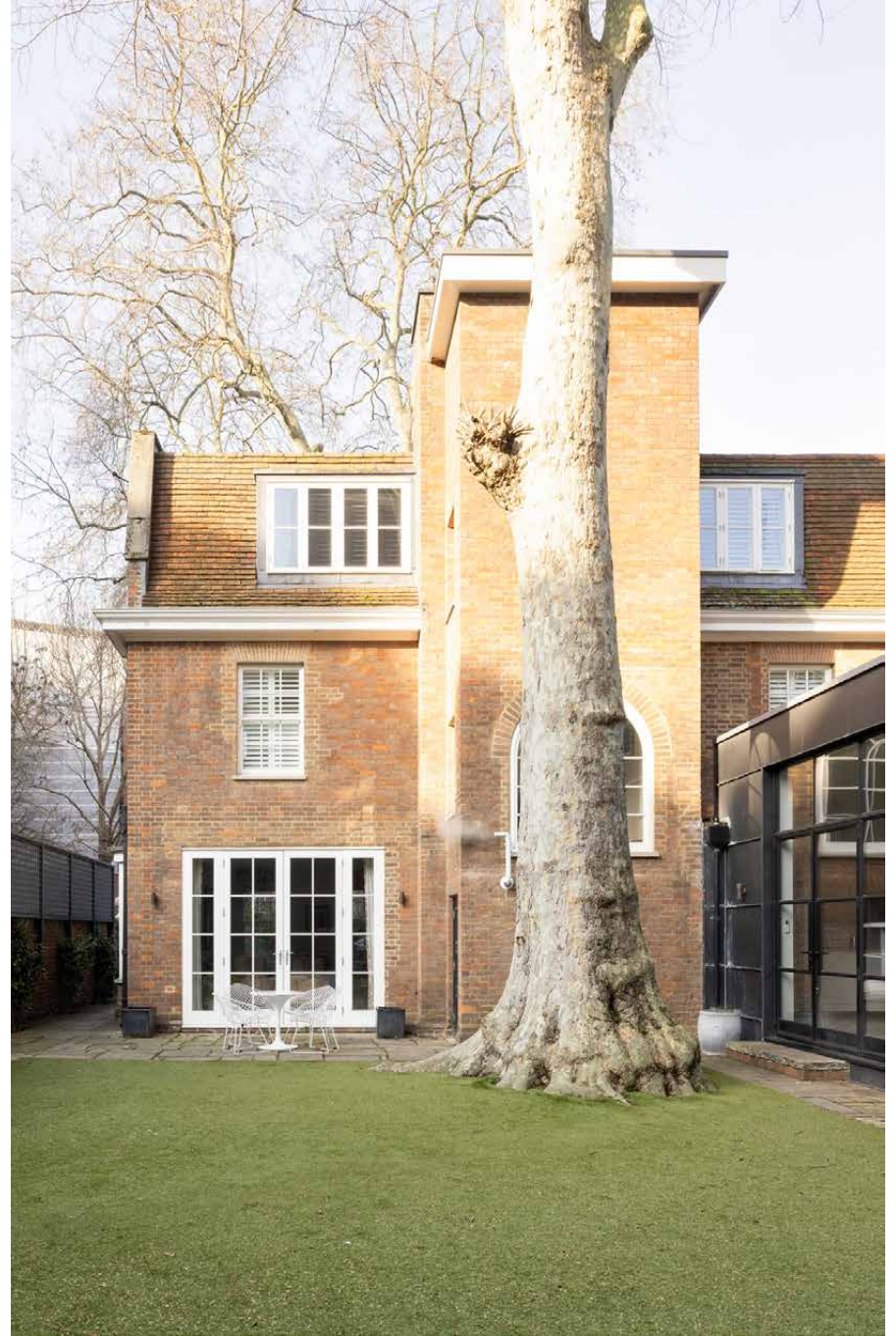






Outdoor space

When the weather allows, step outside to the garden; the house wraps around it like a horseshoe, adding an extra layer of privacy. A towering plane tree provides welcome shade in the sunnier months.

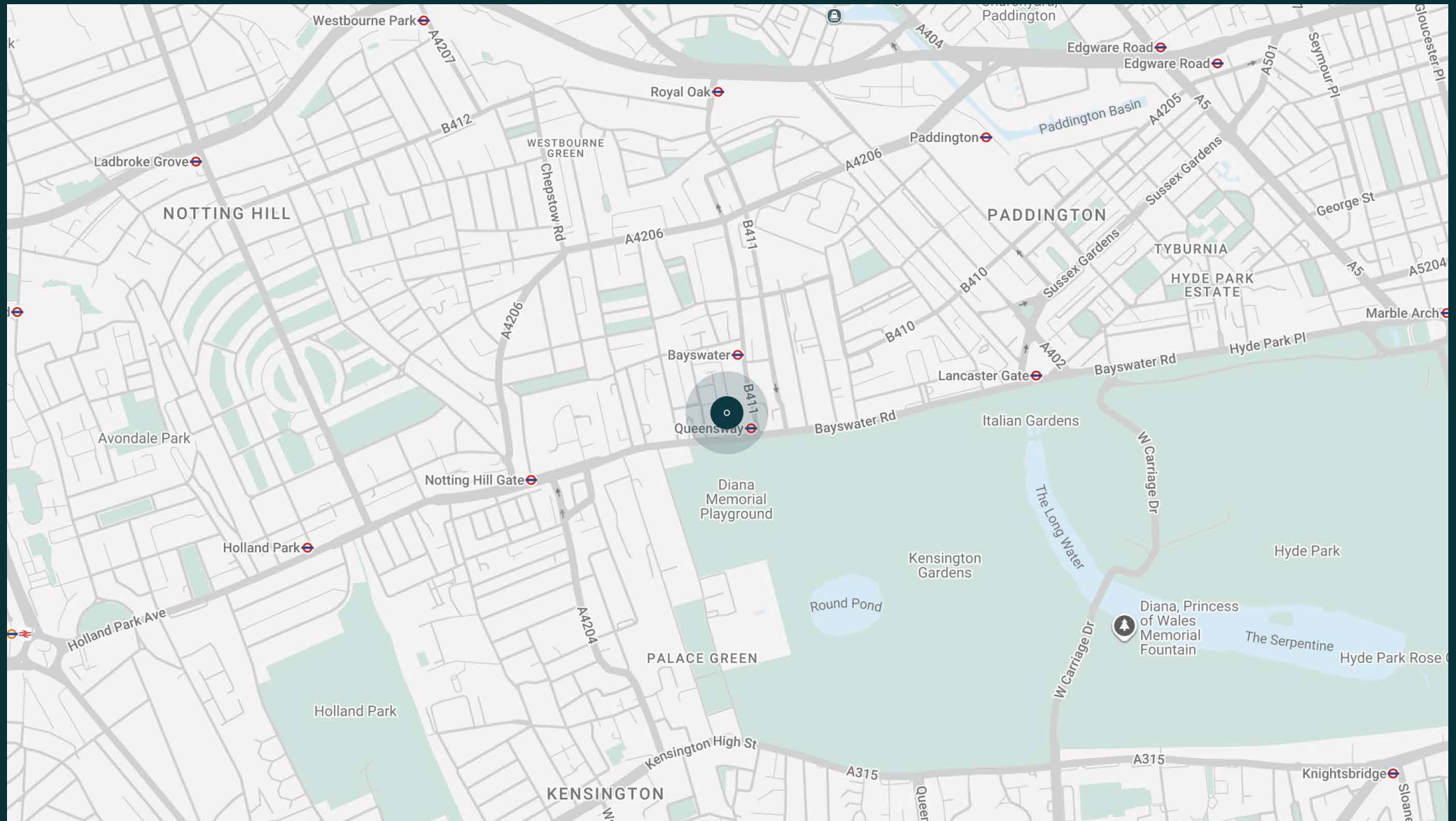


The neighbourhood

With so much green space on the doorstep, take a breather from the relentless pace of city life here.

Stroll towards the Albert Memorial in Kensington Gardens, wander around the lake in Hyde Park or – if you're feeling brave – dive into the Serpentine Lido. Recharged and ready to go, the best of Bayswater and Notting Hill is within walking distance. Ease into the day with a flat white at Guillam Coffee House, a workout at Heartcore, or brunch at The Park. Then continue along Portobello Road for a spot of vintage shopping. Come evening, head to Sol's – a favourite neighbourhood wine bar and deli.

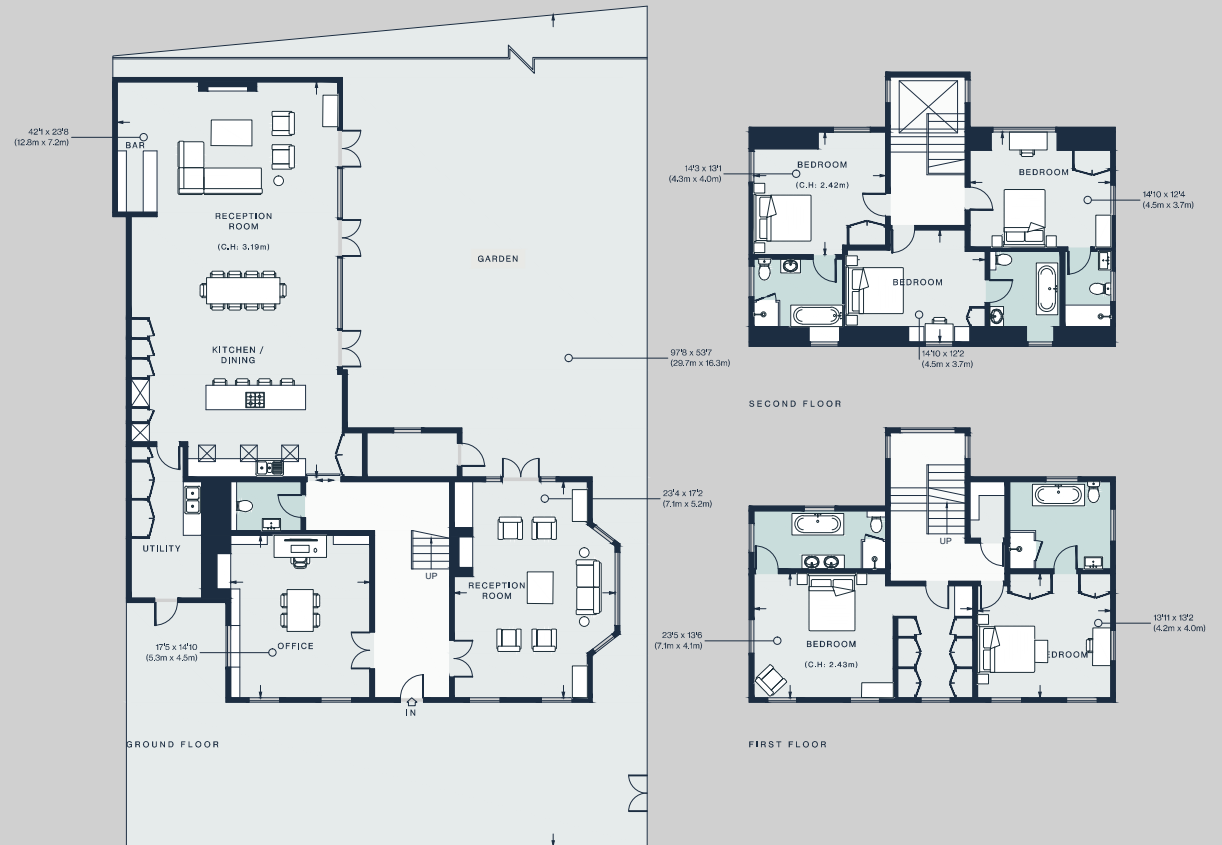




Property features

- Double reception room
- Contemporary kitchen
- Principal bedroom suite with dressing room
- Three further bedroom suites
- Guest bedroom
- Patio garden
- Roof terrace and additional living room
- Cloakroom
- Garage
- Study
- Snug

Approx. 3,798 sq ft / 353 sq m



Approx. Gross Internal Area = 3,752 sq ft / 348.6 sq m

External Storage = 46 sq ft / 4.3 sq m

Total = 3,798 sq ft / 352.9 sq m

Floor plans are for illustrative purposes only and not to scale. Compliant with RICS code of measuring practice.

Guest & concierge services

Our concierge team are here to help guests settle in, seamlessly. Centre court tickets to Wimbledon, Premier League seats with the best views, Savile Row tailors on standby, or a private chef to cater to individual tastes – we aim to elevate every stay.

From the moment of booking with us, each guest has a single point of contact to finesse the details. Our statement spaces are just the starting point – to ensure everyone feels at home, our rates include:

-
- Weekly housekeeping
 - Flexible check-in/out
 - Luxury linens and Bamford toiletries
 - Legal compliance on all our homes
 - A personal welcome and arrival essentials
 - Unlimited access to guest services and tailored experiences
 - Professional inventory inspection before and after every stay
 - Access to a curated portfolio of sole agency properties



domus stay.

Please get in touch if you have any questions
or require any further information.

hello@domusstay.com

+44 (0)20 8168 8880

The property particulars are a guide not statements. Descriptions, photographs, and plans are for guidance only. The Property is offered "subject to contract and references". No warranties, representations, License or Tenancy is given by Domus Stay. Our full disclaimer together with trading names and our Privacy Policy is shown on our website

© Domus Stay 2025. All rights reserved.

