

domus
stay.

Cannon Lane

HAMPSTEAD

5 Bedrooms, 5 Bathrooms
For 10 guests





Soaring proportions, simplicity in design. This impressive Hampstead house to rent is a masterpiece of elegant luxury.

Behind an understated brick façade on historic Cannon Lane, this newly built Hampstead home reveals itself as a study in calm and restraint. Designed by renowned architect Claudio Silvestrin, the house sits quietly within the neighbourhood's conservation zone, its walled exterior ensuring rare privacy and seclusion. Inside, generous proportions unfold through a language of clean lines and gentle curves, softened by warm, natural materials. At its heart, a sculptural spiral staircase provides a striking yet serene focal point, anchoring the home's minimalist aesthetic.

The living spaces

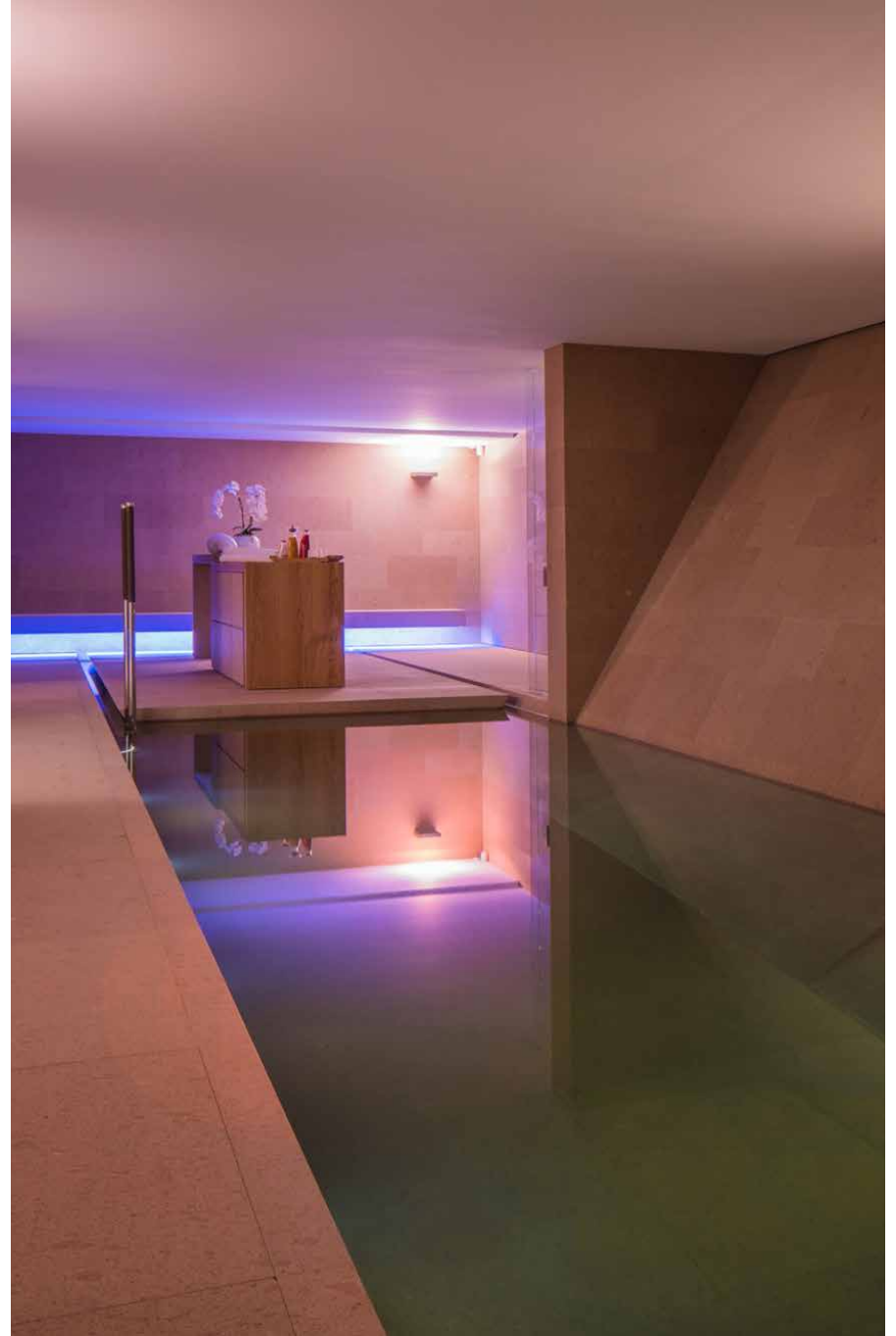
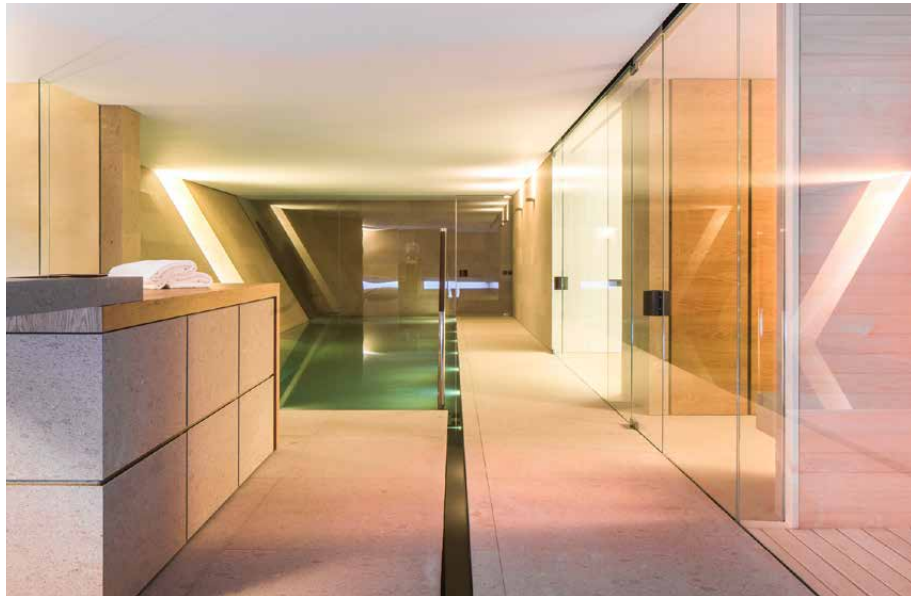
A formal reception room occupies the ground floor, defined by yellow-ochre porphyry sourced from the Italian Dolomites, which rises seamlessly from floor to wall. The stone's richness is offset by simple, neutral furnishings, allowing light and texture to take precedence. Floor-to-ceiling windows line the southern elevation, opening onto glass-fronted balconies and framing views across the garden. Art adds depth, from a Conrad Shawcross Paradigm sculpture to carefully chosen abstract works.

Entertaining continues on the garden level, where a private cinema room features deep, sofa-style seating and atmospheric LED lighting. Below, a dedicated wellness floor offers a swimming pool, sauna, steam room and gym. Natural light filters down into the pool area, lending it a hushed, spa-like ambiance.







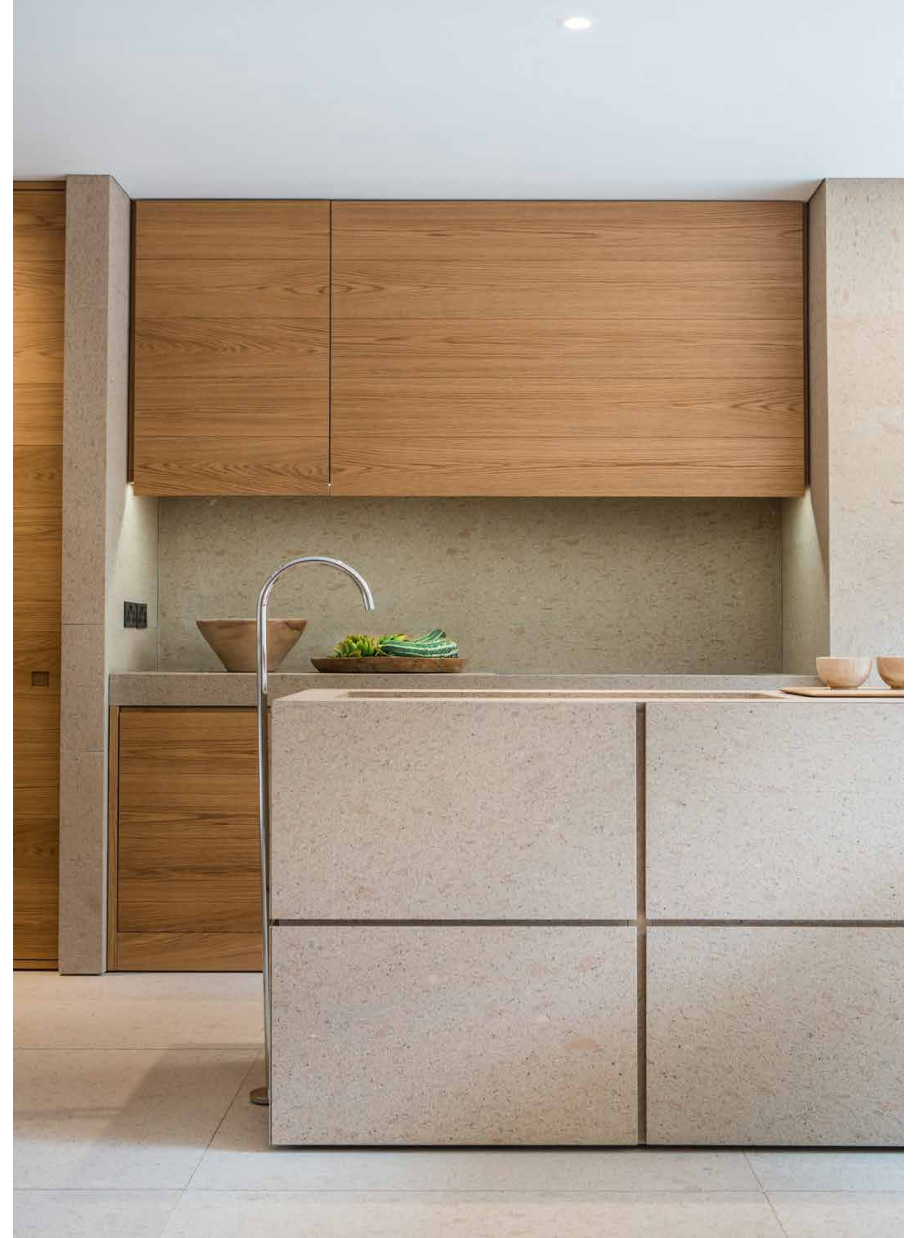


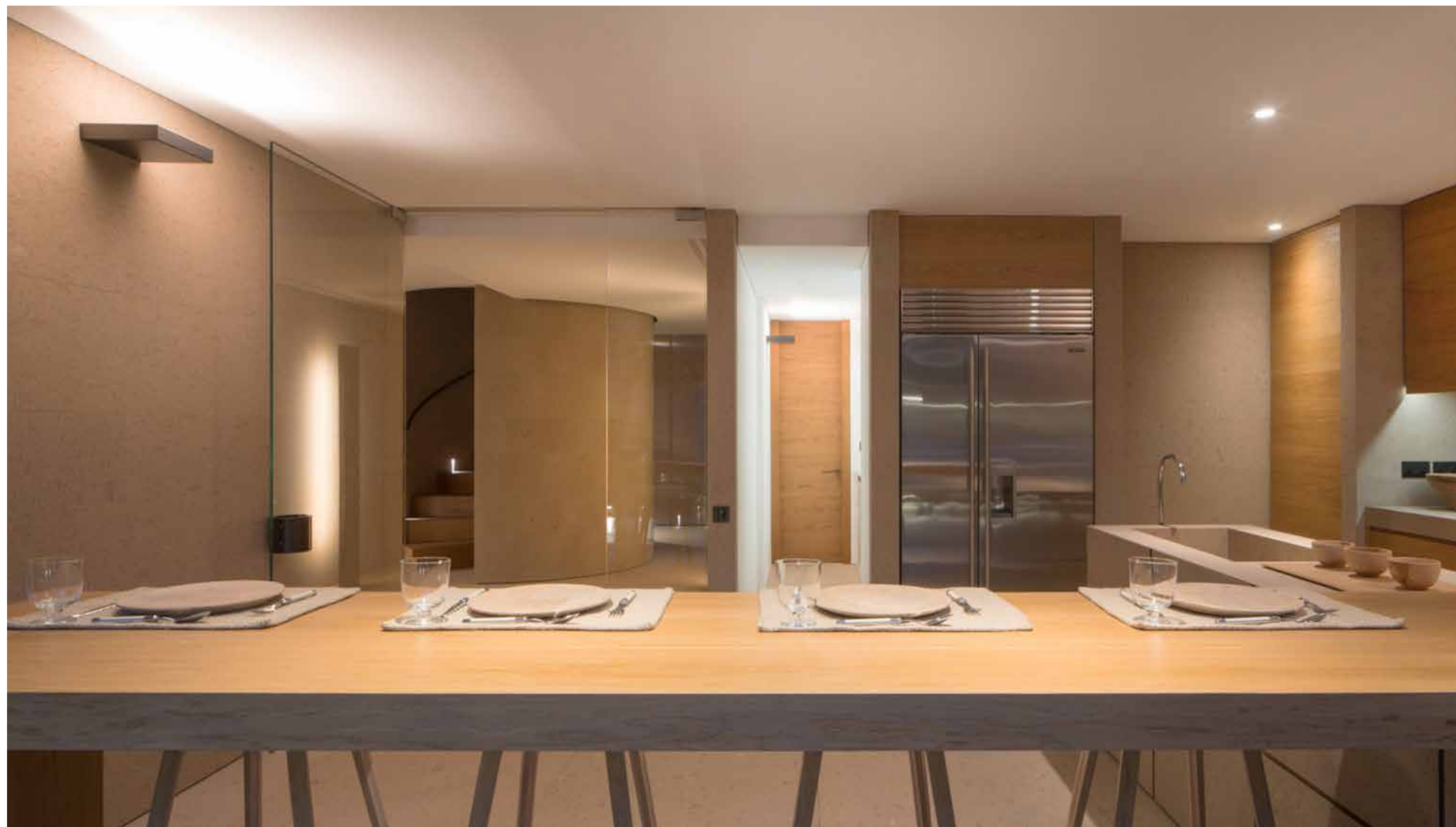


Kitchen & dining

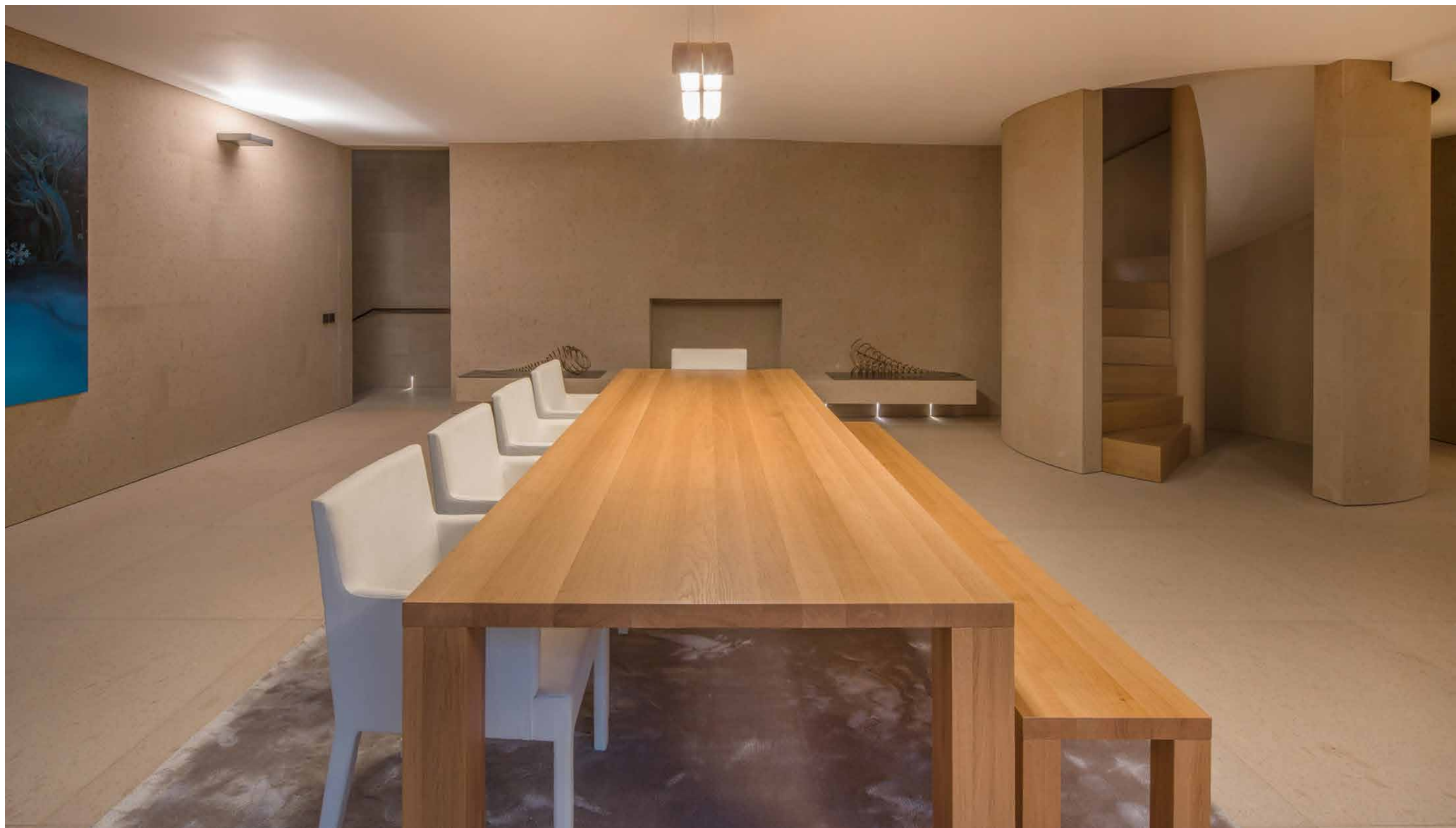
The striking Italian stone extends into the kitchen, where wall-to-wall sliding doors draw in daylight and open directly onto the garden. Wooden cabinetry complements a stone island, while a breakfast bar provides an informal spot for coffee or lunch with friends. Concealed ovens and a double fridge-freezer ensure the space remains streamlined and set for hosting.

A formal dining room completes the level. Here, a long wooden table is illuminated from above by a undulating LED chandelier, while a further expanse of glazing looks out onto a courtyard and the landscaped garden beyond.













Bedrooms & bathrooms

The upper two floors are devoted to relaxation. The standout principal suite is bright and spacious, with integrated storage along one wall and full-height glazing along the other. A private balcony and terrace overlook the garden below. Beyond an opaque partition, the en-suite bathroom adopts a spa-like mood: a large egg-shaped stone bath takes centre stage, accompanied by sculptural basins set atop curved cabinetry and a generous walk-in rainfall shower designed for two.

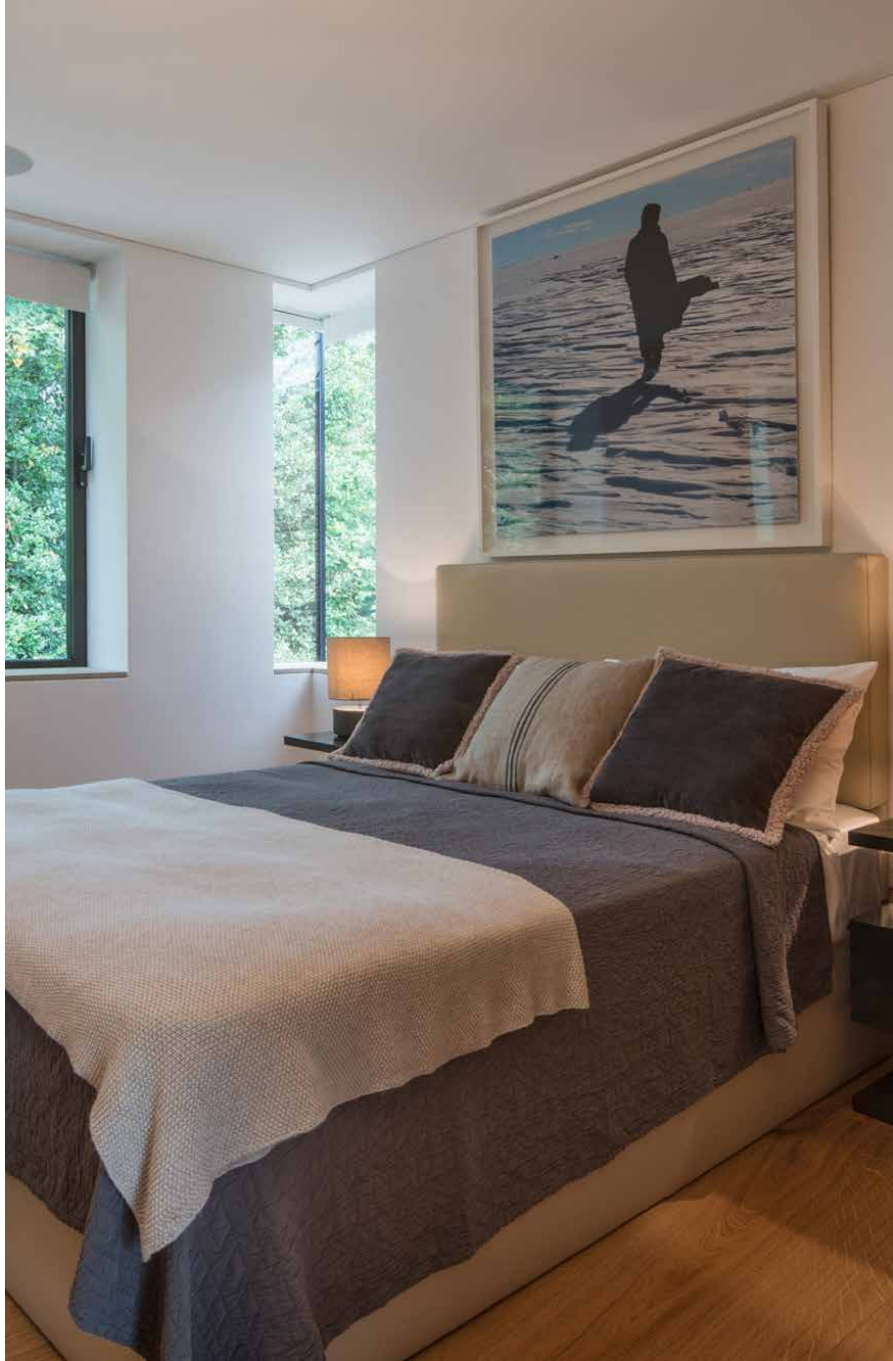
Quietly impressive design continues into a guest suite and two additional bedrooms on the same floor, which share a family shower room. Gallery-white walls and neutral textiles maintain a calm, contemporary feel. The top floor is home to a final bedroom suite, which opens onto a private balcony with long-reaching views towards the Shard and the London skyline beyond.

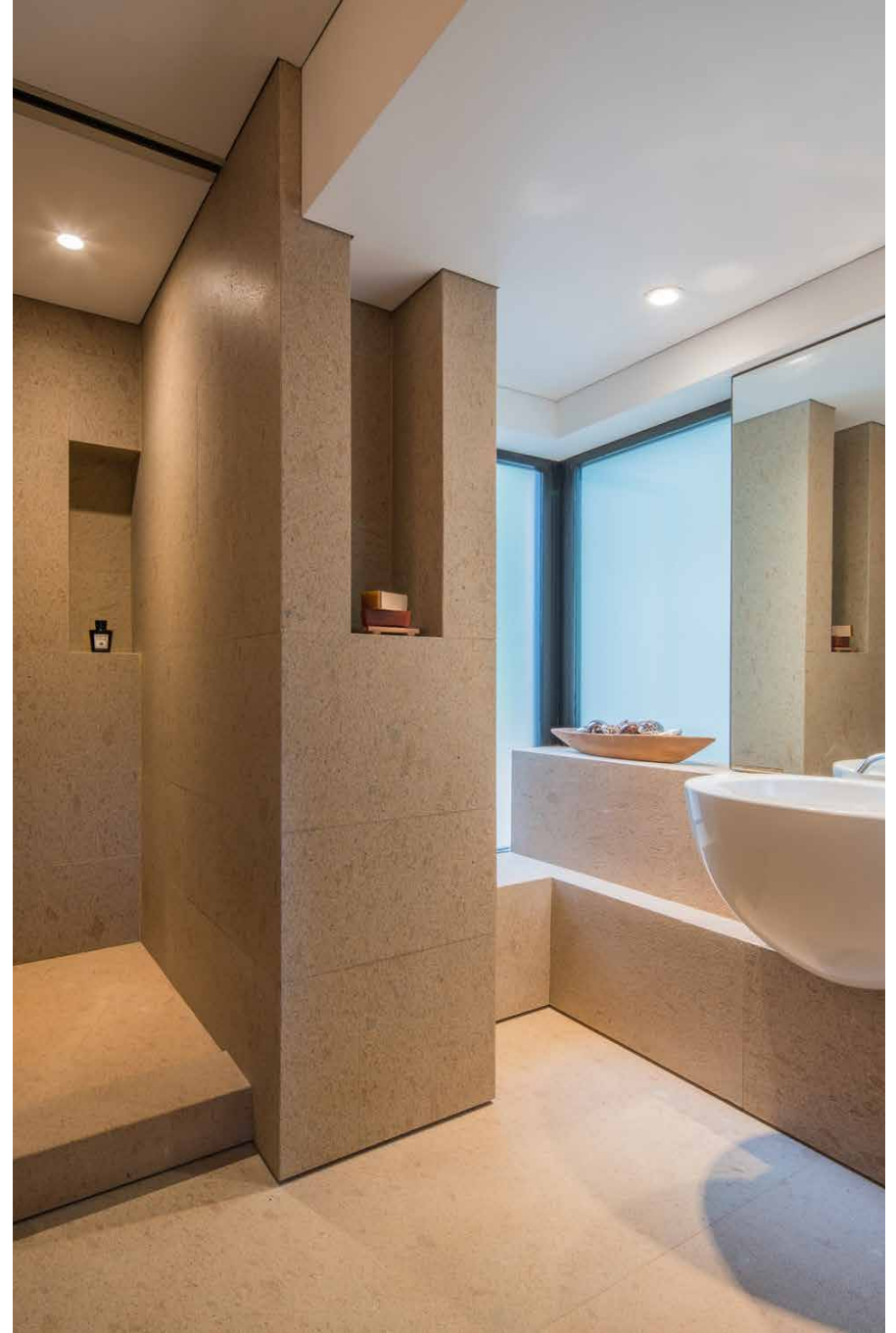
















The design

Claudio Silvestrin's work is defined by quiet elegance: contemporary yet enduring, restrained yet deeply atmospheric. With an internationally acclaimed portfolio that includes projects for Giorgio Armani and Calvin Klein, Cannon Lane is testament to his reputation for creating spaces that feel both architectural and profoundly human.

Outdoor space

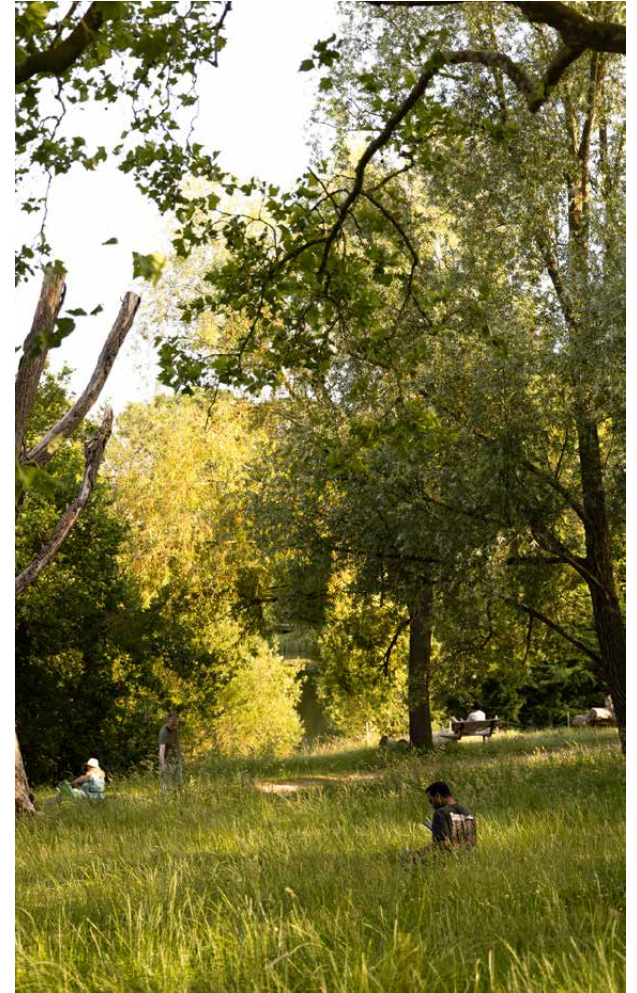
A sense of privacy continues outdoors, where a tiered garden unfolds through winding staircases and subtle uplighting. Planting has been carefully considered by Chris Beardshaw, the RHS Chelsea Flower Show gold medal-winning designer, ensuring year-round interest and structure. Glass balustrades line the south-facing balconies, while above it all, a green roof crowns the house, offering sweeping views across central London.

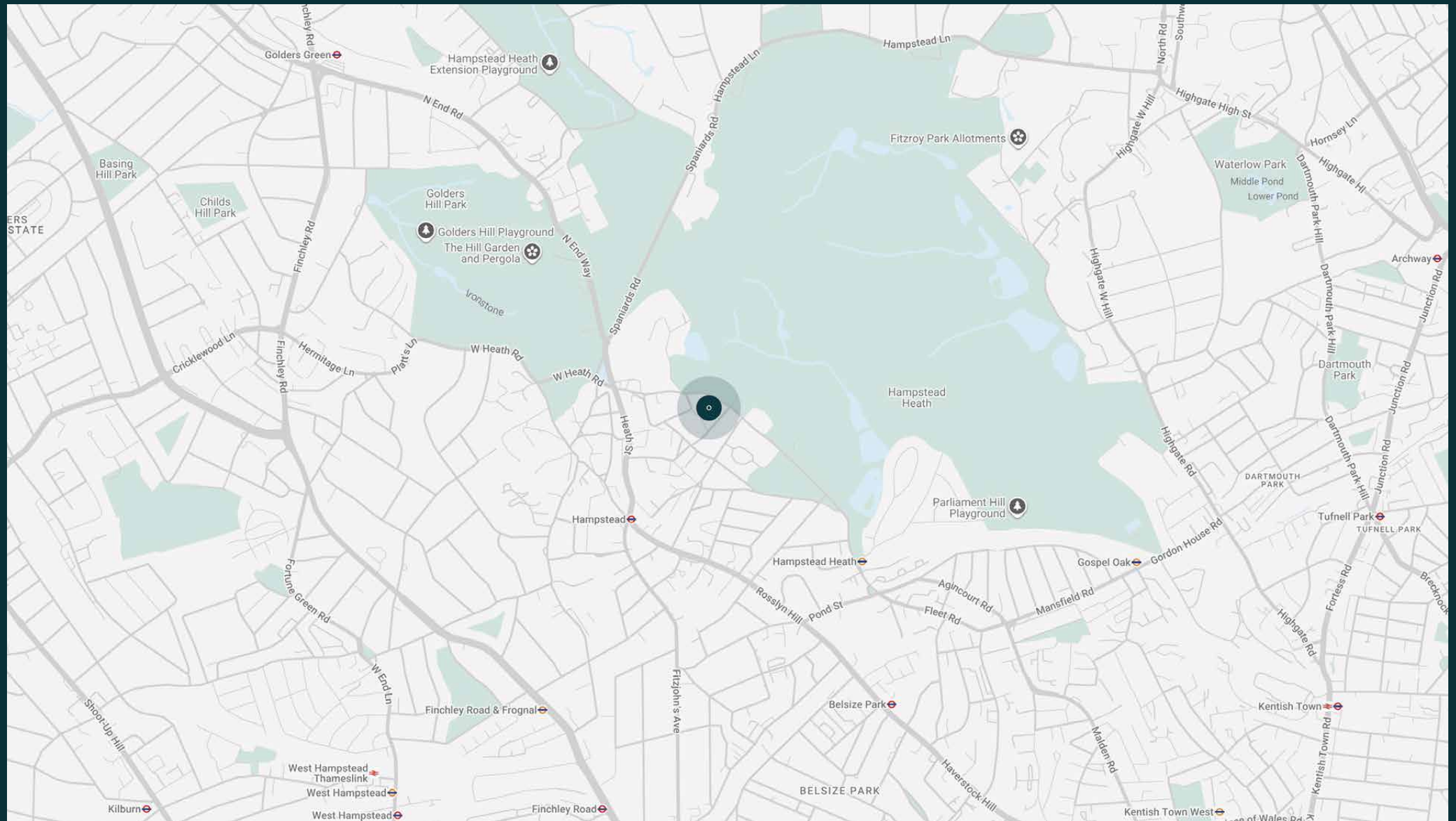


The neighbourhood

Hampstead is all about its Heath. Some 800 acres of wild green space, it's a place to press pause close to the heart of the city. Ramble up to Parliament Hill viewpoint for an unbeatable vantage point over London or brave a dip in one of the heath's outdoor bathing ponds. Reward your efforts with baked goods from Ginger & White followed by a wander through the cobbled streets of Hampstead Village and a drink at the Holly Bush. The neighbourhood certainly isn't short of excellent pubs – right on the doorstep you'll also find The Duke of Hamilton, home to the Hampstead Jazz Club.

As you'd expect from such a storied neighbourhood, historic landmarks are also plentiful. Explore Fenton House and Garden, Keats House and Burgh House, or keep an eye out for the more than 50 blue and brown plaques that commemorate former famous residents. When you want to explore the rest of the city, hop on the Northern line or the Overground.





Property features

- Architecture by Claudio Silvestrin
- Contemporary kitchen and dining room
- Two expansive reception rooms
- Principal bedroom suite with dressing room and private terraces
- Two guest bedroom suites
- Two further bedrooms with shared balcony
- Family bathroom
- Indoor swimming pool and gym
- Steam room, sauna and spa
- Cinema room
- Study
- Lift
- Staff quarters
- Utility room
- Cloakroom
- Garage and car lift
- Private garden with terraces
- London Borough of Camden

Approx. 737 sq m / 7940 sq ft



Guest & concierge services

Our concierge team are here to help guests settle in, seamlessly. Centre court tickets to Wimbledon, Premier League seats with the best views, Savile Row tailors on standby, or a private chef to cater to individual tastes – we aim to elevate every stay.

From the moment of booking with us, each guest has a single point of contact to finesse the details. Our statement spaces are just the starting point – to ensure everyone feels at home, our rates include:

-
- Weekly housekeeping
 - Flexible check-in/out
 - Luxury linens and Bamford toiletries
 - Legal compliance on all our homes
 - A personal welcome and arrival essentials
 - Unlimited access to guest services and tailored experiences
 - Professional inventory inspection before and after every stay
 - Access to a curated portfolio of sole agency properties



domus stay.

Please get in touch if you have any questions
or require any further information.

hello@domusstay.com

+44 (0)20 8168 8880

The property particulars are a guide not statements. Descriptions, photographs, and plans are for guidance only. The Property is offered "subject to contract and references". No warranties, representations, License or Tenancy is given by Domus Stay. Our full disclaimer together with trading names and our Privacy Policy is shown on our website

© Domus Stay 2025. All rights reserved.

