

domus  
stay.

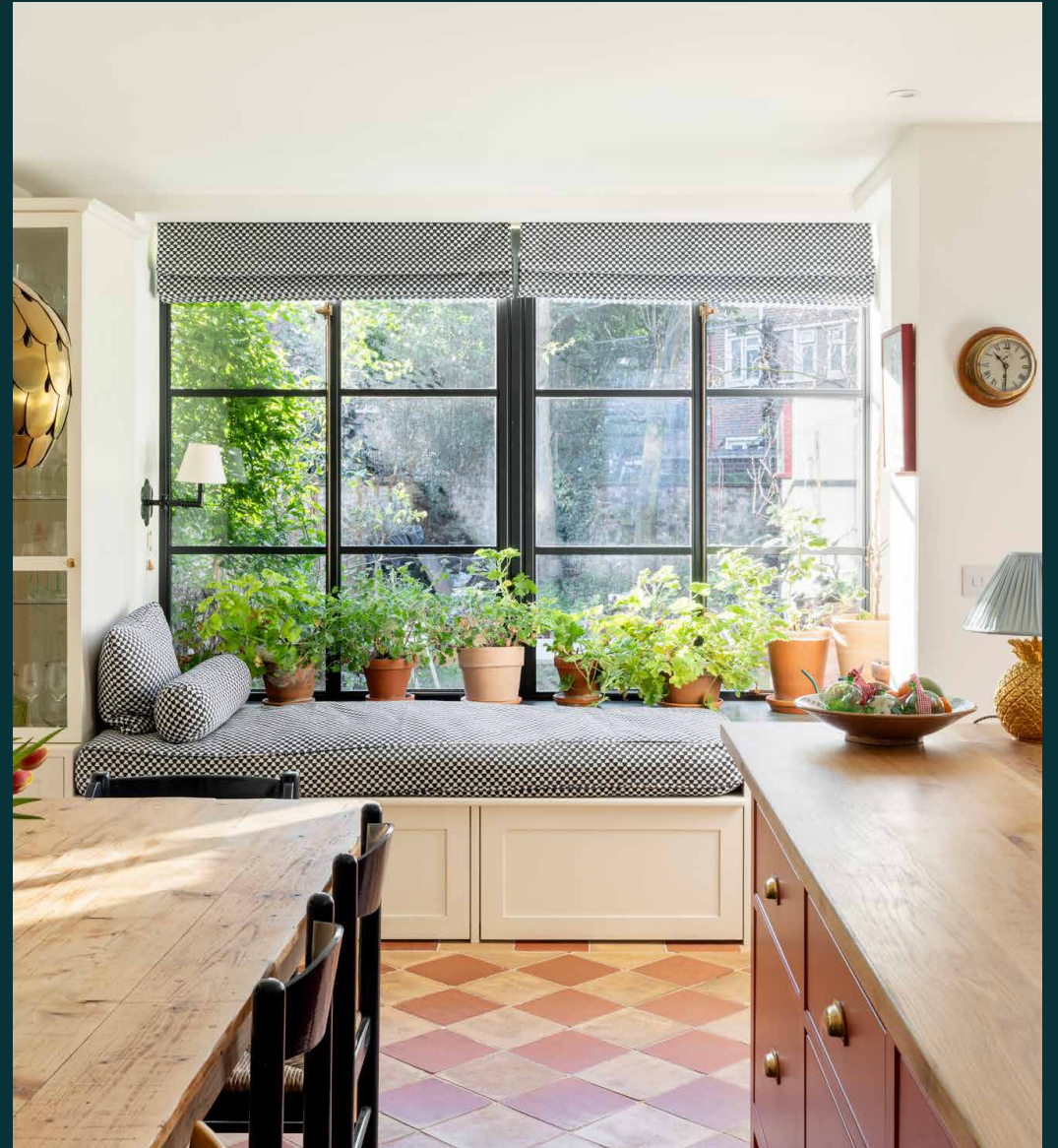
---

# Bryantwood Road

ISLINGTON

4 Bedrooms, 4 Bathrooms  
For 7 guests

---





Maximalist character meets country-style charm. This home in Islington brings joyful design to a heritage backdrop.

A Victorian home reimaged by Mason Gillibrand Architects, Bryantwood Road finds its harmony between calm and creativity. Across three floors, original features are restored and celebrated, with new layers of colour and texture bringing social settings to life. A Crittall-framed kitchen to the rear connects the private garden: split between patio, lawn and planting for year-round days outdoors.

Designed by Mason Gillibrand Architects.

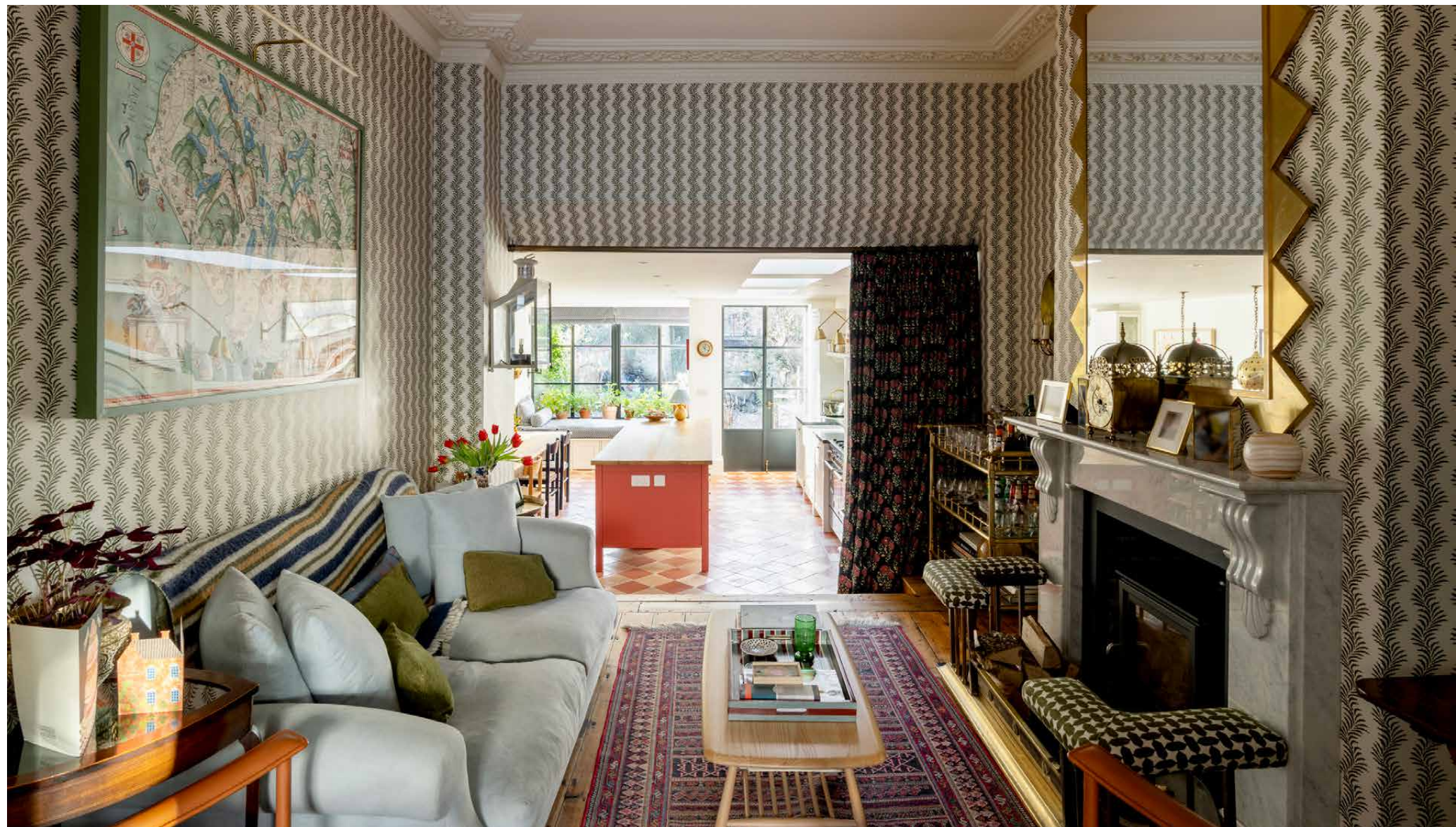


# The living spaces

Convivial design might take centre stage, but sustainability is part of the story here too. Soane Britain furnishings style the home from top to toe: wallpaper, curtains and lighting throughout are British manufactured and made to endure. Patterned walls and eclectic prints provide the backdrop; reclaimed and restored antique pieces are dotted throughout. Textures are all tactile but inviting, ensuring a cosy quality that follows room to room.











Living spaces flow easily from front to back: sliding doors allow rooms to roll together as one or close off as needed. The front reception centres around a restored Victorian fireplace; built-in shelving lines the walls to form a library-like feel. Pick up a paperback and sink into the sofa, or step through to the second sitting room for a more intimate setting. Light up the log burner, craft a cocktail from the drinks trolley and hit play on the TV for movie nights at home.









## Kitchen & dining

Echoes of the countryside envelop the kitchen and dining room, a setting to gather – around the farmhouse-style table or garden-view window seat. Character and practicality come in equal measure here, with underfloor heated reclaimed floors, cumbrian slate worksurfaces and a Bertazzoni range cooker. Akin to the rest of the home, natural light is in plentiful supply. A skylight overhead warms brushed brass details, while Crittall-style glazing offers a sightline out to the private garden.



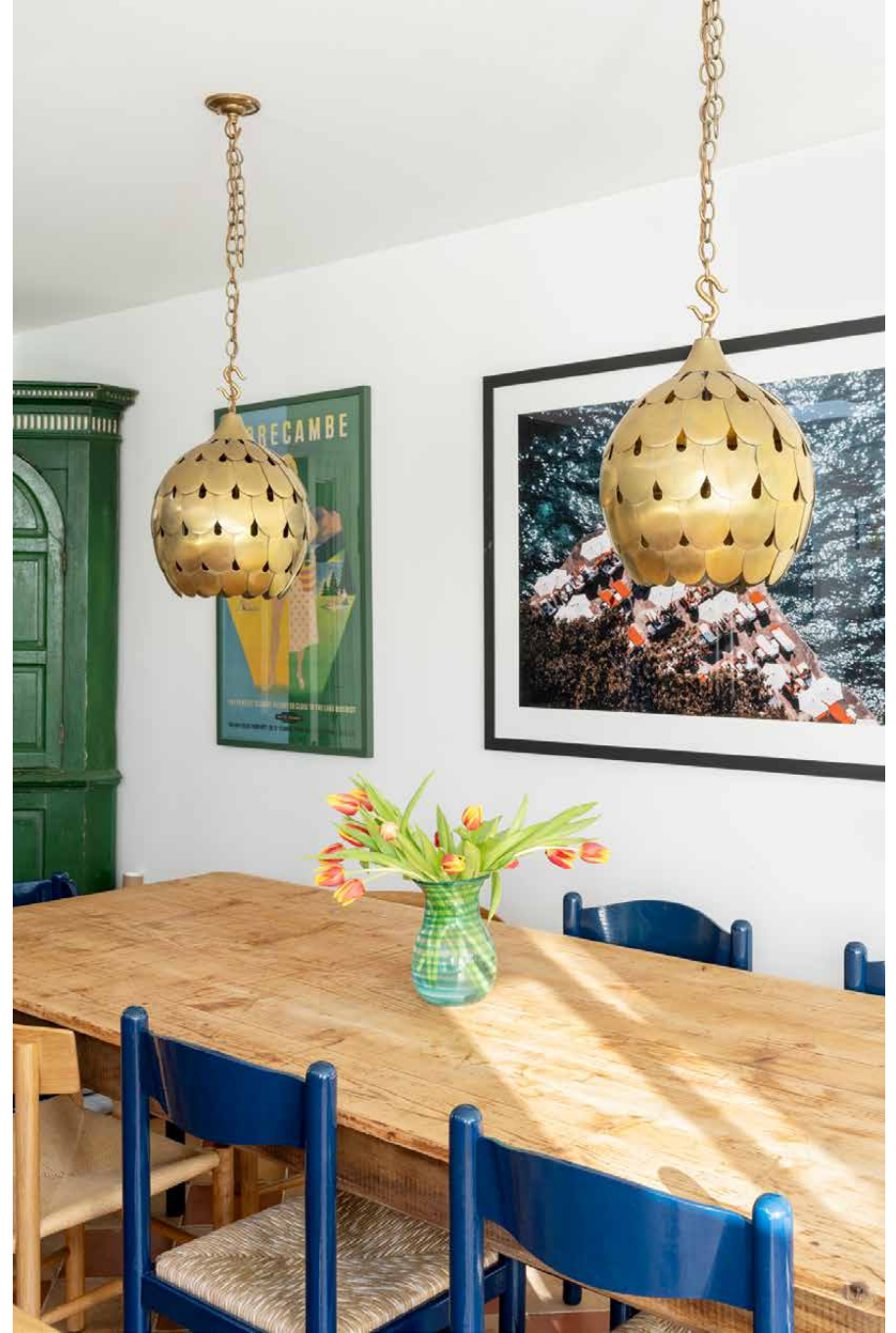














## Bedrooms & bathrooms

Bedrooms are calm but expressive, each with its own palette and personality. The principal bedroom is papered in soft pink, with a discreet door that conceals its en suite. Garden views are best enjoyed from the bathtub; a rainfall shower is set up to refresh.

Three further bedrooms are equally considered – adorned with antiques, handcrafted pieces and original artwork. Two bathrooms – a pale pink shower room and deep green family bathroom – serve these rooms.



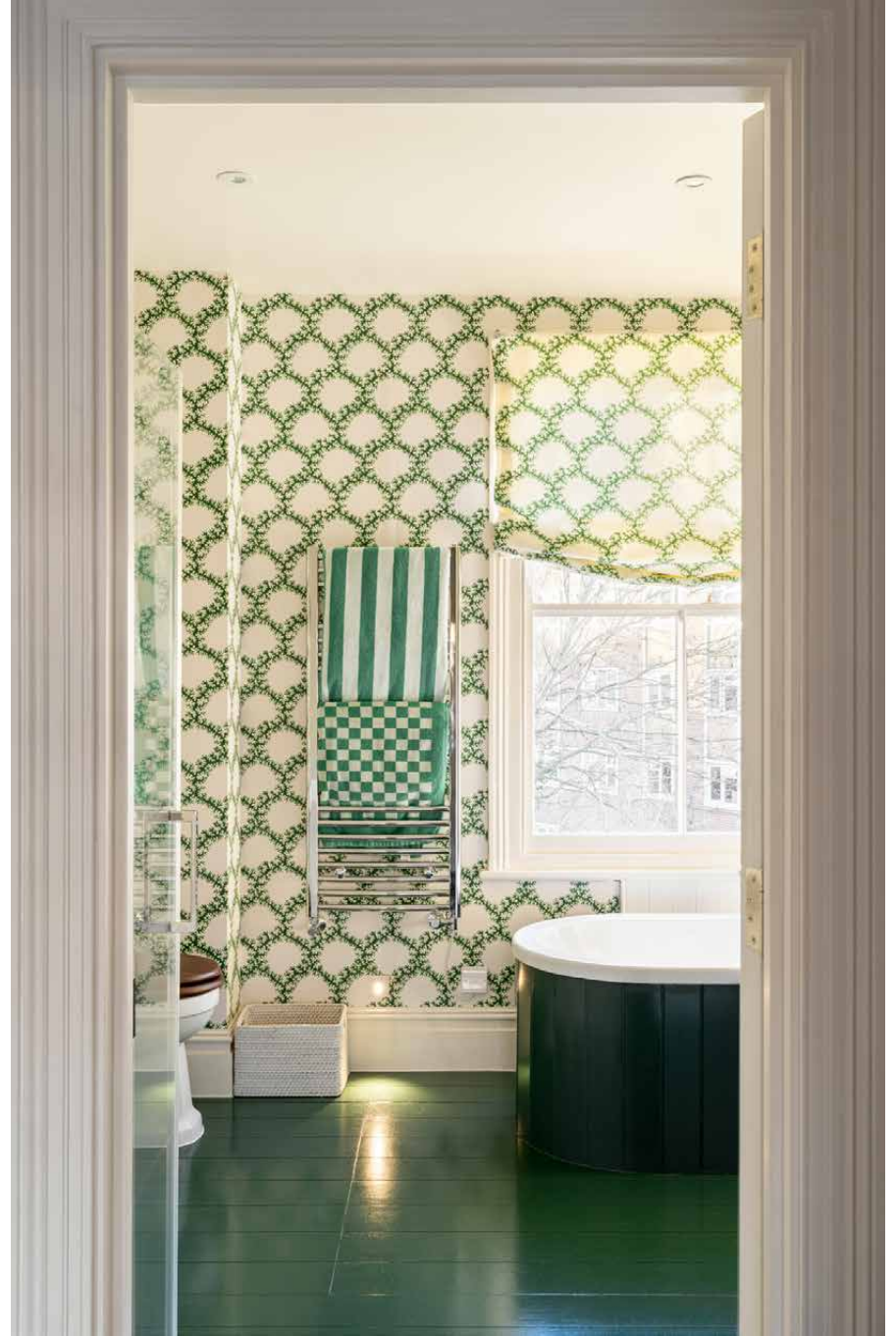




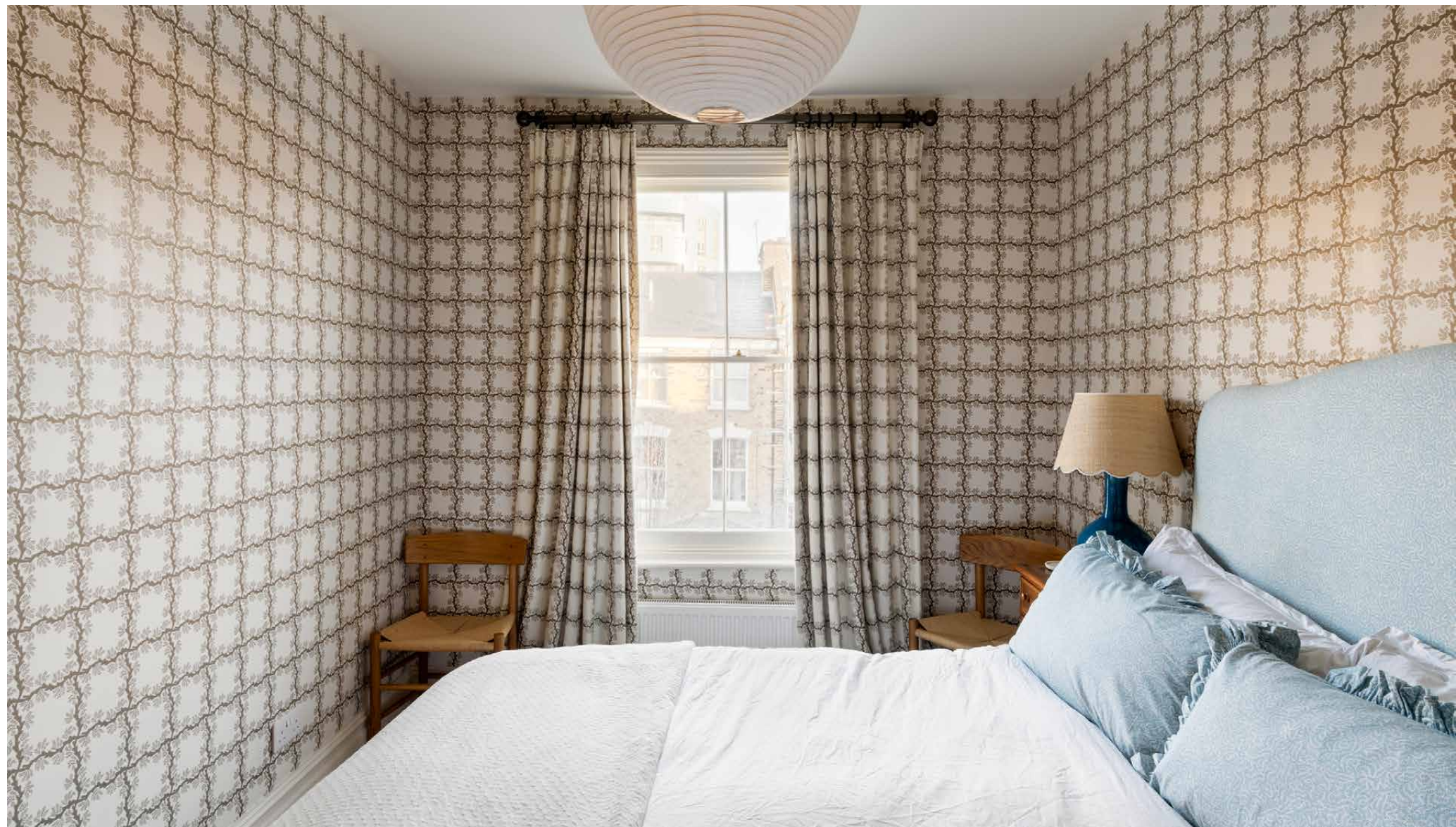




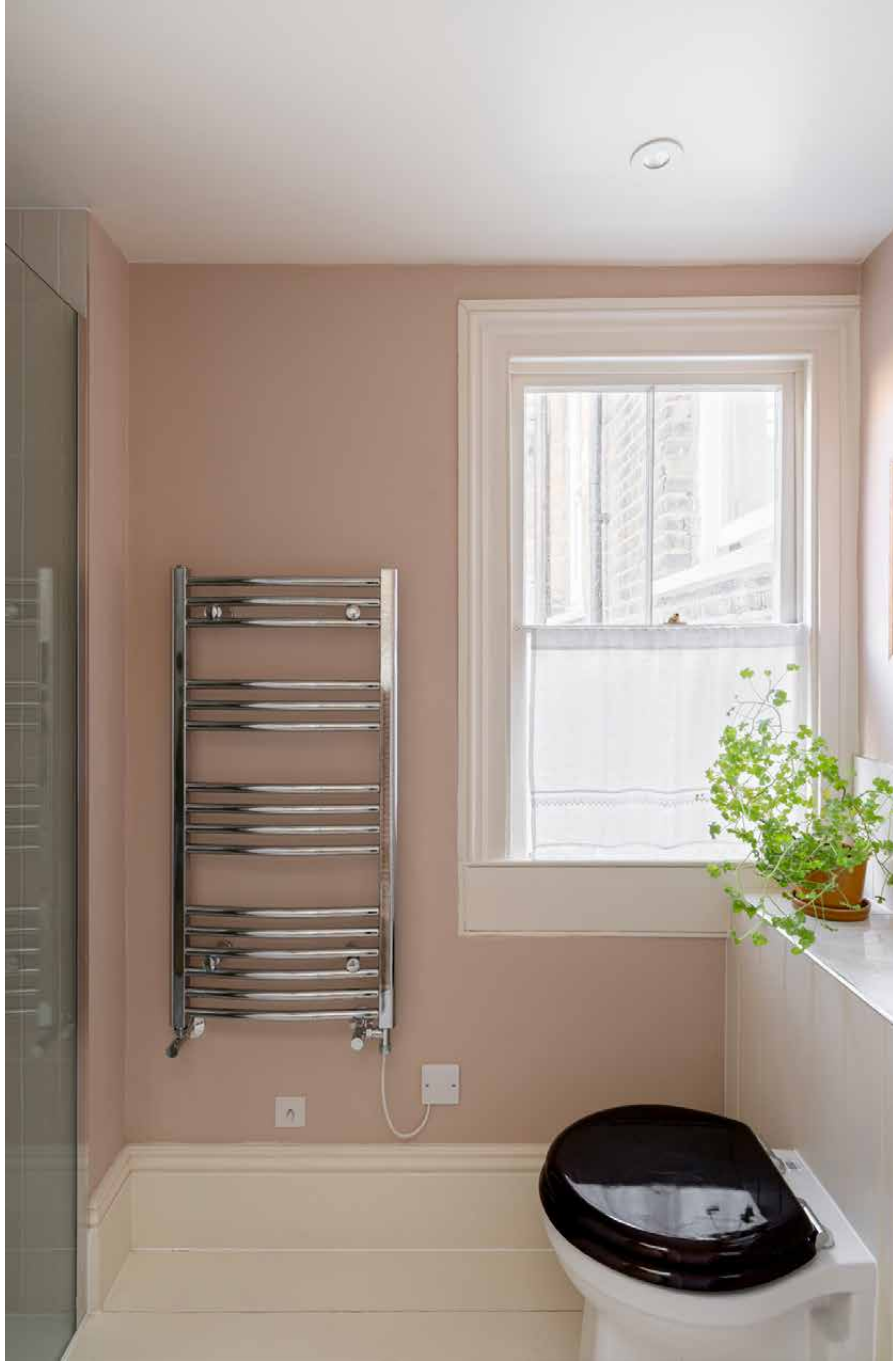














# Outdoor space

At the back, a private garden offers space to unwind, eat outside and grow. Raised beds line the lawn with herbs, while a paved terrace just outside the kitchen is set for alfresco meals. Planting climbs the fencing and softens the brickwork, offering a green outlook from inside.

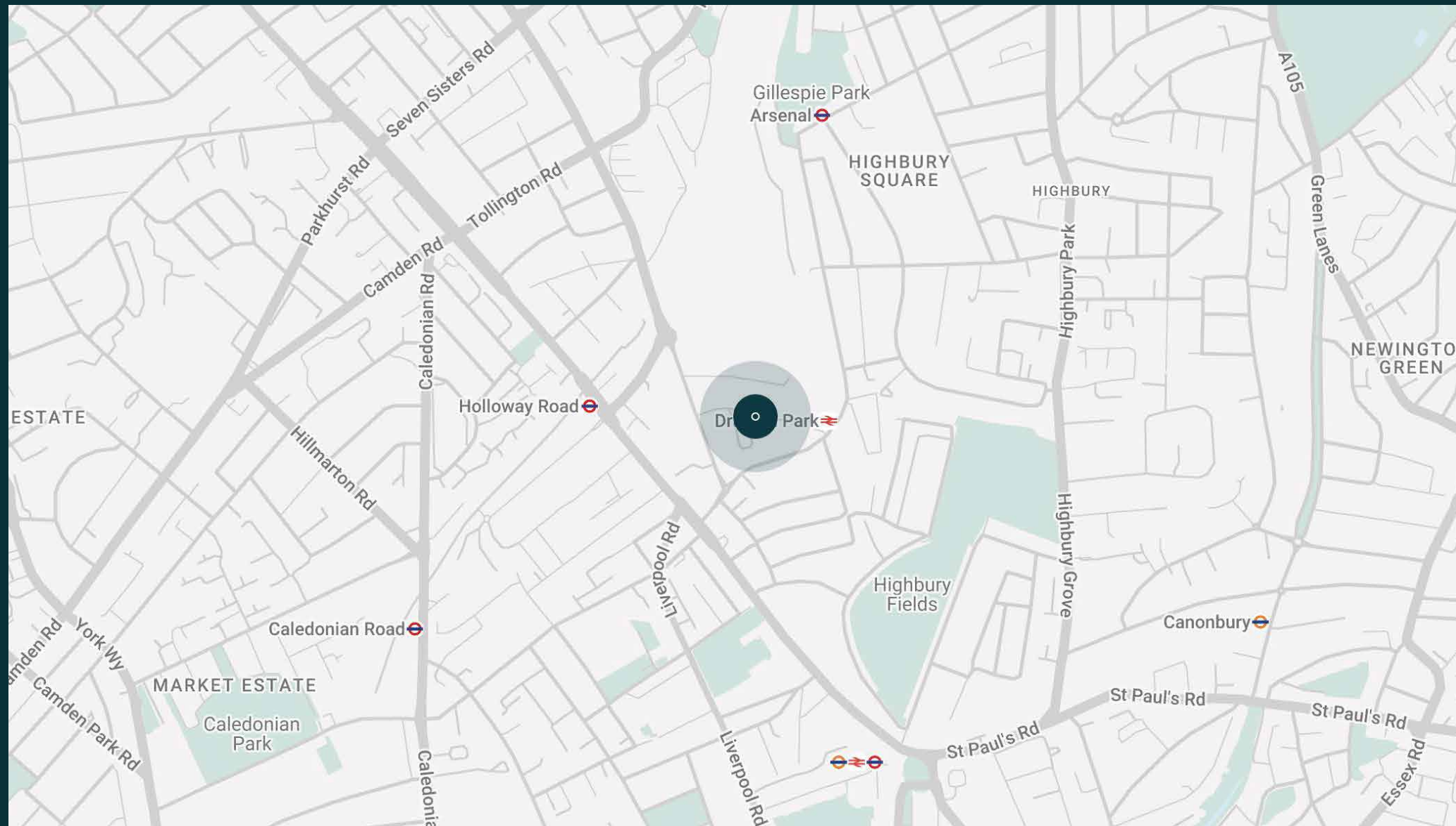


# The neighbourhood

Bryantwood Road sits in a quiet pocket of Islington, close to the cafés, shops and neighbourhood restaurants of Upper Street. It's a setting that balances village-like calm with the energy of London just beyond your door. Green space is nearby too. Highbury Fields and the Regent's Canal towpath are perfect for walks, picnics and weekend wandering to Colombia Road Flower Market. Just around the corner, Westerns Laundry offers seafood and Spanish small-plates, or Trullo is just slightly further afield for homely Italian cuisine.







# Property features

- Design by Mason Gillibrand Architects
- Interior furnishings by Soane Britain
- Open-plan kitchen and dining room
- Two reception rooms
- Principal bedroom suite
- Three further bedrooms
- Family bathroom
- Shower room
- Private garden

---

Approx. 1,950 sq ft / 180 sq m





# Guest & concierge services

Our concierge team are here to help guests settle in, seamlessly. Centre court tickets to Wimbledon, Premier League seats with the best views, Savile Row tailors on standby, or a private chef to cater to individual tastes – we aim to elevate every stay.

From the moment of booking with us, each guest has a single point of contact to finesse the details. Our statement spaces are just the starting point – to ensure everyone feels at home, our rates include:

- 
- Weekly housekeeping
  - Flexible check-in/out
  - Luxury linens and Bamford toiletries
  - Legal compliance on all our homes
  - A personal welcome and arrival essentials
  - Unlimited access to guest services and tailored experiences
  - Professional inventory inspection before and after every stay
  - Access to a curated portfolio of sole agency properties





Please get in touch if you have any questions  
or require any further information.

---

[hello@domusstay.com](mailto:hello@domusstay.com)

+44 (0)20 8168 8880

The property particulars are a guide not statements. Descriptions, photographs, and plans are for guidance only. The Property is offered "subject to contract and references". No warranties, representations, License or Tenancy is given by Domus Stay. Our full disclaimer together with trading names and our Privacy Policy is shown on our website

© Domus Stay 2025. All rights reserved.

