

domus
stay.

Brookside House

THE COTSWOLDS & COUNTRY

7 Bedrooms, 4 Bathrooms
For 14 guests





Heritage interiors, seasonal gardens and space to come together. Settle into the peaceful rhythm of this Cotswolds retreat.

A former hunting lodge reimagined for modern countryside living. Draped in wisteria and climbing greenery, this historic stone house captures the picturesque charm of Cotswolds living.

Split between a main house and self-contained cottage, Brookside House is tailor-made for convivial get-togethers. Interiors are cosy, layered and transportive: think open-log fires, tactile fabrics and four-poster beds. Step outside, and the walled garden blooms through the seasons with fruit trees, while direct access to nearby footpaths places the surrounding countryside quite literally on the doorstep.



The living spaces

The large drawing room retains a thoroughly traditional character, with botanical-patterned upholstery, an open fire and tall windows that draw in leafy garden views. A vintage grand piano lends itself to unhurried evenings of music and conversation, while an office and snug are tucked away at the back – offering a quiet spot for home working and down-time.





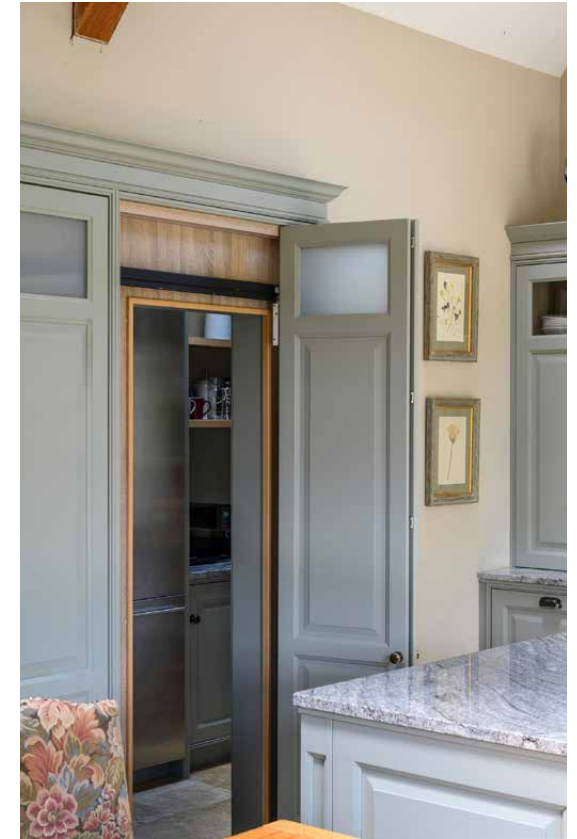


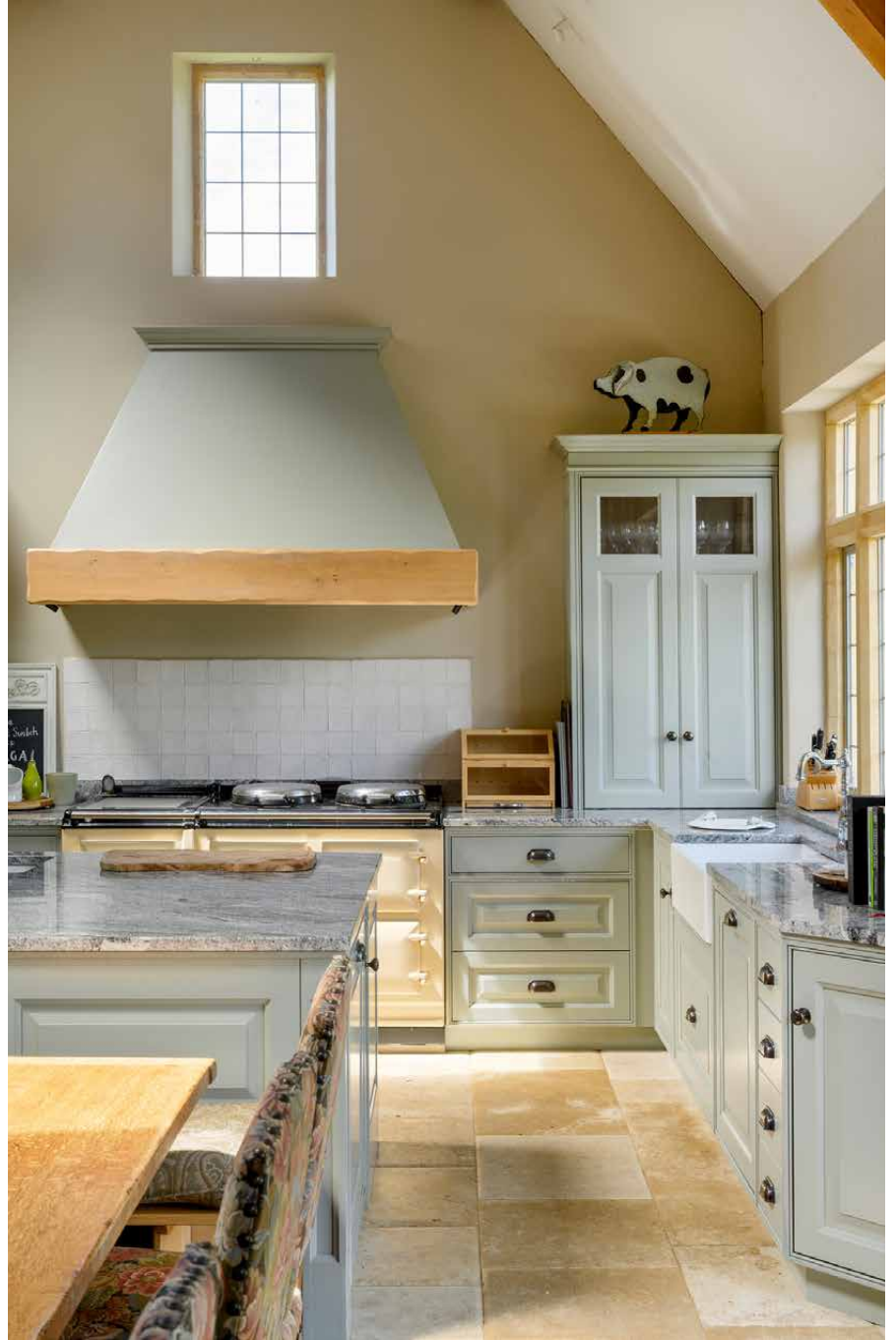


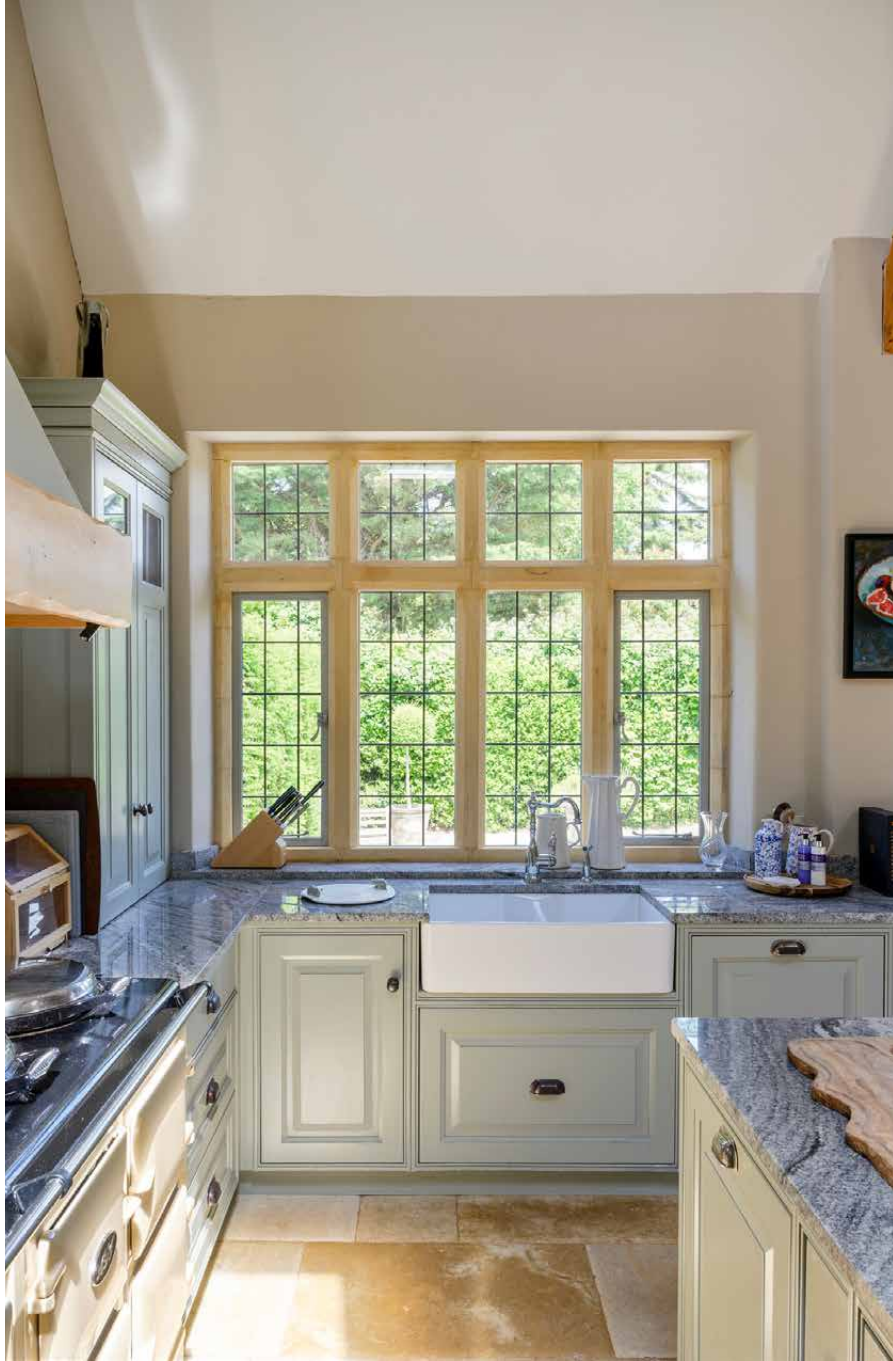


Kitchen & dining

Voluminous proportions and reams of natural light give the country-contemporary kitchen a thoroughly uplifting feel. Pale stone floors sit beneath lofty vaulted ceilings, while latticed French windows open directly onto the terrace beyond – inviting the outside in. Classic duck-egg blue cabinetry anchors the space, complemented by a series of hi-tech appliances. Gather round the sculptural wood dining table for leisurely brunches, while the al fresco patio is set for warm-weather entertaining.







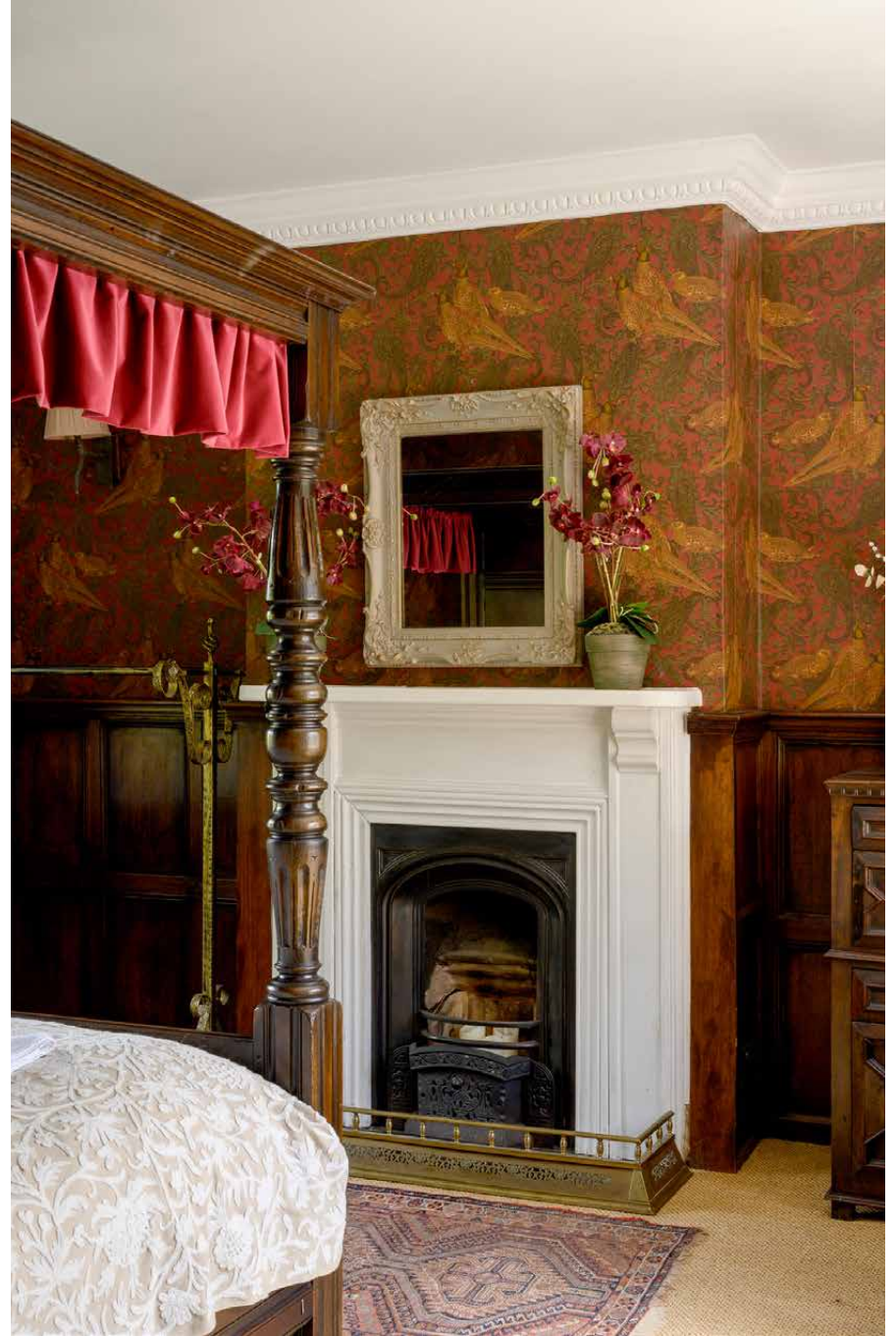


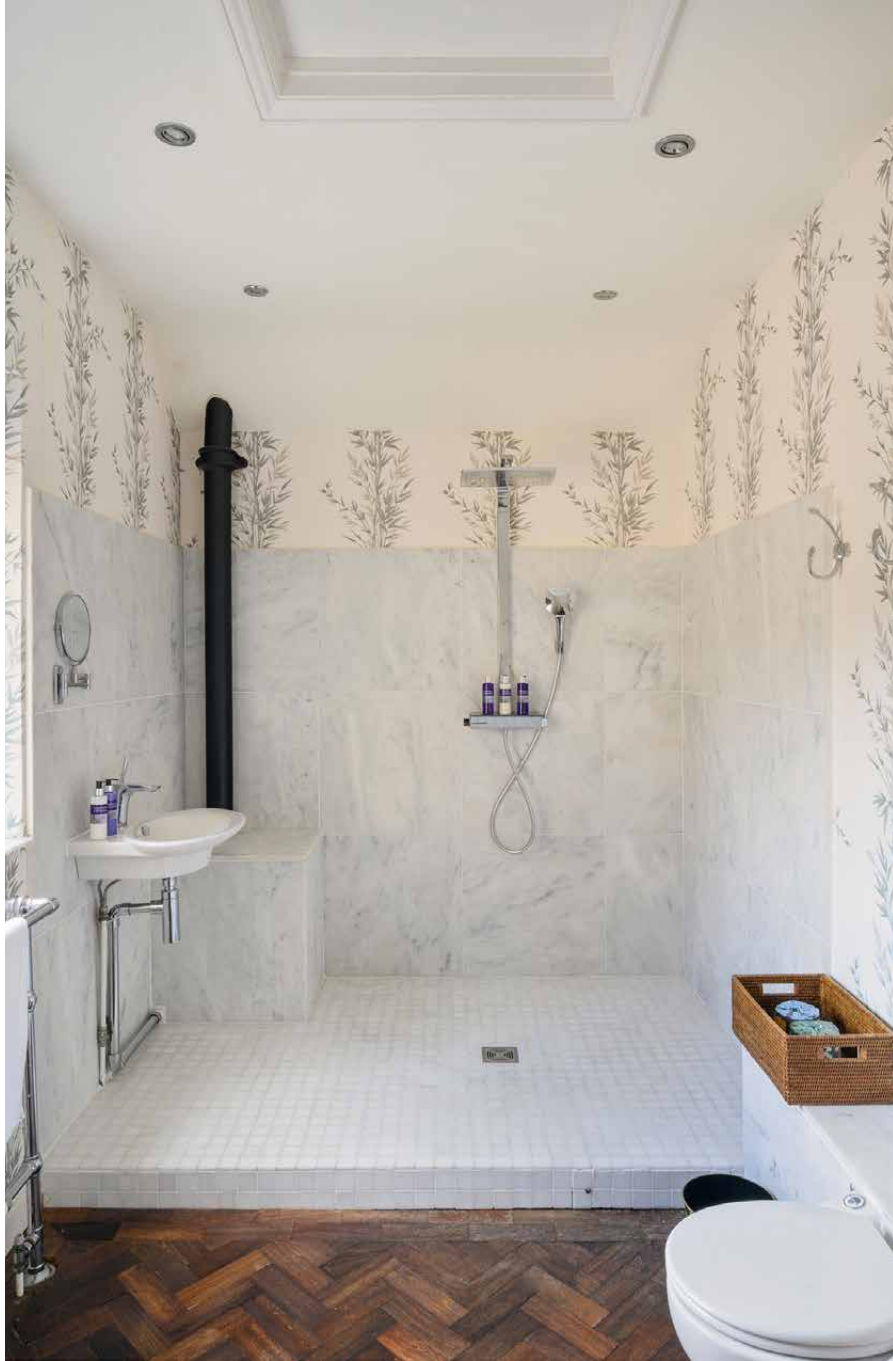


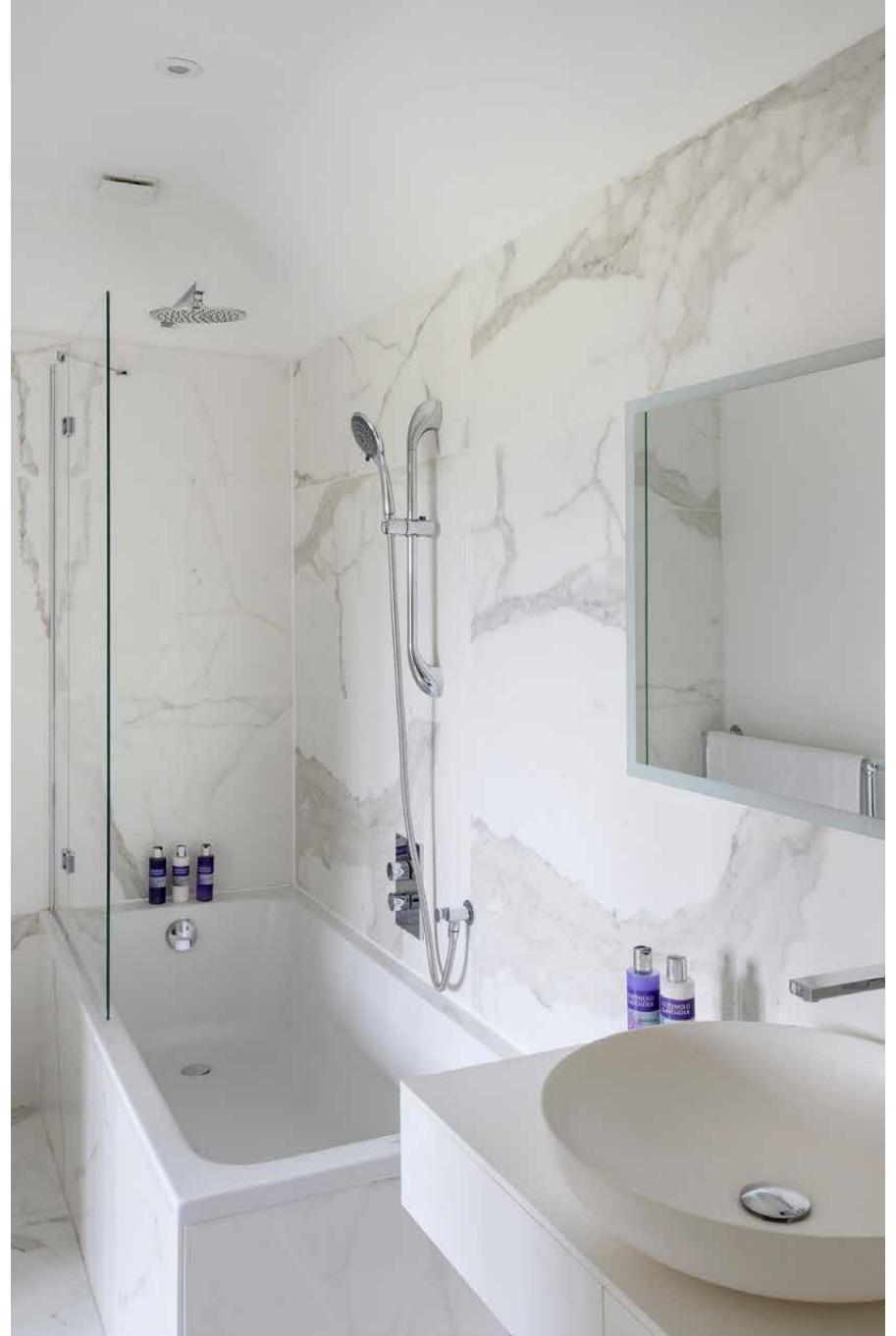


Bedrooms & bathrooms

Individually styled and tranquil in atmosphere, the main house's five bedrooms are restful enclaves with far-reaching rural vistas. Some are richly panelled in dark timber with heritage four-poster beds; others are paler in tone, with sprigged fabrics and softened natural light. Across the bathrooms, contemporary marble finishes introduce a clean counterpoint to the traditional architecture.









The cottage

Converted in the 19th century, the cottage sits as a natural extension of the main house, sharing its elevated views across the Cotswold hills and towards the village lane of Laverton. Fully self-contained, it offers a private retreat ideal for guests, extended family or staff.











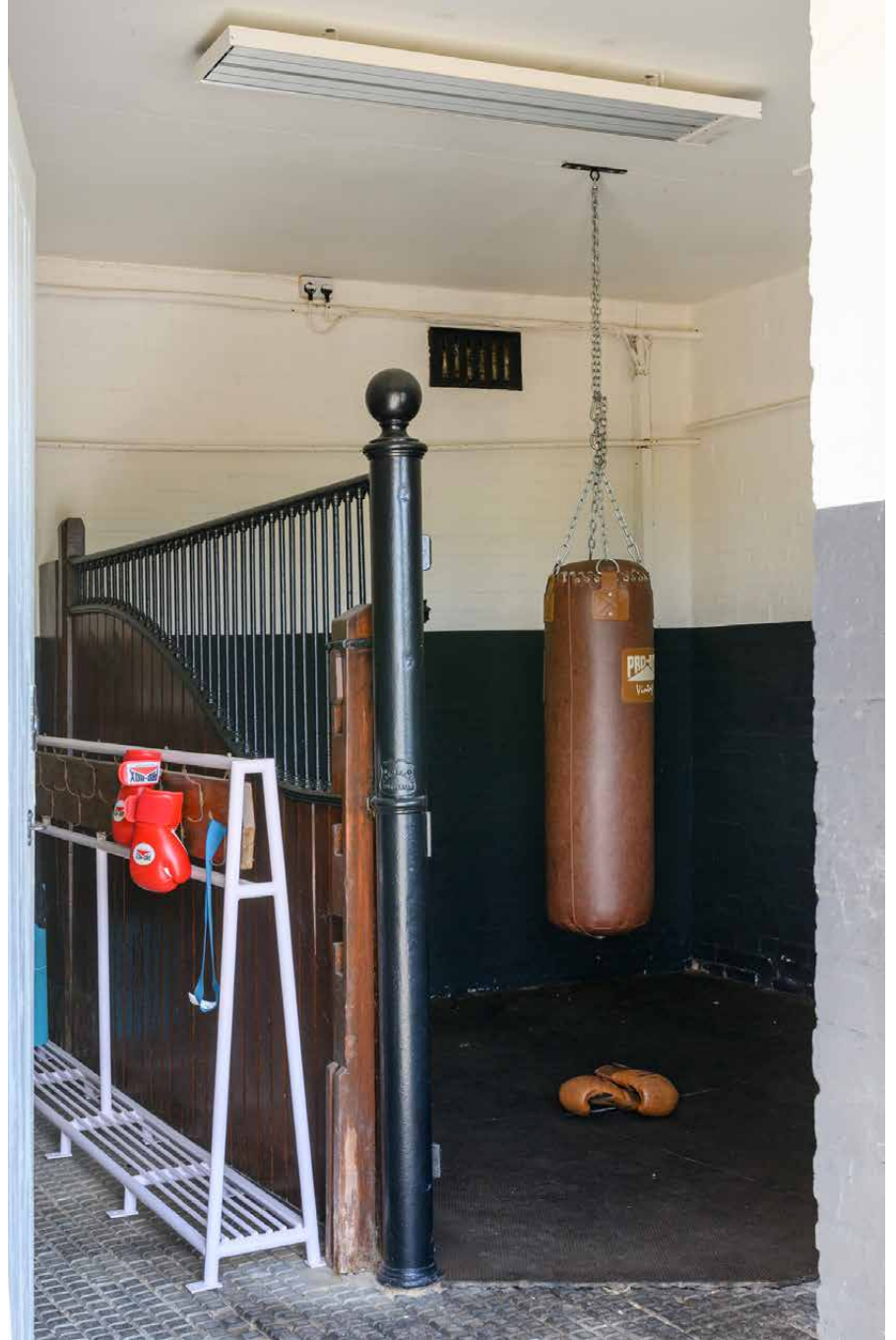




Outside space

The south-west facing gardens capture long afternoon light and sunset views across the rolling Cotswold landscape. A heated outdoor swimming pool sits within a traditional walled rose garden, while a Cotswold stone barbecue is perfect for relaxed warm-weather dining. Throughout the late summer, an orchard becomes abundant with apples, plums, damsons and figs, with a pantry equipped for baking and seasonal cooking.

A Victorian stable yard has been reimagined as an air-conditioned gym, complete with a Peloton, Pilates reformer, boxing ring and yoga equipment, while direct access from the bottom of the garden opens onto the Winchcombe Way and miles of walking routes.



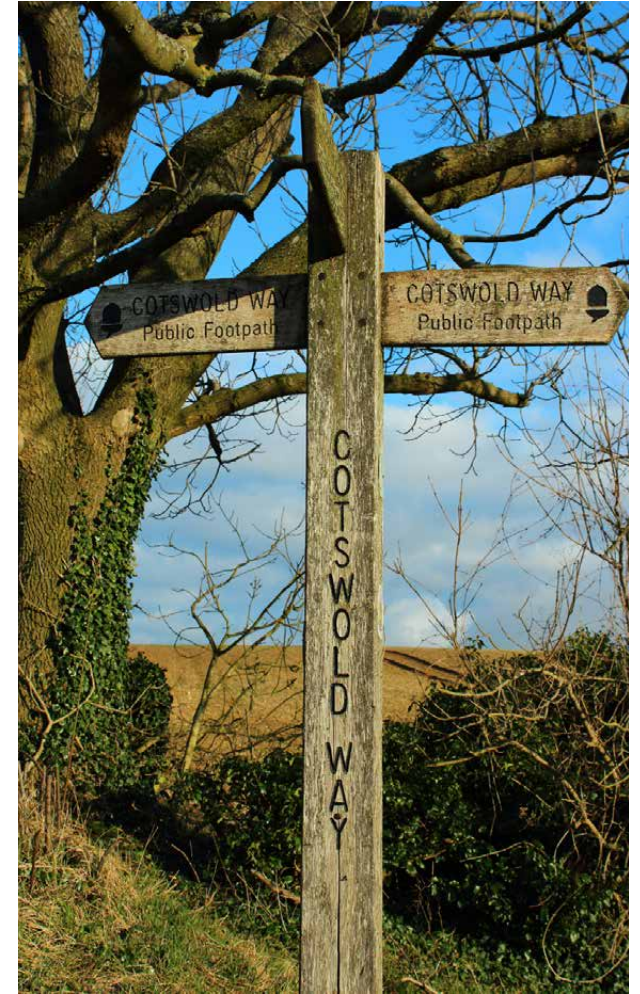




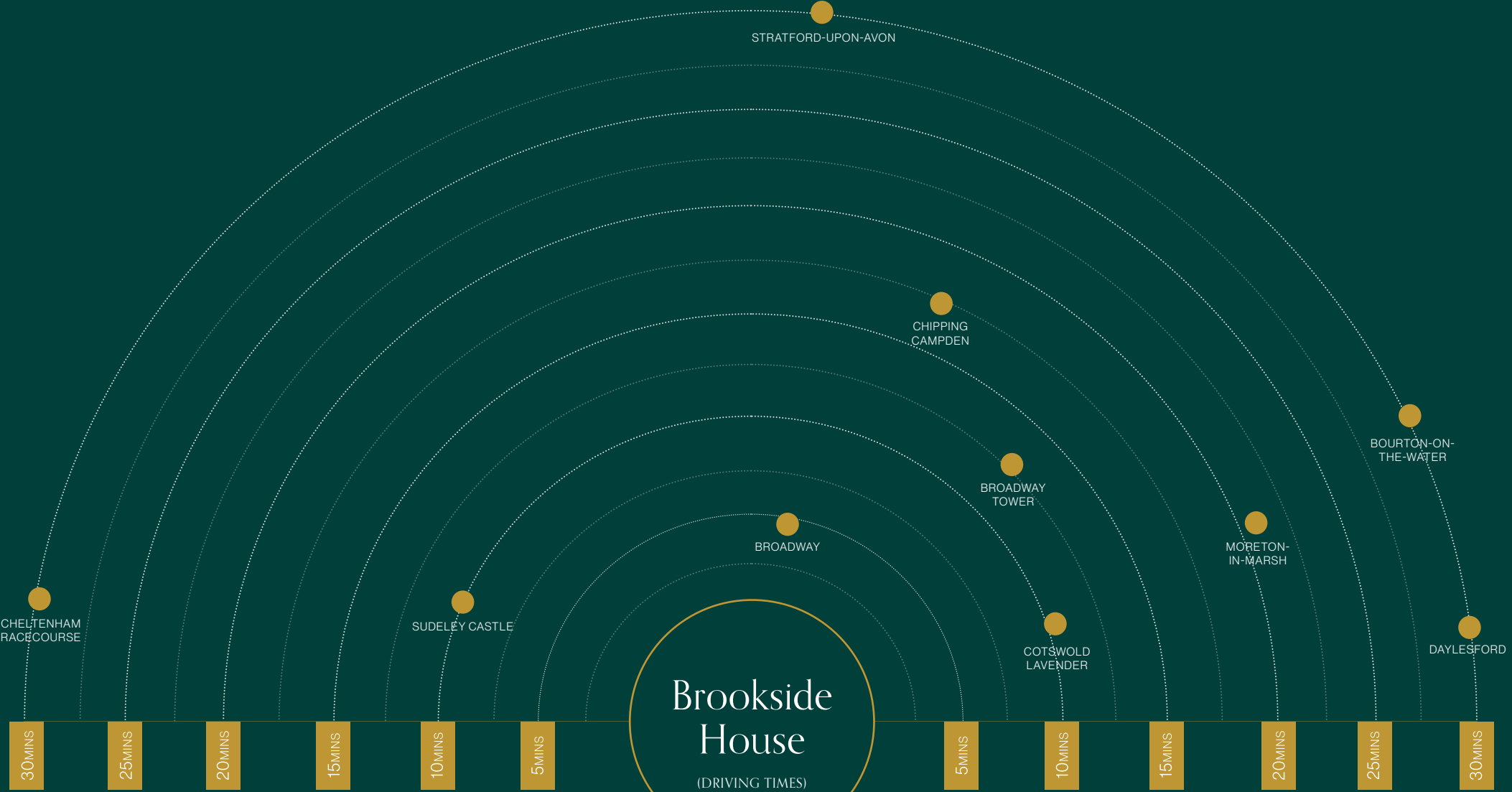


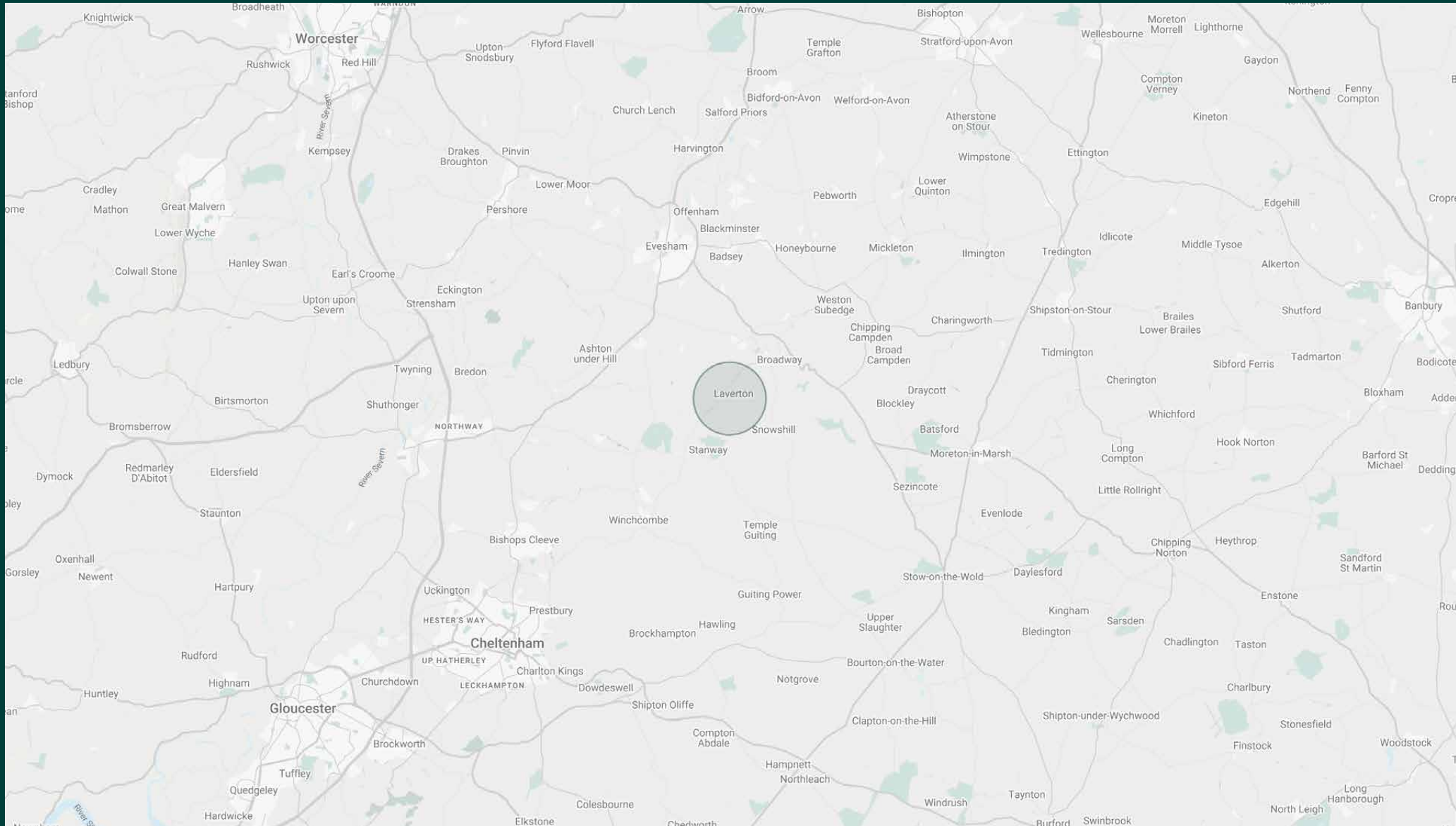
The surroundings

Set on the northern edge of the Cotswolds, Laverton is a peaceful village that puts you at one with nature. It's a short drive to Broadway – a town with enduring countryside charm. Enjoy coffees from Guilt Trip before perusing the independent boutiques and art galleries that line the High Street. During the summer months, grab picnic bits from Broadway Deli and head to the nearby Broadway Tower, a folly that rises up from the open hilltops, boasting some of the best views in the area. The rest of the region is within easy reach, be it Cheltenham for its racing and literary festivals, Daylesford's luxury spa or Stow-on-the-Wold's beloved antiques shops.



Brookside House
(DRIVING TIMES)





Property features

- Formal drawing room
- Open-plan kitchen and dining room
- Five bedrooms
- Three bathrooms
- Self-contained two-bedroom cottage
- Outdoor dining terrace with Cotswold stone barbecue
- Swimming pool
- Fully-equipped gym
- Private walled garden and orchards
- Direct access to walking routes
- Parking

What's included?

Personal check-in

Concierge and customisable services to add

Weekly housekeeping (for stays over seven nights)

Approx. 5,252 sq ft / 488 sq m



Guest & concierge services

Tennis coach or yoga instructor. Tables at renowned dining institutions, tickets to sporting or music events, and tours of the surrounding countryside: we're here to ensure stays are nothing short of exceptional. Working alongside our carefully selected partners, we put tastemakers and health and wellbeing experts at our guests' fingertips.

Our statement spaces are just the starting point – to ensure everyone feels at home, our rates include:

-
- Housekeeping
 - Flexible check-in/out
 - Luxury linens and toiletries
 - Legal compliance on all our homes
 - A personal welcome and arrival essentials
 - Unlimited access to guest services and tailored experiences
 - Professional inspection before and after every stay
 - Complete discretion



domus stay.

Please get in touch if you have any questions
or require any further information.

hello@domusstay.com

+44 (0)20 8168 8880

The property particulars are a guide not statements. Descriptions, photographs, and plans are for guidance only. The Property is offered "subject to contract and references". No warranties, representations, License or Tenancy is given by Domus Stay. Our full disclaimer together with trading names and our Privacy Policy is shown on our website

© Domus Stay 2025. All rights reserved.

