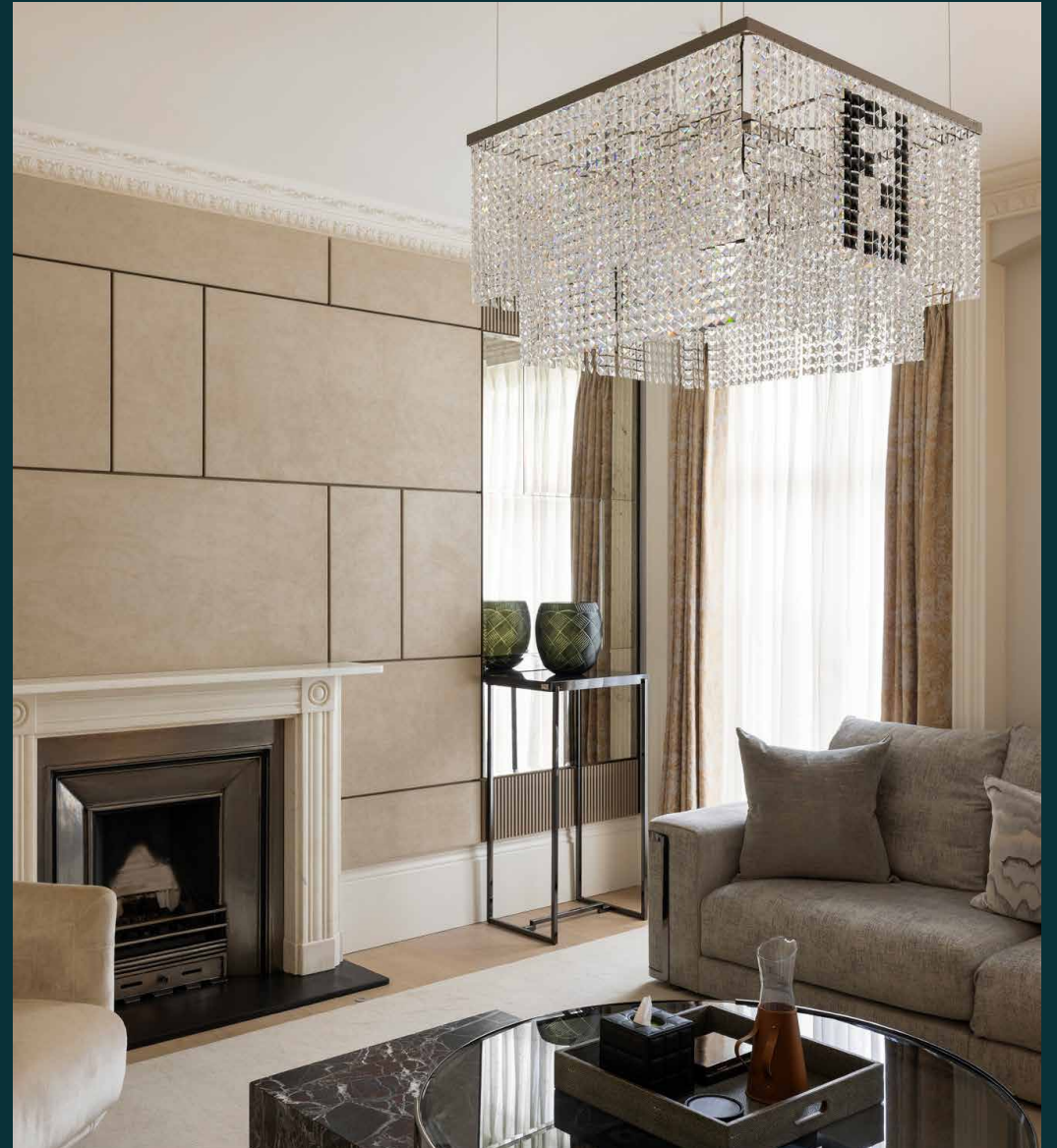


domus
stay.

Brompton Square

KNIGHTSBRIDGE

6 Bedrooms, 6 Bathrooms
For 12 guests

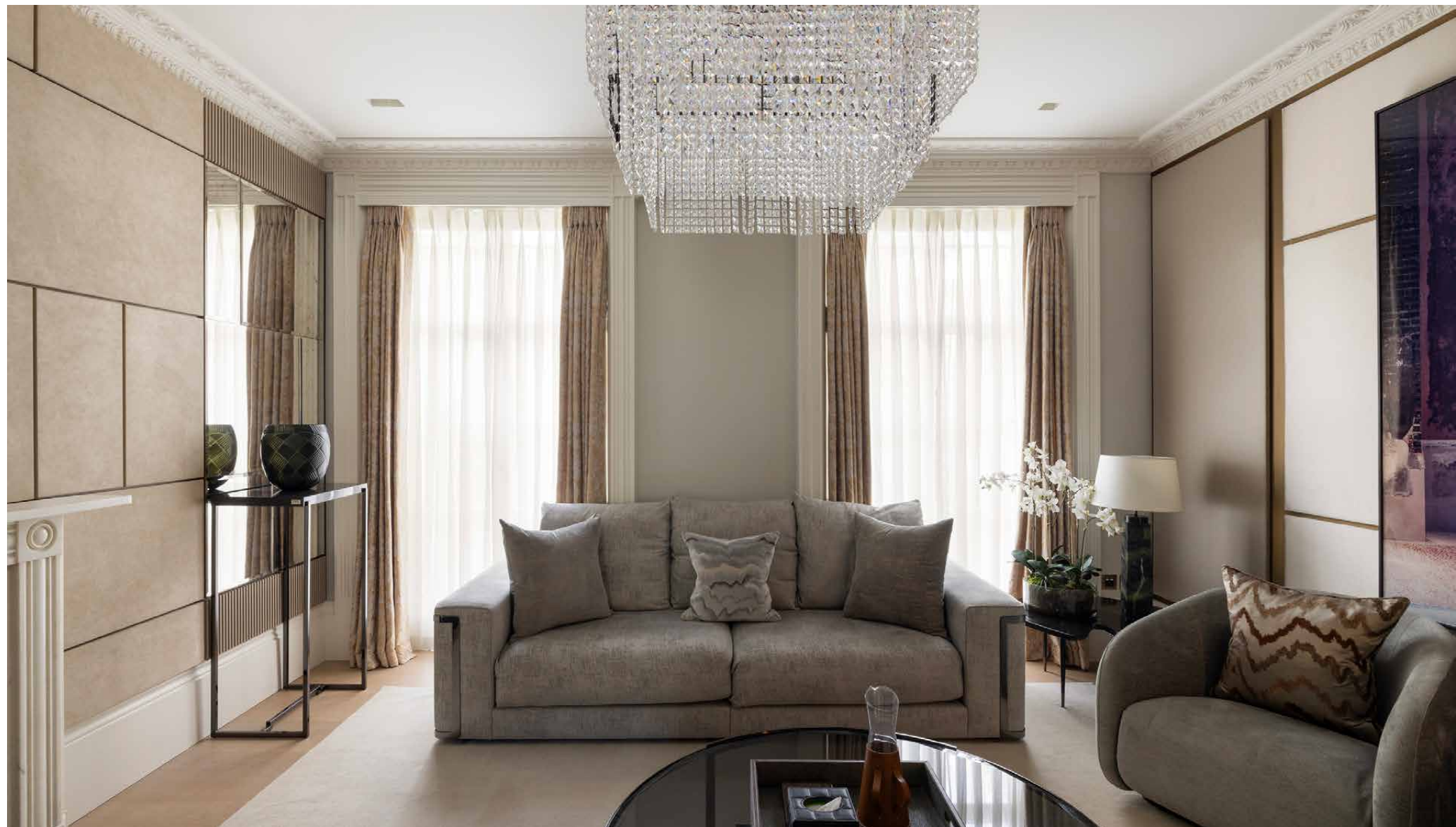




A showstopping blend of modern design and classic elegance plays out across the nine floors of this Knightsbridge house to rent.

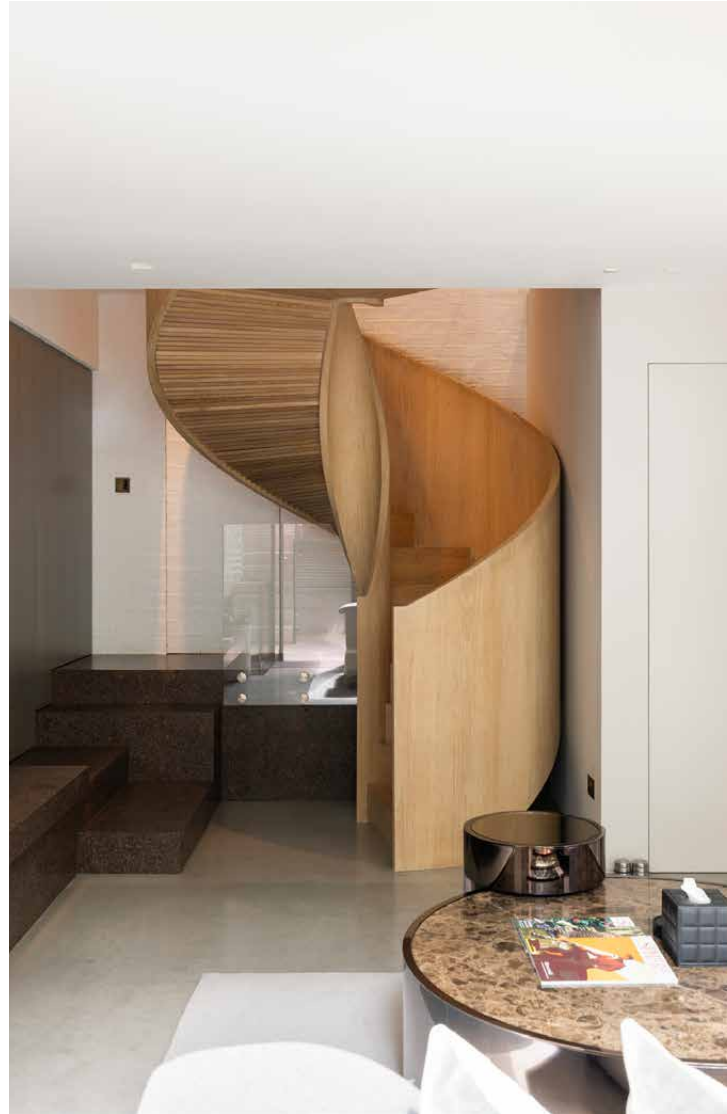
Echoing its prestigious Knightsbridge postcode, this six-bedroom holiday house exudes contemporary luxury with a refined interior palette, streamlined technologies and an abundance of light. It's easy to settle into the good life here, with nine spacious floors designed for entertaining and relaxation in equal measure.

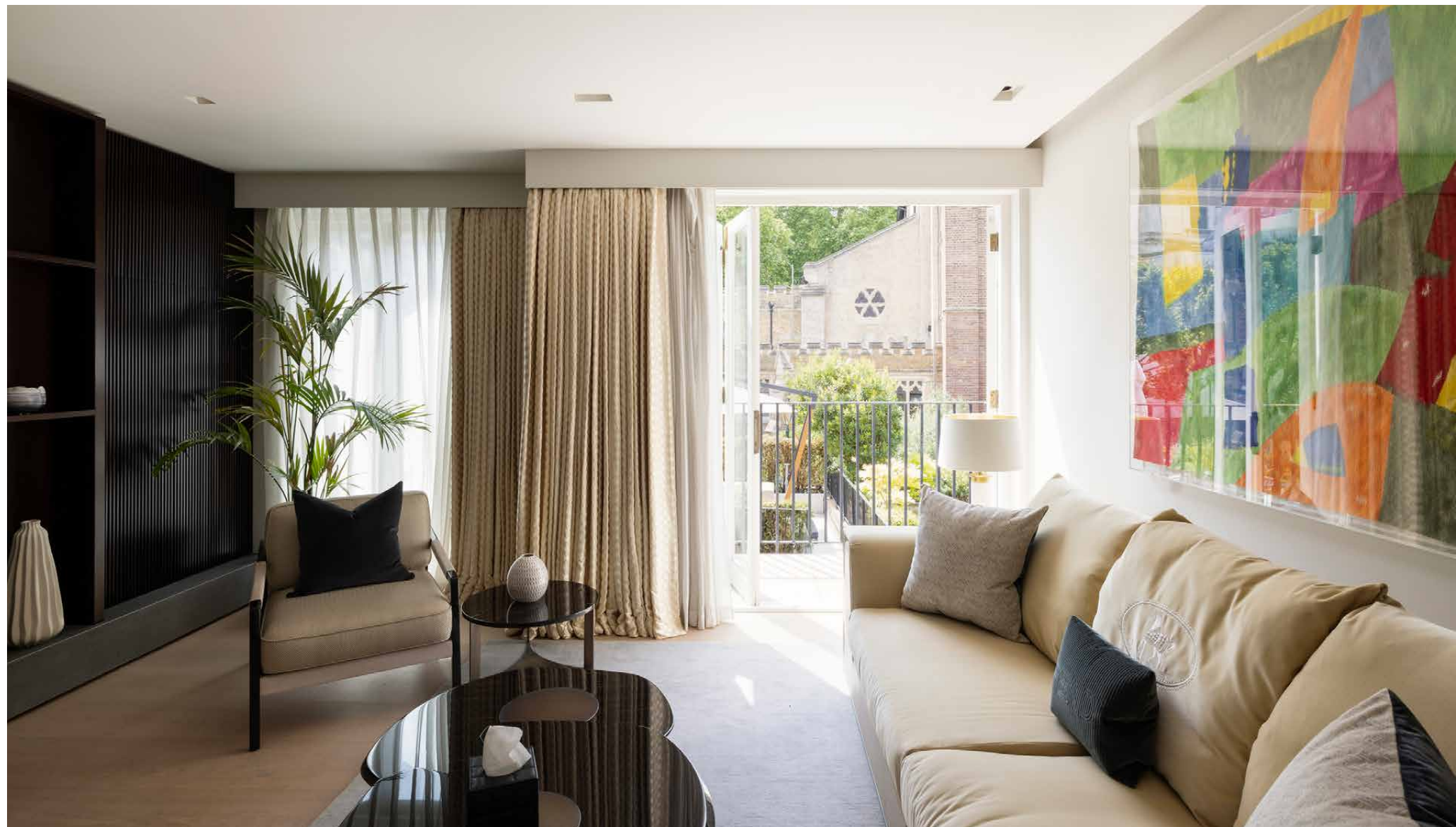




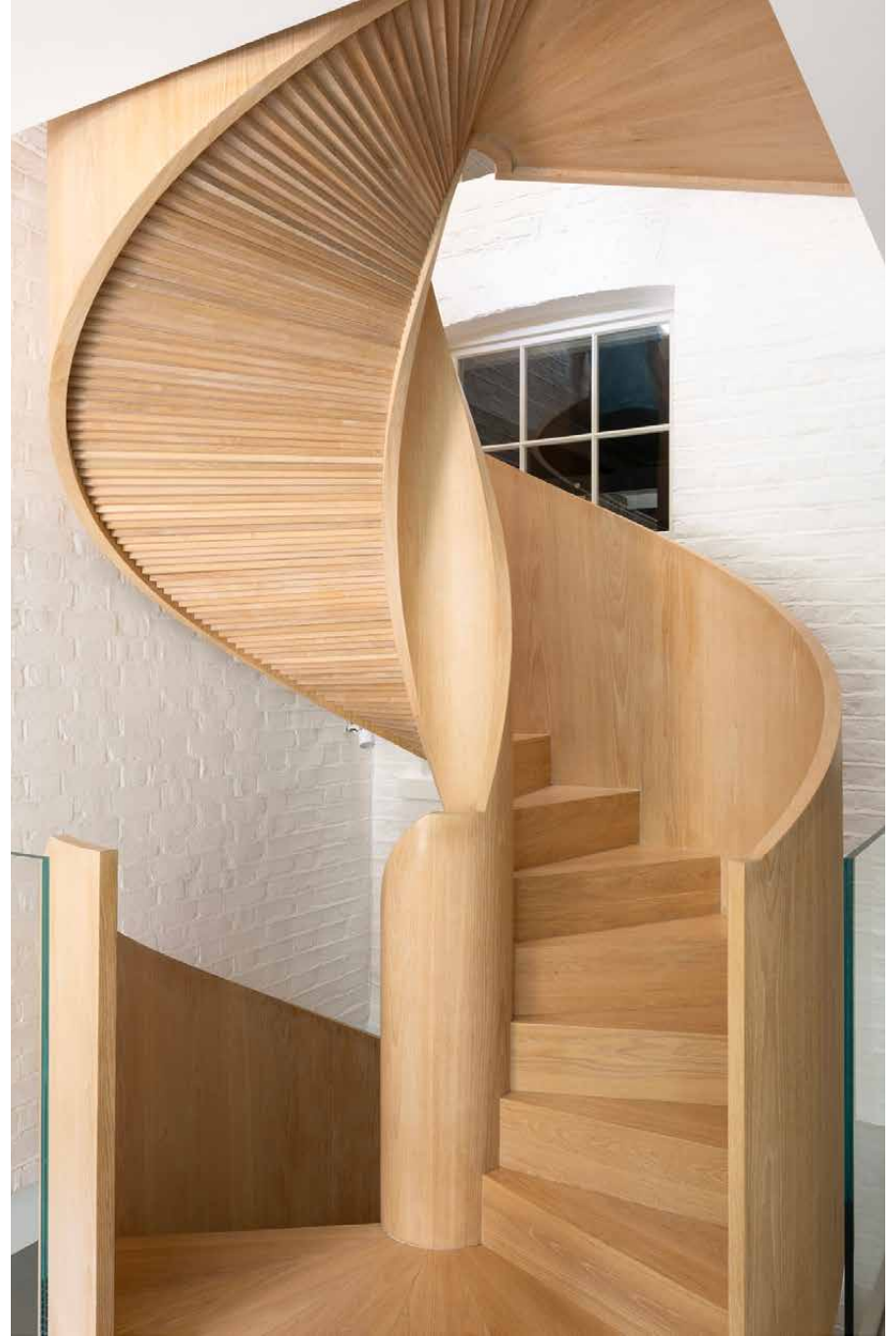
The living spaces

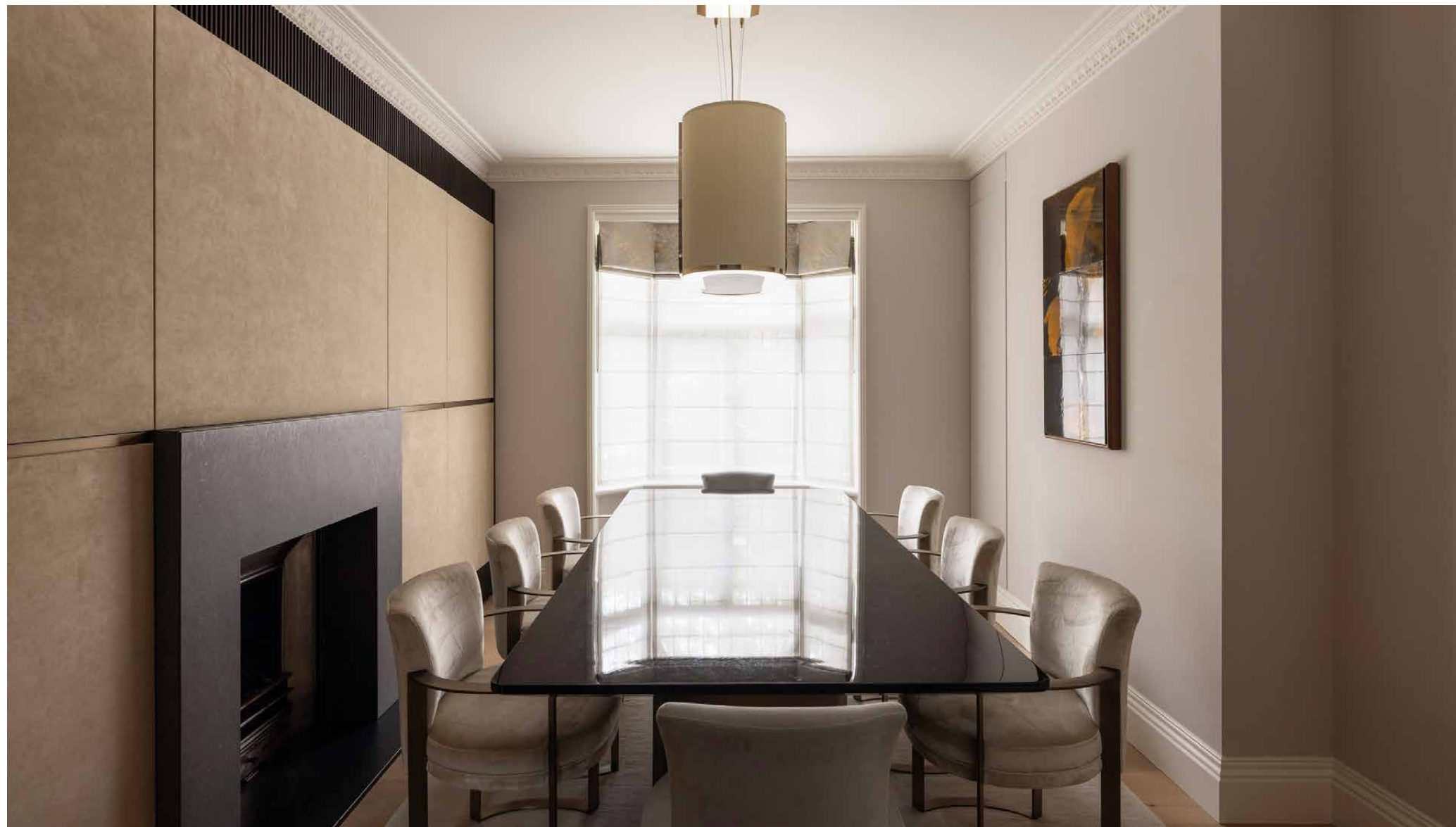
Brompton Square's various social spaces – including a formal reception room, lounge, dining room, media room and contemporary kitchen – are all connected by either the passenger lift or a striking spiral staircase, features that demonstrate the home's flawless architectural character. With interior design by Fendi, there's a sophisticated feel to these spaces: think mirrored and geometric wall panelling, crystal chandeliers, ambient lighting and thoughtfully curated furnishings.

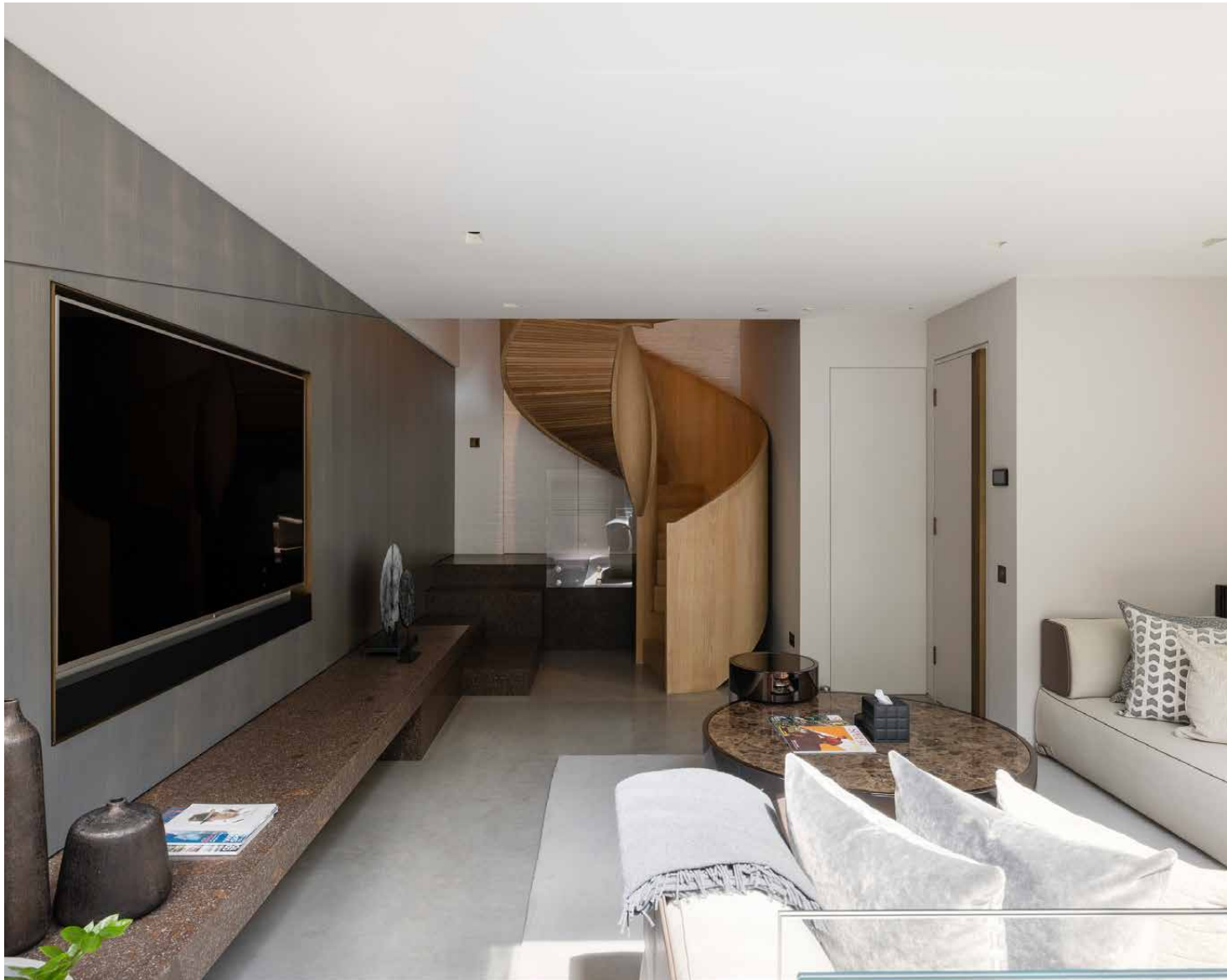






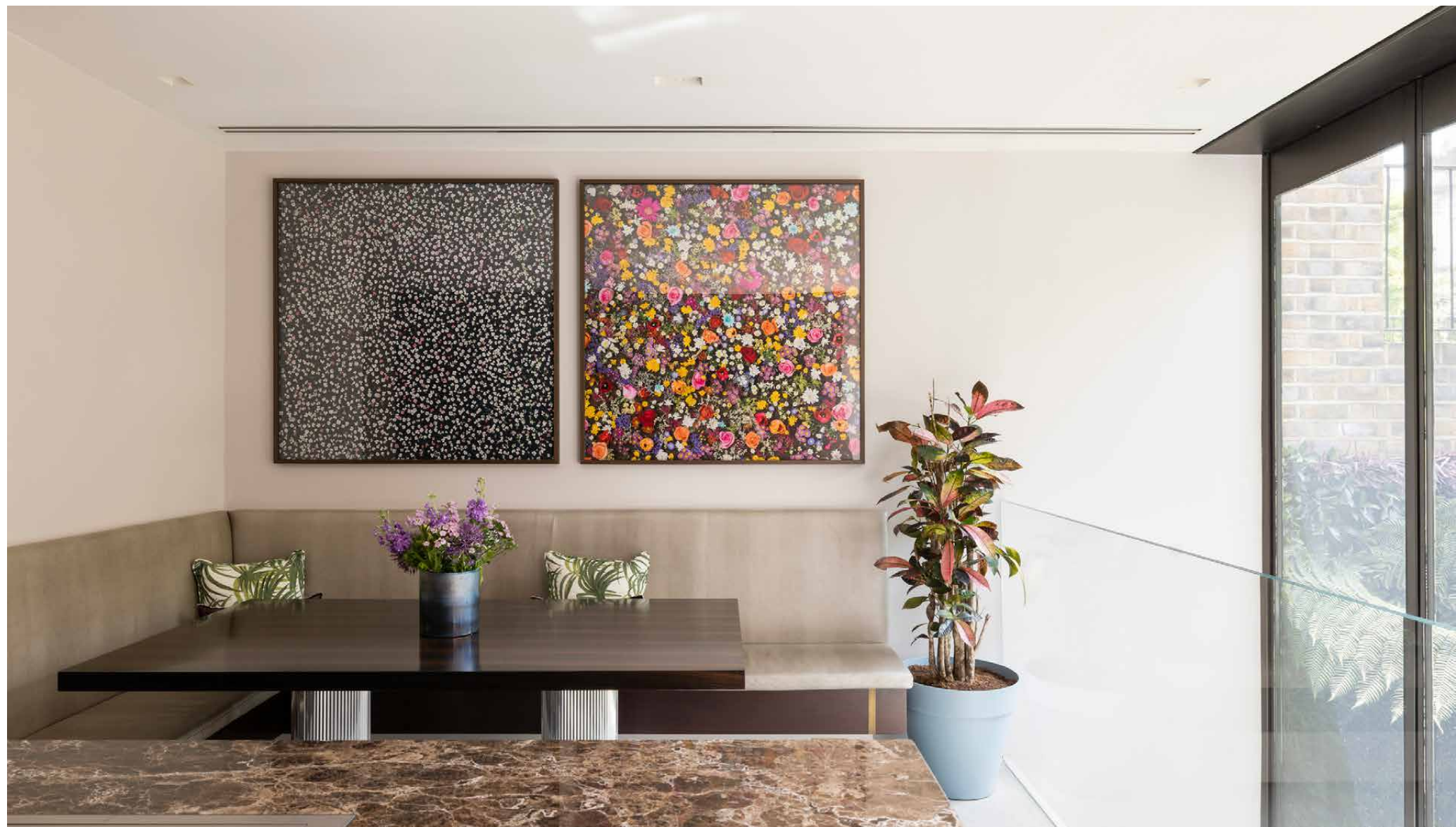






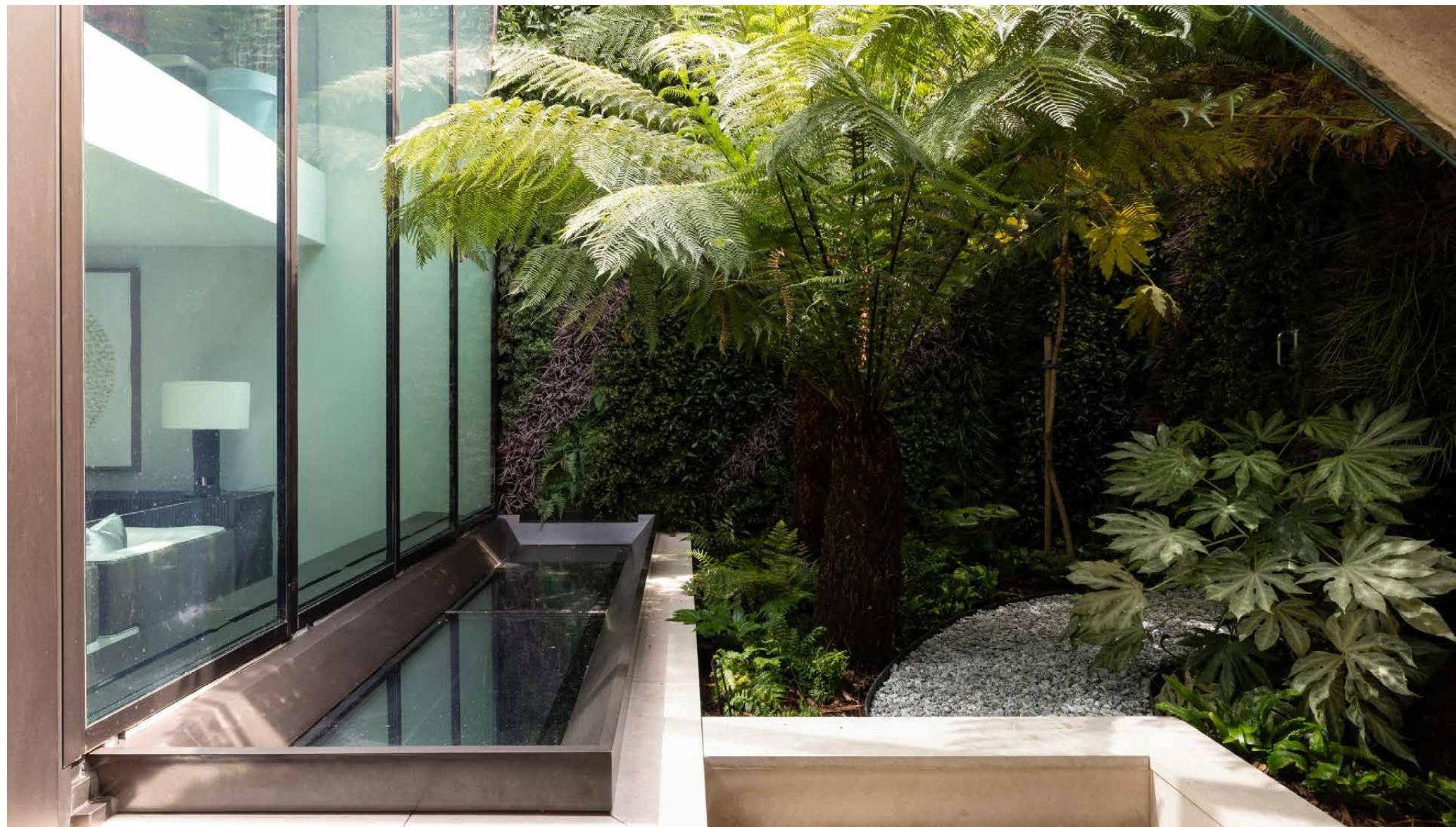
The bespoke kitchen is tailor-made for culinary creativity, centred by a stylish marble island. Gather friends for long weekend brunches, elegant dinner parties, or warm-weather drinks on the raised west-facing terrace – which has stunning vistas of the Brompton Oratory Church and the Holy Trinity Church. For a secluded alfresco spot, head to the calming roof terrace at the top of the home.







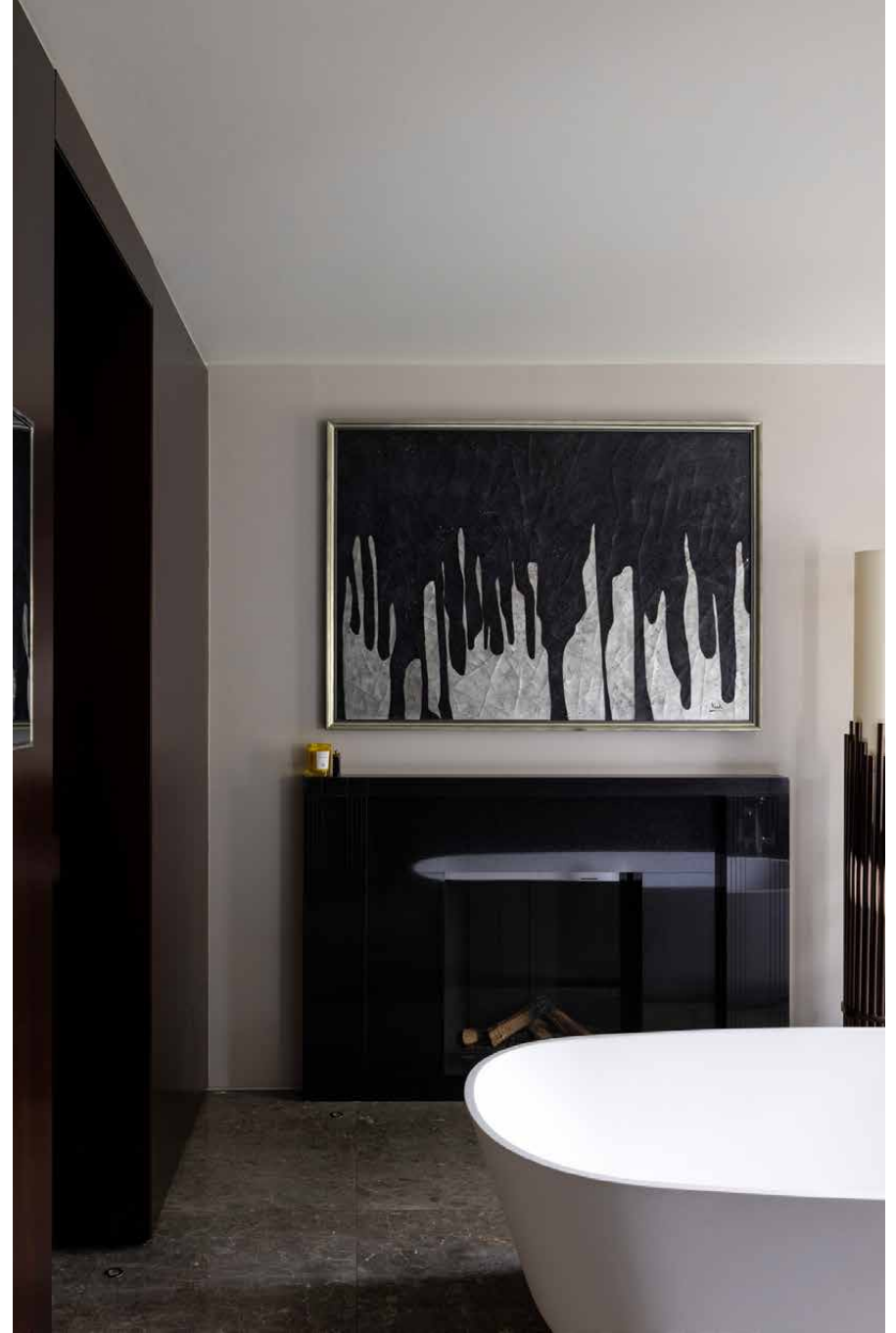
“Gather friends for long weekend brunches, elegant dinner parties, or warm-weather drinks on the raised west-facing terrace.”

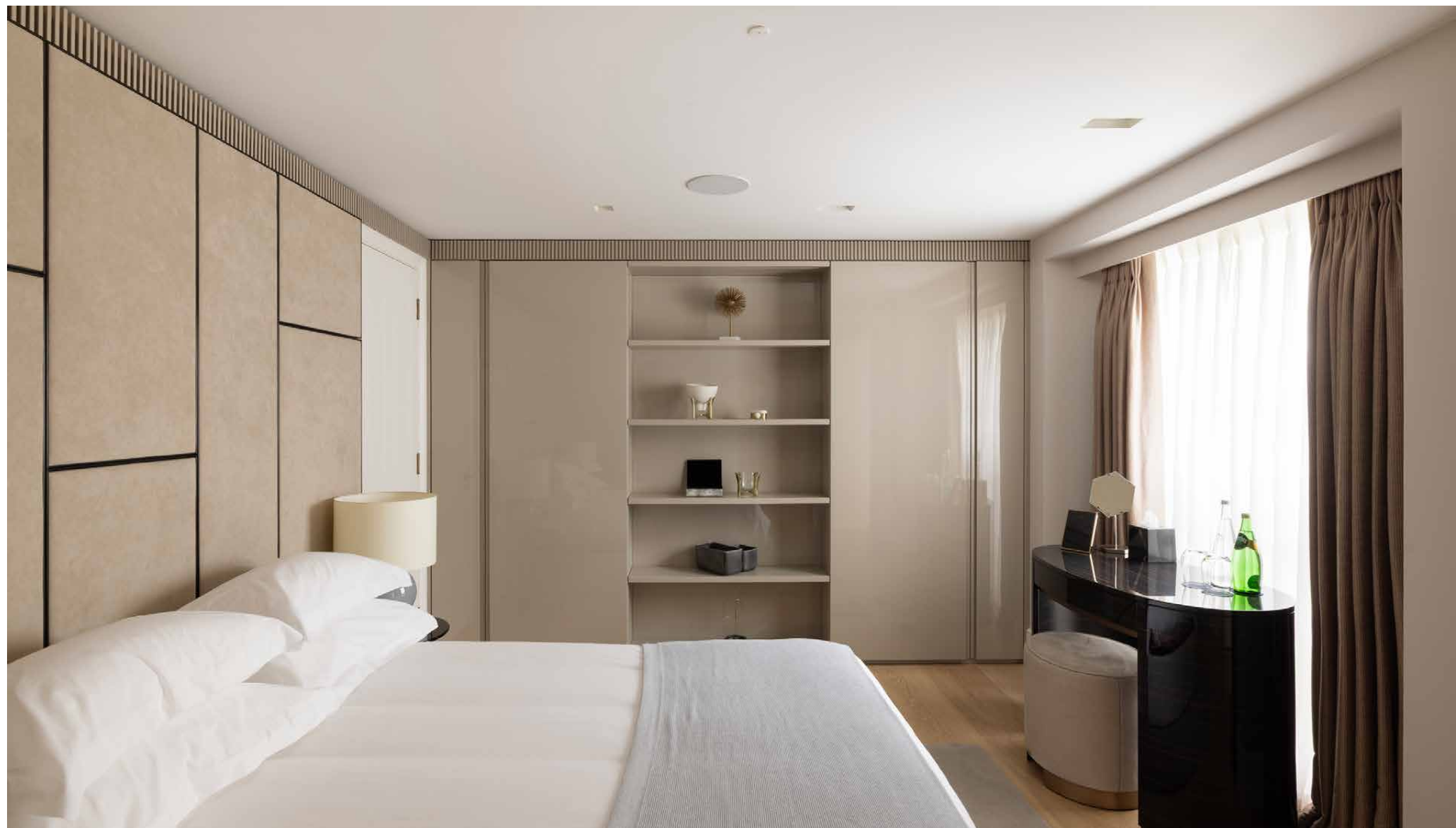


Bedrooms & bathrooms

Serene and sophisticated, the principal bedroom is a masterclass in luxury craftsmanship. Sunlight filters through sheer curtains, enhancing the room's soothing palette of warm neutrals. Head through to the handsome dressing room, with rows of glass-fronted wardrobes that are perfect to store new-found pieces. As for the en suite bathroom, a sculptural freestanding tub stands boldly in the centre of the room, flanked on either side by a marble dual vanity and fireplace. Family and guests can relax and rejuvenate in the five additional bedroom suites, each showcasing the home's distinguished interiors.

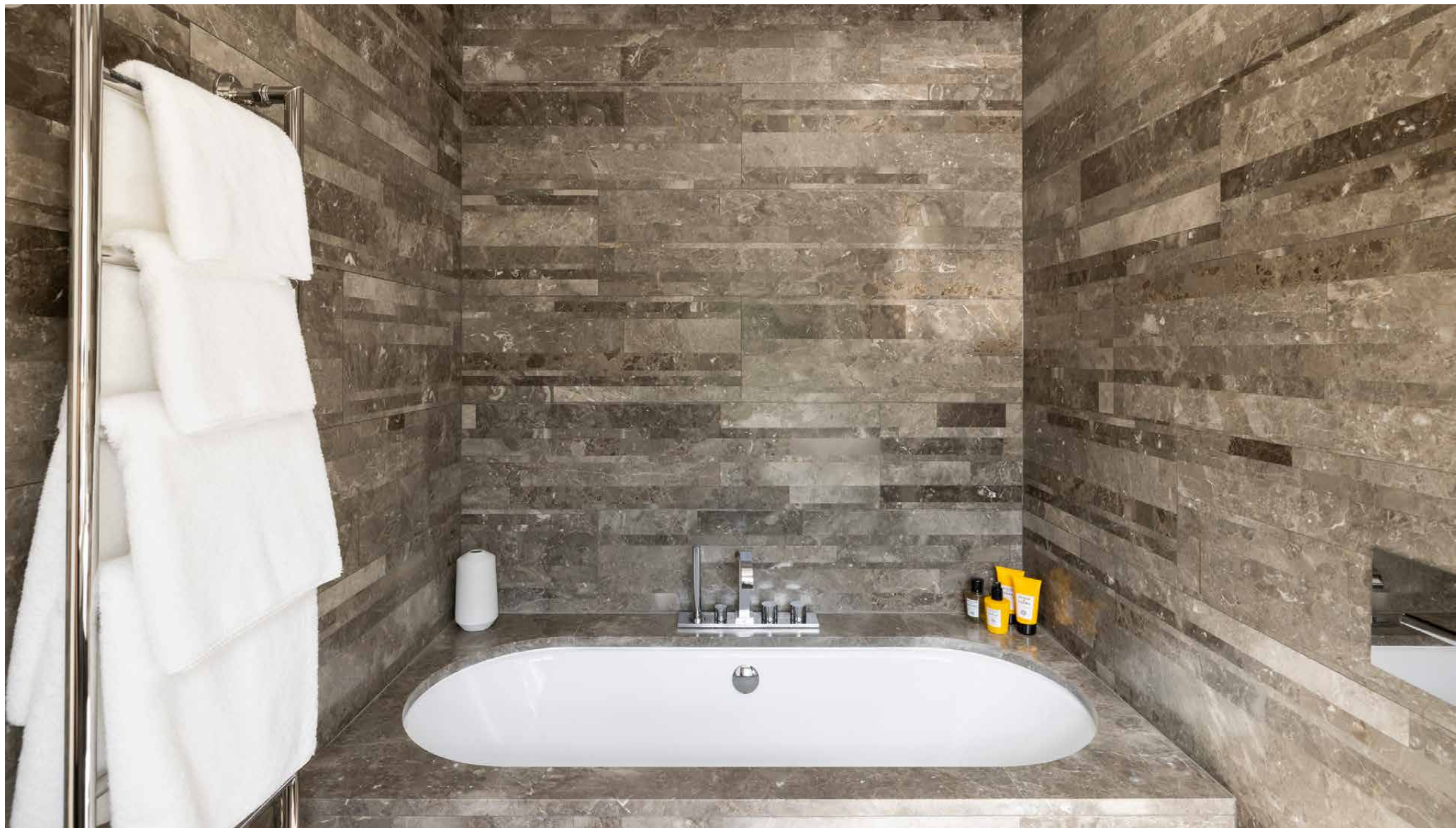






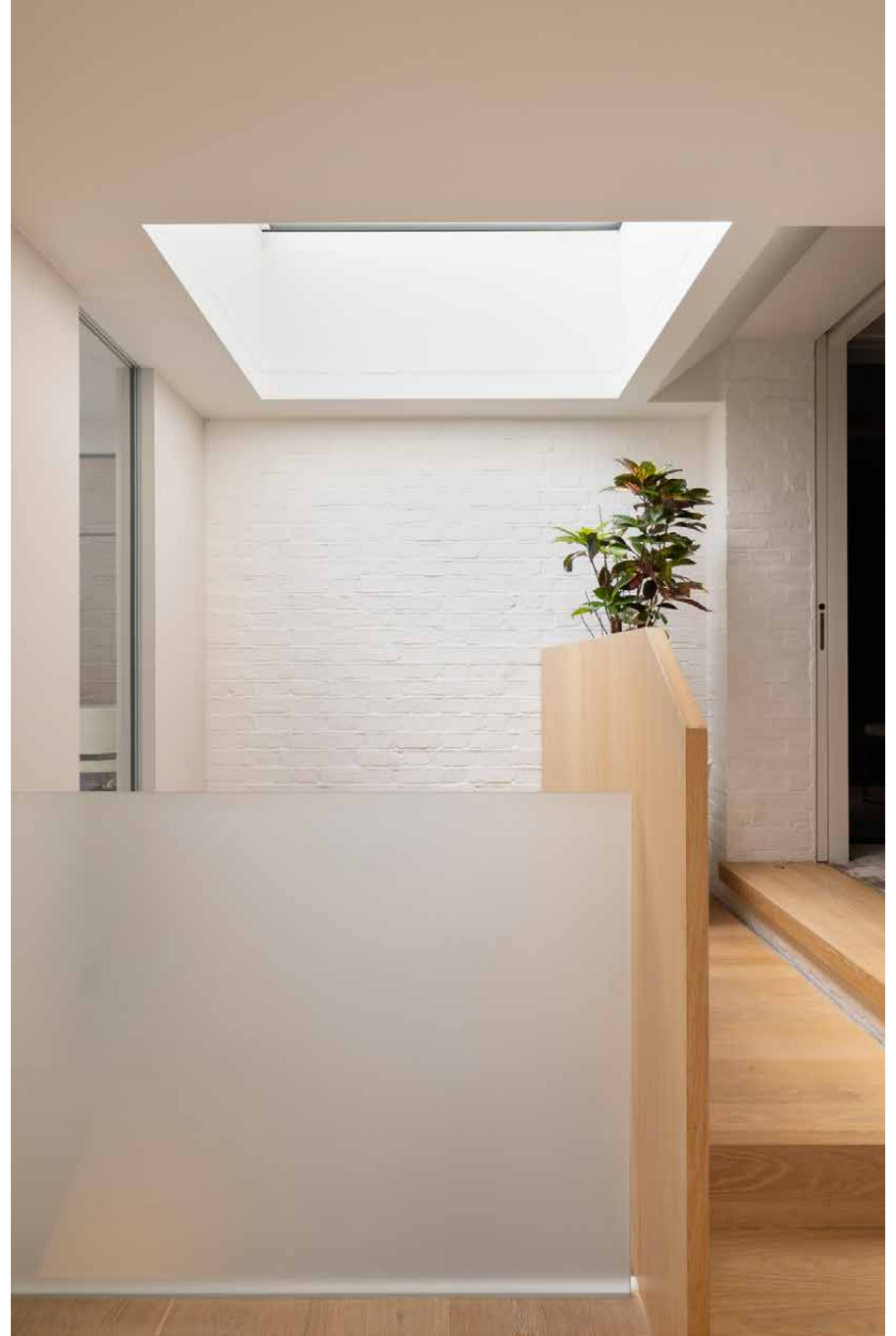








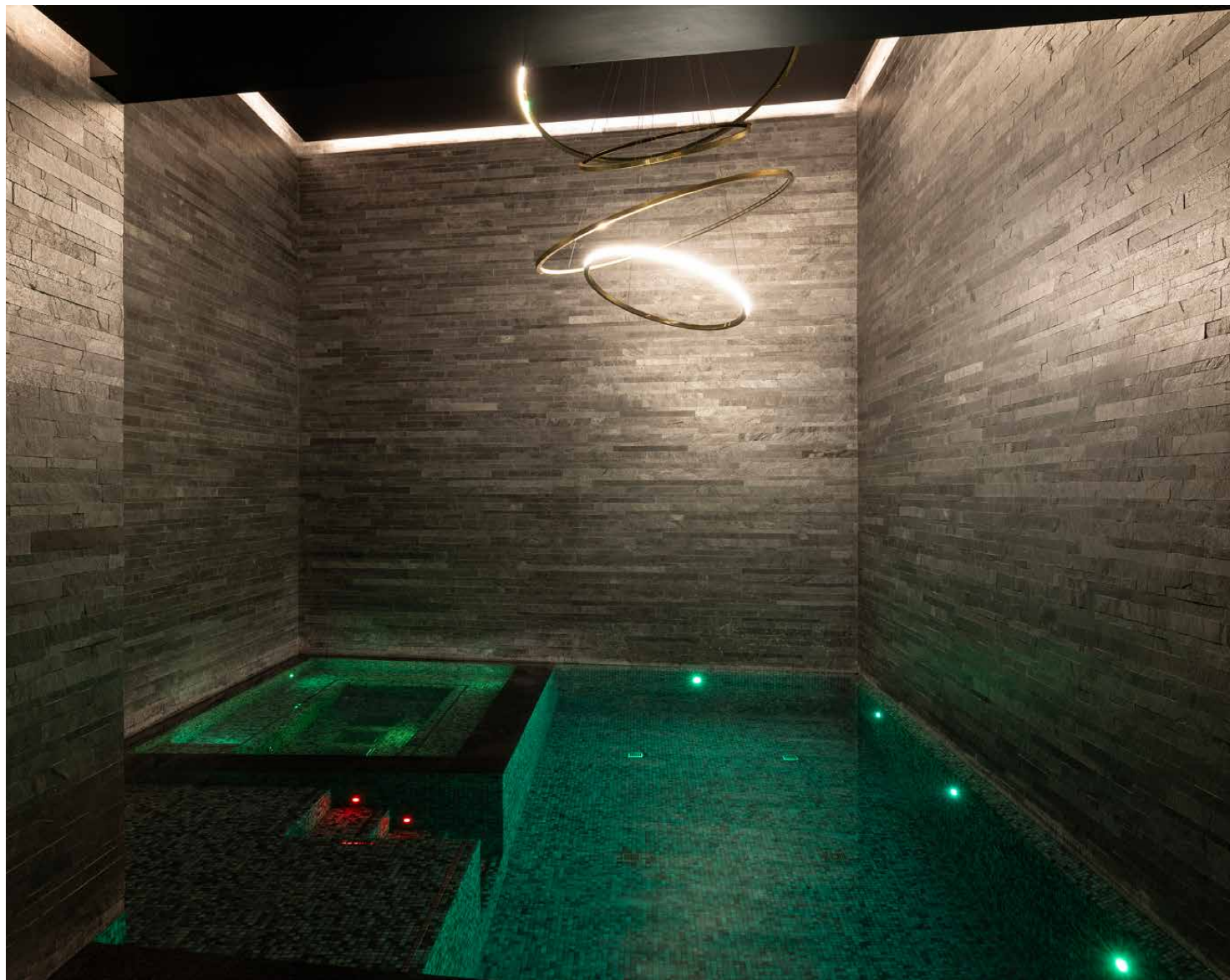






Wellness at home

It's easy to prioritise wellness at Brompton Square, with the entire lower-ground floor dedicated to a spa-style set up. Work up a sweat with a session in the fully-equipped gym before cooling off in the swimming pool. Complete an evening unwinding in the sauna or jacuzzi.







Outdoor spaces

From morning coffees to evening sundowners, make the most of London's warmer months across the balconies, a raised garden terrace and a rooftop terrace with a kitchenette.



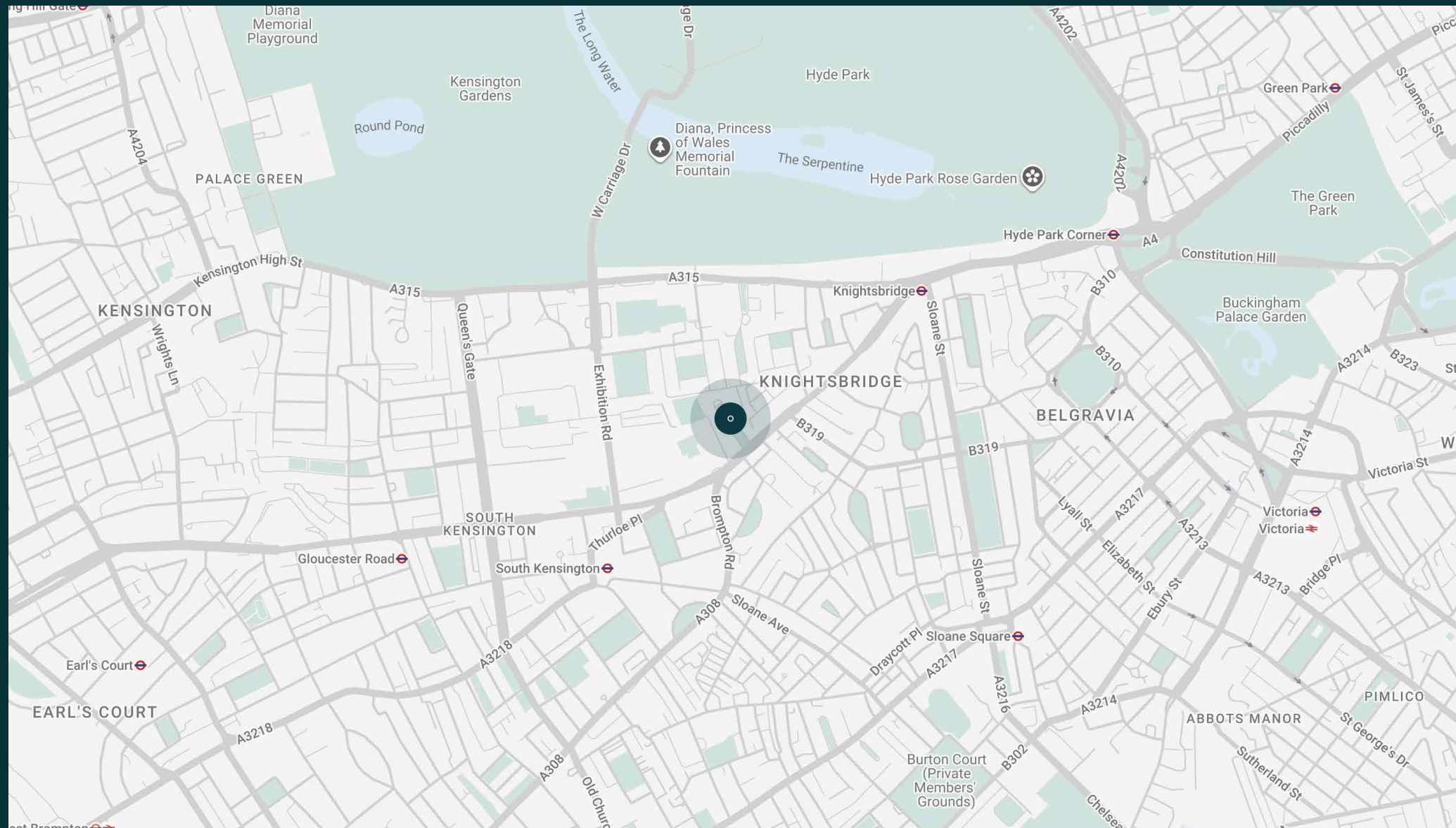


The neighbourhood

Nestled in the heart of London's prestigious Knightsbridge district, Brompton Square has enviable access to the area's best luxury shopping, fine dining and cultural landmarks.

Just a short stroll away is Hyde Park, one of the capital's eight Royal Parks. Enjoy leisurely strolls, boating and swimming on the Serpentine Lake and horseback riding lessons. Whether you want to explore the treasures of Harrods and Harvey Nichols, or venture through the flagship designer stores along Brompton Road, this postcode is tailor-made for retail therapy. Spend a day hopping between the Victoria and Albert, Natural History and Science Museums, followed by food at Amaya, Gordon Ramsay's Pétrus or Dinner by Heston Blumenthal.





Property features

- Two formal reception rooms
- Contemporary kitchen
- Dining room and lounge
- Media room
- Principal bedroom suite with dressing room
- Five guest bedroom suites
- Study
- Passenger lift
- Double integrated garage
- Private garden
- Roof terrace
- Swimming pool
- Jacuzzi and sauna
- Home gym
- Access to communal gardens
- Royal Borough of Kensington & Chelsea

Approx. 5,569 sq ft / 517.4 sq m



Approx. Gross Internal Area = 5,569 sq ft / 517.4 sq m
 Garage = 353 sq ft / 32.8 sq m
 Total = 5,922 sq ft / 550.2 sq m
 (Including Lift & Excluding Void)

Floor plans are for illustrative purposes only and not to scale. Compliant with RICS code of measuring practice.

Guest & concierge services

Our concierge team are here to help guests settle in, seamlessly. Centre court tickets to Wimbledon, Premier League seats with the best views, Savile Row tailors on standby, or a private chef to cater to individual tastes – we aim to elevate every stay.

From the moment of booking with us, each guest has a single point of contact to finesse the details. Our statement spaces are just the starting point – to ensure everyone feels at home, our rates include:

-
- Weekly housekeeping
 - Flexible check-in/out
 - Luxury linens and Bamford toiletries
 - Legal compliance on all our homes
 - A personal welcome and arrival essentials
 - Unlimited access to guest services and tailored experiences
 - Professional inventory inspection before and after every stay
 - Access to a curated portfolio of sole agency properties





Please get in touch if you have any questions
or require any further information.

hello@domusstay.com

+44 (0)20 8168 8880

The property particulars are a guide not statements. Descriptions, photographs, and plans are for guidance only. The Property is offered "subject to contract and references". No warranties, representations, License or Tenancy is given by Domus Stay. Our full disclaimer together with trading names and our Privacy Policy is shown on our website

© Domus Stay 2025. All rights reserved.

