

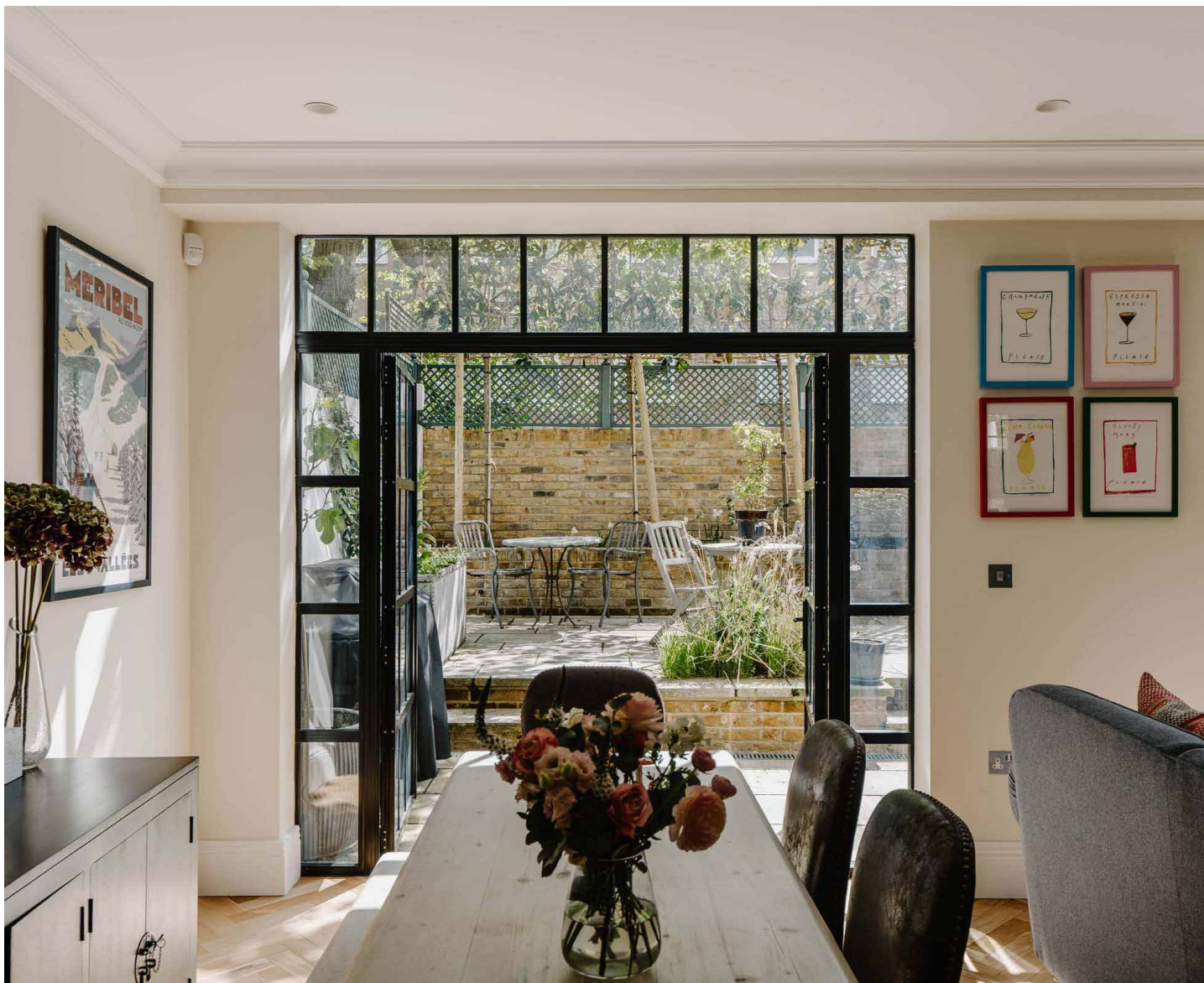
domus
stay.

Boyne Terrace Mews

HOLLAND PARK

3 Bedrooms, 2 Bathrooms
For 6 guests





In a quiet Holland Park mews, an uplifting feel is commanded in this interior-designed home.

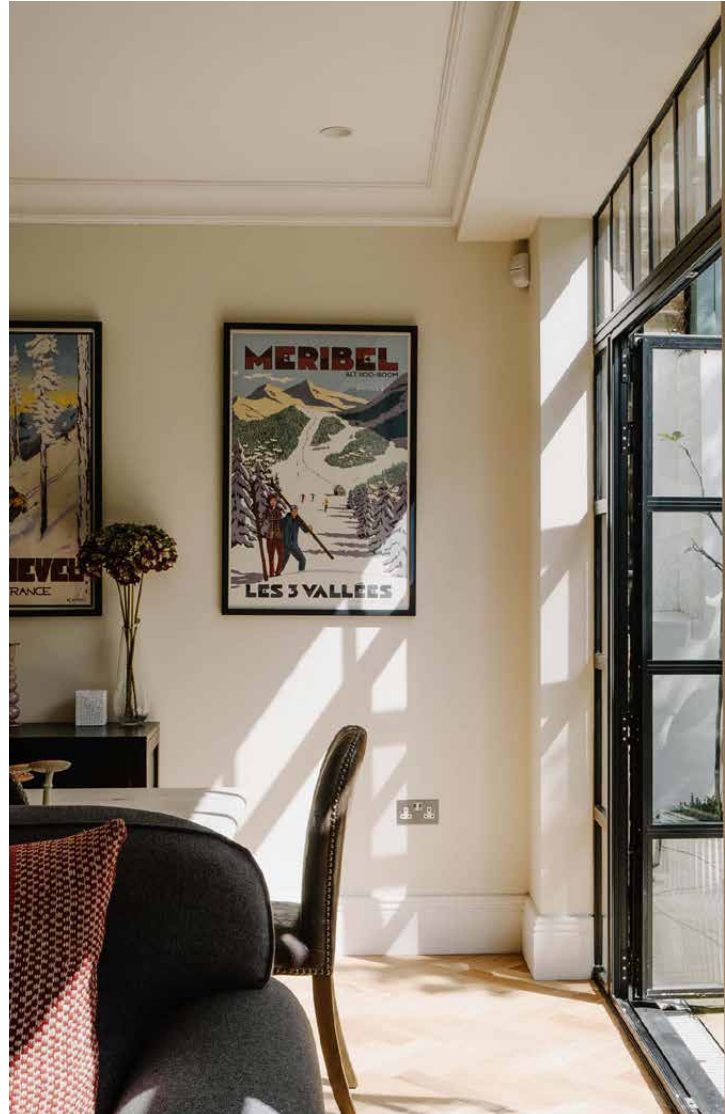
This three-bedroom mews house is a masterclass in eclectic elegance. Behind its charcoal-framed windows and classic stock brick façade lies a home alive with personality — a collaboration between the owners and design studio Cast, inspired by London institutions like 5 Hertford Street and Julie's. Across three floors, considered design meets playful sophistication: expect bold textures and curated artwork, light-filled interiors that open onto a private garden and individually-styled tranquil bedrooms.



Living spaces

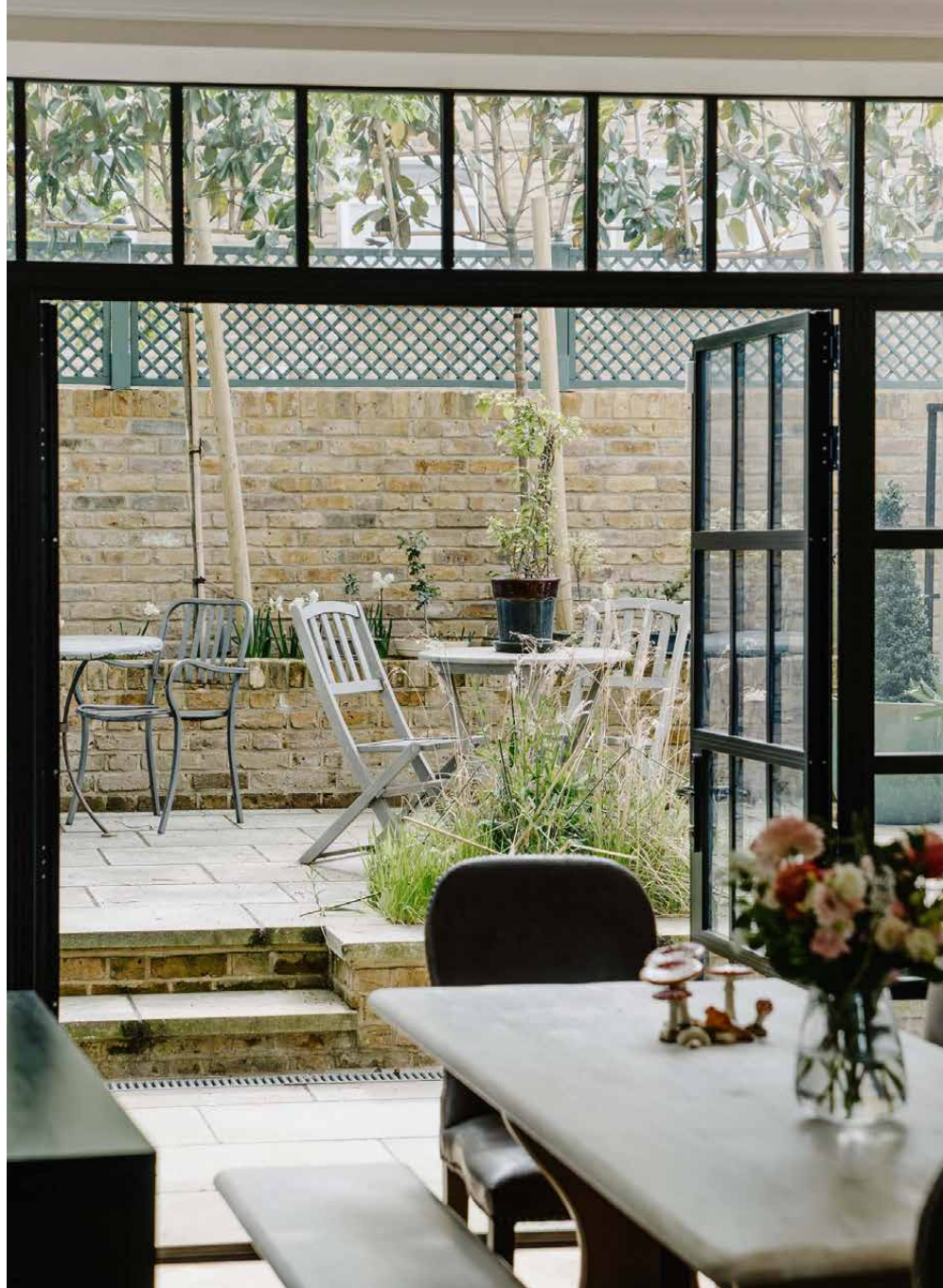
A striking herringbone floor sets the tone as you step inside, leading into an uplifting open-plan kitchen, dining and living area. Here, an inviting sofa is positioned in front of a television for cosy nights in. Upstairs, a second reception room offers a more formal retreat, with House of Hackney wallpaper, a jewel-toned velvet sofa and a wood burner beside a chic bar setup — the perfect setting for stylish entertaining.

Bespoke sage-green cabinetry and sleek marble countertops define the kitchen's polished aesthetic, brought to life by high-spec appliances and thoughtful details. Morning coffee is best enjoyed at the central island, while the dining area invites long, convivial meals beneath a soft canopy of natural light. Whether you're hosting friends or enjoying a quiet night in, this room adapts with ease.









“It’s a slice of serenity designed for summer lounging, morning coffee or alfresco drinks with friends.

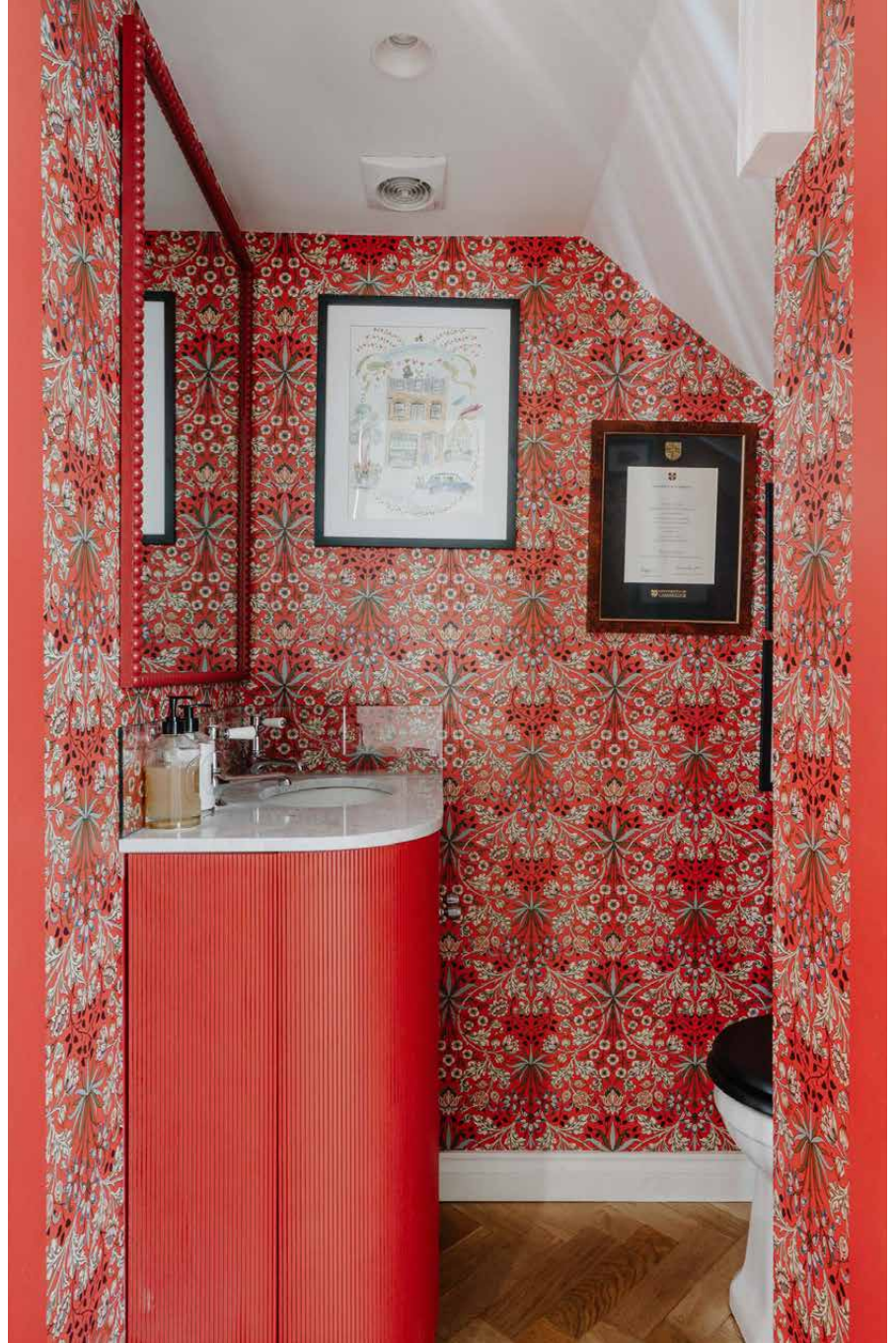






Bedrooms & Bathrooms

The principal bedroom is a sanctuary of soft tones, sash-filtered light and full-height wardrobes. The en suite bathroom is equally refined, featuring oversized marble tiles, a dual vanity, rainfall shower and spacious bathtub in a wet-room configuration. On the top floor, there's a calming guest room and versatile study or occasional bedroom, both served by a modish bathroom clad in bottle-green tiling. A bold ground-floor WC, complete with pillar-box red walls and bespoke wallpaper, adds a playful note.









Outdoor space

Crittall doors open onto a charming private garden — a tranquil spot with leafy pot plants and a greenhouse tucked at the rear. It's a slice of serenity designed for summer lounging, morning coffee or alfresco drinks with friends.

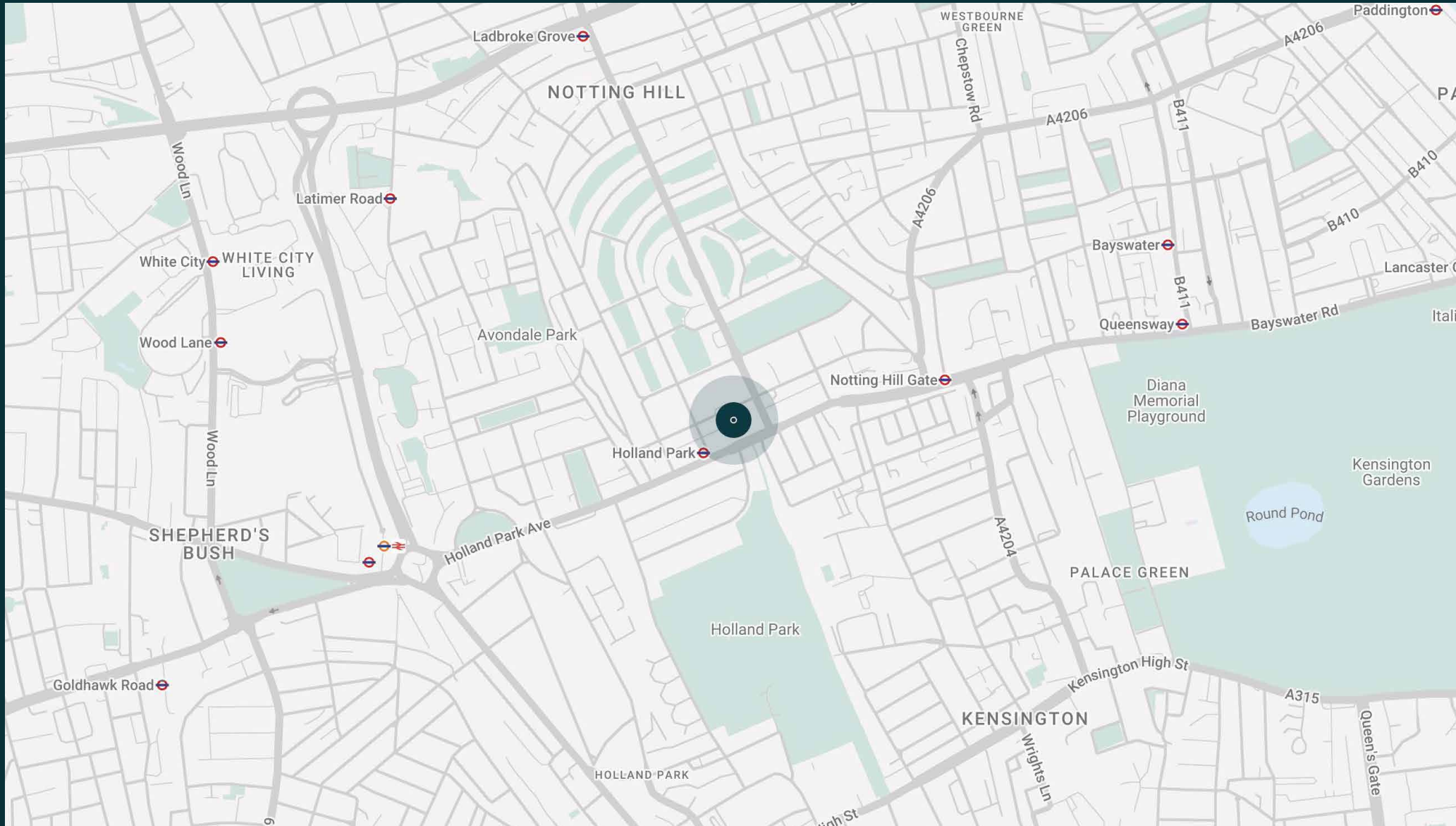


The neighbourhood

Tucked away in a peaceful mews street just moments from Holland Park Avenue, Boyme Terrace Mews is the perfect springboard to this sophisticated West London neighbourhood.

Source organic groceries from Supermarket of Dreams and Lidgates, then sweet treats at Buns from Home and Melt Chocolates. The eponymous Holland Park is a tranquil spot for long strolls around the Dutch and Kyoto Gardens, followed by an exhibition at The Design Museum. For world-class shopping, there's The Village at Westfield Shopping Centre, or Portobello Road's numerous vintage boutiques. Special occasions call Six Portland Road, Casa Cruz or Julie's for nights of fine dining.



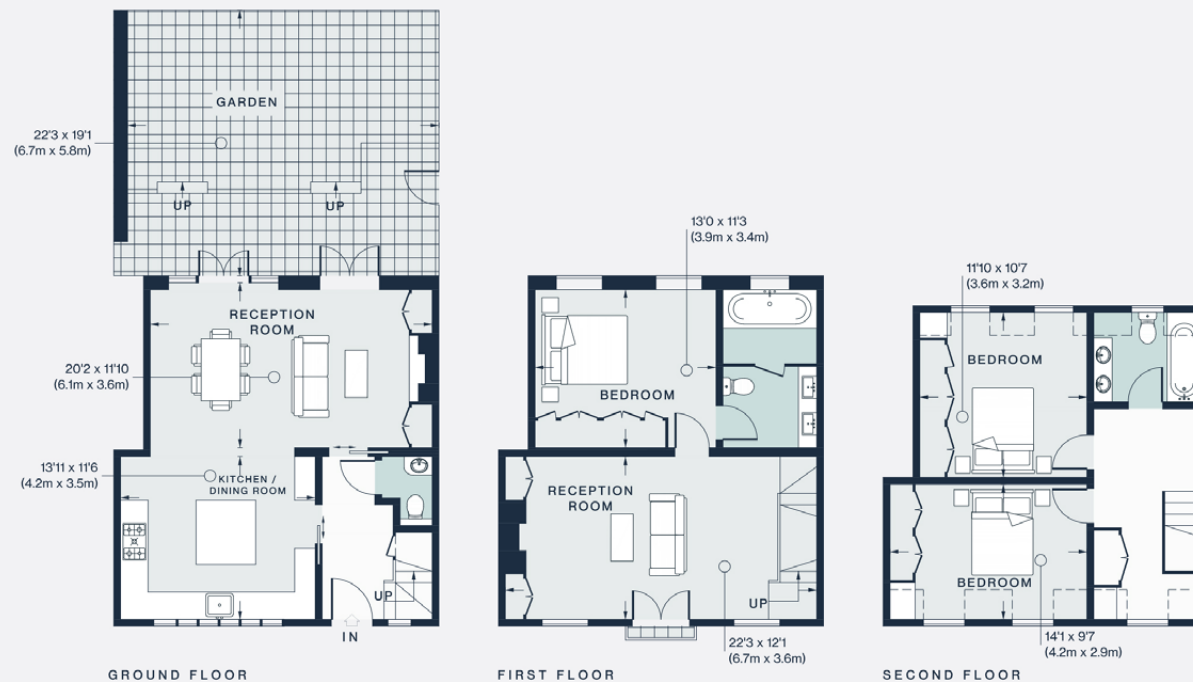




Property features

- Open-plan kitchen, dining and living room
- Formal reception room
- Principal bedroom suite
- Two guest bedrooms
- One further bathroom
- Additional WC
- Private garden
- Royal Borough of Kensington & Chelsea

Approx. 1,087 sq ft / 101 sq m



Approx. Gross Internal Area = 1444 sq ft / 134.2 sq m

Floor plans are for illustrative purposes only and not to scale. Compliant with RICS code of measuring practice.
Prepared for Domus Stay. Copyright © All Rights Reserved.

Guest & concierge services

Our concierge team are here to help guests settle in, seamlessly. Centre court tickets to Wimbledon, Premier League seats with the best views, Savile Row tailors on standby, or a private chef to cater to individual tastes – we aim to elevate every stay.

From the moment of booking with us, each guest has a single point of contact to finesse the details. Our statement spaces are just the starting point – to ensure everyone feels at home, our rates include:

- Weekly housekeeping
- Flexible check-in/out
- Luxury linens and Bamford toiletries
- Legal compliance on all our homes
- A personal welcome and arrival essentials
- Unlimited access to guest services and tailored experiences
- Professional inventory inspection before and after every stay
- Access to a curated portfolio of sole agency properties



domus stay.

Please get in touch if you have any questions
or require any further information.

hello@domusstay.com

+44 (0)20 8168 8880

The property particulars are a guide not statements. Descriptions, photographs, and plans are for guidance only. The Property is offered "subject to contract and references". No warranties, representations, License or Tenancy is given by Domus Stay. Our full disclaimer together with trading names and our Privacy Policy is shown on our website

© Domus Stay 2025. All rights reserved.

