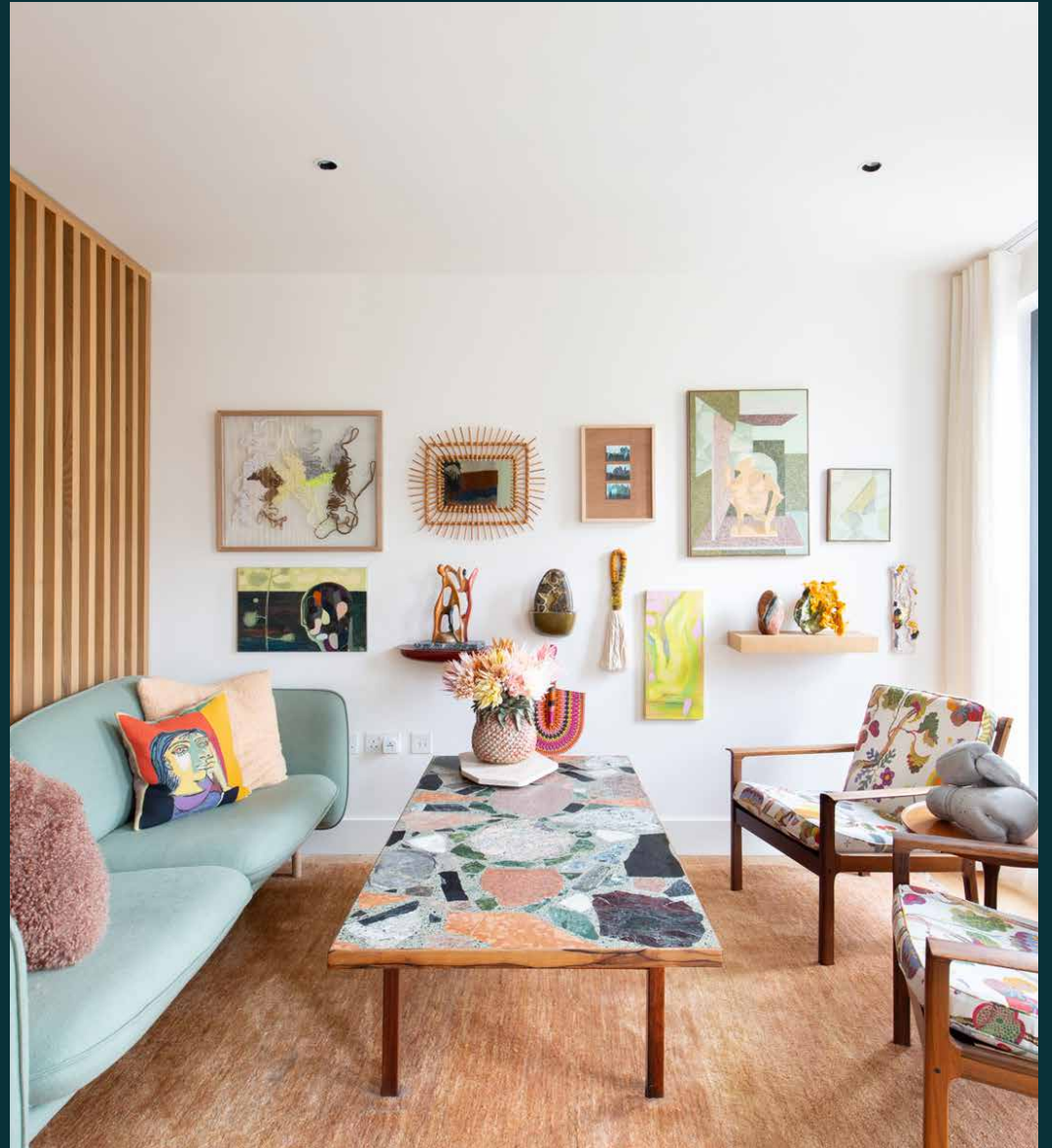


domus
stay.

Bonchurch Road

NOTTING HILL W11

1 Bedroom, 1 Bathroom
For 2 guests





A work-of-art west London home, this creative one-bedroom apartment is as uplifting as it is grounding.

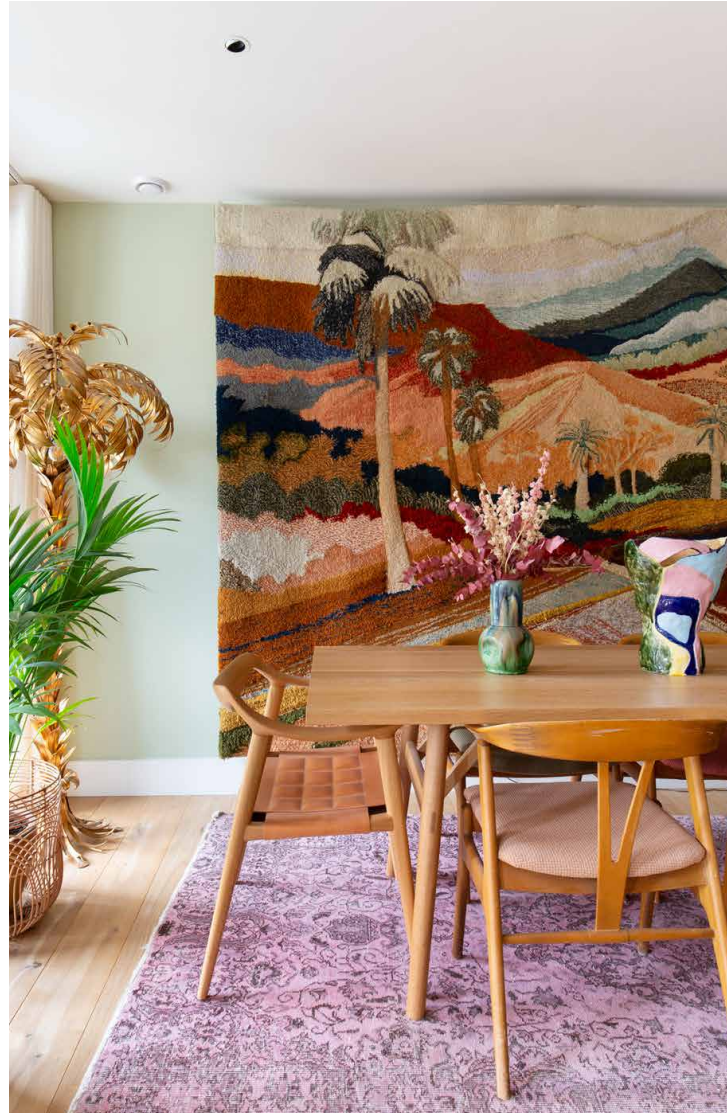
On the third floor of a new-build apartment block, this one-bedroom home is all soft light and playful interiors. The colourful touch of its creative owner manifests through carefully curated artwork and sculptural furnishings; think Frank Lloyd Wright, Hans Kogl and Andy Warhol.



The living space

As you enter, a hallway leads to an open-plan living area, where materials and textures subtly carve zones; preparing small plates on sleek Carrara marble counters in the kitchen, sharing them at the dining table backdropped by one-of-a-kind tapestries, followed by digestifs on the sofas tucked behind a wood-panelled divider. Come golden hour, watch as the glow of the sunset floods in through full-length doors.

Note the attention to detail in this apartment. The way Nordic design is grounded by vintage accessories. How polished surfaces contrast bold tones.







“When people come into my home, they smile. That’s what colour does – at an unconscious level. We react to colour in a strong and positive way.”

MAGNUS THORUD, HOMEOWNER





Bedroom & bathroom

The bedroom shows that you needn't sacrifice character for a sense of tranquillity. Yes, the palette is pared-back but vibrant wall art amps up the mood. The bathroom is thoroughly modern, echoing the Carrara marble counters in the kitchen. It's fitted with a dual vanity and a shower bath.

In the warmer months, open up the full-length doors in the reception room to let the breeze brush across the designer décor, or sip a glass of Merlot on the west-facing balcony.

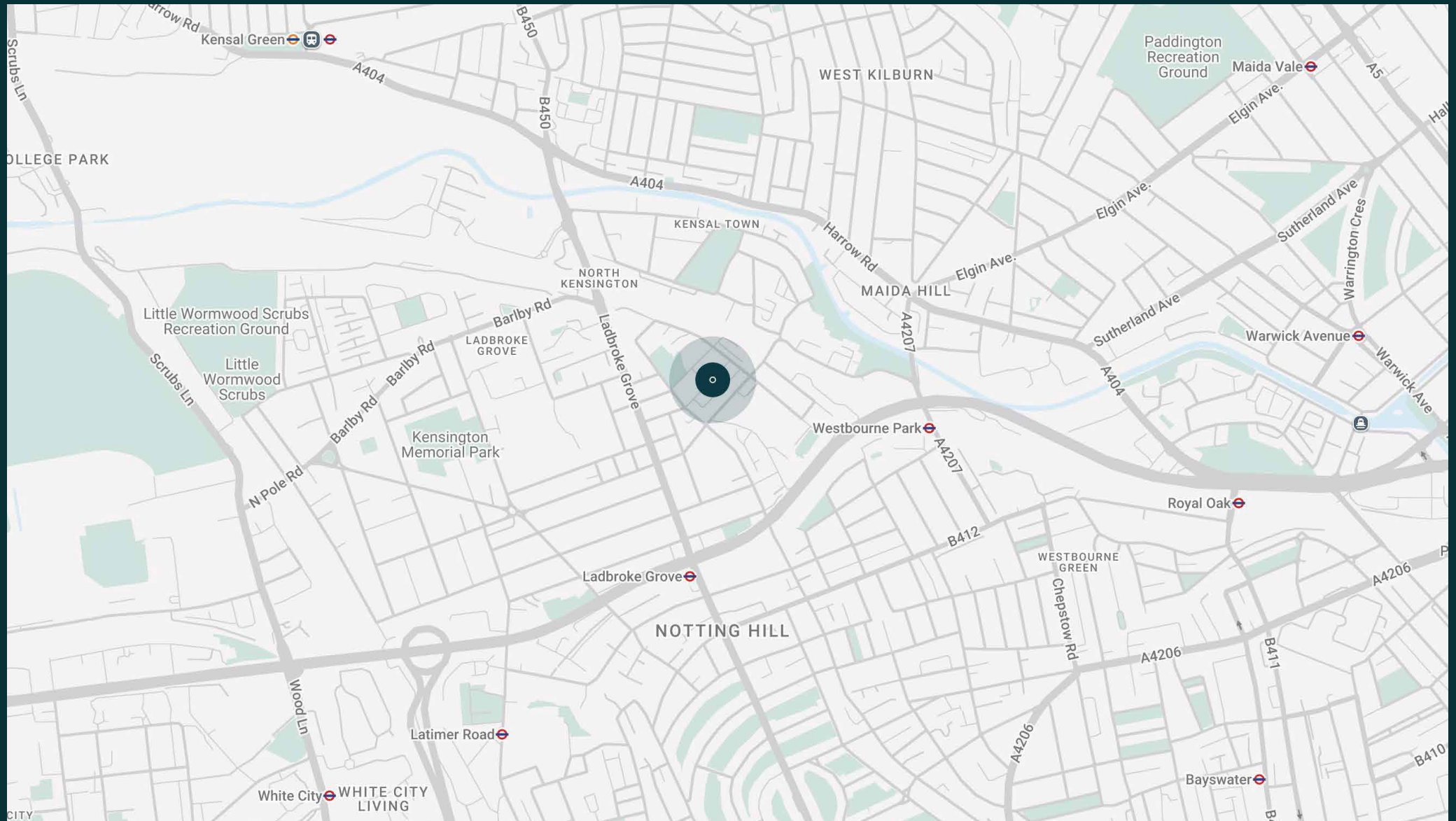


The neighbourhood

Both a stepping-stone to and a breather from Portobello Road, Bonchurch Road is around the corner from its vintage stalls and dynamic energy.

Stop by Layla's Bakery on your doorstep for a coffee and buttery pastry in the morning. Stretch your legs and stroll along the Grand Union Canal or down to Westbourne Grove and browse its independent boutiques. Stop by Granger & Co or Ottolenghi for lunch. Feeling thirsty? Try the legendary pub The Cow and be back home in 15.





Property features

- Open-plan kitchen and reception room
- Principal bedroom
- Family bathroom
- Private balcony
- Juliet balconies
- Royal Borough of Kensington and Chelsea

Approx. 59.4 sq m / 639 sq ft



Approx. Gross Internal Area = 639 sq ft / 59.4 sq m

Floor plans are for illustrative purposes only and not to scale. Compliant with RICS code of measuring practice.
Prepared for Domus Stay. Copyright © All Rights Reserved.

Guest & concierge services

Our concierge team are here to help guests settle in, seamlessly. Centre court tickets to Wimbledon, Premier League seats with the best views, Savile Row tailors on standby, or a private chef to cater to individual tastes – we aim to elevate every stay.

From the moment of booking with us, each guest has a single point of contact to finesse the details. Our statement spaces are just the starting point – to ensure everyone feels at home, our rates include:

-
- Weekly housekeeping
 - Flexible check-in/out
 - Luxury linens and Bamford toiletries
 - Legal compliance on all our homes
 - A personal welcome and arrival essentials
 - Unlimited access to guest services and tailored experiences
 - Professional inventory inspection before and after every stay
 - Access to a curated portfolio of sole agency properties





Please get in touch if you have any questions
or require any further information.

hello@domusstay.com

+44 (0)20 8168 8880

The property particulars are a guide not statements. Descriptions, photographs, and plans are for guidance only. The Property is offered "subject to contract and references". No warranties, representations, License or Tenancy is given by Domus Stay. Our full disclaimer together with trading names and our Privacy Policy is shown on our website

© Domus Stay 2025. All rights reserved.

