

domus  
stay.

---

## Ashlar Park

THE COTSWOLDS & COUNTRY

10 Bedrooms, 8 Bathrooms  
For 20 guests

---





## A 10-bedroom private Cotswolds estate to rent that pairs historic references with contemporary craftsmanship.

Conceived by Yiangou Architects, this 10,000-square-foot manor is a remarkable reinterpretation of a traditional country house.

Constructed from locally-sourced ashlar and stone from the estate's own quarry, Ashlar Park's commanding presence is complemented by interiors that take you back in time: bold colours, antique furniture and captivating oil portraits. Outside, find a heated pool, flowering gardens, full-size tennis court and a tranquil swimming lake that mirrors the sky.









# The living spaces

A grand entrance hall sets the tone here, its sweeping stone floors, intricate cornicing and wide double doors leading to a central staircase bathed in light from a glazed cupola above. Just off the hall, the double reception room emanates warmth, its bright yellow walls enlivened by floor-to-ceiling French doors that open to the gardens beyond. Ornate columns, decorative plasterwork and antique furniture – including a conversation seat and games table – infuse the room with heritage charm.















Set against bold red walls, the drawing room is furnished with patterned sofas and a television – perfect for relaxed evenings and film nights. For pre-dinner cocktails and later nightcaps, there's also a home bar. Quieter moments unfold in the library, where dark timber bookcases, a traditional fireplace and muted blue walls await.





# Kitchen & dining

Equipped with a full team of chefs and catering staff, mealtimes always carry a sense of occasion at Ashlar Park. The kitchen is set with stainless-steel worktops, clean-line cabinetry and state-of-the-art appliances suited to all manner of culinary creativity.

The dining room leans formal, with classic wall panelling and a collection of oil portraits in gilded frames. At its centre, a polished wooden dining table anchors the space, setting the scene for conviviality. Outside, a terrace overlooks the landscaped gardens, for al fresco entertaining during the warmer months.













## Bedrooms & bathrooms

Each bedroom has been individually curated, with palettes ranging from deep cobalt and serene teal to soft, verdant green. The first floor comprises five bedrooms, including a principal suite with a spa-inspired en suite, alongside four guest bedrooms, each thoughtfully outfitted with its own bathroom. Upstairs, five further bedrooms – two with en suites – continue the same meticulous approach to design, where fabrics, furnishings, artwork and lighting create elegant, restful spaces.



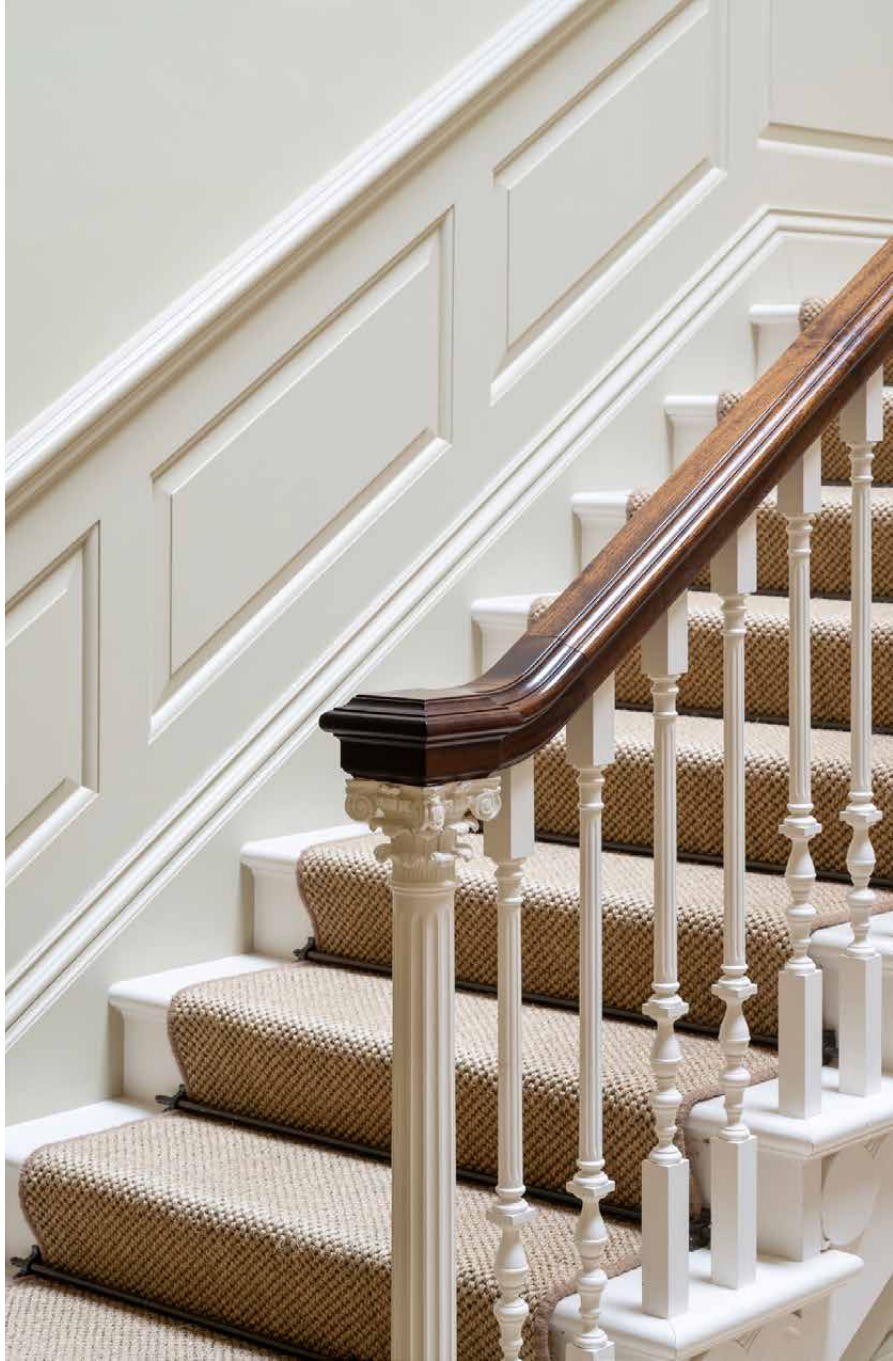






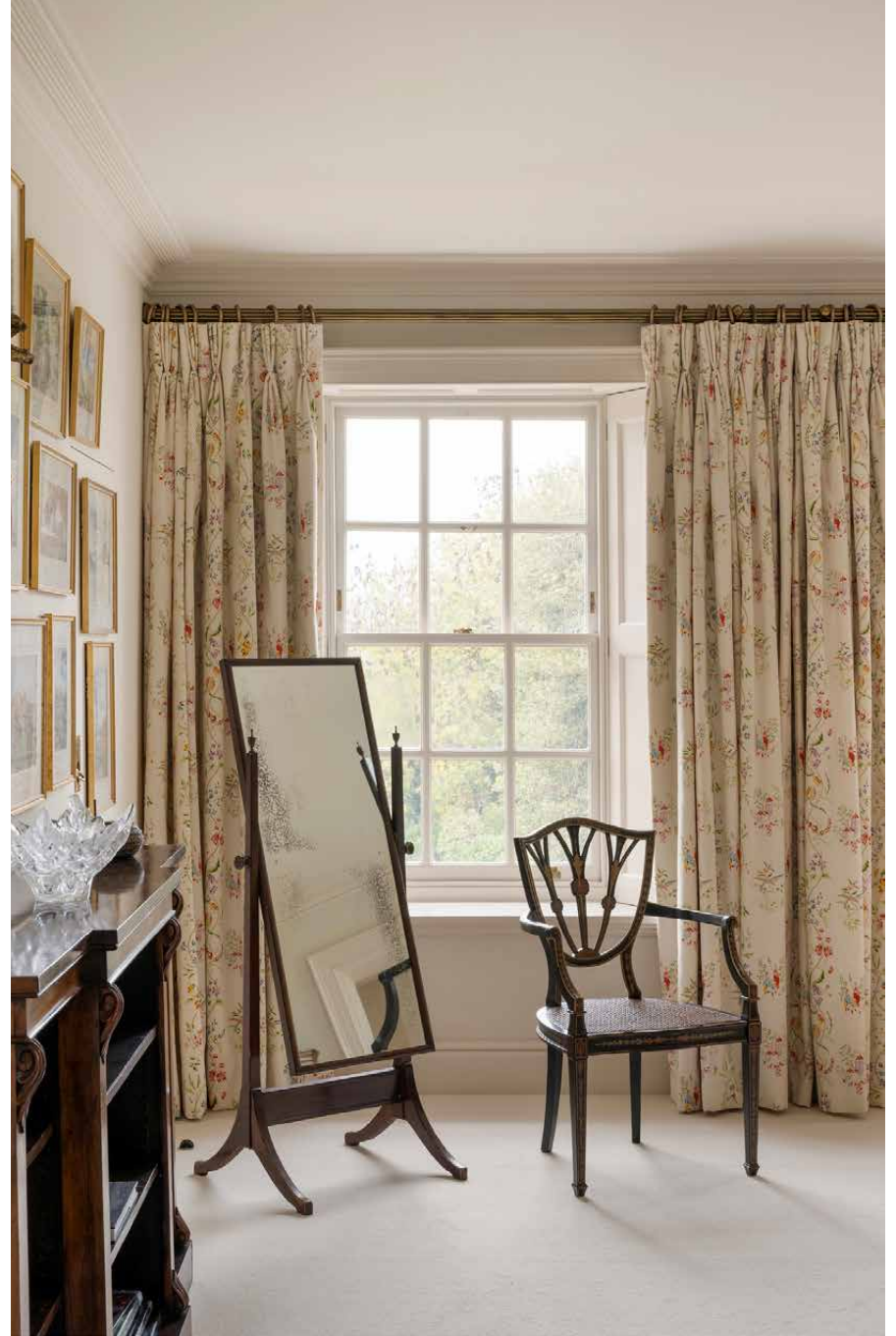






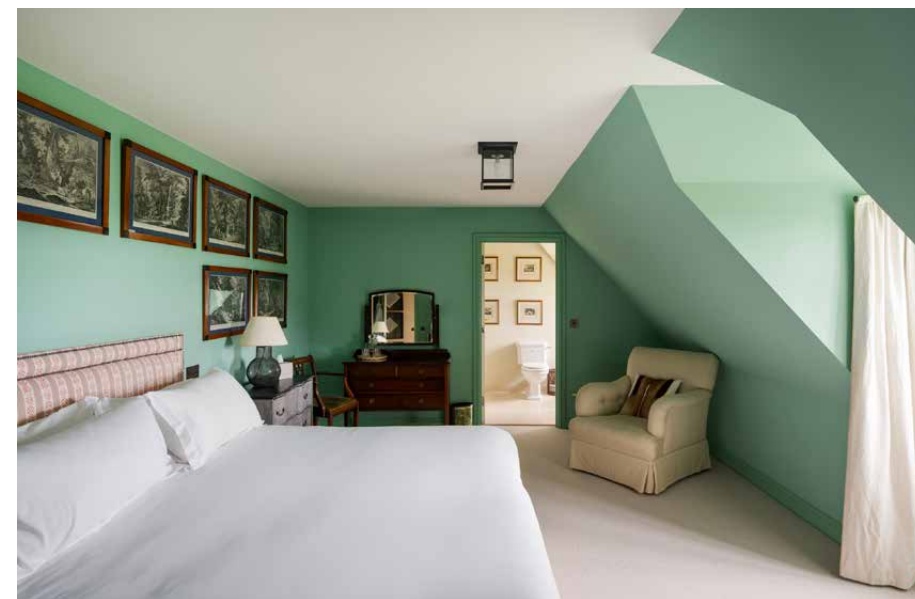




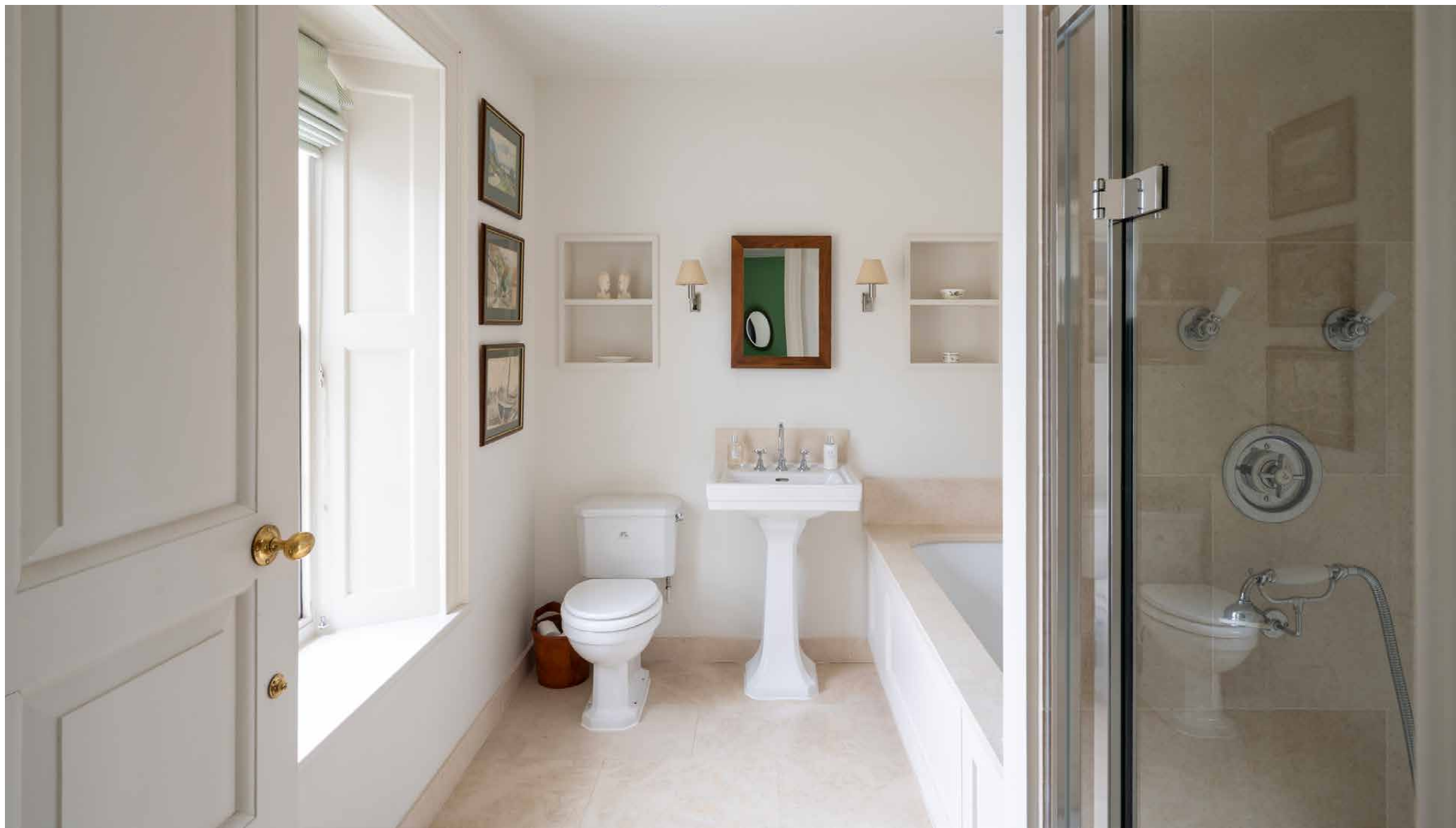


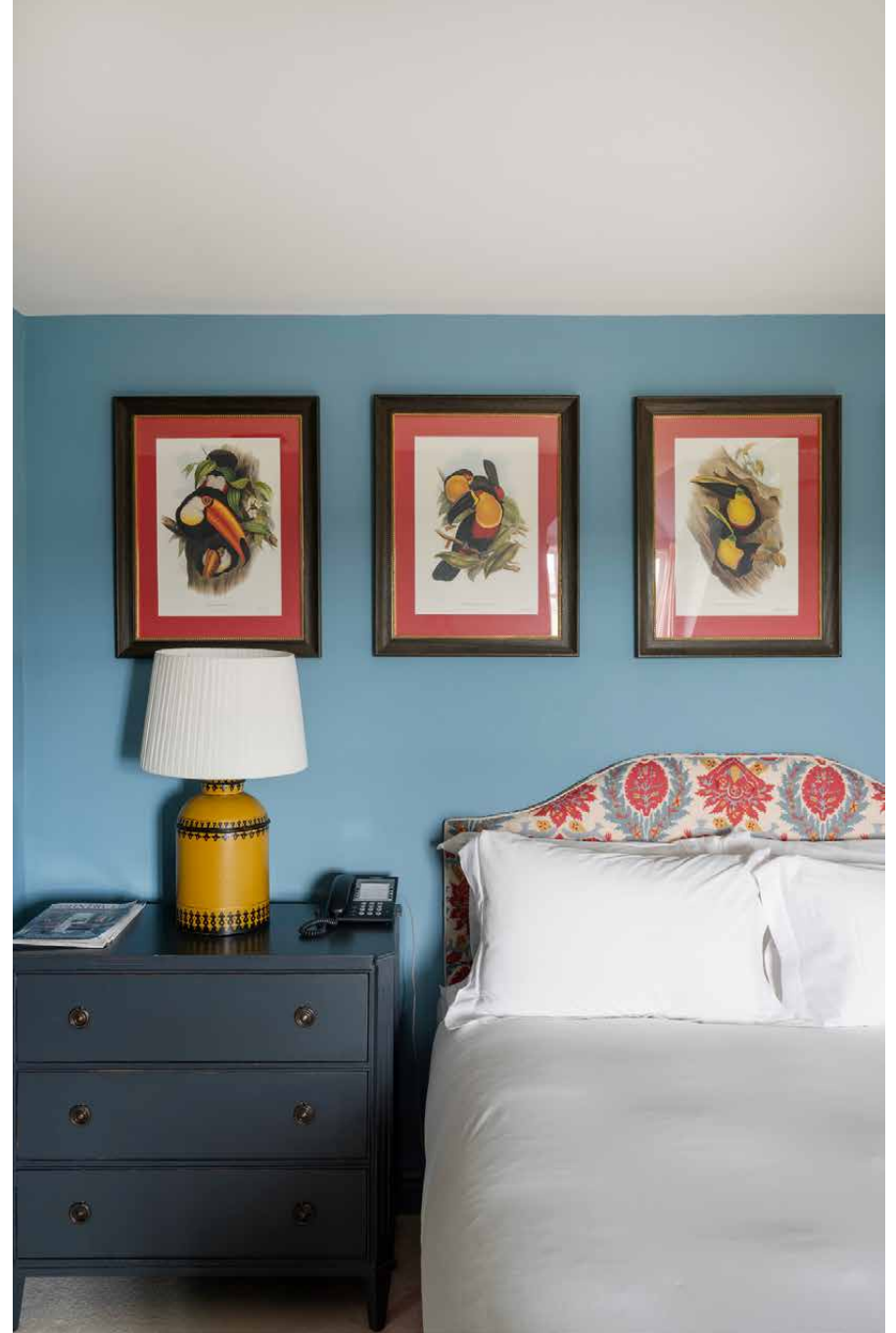
















## Outdoor space

Embrace the rhythm of countryside living with sweeping views across the rolling Cotswold hills. Around the house, artfully composed gardens unfold in a sequence of serene outdoor spaces: a heated swimming pool, hot tub and sauna framed by sculpted topiary, floral borders alive with colour and fragrance, and a full-size tennis court for leisurely afternoons. Beyond, a tranquil lake – its glassy surface reflecting the changing sky – offers an enchanting setting for summertime swims.

# The surroundings

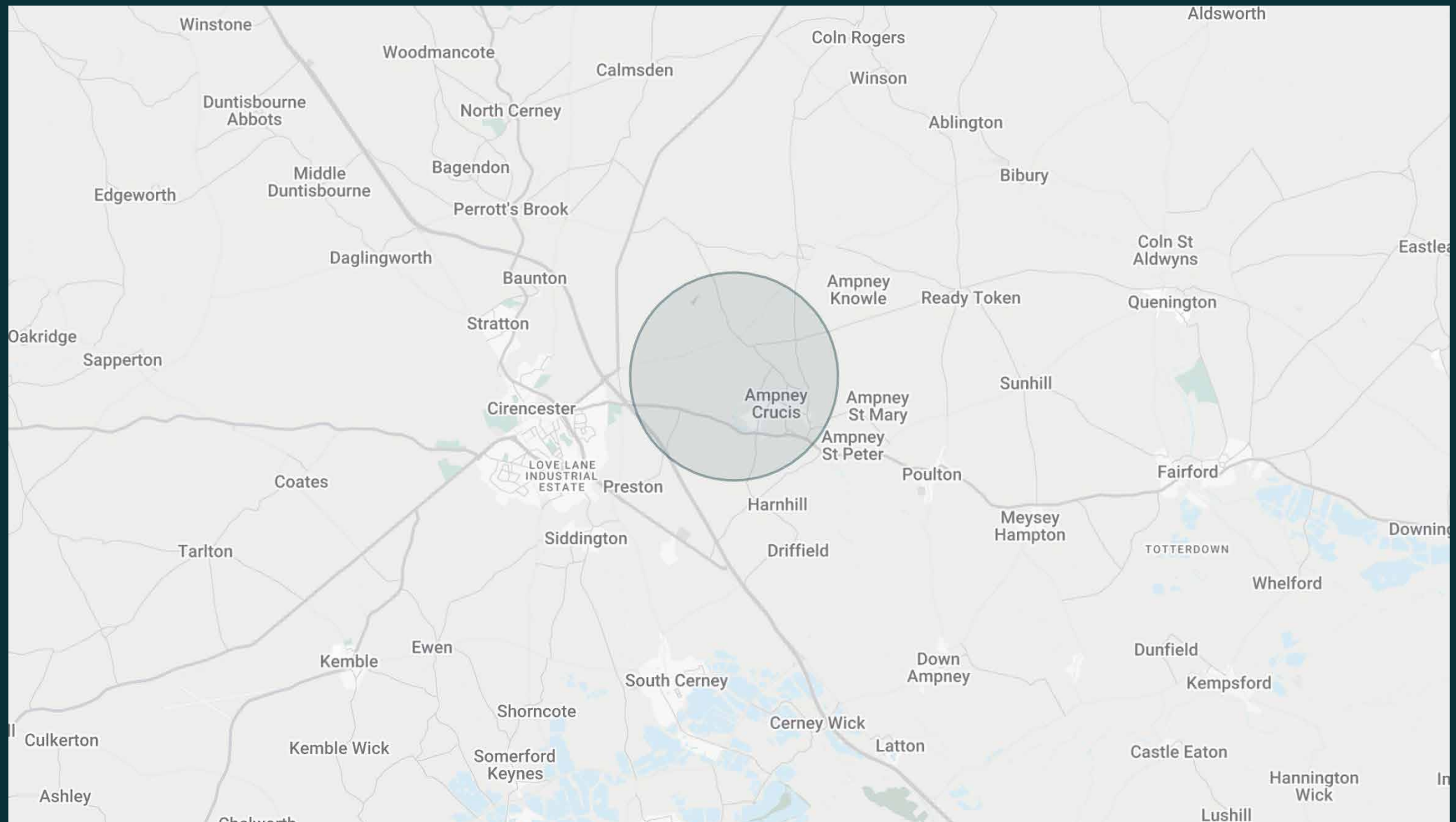
Nestled in the heart of the Cotswolds, Ashlar Park is surrounded by honey-stone cottages, winding lanes and a historic church. Just 10 minutes away, Bibury enchants with celebrated heritage architecture, tranquil countryside walks and one of Britain's oldest working trout farms.

An eight-minute drive brings you to Cirencester – the Cotswolds' historic Roman town, which remains a vibrant cultural hub. Its Charter Market, held every Monday and Friday, offers organic produce and artisan delicacies, while the Barn Theatre presents a lively programme of performances for arts enthusiasts. For sporting pursuits, Cheltenham Racecourse is within easy reach, and polo aficionados can enjoy matches at the Cirencester and Beaufort Polo Clubs.

Also nearby, the historic market town of Fairford hosts the Royal International Air Tattoo each summer, drawing aviation enthusiasts from across the globe, while Chedworth Villa invites exploration of a Roman-era country house. Stow-on-the-Wold offers charming antique shops and tea rooms, while a visit to Daylesford Farm promises indulgence with its farm-to-table restaurant and Bamford Spa treatments.







# Property features

- Entrance hall
- Double reception room
- Formal dining room
- Contemporary kitchen
- Drawing room
- Library
- 10 bedrooms
- Eight bathrooms
- Heated swimming pool
- Hot tub and sauna
- Tennis court
- Swimming lake
- Fully staffed

---

## What's included?

Approx. 200 acres

Fully staffed including housekeeping and live-in chefs

Customisable amenities and activities available to add

Additional fees may apply for 14+ guests





# Guest & concierge services

Tennis coach or yoga instructor. Tables at renowned dining institutions, tickets to sporting or music events, and tours of the surrounding countryside: we're here to ensure stays are nothing short of exceptional. Working alongside our carefully selected partners, we put tastemakers and health and wellbeing experts at our guests' fingertips.

Our statement spaces are just the starting point – to ensure everyone feels at home, our rates include:

- 
- Housekeeping
  - Flexible check-in/out
  - Luxury linens and toiletries
  - Legal compliance on all our homes
  - A personal welcome and arrival essentials
  - Unlimited access to guest services and tailored experiences
  - Professional inspection before and after every stay
  - Complete discretion





Please get in touch if you have any questions  
or require any further information.

[hello@domusstay.com](mailto:hello@domusstay.com)

+44 (0)20 8168 8880

The property particulars are a guide not statements. Descriptions, photographs, and plans are for guidance only. The Property is offered "subject to contract and references". No warranties, representations, License or Tenancy is given by Domus Stay. Our full disclaimer together with trading names and our Privacy Policy is shown on our website

© Domus Stay 2025. All rights reserved.

