

domus  
stay.

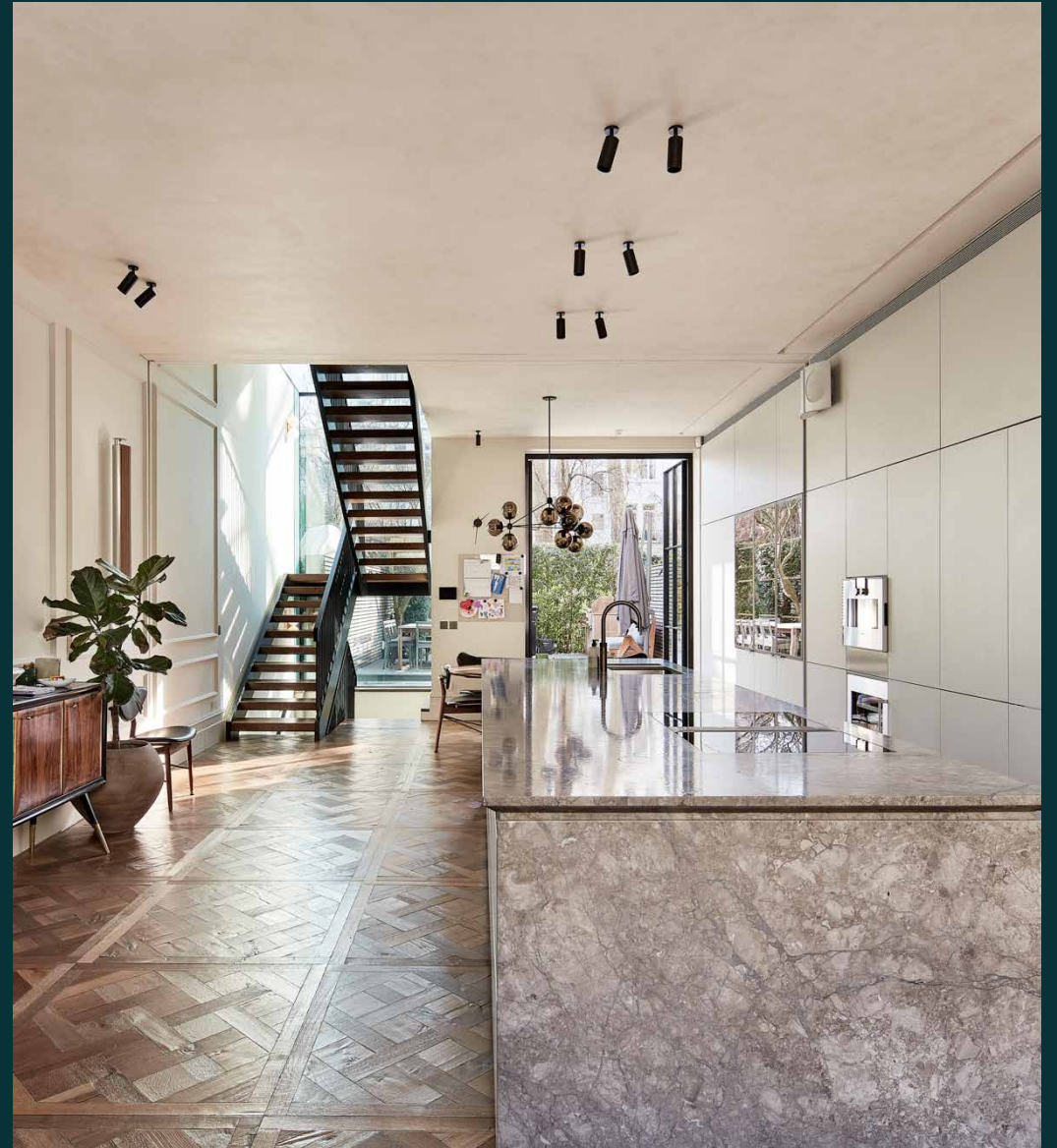
---

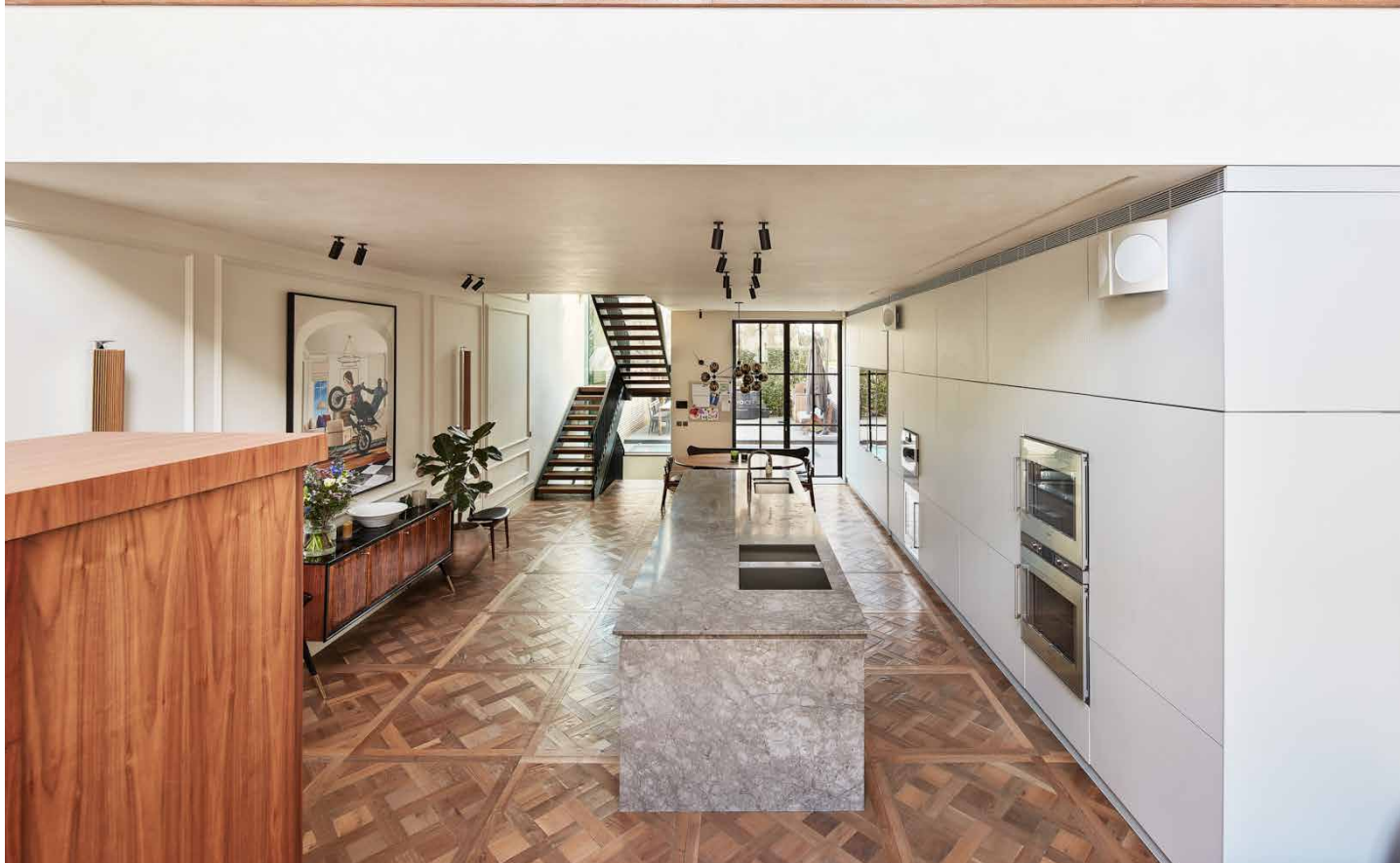
## Arundel Gardens

NOTTING HILL

6 Bedrooms, 5 Bathrooms  
For 12 guests

---

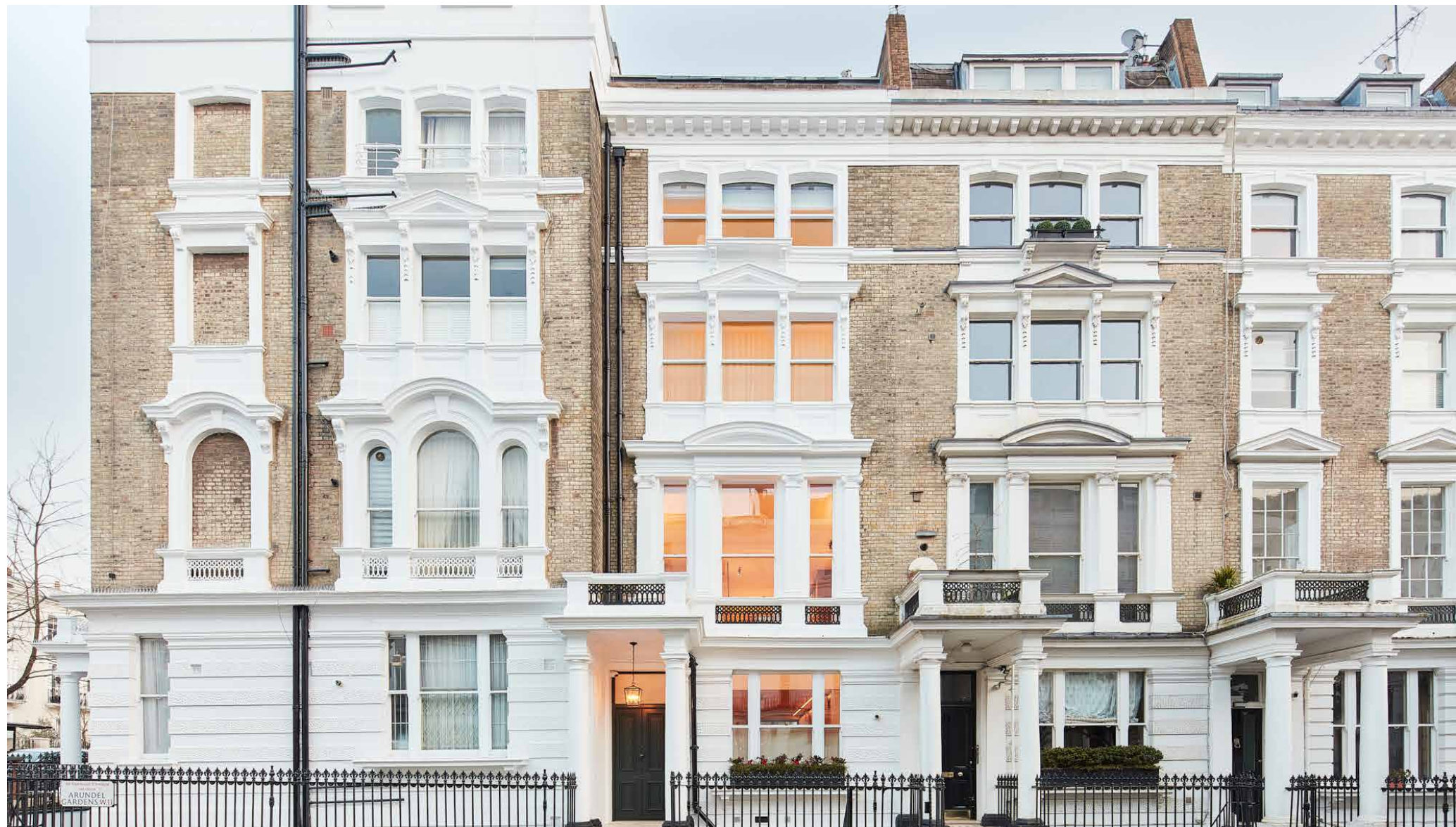




Impressive proportions and striking design define this six-bedroom Notting Hill house to rent.

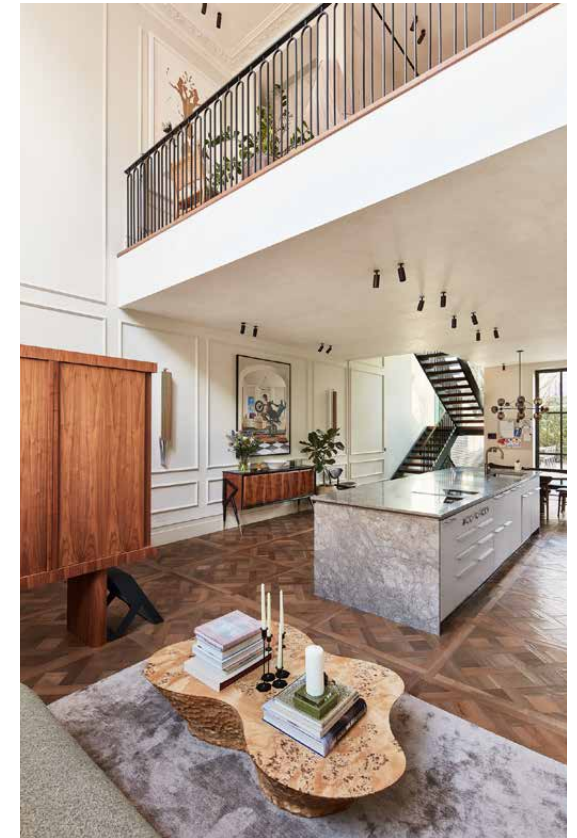
Overlooking a gated garden square, this six-bedroom townhouse is quintessential Notting Hill. Set over six generous floors, it brings together period grandeur and modern innovation – tailored for elegant gatherings, quiet moments and everything in between.





## Kitchen & dining

The kitchen has been imagined for streamlined culinary activity, with a glossy marble island, seamless rows of cabinetry, high-tech Gaggenau and Siemens appliances, two dishwashers and a large fridge-freezer. At the rear of the room, an informal breakfast area is backdropped by full-height Crittall windows that open to bring the outside in.







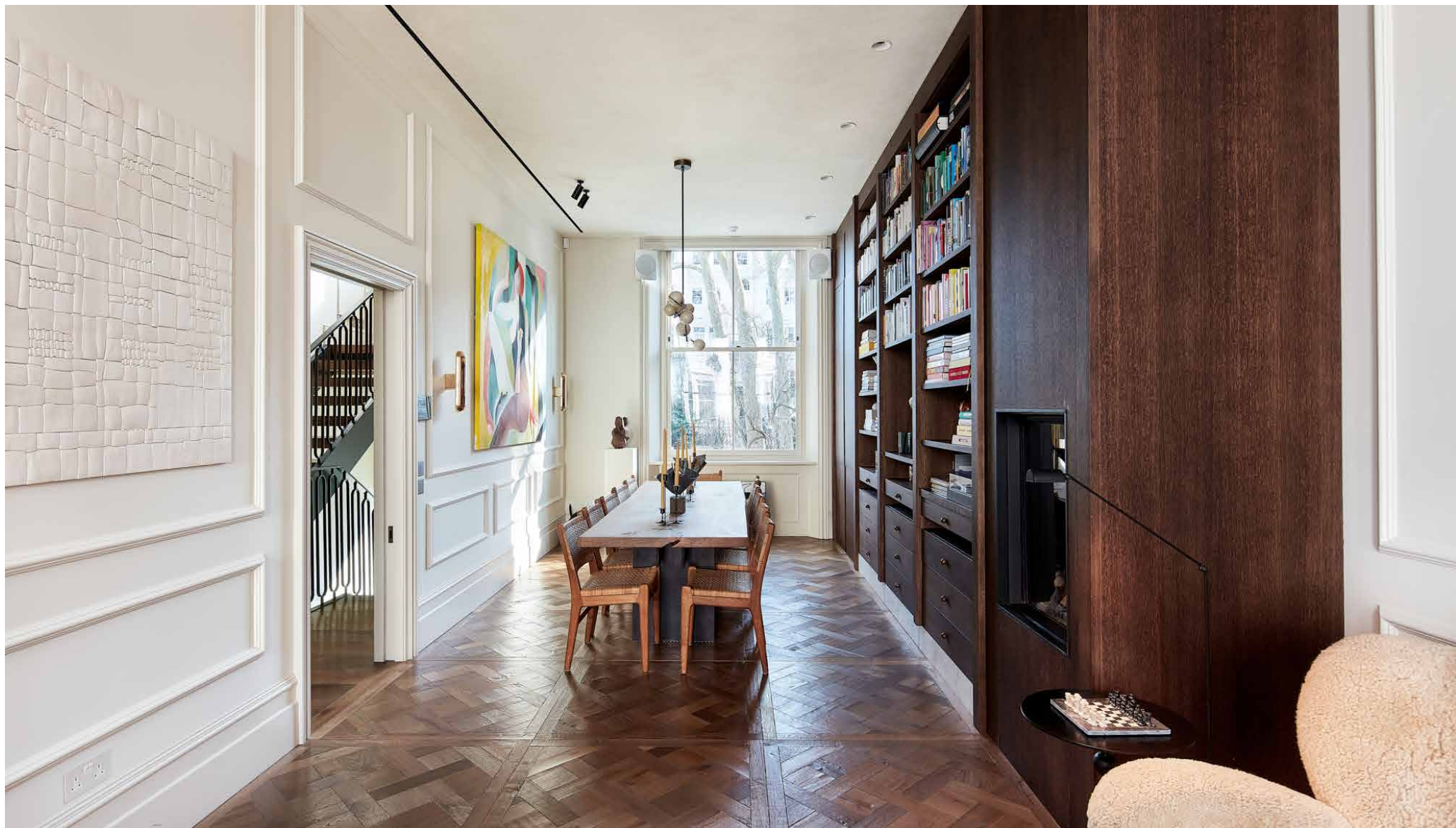


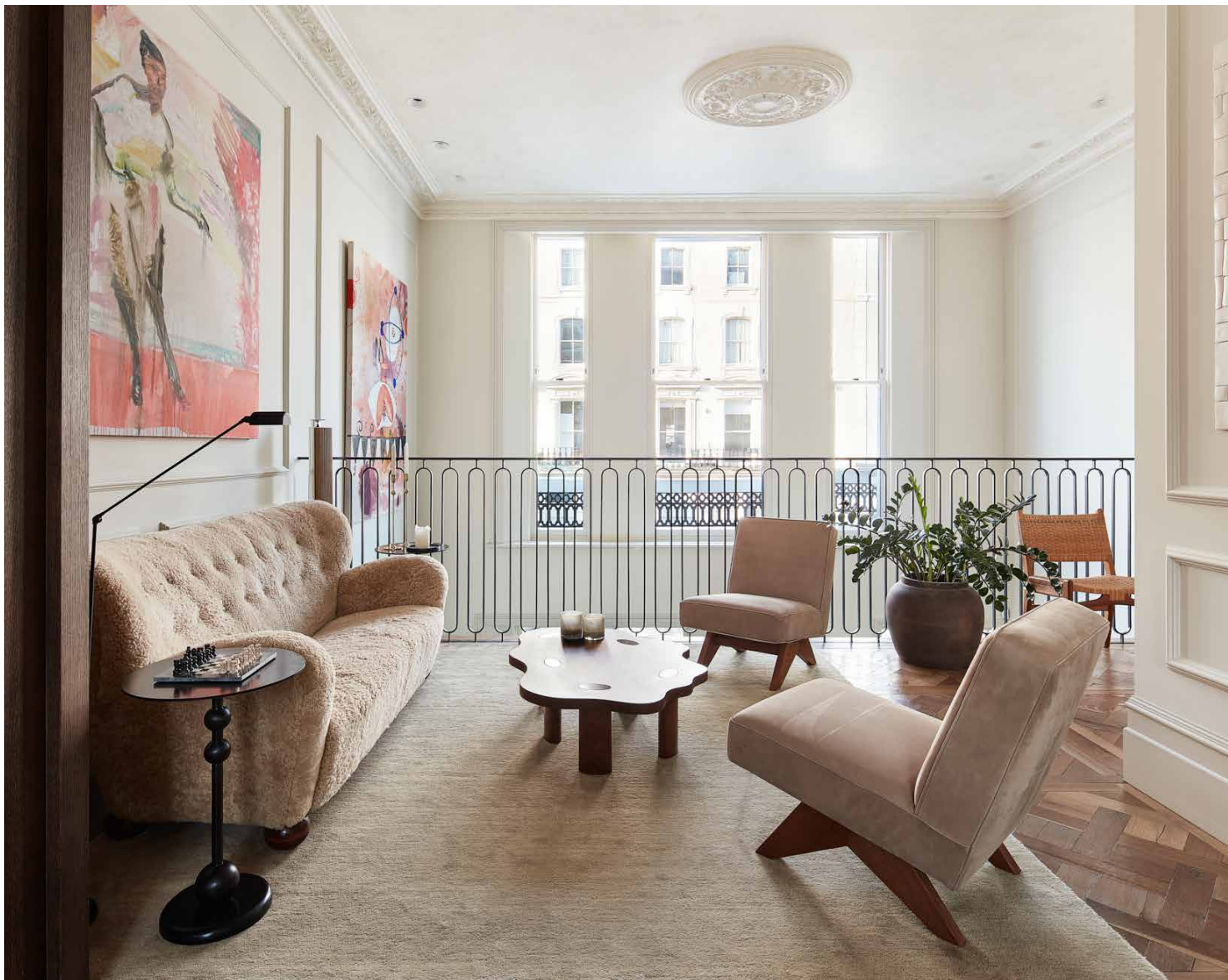










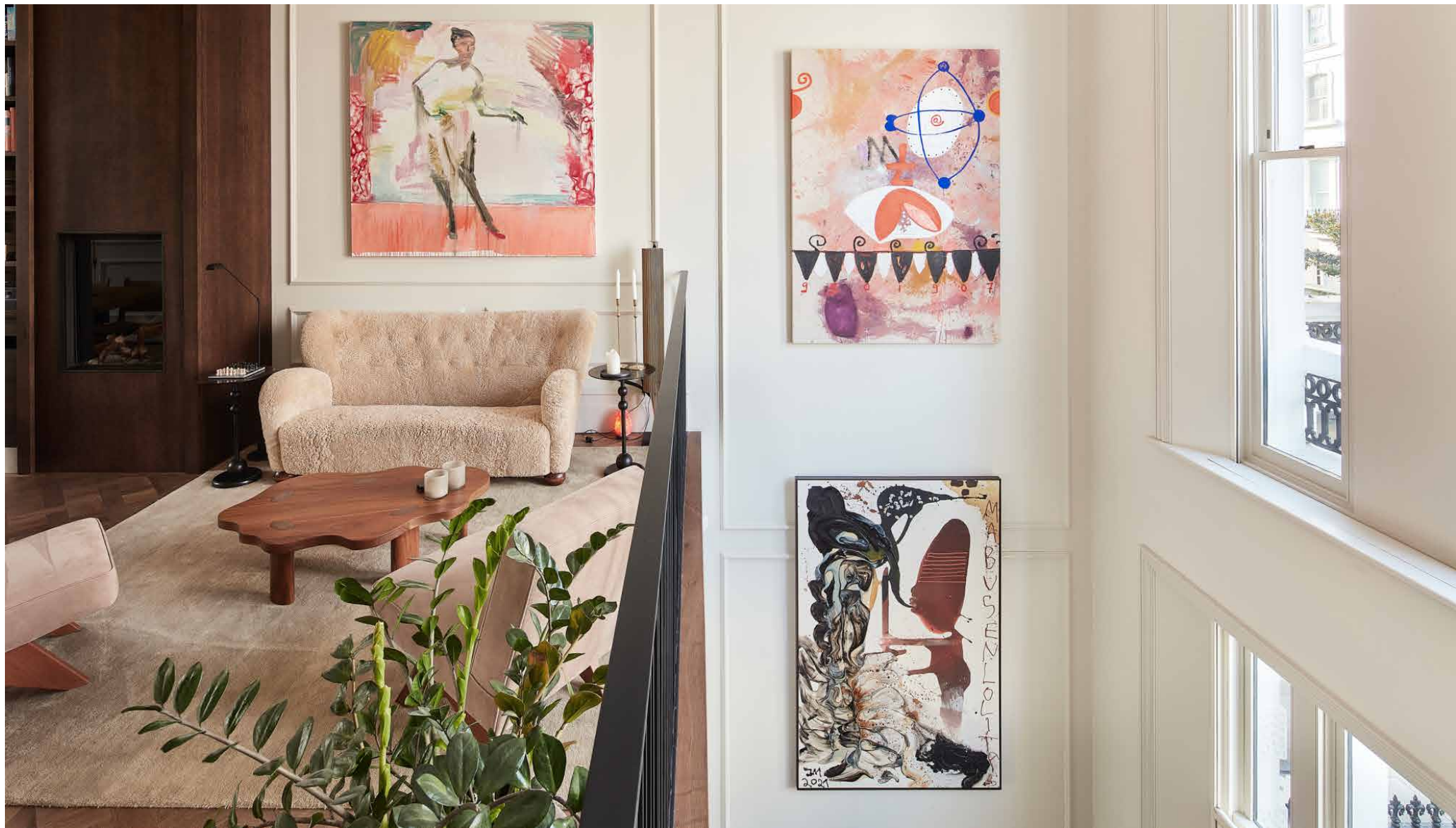


## The living spaces

From the street, its classic stucco frontage sets the tone. Beyond a smart portico entrance, the home makes an immediate statement with its palatial double-height proportions. Soaring ceilings, heritage cornicing and Versailles oak flooring offer a nod to the past, while contemporary touches bring things firmly into the now.

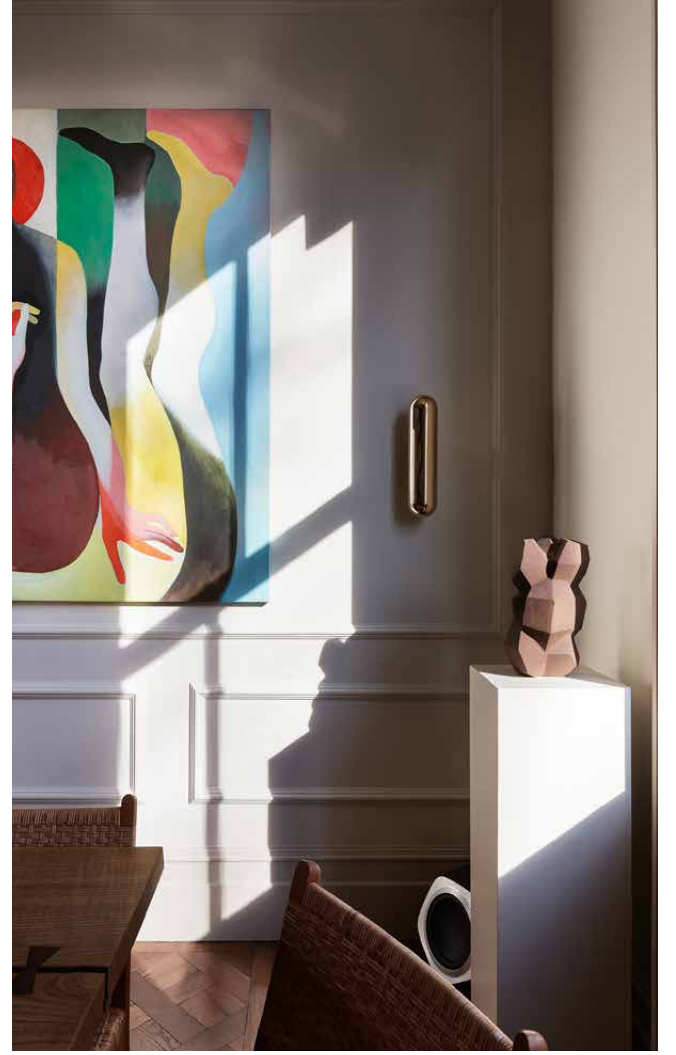
Head up to the first-floor mezzanine via the private lift or stylish open staircase, where a quiet reading nook overlooks the kitchen below. Behind, a formal dining area is backdropped by handsome display shelving and striking artwork. It's a refined spot for entertaining, complete with a gas fireplace and a built-in marble bar. Downstairs, the cinema and games room offer a more relaxed rhythm – perfect for family film nights or lazy Sunday lounging. Surround sound throughout means ambience follows you from room to room.











# Bedrooms & bathrooms

Upstairs, the principal bedroom suite occupies the entire second floor, crafted with a minimalist interior eye. Serene, softly lit and beautifully pared-back – pale walls and wood floors set a calming tone, while a row of full-height whitewashed wardrobes offers a neat storage solution. A trio of sash windows flood the room with natural light, while the bespoke oak dressing room and marble-lined bathroom add a layer of understated elegance. Think freestanding tub, double vanity, integrated storage – every element is calm and considered.

Spread across the third and fourth floors, there are two guest bedroom suites, three additional bedrooms and two further bathrooms – all continuing the home's flawless craftsmanship. On the lower-ground floor, another bedroom enjoys a kitchenette, making it an ideal offering for staff or long-stay visitors.



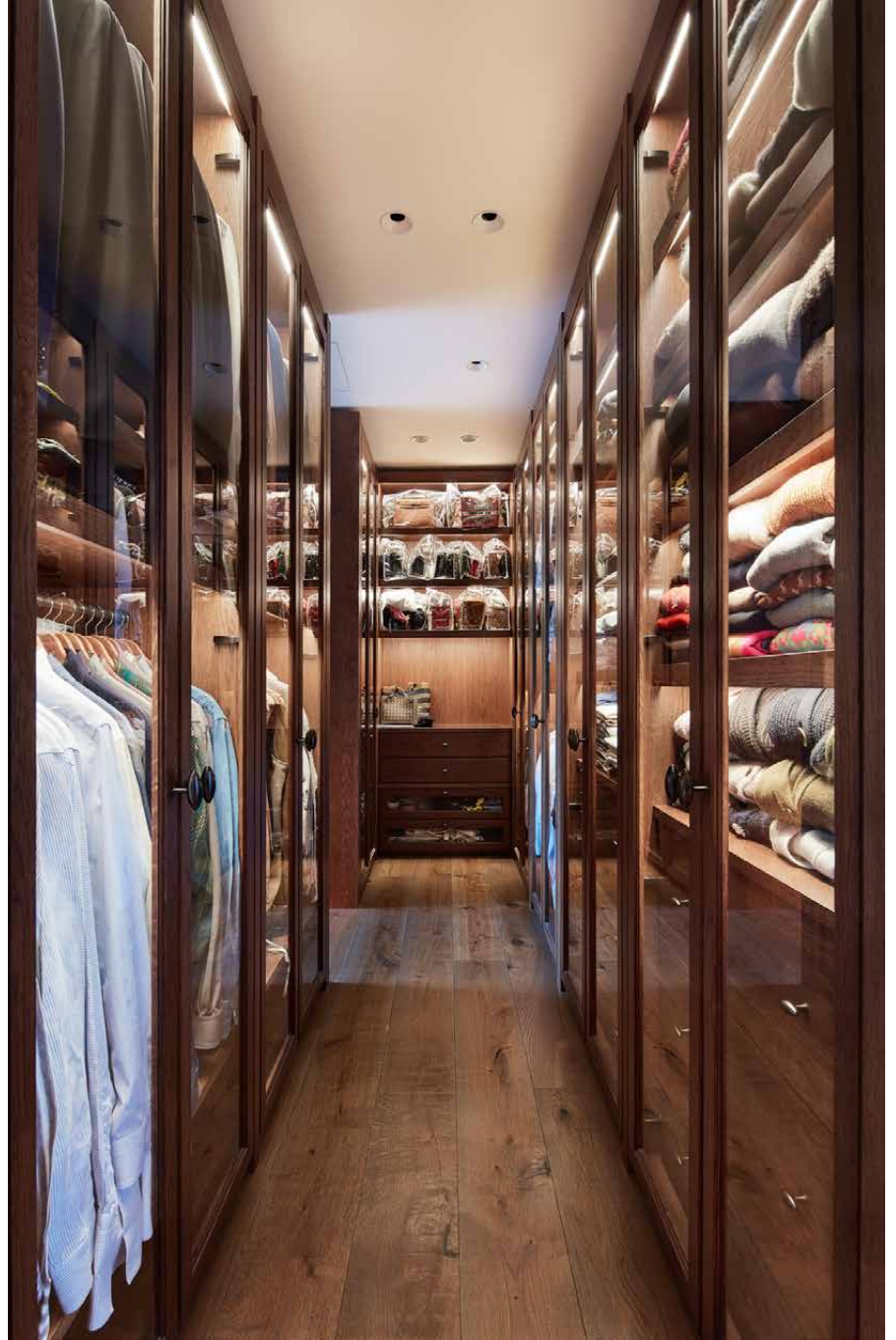




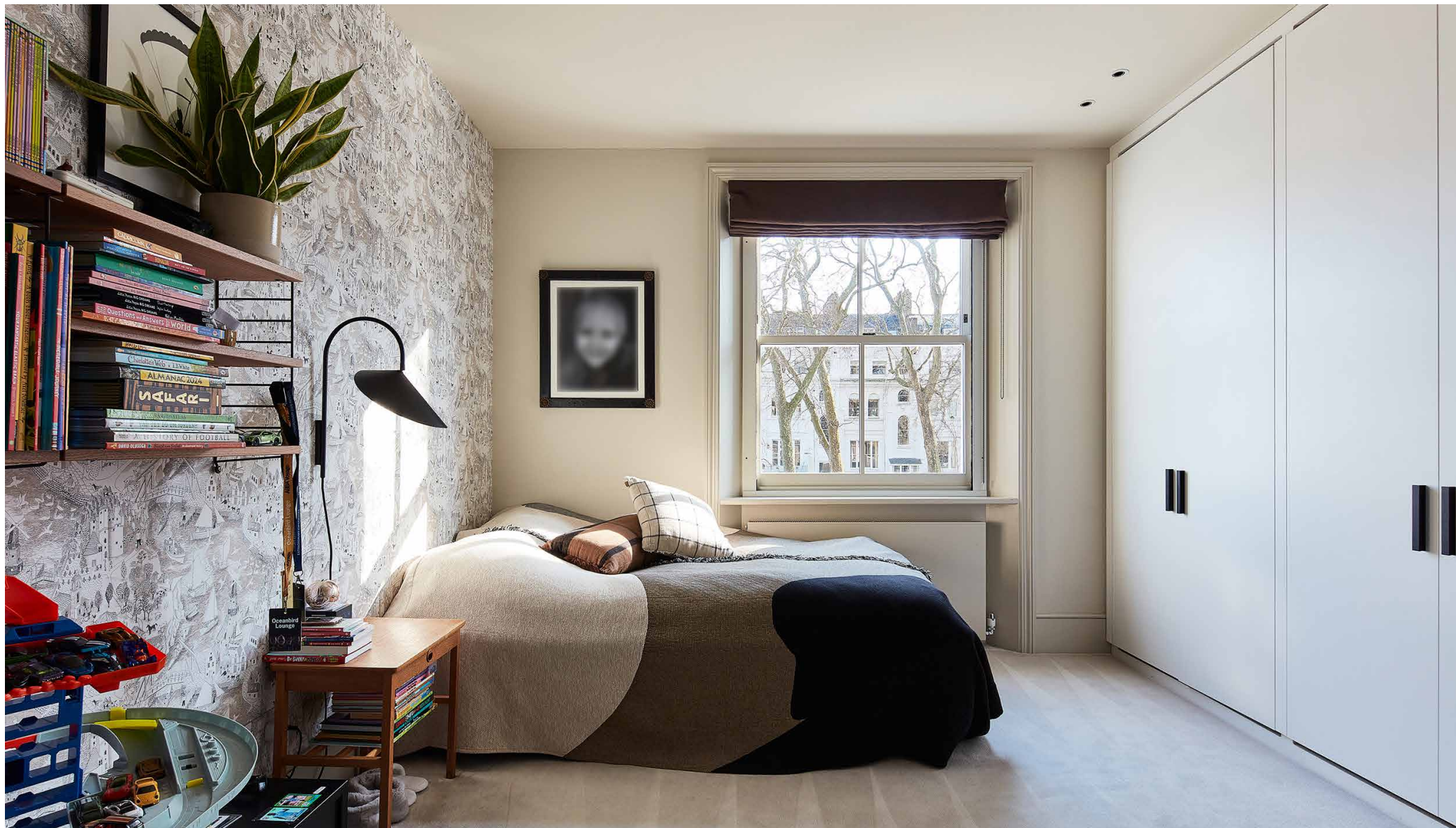




















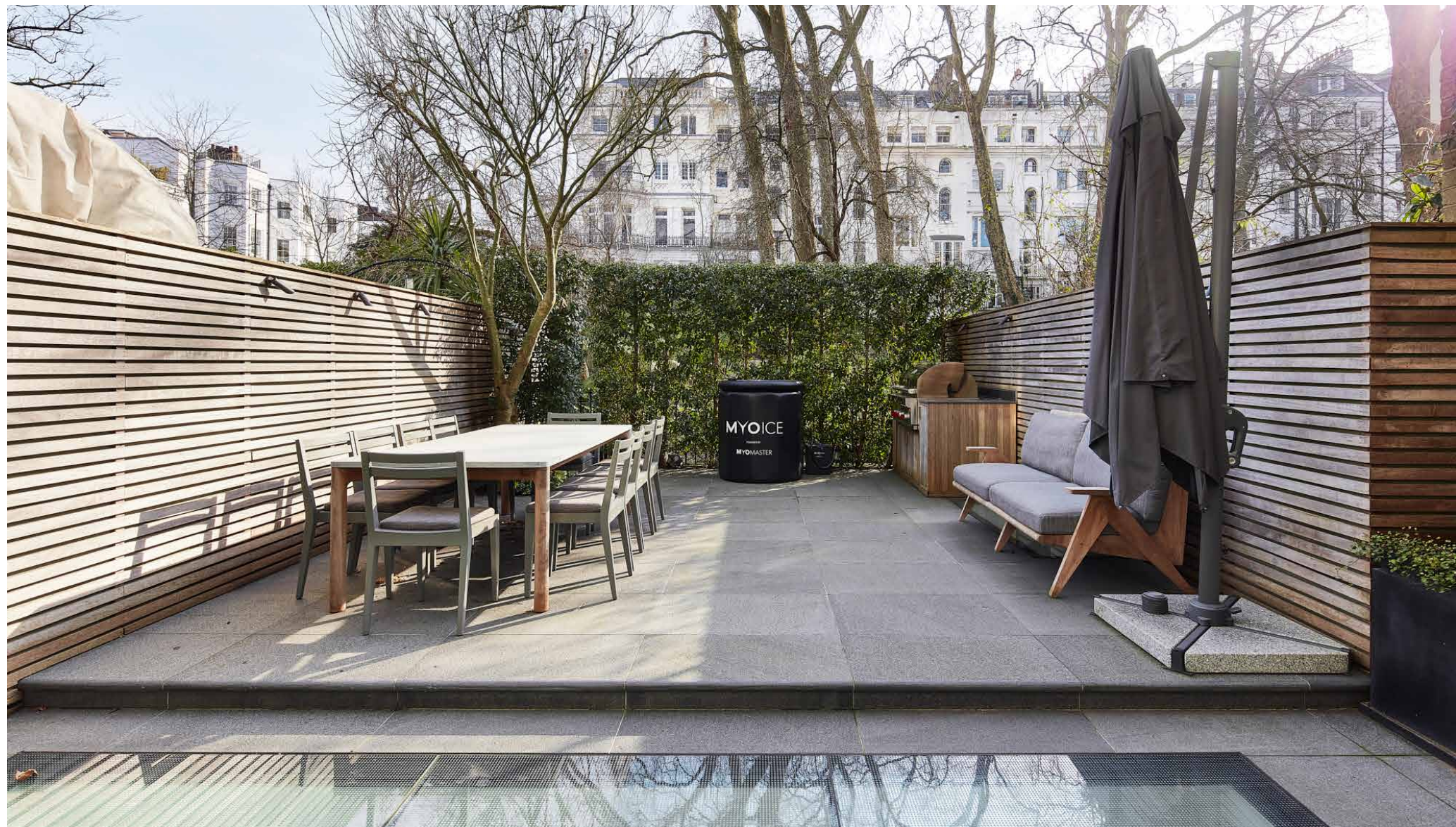




## Outdoor space

The private south-facing patio garden is tailor-made to enjoy London's warmer months. There's also access to the highly sought-after Arundel Gardens – an exclusive tree-filled sanctuary away from the buzz.











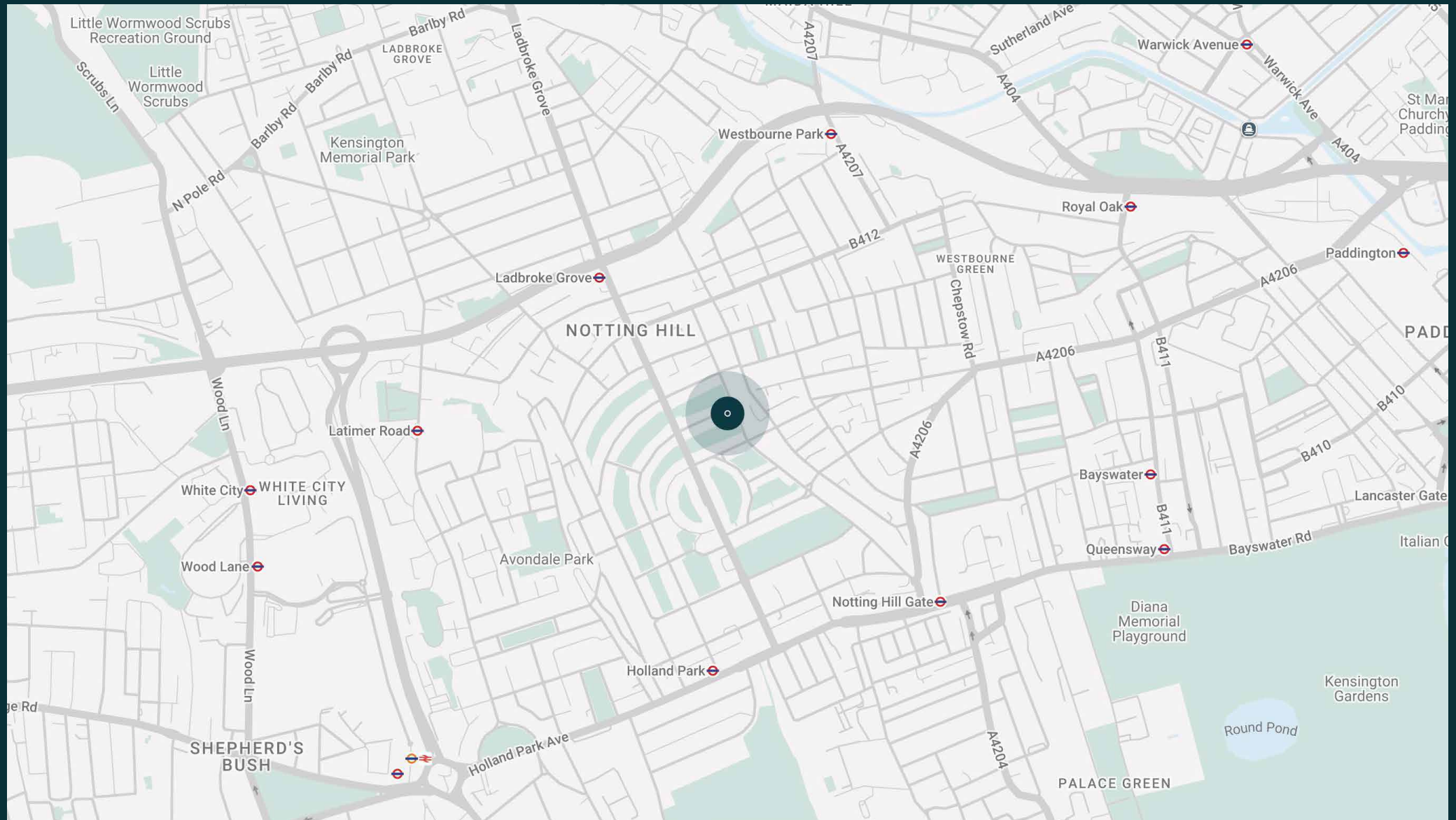
# The neighbourhood

Nestled among archetypal Notting Hill townhouses, Arundel Gardens has a distinctly peaceful feel with plenty to entertain on the doorstep.

Moments from Portobello Road, Westbourne Grove and Ledbury Road, coveted eateries including Gold, Ottolenghi and The Ledbury are minutes away. Stop by Notting Hill Fish & Meat Shop for seasonal local produce, work up a sweat at SoulCycle or head to Holland Park for a meditative stroll. For fine dining, Gold or Core by Clare Smyth are firm favourites, or end the day with a blockbuster at the Electric Cinema.



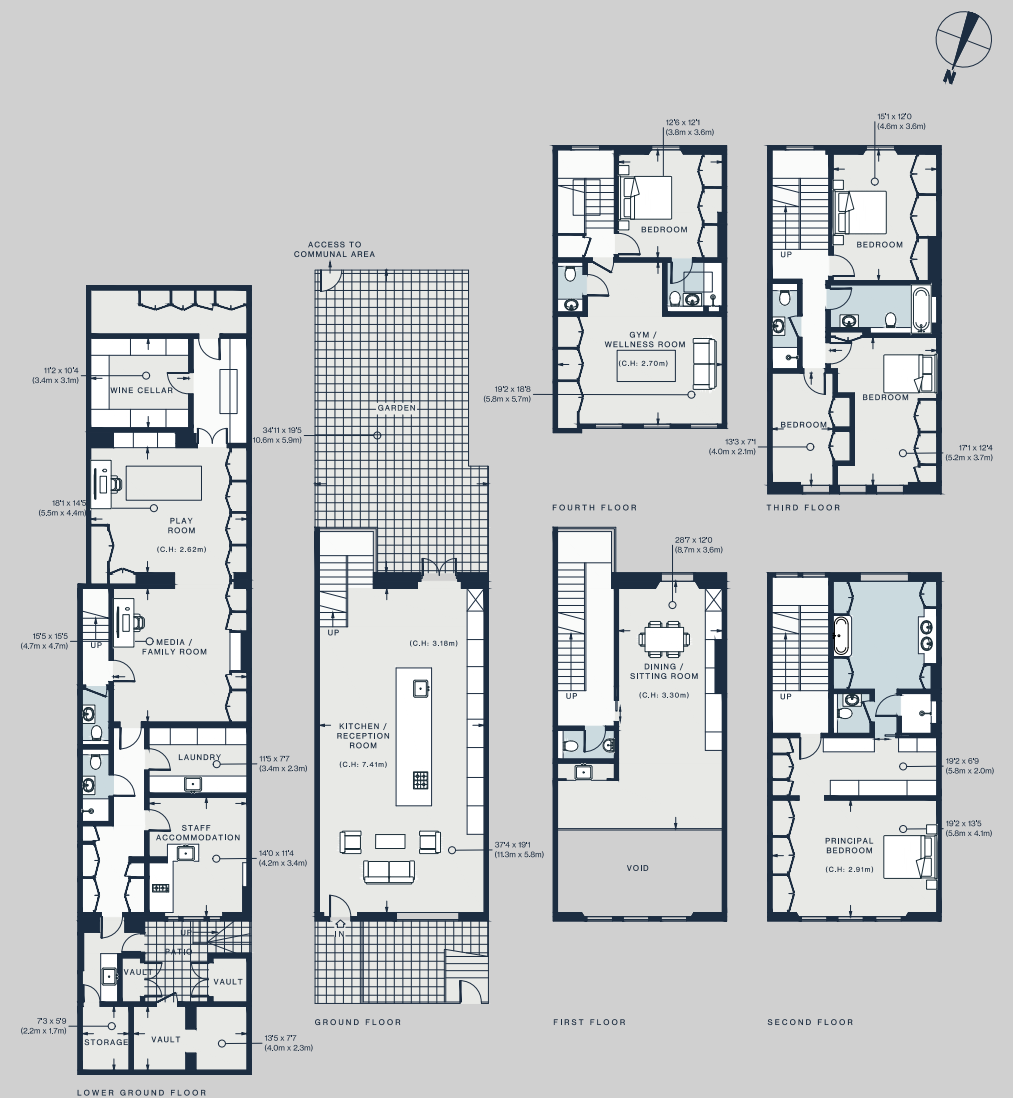




# Property features

- Open-plan kitchen and reception room
- Formal dining and sitting room
- Principal bedroom suite with dressing room
- Two guest bedroom suites
- Three further bedrooms
- One further shower room
- Two cloakrooms
- Patio garden
- Media room
- Playroom
- Wine cellar
- Laundry room
- Staff accommodation
- Communal garden access
- Royal Borough of Kensington and Chelsea

Approx. 463 sq m / 4,980 sq ft



Approx. Gross Internal Area = 4,980 sq ft / 462.7 sq m

Floor plans are for illustrative purposes only and not to scale. Compliant with RICS code of measuring practice.



# Guest & concierge services

Our concierge team are here to help guests settle in, seamlessly. Centre court tickets to Wimbledon, Premier League seats with the best views, Savile Row tailors on standby, or a private chef to cater to individual tastes – we aim to elevate every stay.

From the moment of booking with us, each guest has a single point of contact to finesse the details. Our statement spaces are just the starting point – to ensure everyone feels at home, our rates include:

- 
- Weekly housekeeping
  - Flexible check-in/out
  - Luxury linens and Bamford toiletries
  - Legal compliance on all our homes
  - A personal welcome and arrival essentials
  - Unlimited access to guest services and tailored experiences
  - Professional inventory inspection before and after every stay
  - Access to a curated portfolio of sole agency properties



# domus stay.

Please get in touch if you have any questions  
or require any further information.

[hello@domusstay.com](mailto:hello@domusstay.com)

+44 (0)20 8168 8880

The property particulars are a guide not statements. Descriptions, photographs, and plans are for guidance only. The Property is offered "subject to contract and references". No warranties, representations, License or Tenancy is given by Domus Stay. Our full disclaimer together with trading names and our Privacy Policy is shown on our website

© Domus Stay 2025. All rights reserved.

