

domus
stay.

Argyll Road

KENSINGTON

5 Bedrooms, 4 Bathrooms
For 10 guests





Bright, spacious and welcoming in feel, this elegant heritage house to rent is the ultimate family home from home.

Standing tall at the end of a row of stucco-fronted townhouses, not far from Kensington High Street and Holland Park, there's plenty to explore within walking distance of this impressive west London base. Grand inside and out, lofty proportions and characterful period features define five floors of social settings.



The living spaces

Take your pick from numerous living spaces. On the ground floor, reception rooms flank either side of the wide hallway – all intricate cornicing, high ceilings and working marble fireplaces ready for cosy evenings. Floor-to-ceiling bay windows flood both rooms with natural light. One comes with a desk for homeworking, the other with an inviting configuration of armchairs – grab a page turner from the bookshelves to enjoy.



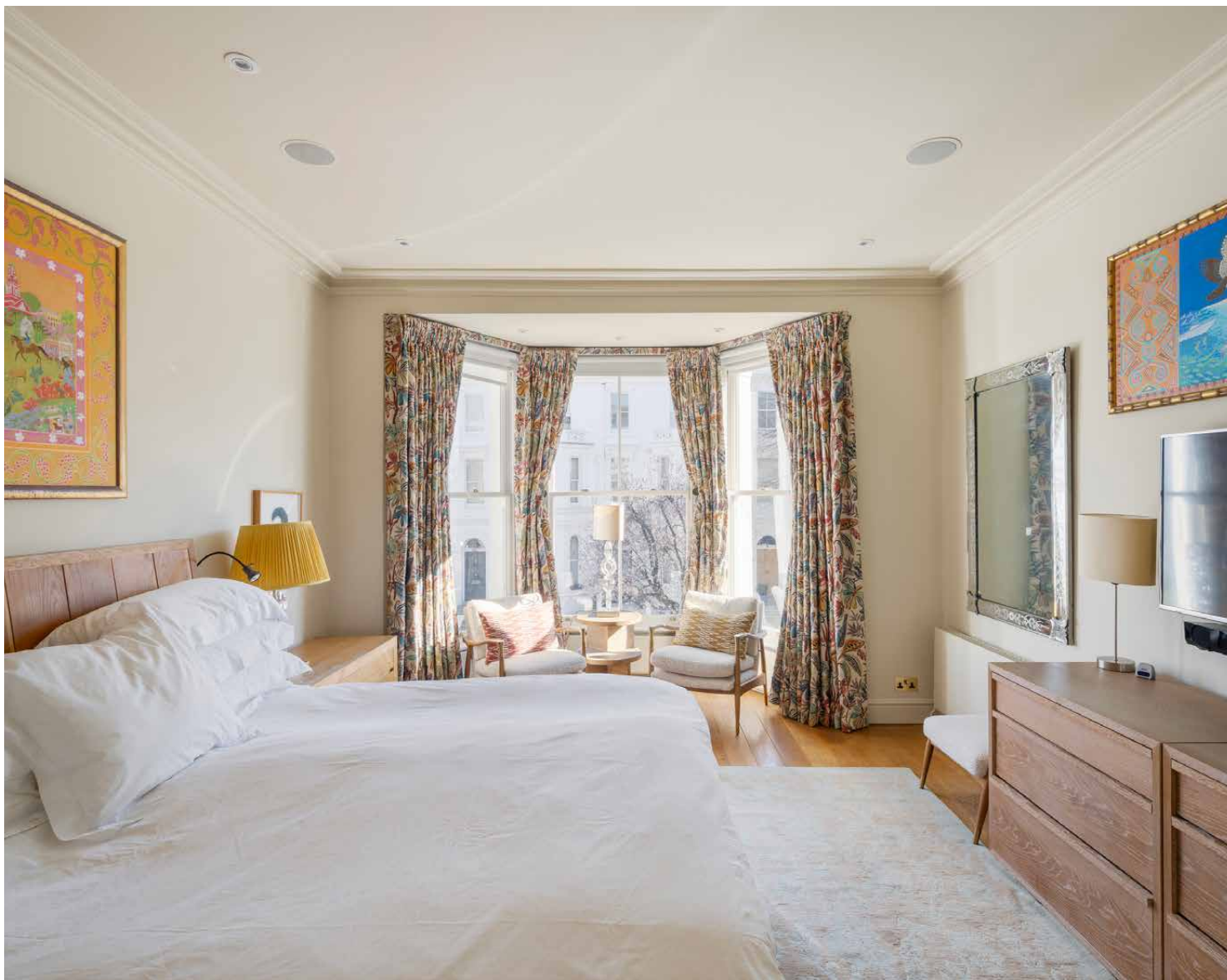


Family living continues downstairs with a third reception room finished in atmospheric royal blue alongside an open-plan kitchen and dining room – both more intimate and relaxed in feel than their more formal counterparts upstairs. The kitchen is designed for congregating in. A breakfast bar takes centre stage with its own sink, while integrated Miele appliances and a Lacanche oven, stove and extractor hood create an elegant, and well-equipped, culinary setting. Beyond, a dining table sits within a bright conservatory that opens onto a patio garden.







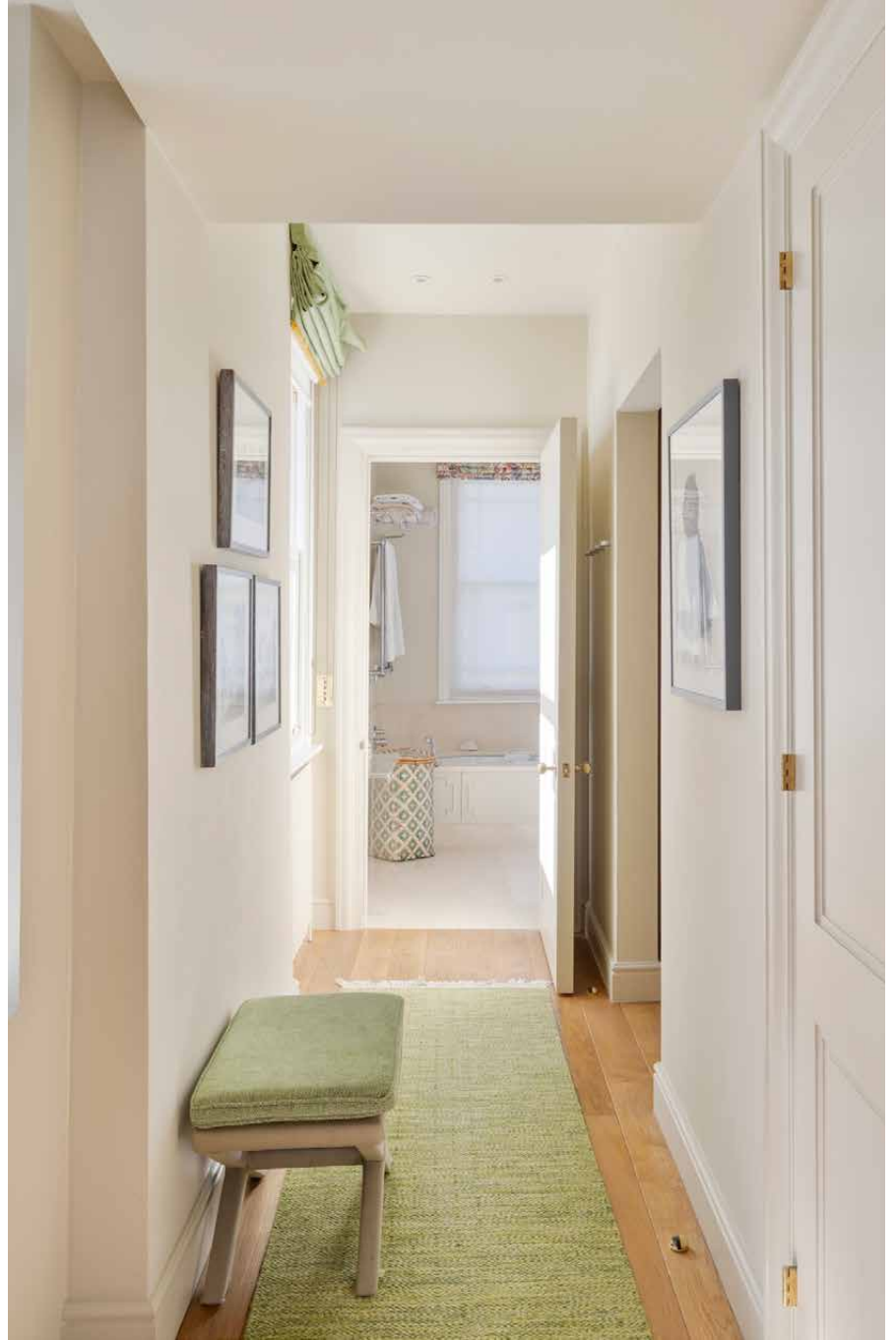


Bedrooms & bathrooms

Back inside on the first floor, period features continue into the sleeping quarters. The neutral-hued principal bedroom suite sits behind sliding doors, with a wall of custom-built cabinetry and an expansive bay window overlooking Argyll Road's impressive façades. A study, dressing room and bathroom with a walk-in shower and double vanity completes the suite.

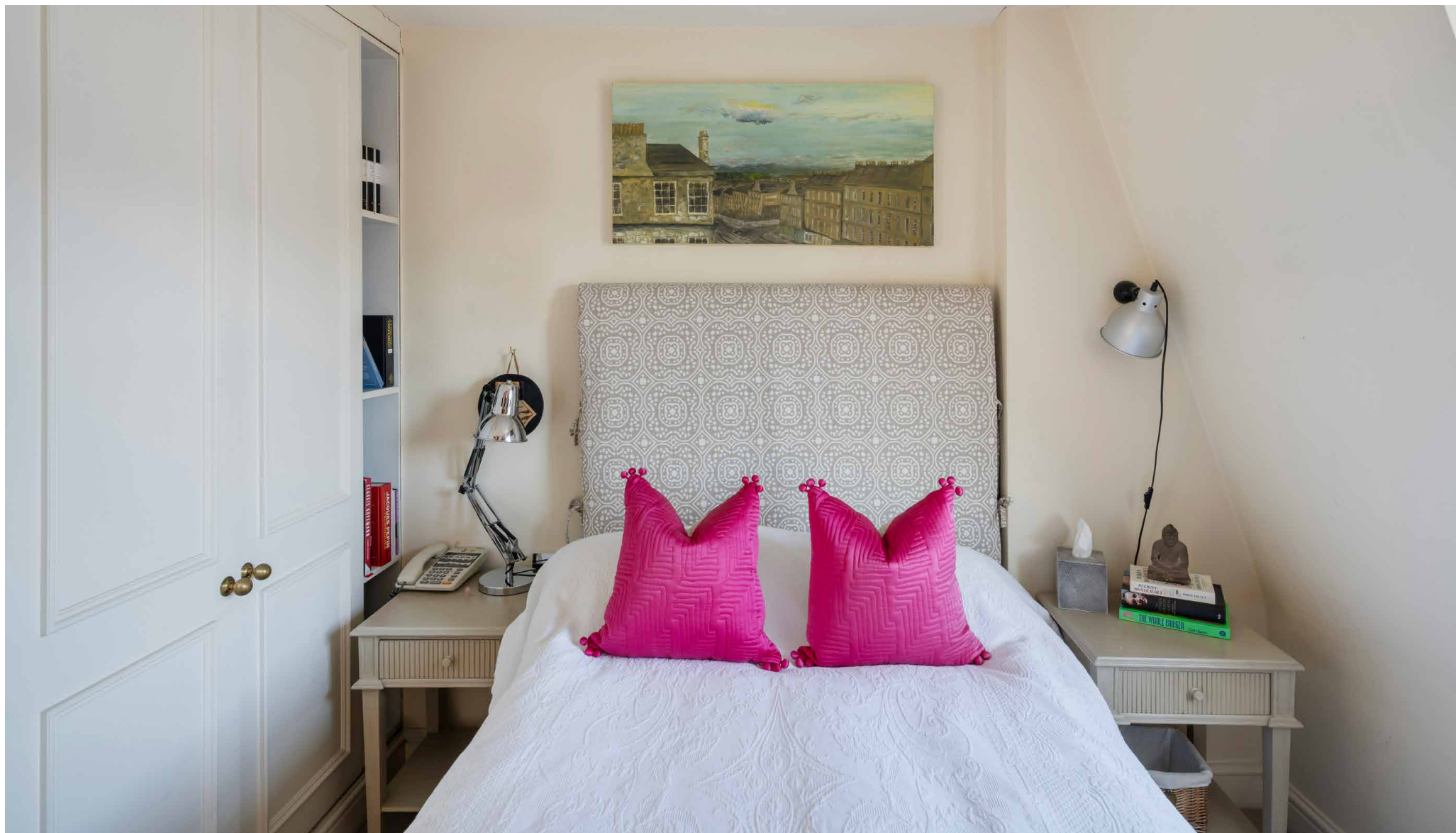
Up the impressive staircase, two further guest suites await with the same soothing tones and light-flooded interiors. The remaining two bedrooms crown the home on the top floor, with views out across Kensington's rooftops, and served by a shower room. Skylights illuminate period features in the hallway and bathroom, and a Juliet balcony sits off one of the bedrooms.











Outdoor space

Outside, al fresco dining is an inviting possibility. With privacy provided by a veil of bamboo and shrubbery, the manicured setting is an oasis amid London's hustle and bustle, with plenty of outdoor furniture for entertaining.



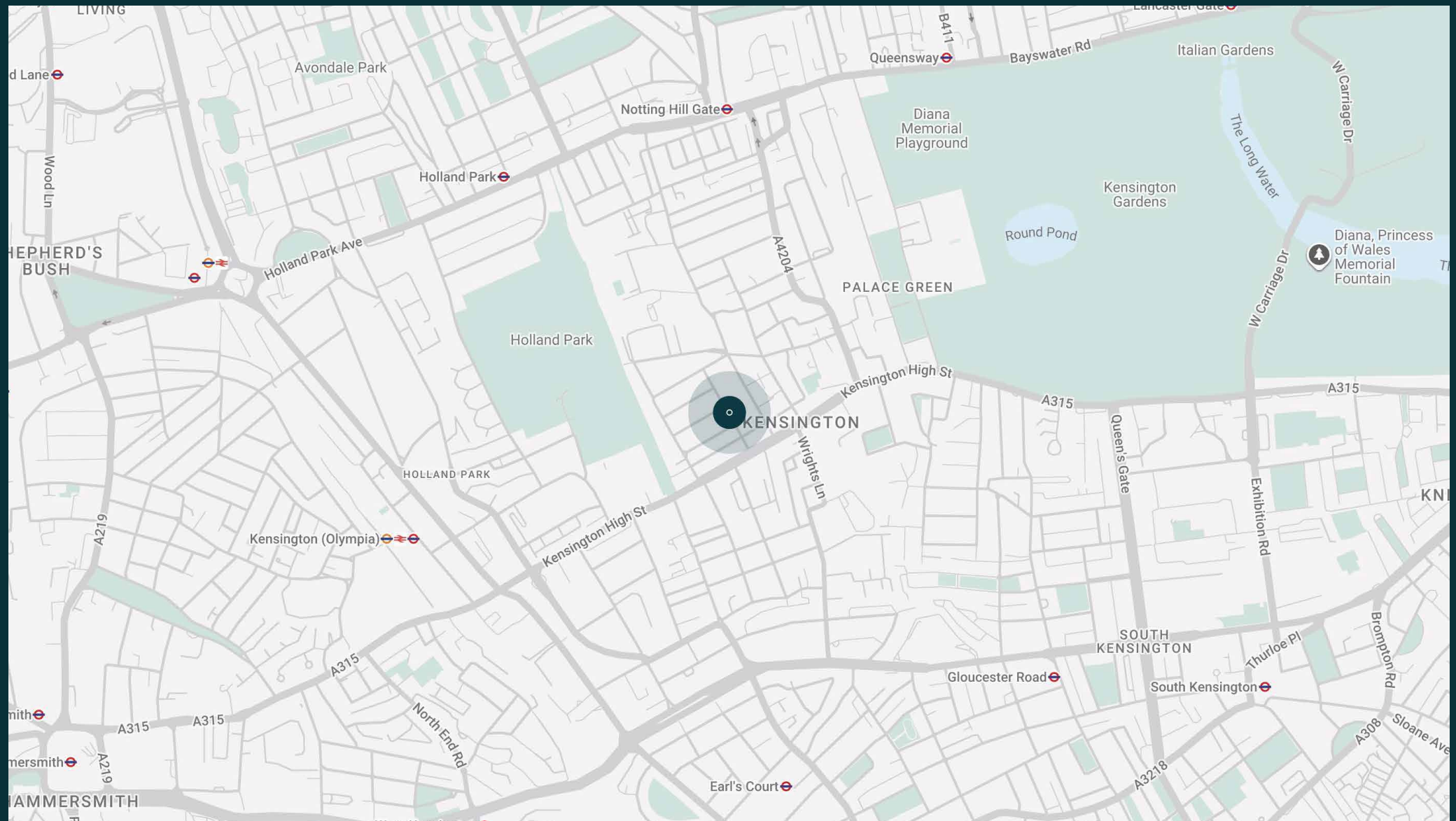


The neighbourhood

Immerse yourself in all the neighbourhood has to offer at Argyll Road, a springboard to Holland Park and Notting Hill.

Just around the corner from Kensington High Street's variety of shops and delis, while Holland Park Avenue's string of independent retailers is a 20-minute walk away – there's everything you could need on the doorstep here. Pick up a paperback from Daunt Books and spend a leisurely afternoon in Holland Park or Kensington Gardens. A walk in the other direction brings you to the award-winning Design Museum. Stretch your legs further with a stroll to Portobello Road, stopping for a drink at The Hillgate on the way.



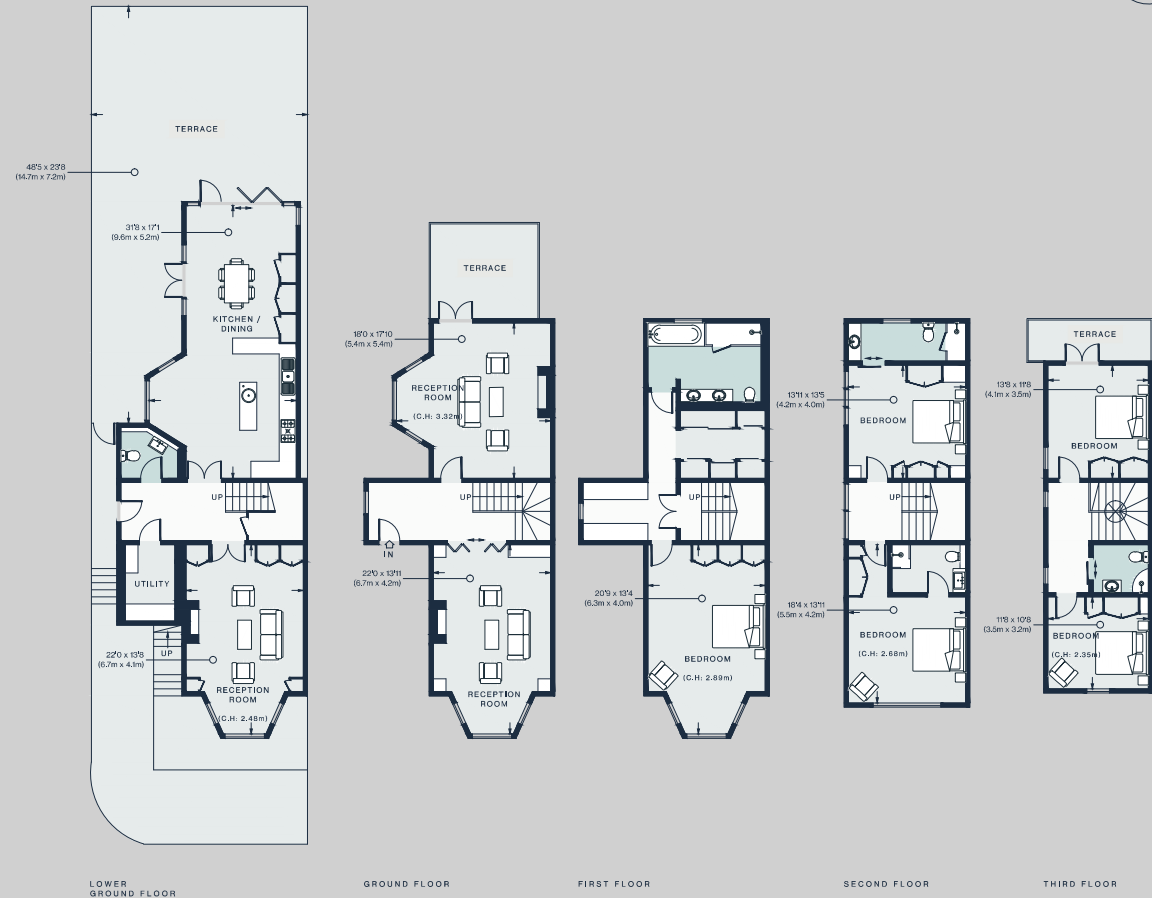




Property features

- Three reception rooms
- Open-plan kitchen and dining room
- Principal bedroom suite with dressing room and study
- Two guest bedroom suites
- Two further bedrooms
- Two further bathrooms
- Cloakroom
- Private garden
- Juliet balcony
- Parking
- Royal Borough of Kensington & Chelsea

Approx. 3,377 sq ft / 313.7 sq m



Approx. Gross Internal Area = 3377 sq ft / 313.7 sq m

Floor plans are for illustrative purposes only and not to scale. Compliant with RICS code of measuring practice.

Guest & concierge services

Our concierge team are here to help guests settle in, seamlessly. Centre court tickets to Wimbledon, Premier League seats with the best views, Savile Row tailors on standby, or a private chef to cater to individual tastes – we aim to elevate every stay.

From the moment of booking with us, each guest has a single point of contact to finesse the details. Our statement spaces are just the starting point – to ensure everyone feels at home, our rates include:

-
- Weekly housekeeping
 - Flexible check-in/out
 - Luxury linens and Bamford toiletries
 - Legal compliance on all our homes
 - A personal welcome and arrival essentials
 - Unlimited access to guest services and tailored experiences
 - Professional inventory inspection before and after every stay
 - Access to a curated portfolio of sole agency properties





Please get in touch if you have any questions
or require any further information.

hello@domusstay.com

+44 (0)20 8168 8880

The property particulars are a guide not statements. Descriptions, photographs, and plans are for guidance only. The Property is offered "subject to contract and references". No warranties, representations, License or Tenancy is given by Domus Stay. Our full disclaimer together with trading names and our Privacy Policy is shown on our website

© Domus Stay 2025. All rights reserved.

