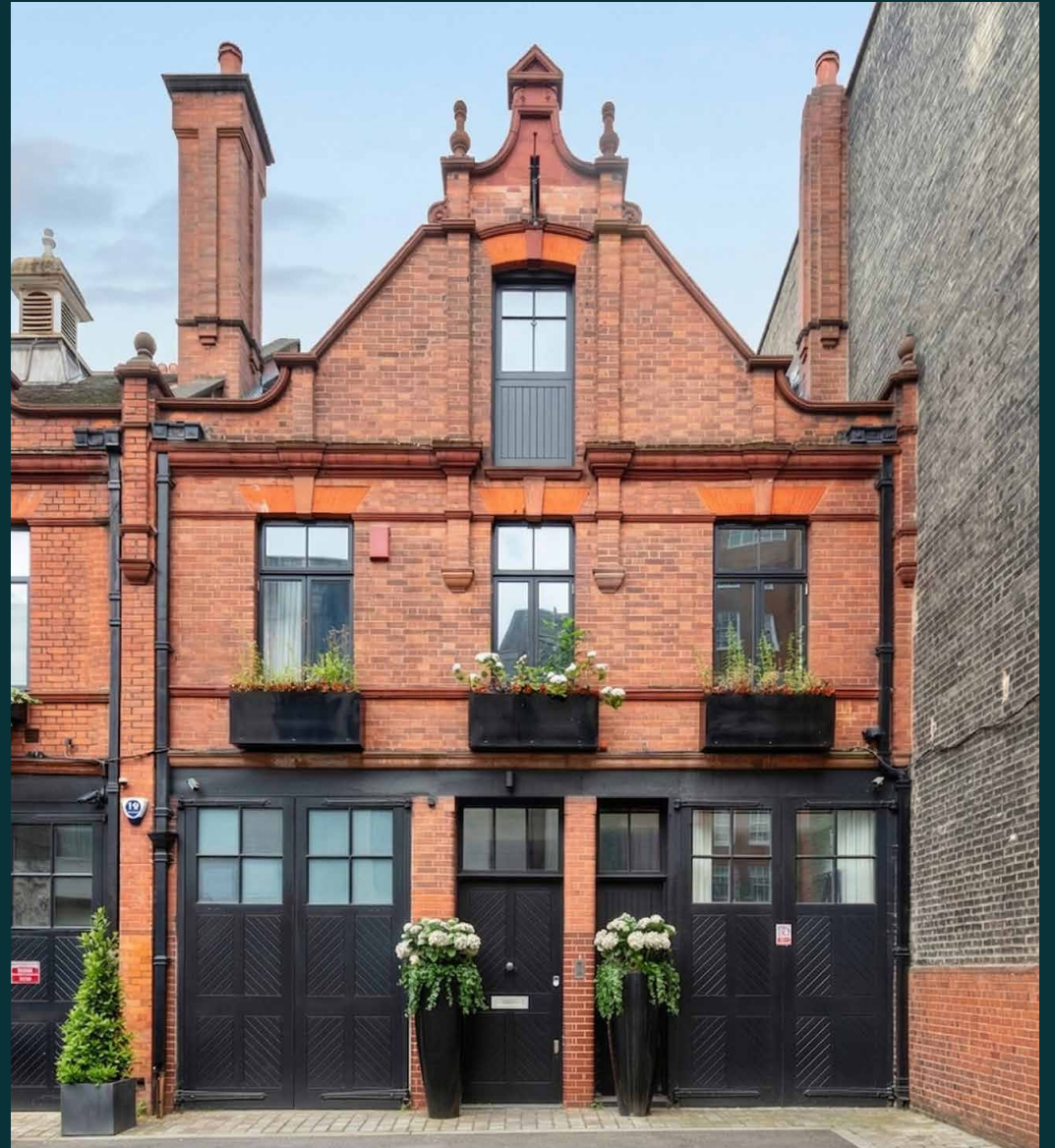


domus
stay.

Adam's Row

MAYFAIR

4 Bedrooms, 4 Bathrooms
For 8 guests





Set on one of Mayfair's most prestigious addresses, this mews home is an enclave of considered calm.

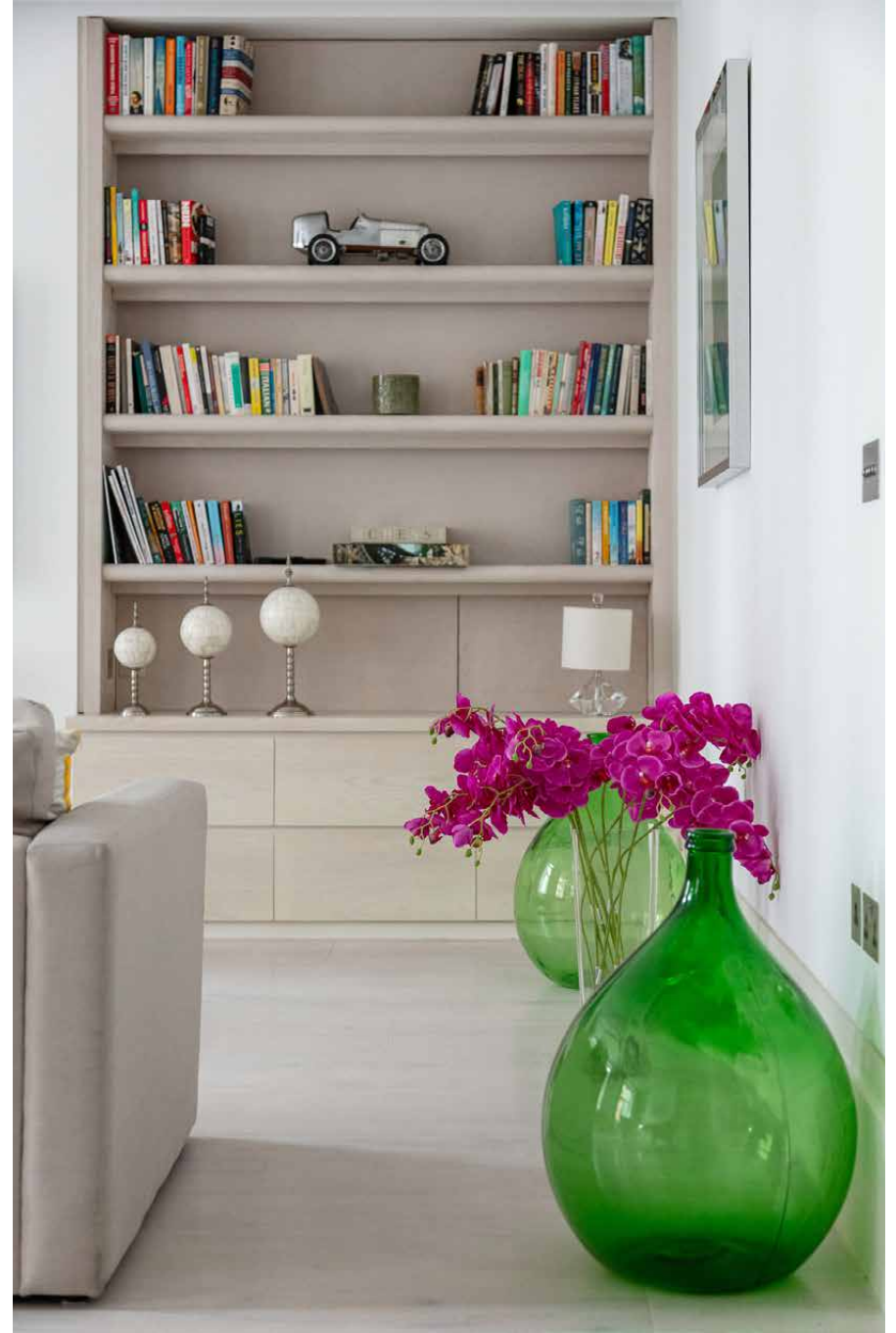
The hum of Mayfair quiets along Adam's Row, a handsome mews street lined with red brick façades. Behind one of these striking exteriors lies a four-bedroom home that sets the standard for contemporary minimalism. A sculptural winding staircase threads the four levels together; an abundance of natural light, pale tones, bespoke finishes and integrated technologies showcase the commitment to flawless design throughout. Plus, there's an integrated garage for seamless transport in and around the city.

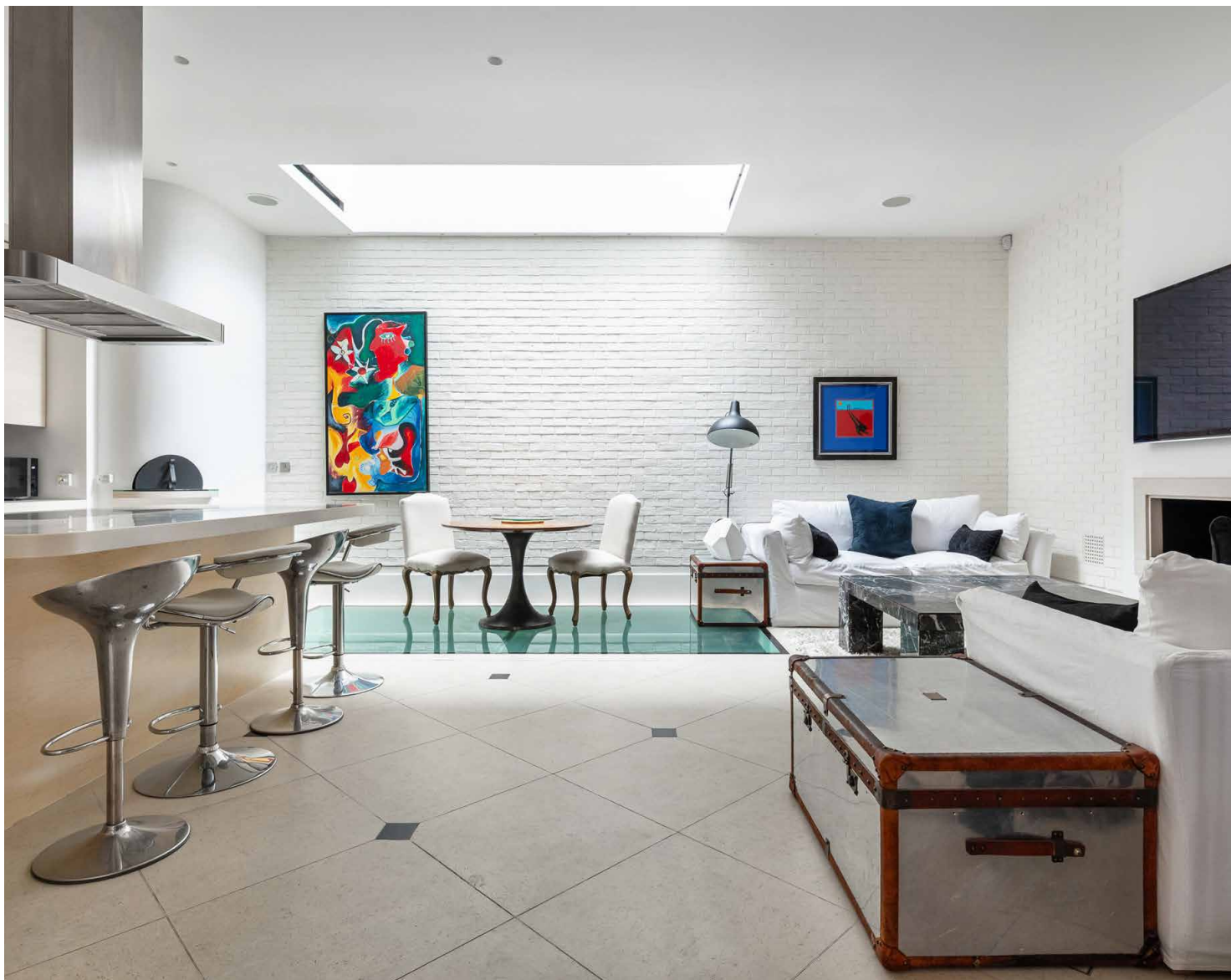




The living spaces

On the first floor, the formal reception room is a timeless affair. Engineered hardwood floors and clean-line cornicing set the scene, while the tall library shelving and a minimalist fireplace add a lived-in cosiness. Pops of colour are introduced through bold midcentury-style seating – enlivening the pared-back aesthetic and making for an inviting social setting.

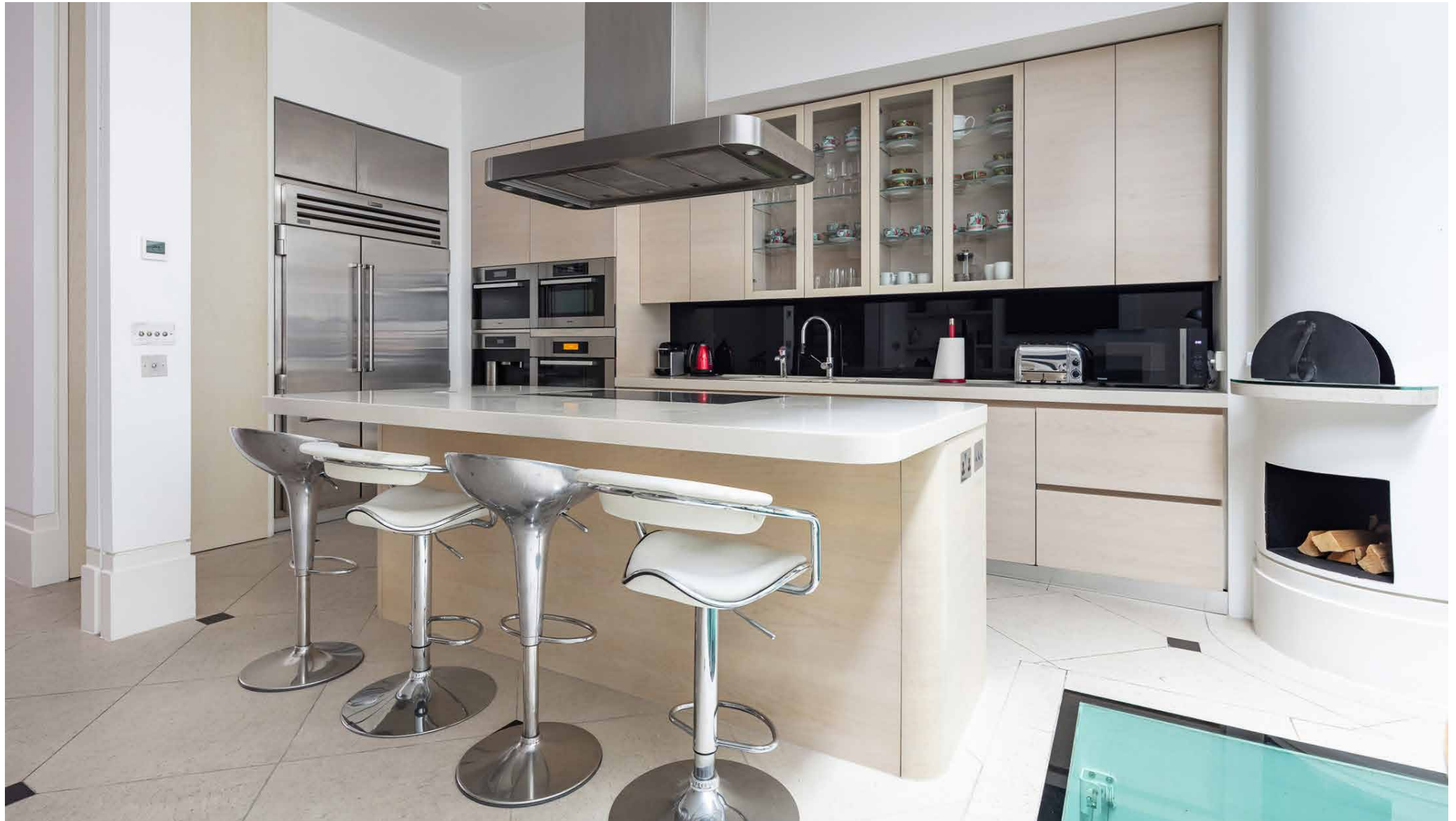


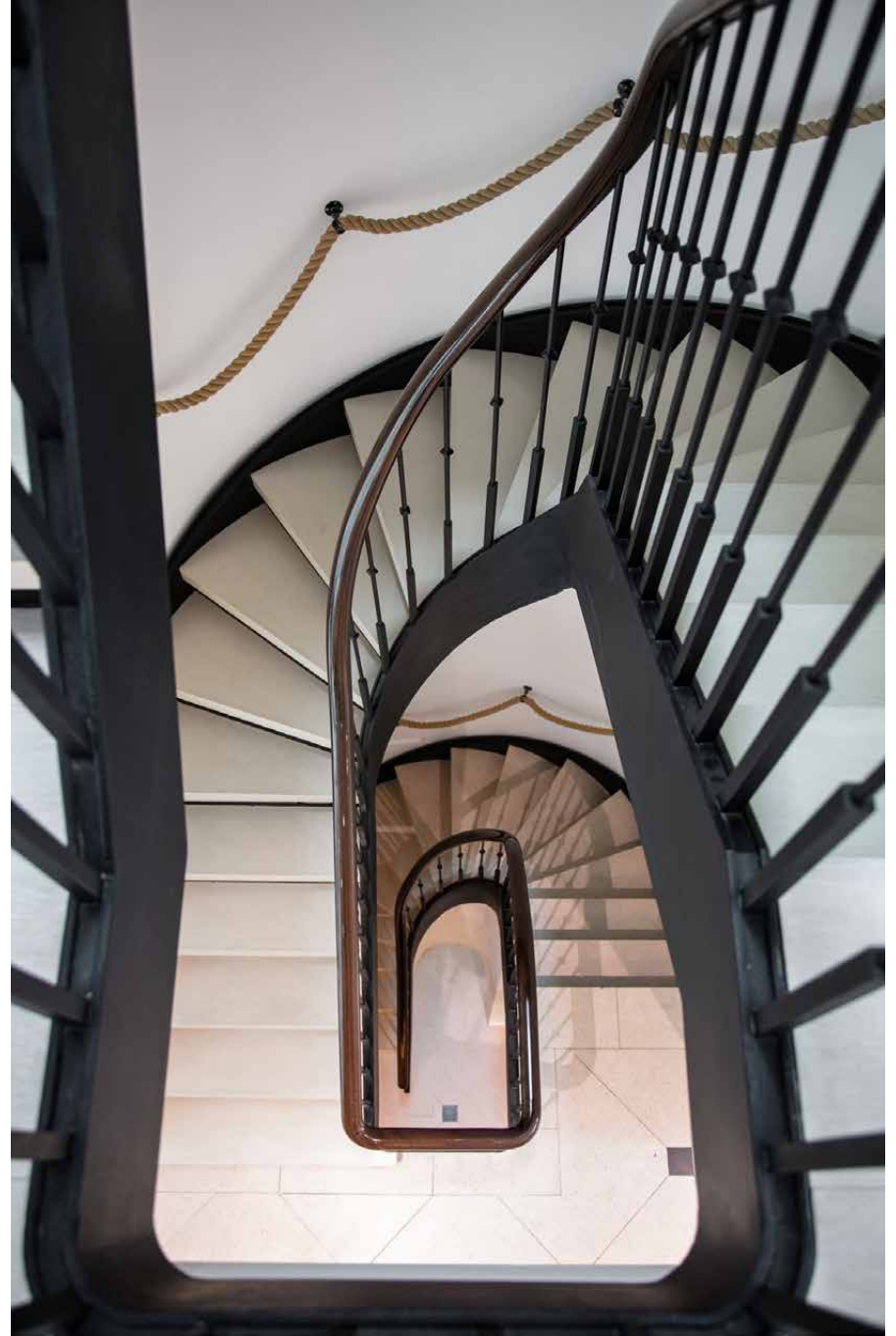


Kitchen & dining

The open-plan ground floor forms the welcoming heart of the home. At one end, an elegant circular table is backdropped by colourful book spines that stretch up the wall. Byobd, a sleek island and breakfast bar anchor the kitchen, where high-tech appliances are seamlessly integrated into smooth stone surfaces. A bespoke pizza oven, neatly set into a curved wall, is set for all manner of entertaining.

Sunlight spills through a skylight onto the dining area, while a relaxed television area completes the space — perfect for post-meal downtime. Be it lively gatherings or intimate evenings in, make use of the home's bespoke wine cellar in the cinema room below — a striking structure with diamond-like shelving.







Bedrooms & bathrooms

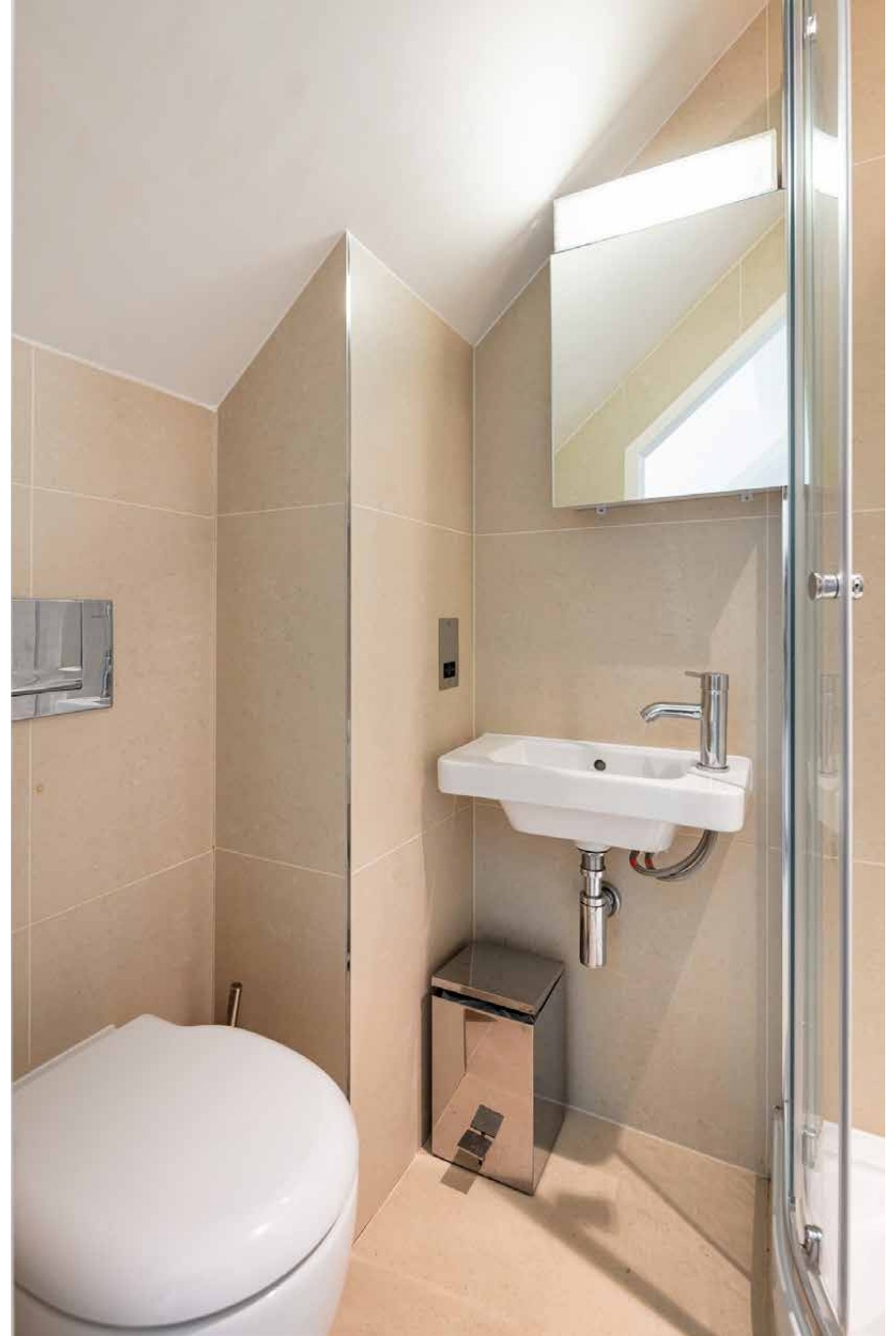
The principal bedroom suite is a study in minimalism and calm. Pale tones envelop the expansive footprint, while built-in storage maintains uncluttered lines. The open-plan bathroom draws the eye to a freestanding sculptural bathtub and full-height glazing opens onto a sun-drenched south-facing terrace – backdropped by the elegant Mayfair rooftops.

Three additional bedrooms – one of which is an en suite – continue the home's signature tranquil feel. Throughout, soft linens, abundant natural light and bespoke wardrobes ensure calm form and sleek function.







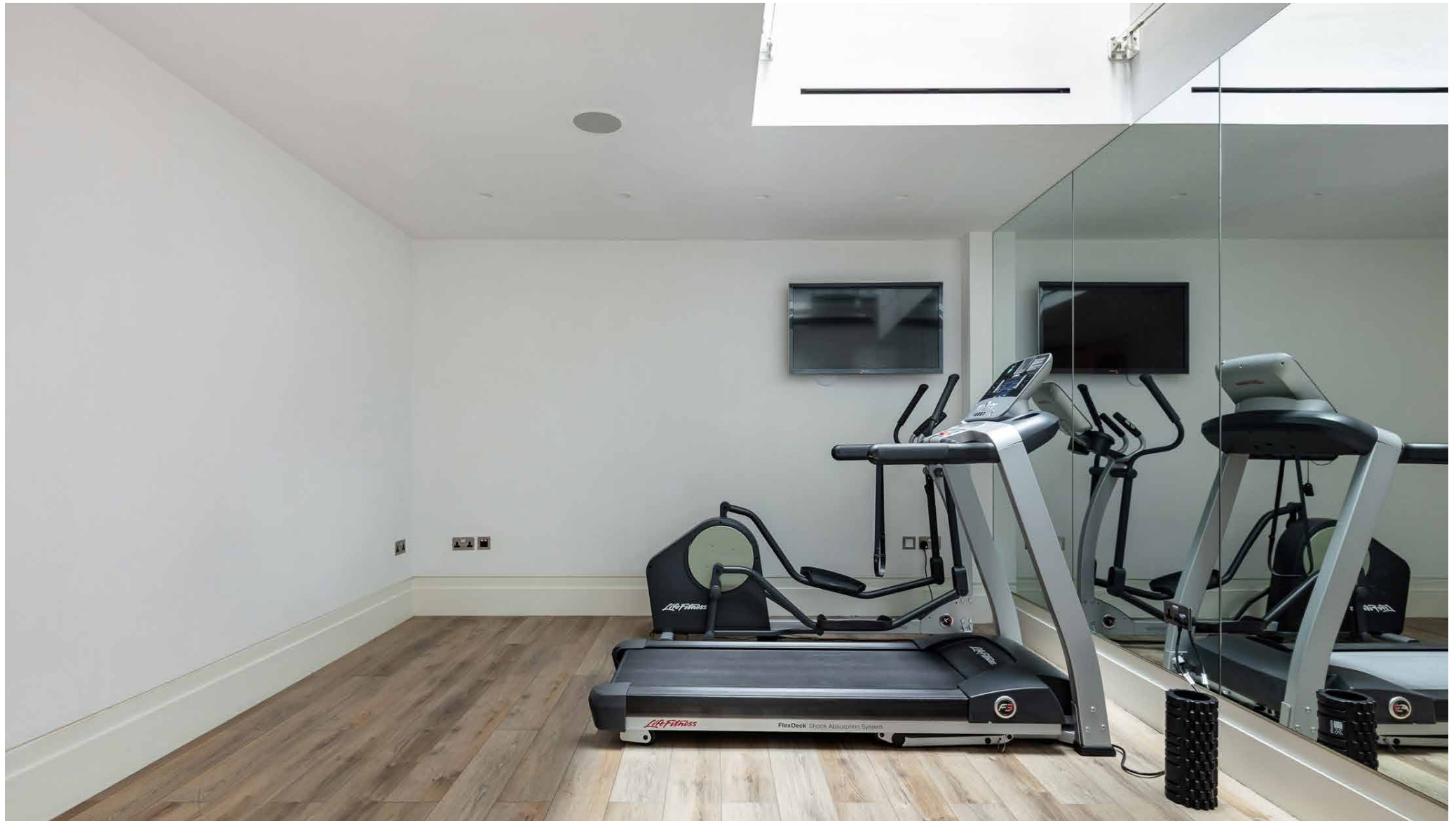


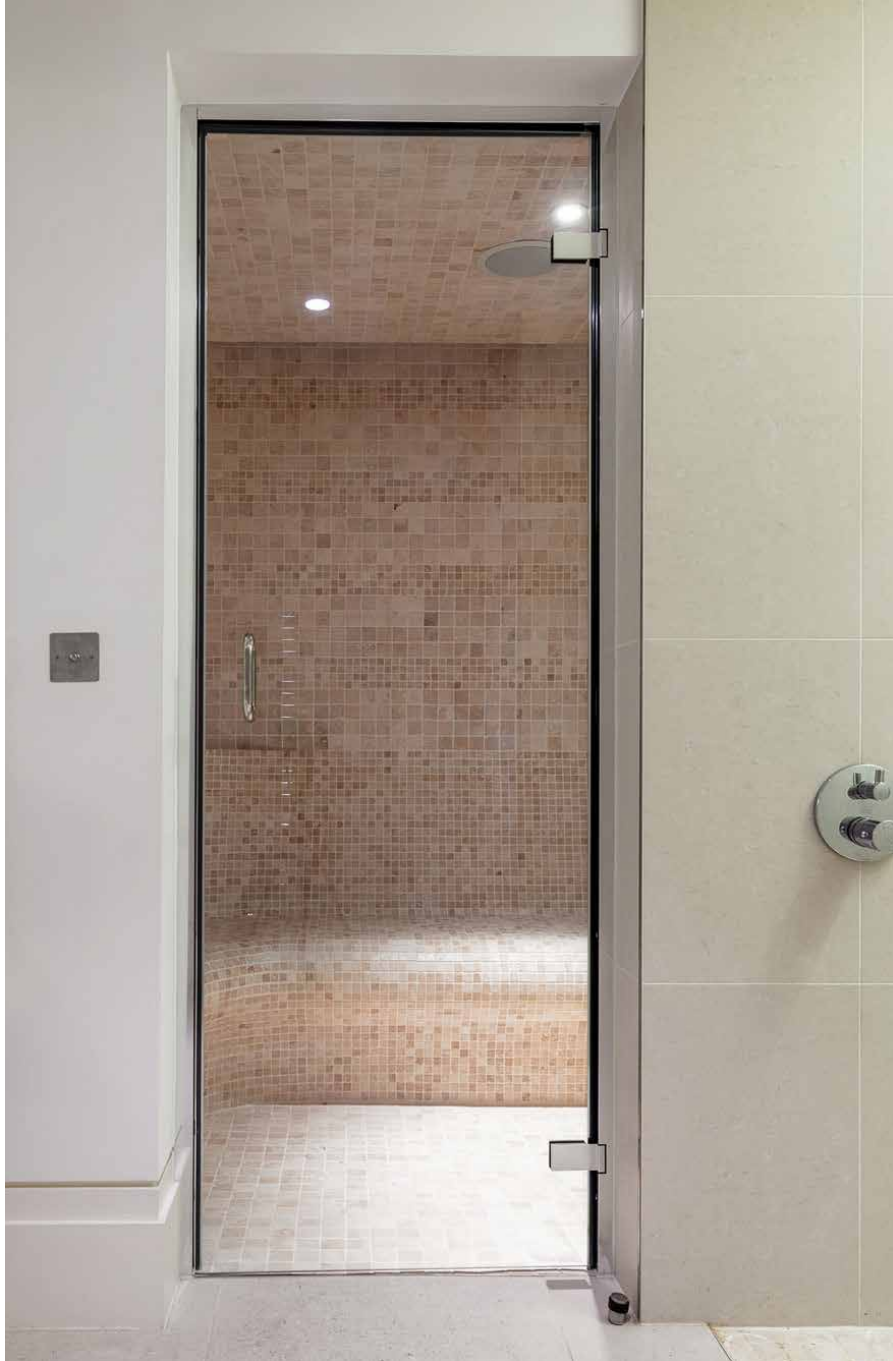




Wellness & leisure

The lower-ground level is set for entertainment and movement. A luxe home cinema is finished with indulgent seating and padded walls for an immersive film experience. Next door, a fully-equipped gym is poised for high-octane workouts and slower therapeutic exercise, complemented by a wood-clad sauna.

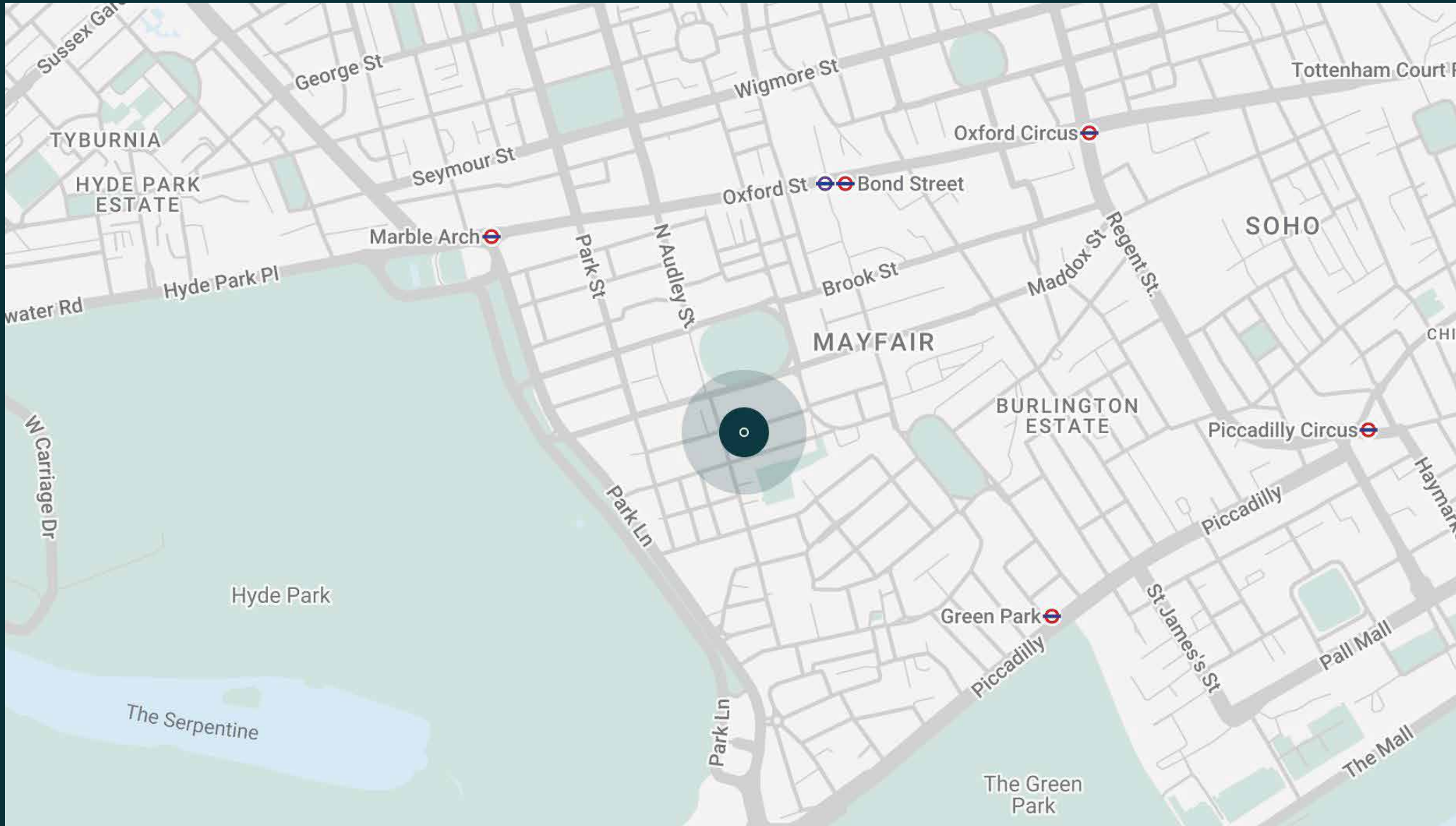




The neighbourhood

The heart of luxury London, Adam's Row puts you within easy walking distance to the capital's best retail and restaurant scenes. Browse the high-end boutiques of New Bond Street, Burlington Arcade and Fortnum and Mason's, before lingering over a world-class exhibition at the Royal Academy or National Gallery. Stretch your legs around Green Park — then dine in Michelin-starred style at Benares, Sketch and Ormer.





Property features

- Open-plan kitchen, dining and living room
- Formal reception room
- Principal bedroom suite with terrace
- Guest bedroom suite
- Two further bedrooms
- Home cinema
- Gym
- Sauna
- Integrated garage
- City of Westminster

Approx. 3,917 sq ft / 364 sq m



Guest & concierge services

Our concierge team are here to help guests settle in, seamlessly. Centre court tickets to Wimbledon, Premier League seats with the best views, Savile Row tailors on standby, or a private chef to cater to individual tastes – we aim to elevate every stay.

From the moment of booking with us, each guest has a single point of contact to finesse the details. Our statement spaces are just the starting point – to ensure everyone feels at home, our rates include:

- Weekly housekeeping
- Flexible check-in/out
- Luxury linens and Bamford toiletries
- Legal compliance on all our homes
- A personal welcome and arrival essentials
- Unlimited access to guest services and tailored experiences
- Professional inventory inspection before and after every stay
- Access to a curated portfolio of sole agency properties



domus stay.

Please get in touch if you have any questions
or require any further information.

hello@domusstay.com

+44 (0)20 8168 8880

The property particulars are a guide not statements. Descriptions, photographs, and plans are for guidance only. The Property is offered "subject to contract and references". No warranties, representations, License or Tenancy is given by Domus Stay. Our full disclaimer together with trading names and our Privacy Policy is shown on our website

© Domus Stay 2025. All rights reserved.

