

domus
stay.

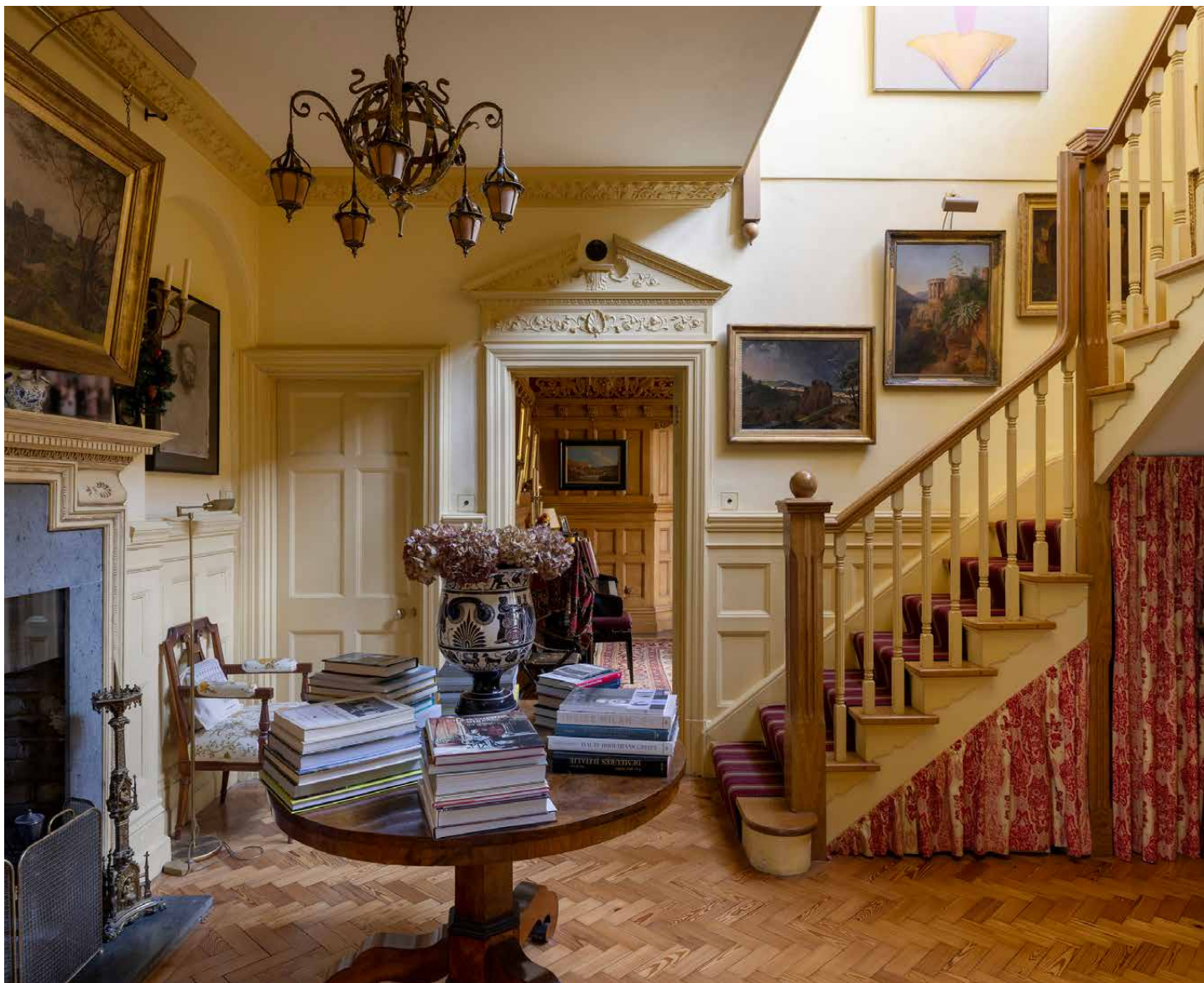
Woodborough Lodge

PUTNEY

3 Bedrooms, 4 Bathrooms
For 6 guests







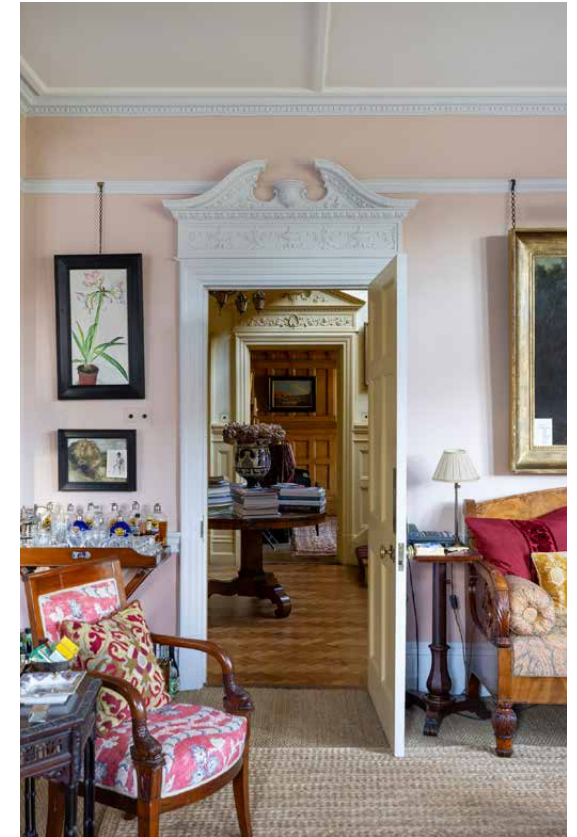
A grand three-bedroom heritage house to rent on one of Putney's most discreet residential roads.

Hidden behind a veil of greenery and a gated entrance, this impressive redbrick residence reveals itself with impact. Rich in period detail – intricate woodwork, heritage features and original fireplaces – there's a captivating sense of a lived-in film set. Antiques and artwork sit effortlessly within the architecture, while generous proportions invite gathering or retreat across a music room, layered living spaces and private gardens to the front and rear.

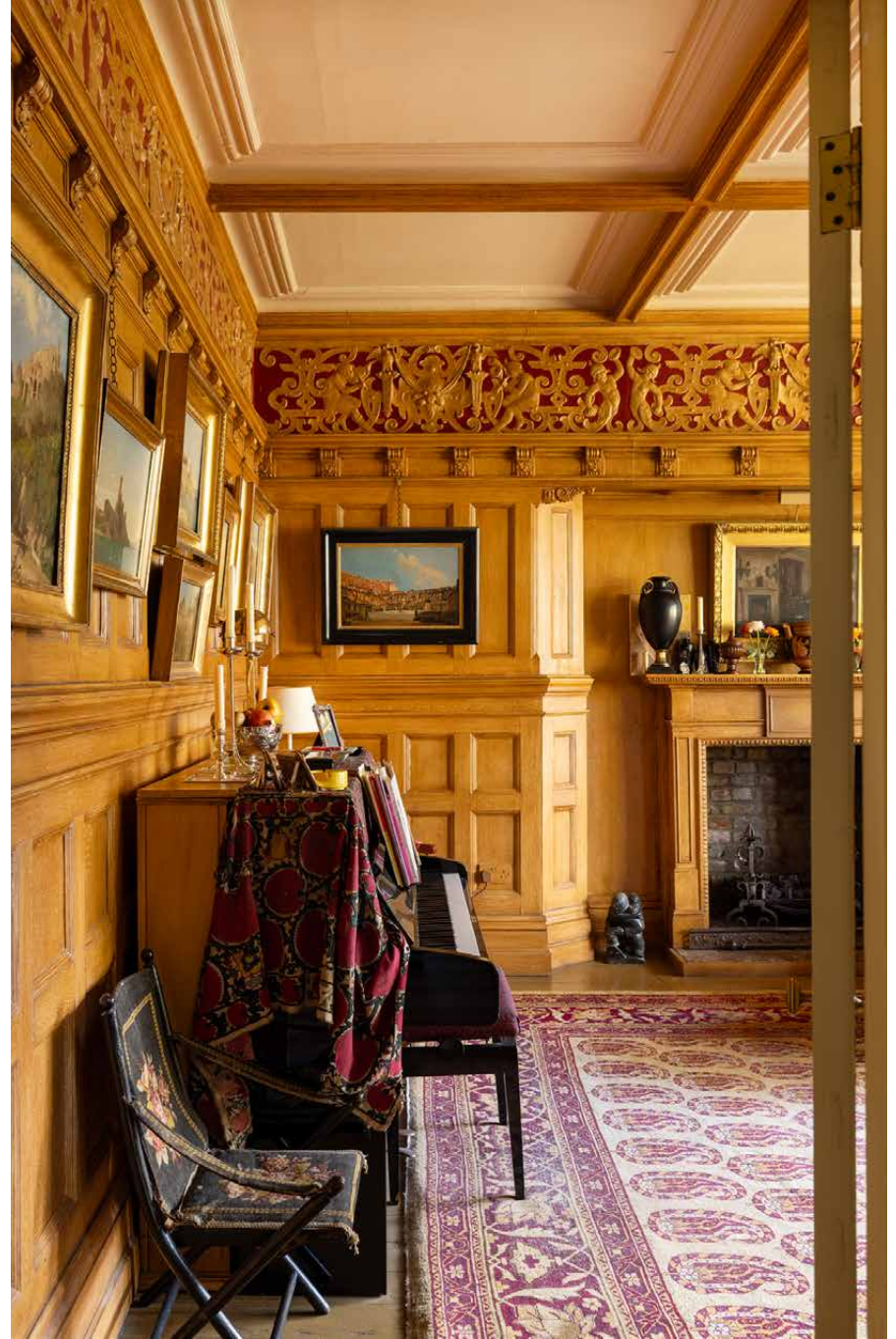
The living spaces

Traditional eclecticism takes over in the reception room, where soft blush walls frame a spacious double setting. It's filled with characterful artwork, well-stocked bookcases and inviting soft furnishings that sit around one of the home's many fireplaces. A large bay window draws in light, offering leafy views out across the picturesque front garden.

Elsewhere, a versatile music room offers a more contemplative mood. Intricately carved wood panelling wraps the space, while a curved window seat set into the bay serves as a natural spot to read, work or recline as the piano fills the room.











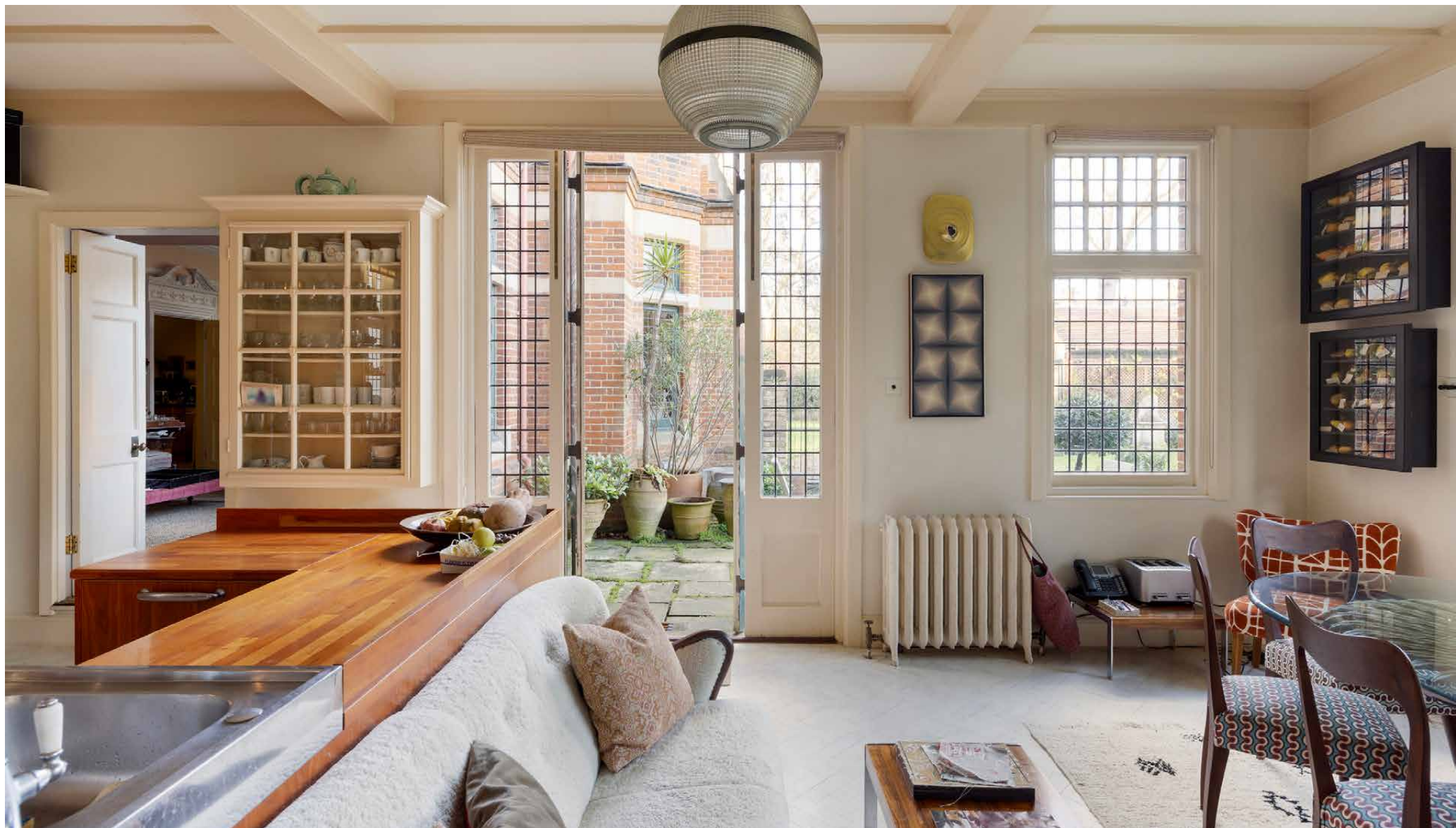
Kitchen & dining

Light-filled and thoughtfully arranged, the kitchen and dining room brings contemporary practicality to the traditional outlook. Warm wood cabinetry anchors the room, arranged to ensure cooks are always part of the conversation. Two Miele ovens, stainless steel splashbacks and refined details elevate the experience.

At the centre, a dark wood oval dining table seats eight, while a log burner within the fireplace adds a cosy counterpoint. A door here opens directly onto the garden, forming an easy indoor-outdoor flow.







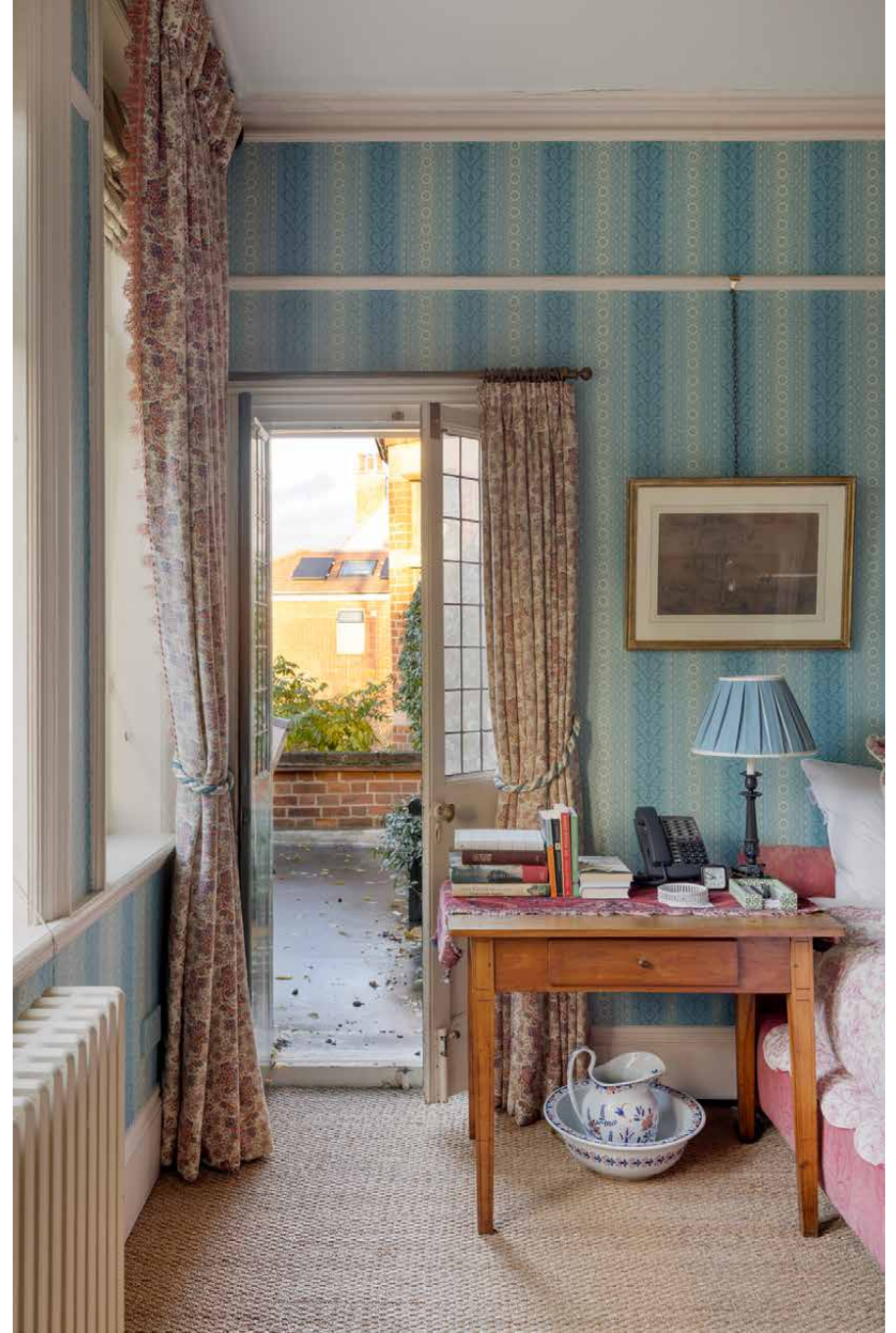
Bedrooms & bathrooms

Come evening, three bedrooms bring a calming air to the home's heritage grandeur. The principal bedroom is bright and enveloping, fitted with floral wallpaper, a decorative wood fireplace and a brass chandelier. Two walk-in wardrobes lead through to a serene en suite bathroom with a generous bathtub.

Alongside, a guest bedroom suite features baby-blue striped wallpaper and a plush bed positioned opposite the fireplace. An en suite shower room and access to a private balcony make it ideal for visiting friends or family. The third bedroom is pared back and restful, with a teal-tiled fireplace and a desk for quiet work or study.









Outdoor space

Green space is abundant at Woodborough Lodge. The home is greeted by picturesque front gardens, while a sprawling lawn unfolds to the rear. A dedicated dining patio and scattered seating areas make it easy to follow the sun, whether hosting long lunches or enjoying quieter moments outdoors.



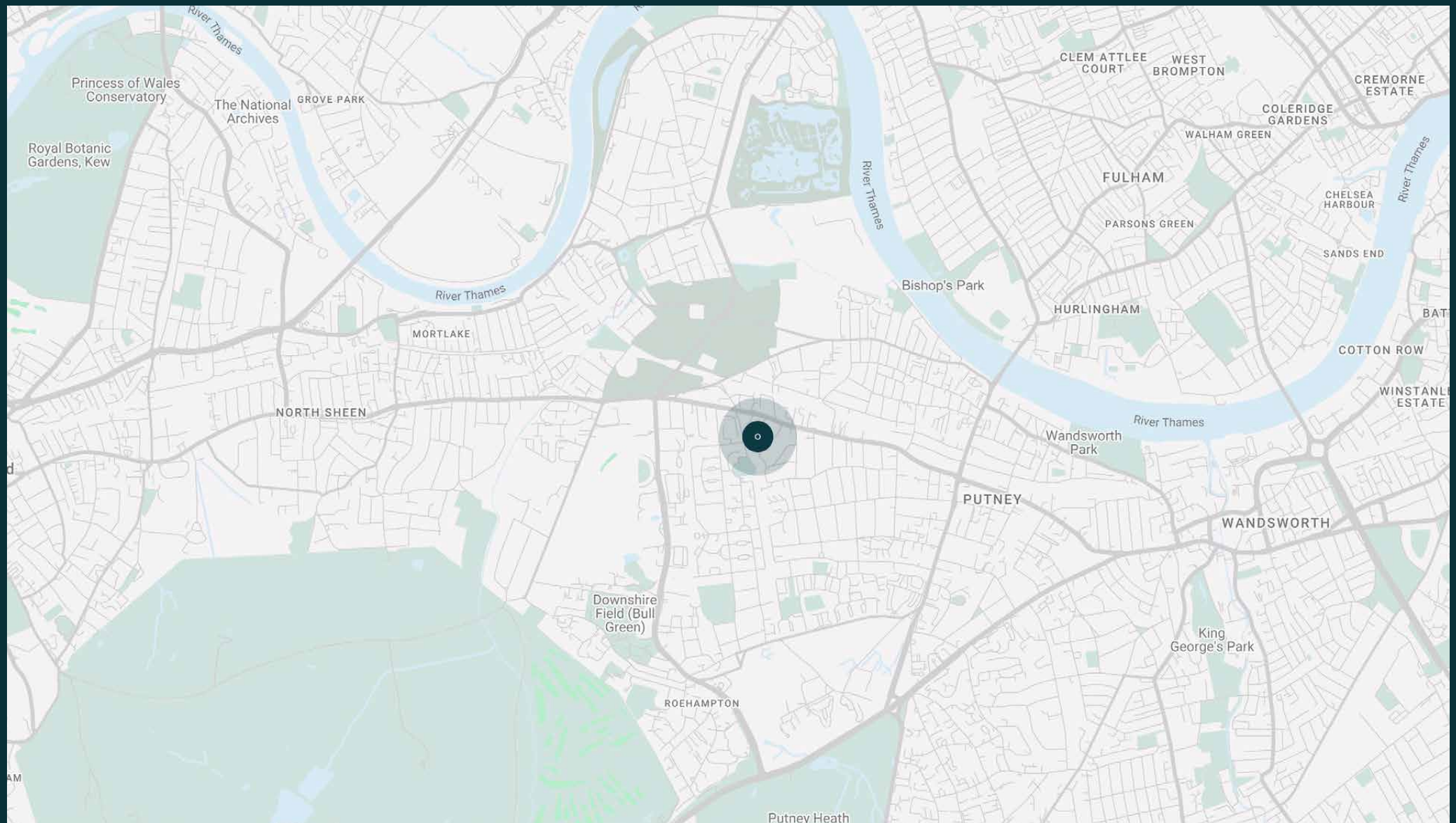






The neighbourhood

Woodborough Road is one of Putney's most peaceful addresses, moments from the open greenery of Putney Heath and within easy reach of the Thames Path for riverside walks and weekend strolls. Putney High Street is close by, offering a mix of independent boutiques and well-regarded spots. Try Gazette Putney for relaxed French dining or the riverside Duke's Head – a local favourite for pub lunches with a view. Rowing clubs, tennis courts and wide green spaces lend the area an active, village-like feel.



Property features

- Open-plan kitchen and dining room
- Double reception room
- Versatile second reception room
- Principal bedroom suite with two walk-in wardrobes
- Guest bedroom suite
- One further bedroom
- Utility room
- Large private gardens to the front and rear
- Outdoor dining patio
- Shower room
- Cloakroom

Approx. 1,257 sq ft / 116 sq m



Guest & concierge services

Our concierge team are here to help guests settle in, seamlessly. Centre court tickets to Wimbledon, Premier League seats with the best views, Savile Row tailors on standby, or a private chef to cater to individual tastes – we aim to elevate every stay.

From the moment of booking with us, each guest has a single point of contact to finesse the details. Our statement spaces are just the starting point – to ensure everyone feels at home, our rates include:

-
- Weekly housekeeping
 - Flexible check-in/out
 - Luxury linens and Bamford toiletries
 - Legal compliance on all our homes
 - A personal welcome and arrival essentials
 - Unlimited access to guest services and tailored experiences
 - Professional inventory inspection before and after every stay
 - Access to a curated portfolio of sole agency properties





Please get in touch if you have any questions
or require any further information.

hello@domusstay.com

+44 (0)20 8168 8880

The property particulars are a guide not statements. Descriptions, photographs, and plans are for guidance only. The Property is offered "subject to contract and references". No warranties, representations, License or Tenancy is given by Domus Stay. Our full disclaimer together with trading names and our Privacy Policy is shown on our website

© Domus Stay 2025. All rights reserved.

