

domus  
stay.

---

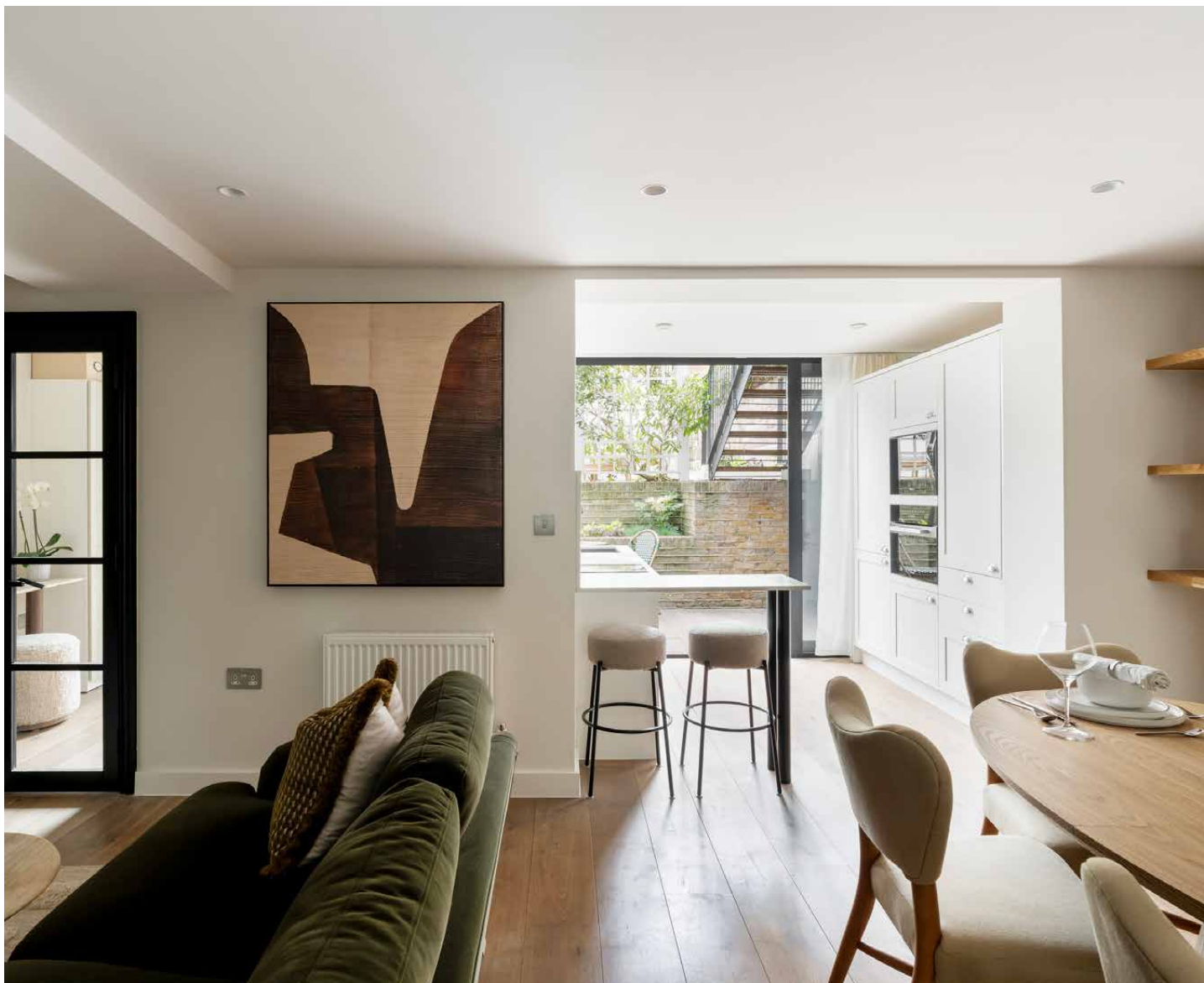
## Westbourne Park Road

NOTTING HILL

2 Bedrooms, 2 Bathrooms  
For 4 guests

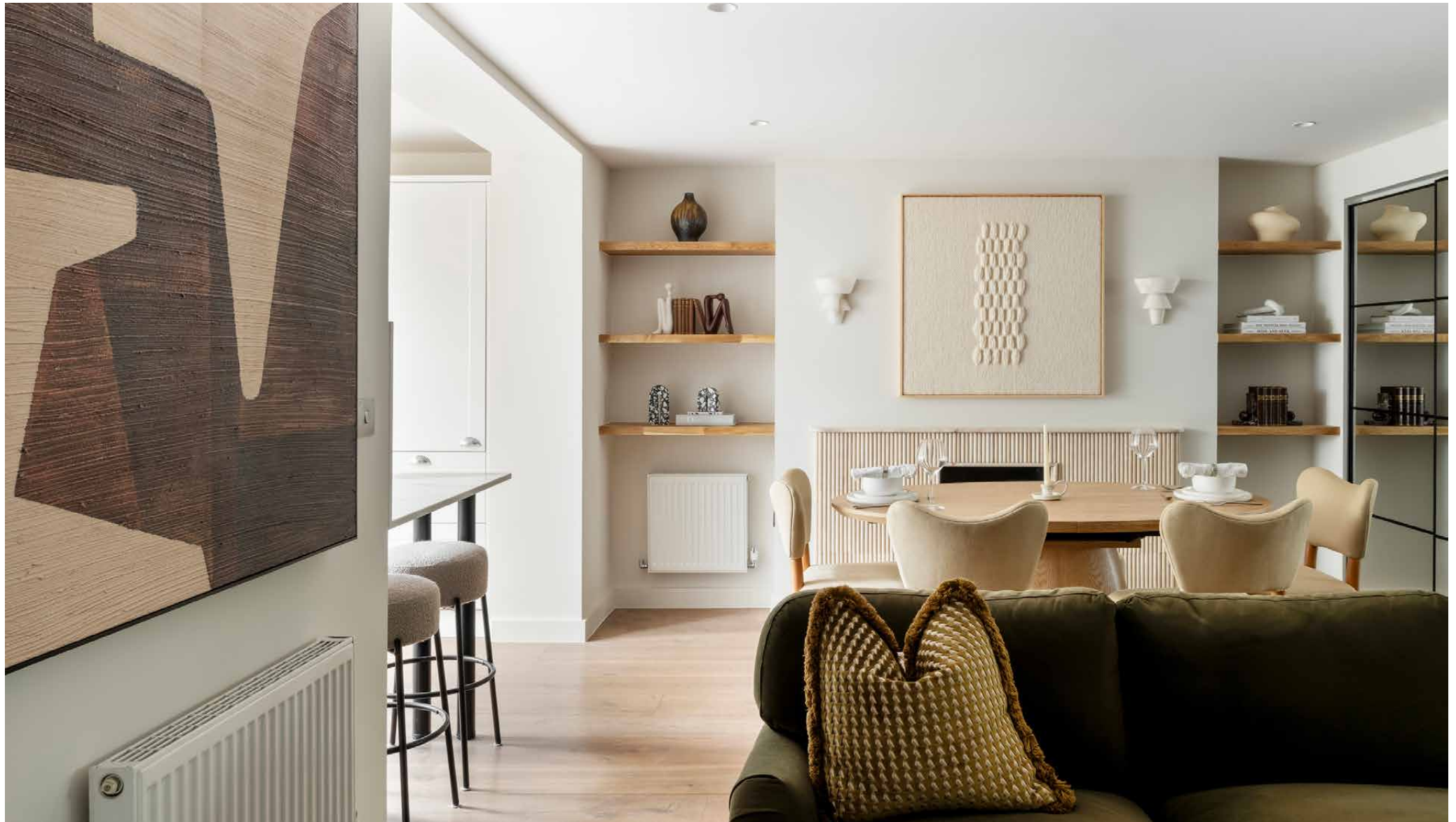
---





This interior-designed apartment to rent brings together warmth, artistry and a private patio garden.

Tucked into the garden level of a handsome pastel townhouse, this two-bedroom apartment has been designed with a discerning eye. Natural materials, a considered palette and an unexpected brightness runs through every room – expect picture-perfect spaces that feel as good as they look. Outdoors, a split-level patio garden caters to warmer weather interludes.

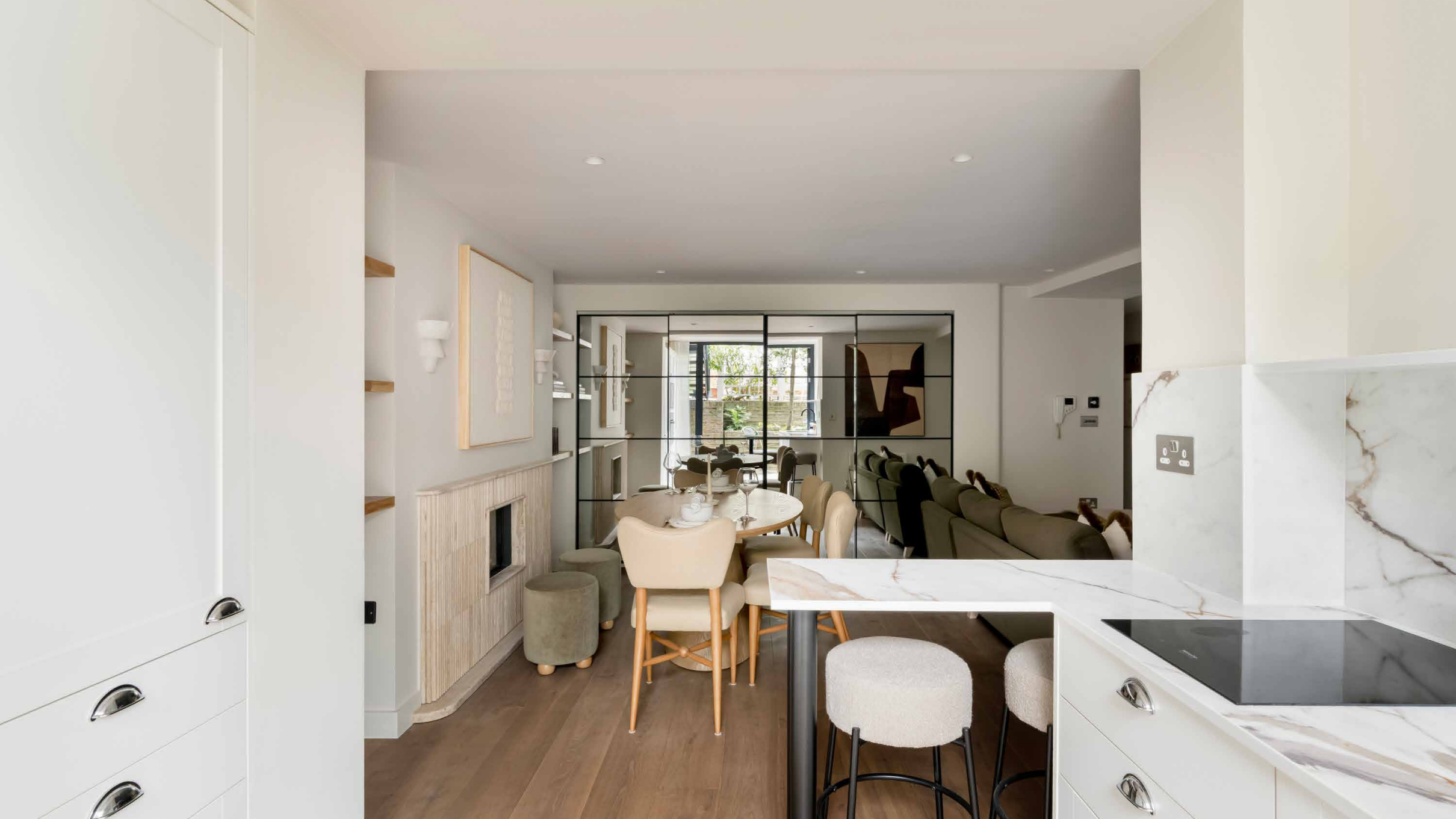


# The living spaces

The open-plan living, dining and kitchen area is the beating heart of the apartment. A deep green velvet sofa anchors the sitting area, an invitation to kick back with a film on the concealed mirror-screen TV. Artwork hangs confidently by the dining table opposite; switch on the fireplace below for elevated home dining.

A marble-topped island blurs the boundary with the kitchen, where boucle bar stools offer a perch to sip coffee or observe chefs at work. White shaker cabinetry pairs with Calacatta marble worktops; a sleek induction hob and integrated double Miele ovens speak to serious cooking credentials.







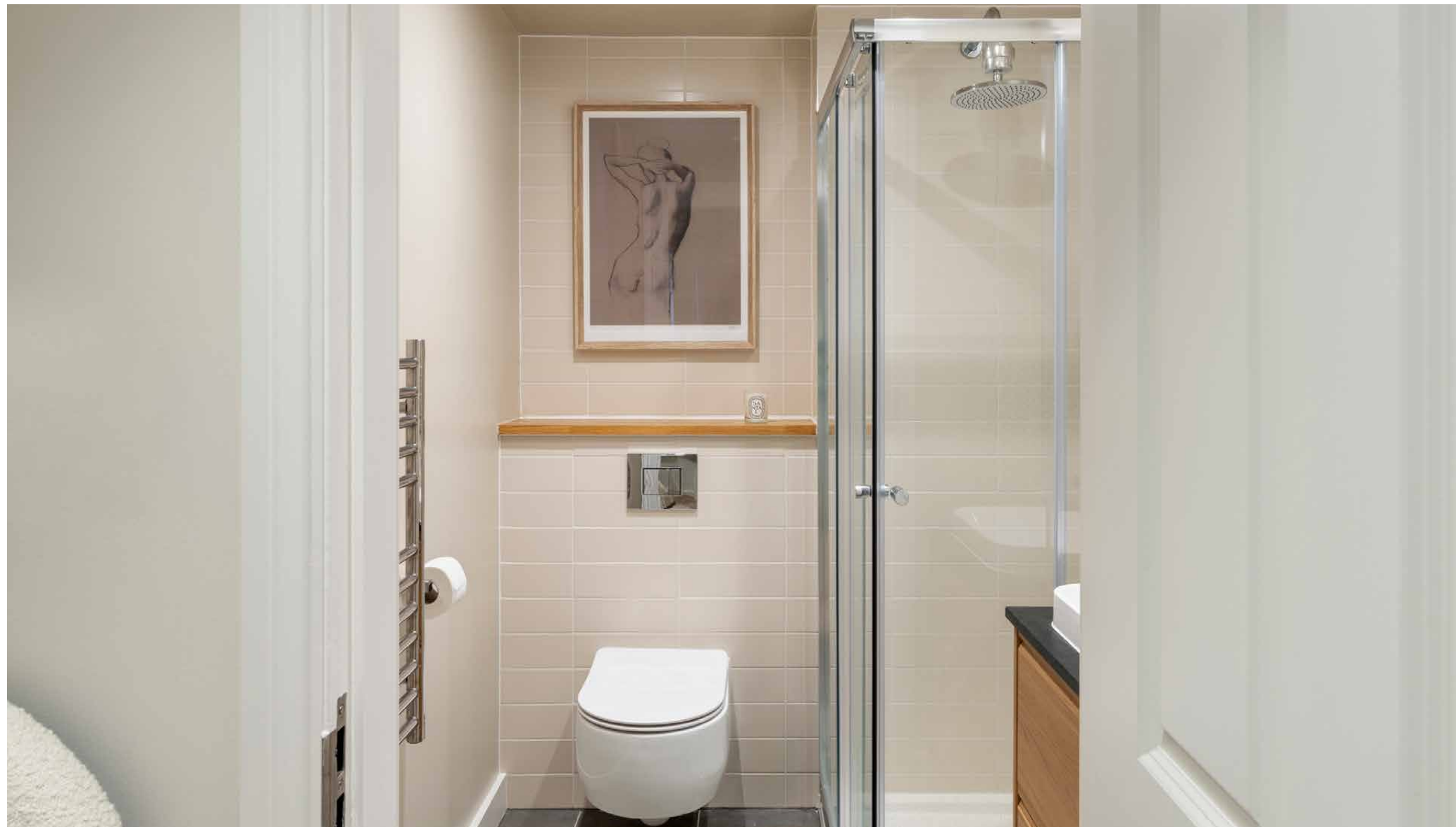


## Bedrooms & bathrooms

The principal bedroom is calm and generous – original sash bay windows let in plenty of light, while floor-to-ceiling fitted wardrobes keep things serene. Bedding in soft, earthy tones completes the mood. Its ensuite bathroom is well-appointed throughout – a warm wood vanity unit and rainfall shower.

The second bedroom enjoys direct access to the lower terrace via its own door, alongside fitted storage and a narrow vanity table. A family bathroom serves this room, fitted with a bathtub and overhead shower.









## Outdoor space

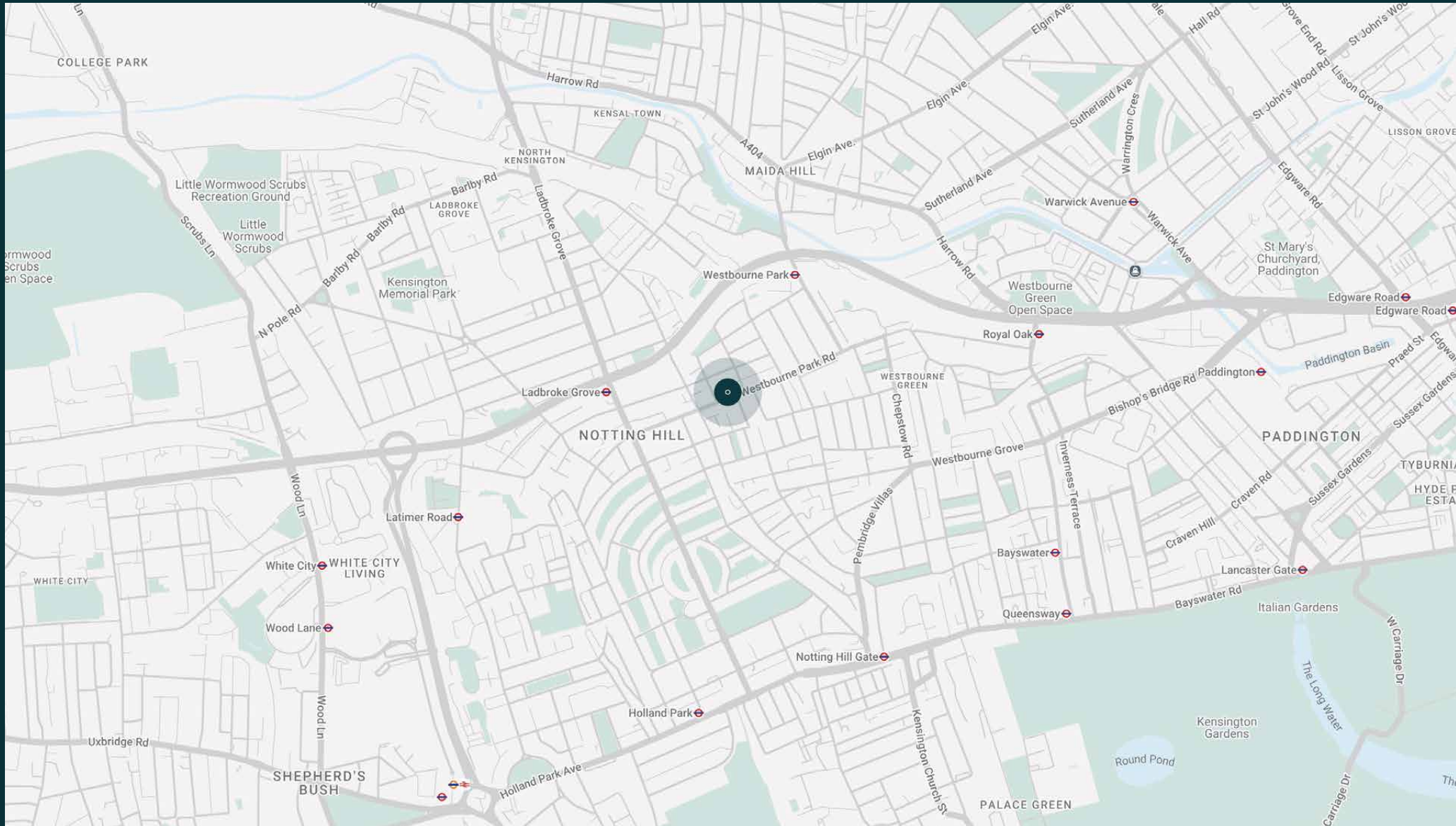
Outside, the apartment reveals its most unexpected asset. A private patio has been thoughtfully furnished: a bistro table for two sits on the lower level, while steps ascend to a second level with an outdoor sofa.



# The neighbourhood

Westbourne Park Road is a springboard to Notting Hill's most vibrant offerings. Just seconds from Portobello Road, there's a host of antiques shops and market stalls to explore, leading to London's oldest working picture house, the Electric Cinema. Start the mornings with a workout at SoulCycle or Barrecore, followed by brunch at Granger & Co. on Westbourne Grove. The Michelin Bib Gourmand Empire Empire is on your doorstep for dining out, plus a host of local favourites: The Pelican, The Cow and The Ledbury to name a few. The Underground is close to ferry you into central London and beyond.

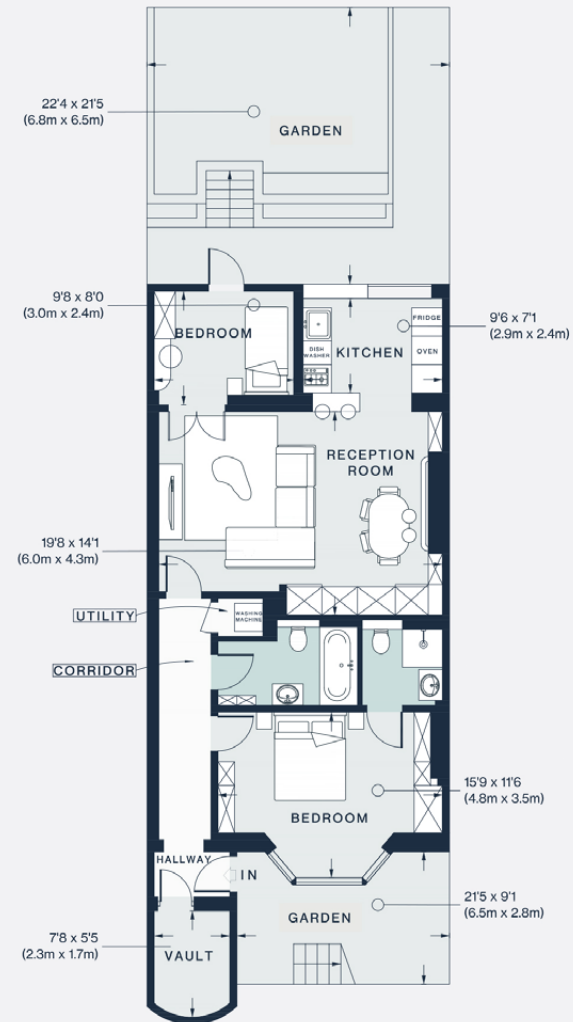




# Property features

- Open-plan dining and reception room
- Contemporary kitchen with direct patio access
- Principal bedroom suite with fitted storage
- Guest bedroom with integrated wardrobes
- Split-level patio garden
- Family bathroom

Approx. 1,257 sq ft / 116 sq m



Approx. Gross Internal Area = 834 sq ft / 77.5 sq m (Including Vault)

Floor plans are for illustrative purposes only and not to scale. Compliant with RICS code of measuring practice.  
Prepared for Domus Stay. Copyright © All Rights Reserved.

# Guest & concierge services

Our concierge team are here to help guests settle in, seamlessly. Centre court tickets to Wimbledon, Premier League seats with the best views, Savile Row tailors on standby, or a private chef to cater to individual tastes – we aim to elevate every stay.

From the moment of booking with us, each guest has a single point of contact to finesse the details. Our statement spaces are just the starting point – to ensure everyone feels at home, our rates include:

- Weekly housekeeping
- Flexible check-in/out
- Luxury linens and Bamford toiletries
- Legal compliance on all our homes
- A personal welcome and arrival essentials
- Unlimited access to guest services and tailored experiences
- Professional inventory inspection before and after every stay
- Access to a curated portfolio of sole agency properties



# domus stay.

Please get in touch if you have any questions  
or require any further information.

[hello@domusstay.com](mailto:hello@domusstay.com)

+44 (0)20 8168 8880

The property particulars are a guide not statements. Descriptions, photographs, and plans are for guidance only. The Property is offered "subject to contract and references". No warranties, representations, License or Tenancy is given by Domus Stay. Our full disclaimer together with trading names and our Privacy Policy is shown on our website

© Domus Stay 2025. All rights reserved.

