

domus  
stay.

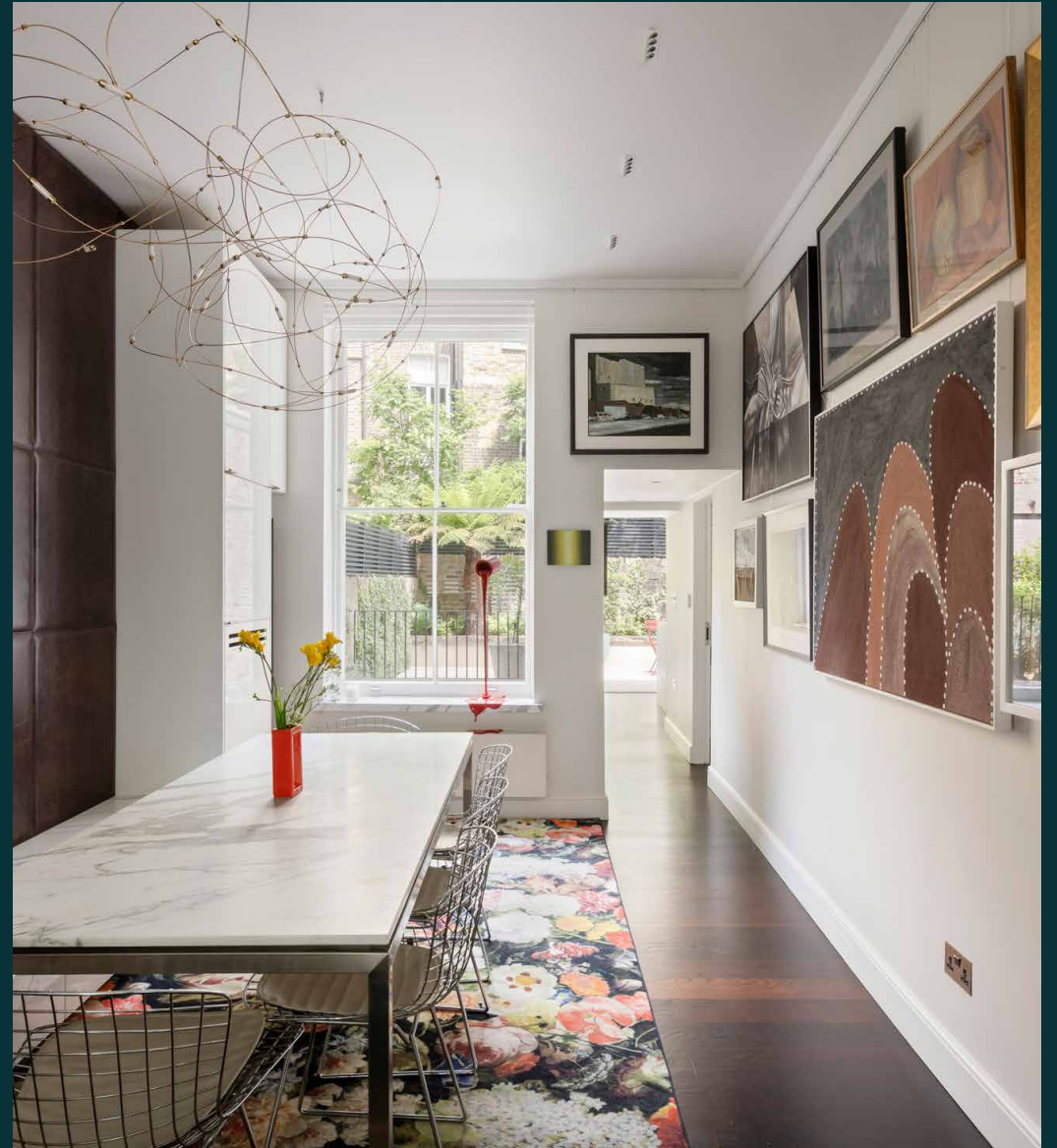
---

## Westbourne Gardens

NOTTING HILL

3 Bedrooms, 3 Bathrooms  
For 6 guests

---



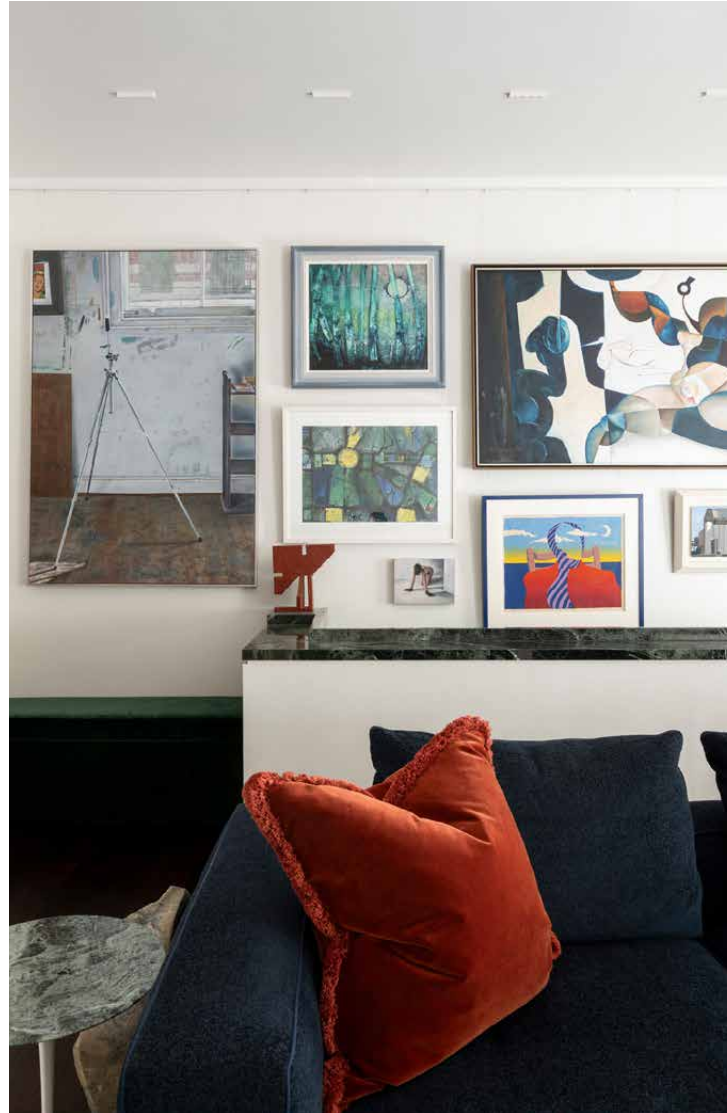


## Part home, part gallery, this two-bedroom apartment for rent brings a dash of La Dolce Vita to Notting Hill.

West London, with a Roman accent. Set within a historic townhouse, this transportive apartment layers classic architecture with bold contemporary design – lashings of marble, sculptural lighting and curated artwork throughout. Days move easily here: work from the study, settle around the marble kitchen island, then follow lunch onto the terrace or the leafy residents' garden beyond.

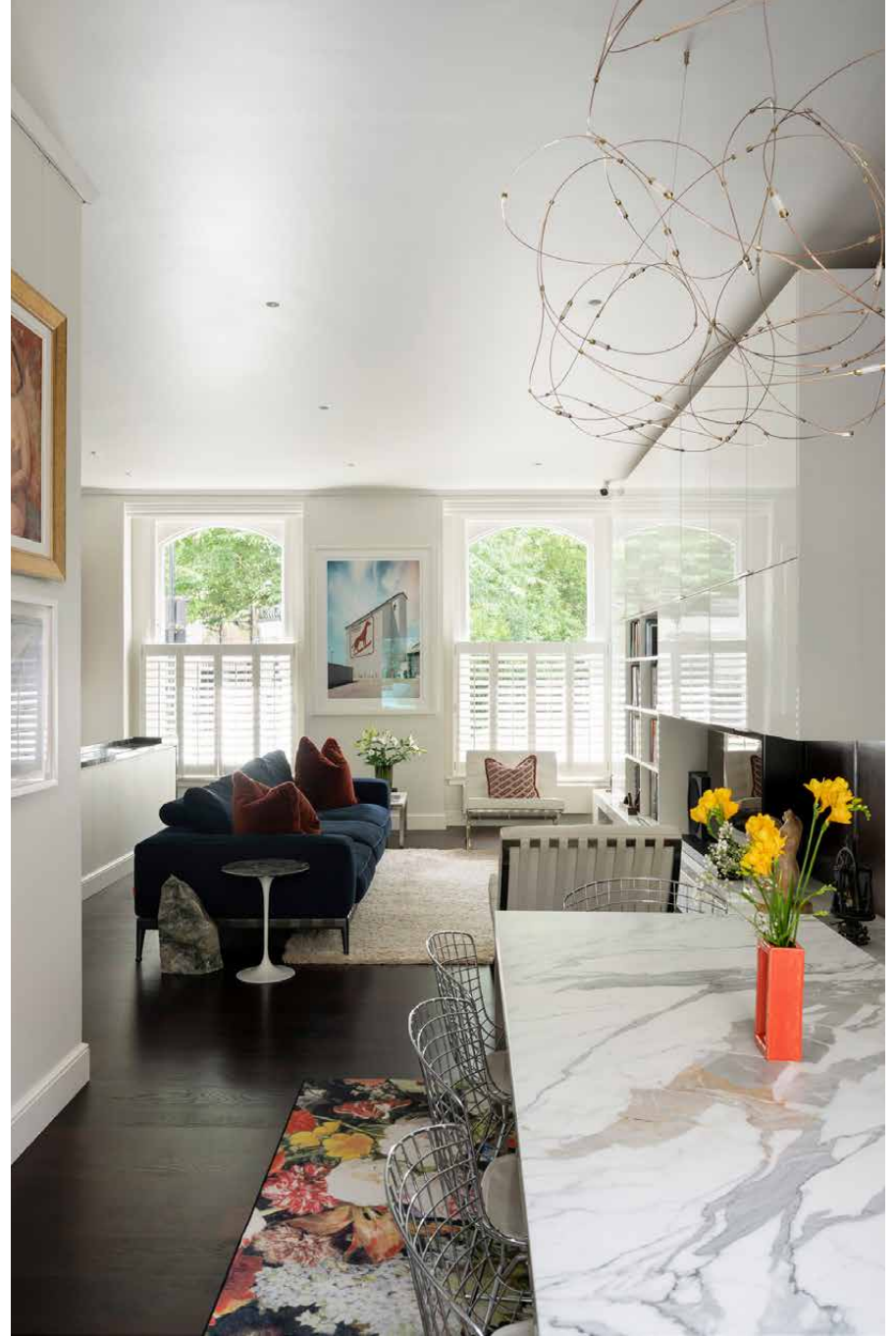
# The living spaces

From the moment you step inside, craftsmanship comes to the fore. Architects AFK Studios have drawn out the period proportions while giving each space a polished, design-led edge. In the living room, light travels in from both front and back, lifting gallery-white walls, minimalist leather armchairs and mid-century silhouettes. A Carrara marble ledge runs the length of the room, subtly separating living and dining, while lacquered floor-to-ceiling cabinetry creates a sleek media wall. Around it all, rich textures bring warmth: aubergine leather panelling, green-veined marble, dark timber floors and artwork that gives the space its quietly collected feel.





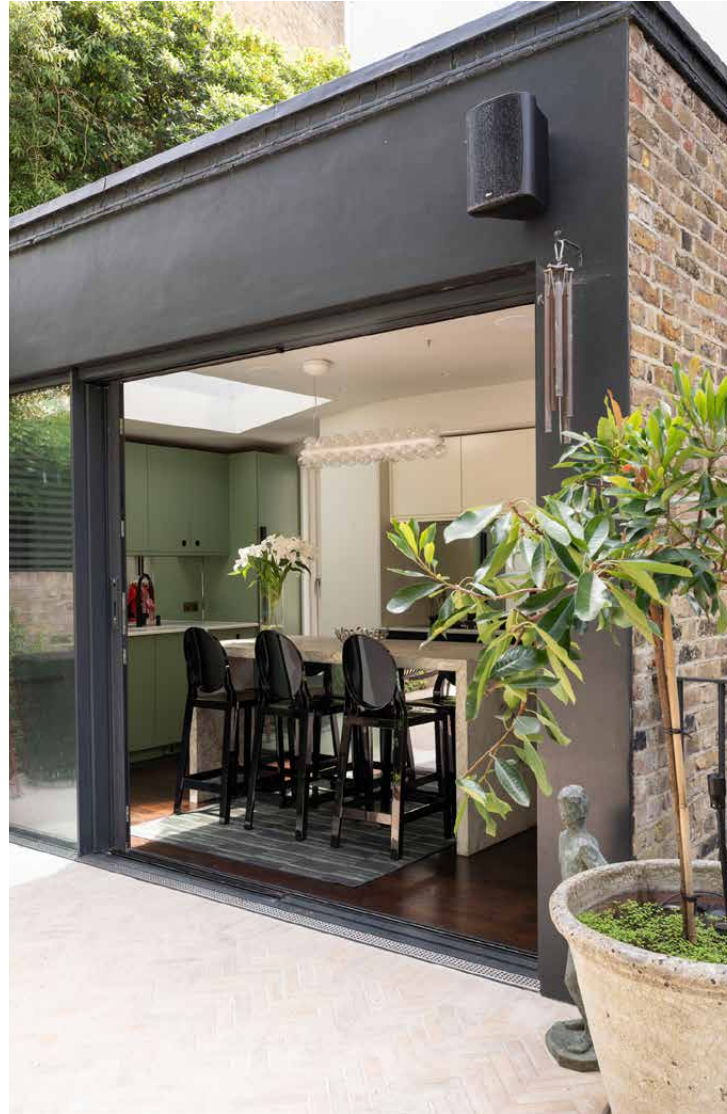




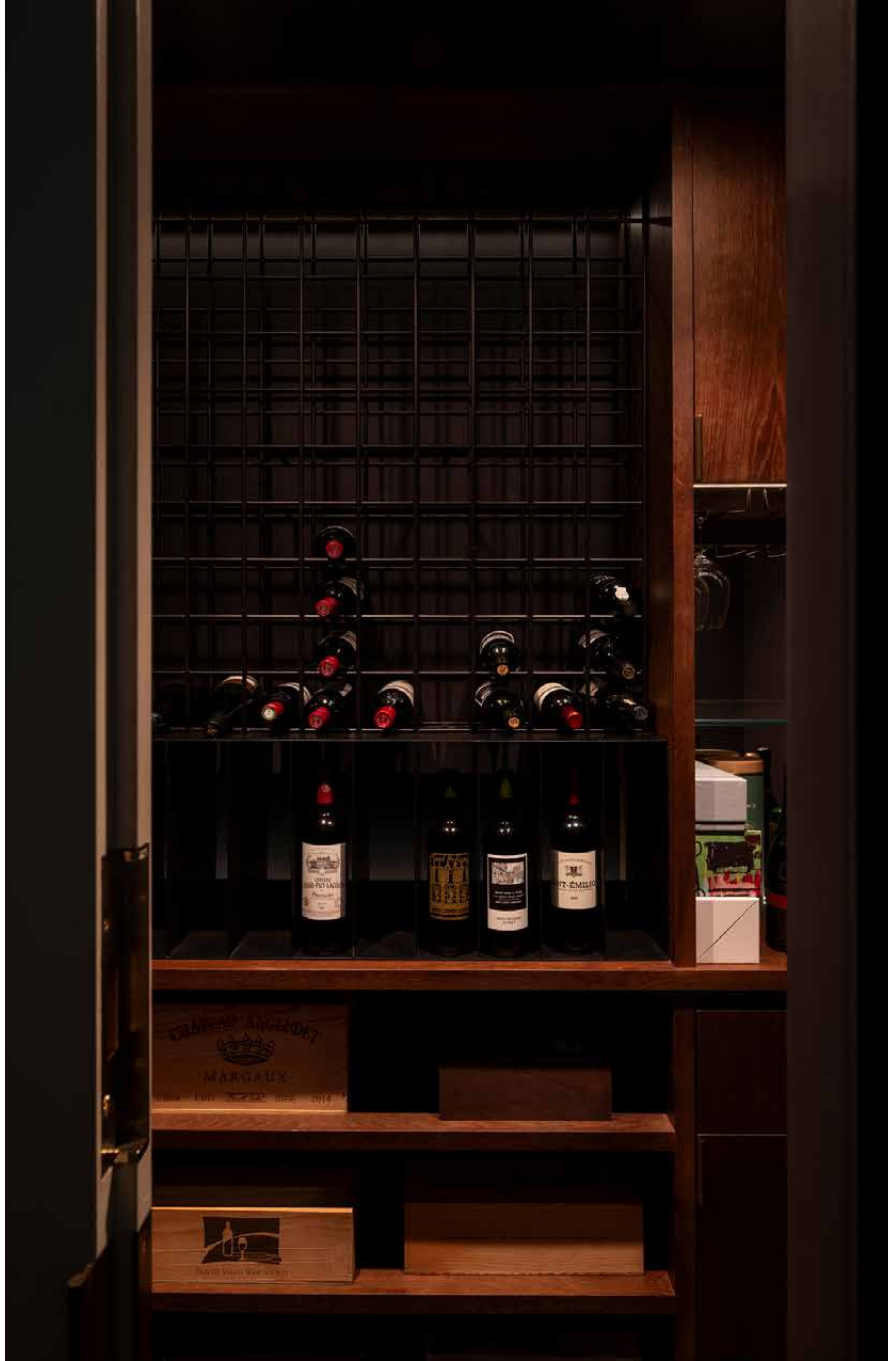
## Kitchen & dining

The kitchen continues the mood with pistachio cabinetry, mirrored splashbacks and a marble island made for gathering. It's a space that works just as well for slow breakfasts as it does for evenings in – Miele double ovens and hob for the keen cook, stools for company and a skylight drawing brightness from above. Wide bi-fold doors open onto a shaded terrace, where herringbone paving, planted borders and leafy cover create an easy setting for morning coffee or low-lit drinks with the outdoor speaker on.

For more formal dinners, the eight-seater table in the living space sets the scene. Pull a bottle from the illuminated wine cellar below and settle into the metal wire chairs, as the mood shifts from gallery-like calm to something more convivial.





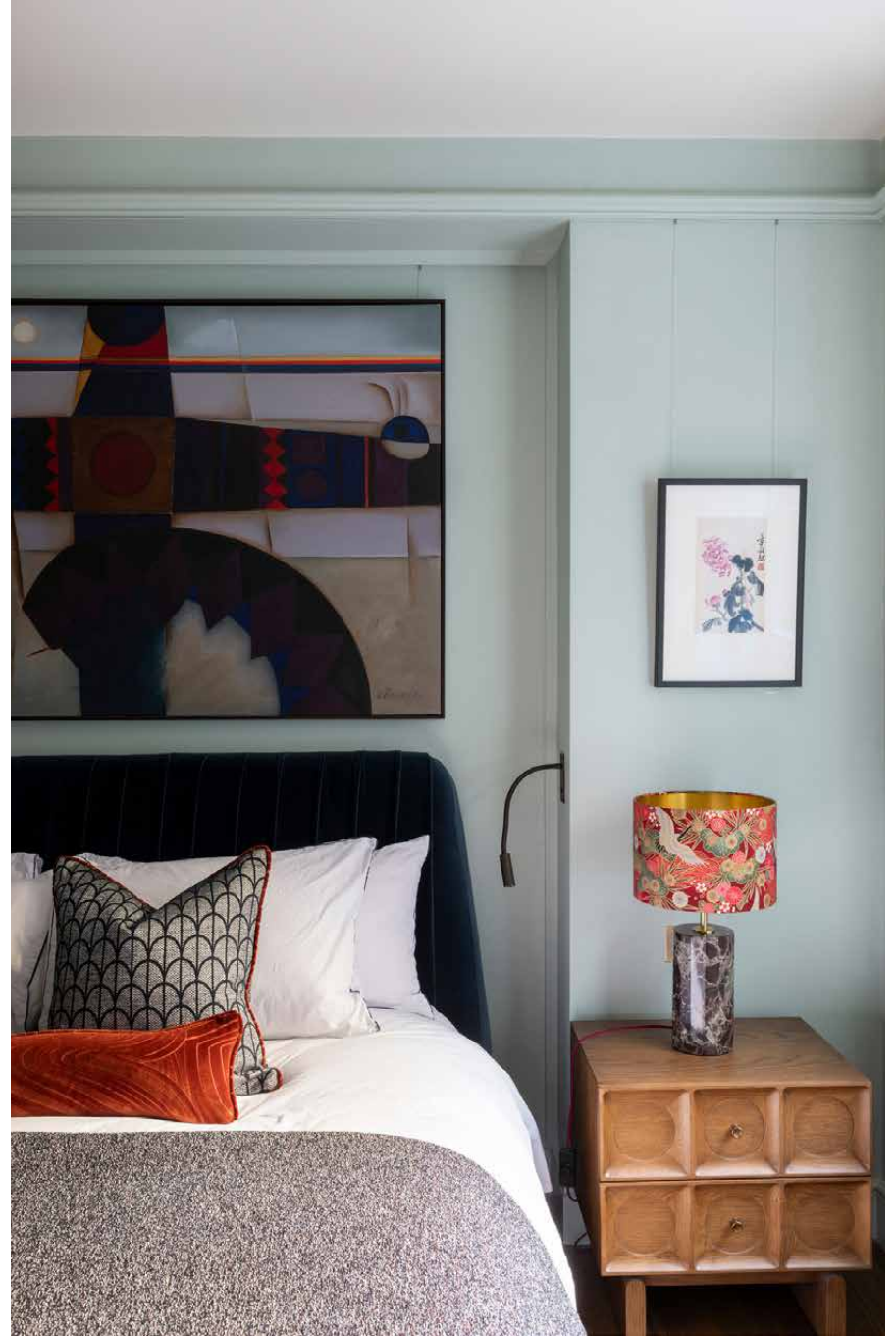




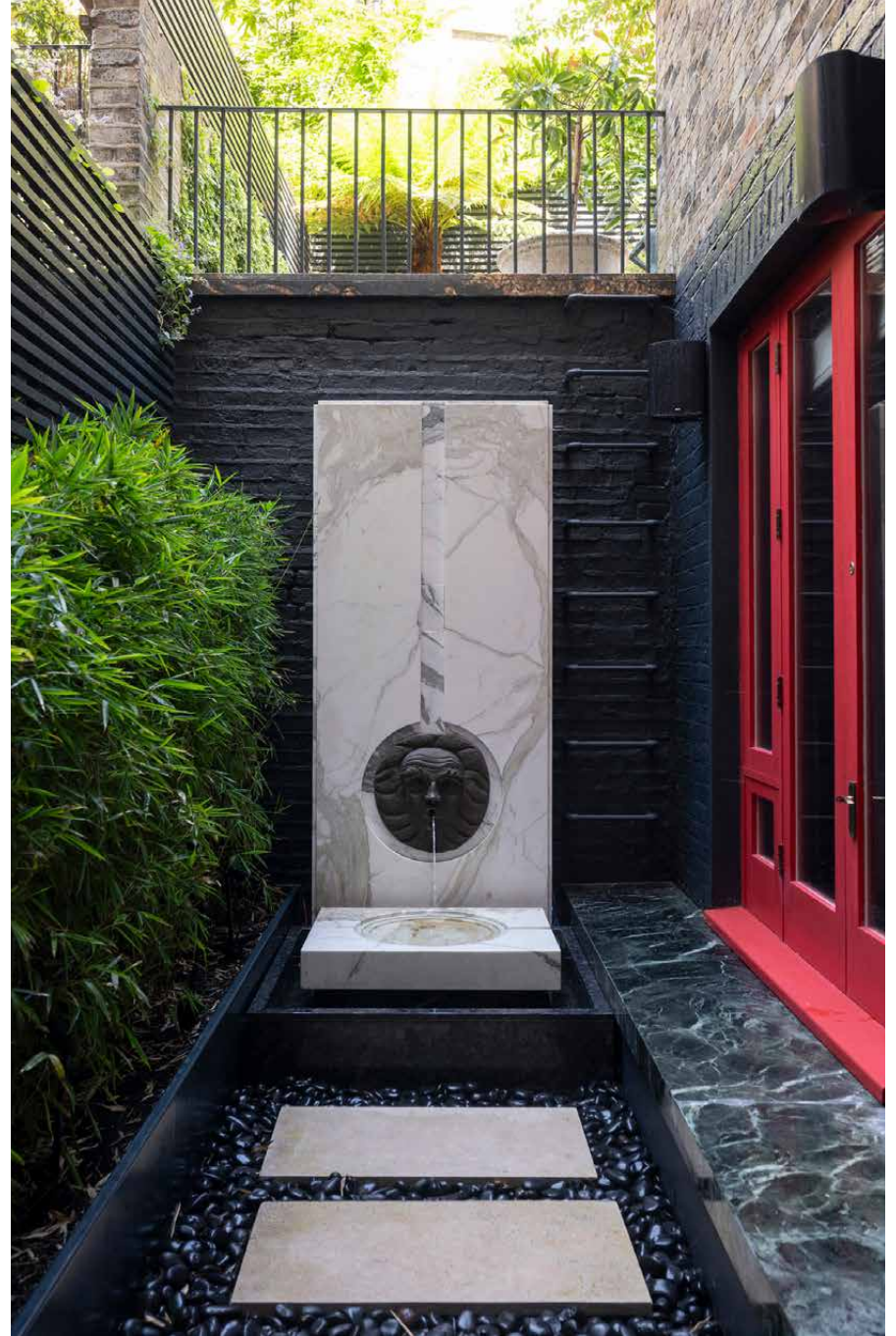
## Bedrooms & bathrooms

Downstairs, the bedrooms carry the same sense of finesse. The principal is quietly cocooning, with pistachio-toned walls, a velvet upholstered bed and a green-marble trimmed windowsill. Fitted wardrobes keep the room uncluttered, while the en suite brings a moodier note: black marble, bottle green tiles, terrazzo flooring and a generous walk-in shower.

The second bedroom opens directly onto a sunken courtyard, reached by a marble step and vivid, red-framed doors. Earth-toned tiles and a deep red ceiling give the adjoining bathroom an architectural feel. Outside, the courtyard has the air of an Italian palazzo, complete with a stone water feature – a calming soundtrack around the clock.









A dedicated study adds further flexibility as a third bedroom. Wrapped in floral-patterned wallpaper, with a wall-to-wall desk and bookshelves, it offers an atmospheric place to work or take calls. Beyond double doors, a dramatic spa-like bathroom brings an indulgent flourish, with a Rosso Levanto-wrapped sunken bathtub and low lighting designed for a complete switch-off.





## Outdoor space

Outdoor space is woven into the experience throughout. There's the shaded terrace off the kitchen for relaxed gatherings, the sunken courtyard off the guest bedroom for quiet retreat, and access to Westbourne Gardens itself – a leafy residents' garden that gives this Notting Hill home an added sense of privacy and escape.

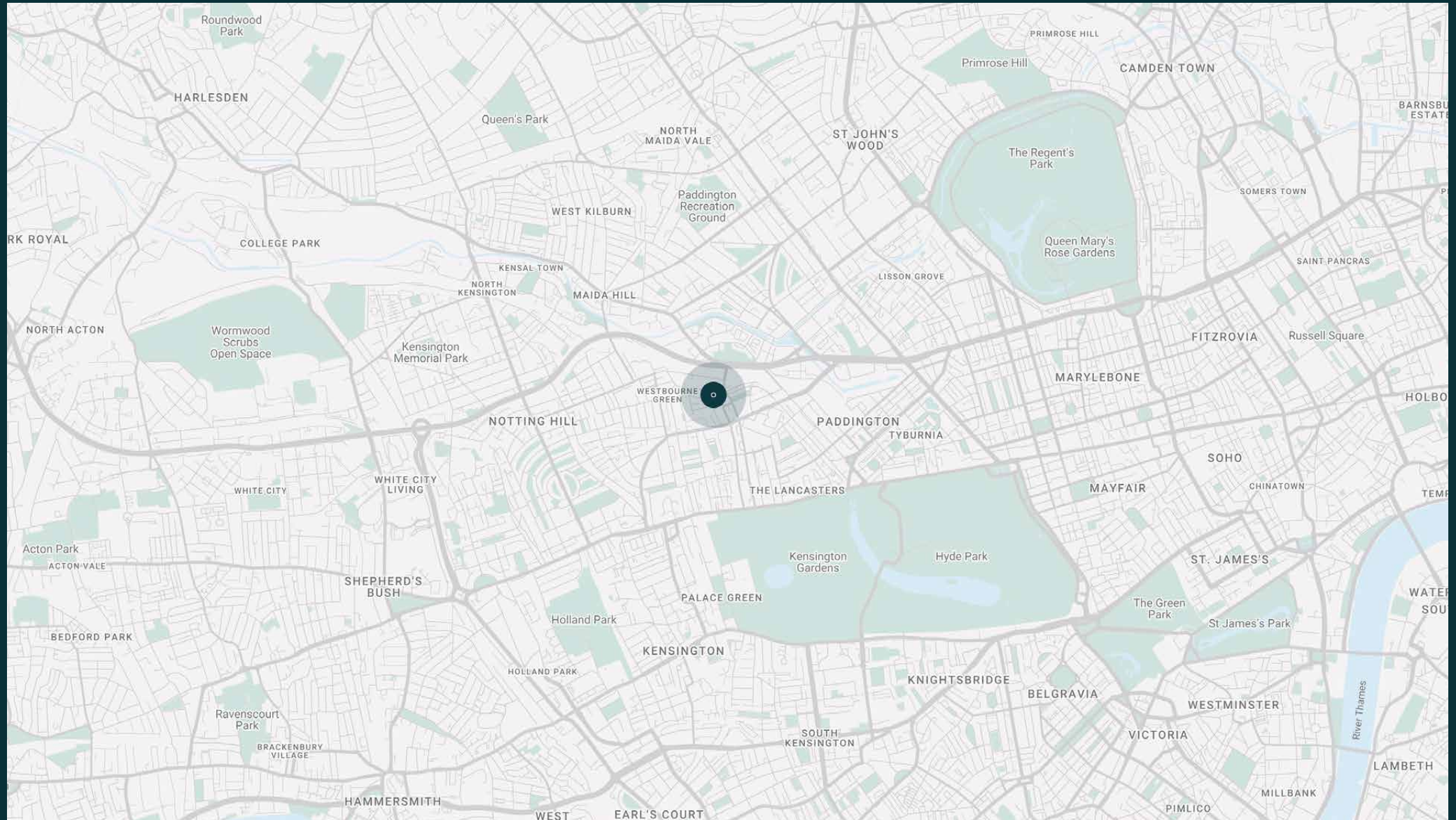




# The neighbourhood

Westbourne Park Road is a springboard to Notting Hill's most vibrant offerings. Within strolling distance of Westbourne Grove and Portobello Road, antiques shops and market stalls line the streets, leading to London's oldest working picture house, the Electric Cinema. Start the morning with a workout at Body Works West before settling in for brunch at Beam. Come evening, sought-after dining destinations are on your doorstep, from Dorian to longstanding local favourites including The Cow, The Good Oak and The Ledbury. When it's time to venture further afield, nearby Underground stations connect you to central London and beyond.





# Property features

- Architecture by AFK Studios
- Light-filled double reception and dining room
- Separate kitchen with a marble island
- Principal bedroom suite
- Guest bedroom suite-cum-study
- Guest bedroom with courtyard access
- Shower room
- Dedicated wine storage
- Terrace, fountain courtyard and access to communal gardens

---

Approx. 1,643 sq ft / 153 sq m



# Guest & concierge services

Our concierge team are here to help guests settle in, seamlessly. Centre court tickets to Wimbledon, Premier League seats with the best views, Savile Row tailors on standby, or a private chef to cater to individual tastes – we aim to elevate every stay.

From the moment of booking with us, each guest has a single point of contact to finesse the details. Our statement spaces are just the starting point – to ensure everyone feels at home, our rates include:

- Weekly housekeeping
- Flexible check-in/out
- Luxury linens and Bamford toiletries
- Legal compliance on all our homes
- A personal welcome and arrival essentials
- Unlimited access to guest services and tailored experiences
- Professional inventory inspection before and after every stay
- Access to a curated portfolio of sole agency properties



# domus stay.

Please get in touch if you have any questions  
or require any further information.

---

[hello@domusstay.com](mailto:hello@domusstay.com)

+44 (0)20 8168 8880

The property particulars are a guide not statements. Descriptions, photographs, and plans are for guidance only. The Property is offered "subject to contract and references". No warranties, representations, License or Tenancy is given by Domus Stay. Our full disclaimer together with trading names and our Privacy Policy is shown on our website

© Domus Stay 2025. All rights reserved.

