

domus  
stay.

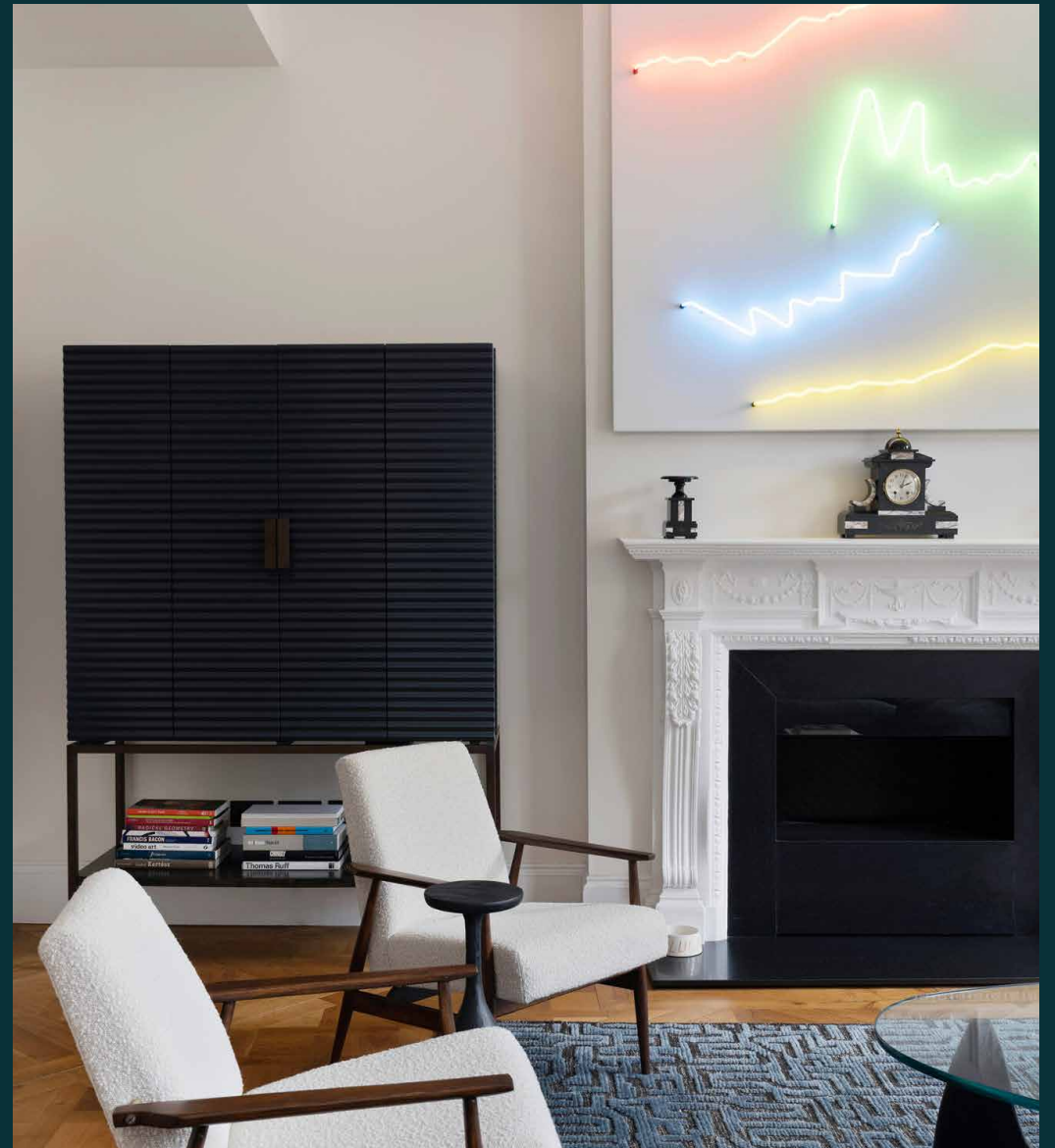
---

## Sunderland Terrace II

NOTTING HILL

2 Bedrooms, 2 Bathrooms  
For 4 guests

---





Spacious in design and creative in feel, this reimagined apartment is a haven for those who appreciate art.

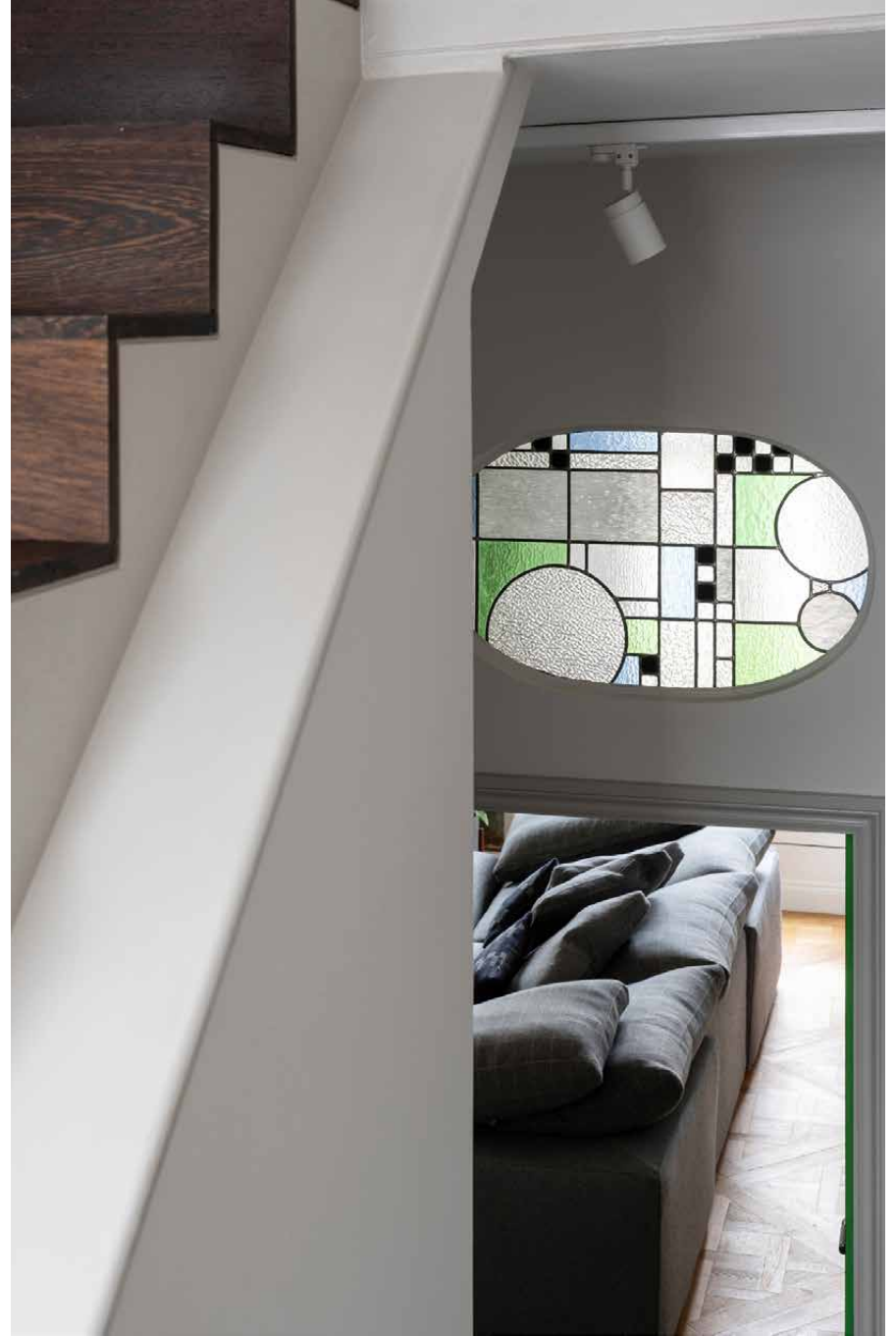
Among smart, tree-lined Sunderland Terrace, Jette Anderson Interiors has brought a contemporary update to this period home. Behind a stucco façade and portico-fronted door, natural light washes through open-plan spaces, illuminating a curated selection of artwork and furnishings.







“ Among the vibrant collection, a bespoke neon light piece conjures a thoughtful contrast with the period fireplace.



# Living spaces

Set up to mimic a gallery, the reception room's white-toned walls are a canvas for eclectic prints and original masterpieces. Among the vibrant collection, a bespoke neon light piece conjures a thoughtful contrast with the period fireplace. Sink into the expansive sofa opposite to enjoy the surroundings, or open up the French doors – stretching towards the three-and-a-half metre ceilings – to a generous balcony overlooking the street below. For evening tipples, a second balcony looks out from the back of the home.

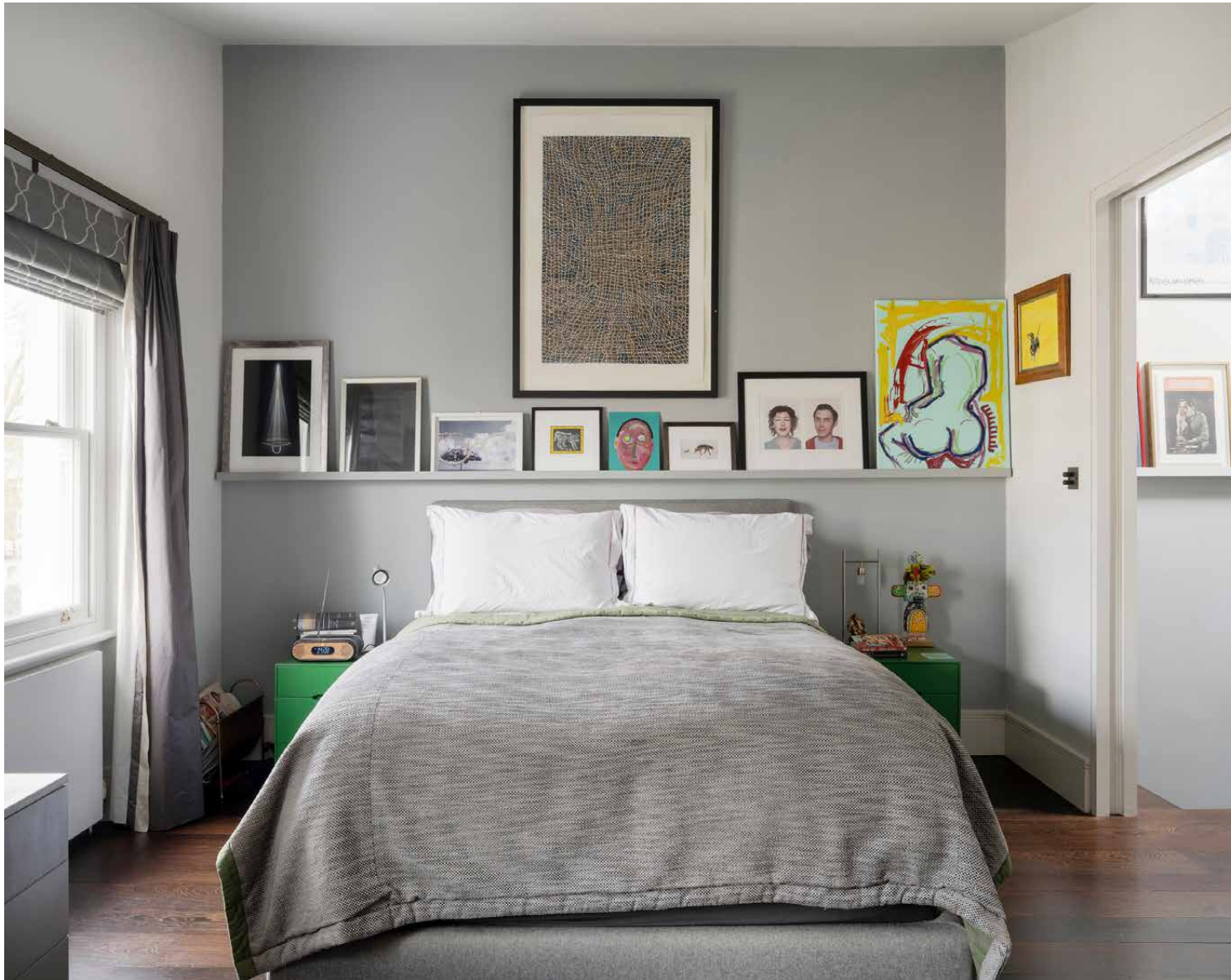
Upstairs, mid-century styling takes over in the open-plan kitchen and dining room. The social space revolves around a large table for eight – an ideal set up for entertaining. The kitchen enjoys a sunny disposition, with tiled sunflower art and a striking blue island-cum-breakfast bar that's the perfect spot for a morning coffee. A Rangemaster stove and oven adds a chef-like touch paired with a blue Zellige-tiled splashback alongside other state-of-the-art appliances.







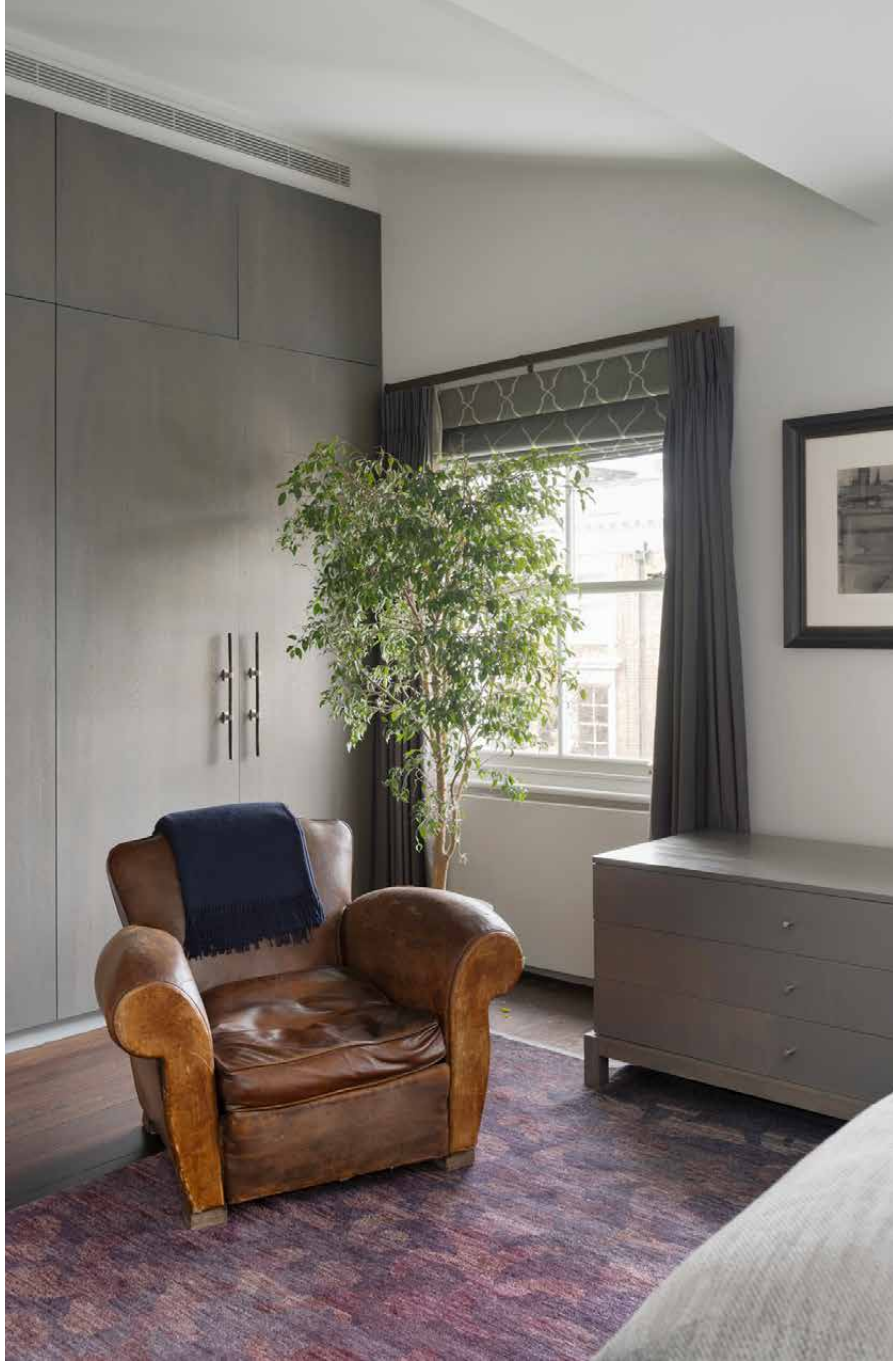


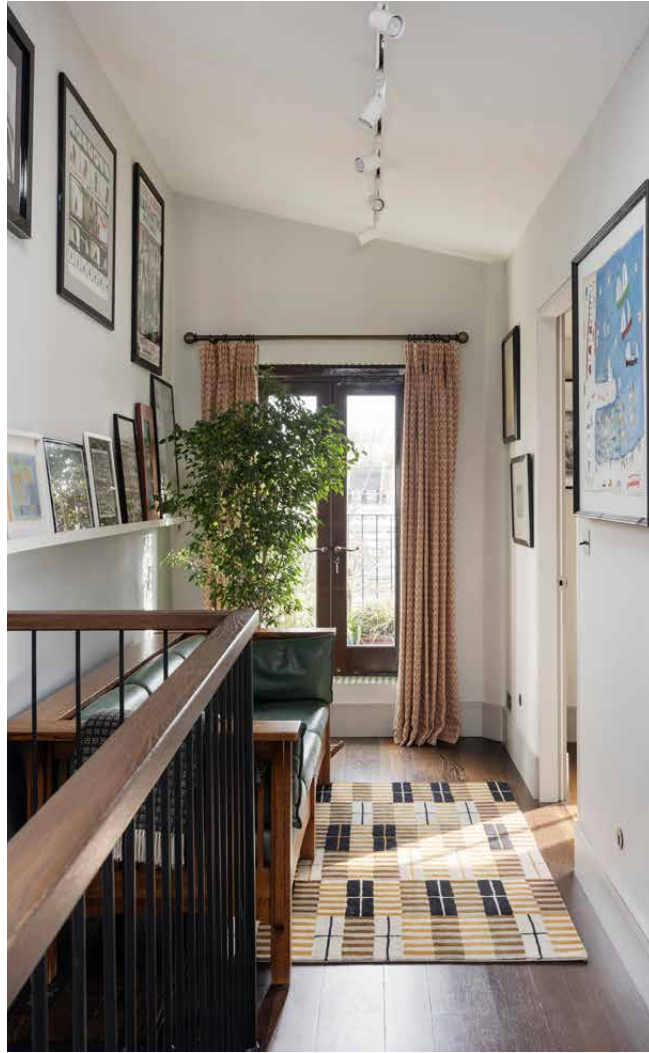


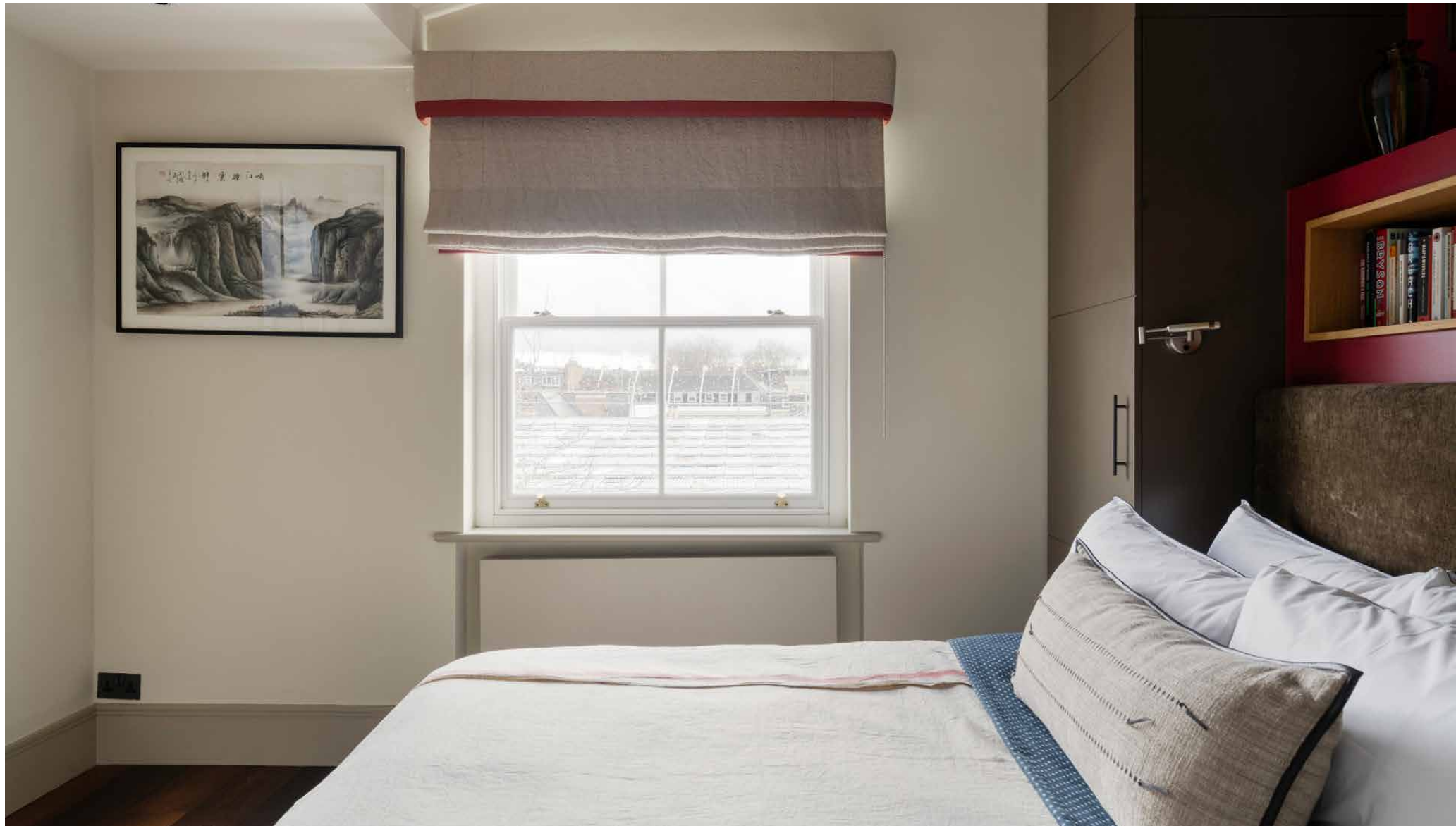
## Bedrooms & Bathrooms

Art-adorned walls continue upstairs, where sleeping quarters are served by en suites and enjoy the privacy of their own floor. A vaulted ceiling adds dimension to the principal suit, where a king-sized bed and built-in storage make for comfortable living. A skylight illuminates grey plaster-finish walls in the en suite, which benefits from underfloor-heating and a spacious shower. The guest bedroom suite enjoys a similar sense of homeliness, with warm-toned textures and an airy en suite shower room.









# Interior design

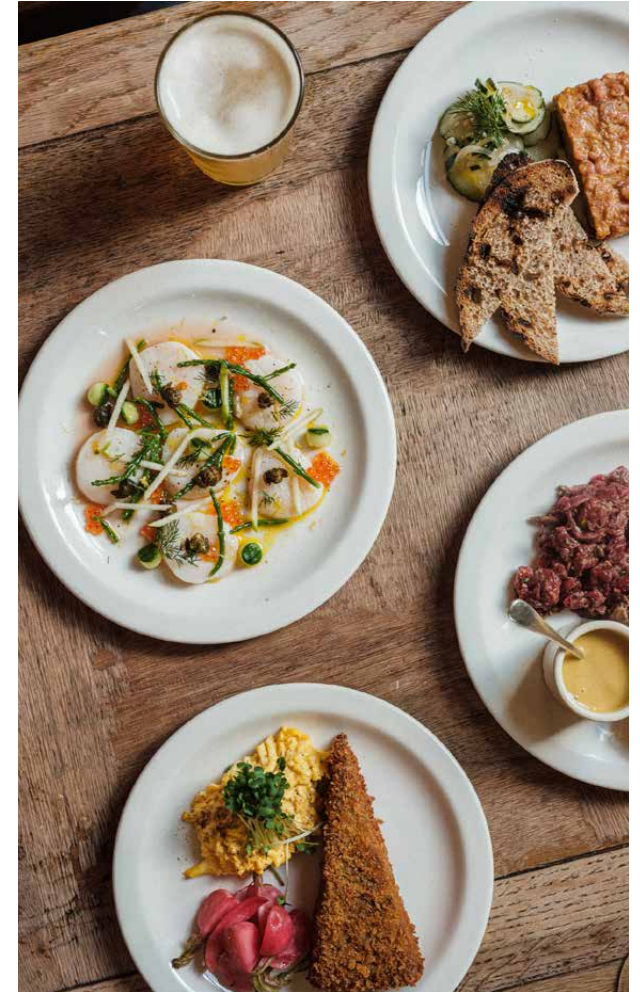
Interior designer Jette Anderson has ensured that art takes centre stage here. Personality and flair radiate through the furnishings, while paintings and prints by artists of all eras – Jack Nicholson and Cassandre to Dorothy Mead and Zanele Muholi – are dotted throughout. Details have been carefully curated – note custom-made stained-glass window in the living room, and the sustainably sourced ochre horn handles in the principal bedroom.

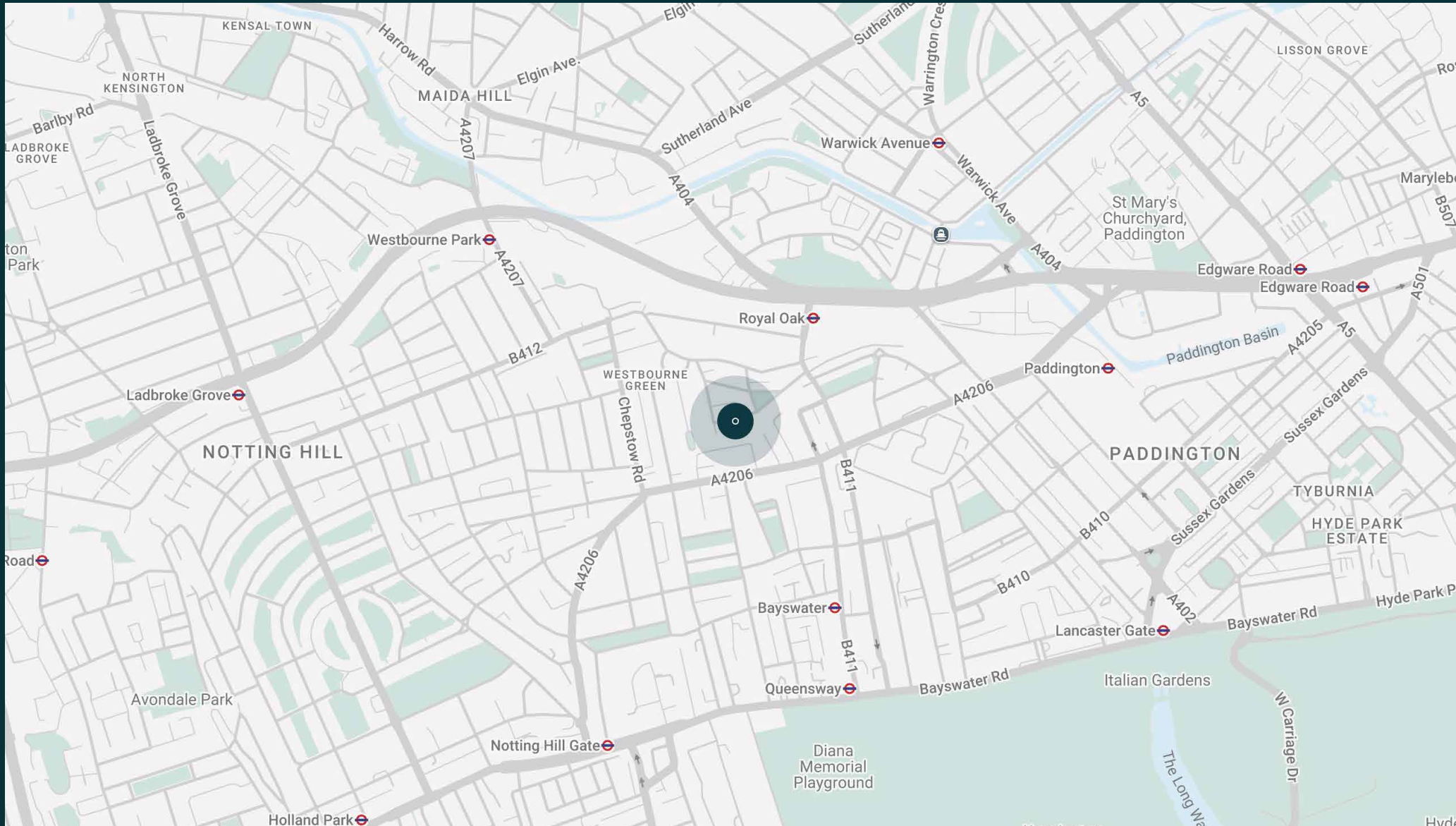


# The neighbourhood

Enjoy the privacy of historic residential surroundings and the proximity to characterful Notting Hill.

Sunderland Terrace could not be better located to enjoy the myriad eateries on Westbourne Grove: try Beam for middle eastern inspired brunch or Sunday in Brooklyn for innovative spins on American classics. Find your perfect perfume at Diptyque or indulge in a facial at Face Gym or Caudalie. Hyde Park is a 15-minute walk away for when you want your nature fix or hop on the Tube to venture beyond Notting Hill's pretty streets.



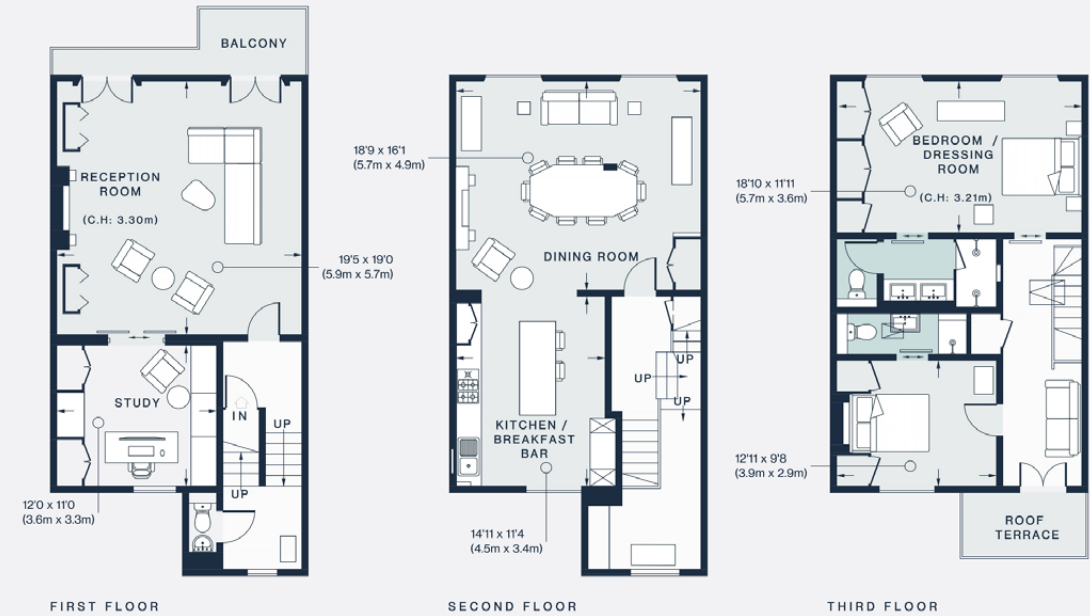




# Property features

- Interiors by Jette Anderson Interiors
- Open-plan kitchen and dining room
- Reception room
- Principal bedroom suite
- Guest bedroom suite
- Cloakroom
- Study
- Two balconies
- City of Westminster

Approx. 1,880 sq ft / 174.7 sq m



Approx. Gross Internal Area = 1,880 sq ft / 174.7 sq m

Floor plans are for illustrative purposes only and not to scale. Compliant with RICS code of measuring practice. Prepared for Domus Stay. Copyright © All Rights Reserved.

# Guest & concierge services

Our concierge team are here to help guests settle in, seamlessly. Centre court tickets to Wimbledon, Premier League seats with the best views, Savile Row tailors on standby, or a private chef to cater to individual tastes – we aim to elevate every stay.

From the moment of booking with us, each guest has a single point of contact to finesse the details. Our statement spaces are just the starting point – to ensure everyone feels at home, our rates include:

- Weekly housekeeping
- Flexible check-in/out
- Luxury linens and Bamford toiletries
- Legal compliance on all our homes
- A personal welcome and arrival essentials
- Unlimited access to guest services and tailored experiences
- Professional inventory inspection before and after every stay
- Access to a curated portfolio of sole agency properties



# domus stay.

Please get in touch if you have any questions  
or require any further information.

---

[hello@domusstay.com](mailto:hello@domusstay.com)

+44 (0)20 8168 8880

The property particulars are a guide not statements. Descriptions, photographs, and plans are for guidance only. The Property is offered "subject to contract and references". No warranties, representations, License or Tenancy is given by Domus Stay. Our full disclaimer together with trading names and our Privacy Policy is shown on our website

© Domus Stay 2025. All rights reserved.

