

domus  
stay.

---

## Stow Farm

THE COTSWOLDS & COUNTRY

10 Bedrooms, 10 Bathrooms  
For 20 guests

---





Spread across 20 acres of private land, 10-bedroom Stow Farm strikes a balance between the expansive and the intimate.

Cotswolds heritage and contemporary architecture unite across this award-winning farmhouse.

The scale of Stow Farm won't fail to impress. Scattered throughout the vast grounds, four separate dwellings – the Farmhouse, Cottage, Stone Barn and Dutch Barn – feature their own living quarters and private outdoor spaces. Retreat to your own corner or come together effortlessly – the options are endless. For the latter, dive straight between the heated pool (and superlative pool house) to meals in the Dutch Barn, a striking setting for up to 20 diners.





# The living spaces

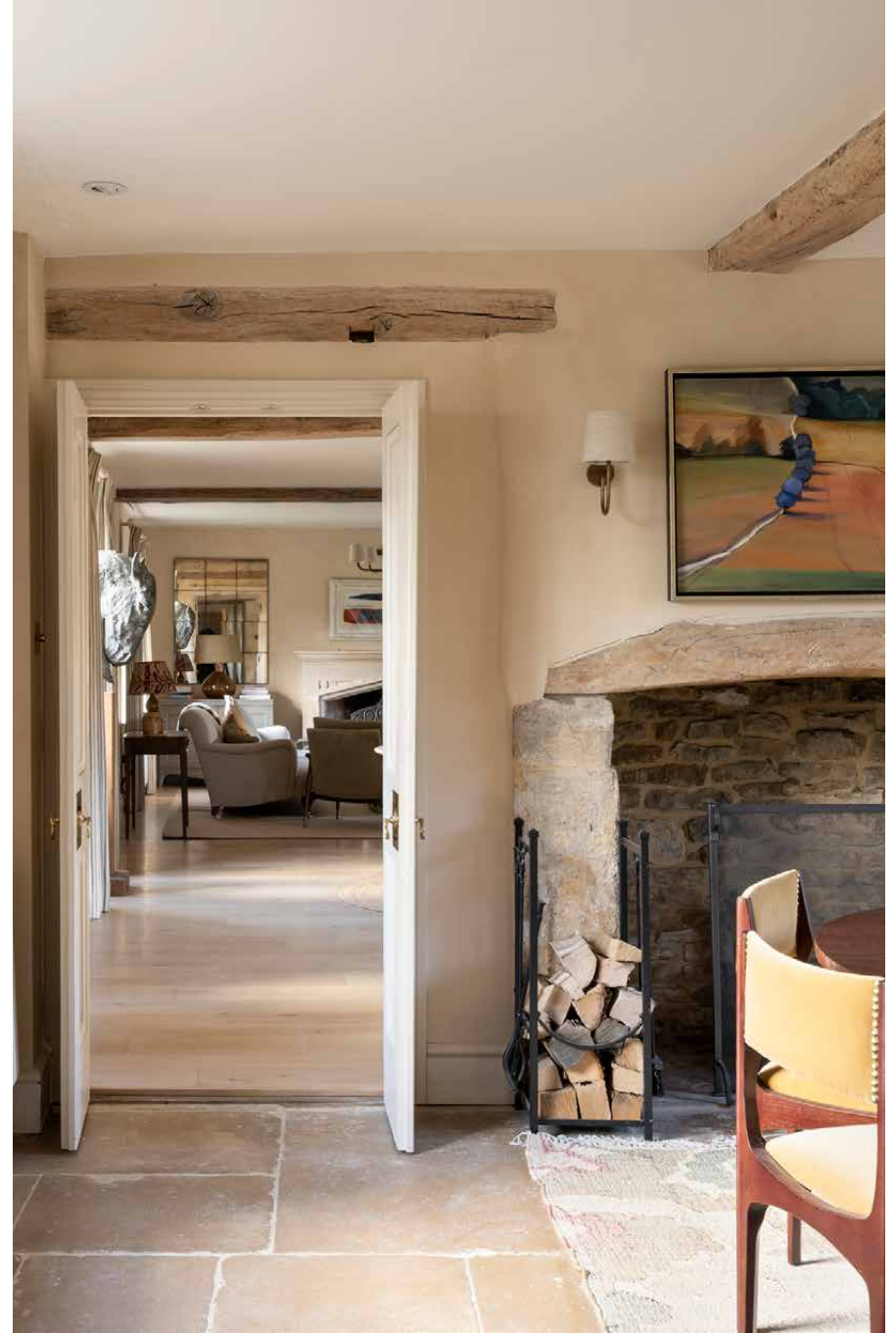
At the heart of Stow Farm, an 18th-century listed Farmhouse pairs rustic grandeur with everyday comfort. Exposed brick walls, curved timber ceilings and numerous log burners bring a kick-off-your-walking-boots-and-relax feel throughout. The footprint is characteristically generous, with multiple living spaces each more inviting than the next. Competing for the best seats in the house, the formal drawing room looks out over the cinematic setting, while the snug's L-shaped sofa is sink-into worthy.

Converted from a former outbuilding in 2023, the Stone Barn is the epitome of countryside chic. Vast Crittall windows frame views of the surrounding grounds, while a preserved hay rack and timber beams in the kitchen nod to the building's agricultural past (again, with lashings of stone, brickwork and an obligatory fire).













As its name suggests, the Cottage is a welcoming home-from-home. Originally a simple outbuilding, it was recently refurbished with a quietly refined palette. French windows open onto the garden, letting in natural light and birdsong during the spring and summertime, while a log burner provides a cosy focal point in the colder months.

# Kitchen & dining

Each of the four distinctive living quarters at Stow Farm has its own separate kitchen and dining facilities. Characterful and considered, the Farmhouse Kitchen is an uplifting culinary setting, complete with sky-blue cabinetry, a double butler sink and electric Aga oven.

For entertaining a crowd, the Dutch Barn obliges. Once used for storing hay, it's now the natural central gathering place of Stow Farm. The original steel frame and corrugated cladding echo its working past, now offset by expanses of Crittall glazing that draw in natural light and gaze across the orchard and fields. An open-plan layout is imagined for entertaining, with a fully-equipped kitchen, large dining table and ample seating gathered by a fireplace. From here, full-height doors lead onto a large terrace – with a barbecue and outdoor dining table.

















In the Stone Barn, another open-plan kitchen and dining area has style and substance – think bespoke cabinetry and a retro Smeg fridge. Meanwhile, for those staying in the Cottage, an open-plan kitchen and dining space is flooded with natural light through garden-facing windows. Dark-green cabinetry, terracotta floor tiles and a classic Aga combine to create a quintessential country feel.





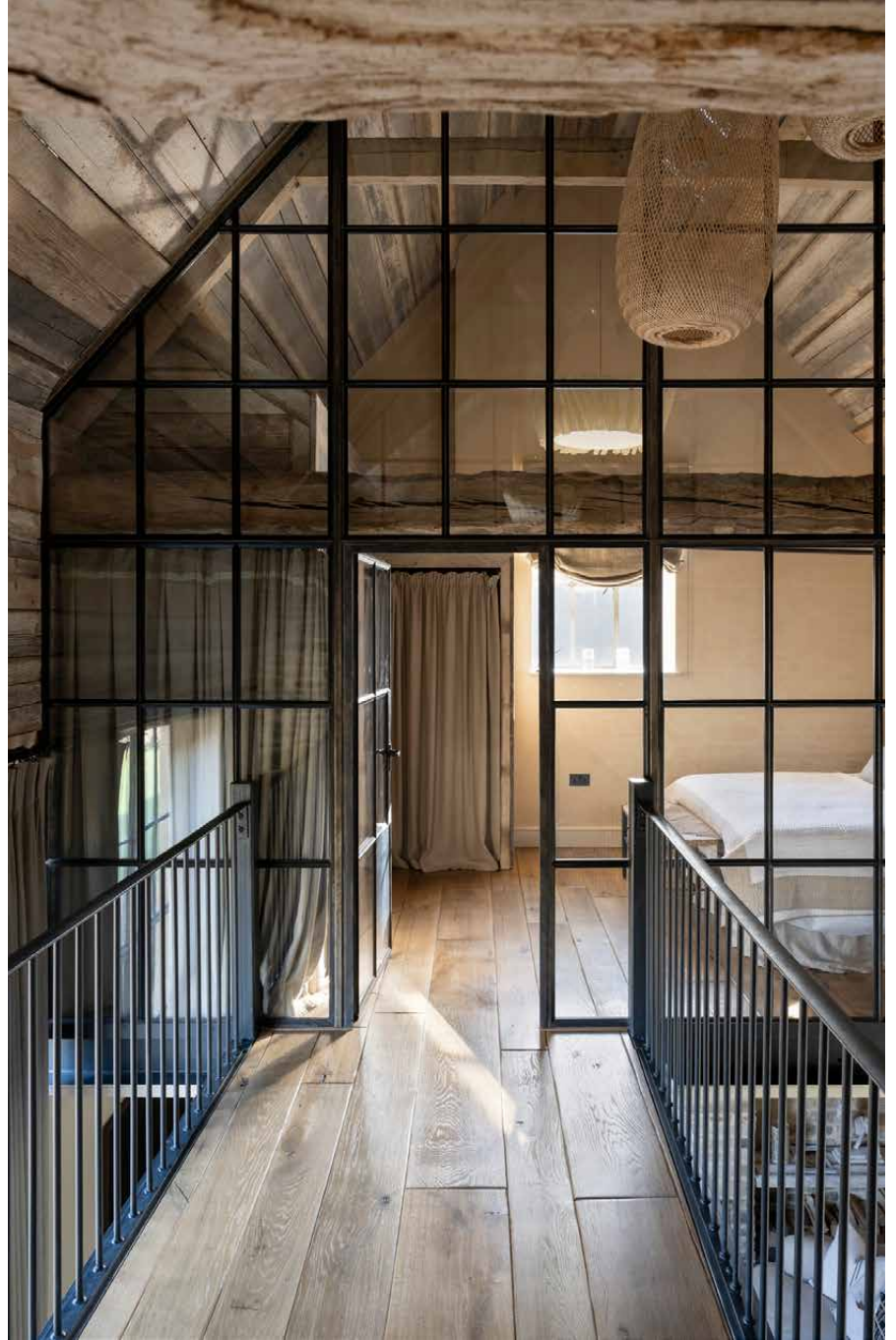


## Bedrooms & bathrooms

The Farmhouse contains four bedroom suites, each following a formula of calming tones, patterned upholstery, exposed wooden beams and serene views stretching across the countryside.

Two further bedroom suites are found in the Stone Barn. One is positioned on a mezzanine level, which looks down over the open-plan living area below. Towering Crittall windows extend toward the vaulted ceiling, drawing daylight deep inside and animating textural stones and timbers used throughout. The other enjoys an in-room freestanding tub, with exposed wood and brick walls bringing tactility to the setting.







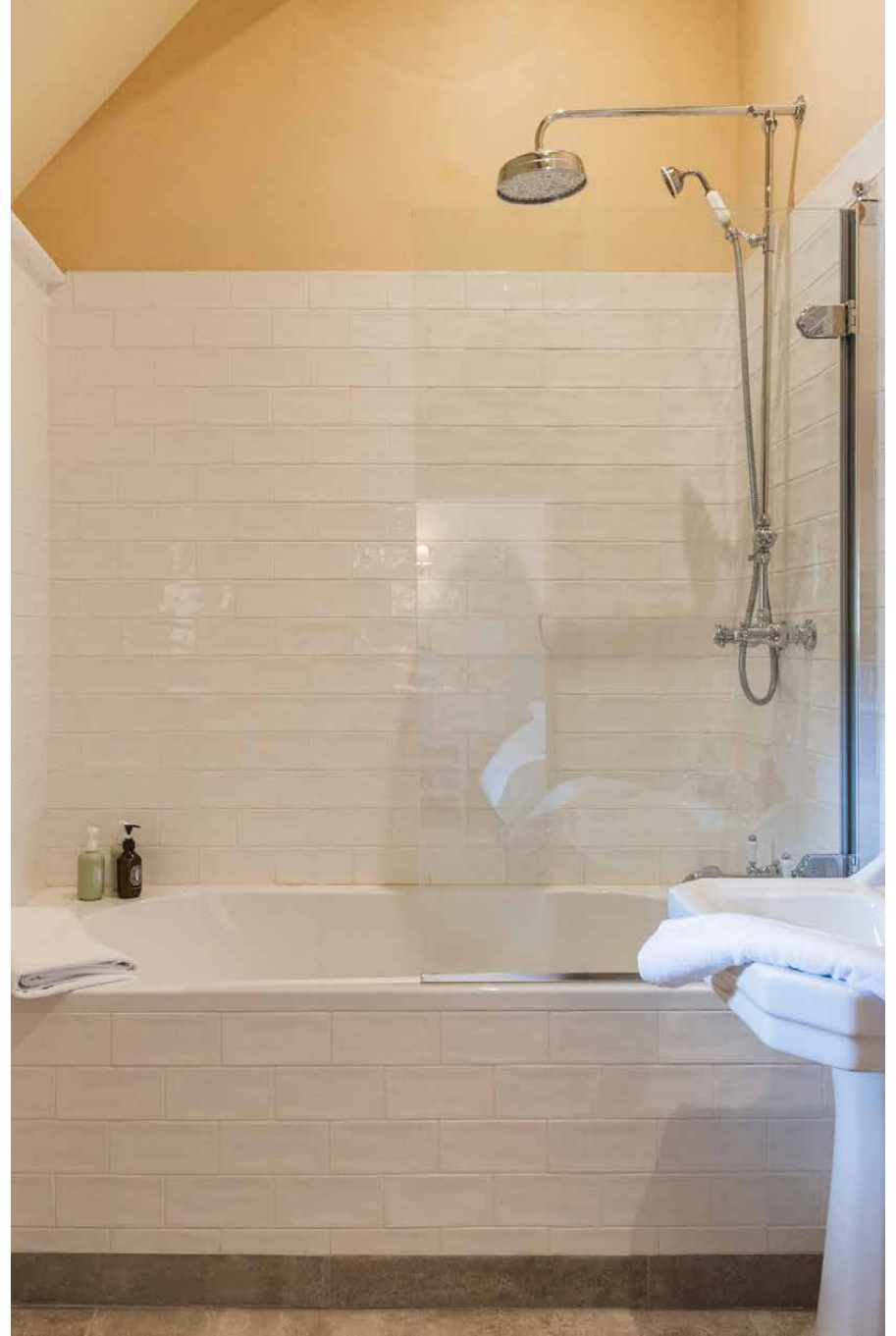
















The Cottage offers an additional four bedrooms: two benefit from en suite bathrooms, while a third is self-contained with its own kitchenette and bathroom, making it ideal for staff or longer stay guests who require extra independence.



# Outdoor space

Encircling the buildings, gently undulating lawns are dotted with trees and fruit orchards. At the farm's core, a 16-metre heated swimming pool beckons, surrounded by lush grasses and a stone patio furnished with lounge chairs. Nearby, a wood-clad sauna and cold plunge pool are tailor-made for wellness enthusiasts. An astroturf tennis court sits poised for a match, its expanse opening onto uninterrupted views of the rolling countryside. There are integrated football posts, if you prefer a kick-about.

Al fresco dining is thoughtfully woven throughout the grounds. A walled rose garden, framed by manicured topiary, offers a quiet setting in which to linger over a meal. Next to the Dutch Barn, a terrace with an outdoor kitchen and barbecue invites convivial gatherings, with a wooden veranda that offers sun-dappled lunches.

















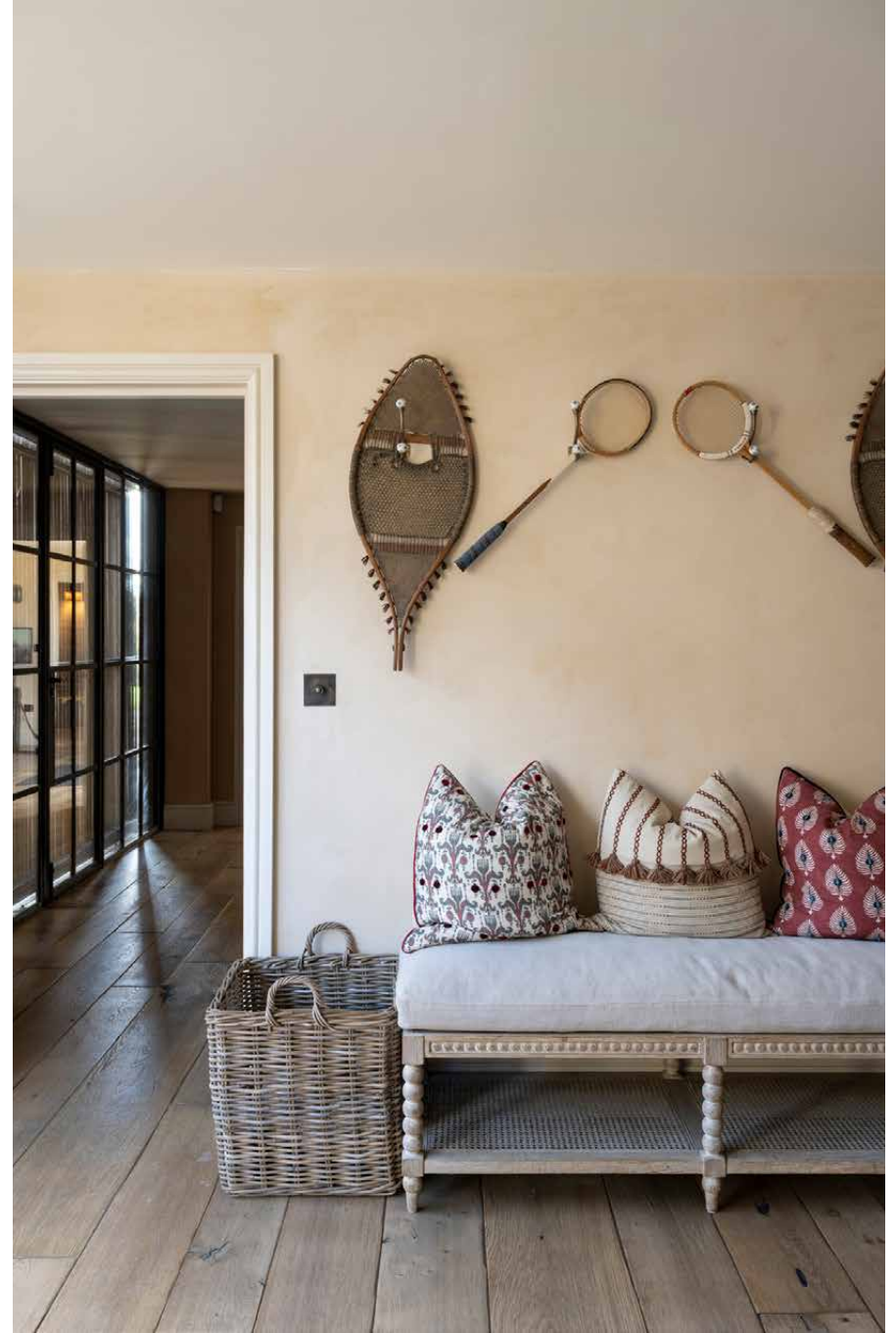






## Wellness & leisure

The Dutch Barn's ground floor is designed for rejuvenation and relaxation. A fully equipped gym provides space for morning workouts and afternoon yoga sessions, while the steam room and spa offer a calm counterpoint for recovery. As the day draws to a close, the cinema room – fitted with Dolby Atmos sound and plush seating – invites guests to unwind with a classic or the latest blockbuster.





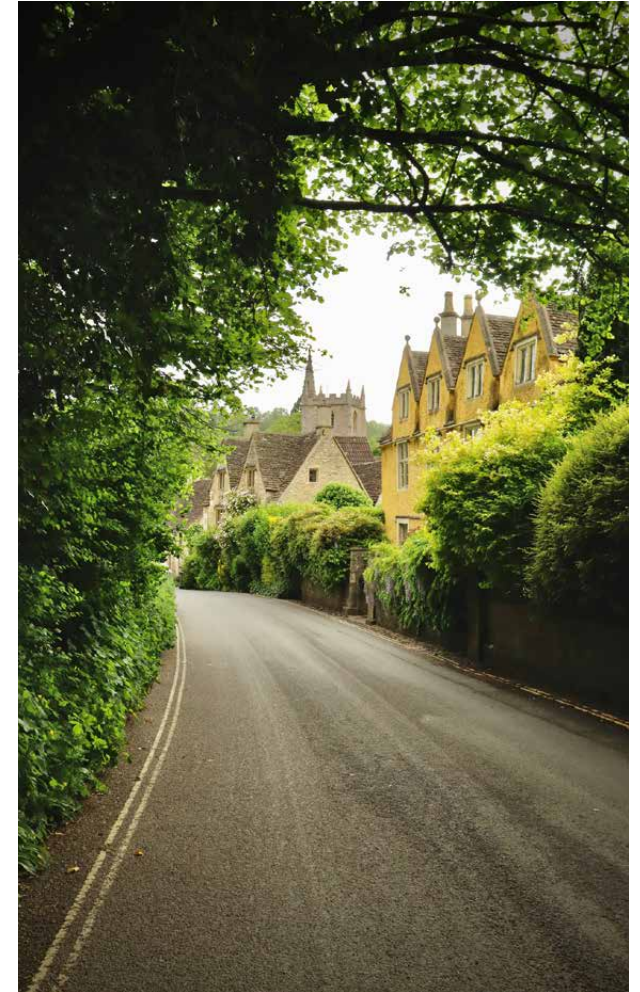
# The surroundings

Tucked into the rolling hills of the northern Cotswolds, the village of Upper Oddington is a springboard to its rural surroundings. It's a five-minute drive, or 30-minute walk, to the iconic Daylesford farm shop, replete with organic produce and artisanal homewares – plus an on-site restaurant and wellness spa. Closer to home in Lower Oddington, seasonal, wood-fired dishes and locally sourced wines can be found at The Fox.

Boutique shopping, art galleries and cosy tearooms await in nearby Kingham and Chipping Norton, while the Michelin-acclaimed Wild Rabbit showcases modern British cuisine in a stylish renovated inn. Often called the Venice of the Cotswolds, Bourton-on-the-Water charms beside the gently flowing River Windrush. There's plenty to see here, from exotic birds at Birdland Park & Gardens to classic cars at the Cotswold Motoring Museum and the whimsical Model Village. For further reflection, take a stroll around Burford's 900-year-old church – particularly enchanting at Christmas.

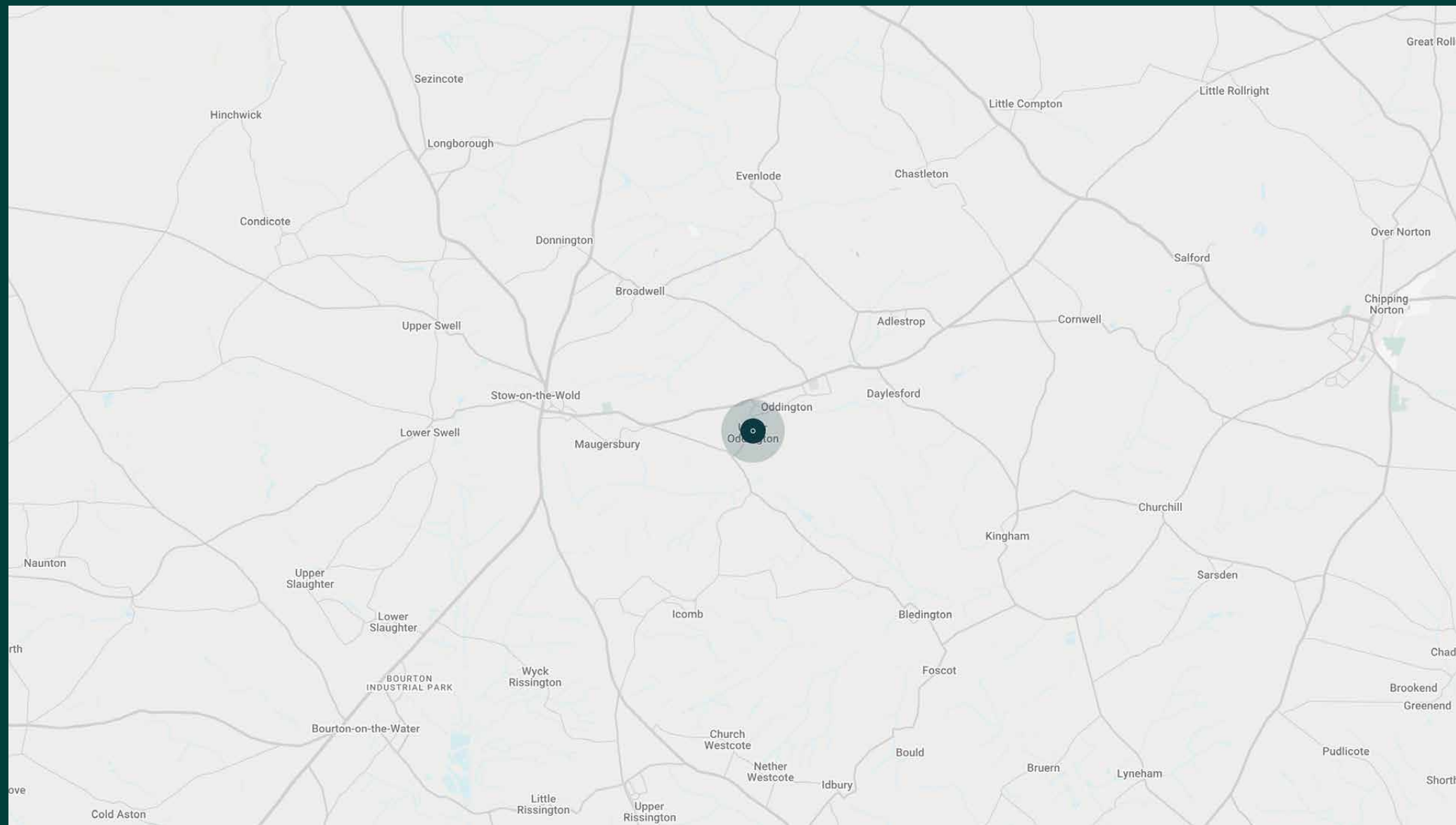
Travel times (by car):

- Daylesford – 5 mins
- Stow-on-the-Wold – 8 mins
- Chipping Norton – 15 mins
- Soho Farmhouse – 30 mins
- Oxford – 1 hour









# Property features

- Flexibility to stay across four buildings: the Farmhouse, Cottage & two barns
- Multiple living spaces
- 16-metre heated outdoor pool
- Astroturf tennis court with football goals
- Cinema room
- Gym with steam room
- Sauna and cold-plunge
- Fruit orchards
- Barbecue terrace

---

## What's included?

- Daily housekeeping
- Customisable amenities and activities available to add

Approx. 20 acres





# Guest & concierge services

Tennis coach or yoga instructor. Tables at renowned dining institutions, tickets to sporting or music events, and tours of the surrounding countryside: we're here to ensure stays are nothing short of exceptional. Working alongside our carefully selected partners, we put tastemakers and health and wellbeing experts at our guests' fingertips.

Our statement spaces are just the starting point – to ensure everyone feels at home, our rates include:

- 
- Housekeeping
  - Flexible check-in/out
  - Luxury linens and toiletries
  - Legal compliance on all our homes
  - A personal welcome and arrival essentials
  - Unlimited access to guest services and tailored experiences
  - Professional inspection before and after every stay
  - Complete discretion





Please get in touch if you have any questions  
or require any further information.

[hello@domusstay.com](mailto:hello@domusstay.com)

+44 (0)20 8168 8880

The property particulars are a guide not statements. Descriptions, photographs, and plans are for guidance only. The Property is offered "subject to contract and references". No warranties, representations, License or Tenancy is given by Domus Stay. Our full disclaimer together with trading names and our Privacy Policy is shown on our website

© Domus Stay 2025. All rights reserved.

