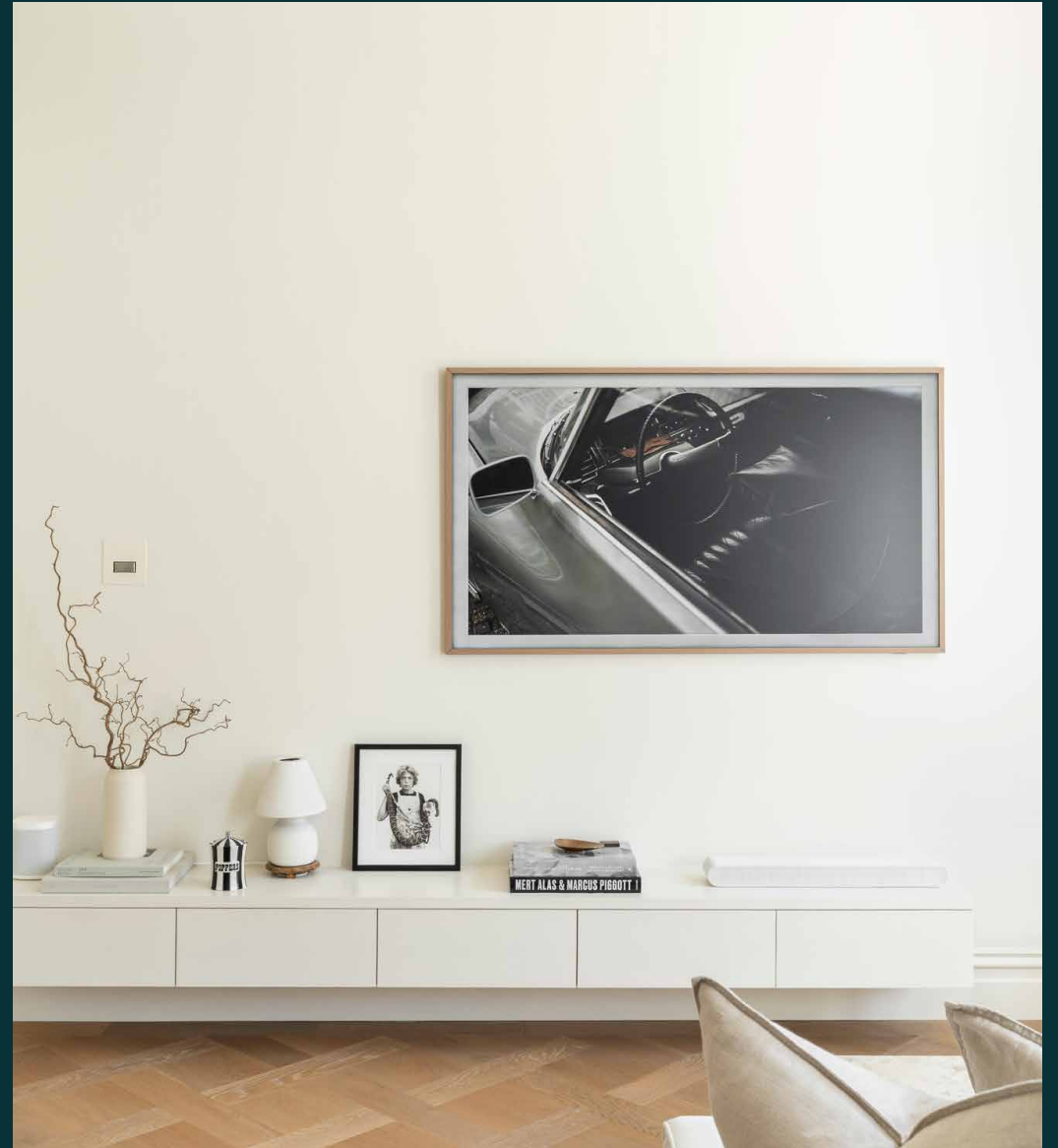


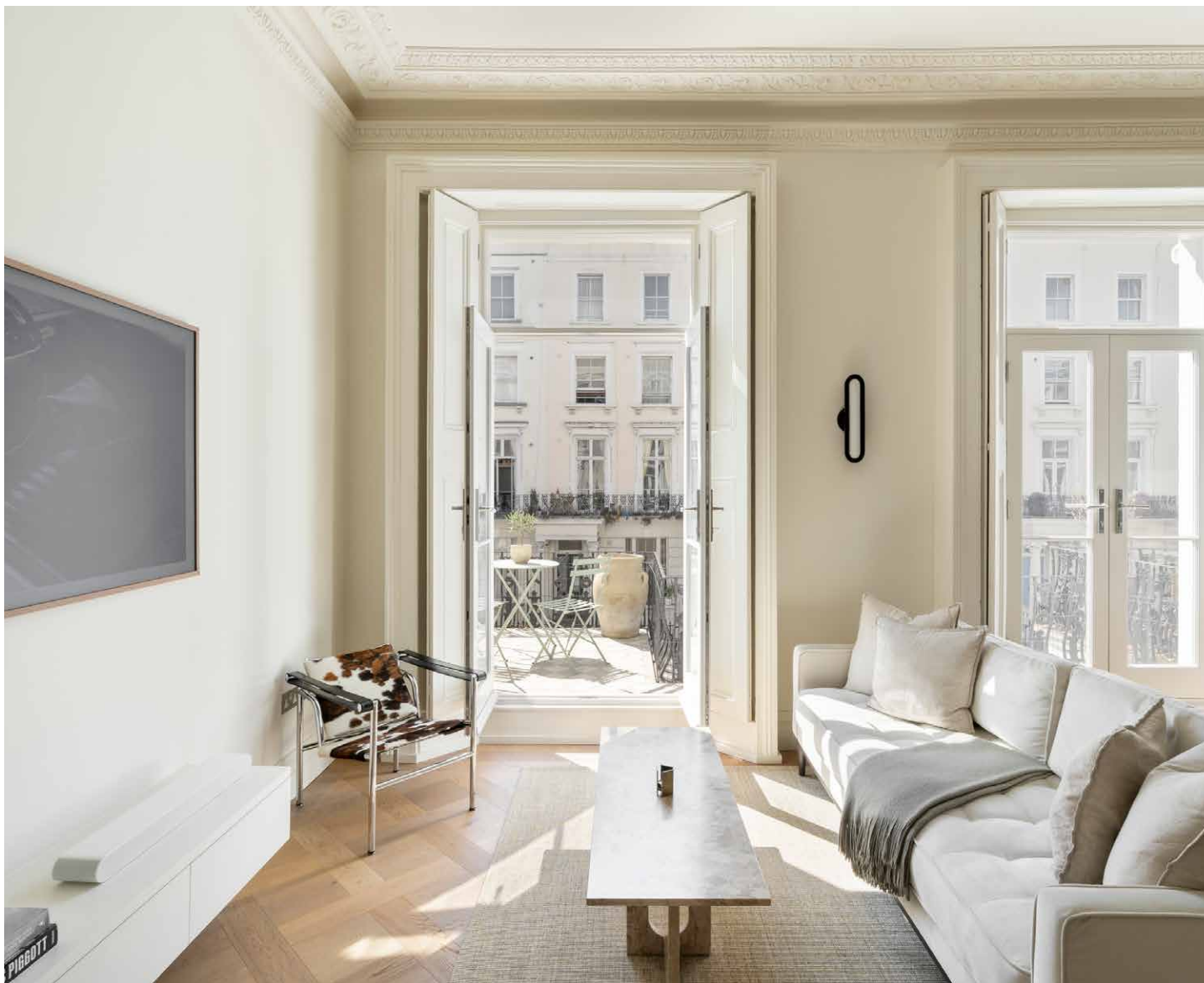
domus
stay.

St Stephen's Gardens V

NOTTING HILL W11

1 Bedroom, 1 Bathroom
For 2 guests





A one-bedroom Notting Hill apartment for rent that elegantly blends period charm with contemporary light-filled living.

Nestled between Notting Hill and Bayswater, this first-floor apartment sits on a picturesque street lined with portico porches and stucco façades. Inside, a refined neutral palette and preserved period detailing create a calm, sophisticated backdrop for everyday.



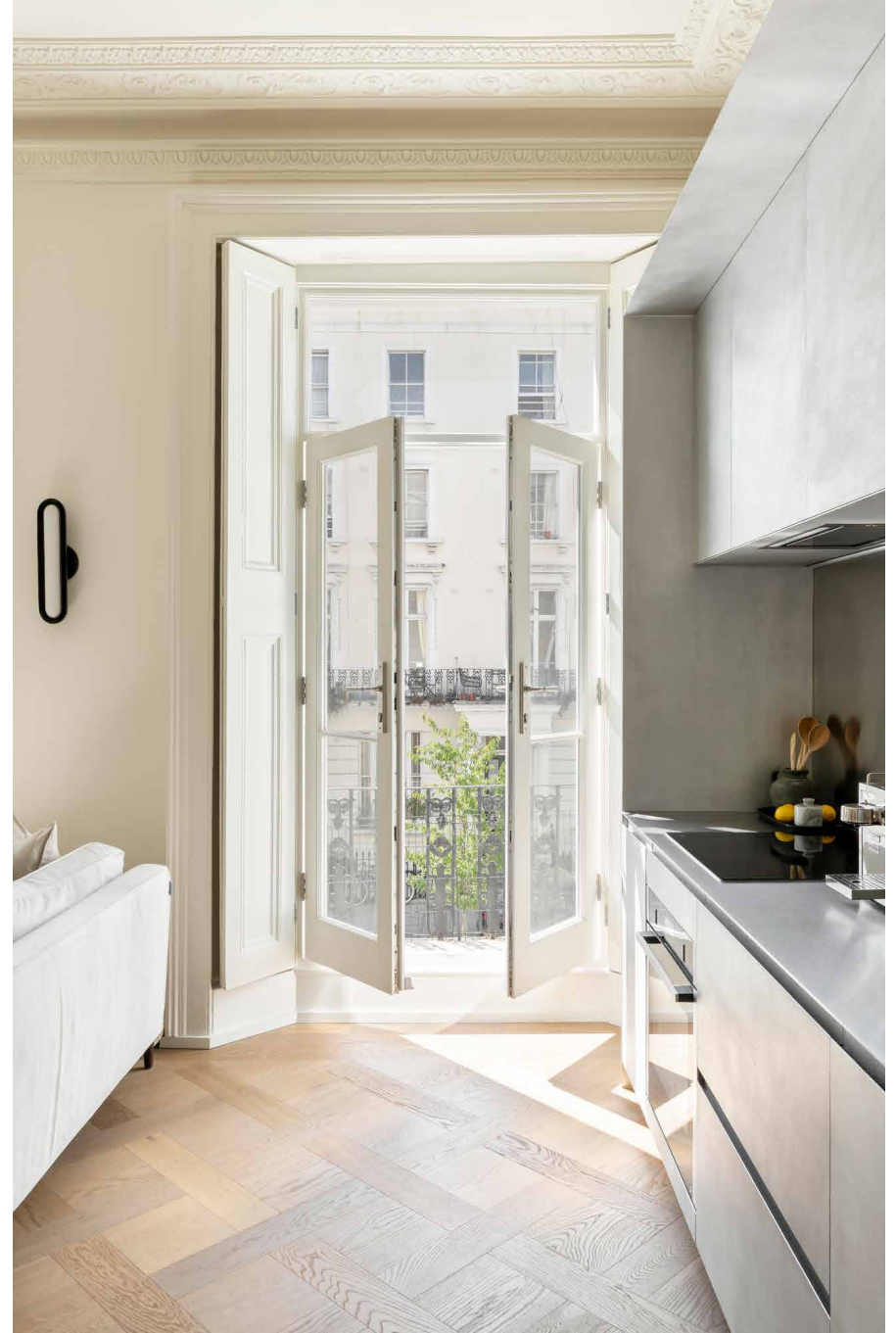


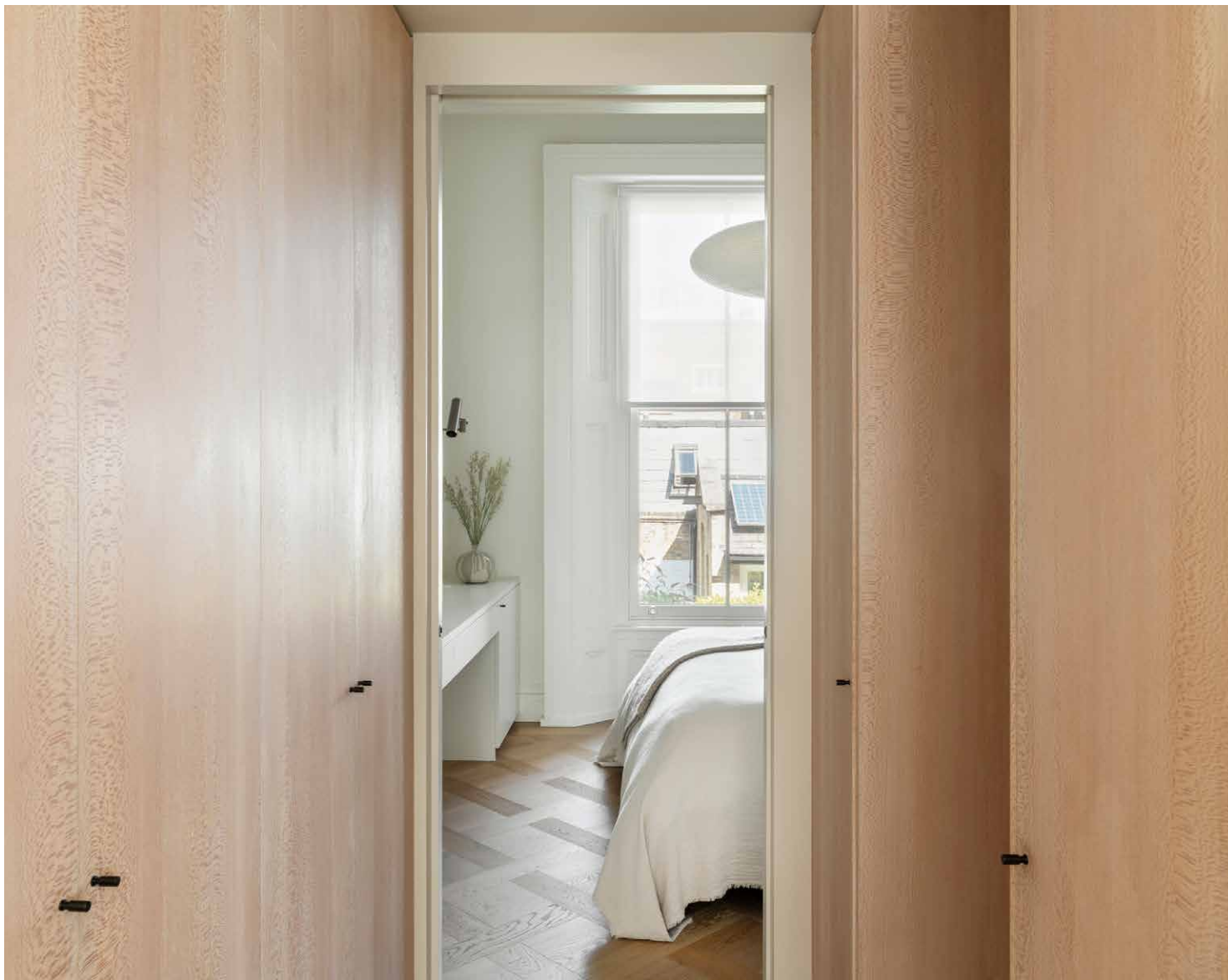
The living spaces

Natural light pours into the open-plan living space through two sets of French doors, illuminating organic tones and immaculate design. The kitchen – designed by Reform Copenhagen – pairs hand-brushed aluminium cabinetry with stainless steel surfaces, a Quooker tap and integrated Neff appliances, offering both functionality and visual edge. Orluna spotlights and Apparatus sconces add subtle warmth and atmosphere throughout.

Versailles parquet flooring and intricate cornicing root the apartment in its heritage, while industrial-style materials introduce a modern contrast. In the dining area, a custom Edward Collinson table and built-in bench seating sit under a sculptural flying saucer pendant light – a convivial setting for hosting or unwinding. The living area invites relaxation with an expansive cream sofa and a Samsung Frame TV, blending comfort with curated design.







Bedrooms & bathrooms

A sense of calm washes over the bedroom. Apparatus lighting illuminates the room, alongside a large sash window. A bank of custom-built wardrobes provides ample storage. The bathroom continues the theme of quiet luxury with its micro-concrete finish, rainfall shower and bespoke Calacatta Viola marble vanity. A narrow, frosted window draws in light from the bedroom, maintaining privacy while enhancing brightness.



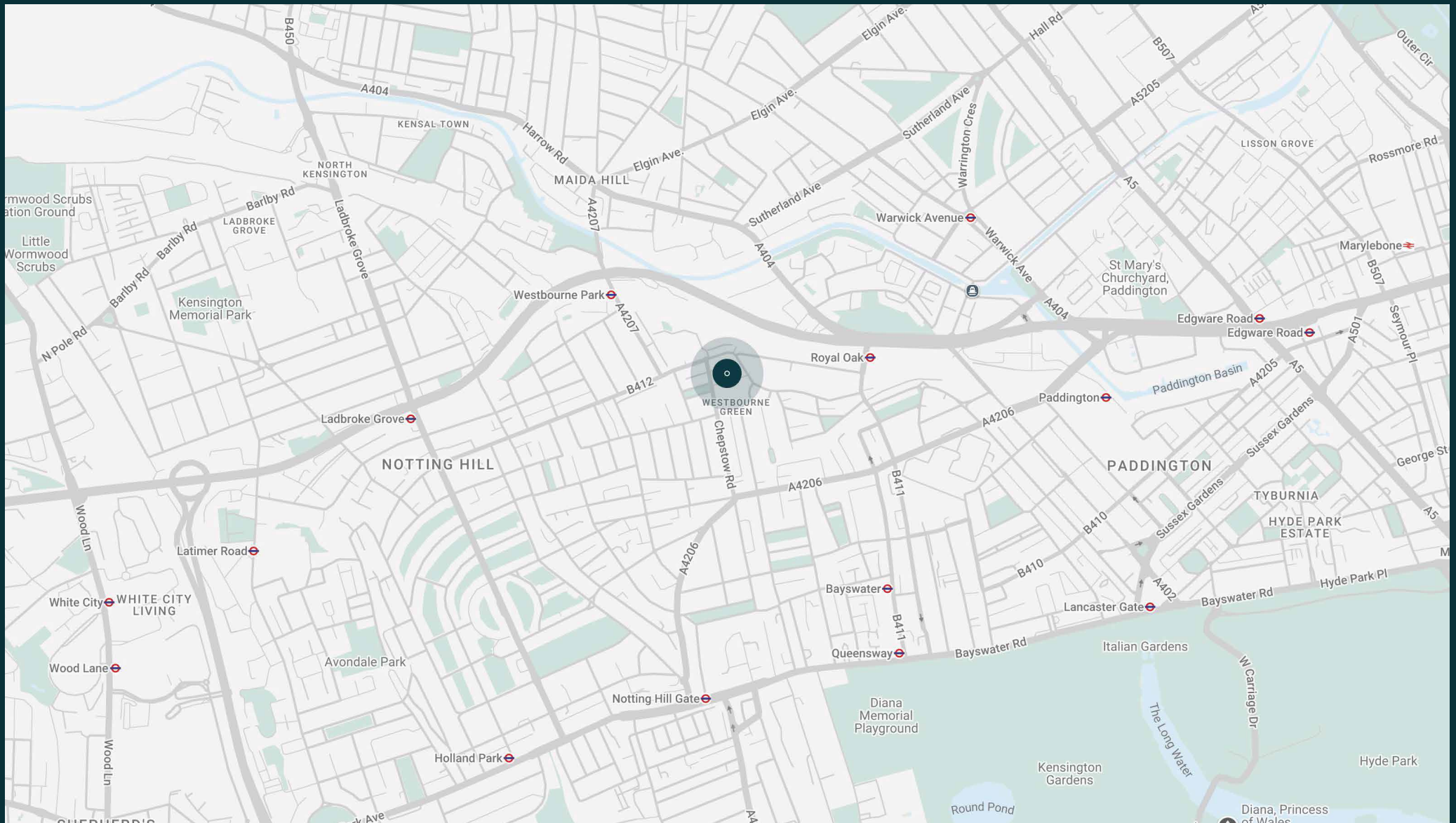


The neighbourhood

St. Stephens Gardens has a best-of-both-worlds appeal, enjoying the quiet of its residential location, but with fantastic proximity to the rest of Notting Hill.

Just a five-minute walk away, Westbourne Grove is lined with celebrated eateries. Caffeinate at Beam, then work up a sweat with a session at Psyche, before brunch at Granger & Co., or shopping for fresh groceries at Daylesford Organic. For a weekend stroll, wander down to Kensington Gardens and the sprawling lawns of Hyde Park. End the evening with dinner at Gold or Dorian, then head to one of the neighbourhood's most coveted pubs, The Cow, for a nightcap.

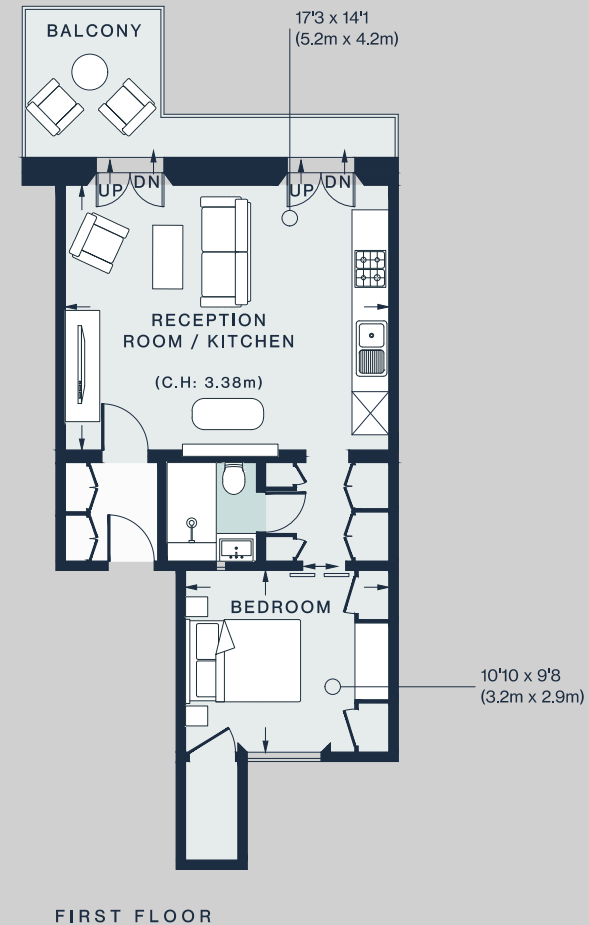




Property features

- Double reception room
- Contemporary kitchen
- Principal bedroom suite with dressing room
- Three further bedroom suites
- Guest bedroom
- Patio garden
- Roof terrace and additional living room
- Cloakroom
- Garage
- Study
- Snug

Approx. 42.2 sq m / 476 sq ft



Approx. Gross Internal Area = 476 sq ft / 44.2 sq m

Floor plans are for illustrative purposes only and not to scale. Compliant with RICS code of measuring practice.
Prepared for Domus Stay. Copyright © All Rights Reserved.

Guest & concierge services

Our concierge team are here to help guests settle in, seamlessly. Centre court tickets to Wimbledon, Premier League seats with the best views, Savile Row tailors on standby, or a private chef to cater to individual tastes – we aim to elevate every stay.

From the moment of booking with us, each guest has a single point of contact to finesse the details. Our statement spaces are just the starting point – to ensure everyone feels at home, our rates include:

-
- Weekly housekeeping
 - Flexible check-in/out
 - Luxury linens and Bamford toiletries
 - Legal compliance on all our homes
 - A personal welcome and arrival essentials
 - Unlimited access to guest services and tailored experiences
 - Professional inventory inspection before and after every stay
 - Access to a curated portfolio of sole agency properties



domus stay.

Please get in touch if you have any questions
or require any further information.

hello@domusstay.com

+44 (0)20 8168 8880

The property particulars are a guide not statements. Descriptions, photographs, and plans are for guidance only. The Property is offered "subject to contract and references". No warranties, representations, License or Tenancy is given by Domus Stay. Our full disclaimer together with trading names and our Privacy Policy is shown on our website

© Domus Stay 2025. All rights reserved.

