

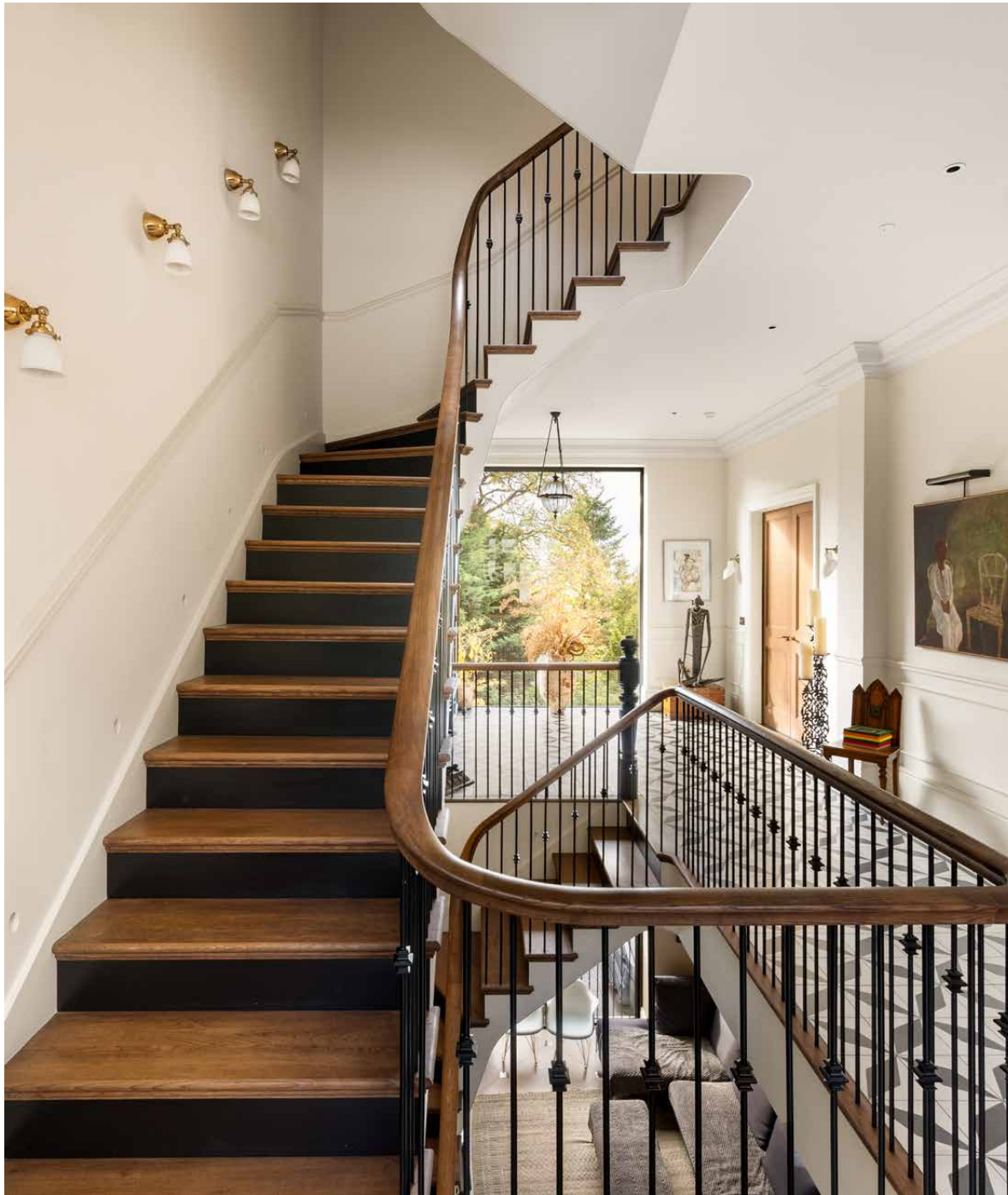


Redington Road

Hampstead NW3

7 Bedrooms, 8 Bathrooms
For 14 guests





A grand Hampstead house to rent, shaped by global perspectives and timeless design.

Elegant, expressive and attuned to its surroundings, Redington Road is a home that honours its history. Tucked into one of London's most characterful enclaves, behind its stately façade lies five floors of living spaces that feel both rooted and far-reaching. Think generous proportions, flowing sightlines and rooms that equally invite solitude and social gatherings.

Step beyond the crittall-framed entrance and the sense of scale is immediate. Traditional tiled floors meet a bespoke oak staircase that connects all four levels, drawing the eye upwards to a top-floor skylight. Arranged across the ground level, two reception rooms are styled for all occasions. A more formal setting to the rear reinterprets tradition, with glass doors to a Juliet balcony framing garden views. It's a room made for hosting – formed with artwork, curved sofas and a fireplace that anchors the space. Sitting just outside, a custom-designed bar by Sara Fenn is primed for cocktails on evenings in. Utilise the front sitting room for more informal affairs: a sage green retreat that doubles as a home workspace. Elsewhere, a compact gym is kitted out with the basics.





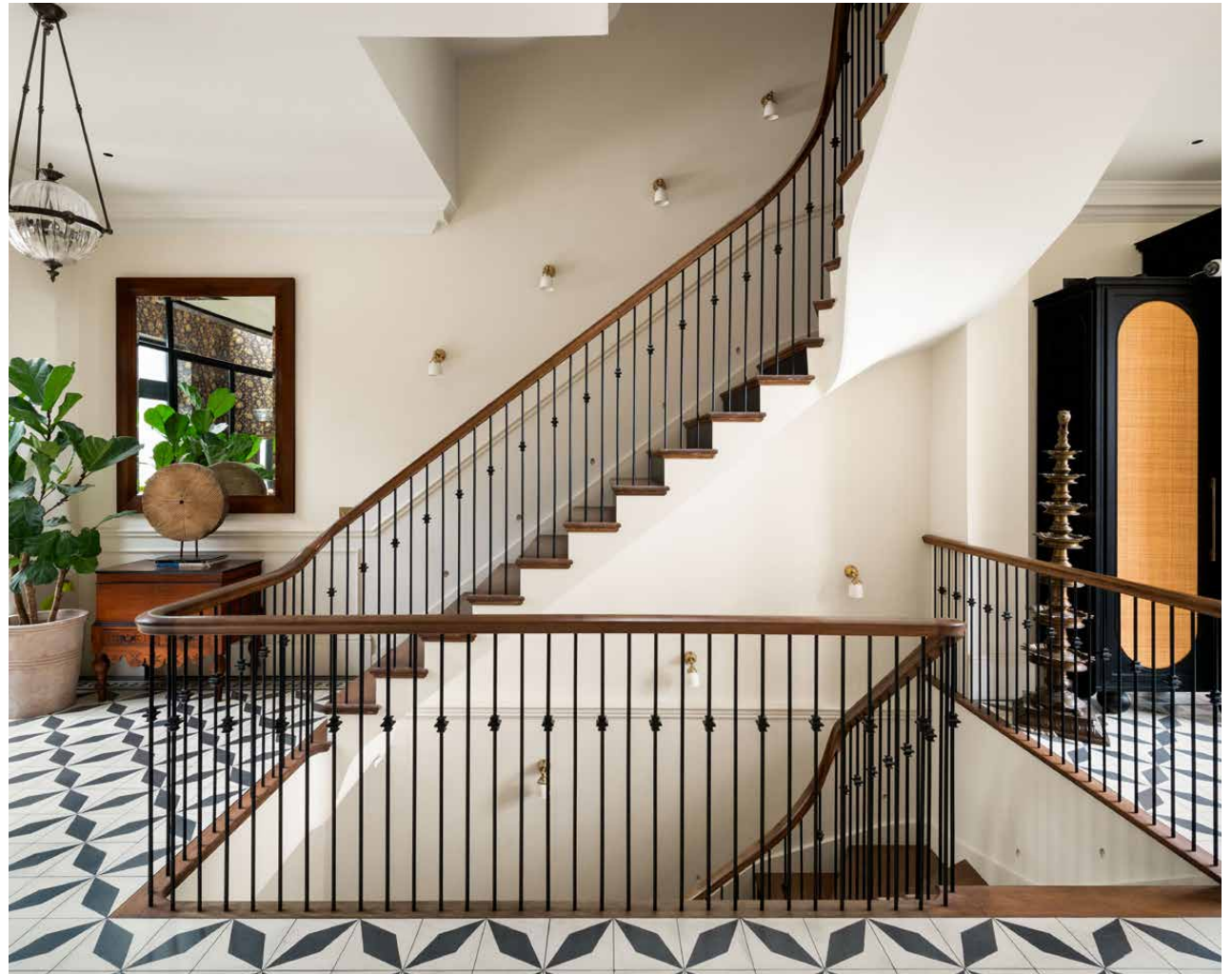


Just outside, a custom-designed bar by Sara Fenn lends itself to evenings in



“

Every detail has been designed to let the architecture shine - generous proportions, flowing sightlines, and rooms that invite both solitude and social gatherings.







On the lower ground floor, the heart of the home unfolds: a sweeping open-plan kitchen, dining and lounge space that speaks to purpose and personality. Soft green cabinetry, stone worktops and top-tier Gaggenau appliances form the culinary core, where a colossal island brings family and guests together.

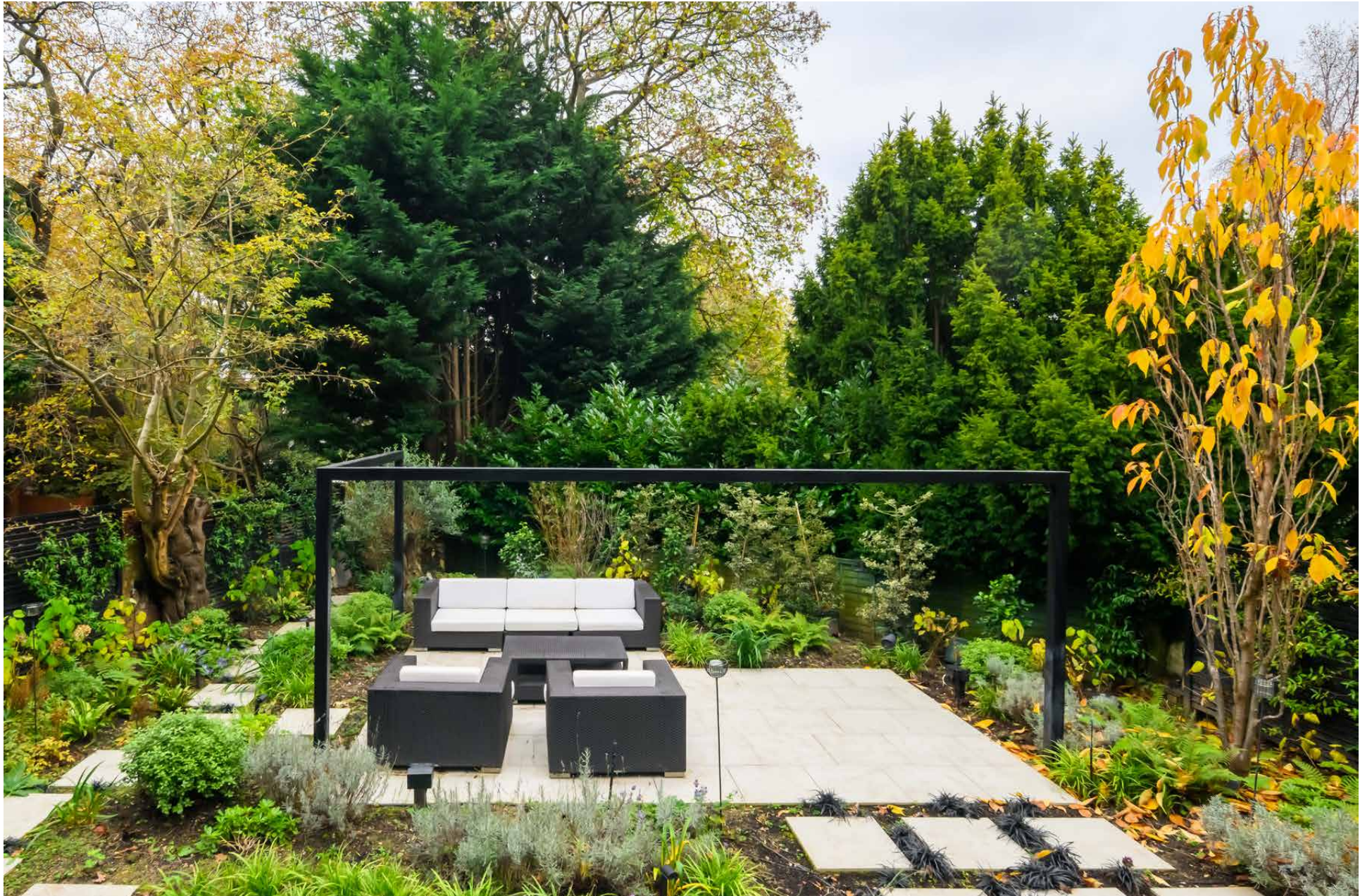
The dining area is backdropped by a bespoke magnolia-inspired chandelier – an echo of the trees just outdoors – and details are layered throughout: an antique mirror fitted into a tea barrel lid, a nod to the owner's Indian heritage; and two 19th century brass architectural lamps.

From the lower ground floor, doors open onto a landscaped garden that doubles as a peaceful alfresco living space. There's a decked terrace for summertime dining and a central patio below, enveloped by blossoming trees, flora and foliage.









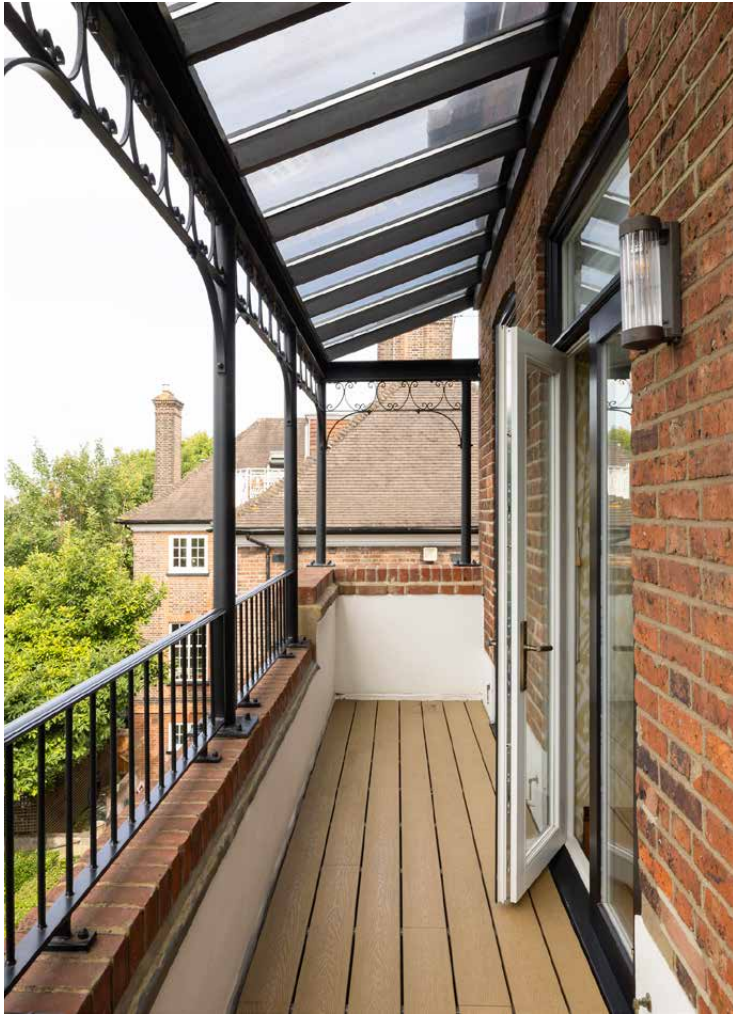


The principal suite continues the home's considered tone – soothing neutrals, wooden floors and rattan wardrobes inspired by Indian craftsmanship. French doors open onto a terrace overlooking the garden, while the en suite bathroom is a monochrome sanctuary with checkerboard tiles, a freestanding tub and rainfall shower. Through bi-folding doors, a spacious dressing room is dedicated to bespoke storage. Six further bedrooms are thoughtfully arranged – generous in scale, quiet in mood.

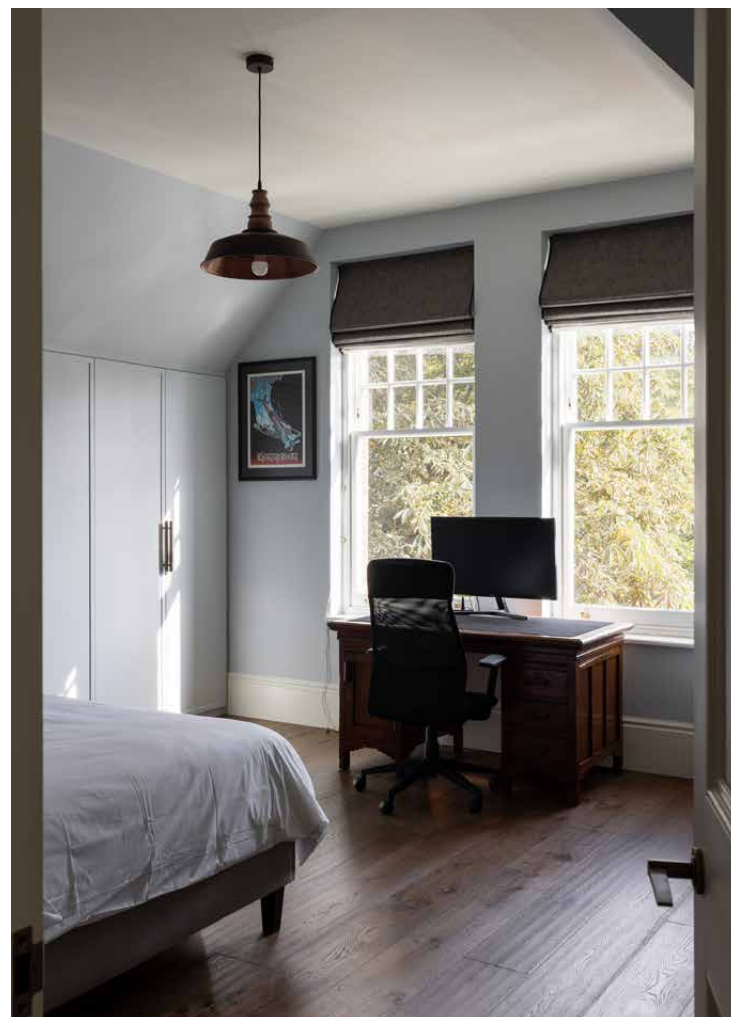


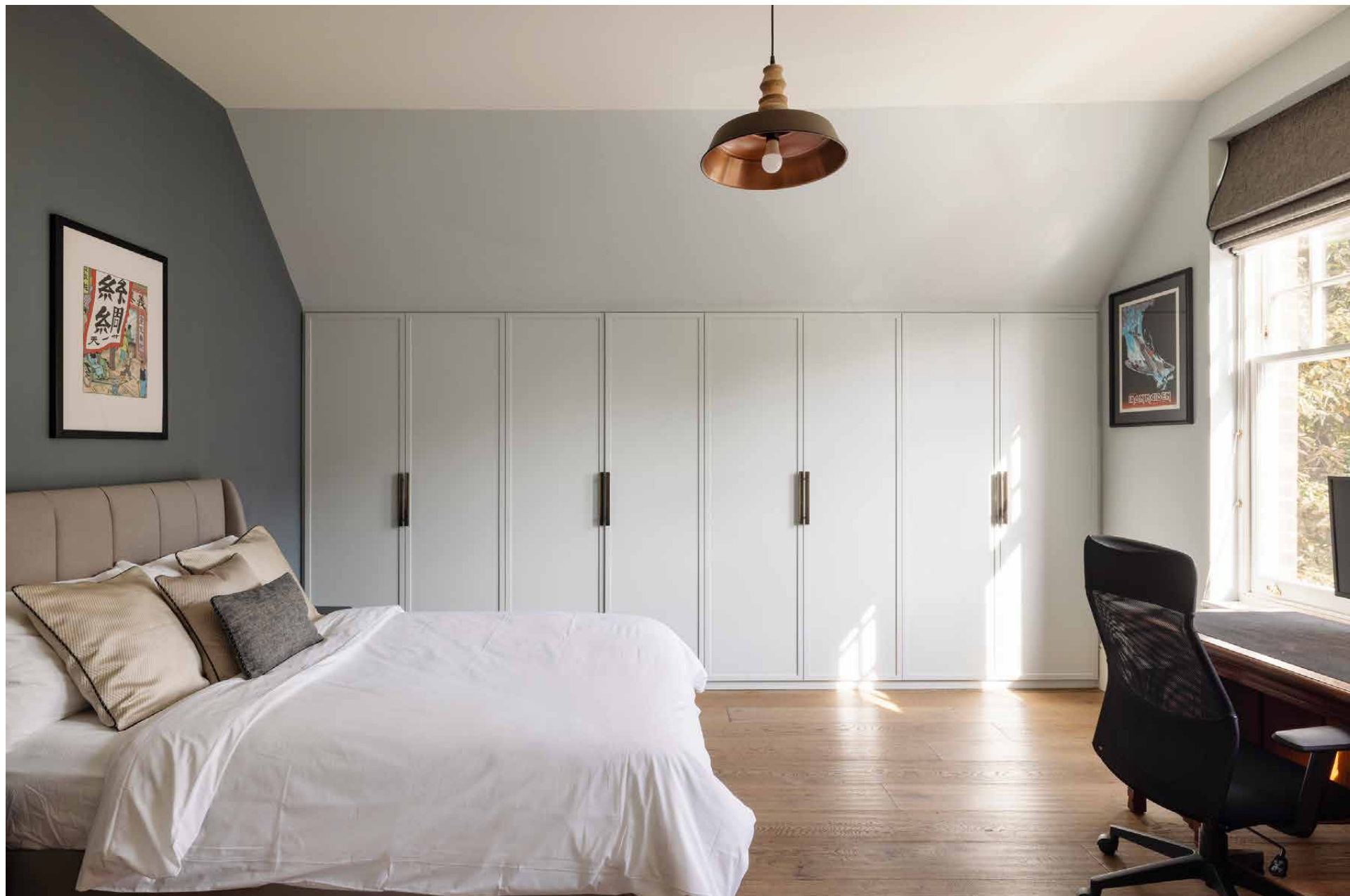
















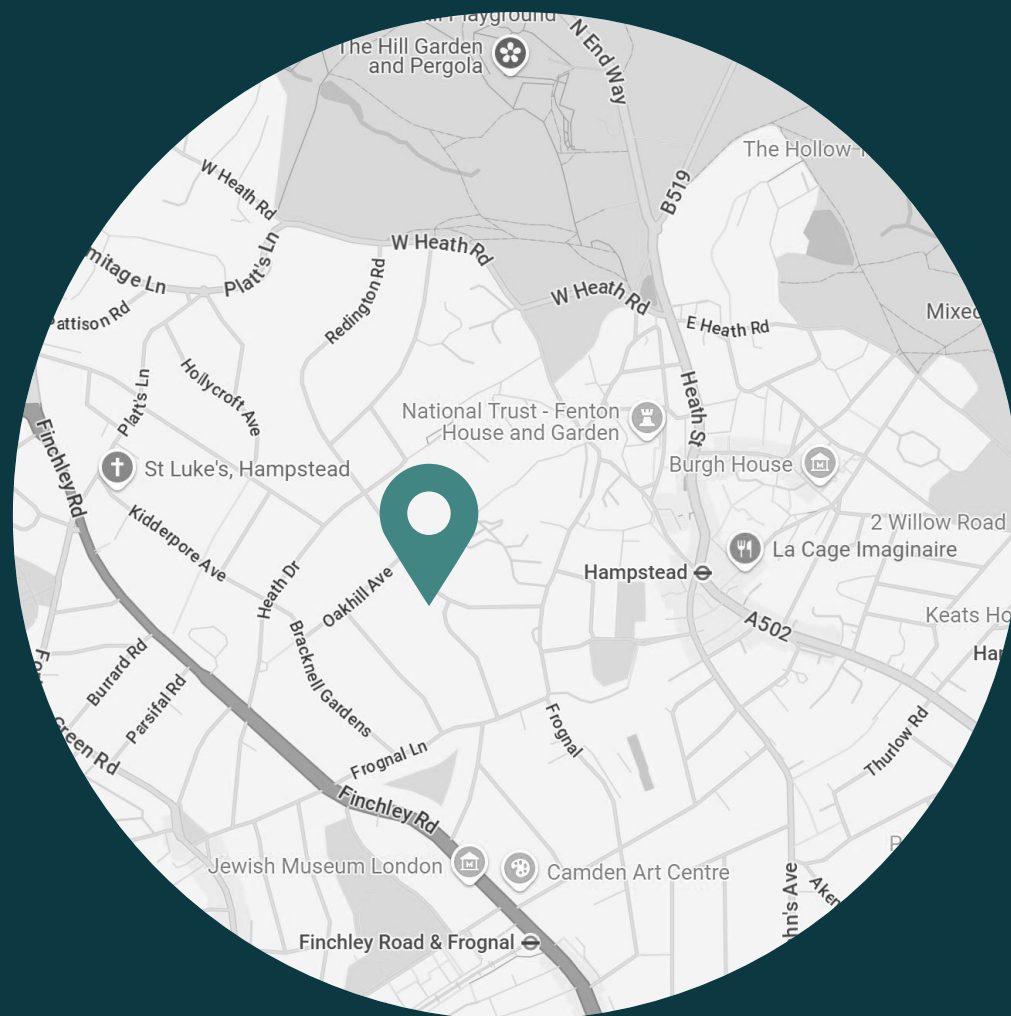




LOCATION

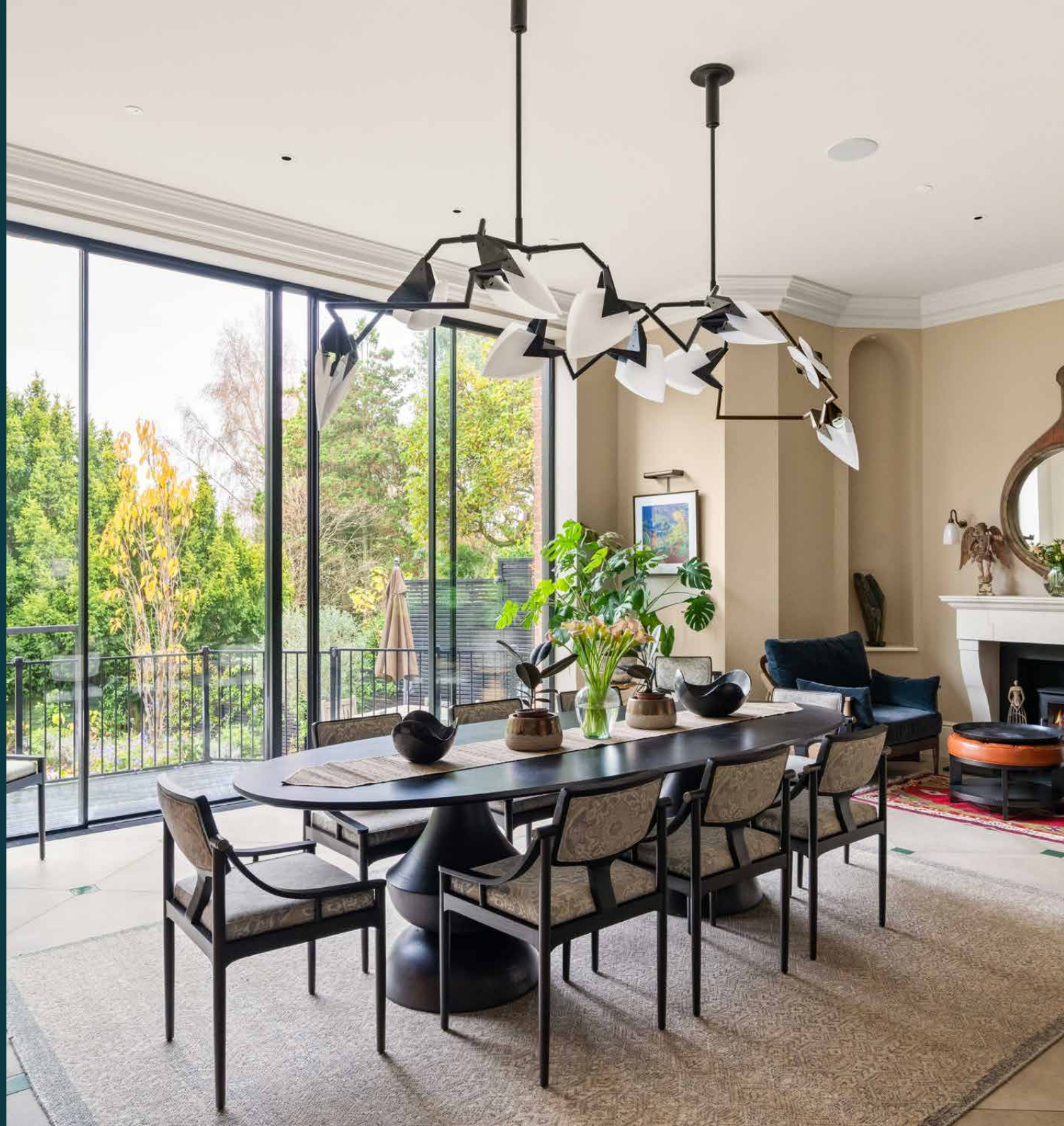
Hampstead is all about its Heath. Some 800 acres of wild green space, it's a place to press pause close to the heart of the city.

Ramble up to Parliament Hill viewpoint for an unbeatable vantage point over London or brave a dip in one of the heath's outdoor bathing ponds. Reward your efforts with baked goods from Ginger & White followed by a wander through the cobbled streets of Hampstead Village and a drink at the Holly Bush. The neighbourhood certainly isn't short of excellent pubs – right on the doorstep you'll also find The Duke of Hamilton, home to the Hampstead Jazz Club. Historic landmarks are plentiful: explore Fenton House and Garden, Keats House and Burgh House, or keep an eye out for the more than 50 blue and brown plaques that commemorate former famous residents. When you want to explore the rest of the city, hop on the Northern line or the Overground.



PROPERTY HIGHLIGHTS

- Open-plan kitchen, dining and reception room
- Formal reception room
- Versatile media room
- Principal bedroom suite
- Six further bedrooms
- Decked terrace
- Private landscaped garden
- Home gym
- Air conditioning
- Private parking space





Please don't hesitate to get in touch if you have any questions or require any further information.

hello@domusstay.com

+44 (0)20 8168 8880

Domus Stay provides the perfect combination of property, place and personal service for the world's most remarkable people. If you have any questions, or if we can help in any way, please contact us on the above number. Be it about a property you have, a property you want, dates to check or any special requirements you may need, we'd love a chat.

